

B.M. Elev. 242.04
 Nogales St. & San Jose Ave. N.M. Cor.
 R.R. Spike in N Side P.P. #44171

PUENTE BLDG. DIST. NO. 2

PROFILE ALIGNMENT AND GRADE OF P.C. 4522
 SANITARY SEWERS PAGE 1
 TO BE CONSTRUCTED IN

NOGALES STREET (25,619)

PRIVATE CONTRACT NO. 4522

W.S. 38

2 SHEETS, 3 PAGES

SCALE: VERT. 1" = 4' HORIZ. 1" = 40' AUGUST, 1957

PREPARED IN THE OFFICES OF
 DONALD R. WARREN CO.

By *Carl Nelson*
 REG. C. E. NO. 2537

FOR LEGEND SEE PLAN NO. S-A-64

- NOTES
- PROVIDE STAKES ON THE PROPERTY LINE OR PROPERTY LINES PRODUCED AT RIGHT ANGLES TO THE SEWER LINE AT THE CENTER LINE OF EACH MANHOLE.
 - NO REPRESENTATIVE OF THE COUNTY ENGINEER WILL SURVEY OR LAYOUT ANY PORTION OF THE WORK.
 - THE OWNER OR HIS AUTHORIZED REPRESENTATIVE SHALL FURNISH THE COUNTY ENGINEER WITH GRADE SHEETS AND STATIONING FOR ALL HOUSE LATERALS AND BRANCHES AND SHALL PROVIDE STAKES FOR THEM AT THEIR PROPER LOCATIONS WITH STATIONING PLAINLY MARKED. ANY CHANGE IN LOCATION SHALL BE REQUESTED IN WRITING BY THE OWNER OR HIS REPRESENTATIVE.
 - NO REVISIONS SHALL BE MADE IN THESE PLANS WITHOUT THE APPROVAL OF THE COUNTY ENGINEER.
 - USE STANDARD MANHOLE FRAMES AND COVERS, S.A-117, EXCEPT AS NOTED.
 - USE STANDARD STRENGTH PIPE EXCEPT AS NOTED.
 - USE CEMENT MORTAR FOR ALL VITRIFIED CLAY PIPE JOINTS.
 - RESURFACE ALL TRENCH WITHIN PAVED AREA TO MEET L.A. COUNTY ROAD DEPT. OR CALIF. STATE HIGHWAY DEPT. REQUIREMENTS IN ACCORDANCE WITH PERMITS.
 - ENCASE FOUR FEET OF SEWER AT POINTS OF INTERFERENCE WITH POLES, S.A-172 CASE III
 - HOUSE LATERALS TO BE CONSTRUCTED WITH INVERTS AT PROPERTY LINE - FEET BELOW CURB GRADE SHEET AS NOTED.
 - ALL STRUCTURES SHALL BE BRICK SEWER STRUCTURES, S.A-104, EXCEPT AS NOTED.
 - FOR ALLOWABLE LEAKAGE TEST USE FORMULA NO. 1 SPEC. S. SEC. 40
 - MANHOLE TOPS IN UNIMPROVED RIGHTS-OF-WAY TO BE 6" ABOVE FINISHED GRADE.
 - THE PRIVATE ENGINEER IS TO FURNISH THE HOUSE LATERAL DEPTH AT THE PROPERTY LINE BELOW THE GRADE OF THE E OF STREET ON EACH HOUSE LATERAL ON GRADE SHEET

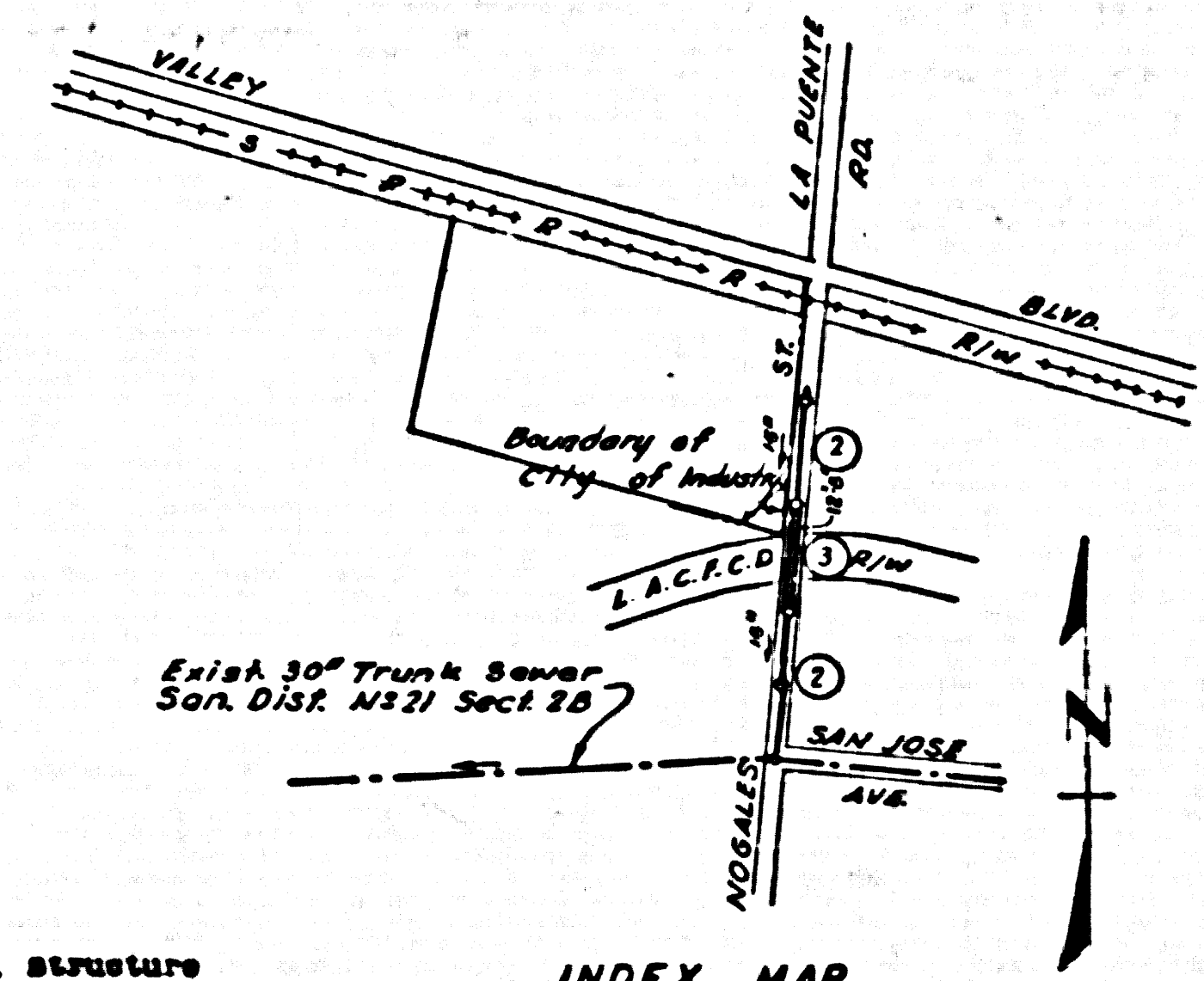
ISSUE NO PERMITS UNTIL
 RIGHT OF WAY IS DEDICATED
 CALL MAIN OFFICE MA-94747
 EXT. 464

NOTE:
 THE CONTRACTOR SHALL NOTIFY THE CONSTRUCTION AND STORM DRAIN DIVISION BY TELEPHONE, MADISON 9-4747, EXT. 362, AT LEAST 24 HOURS BEFORE STARTING ANY WORK UNDER THIS CONTRACT.

CONNECTION CHARGES
 AS INDICATED
Control 8-15-57

REVISION
 Realignment of Siphon to clear
 water line between Sta. 5+85 &
 Sta. 6+30.03
 CHECKED BY *Carl Nelson* 8/14/57

before crossing into any existing structure
 and before final acceptance of this work.
 County Sanitation District should be notified
 in order that required inspection may be made.



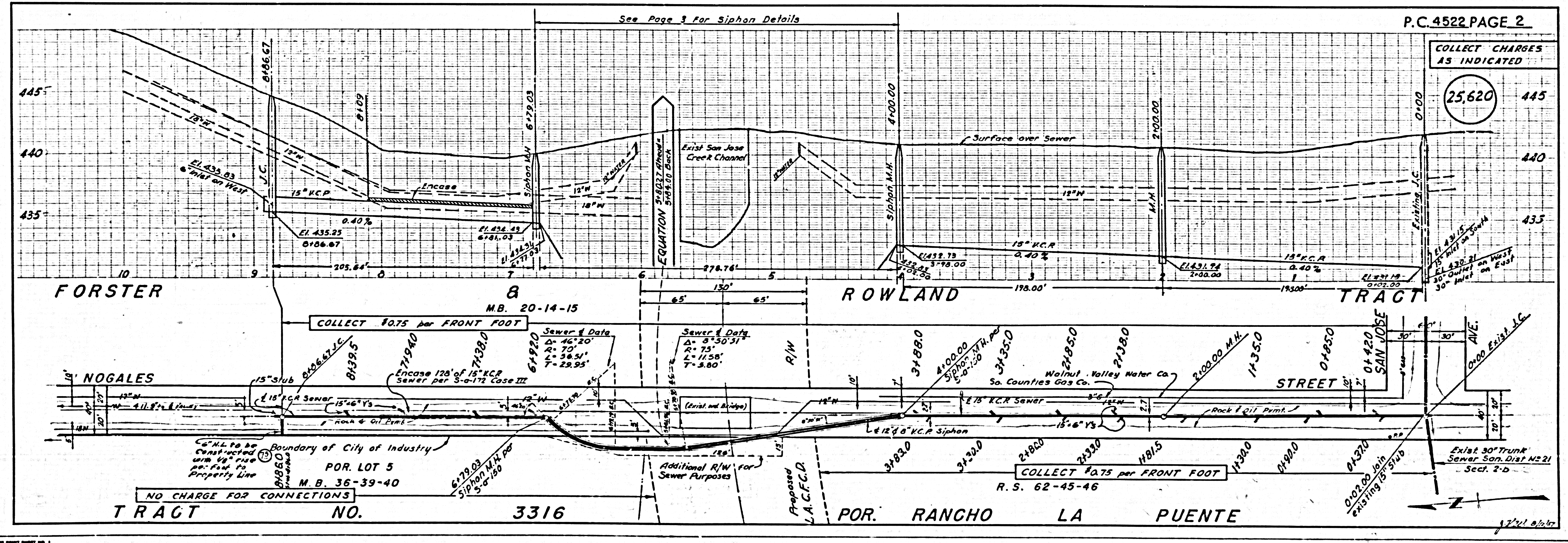
INDEX MAP
 SCALE 1"=600'
 P.C. 4522

APPROVED FOR INDUSTRIAL WASTES
 BY *Jack P... DATE 8/14/57*

NOTE:
 GRADES TO WHICH THIS IMPROVEMENT IS TO BE CONSTRUCTED ARE SHOWN ON PLANS AND PROFILES. GRADE POINTS FOR TOP OF CURB, CENTER LINE OF STREETS, OR CENTER LINE OF ALLEYS ARE SHOWN BY CIRCLES ON PROFILES. AT ALL POINTS BETWEEN DESIGNATED POINTS THE GRADE SHALL BE ESTABLISHED SO AS TO CONFORM TO A STRAIGHT LINE DRAWN BETWEEN SAID DESIGNATED POINTS.
 ELEVATIONS ARE IN FEET ABOVE U.S.C. & G.S. SEA LEVEL DATUM OF 1929.
 THIS BEARING AND THE DATA HEREON ARE HEREBY MADE A PART OF THE SPECIFICATIONS.
 WORK SHALL BE CONSTRUCTED ACCORDING TO SPECIFICATIONS ON FILE IN THE OFFICE OF THE COUNTY ENGINEER AND SHALL BE PROSECUTED ONLY IN THE PRESENCE OF THE COUNTY ENGINEER.
 BEFORE WORK CAN BE STARTED, THE CONTRACTOR MUST OBTAIN A PERMIT TO EXCAVATE IN COUNTY STREETS FROM THE L.A. COUNTY ROAD DEPT., 108 W. 2ND ST. AND MAKE A DEPOSIT WITH THE COUNTY ENGINEER, ROOM 25, PAN AMERICAN BUILDING, 252 60 BROADWAY SUPERIOR TO COVER THE COST OF CONSTRUCTION INSPECTION AND RECORD PLANS.
 APPROVAL OF THIS PLAN BY THE COUNTY OF LOS ANGELES DOES NOT CONSTITUTE A REPRESENTATION AS TO THE ACCURACY OF THE LOCATION OR OF THE EXISTENCE OR NON-EXISTENCE OF ANY UNDERGROUND UTILITY PIPE, OR STRUCTURE WITHIN THE LIMITS OF THIS PROJECT. THIS NOTE APPLIES TO ALL PAGES.
 IF WORK IS TO BE DONE IN A STATE HIGHWAY, A PERMIT MUST BE OBTAINED FROM THE STATE OF CALIFORNIA, DIVISION OF HIGHWAYS, 130 SOUTH SPRING STREET.

COUNTY OF LOS ANGELES, CALIFORNIA
 APPROVED, JOHN A. LAMBE, COUNTY ENGINEER
 APPROVED, A. M. BAWN, CHIEF ENGINEER
 TO SAN. DIST. NO. 21
 BY *Carl Nelson* BY *Carl Nelson*
 SANITATION ENGINEER CIVIL ENGINEER
 CHECKED BY *Carl Nelson* 8/22/57
 OFFICE OF COUNTY ENGINEER, REG. C. E. NO. 10,639

REVISION
 Realignment of Siphon and the
 elimination of 80 feet of main line
 sewer
 CHECKED BY *Carl Nelson* 8/14/57



P.C. 4522 PAGE 2
 COLLECT CHARGES
 AS INDICATED
 (25,620)

P.C. 4255

NO CHARGE FOR CONNECTIONS
 TRACT NO. 3316

COLLECT \$0.75 per FRONT FOOT
 R. S. 62-45-46

EXIST 30" TRUNK
 SEWER SAN. DIST. NO. 21
 SECT. 2-B

25,621

