

- Notes:
- No representative of the County Engineer will survey or layout any portion of the work.
 - No revisions shall be made in these plans without approval of the County Engineer.
 - Use standard manhole frames and covers, S-117, except as noted.
 - Use standard strength pipe, except as noted.
 - Use cement-mortar for all vitrified clay pipe joints.
 - Resurface all trench within paved areas to meet Los Angeles County Road Department or California State Highway requirements, in accordance with permit.
 - Encase four feet of sewer at points of interference with poles as per S-119.
 - For allowable leakage test use Formula No. 1, Spec. Sec. 54.
 - All structures shall be brick & concrete structures per S-102, except as noted.

Notes:

Elevations are in feet above U.S.C. & G.S. Sea Level Datum of 1929.

This Drawing and the data hereon are hereby made a part of the specifications.

Work shall be constructed according to specifications on file in the office of the County Engineer and shall be prosecuted only in the presence of the County Engineer.

Before work can be started, the contractor must obtain a permit to excavate in County streets from the L. A. County Road Department, 108 West Second Street and a permit to cover construction inspection and record plans from the County Engineer, Room 324, 253 South Broadway.

If work is to be done in a State Highway, a permit must be obtained from the State of California, Division of Highways, 120 South Spring Street.

Approval of this plan by the County of Los Angeles does not constitute a representation as to the Accuracy of the location of, or the existence or non-existence of, any underground utility, pipe, or structure within the limits of this project.

PRIVATE CONTRACT No. 4523
ENNIX - BLDG. DIST. No. 7

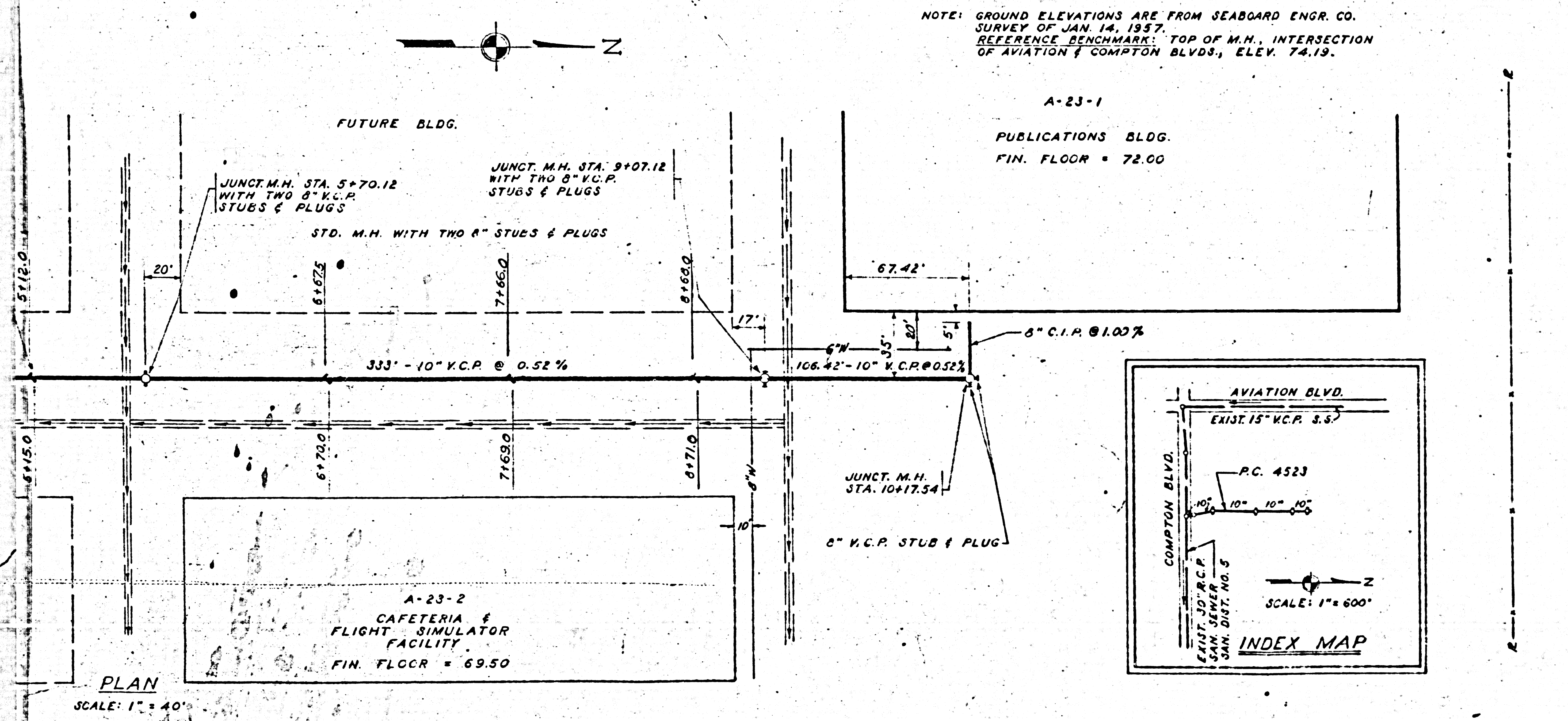
W. S. 25' Basic Grid - 65: P-5
SHEETS: 3
25/60

COUNTY OF LOS ANGELES, CALIFORNIA
APPROVED, JOHN A. LAMBE, County Engineer
By *[Signature]* Assistant Engineer
APPROVED, A. M. BAWN, Chief Engineer
By *[Signature]* Co. Sec. Dist. No. 7
Checked *[Signature]* Office Engineer
Office of County Engineer Reg. C. E. No. 240

NOTE:
THE CONTRACTOR SHALL NOTIFY THE CONSTRUCTION AND STORM DRAIN DIVISION BY TELEPHONE, MADISON 9-4747, EXT. 362, AT LEAST 24 HOURS BEFORE STARTING ANY WORK UNDER THIS CONTRACT.

NOTE:
The above approval by the County Engineer applies to the following:
(a) All 8 inch or larger sanitary sewer lines.
(b) All manholes.
(c) All 6 inch sanitary sewer lines between manholes.
(d) Only that portion within the unincorporated territory of the County of Los Angeles.

NOTE: GROUND ELEVATIONS ARE FROM SEABOARD ENGR. CO. SURVEY OF JAN. 14, 1957. REFERENCE BENCHMARK: TOP OF M.H. INTERSECTION OF AVIATION & COMPTON BLVD'S, ELEV. 74.19.



APPROVED BY INDUSTRIAL WASTE DIVISION
By *[Signature]* DATE 2/2/57

S.M. 21-19, EL. 91.174, F.B. 1391 - PG. 23
ON RR. N.W. INTERSECTION ROSECRANS AVE. & AVIATION BLVD.
4.9' S.W'LY. FROM S.W. RAIL & 11.4' S.E'LY. FROM S.E'LY. CONC. ABUTMENT.
STD. CO. SUR. MONUMENT
BRASS DISK STAMPED "INGLEWOOD C-12" SET IN CONCRETE
6" DOWN - PRECISE LEVEL NET "B", 1953 ADJ.

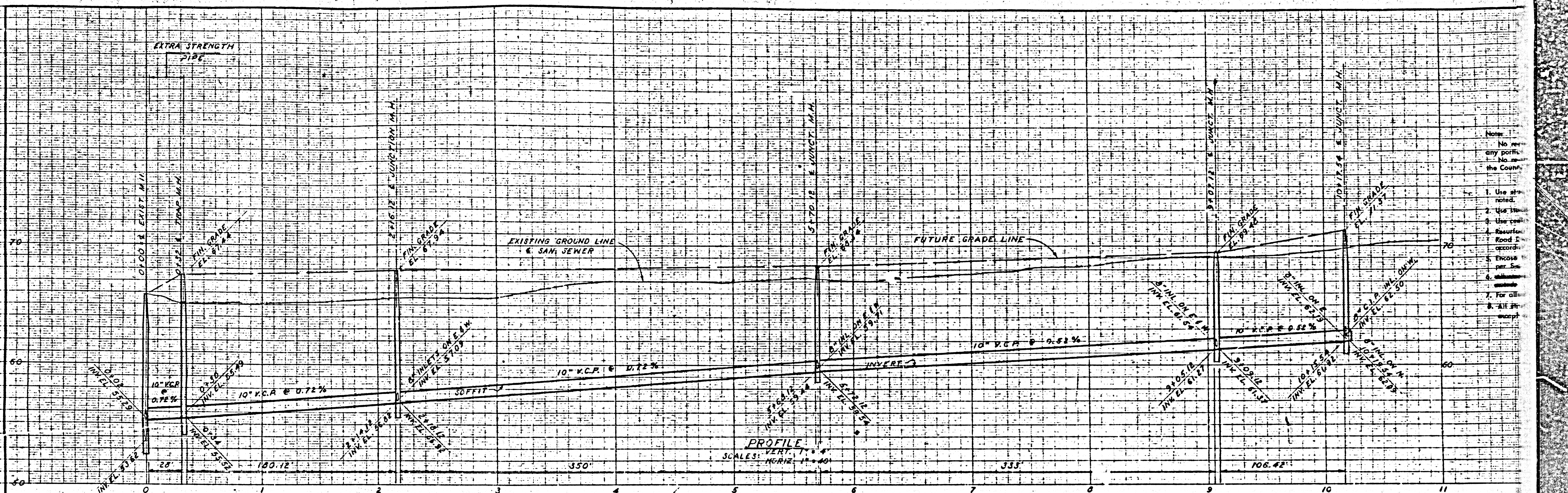
REVISIONS				
NO.	DATE	DESCRIPTION	CHK'D	APP.

DOUGLAS AIRCRAFT COMPANY INC.
SANTA MONICA, CALIFORNIA

HOLMES & HARVER, Inc.
ENGINEERS - CONSTRUCTORS
828 SO. FIGUEROA STREET LOS ANGELES 17, CALIFORNIA

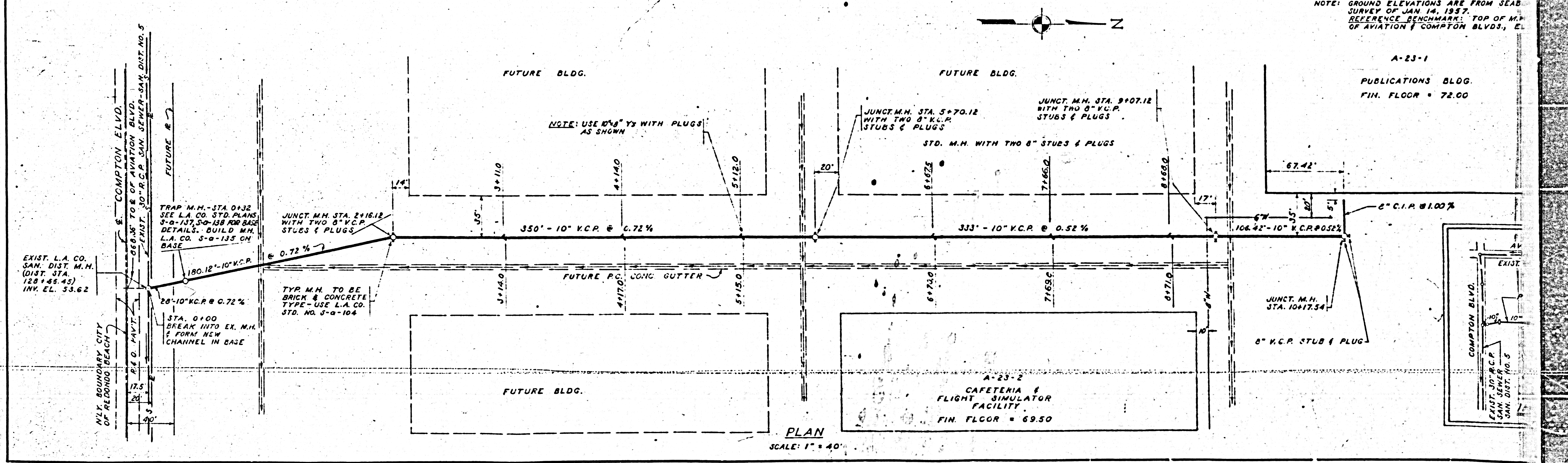
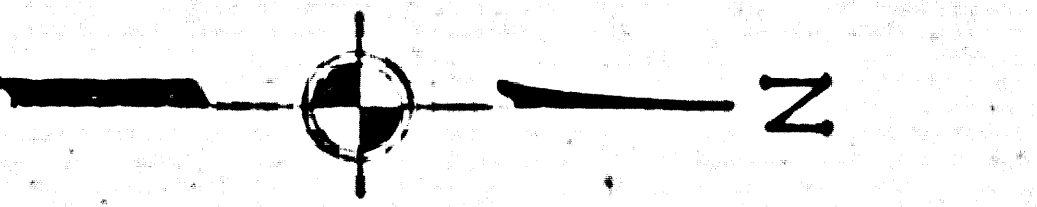
PUBLICATIONS BUILDING-LOCATION-A 23,
COMPTON & AVIATION BLVD'S, LOS ANGELES CO.
SANITARY SEWER - PLAN & PROFILE

DATE 9-19-57	DRAWN ARR	APPROVED <i>[Signature]</i>	SHEET NO. C-4
JOB NO. 1050	CHECKED <i>[Signature]</i>	DIST. ENGINEER E. J. COLLIER	



- Notes:
- No re-... any porfu... the Coun...
 1. Use at... noted.
 2. Use th...
 3. Use con...
 4. Resurf... Road & accord...
 5. Enclos... per Sta...
 6. ...
 7. For all...
 8. All sh... except

NOTE: GROUND ELEVATIONS ARE FROM SEAB. SURVEY OF JAN. 14, 1957. REFERENCE BENCHMARK: TOP OF M.H. OF AVIATION & COMPTON BLVD'S, E.



A-23-1

PUBLICATIONS BLDG.
 FIN. FLOOR = 72.00

A-23-2
 CAFETERIA & FLIGHT SIMULATOR FACILITY
 FIN. FLOOR = 69.50

