

LENNOX BLDG. DIST. NO. 7

PROFILE ALIGNMENT AND GRADE OF **P.C. 4534**
SANITARY SEWERS PAGE 1
 TO BE CONSTRUCTED IN

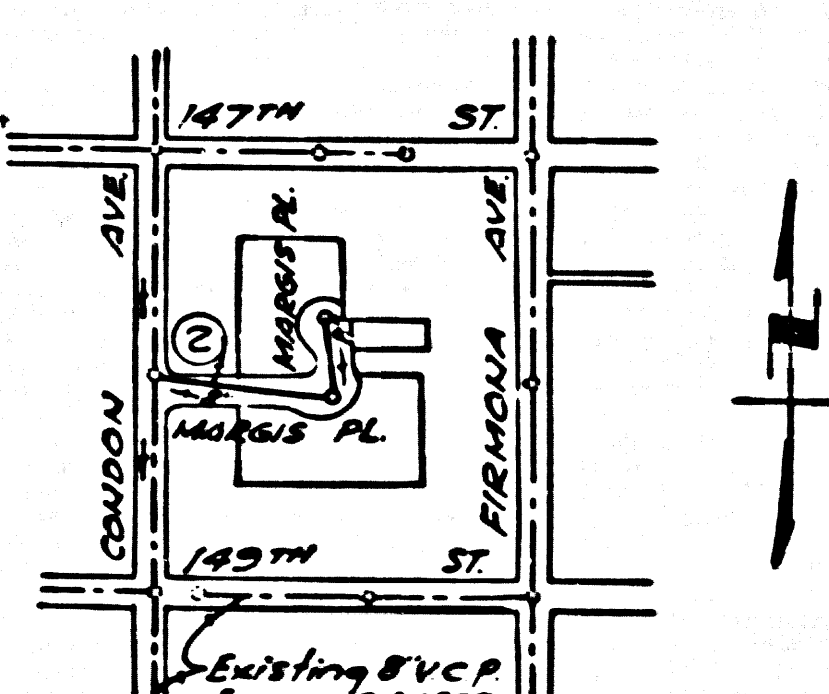
TRACT NO. 23923
PRIVATE CONTRACT NO. 4534

W.S. 25
 1 SHEET 2 PAGES
 SCALE: VERT. 1" = 4' HORIZ. 1" = 40'
 AUGUST, 1957
 PREPARED IN THE OFFICES OF
HARRY GILBERT
 REG. C. E. NO. 1737
 FOR LEGEND SEE PLAN NO. S-A-64

25,828

B.M. C.S. Monument @ Int. Compton Blvd. & Condon Ave.
 Terr. Road. S.Y. 2729 Elev. = 60.441

- NOTES**
- PROVIDE STAKES ON THE PROPERTY LINE OR PROPERTY LINES PRODUCED AT RIGHT ANGLES TO THE SEWER LINE AT THE CENTER LINE OF EACH MANHOLE.
 - NO REPRESENTATIVE OF THE COUNTY ENGINEER WILL SURVEY OR LAYOUT ANY PORTION OF THE WORK.
 - THE OWNER OR HIS AUTHORIZED REPRESENTATIVE SHALL FURNISH THE COUNTY ENGINEER WITH GRADE SHEETS AND STATIONING FOR ALL HOUSE LATERALS AND Y BRANCHES AND SHALL PROVIDE STAKES FOR THEM AT THEIR PROPER LOCATIONS WITH STATIONING PLAINLY MARKED. ANY CHANGE IN LOCATION SHALL BE REQUESTED IN WRITING BY THE OWNER OR HIS REPRESENTATIVE.
 - NO REVISIONS SHALL BE MADE IN THESE PLANS WITHOUT THE APPROVAL OF THE COUNTY ENGINEER.
 - USE STANDARD MANHOLE FRAME AND COVERS, S-A-117, 24" DIA.
 - USE STANDARD STRENGTH PIPE 8" DIA. 40' PER FOOT.
 - USE CEMENT MORTAR FOR ALL VITRIFIED CLAY PIPE JOINTS.
 - RESURFACE ALL TRENCH WITHIN PAVED AREA TO MEET L. A. COUNTY ROAD DEPT., OR CALIF. STATE HIGHWAY DEPT., REQUIREMENTS IN ACCORDANCE WITH PERMITS.
 - GRADE POINTS FOR ALL POINTS OF INTERFERENCE WITH EXISTING STRUCTURES.
 - ALL STRUCTURES SHALL BE BRICK SEWER STRUCTURES, S-A-104, 24" DIA.
 - FOR ALLOWABLE LEAKAGE TEST USE FORMULA NO. 1, SPEC. 1, SEC. 16.
 - HOUSE LATERALS TO BE CONSTRUCTED WITH 1/4" INCH RISE PER FOOT TO PROPERTY LINE.
 - THE PERMIT ENGINEER IS TO FURNISH THE HOUSE LATERAL DEPTH AT THE PROPERTY LINE BELOW THE TOP OF CURB ELEVATION FOR EACH HOUSE LATERAL, ON THE GRADE SHEET.



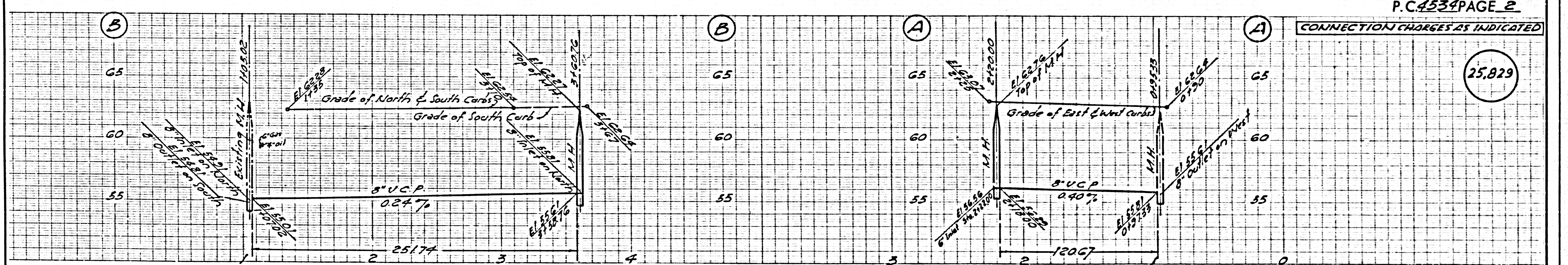
Note: Figure in circle indicates page number
INDEX MAP
TRACT NO. 23923 P.C. 4534
 SCALE: 1" = 400'

CONNECTION CHARGES AS INDICATED
 L. Gilbert 9-11-57

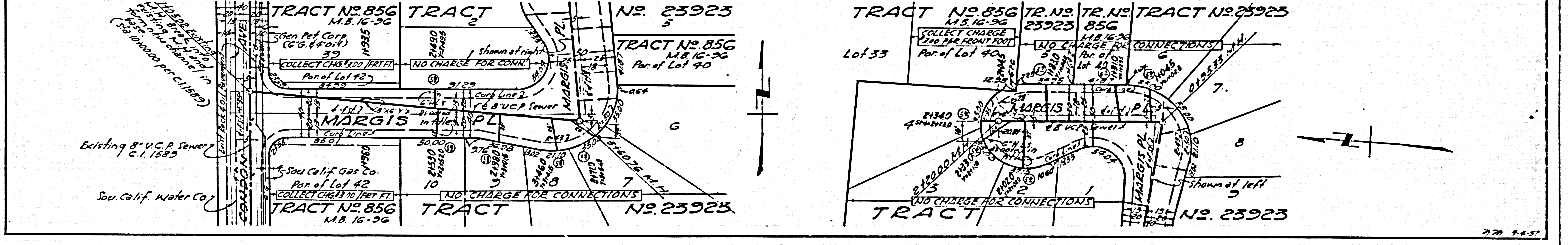
NOTE
 GRADES TO WHICH THIS IMPROVEMENT IS TO BE CONSTRUCTED ARE SHOWN ON PLANS AND PROFILES. GRADE POINTS FOR TOP OF CURBS, CENTER LINE OF STREETS, OR CENTER LINE OF ALLEYS ARE SHOWN BY CIRCLES ON PROFILES AT ALL POINTS BETWEEN DESIGNATED POINTS. THE GRADE SHALL BE ESTABLISHED TO AS TO CONFORM TO A STRAIGHT LINE DRAWN BETWEEN SAID DESIGNATED POINTS.
 ELEVATIONS ARE IN FEET ABOVE U.S.C. & G.S. SEA LEVEL. DATUM OF 1929.
 THIS DRAWING AND THE DATA HEREON ARE HEREBY MADE A PART OF THE SPECIFICATIONS.
 WORK SHALL BE CONSTRUCTED ACCORDING TO SPECIFICATIONS ON FILE IN THE OFFICE OF THE COUNTY ENGINEER AND SHALL BE PROSECUTED ONLY IN THE PRESENCE OF THE COUNTY ENGINEER.
 BEFORE WORK CAN BE STARTED, THE CONTRACTOR MUST OBTAIN A PERMIT TO EXCAVATE IN COUNTY STREETS FROM THE L. A. COUNTY ROAD DEPT., THE W. S. 25 AND MAKE A REPORT WITH THE COUNTY ENGINEER, ROOM 374 PALM AVENUE, BUILDING 343 SO. BROADWAY SUFFICIENT TO COVER THE COST OF CONSTRUCTION INSPECTION AND SECOND PLANS.
 APPROVAL OF THIS PLAN BY THE COUNTY OF LOS ANGELES DOES NOT CONSTITUTE A REPRESENTATION AS TO THE ACCURACY OF THE LOCATION OF OR THE EXISTENCE OR NON-EXISTENCE OF ANY UNDERGROUND UTILITY PIPE, OR STRUCTURE WITHIN THE LIMITS OF THE PROJECT. THIS NOTE APPLIES TO ALL PAGES.
 IF WORK IS TO BE DONE IN A STATE HIGHWAY, A PERMIT MUST BE OBTAINED FROM THE STATE OF CALIFORNIA, DIVISION OF HIGHWAYS, 130 SOUTH SPRING STREET.

COUNTY OF LOS ANGELES, CALIFORNIA
 APPROVED, JOHN A. LAMBE, COUNTY ENGINEER
 APPROVED, A. M. RAWN, CHIEF ENGINEER
 BY: [Signature] SANITATION ENGINEER
 BY: [Signature] OFFICE ENGINEER
 CHECKED BY: [Signature] 9-11-57
 OFFICE OF COUNTY ENGINEER, REG. C. E. NO. 3666

P.C. 4534 PAGE 2



CONNECTION CHARGES AS INDICATED
 25,829



779 9-8-57

DEAD END ESCAPE VALVE

DEAD END ESCAPE VALVE