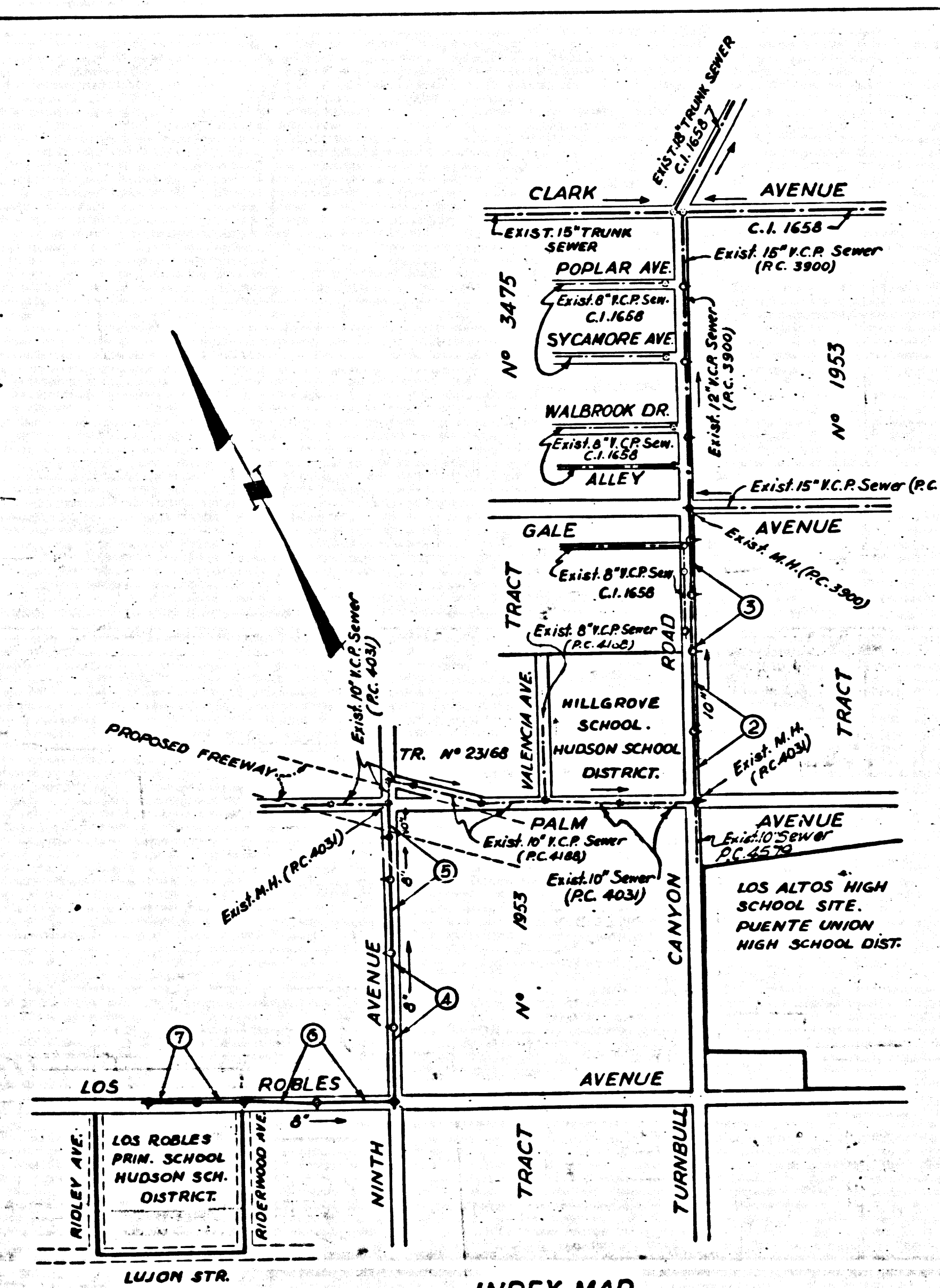


256



INDEX MAP
SCALE: 1" = 600'
RC. 4545

BENCH MARK: S.G. N° 1347
L.E. N. near center of Curb
return at S.E. corner of
Calle Ave. & 7th Ave.
ELEVATION = 361.332 (1954)

CONNECTION CHARGES
AS INDICATED
Limitas 5-6-53

PUENTE BLDG. DIST. NO. 2.

- NOTE:
1. Provide stakes on the property lines or property lines produced at right angles to the sewer line at the center line of each manhole.
 2. No representative of the County Engineer will survey or layout any portion of the work.
 3. The owner or his authorized representative shall furnish the County Engineer with grade sheets and stations for all house laterals and Y branches and shall provide stakes for them at their proper locations with stationing plainly marked. Any change in location shall be requested in writing by the owner or his representative.
 4. No revisions shall be made in these plans without the approval of the County Engineer.
 5. Use standard manhole frames and covers, S-a-117.
 6. Use standard strength pipe except as noted.
 7. Use cement mortar or "Wedge-Lock" or "Speed-Seal" for all vitrified clay pipe joints per Spec's Sec. 36-44B.
 8. Resurface all trench within paved area to meet L. A. County Road Dept. or California State Highway Dept. requirements in accordance with permit.
 9. Encase four feet of sewer at points of interference with poles, S-a-175 - Case III.
 10. House laterals to be constructed with inverts at property line 6 feet below curb grade except as noted.
 11. All structures shall be brick sewer structures, S-a-104.
 12. For allowable leakage test, use Formula No. 1, Spec's, Sec. 54.

NOTE:
THE CONTRACTOR SHALL NOTIFY THE CONSTRUCTION AND STORM
DRAIN DIVISION BY TELEPHONE MADISON 9-4747 EXT. 362 AT
LEAST 24 HOURS BEFORE STARTING ANY WORK UNDER
THIS CONTRACT.

SHEET	PAGES
1	1-5
2	6-7

REVISION:
Relocated M.H.'s, pages 2 & 3
Added M.H. @ Sta. 15+42.36, page 3
APPROVED: *[Signature]* 7-28-53
Sanitation Engineer, Reg. C. E. No. 3405

PC. 4545
PAGE 1

PROFILE, ALIGNMENT AND GRADE OF
SANITARY SEWERS
TO BE CONSTRUCTED FOR
LOS ROBLES PRIMARY SCHOOL

PRIVATE CONTRACT NO. 4545
W. S. 37
2 SHEETS, 7 PAGES

Scale: VERT. 1" = 4'
HORIZ. 1" = 40' AUG. 1957
PREPARED IN THE OFFICES OF
KISTNER, WRIGHT & WRIGHT
ARCHITECTS & ENGINEERS
[Signature] Reg. C. E. No. 6617

FOR LEGEND SEE PLAN NO. S-a-64

NOTE:
Grades to which this improvement is to be constructed are shown on plans and profiles. Grade points for top of curbs, center line of streets, or center line of alleys are shown by circles on profiles. At all points between designated points the grade shall be established so as to conform to a straight line drawn between said designated points.
Elevations are in feet above U.S.C. (U.S. Sea Level Datum of 1929).
This drawing and the data hereon are hereby made a part of the specifications.
Work shall be constructed according to specifications on file in the office of the County Engineer and shall be prosecuted only in the presence of the County Engineer.
Before work can be started, the contractor must obtain a permit to excavate in County streets from the L.A. County Road Dept. and make a deposit with the County Engineer, Room 394, American Bldg., 255 So. Broadway, sufficient to cover the cost of construction inspection and record plans.
Approval of this plan by the County of Los Angeles does not constitute a representation as to the accuracy of the location of or the existence or non-existence of any underground utility, pipe, or structure within the limits of this project. This note applies to all pages.
If work is to be done in a State Highway, a permit must be obtained from the State of California, Division of Highways, 120 South Spring Street.

COUNTY OF LOS ANGELES, CALIFORNIA
Approved, John A. Lambie, County Engineer Approved, A. M. Rawn
Sanitation Engineer, Reg. C. E. No. 3405 CHIEF ENGR. CO. SAN. DIST. NO. 15
BY *[Signature]* BY *[Signature]*
Sanitation Engineer Office Engineer

Checked By: *[Signature]* 5-13-58
Office of County Engineer, Reg. C. E. No. 3405

PC. 4545
PAGE 1

26,255

1 BC 4252

Trim Line

25

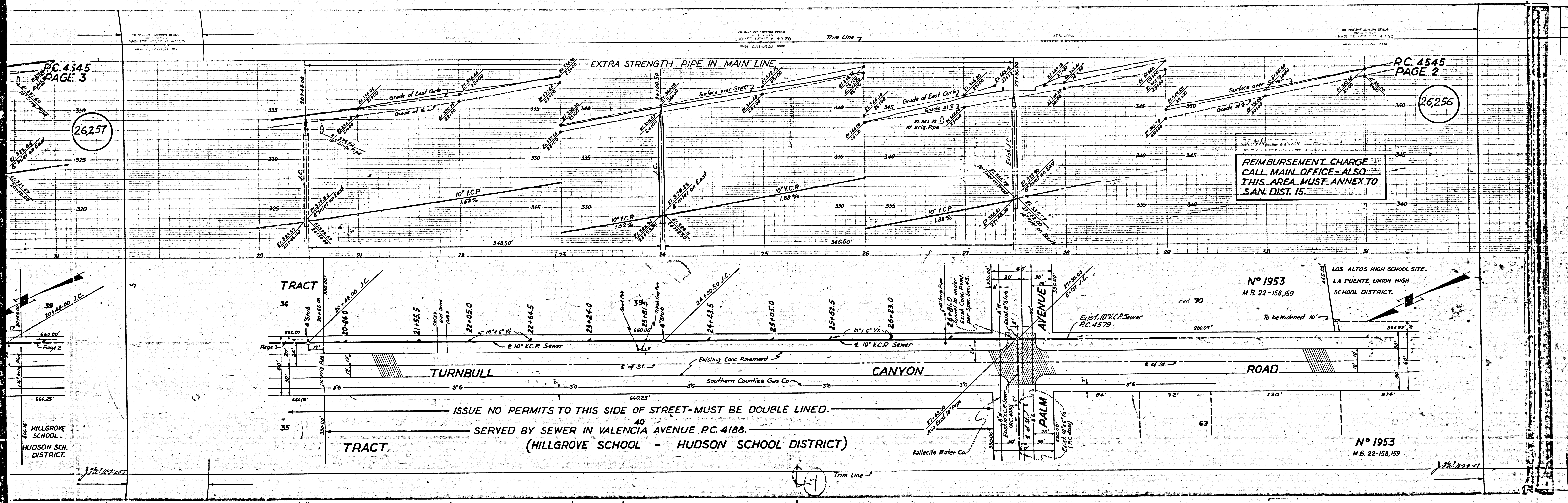
PC. 4545
PAGE 3

PC. 4545
PAGE 2

26,257

26,256

REIMBURSEMENT CHARGE
CALL MAIN OFFICE - ALSO
THIS AREA MUST ANNEX TO
SAN. DIST. 15.



ISSUE NO PERMITS TO THIS SIDE OF STREET - MUST BE DOUBLE LINED.
SERVED BY SEWER IN VALENCIA AVENUE P.C. 4188.
(HILLGROVE SCHOOL - HUDSON SCHOOL DISTRICT)

Nº 1953
M.B. 22-158,159

LOS ALTOS HIGH SCHOOL SITE.
LA PUENTE UNION HIGH
SCHOOL DISTRICT.

Nº 1953
M.B. 22-158,159

HILLGROVE
SCHOOL
HUDSON SCH.
DISTRICT.

Trim Line

7/21/62

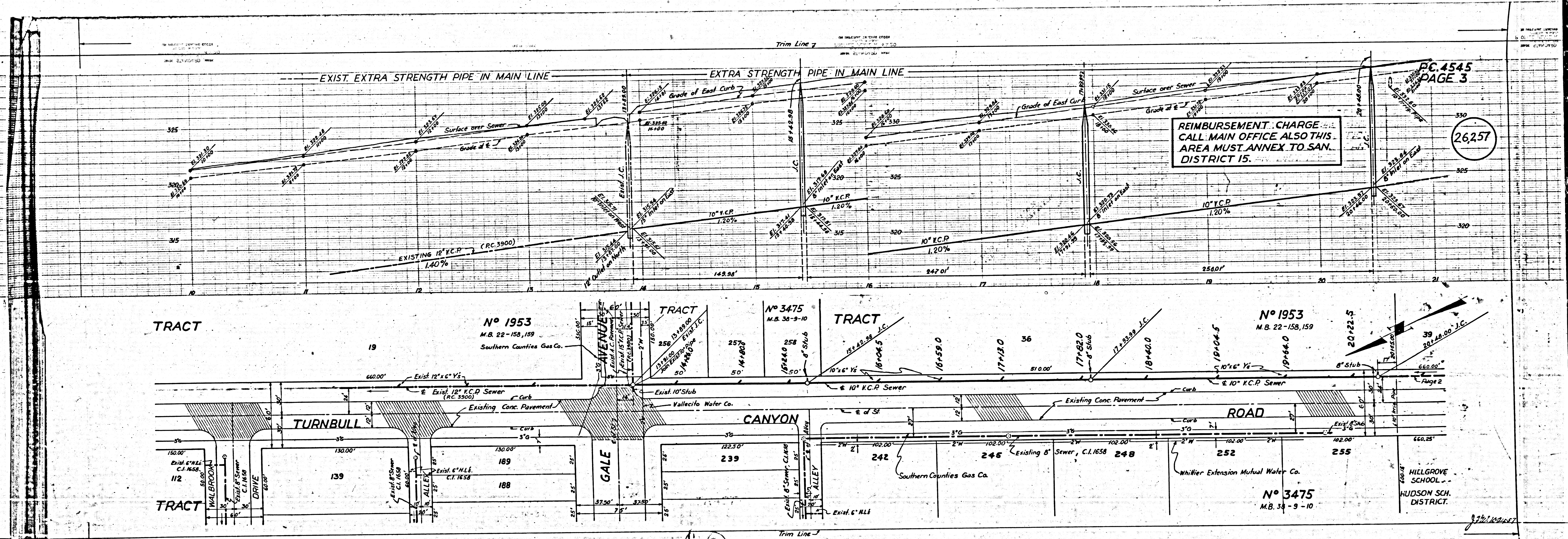
PC. 4545
PAGE 4.

ALSO THIS
TO SAN.

26,258

PC. 4545
PAGE 3

26,257



REIMBURSEMENT CHARGE
CALL MAIN OFFICE ALSO THIS
AREA MUST ANNEX TO SAN.
DISTRICT 15.

(3)

HILLGROVE
SCHOOL
HUDSON SCH.
DISTRICT.

3/22/10-24-51

PC. 4545
PAGE 5

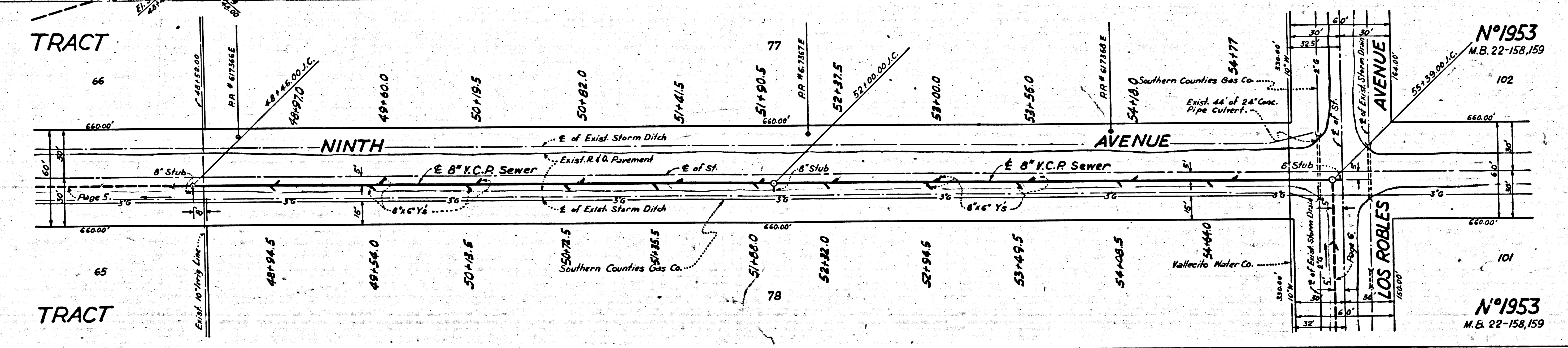
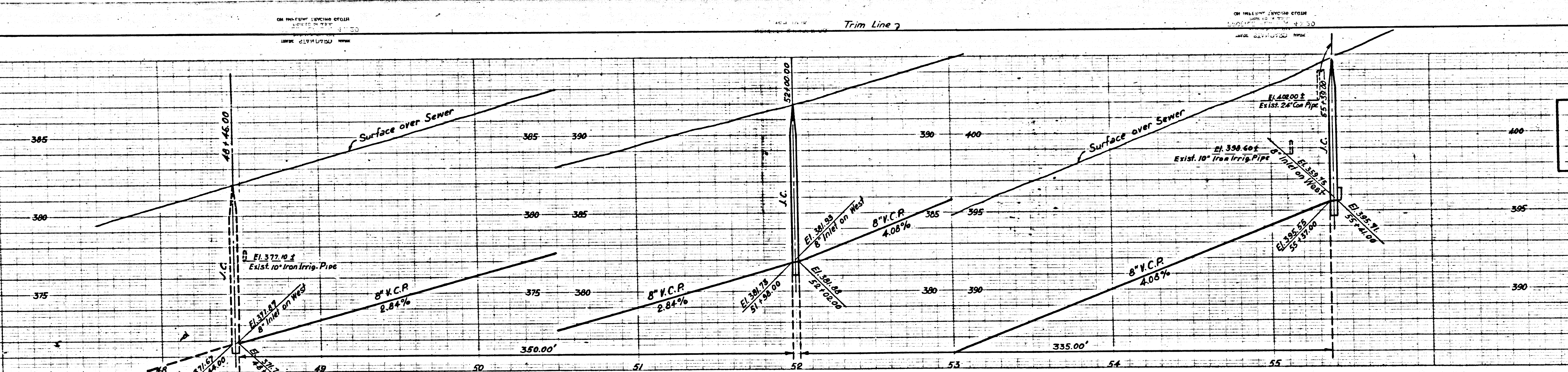
REIMBURSEMENT CHARGE
CALL MAIN OFFICE. ALSO
THIS AREA MUST ANNEX
TO SAN. DIST. 15.

26,259

PC. 4545
PAGE 4

REIMBURSEMENT CHARGE
CALL MAIN OFFICE. ALSO
THIS AREA MUST ANNEX
TO SAN. DIST. 15.

26,258



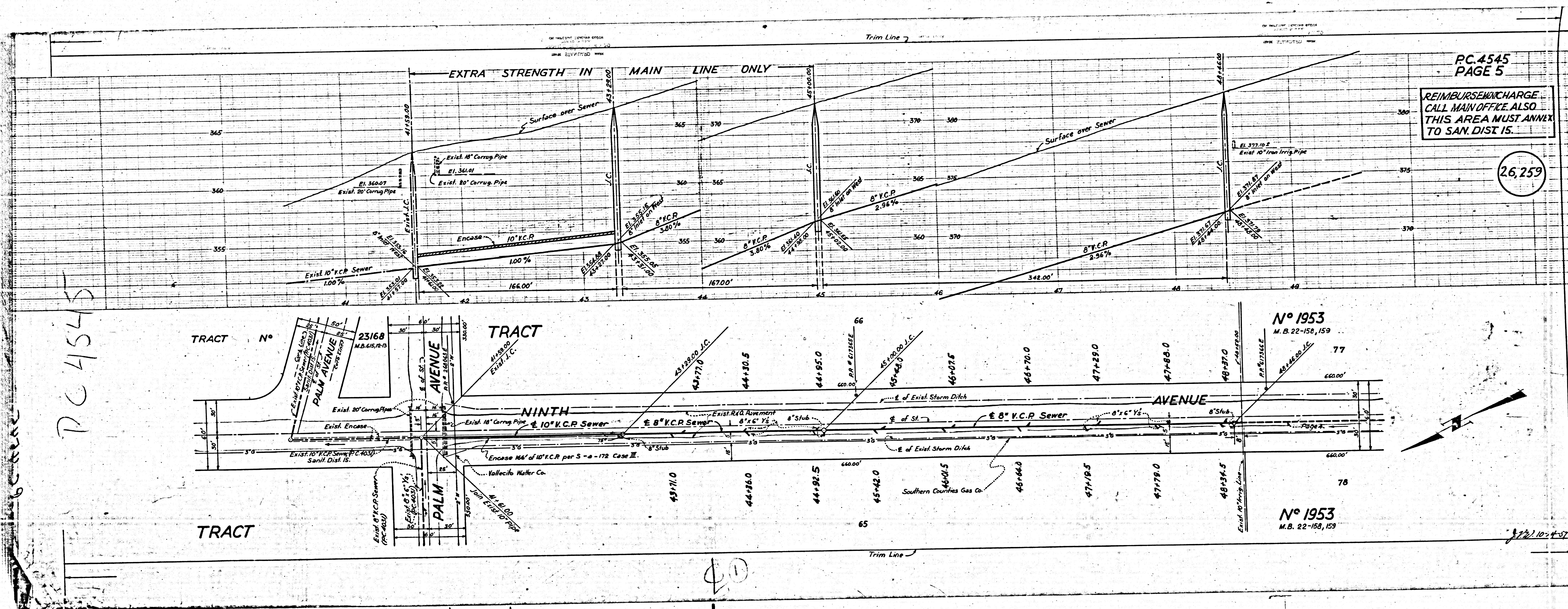
N^o 1953
M.B. 22-158, 159

N^o 1953
M.B. 22-158, 159

8/22/10-24-57

8/22/10-24-57

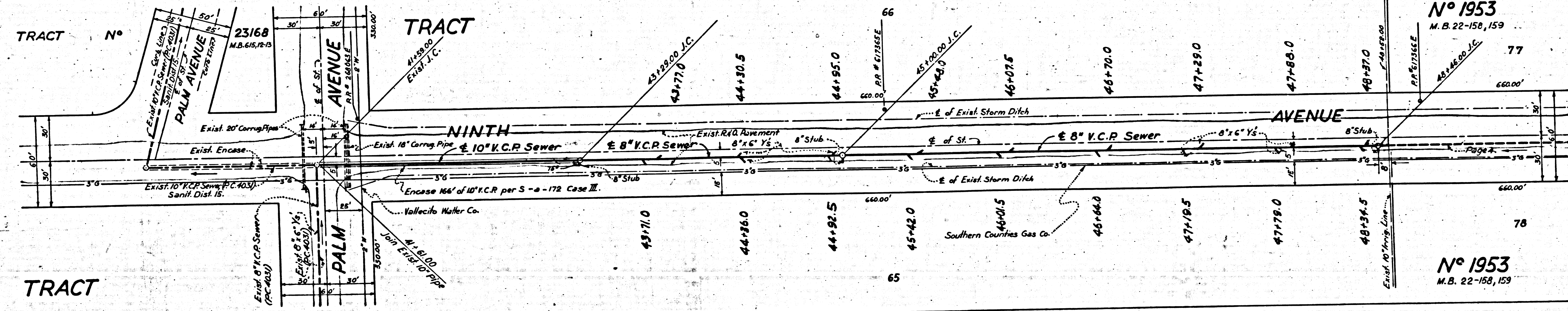
PC 4545



PC 4545
PAGE 5

REIMBURSEMENT CHARGE
CALL MAIN OFFICE ALSO
THIS AREA MUST ANNEX
TO SAN. DIST. 15.

26,259



26,259

PC. 4545
PAGE 7

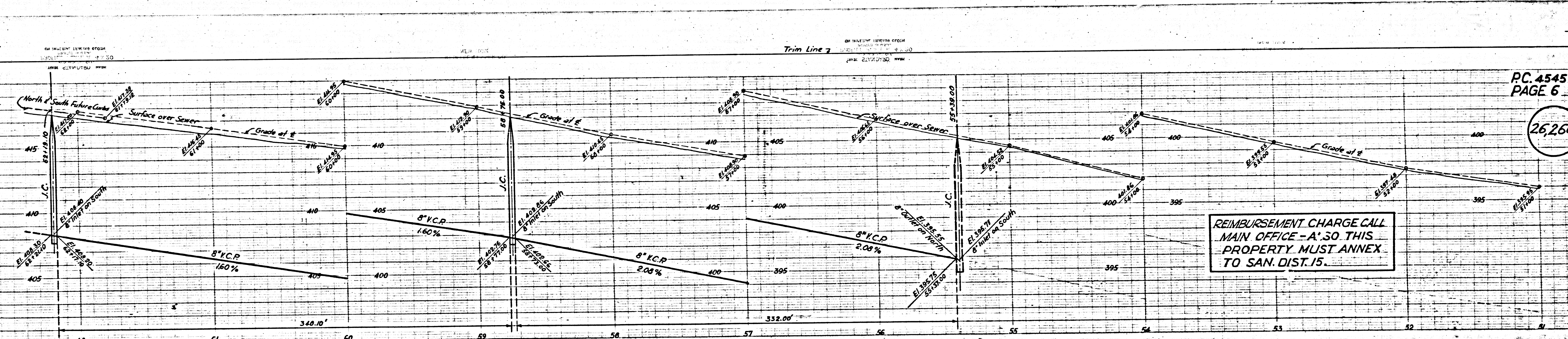
CHARGES
ATED

26,261

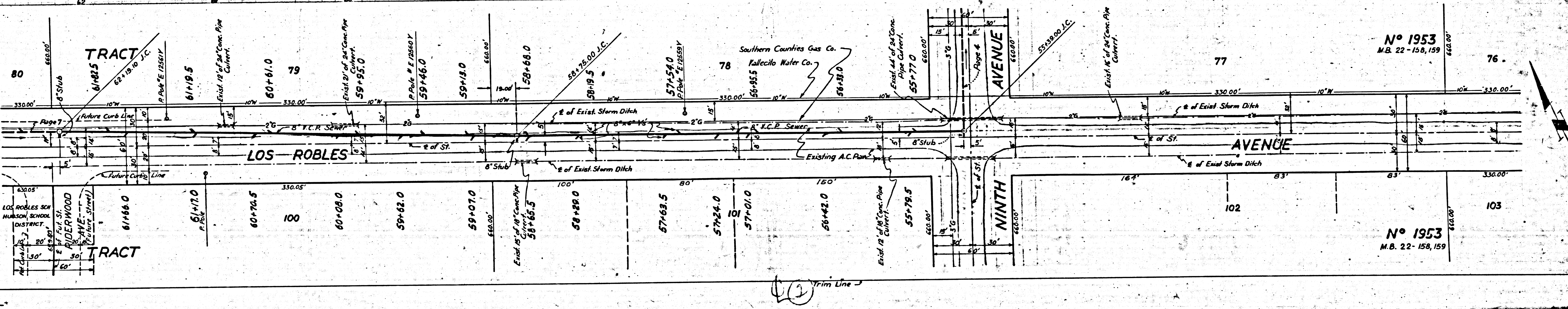
PC. 4545
PAGE 6

26,260

S
SC 4545

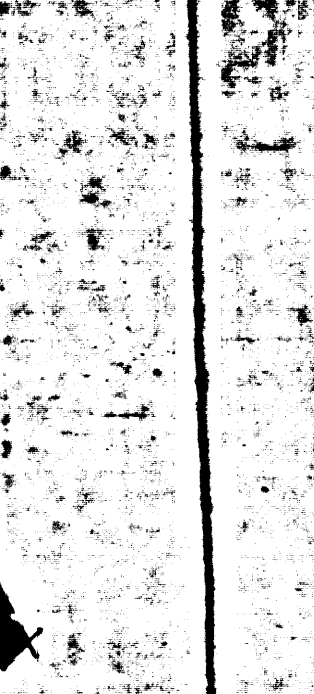


REIMBURSEMENT CHARGE CALL
MAIN OFFICE - A.30 THIS
PROPERTY MUST ANNEX
TO SAN. DIST. 15.



Nº 1953
M.B. 22-158, 159

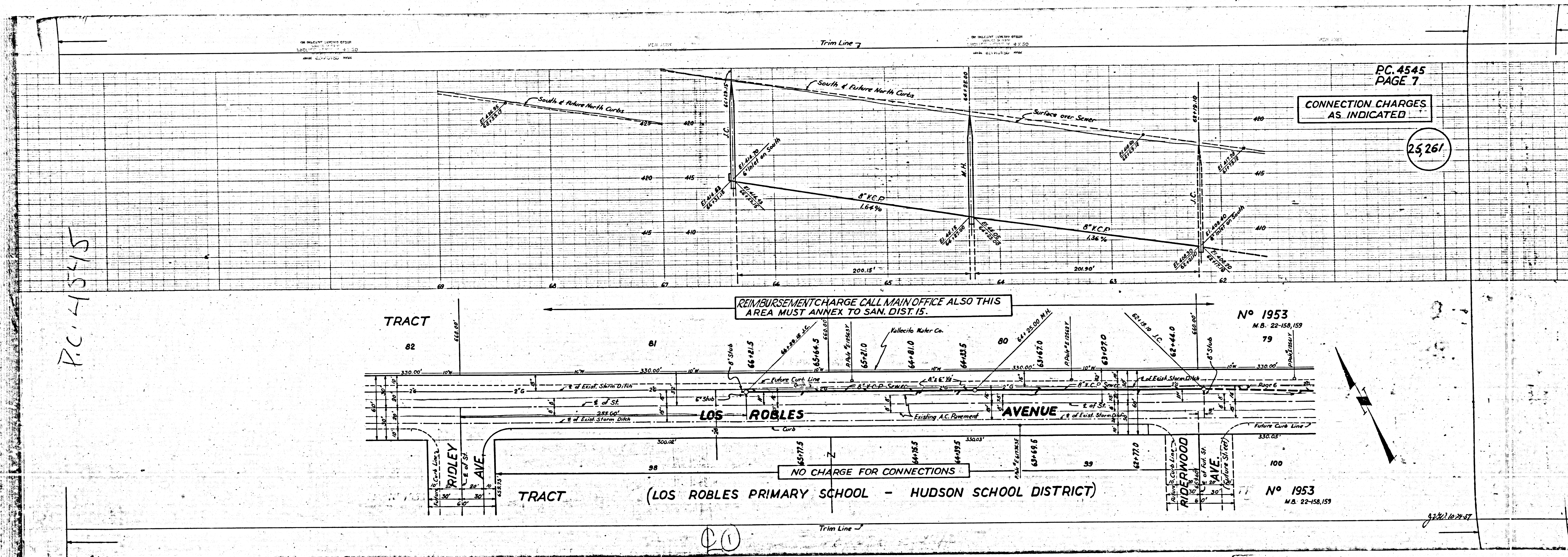
Nº 1953
M.B. 22-158, 159



3/22/1957

3/22/1957

P.C. 4545



P.C. 4545
PAGE 7

CONNECTION CHARGES
AS INDICATED

25261

No 1953
M.B. 22-158, 159
79

No 1953
M.B. 22-158, 159

100

3/2/10/24/27