

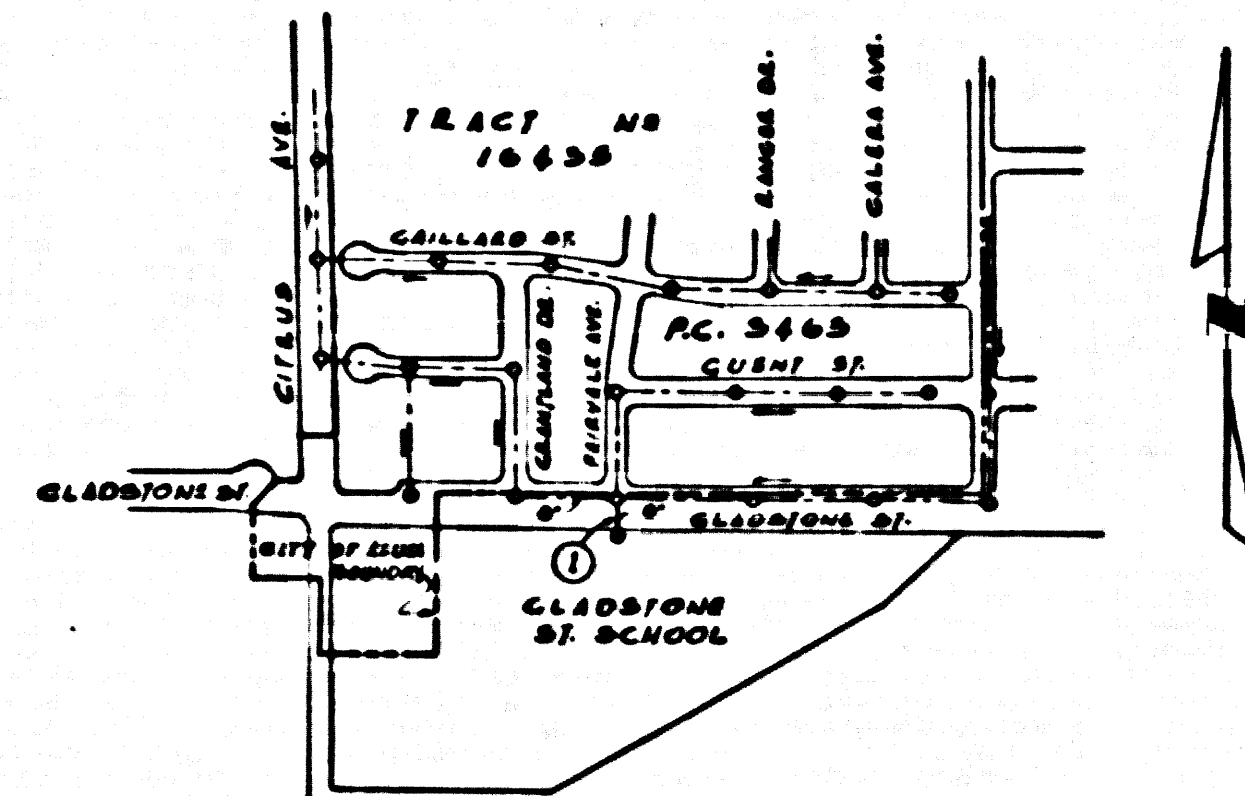
B.M.S.G. 1122 ELEV. 586.586
 L.A. COUNTY ROAD DEPT. MON. & INK
 GLADSTONE ST. & CITRUS AVE.

NOTE:
 THE CONTRACTOR MUST OBTAIN A PERMIT
 FROM THE CITY OF AZUSA BEFORE EXCAVATION
 OF CITY STREET.

NOTE:
 THE CONTRACTOR SHALL NOTIFY THE CONSTRUCTION AND
 STORM DRAIN DIVISION BY TELEPHONE, MADISON 9-4747,
 EXT. 352, AT LEAST 24 HOURS BEFORE STARTING ANY
 WORK UNDER THIS CONTRACT.

SAN DIMAS BLDG. DIST. NO. 10

- NOTES:
 PROFILE STAKES ON THE PROPERTY LINE OR PROPERTY LINES PRODUCED AT RIGHT ANGLES TO THE SPINE LINE AT THE CENTER
 LINE OF EACH MANHOLE.
 NO REPRESENTATIVE OF THE COUNTY ENGINEER WILL SURVEY OR LAYOUT ANY PORTION OF THE WORK.
 THE OWNER OR HIS AUTHORIZED REPRESENTATIVE SHALL FURNISH THE COUNTY ENGINEER WITH GRADE SHEETS AND STATION
 FOR ALL HOUSE LATERALS AND V BRANCHES AND SHALL PROVIDE STAKES FOR THEM AT THEIR PROPER LOCATIONS WITH STATION
 AND PLAINLY MARKED. ANY CHANGE IN LOCATION SHALL BE REQUESTED IN WRITING BY THE OWNER OR HIS REPRESENTATIVE.
 NO REVISIONS SHALL BE MADE IN THESE PLANS WITHOUT THE APPROVAL OF THE COUNTY ENGINEER.
 1. USE STANDARD MANHOLE FRAMES AND COVERS, S.A.-117, EXCEPT AS NOTED.
 2. USE STANDARD STRENGTH PIPE EXCEPT AS NOTED.
 3. USE CLAY PIPE JOINTS FOR ALL VITRIFIED CLAY PIPE JOINTS.
 4. REINFORCE ALL TRUNKS WITHIN PAVED AREAS TO MEET L. A. COUNTY ROAD DEPT., OR CALIF. STATE HIGHWAY DEPT. REQUIRE-
 MENTS IN ACCORDANCE WITH DETAILS.
 5. ENCASE FOUR FEET OF SEWER AT POINTS OF INTERFERENCE WITH POLES, S.A.-119.
 6. HOUSE LATERALS TO BE CONSTRUCTED WITH INVERTS AT PROPERTY LINE. SEE SHOW CURB GRADE EXCEPT AS NOTED.
 7. ALL STRUCTURES SHALL BE BUILT SEWER STRUCTURES, S.A.-120, EXCEPT AS NOTED.
 8. FOR MANHOLE BRACKETS SEE THE FORMULA HO. _____ SPEC. SEC. 2.
 9. MANHOLE TOPS IN UNPAVED AREAS OR WAY TO BE 6" ABOVE FINISHED GRADE.



INDEX MAP
 SCALE: 1" = 500'
 TRACT NO. 25586
 P.C. 4556

APPROVED, CITY OF AZUSA
 BY *William H. Kuefner*
 CITY ENGINEER

PROFILE ALIGNMENT AND GRADE OF P.C. 4556
 SANITARY SEWERS PAGE 1
 TO BE CONSTRUCTED IN 25,766

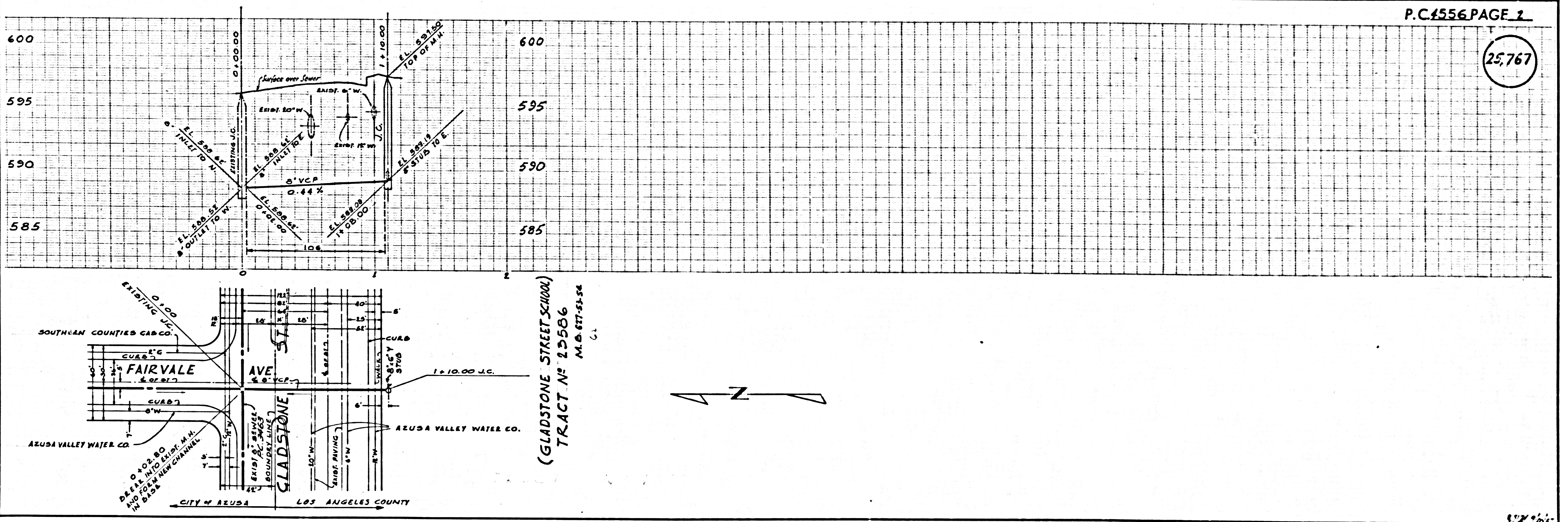
GLADSTONE STREET
 PRIVATE CONTRACT NO. 4556
 W.S. 47

1 SHEETS, 2 PAGES
 SCALE: VERT. 1" = 4' AUG. 1957
 HORIZ. 1" = 40'

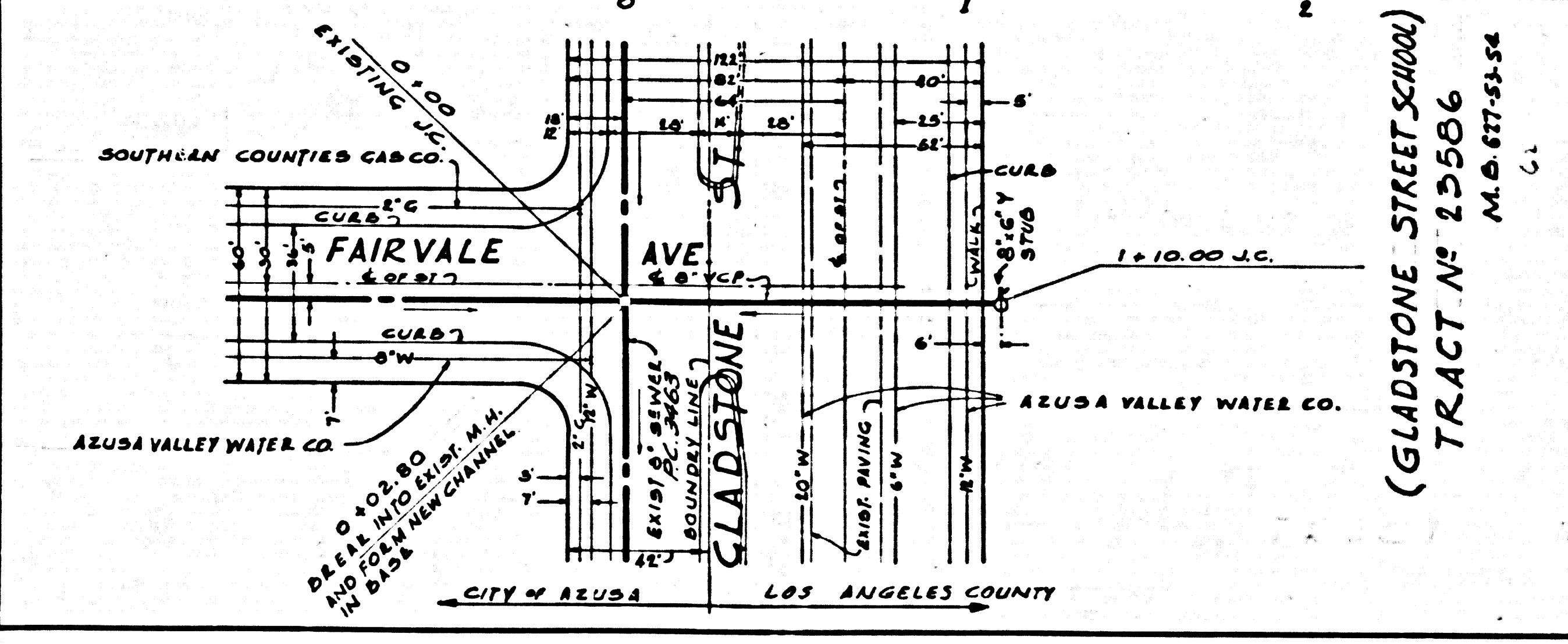
PREPARED IN THE OFFICES OF
 LEVINE AND MC CANN
 UNDER THE SUPERVISION OF
W. D. Douglas
 REG. E. NO. 1117

FOR LEGEND SEE PLAN NO. S-A-64
 NOTE:
 GRADES TO WHICH THE IMPROVEMENTS ARE TO BE CONSTRUCTED ARE SHOWN ON PLANS AND PROFILES. GRADE POINTS FOR
 TOP OF CURB, CENTER LINE OF STREETS, OR CENTER LINE OF ALLEYS ARE SHOWN BY CIRCLES ON PROFILES. AT ALL POINTS BETWEEN
 REGULARIZED POINTS THE GRADE SHALL BE ESTABLISHED TO BE TO CORRESPOND TO A STRAIGHT LINE DRAWN BETWEEN SAID REGU-
 LARIZED POINTS.
 ELEVATIONS ARE IN FEET ABOVE MEAN SEA LEVEL UNLESS OTHERWISE SPECIFIED.
 THIS DRAWING AND THE DATA HEREON ARE HEREBY MADE A PART OF THE SPECIFICATIONS.
 WORK SHALL BE CONSTRUCTED ACCORDING TO SPECIFICATIONS ON FILE IN THE OFFICE OF THE COUNTY ENGINEER AND SHALL
 BE PROTECTED ONLY IN THE PRESENCE OF THE COUNTY ENGINEER.
 BEFORE WORK CAN BE STARTED, THE CONTRACTOR MUST OBTAIN A PERMIT TO EXCAVATE IN THE CITY OF AZUSA FROM THE
 L. A. COUNTY ROAD DEPT., 120 W. 10TH ST. AND MAKE A REPORT WITH THE COUNTY ENGINEER, ROOM 324 MAIN AMERICAN BLDG.
 WHO SHALL BE RESPONSIBLE TO COVER THE COST OF CONSTRUCTION INSPECTION AND RECORD PLANS.
 APPROVAL OF THIS PLAN BY THE COUNTY OF LOS ANGELES DOES NOT CONSTITUTE A REPRESENTATION AS TO THE ACCURACY
 OF THE LOCATION OF OR THE EXISTENCE OR NON-EXISTENCE OF ANY UNDERGROUND UTILITY PIPES, OR STRUCTURES WITHIN THE
 LIMITS OF THIS PROJECT. THIS NOTE APPLIES TO ALL PAGES.
 IF WORK IS TO BE DONE IN A STATE HIGHWAY, A PERMIT MUST BE OBTAINED FROM THE STATE OF CALIFORNIA, DIVISION OF
 HIGHWAYS, 120 SOUTH SPANISH STREET.

COUNTY OF LOS ANGELES, CALIFORNIA
 APPROVED, JOHN A. LAMME, COUNTY ENGINEER
 APPROVED, A. B. BARNHART, CHIEF ENGINEER
 BY *A. J. Brannaman* DIST. SANITATION ENGINEER BY *W. D. Douglas* DIST. ENGINEER
 CHECKED BY *A. V. White* S.E. OFFICE OF COUNTY ENGINEER, 120 S. 10TH ST. 3406



P.C. 4556 PAGE 2
 25,767



CG 4222