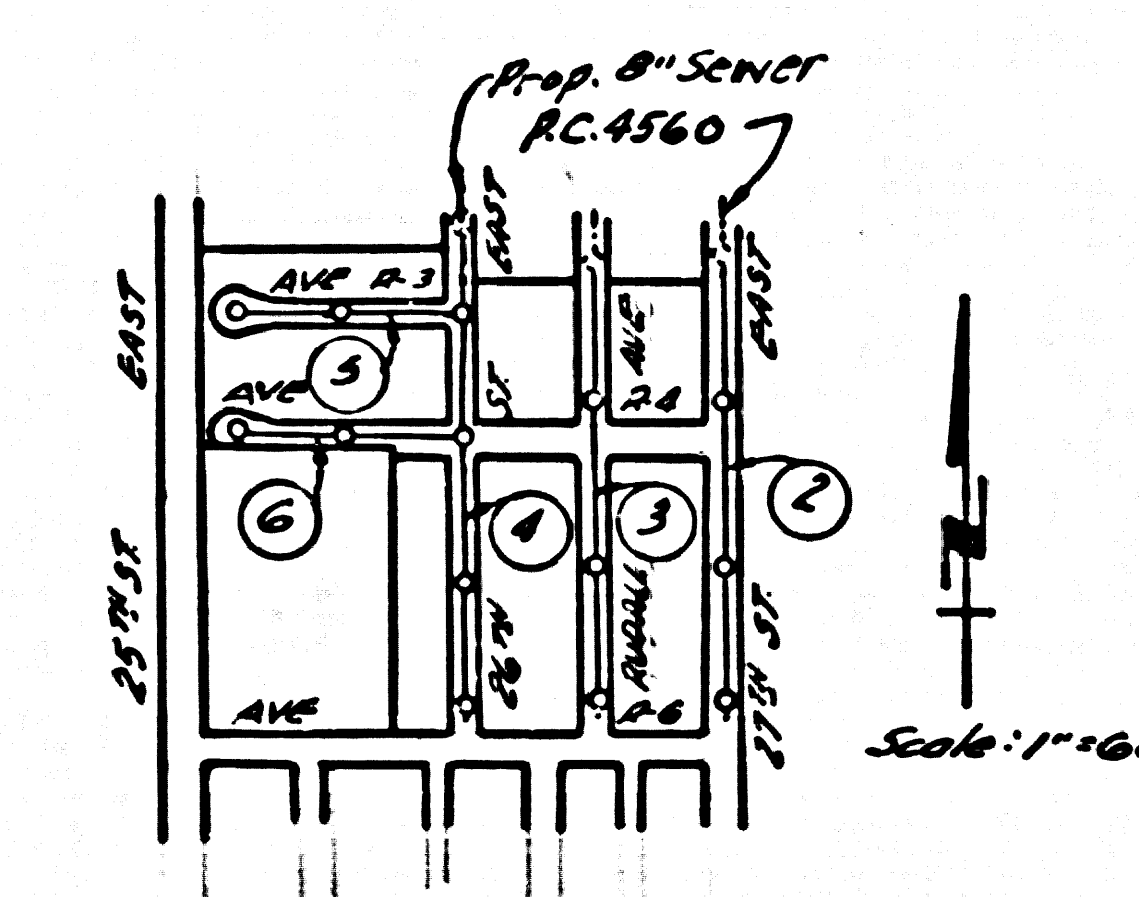


PALMDALE BLDG. DIST. NO. 8.1

PROFILE ALIGNMENT AND GRADE OF P.C. 4559
 SANITARY SEWERS PAGE 1
 TO BE CONSTRUCTED IN
 TRACT No 23512

BM U.S. W-416 CI 2669.237 a sht. disk set on top of a conc. post, about 40 mi. along the S.P.R.R. from RR. Sta. at Palmdale, 32' N.E. of RR. sign S-4142, 36' East of E of main T., 61' N.E. of a spur track switch stand & 11 S.W. of a pole.



INDEX MAP
 TRACT No 23512
 R.C. 4559

- NOTES:
- PROVIDE STAKES ON THE PROPERTY LINE OR PROPERTY LINES PRODUCED AT RIGHT ANGLES TO THE SEWER LINE AT THE CENTER LINE OF EACH MANHOLE.
 - NO REPRESENTATIVE OF THE COUNTY ENGINEER WILL SURVEY OR LAYOUT ANY PORTION OF THE WORK.
 - THE OWNER OR HIS AUTHORIZED REPRESENTATIVE SHALL FURNISH THE COUNTY ENGINEER WITH GRADE SHEETS AND STATION FOR ALL HOUSE LATERALS AND Y BRANCHES AND SHALL PROVIDE STAKES FOR THEM AT THEIR PROPER LOCATIONS WITH STATIONING PLAINLY MARKED. ANY CHANGE IN LOCATION SHALL BE REQUESTED IN WRITING BY THE OWNER OR HIS REPRESENTATIVE.
 - NO REVISIONS SHALL BE MADE IN THESE PLANS WITHOUT THE APPROVAL OF THE COUNTY ENGINEER.
 - USE STANDARD MANHOLE FRAMES AND COVERS, S.A-117, EXCEPT AS NOTED.
 - USE STANDARD STRENGTH PIPE EXCEPT AS NOTED.
 - USE CEMENT MORTAR FOR ALL VITRIFIED CLAY PIPE JOINTS.
 - RESURFACE ALL TRENCH WITHIN PAVED AREA TO MEET L. A. COUNTY ROAD DEPT., OR CALIF. STATE HIGHWAY DEPT. REQUIREMENTS IN ACCORDANCE WITH PERMITS.
 - ENCASE FOUR FEET OF SEWER AT POINTS OF INTERFERENCE WITH POLES, S.A-119.
 - HOUSE LATERALS TO BE CONSTRUCTED WITH INVERTS AT PROPERTY LINE. 6 FEET BELOW CURB GRADE EXCEPT AS NOTED.
 - ALL STRUCTURES SHALL BE BRICK SEWER STRUCTURES, S.A-104, EXCEPT AS NOTED.
 - FOR ALLOWABLE LEAKAGE TEST USE FORMULA NO. 1 SPCS., SEC. 36.
 - MANHOLE TOPS IN UNIMPROVED RIGHTS-OF-WAY TO BE 6" ABOVE FINISHED GRADE.
 - Soil all pipe joints with 4" cement mortar that are within 20 feet of all property lines.
 - The Private Engineer is to furnish the house lateral depth at the property line below the top of curb elevation for each house lateral on the grade sheet.

NOTE:
 THE CONTRACTOR SHALL NOTIFY THE CONSTRUCTION AND STORM DRAIN DIVISION BY TELEPHONE, WHITEHALL 2840 EXT 40, AT LEAST 24 HOURS BEFORE STARTING ANY WORK UNDER THIS CONTRACT.

COLLECT CHARGES AS INDICATED
 A.R. O'Leary 11/21/57

DO NOT ISSUE HOUSE SEWER PERMITS UNTIL TRACT NOS 23939 AND 23512 HAVE BEEN RECORDED

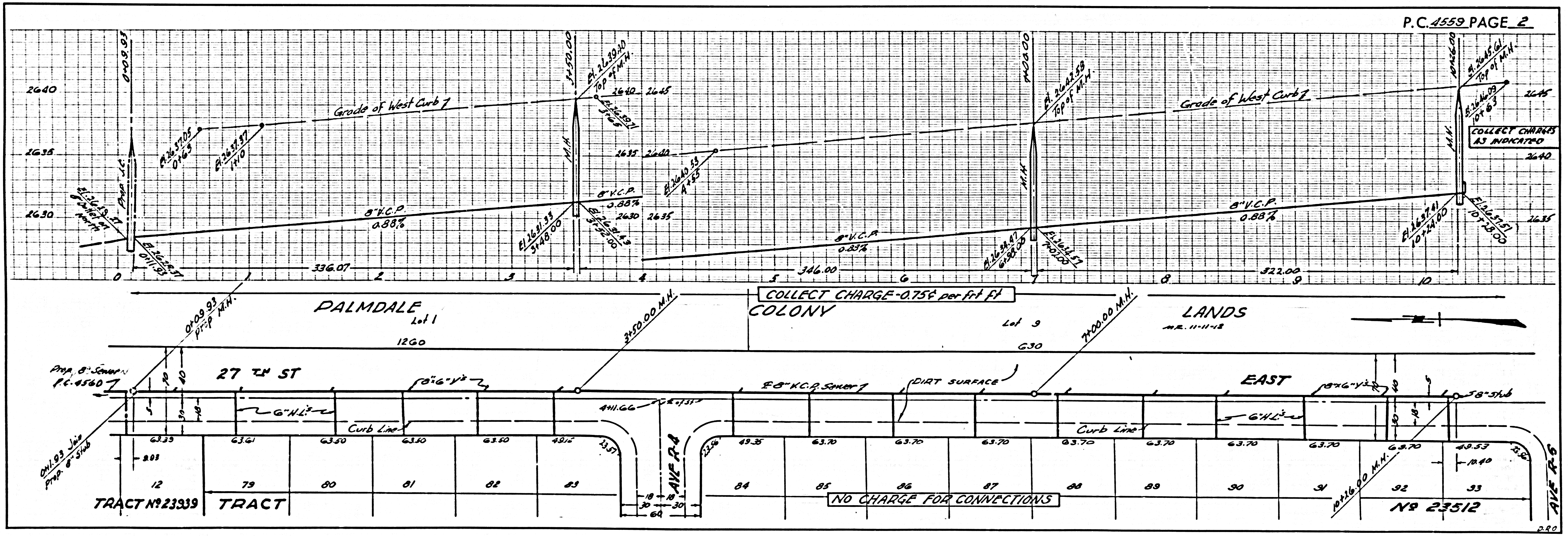
PRIVATE CONTRACT NO. 4559

W.S. 65
 3 SHEETS, 6 PAGES
 SCALE: VERT. 1" = 4' HORIZ. 1" = 40'
 SEPT. 1957
 PREPARED IN THE OFFICES OF
 D.L. STUCKEY ENGINEERING CO.
 1110 S. E. NO. 6067
 FOR LEGEND SEE PLAN NO. S-A-64

NOTE:
 GRADES TO WHICH THIS IMPROVEMENT IS TO BE CONSTRUCTED ARE SHOWN ON PLANS AND PROFILES. GRADE POINTS FOR TOP OF CURBS, CENTER LINE OF STREETS, OR CENTER LINE OF ALLEYS ARE SHOWN BY CIRCLES ON PROFILES AT ALL POINTS BETWEEN DESIGNATED POINTS THE GRADE SHALL BE ESTABLISHED SO AS TO CONFORM TO A STRAIGHT LINE DRAWN BETWEEN SAID DESIGNATED POINTS.
 ELEVATIONS ARE IN FEET ABOVE U.S.C. & G.S. SEA LEVEL DATUM OF 1929.
 THIS DRAWING AND THE DATA HEREON ARE HEREBY MADE A PART OF THE SPECIFICATIONS.
 BEFORE WORK CAN BE STARTED, THE CONTRACTOR MUST OBTAIN A PERMIT TO EXCAVATE IN COUNTY STREETS FROM THE L. A. COUNTY ROAD DEPT., 108 W. 2ND ST. AND MAKE A DEPOSIT WITH THE COUNTY ENGINEER, ROOM 234 FARM ANCHOR BUILDING, 225 SO. BROADWAY SUFFICIENT TO COVER THE COST OF CONSTRUCTION INSPECTION AND RECORD PLANS.
 APPROVAL OF THIS PLAN BY THE COUNTY OF LOS ANGELES DOES NOT CONSTITUTE A REPRESENTATION AS TO THE ACCURACY OF THE LOCATION OF OR THE EXISTENCE OR NON-EXISTENCE OF ANY UNDERGROUND UTILITY PIPE, OR STRUCTURE WITHIN THE LIMITS OF THIS PROJECT. THIS NOTE APPLIES TO ALL PAGES.
 IF WORK IS TO BE DONE IN A STATE HIGHWAY, A PERMIT MUST BE OBTAINED FROM THE STATE OF CALIFORNIA, DIVISION OF HIGHWAYS, 128 SOUTH SPRING STREET.

COUNTY OF LOS ANGELES, CALIFORNIA

APPROVED, JOHN A. LAMBIE, COUNTY ENGINEER APPROVED, A. M. RAWN, CHIEF ENGINEER
 TO SAN. DIST. NO. 20
 BY: J. A. Hughes SANITATION ENGINEER BY: J. C. Posthumus OFFICE ENGINEER
 CHECKED BY: J. P. Kuhman 11-25-57
 OFFICE OF COUNTY ENGINEER, REG. C. E. NO. 7860



P.C. 4559 PAGE 2

COLLECT CHARGE - 0.75¢ per ft ft
 COLONY

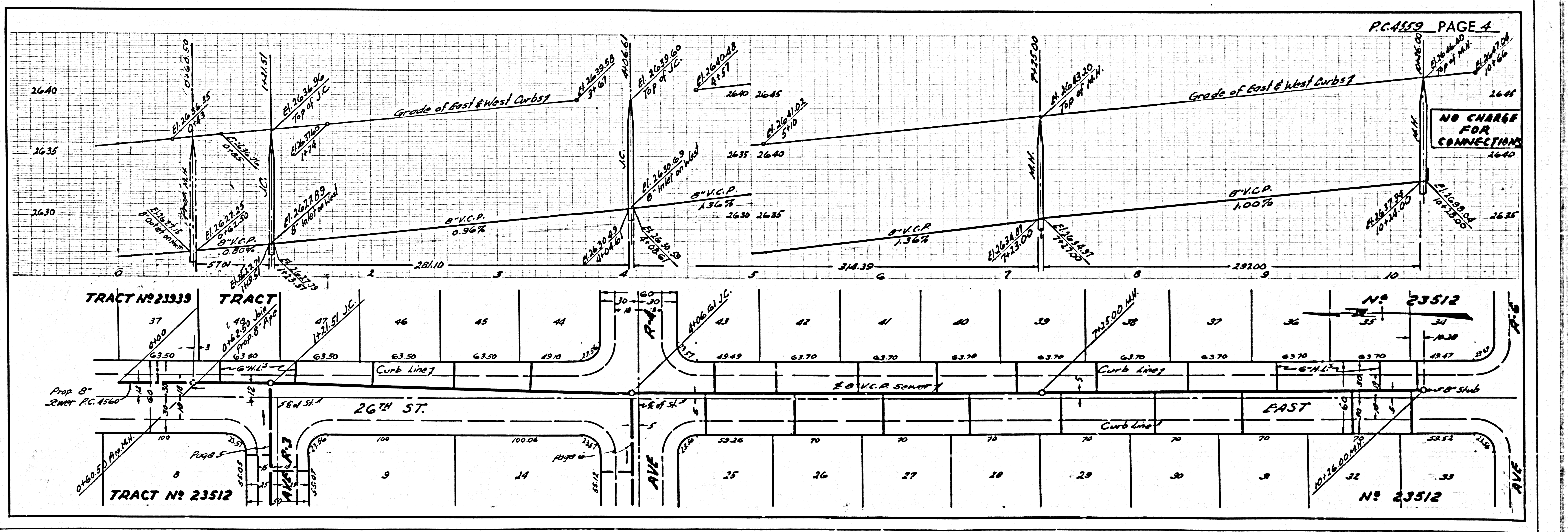
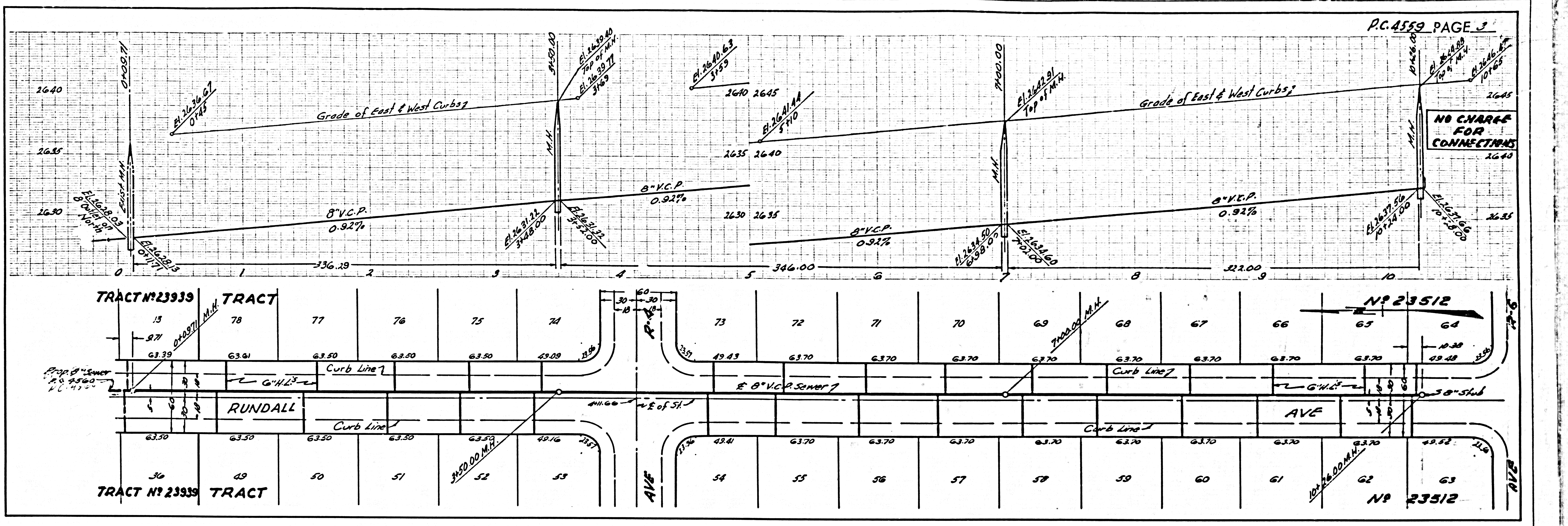
LANDS
 A.R. 11-11-12

TRACT No 23939

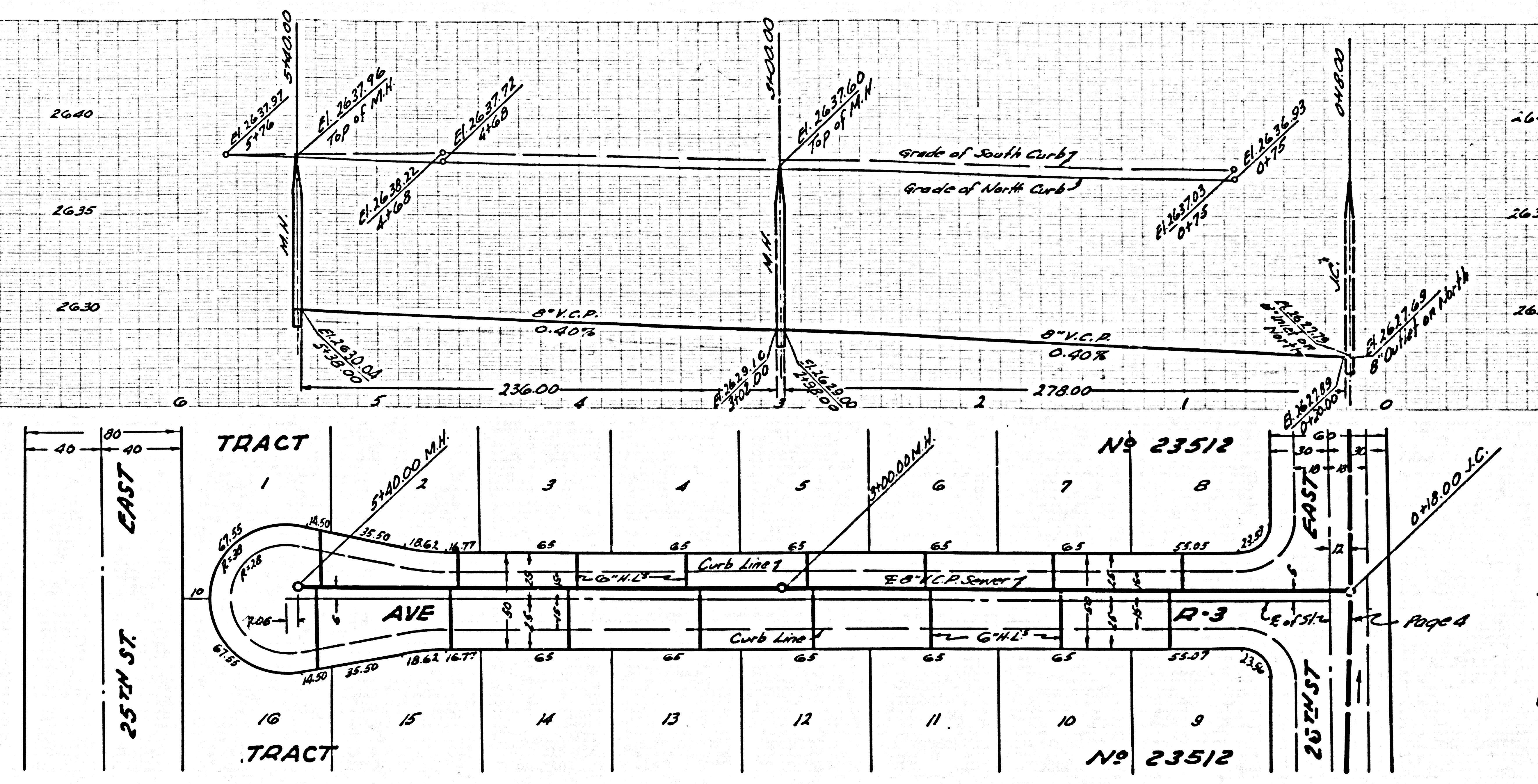
TRACT

NO CHARGE FOR CONNECTIONS

TRACT No 23512



NO CHARGE FOR CONNECTIONS



COLLECT CHARGES AS INDICATED

