

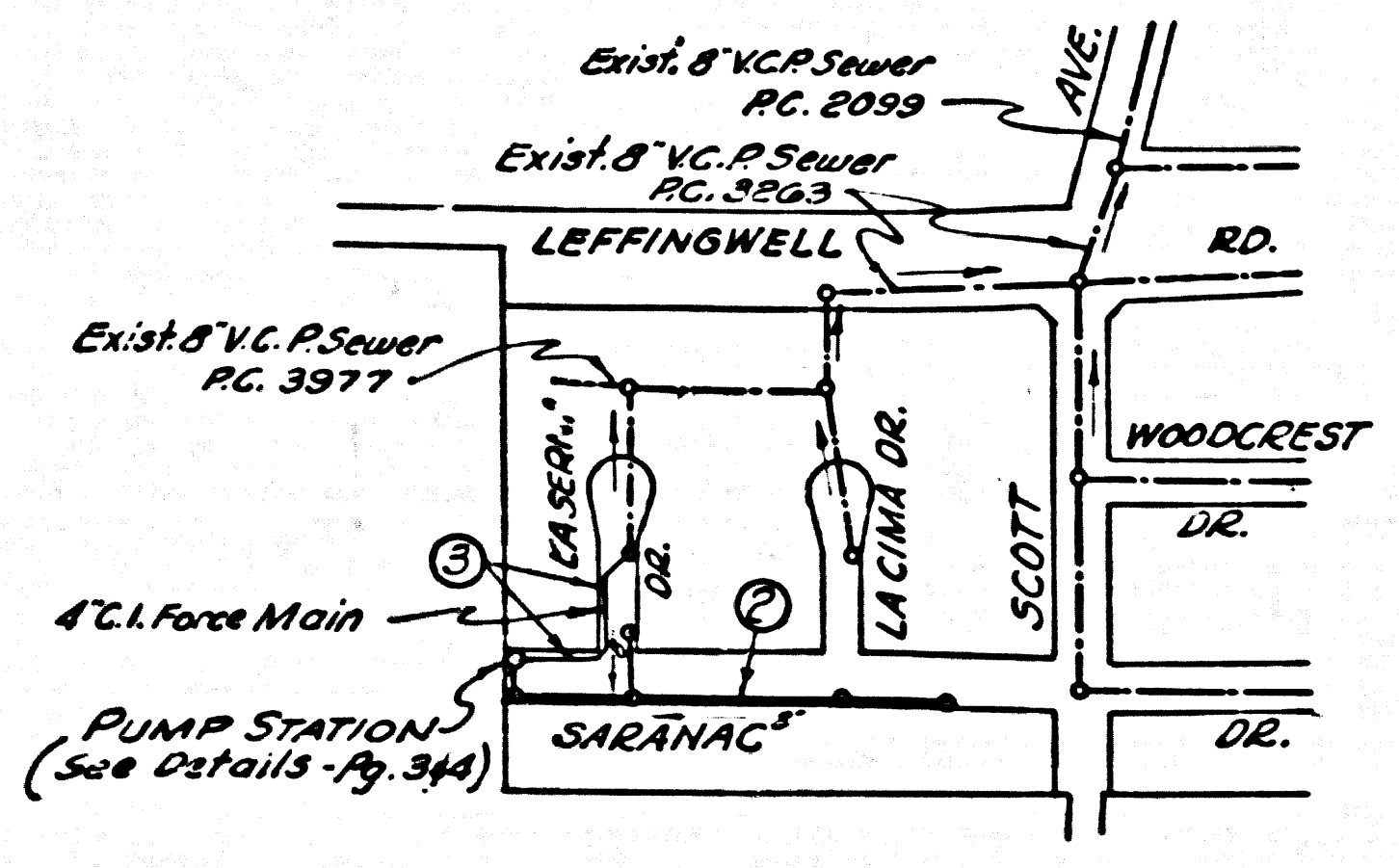
NORWALK BLDG. DIST. NO. 4.2

PROFILE ALIGNMENT AND GRADE OF P.C. 4565
 SANITARY SEWERS PAGE 1
 TO BE CONSTRUCTED IN
TRACT No 18708 (25,987)
 M.B. 564-23

PRIVATE CONTRACT NO. 4565
 W.S. 34
 2 SHEETS, 4 PAGES
 SCALE: VERT. 1"=4'
 HORIZ. 1"=40'
 SEPT., 1957
 PREPARED IN THE OFFICES OF
KEMMERER ENGR. CO., INC.
 BY: *Paul C. Jensen*
 REG. C. E. NO. 8211
 FOR LEGEND SEE PLAN NO. S-A-64

- NOTES:
- PROVIDE STAKES ON THE PROPERTY LINE OR PROPERTY LINES PRODUCED AT RIGHT ANGLES TO THE SEWER LINE AT THE CENTER LINE OF EACH MANHOLE.
 - NO REPRESENTATIVE OF THE COUNTY ENGINEER WILL SURVEY OR LAYOUT ANY PORTION OF THE WORK.
 - THE OWNER OR HIS AUTHORIZED REPRESENTATIVE SHALL FURNISH THE COUNTY ENGINEER WITH GRADE SHEETS AND STATION FOR ALL HOUSE LATERALS AND Y BRANCHES AND SHALL PROVIDE STAKES FOR THEM AT THEIR PROPER LOCATIONS WITH STATIONING PLAINLY MARKED. ANY CHANGE IN LOCATION SHALL BE REQUESTED BY WRITING BY THE OWNER OR HIS REPRESENTATIVE.
 - NO REVISIONS SHALL BE MADE IN THESE PLANS WITHOUT THE APPROVAL OF THE COUNTY ENGINEER.
 - USE STANDARD MANHOLE FRAMES AND COVERS, S.A-117, EXCEPT AS NOTED.
 - USE STANDARD STRENGTH PIPE EXCEPT AS NOTED.
 - USE METAL FORMS AND GASKETS FOR ALL REINFORCED CLAY PIPE JOINTS, WEDGE-LOCK OR SPEED-SEAL JOINTS PER SPEC'S SEC. 38 AND 48 MAY BE USED IN LINES OF METAL FORMS AND GASKETS.
 - RESURFACE ALL TRENCH WITH PAVED AREA TO MEET L.A. COUNTY ROAD DEPT. OR CALIF. STATE HIGHWAY DEPT. REQUIREMENTS IN ACCORDANCE WITH PERMITS.
 - ENCASE FOUR FEET OF SEWER AT POINTS OF INTERFERENCE WITH POLES, S.A-119.
 - HOUSE LATERALS TO BE CONSTRUCTED WITH INVERTS AT PROPERTY LINE 2 FEET BELOW CURB GRADE EXCEPT AS NOTED.
 - ALL STRUCTURES SHALL BE BRICK SEWER STRUCTURES, S.A-104, EXCEPT AS NOTED.
 - FOR ALLOWABLE LEAKAGE TEST USE FORMULA NO. 2 SPEC'S, SEC. 38.
 - MANHOLE TOPS IN UNIMPROVED RIGHTS-OF-WAY TO BE 6" ABOVE FINISHED GRADE.
 - THE PRIVATE ENGINEER IS TO FURNISH THE HOUSE LATERAL DEPTH AT THE PROPERTY LINE BELOW THE TOP OF CURB ELEVATION FOR EACH HOUSE LATERAL ON THE GRADE SHEET.

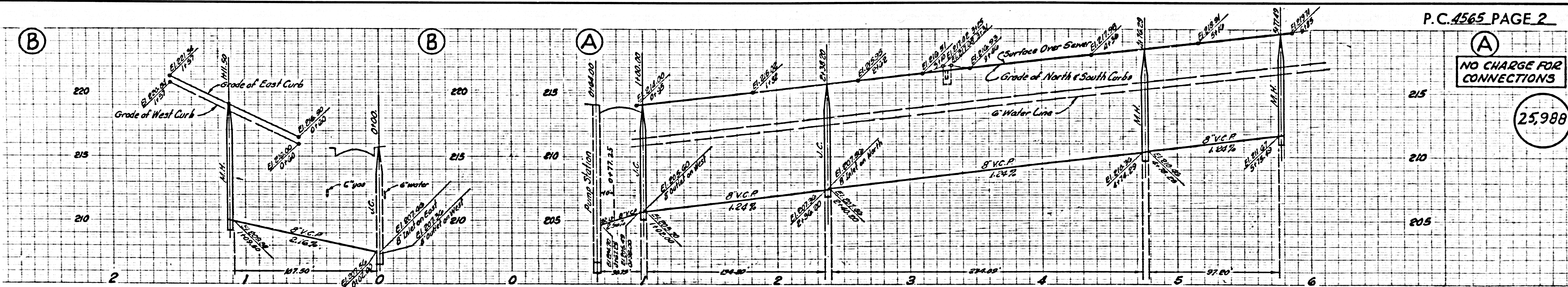
NOTE:
 THE CONTRACTOR SHALL NOTIFY THE CONSTRUCTION AND STORM DRAIN DIVISION BY TELEPHONE, MADISON 9-4747, EXT. 862, AT LEAST 24 HOURS BEFORE STARTING ANY WORK UNDER THIS CONTRACT.



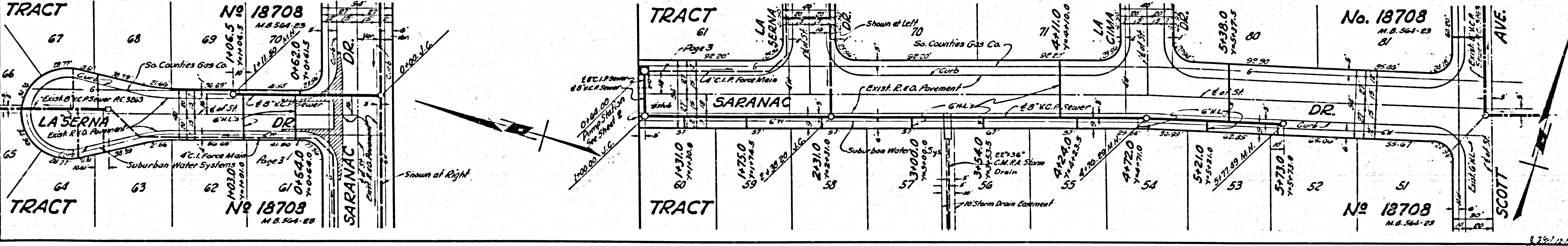
INDEX MAP
 Scale - 1" = 300'
 PG. 4565 TRACT No 18708
 M.B. 564-23

B.M. S.Y. 1153, 1952 C.S. Monument
 13' East of Intersection of Stany Rd.
 (Running North) & Leffingwell Rd. 3'
 South of & Leffingwell Rd.
 ELEV. 225.487

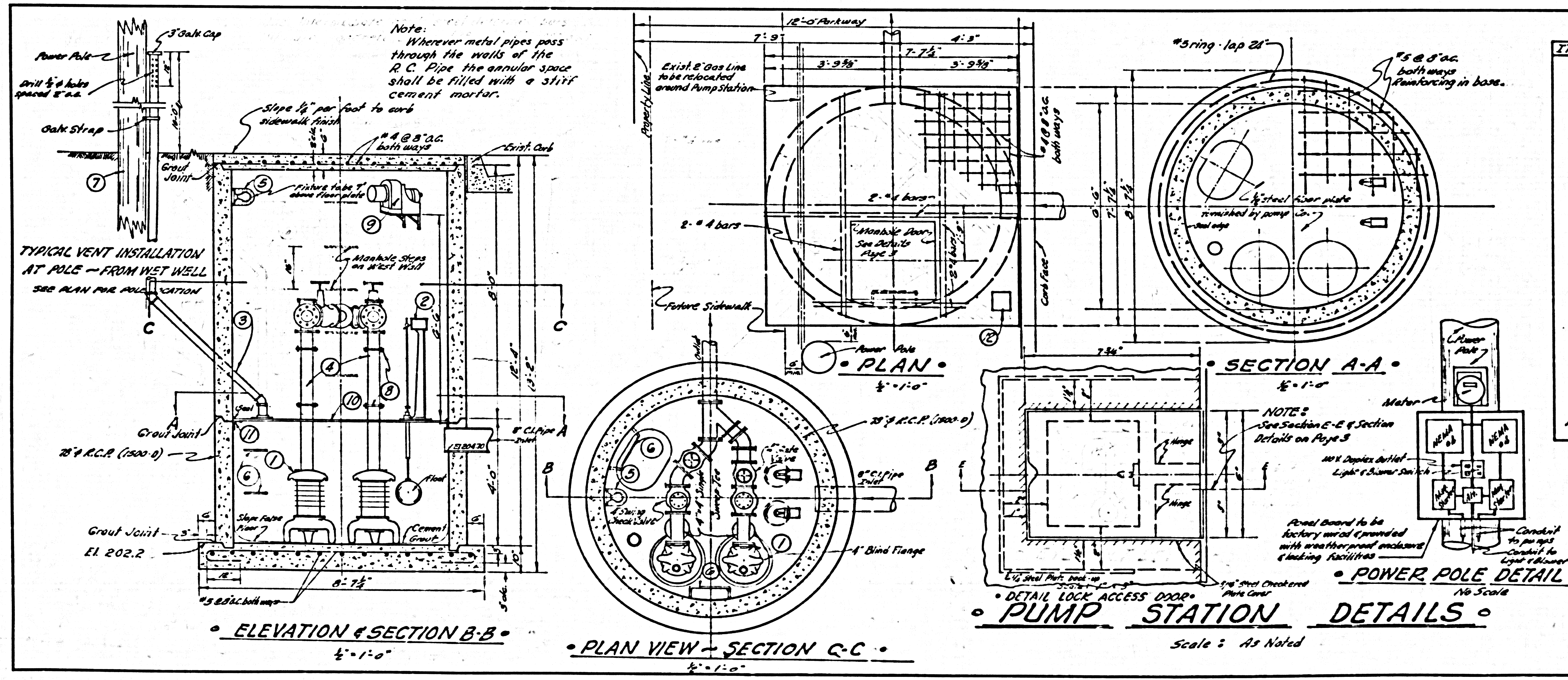
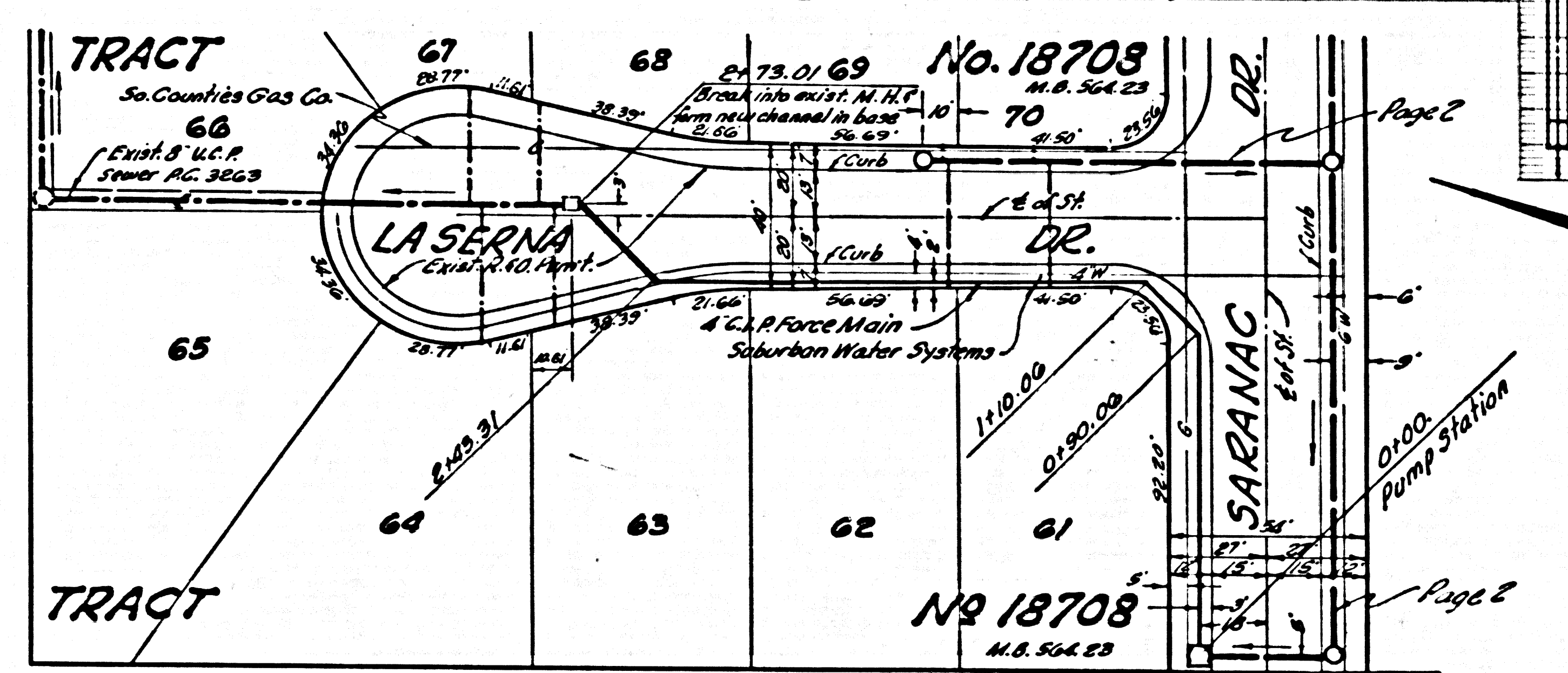
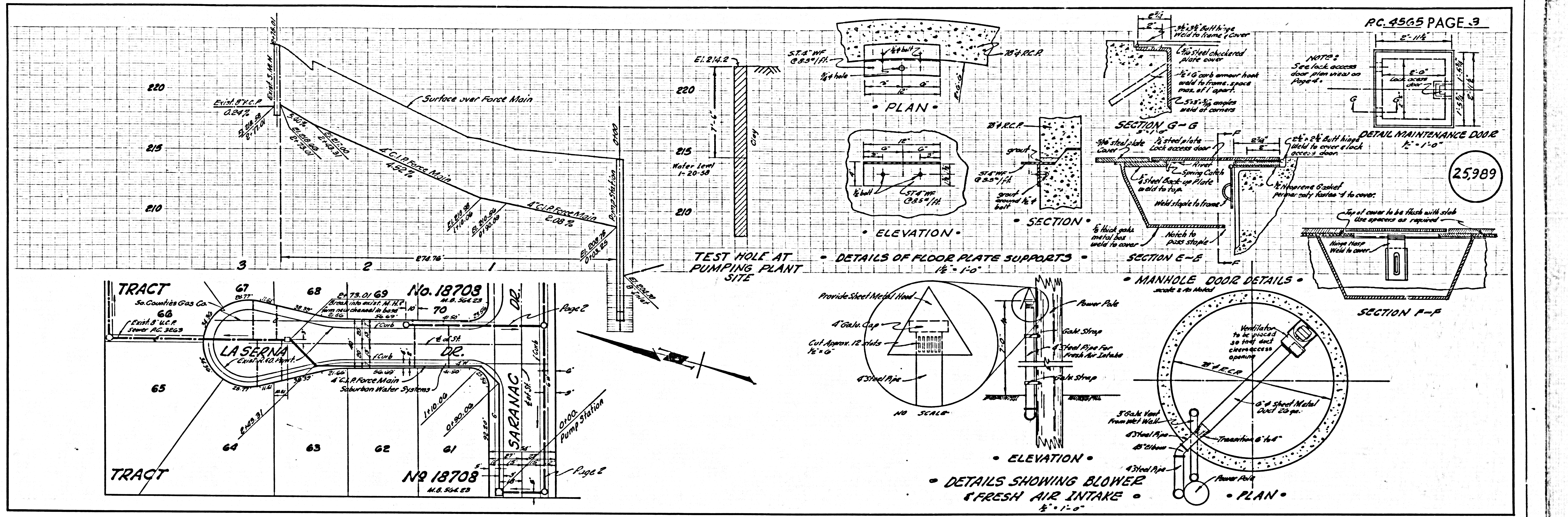
NO CHARGE FOR CONNECTIONS
August 17-58



P.C. 4565 PAGE 2
 (A) NO CHARGE FOR CONNECTIONS
 (25,988)



MH J.L. J.L. MH MH



ITEM	QUANTITY	DESCRIPTION
1	2	Weil Model 52 871 4" discharge duplex submersible sewage ejector, 1 1/2 hp, 1750 r.p.m. 20 1/2" x 4, 60 cycle A.C. 3 ph.
2	2	NEMA # 7 Float Switch Controls
3	20 lin. ft.	5" Galv. Iron Pipe
4	12 lin. ft.	4" C.I. Pipe (in pump station only)
5	1	150 Watt explosion proof lighting fixture with guard.
6	7	Std. Manhole steps per S.A. 162. Spread 16" o.c.
7	25 lin. ft.	Crescoted Wooden Pole.
8	4	4" Victaulic Couplings & 6" x 6" Floor plate, 2" x 6" elbow Flange.
9	1	American Blower Co. Model # 60W Ventilator Expansion Proof 110 H. Single Phase
10	1	1/2" steel plate Duplex Basin Cover #1 20M See Detail Dwg. furnished by Weil Pump Co.
11	8	5/8" WF @ 8.5" O.C. 1'-0" lengths. See Detail on Page 2. Center each piece at bolt hole in floor plate.
12	1	Special Brass Street Washer (Alhambra Foundry A-392 A or equiv.)

GENERAL NOTES

Power service shall be brought to Power Panel Board and all electrical connections made. Electrical conduit shall be underground from power pole to pump station. All exposed iron parts to be painted with Epoxy Bitumastic Plastic paint or equal.

Water service to be brought to street outside Pump Station. Contractor to furnish watertight seal around outside edge of steel floor plate.

Concrete shall obtain an ultimate unit compressive strength of 2500 pounds per square inch in 28 days.

Reinforcing steel shall be intermediate grade deformed bars.

All bar bends & hooks shall conform to the American Concrete Institute Manual of Standard Practice.

Bolt & Spigot cast iron pipe shall be class 150.

Cast iron pipe flanges & flanged fittings shall be class 125.