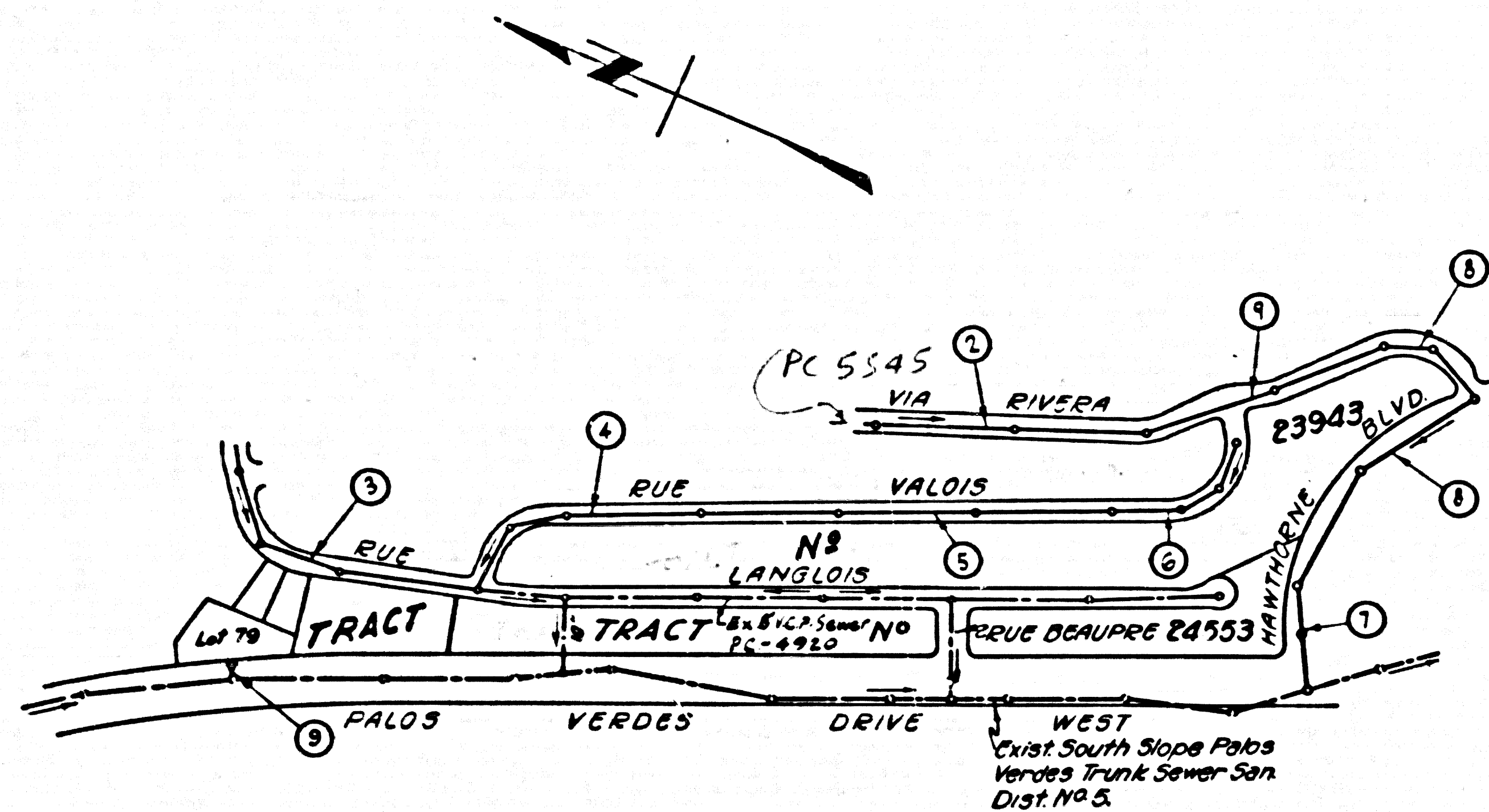


BENCHMARK  
Palos Verdes Dr West 1 Mi. N. Point  
Vicente Lighthouse 46' W of E. Dr.  
at a cluster of 9 Eucalyptus trees.  
A 3rd C.S. mon. stamped BM 34-28  
1954 R.E. 63" set flush with surface.  
F.B. 1355-31 1953 Adj. Elev. 247621.



INDEX MAP  
TRACT NO. 23943  
P.C. 4567  
SCALE 1"=100'

REVISION: Page 9, added  
Mainline and House Lateral  
for Lot 79

Approved: *C.R. Compton*  
Assistant Division Engineer  
3-31-60  
APPROVED C.R. COMPTON,  
CHIEF  
ENGINEER  
CO. SAN. DISTRICT NO. 5  
BY: *E.H. Hughes*  
OFFICE ENGINEER  
DATE:

NO CHARGE FOR  
CONNECTIONS

W. Mitchell 6-1-59

LOMITA BLDG. DIST. NO. 71

NOTES:  
PROVIDE STAKES ON THE PROPERTY LINE OR PROPERTY LINES PRODUCED AT RIGHT ANGLES TO THE SEWER LINE AT THE CENTER LINE OF EACH BRANCH.  
NO REPRESENTATIVE OF THE COUNTY ENGINEER WILL SURVEY OR LAYOUT ANY PORTION OF THE WORK.  
THE OWNER OR HIS AUTHORIZED REPRESENTATIVE SHALL FURNISH THE COUNTY ENGINEER WITH GRADE SHEETS AND STATION FOR ALL HOUSE LATERALS AND T-BRANCHES AND SHALL PROVIDE STAKES FOR THEM AT THEIR PROPER LOCATIONS WITH STATIONING PLAINLY MARKED. ANY CHANGE IN LOCATION SHALL BE REQUESTED IN WRITING BY THE OWNER OR HIS REPRESENTATIVE.  
NO REVISIONS SHALL BE MADE IN THESE PLANS WITHOUT THE APPROVAL OF THE COUNTY ENGINEER.

- USE STANDARD MANHOLE FRAMES AND COVERS, S-A-117, EXCEPT AS NOTED.
- USE STANDARD STRENGTH PIPE EXCEPT AS NOTED.
- USE CEMENT MORTAR OR "WEDGE-JOINT" OR "SPRUE-SEAL" FOR ALL U.L.E. JOINTS PER SPEC'S, SECT. 34-148.
- RESURFACE ALL TRENCH WITHIN PAVED AREA TO MEET L.A. COUNTY ROAD DEPT. OR CALIF. STATE HIGHWAY DEPT. REQUIREMENTS IN ACCORDANCE WITH PERMITS.
- INCASE FOUR FEET OF SEWER AT POINTS OF INTERFERENCE WITH POLES, CASE III, S-A-117E.
- HOUSE LATERALS TO BE CONSTRUCTED WITH INVERTS AT PROPERTY LINE 8 FEET BELOW CURB GRADE EXCEPT AS NOTED.
- ALL STRUCTURES SHALL BE BRICK SEWER STRUCTURES, S-A-184, EXCEPT AS NOTED.
- FOR ALLOWABLE LEAKAGE TEST USE FORMULA NO. 1 SPEC'S, SEC. 84.
- MANHOLE TOPS IN UNIMPROVED RIGHTS-OF-WAY TO BE 6" ABOVE FINISHED GRADE.
- THE PRIVATE ENGINEER IS TO FURNISH THE HOUSE LATERAL DEPTH AT THE PROPERTY LINE BELOW THE TOP OF CURB ELEVATION PER EACH HOUSE LATERAL ON THE GRADE SHEET.
- THE CONTRACTOR SHALL NOTIFY THE CONSTRUCTION AND STORM DRAIN DIVISION BY TELEPHONE, MARSHON 9-882, EXT. 262, AT LEAST 24 HOURS BEFORE STARTING ANY WORK UNDER THIS CONTRACT.
- NO CONSTRUCTION WILL BE PERMITTED IN FILLED AREAS UNLESS ACCEPTABLE CERTIFICATION IS SUBMITTED TO THE CONSTRUCTION DIVISION OF THE COUNTY ENGINEER'S DEPARTMENT THAT RELATIVE COMPACTION IS GREATER THAN 90%.
- IF COMPACTION IS LESS THAN 90%, THE SEWER MUST BE CRODDED AS SHOWN ON THE PLANS PER S-A-184.
- IF COMPACTION IS GREATER THAN 90%, CRODDED IS NOT REQUIRED. HOWEVER, JOINT COMPOUND MUST BE SUBSTITUTED FOR CEMENT MORTAR FOR ALL JOINTS IN FILLED AREAS. IF COMPACTION IS GREATER THAN 90%, SPECIAL M.H. BASES ARE NOT REQ'D.
- STANDARD SPECIFICATIONS DATED MAY 15, 1959 APPLY IN THE CONSTRUCTION OF THIS PROJECT.

ENGINEERING SERVICE CORPORATION  
1127 W. WASHINGTON BLVD.  
LOS ANGELES 15, CALIF. RI. 9-7281

| REVISIONS | TRACED BY       |
|-----------|-----------------|
|           | MITS            |
|           | DES'G'D BY C.O. |
|           | CK'D BY         |
|           | SUBMITTED       |

| W. O. NO. | DWG. NO. | DATE     | SCALE    | L. B. | P. B. |
|-----------|----------|----------|----------|-------|-------|
| 6681-120  |          | SEPT. 58 | AS SHOWN |       |       |

PROFILE ALIGNMENT AND GRADE OF P.C. 4567  
SANITARY SEWERS PAGE 1  
TO BE CONSTRUCTED IN  
TRACT NO. 23943

PRIVATE CONTRACT NO. 4567

W.S. 27  
5 SHEETS; 9 PAGES

SCALE: VERT. 1"=4' HORIZ. 1"=40' SEPTEMBER, 1958

PREPARED IN THE OFFICES OF  
ENGINEERING SERVICE CORPORATION

29,106

BY: *E.H. Hughes*  
REG. C.E. NO. 3692  
FOR LEGEND SEE PLAN NO. S-A-64

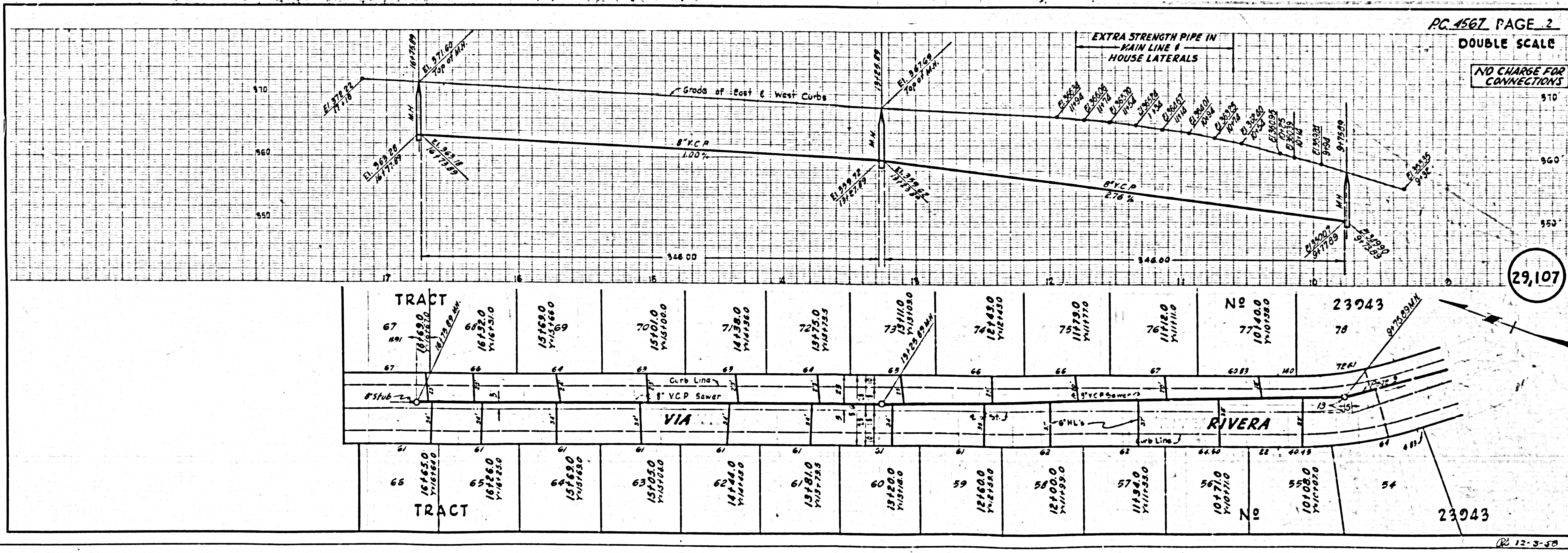
NOTES:  
GRADES TO WHICH THIS IMPROVEMENT IS TO BE CONSTRUCTED ARE SHOWN ON PLANS AND PROFILES. GRADE POINTS FOR TOP OF CURB, CENTER LINE OF STREETS, OR CENTER LINE OF ALLEYS ARE SHOWN BY CIRCLES ON PROFILES. AT ALL POINTS BETWEEN DESIGNATED POINTS THE GRADE SHALL BE ESTABLISHED SO AS TO CONFORM TO A STRAIGHT LINE DRAWN BETWEEN SAID DESIGNATED POINTS.  
ELEVATIONS ARE IN FEET ABOVE U.S. S. & S. SEA LEVEL DATUM OF 1929.  
THIS DRAWING AND THE DATA HEREON ARE HEREBY MADE A PART OF THE SPECIFICATIONS.  
WORK SHALL BE CONSTRUCTED ACCORDING TO SPECIFICATIONS ON FILE IN THE OFFICE OF THE COUNTY ENGINEER AND SHALL BE PROSECUTED ONLY IN THE PRESENCE OF THE COUNTY ENGINEER.  
BEFORE WORK CAN BE STARTED, THE CONTRACTOR MUST OBTAIN A PERMIT TO EXCAVATE IN COUNTY STREETS FROM THE L.A. COUNTY ROAD DEPT., DISTRICT NO. 5, AND MAKE A DEPOSIT WITH THE COUNTY ENGINEER, ROOM 324 PAM AMERICAN BUILDING, 215 SO. BROADWAY SUFFICIENT TO COVER THE COST OF CONSTRUCTION INSPECTION AND RECORD PLANS.  
APPROVAL OF THIS PLAN BY THE COUNTY OF LOS ANGELES DOES NOT CONSTITUTE A REPRESENTATION AS TO THE ACCURACY OF THE LOCATION OF OR THE EXISTENCE OF ANY UNDERGROUND UTILITY PIPE, OR STRUCTURE WITHIN THE LIMITS OF THE PROJECT. THIS NOTE APPLIES TO ALL PAGES.  
IF WORK IS TO BE DONE BY A STATE HIGHWAY, A PERMIT MUST BE OBTAINED FROM THE STATE OF CALIFORNIA, DIVISION OF HIGHWAYS, 128 SOUTH SPRING STREET.

COUNTY OF LOS ANGELES, CALIFORNIA

APPROVED, JOHN A. LAMBE, COUNTY ENGINEER APPROVED, C.R. COMPTON, CHIEF ENGINEER

BY: *E.H. Hughes* *E.H. Hughes*  
SANITATION ENGINEER OFFICE ENGINEER

CHECKED BY: *E.H. Hughes*  
OFFICE OF COUNTY ENGINEER, BUL. C. & NO. 9406

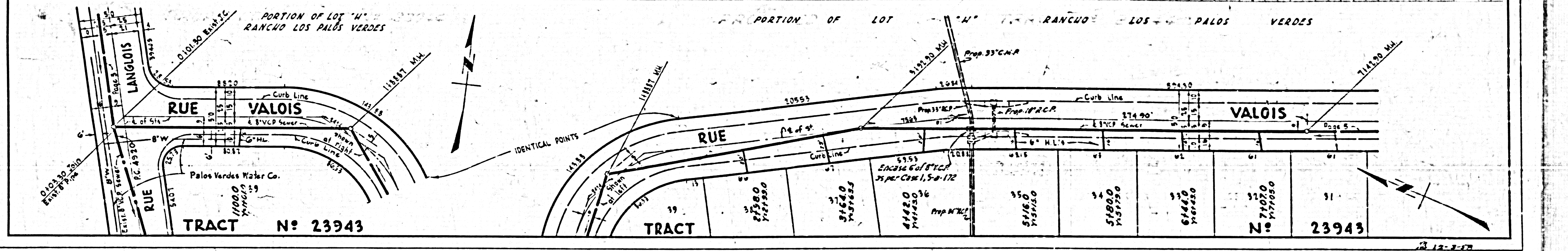
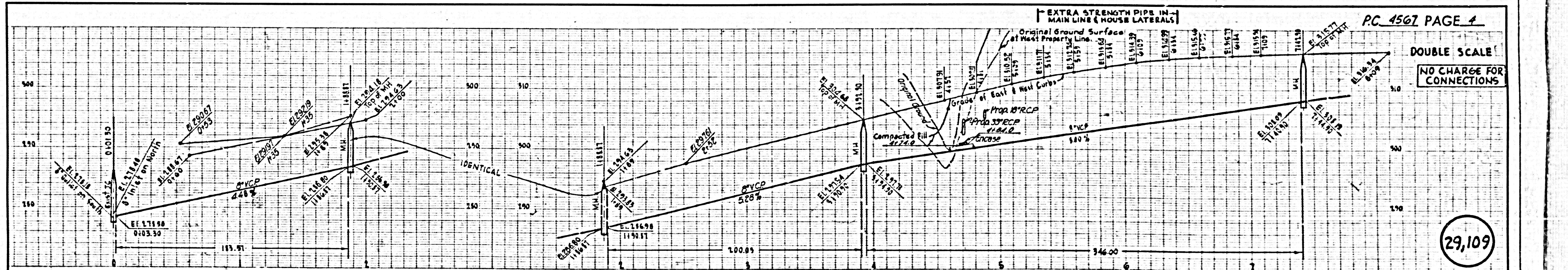
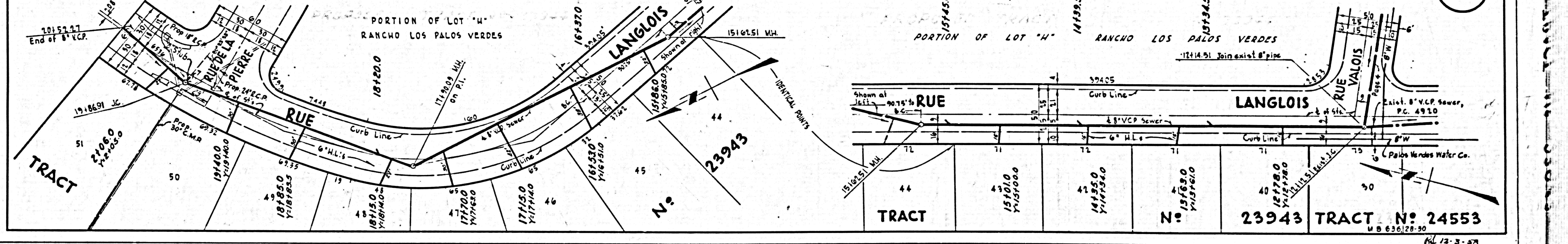
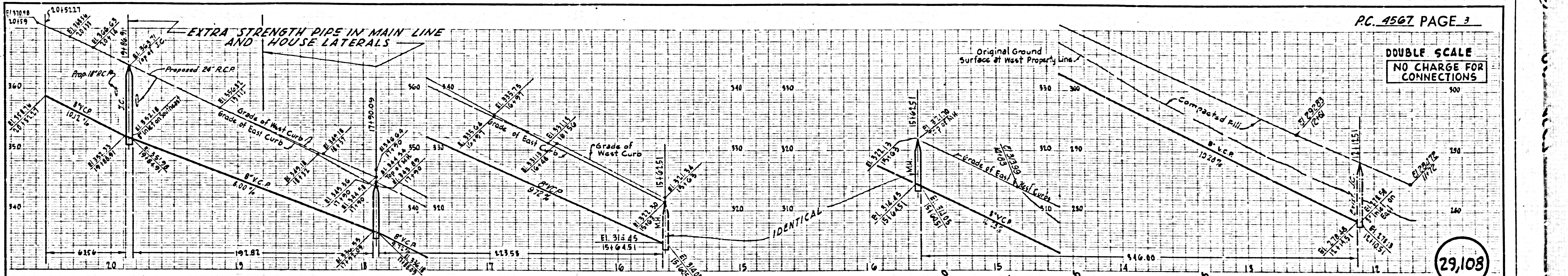


P.C. 4567, PAGE 2  
DOUBLE SCALE  
NO CHARGE FOR CONNECTIONS

29,107

PL 12-3-58

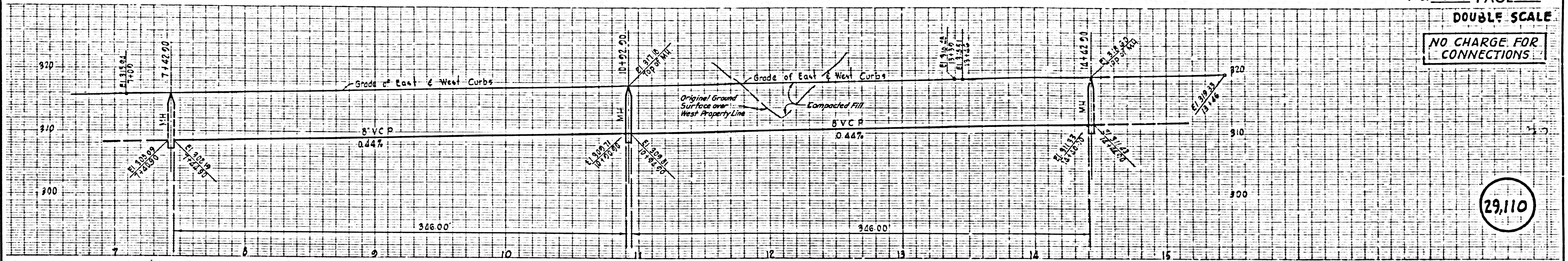






DOUBLE SCALE

NO CHARGE FOR CONNECTIONS

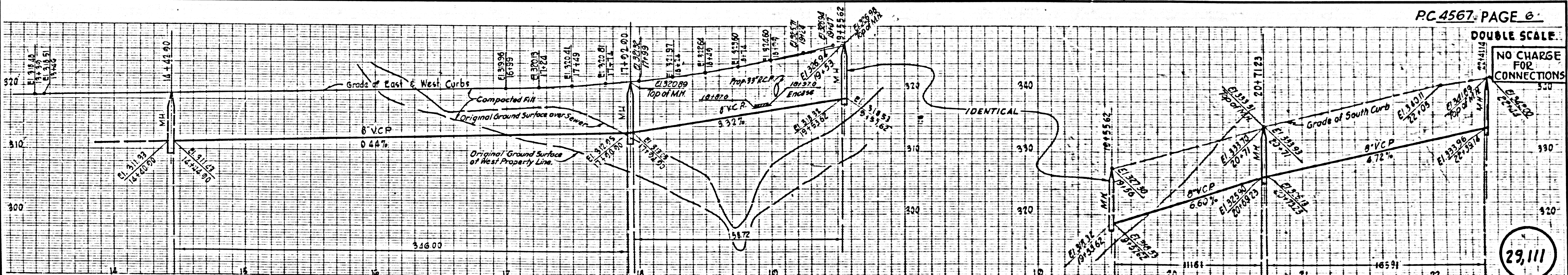


| PORTION OF LOT "W" RANCHO LOS PALOS VERDES |                           | TRACT N° 23943    |                 |            |                 |       |                 |       |                   |    |                   |    |                  |    |                  |    |                   |    |                   |    |                   |    |                  |    |  |
|--|---------------------------|-------------------|-----------------|------------|-----------------|-------|-----------------|-------|-------------------|----|-------------------|----|------------------|----|------------------|----|-------------------|----|-------------------|----|-------------------|----|------------------|----|--|
|  |                           | THESE LOTS SERVED | BY SEWER IN     | VIA RIVERA |                 |       |                 |       |                   |    |                   |    |                  |    |                  |    |                   |    |                   |    |                   |    |                  |    |  |
|  |                           | 66                | 65              | 64         | 63              | 62    | 61              | 60    |                   |    |                   |    |                  |    |                  |    |                   |    |                   |    |                   |    |                  |    |  |
|  |                           | 61.05             | 61.05           | 61.05      | 61.05           | 61.05 | 61.05           | 61.05 |                   |    |                   |    |                  |    |                  |    |                   |    |                   |    |                   |    |                  |    |  |
| 31   | TRACT<br>171570<br>Y11660 | 30                | 81370<br>Y16750 | 29         | 81370<br>Y16750 | 28    | 91370<br>Y16750 | 27    | 101060<br>Y101043 | 26 | 101700<br>Y101680 | 25 | 111270<br>Y11660 | 24 | 111860<br>Y11860 | 23 | 121440<br>Y121430 | 22 | 131080<br>Y131070 | 21 | 131680<br>Y131670 | 20 | 141310<br>Y14253 | 19 |  |

8/12-3-57

DOUBLE SCALE

NO CHARGE FOR CONNECTIONS



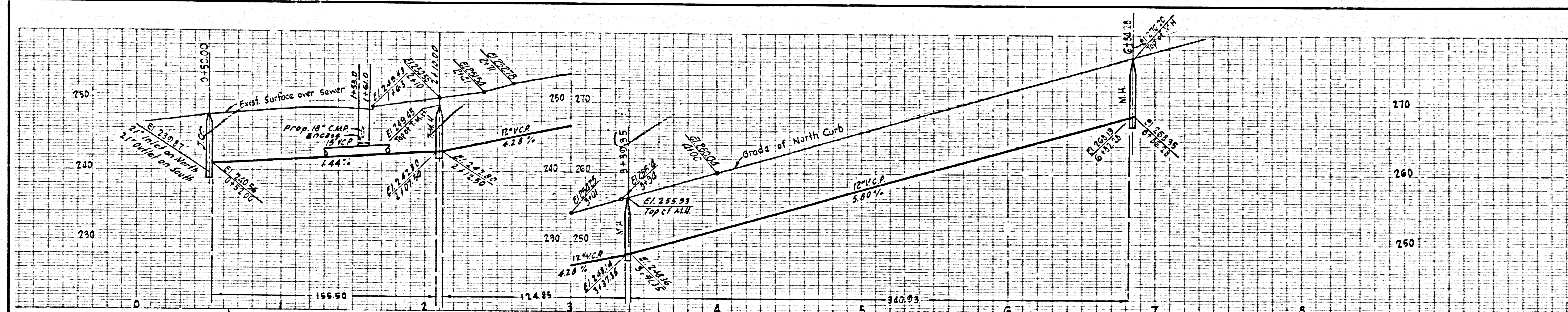
| TRACT |                            | THESE LOTS SERVED | BY SEWER IN       | VIA RIVERA |                   |       |                   |       |                   |       |                   |    |                   |    |                   |    |  |    |  |    |  |   |  |   |  |   |  |   |  |   |  |   |  |   |  |   |  |   |  |
|-------|----------------------------|-------------------|-------------------|------------|-------------------|-------|-------------------|-------|-------------------|-------|-------------------|----|-------------------|----|-------------------|----|--|----|--|----|--|---|--|---|--|---|--|---|--|---|--|---|--|---|--|---|--|---|--|
|       |                            | 61                | 60                | 59         | 58                | 57    | 56                | 55    | 54                | 53    |                   |    |                   |    |                   |    |  |    |  |    |  |   |  |   |  |   |  |   |  |   |  |   |  |   |  |   |  |   |  |
|       |                            | 61.02             | 61.02             | 61.02      | 61.02             | 61.02 | 61.02             | 64.52 | 83.27             | 67.40 |                   |    |                   |    |                   |    |  |    |  |    |  |   |  |   |  |   |  |   |  |   |  |   |  |   |  |   |  |   |  |
| 20    | TRACT<br>141890<br>Y141875 | 19                | 151450<br>Y161210 | 18         | 161090<br>Y161070 | 17    | 161590<br>Y161703 | 16    | 171330<br>Y171310 | 15    | 181020<br>Y181010 | 14 | 181360<br>Y181350 | 13 | 191170<br>Y191160 | 12 |  | 11 |  | 10 |  | 9 |  | 8 |  | 7 |  | 6 |  | 5 |  | 4 |  | 3 |  | 2 |  | 1 |  |

8/12-3-57

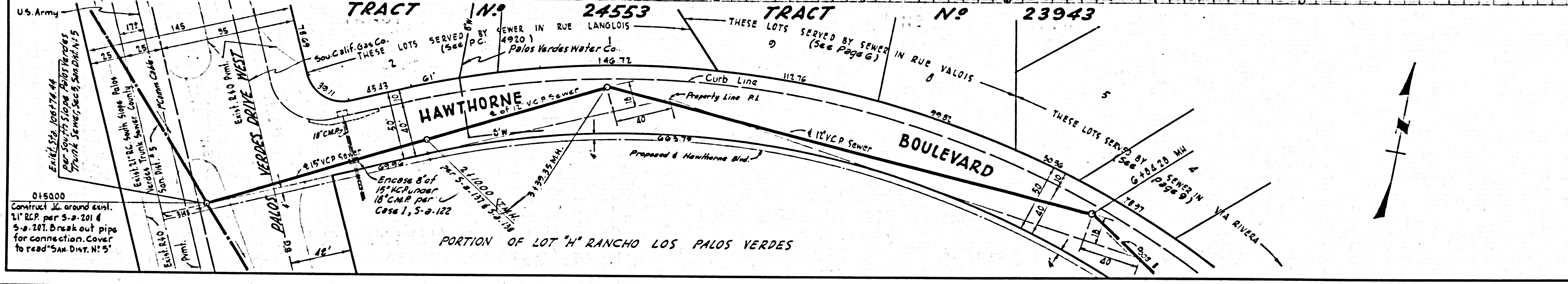


DOUBLE SCALE

NO CHARGE FOR CONNECTIONS



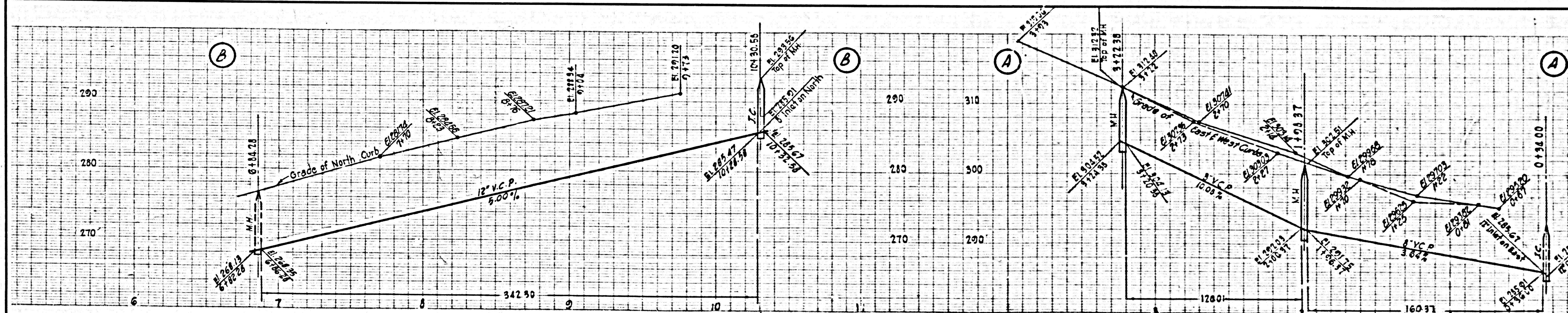
29,112



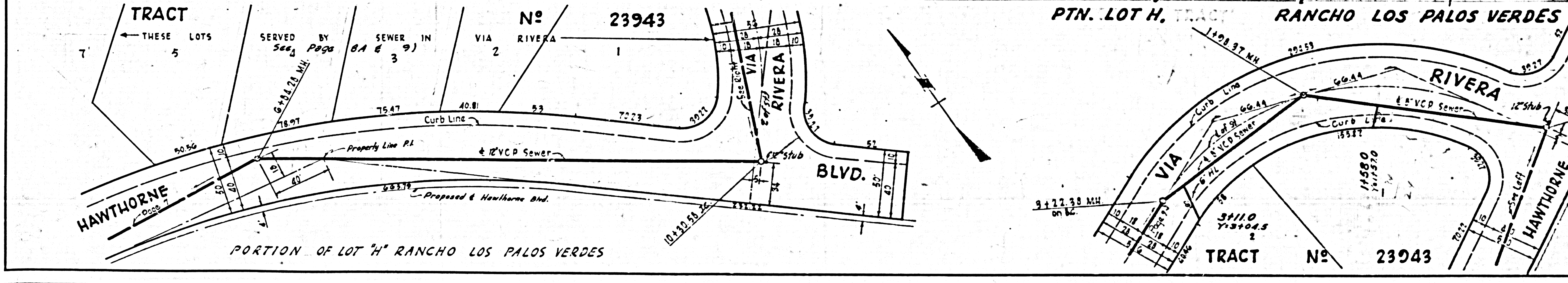
RS 12-3-58

DOUBLE SCALE

NO CHARGE FOR CONNECTIONS



29,113



RS 12-3-58



