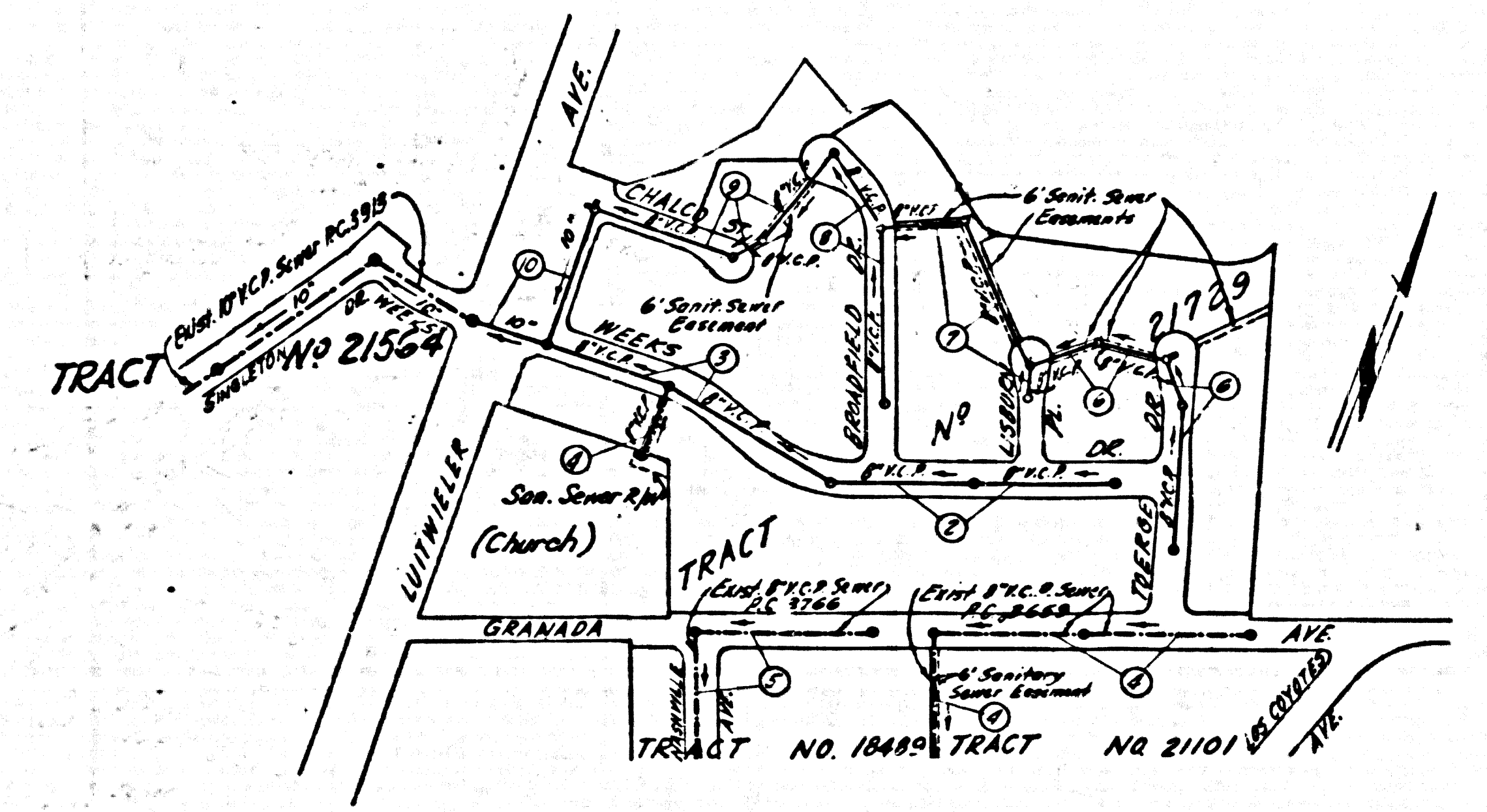


26210



INDEX MAP TRACT No. 21729 - SCALE: 1"=300'

B.M. 571136 Lead & Nail in Conc. Headwall 25' S. of Imperial Highway & @ 200' E. of Los Flores Ave. El. 172.671

- NOTE: Provide stakes on the property lines or property lines produced at right angles to the sewer line at the center line of each manhole. No representative of the County Engineer will survey or layout any portion of the work. The owner or his authorized representative shall furnish the County Engineer with grade sheets and stations for all house laterals and Y branches and shall provide stakes for them at their proper locations with stationing plainly marked. Any change in location shall be requested in writing by the owner or his representative. No revisions shall be made in these plans without the approval of the County Engineer. 1. Use standard manhole frames and covers, S-a-117. 2. Use standard strength pipe except as noted. 3. Use cement mortar or 'Wedge-Lock' or 'Speed-Seal' for all vitrified clay pipe joints per spec's. Sect. 36-448. 4. Resurface all trench within paved area to meet L.A. County Road Dept. or Calif. State Highway Dept. requirements in accordance with permit. 5. Encase four feet of sewer at points of interference with poles, S-a-119. 6. House laterals to be constructed with inverts at property line... feet below curb grade except as noted. 7. All structures shall be brick sewer structures, S-a-104. 8. For allowable leakage test, use Formula No. Spec's, Sec. 54. 9. Manhole tops in unimproved Rights-of-Way to be 6" above finish grade. 10. The private engineer is to furnish the house lateral depth at the property line below the top of curb elevation for each house lateral on the grade sheet. 11. (See Note at left.)

NOTE: THE CONTRACTOR SHALL NOTIFY THE CONSTRUCTION AND STORM DRAIN DIVISION BY TELEPHONE, MADISON 9-4747, EXT. 352, AT LEAST 24 HOURS BEFORE STARTING ANY WORK UNDER THIS CONTRACT.

NO CHARGE FOR CONNECTIONS 7.779 Revision 6-6-58

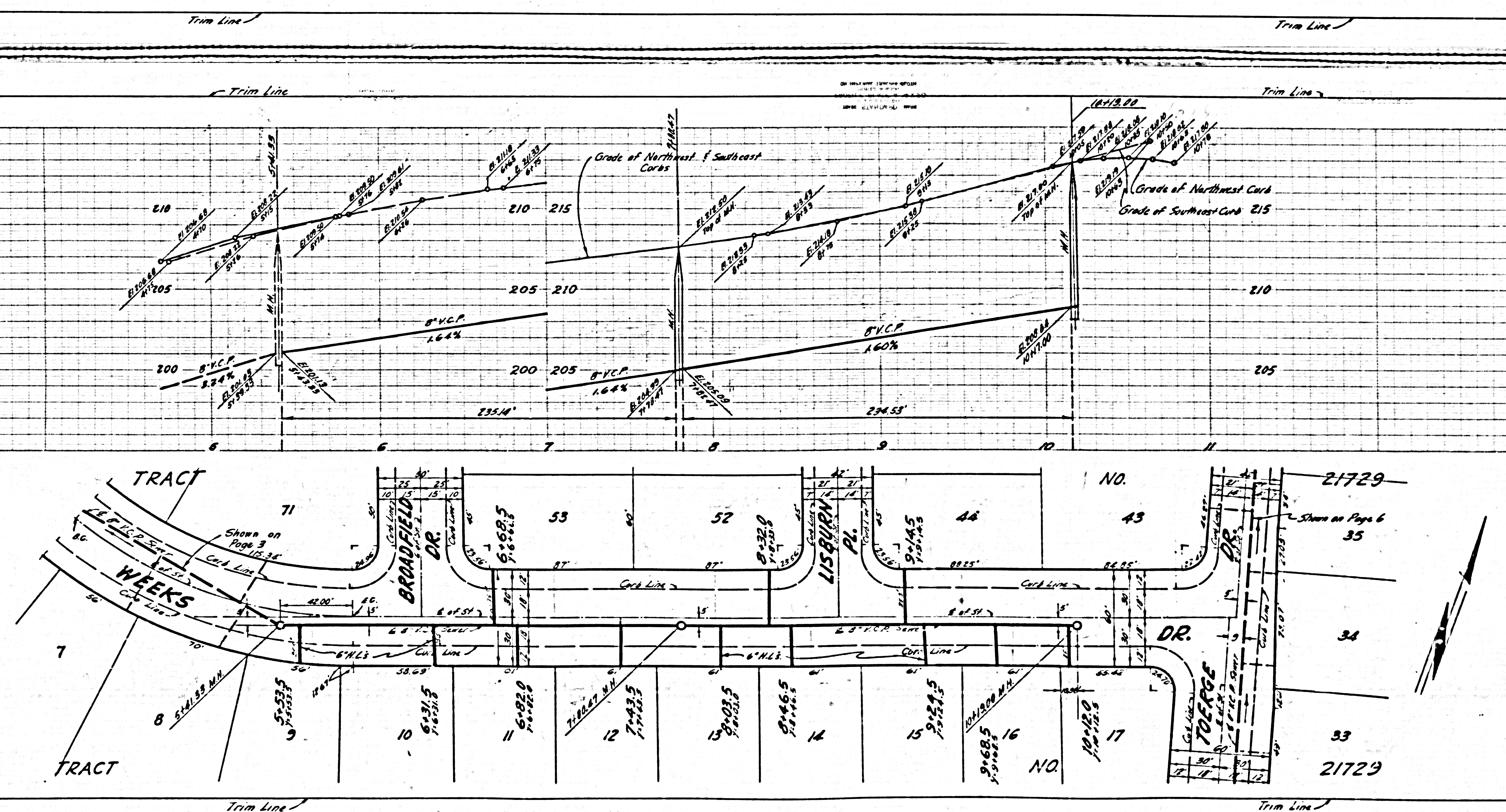
REVISIONS Page 8 - Revise grade a curb between J.C. & Dora & J.C. & Elmer St. Page 9 - Revise RL elevs of M.H.'s Page 10 - Revise RL elevs of grid M.N. & Dora and others accordingly APPROVED BY: [Signature] Office of County Engineer

NOTE: Grades to which this improvement is to be constructed are shown on plans and profiles. Grade points for top of curbs, center line of streets, or center line of alleys are shown by circles on profiles. At all points between designated points the grade shall be established so as to conform to a straight line drawn between said designated points. Elevations are in feet above U.S.C. & G.S. level datum of 1929. This drawing and the data hereon are hereby made a part of the specifications. Work shall be constructed according to specifications on file in the office of the County Engineer and shall be prosecuted only in the presence of the County Engineer. Before work can be started, the contractor must obtain a permit to excavate in County streets from the L.A. County Road Dept., Dist. #4, and make a deposit with the County Engineer, Rm. 324, 253 S. Broadway, sufficient to cover the cost of construction inspection and record plans. Approval of this plan by the County of Los Angeles does not constitute a representation as to the accuracy of the location of or the existence or non-existence of any underground utility, pipe, or structure within the limits of this project. This note applies to all sheets. If work is to be done in a State Highway, a permit must be obtained from the State of California, Division of Highways, 120 South Spring Street.

COUNTY OF LOS ANGELES, CALIFORNIA Approved, John A. Lambie, County Engineer Approved, A. M. Rown, Chief Clerk, Dist. No. 4

NOTES (cont.)

- 11. (a) No construction will be permitted in filled areas unless acceptable certification is submitted to the Construction Division of the County Engineer's Department that relative compaction is greater than 80%. (b) If compaction is less than 80%, the sewer must be cradled as shown on the plans per S-a-160. (c) If compaction is greater than 80%, neither cradling nor special manhole bases will be required. However, joint compound, 'Wedge-Lock' or 'Speed-Seal' must be substituted for cement mortar in filled areas.



PAGE 2 P.C. 4569

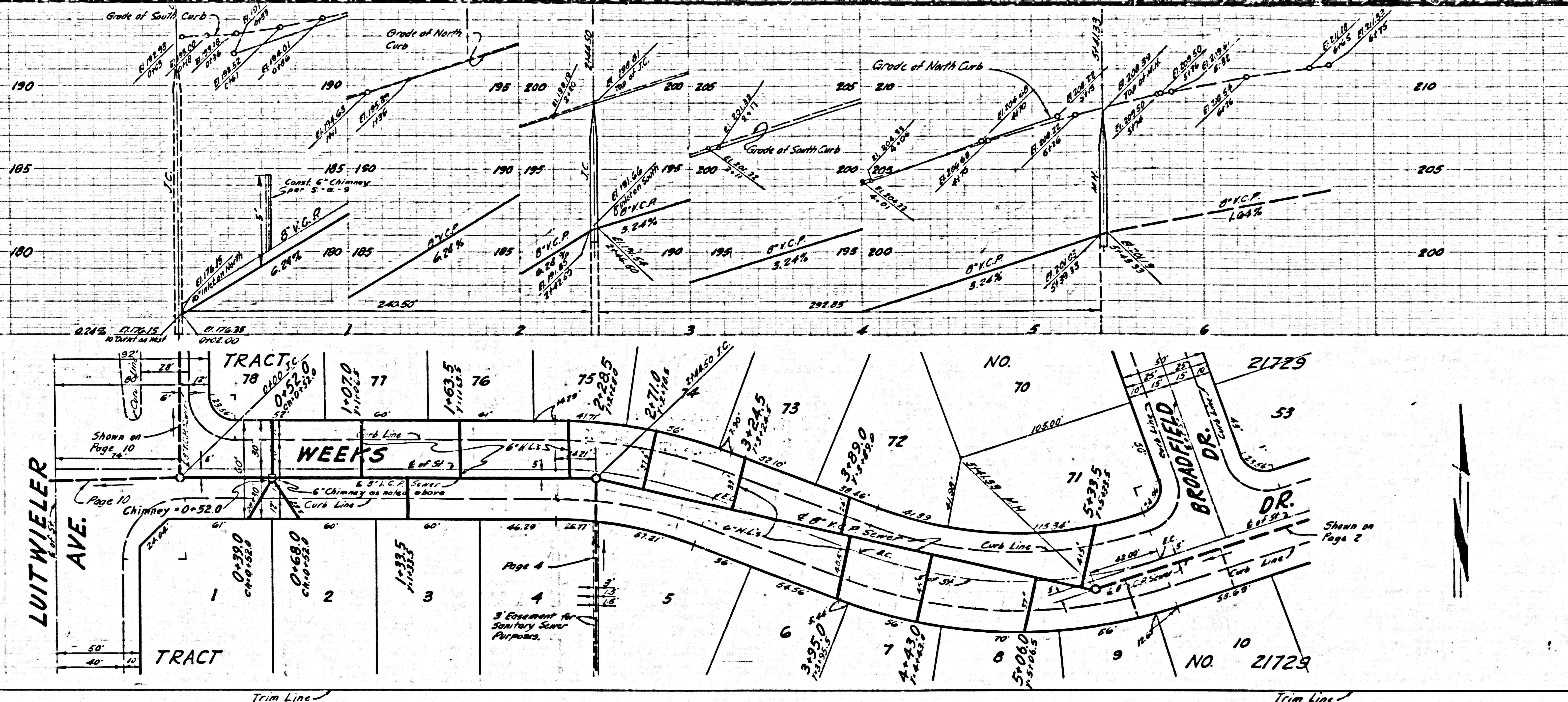
NO CHARGE FOR CONNECTIONS

26211

PC 4569 1

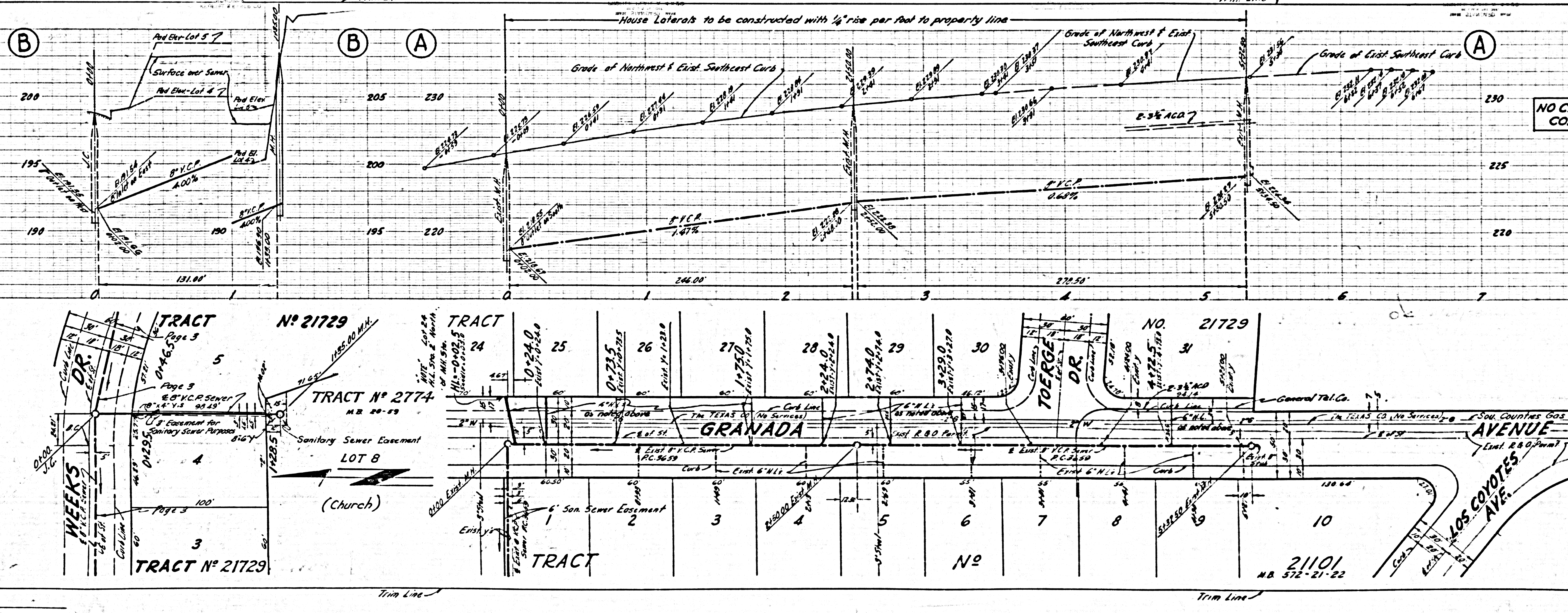
NO CHARGE FOR CONNECTIONS

26212



NO CHARGE FOR CONNECTIONS

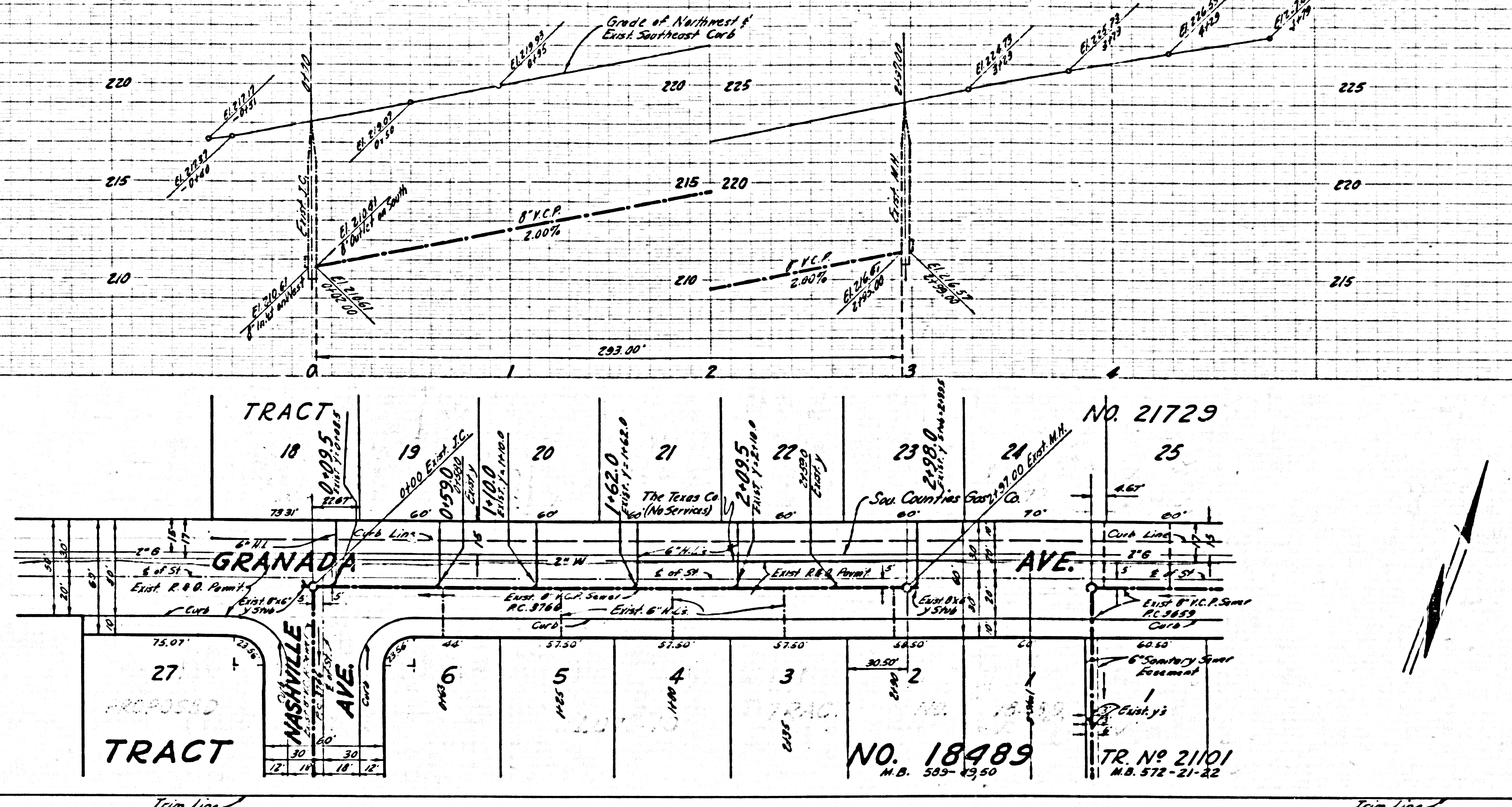
26213



PC 4269 (S)

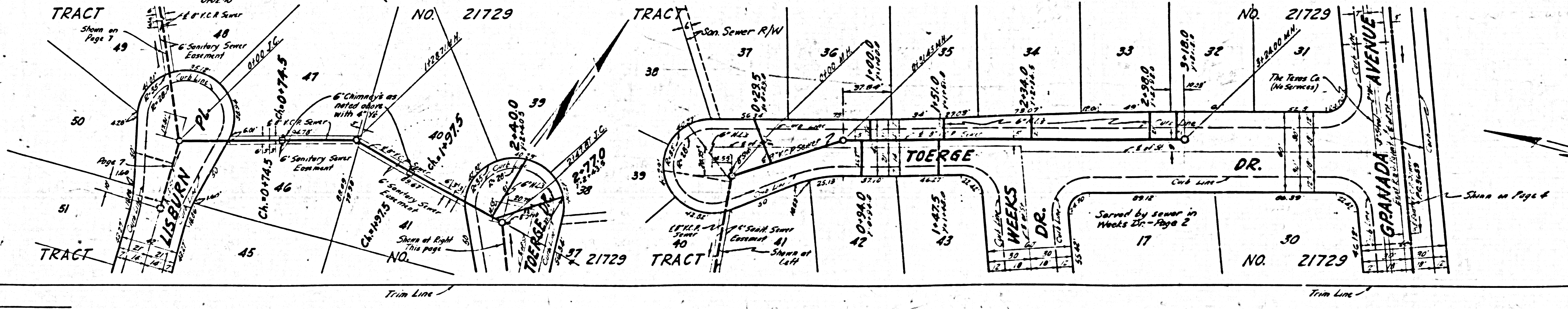
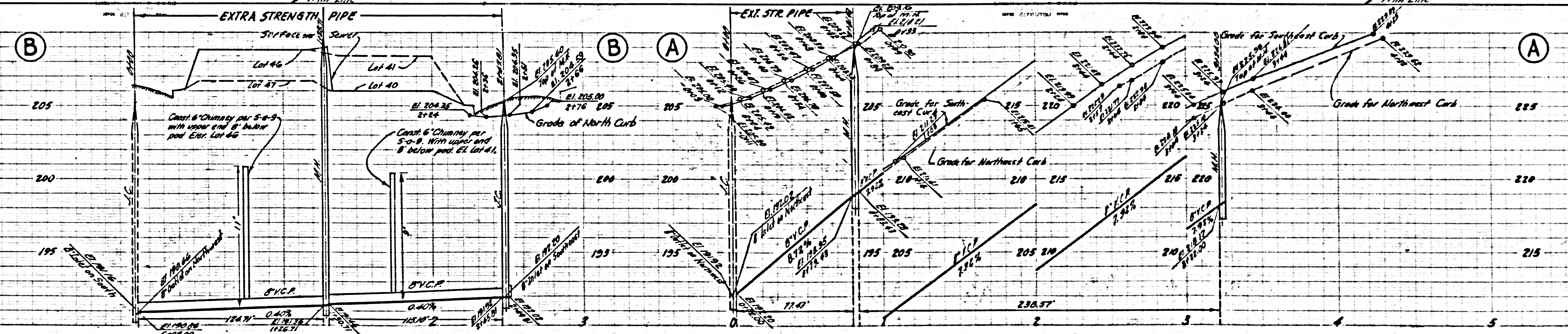
26214

NO CHARGE FOR CONNECTIONS

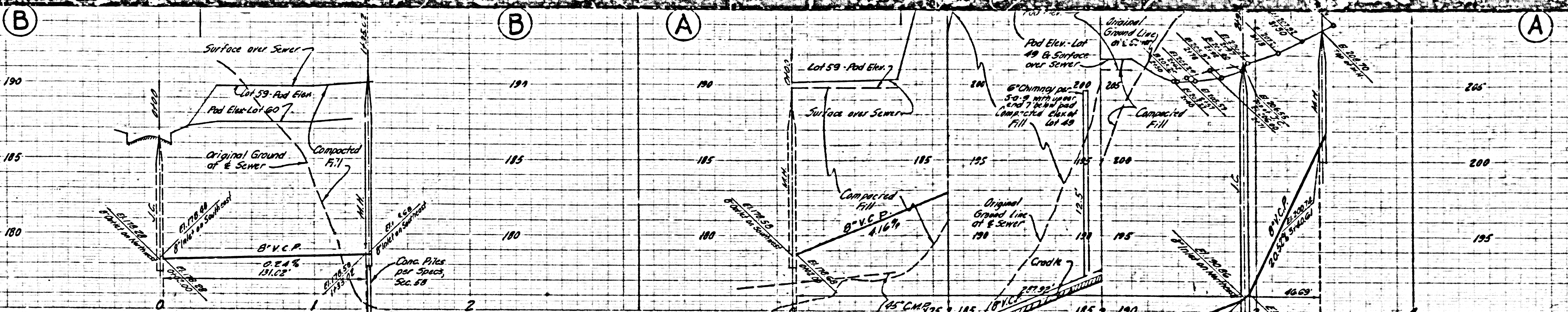


NO CHARGE FOR CONNECTIONS

26215

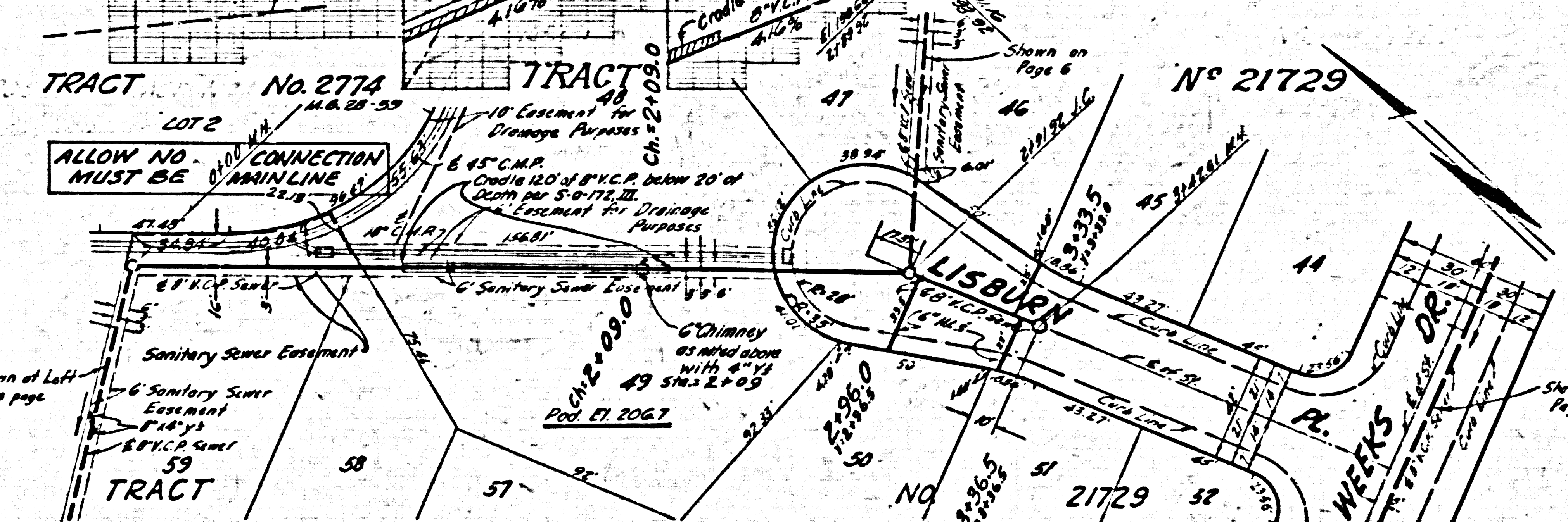
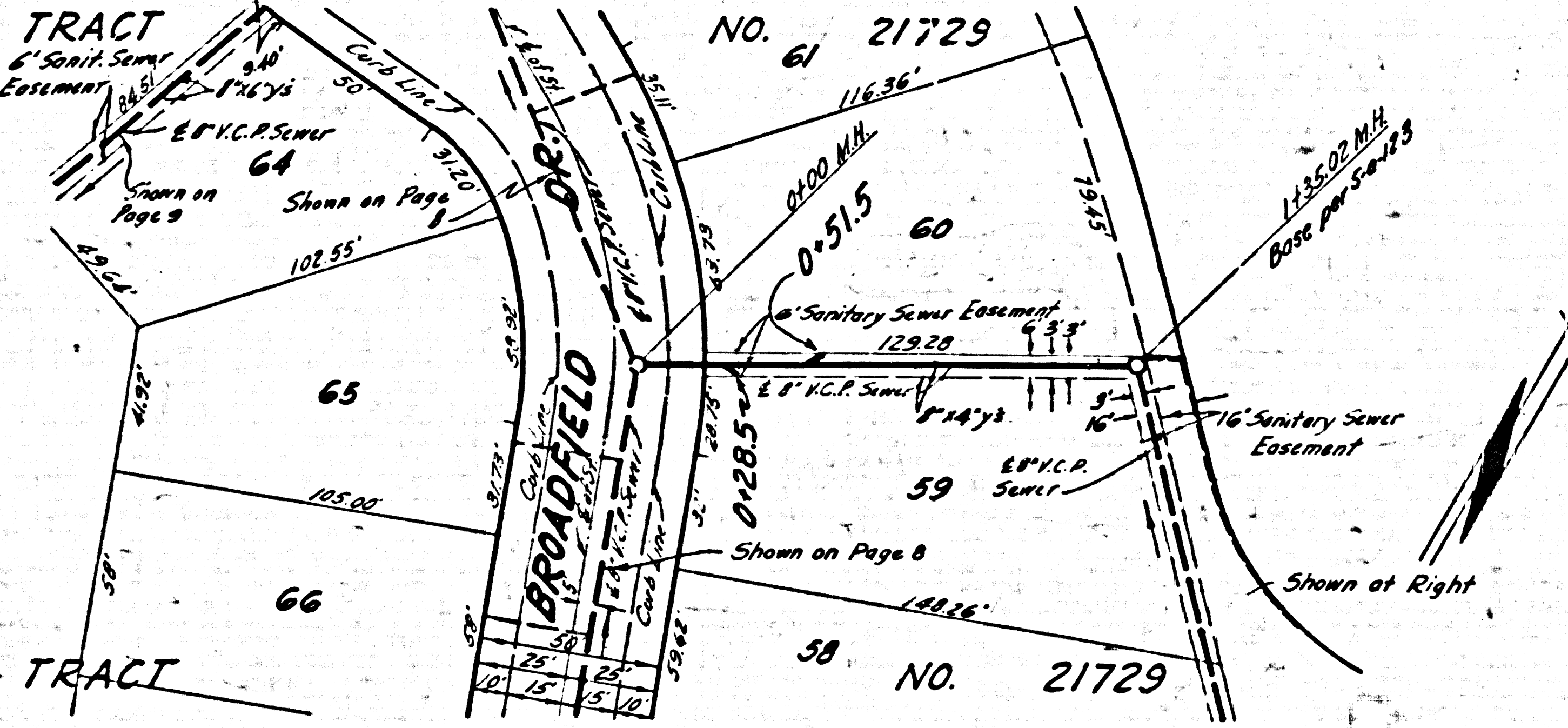


P.C. 4569 (3)



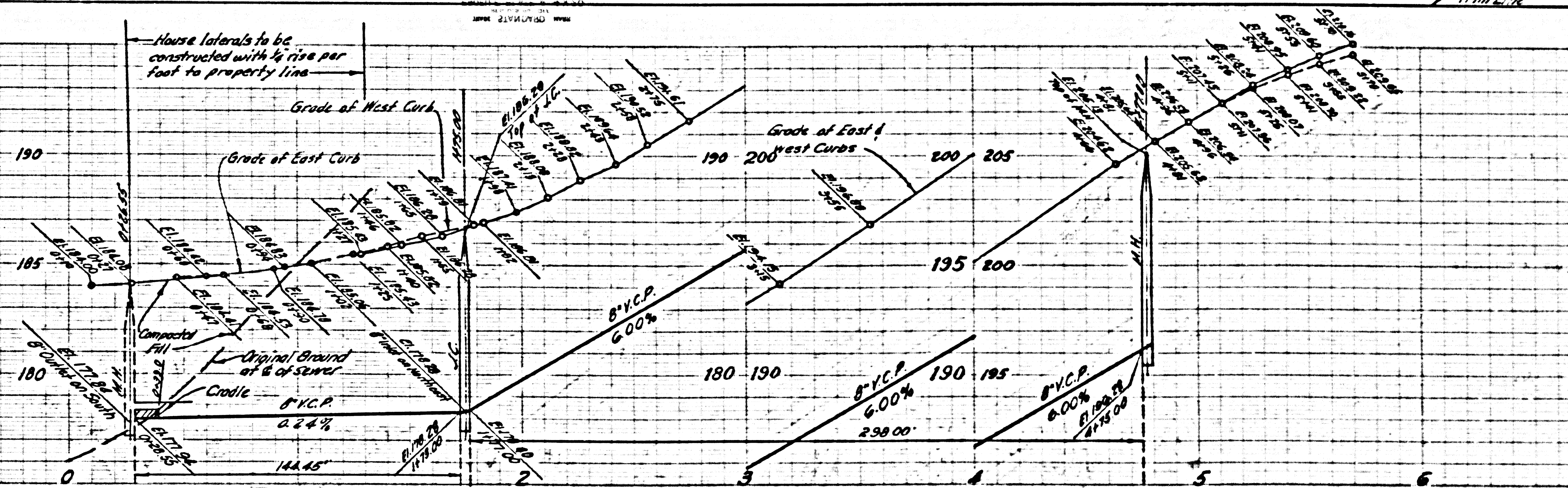
NO CHARGE FOR CONNECTIONS

26216



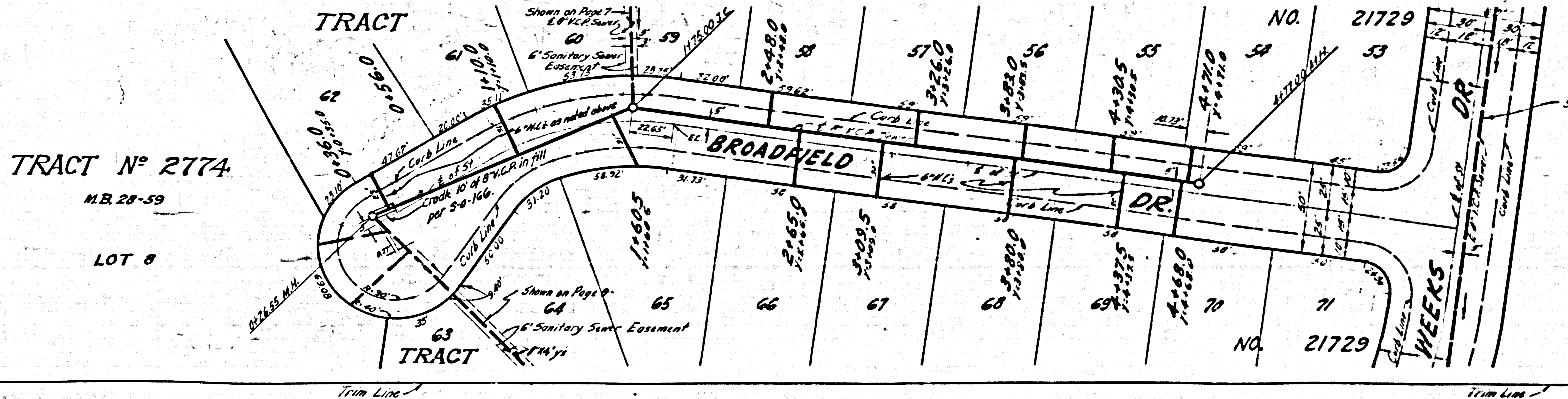
Trim Line

Trim Line



NO CHARGE FOR CONNECTIONS

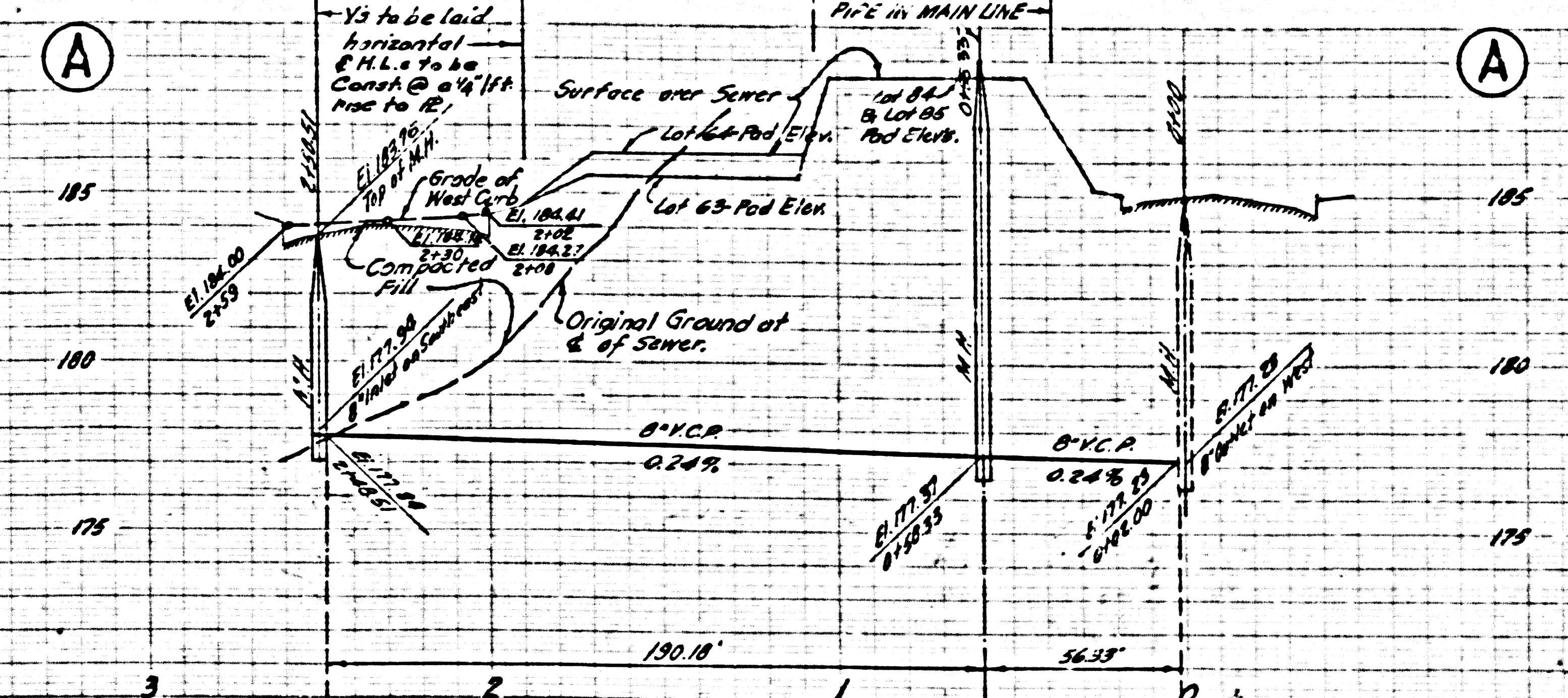
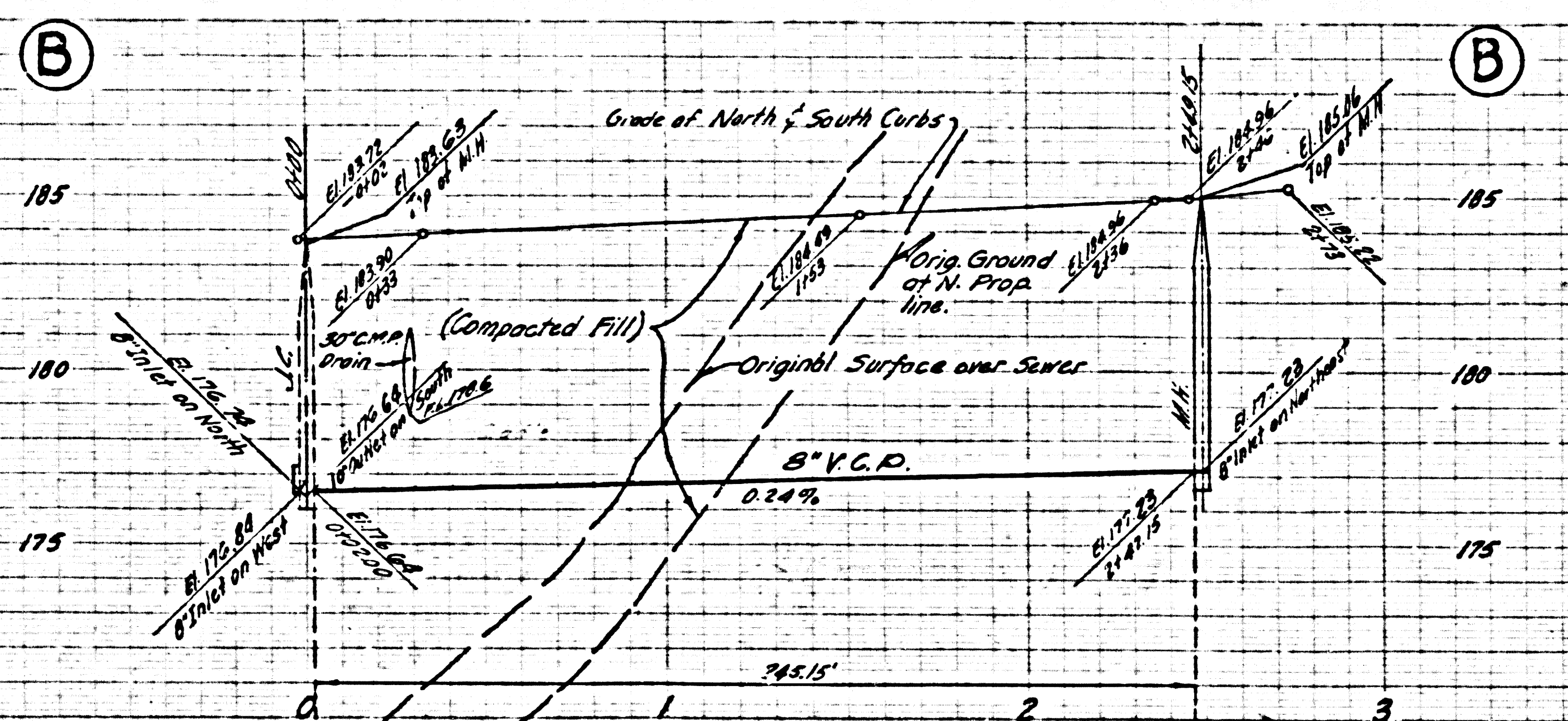
26217



Trim Line

Trim Line

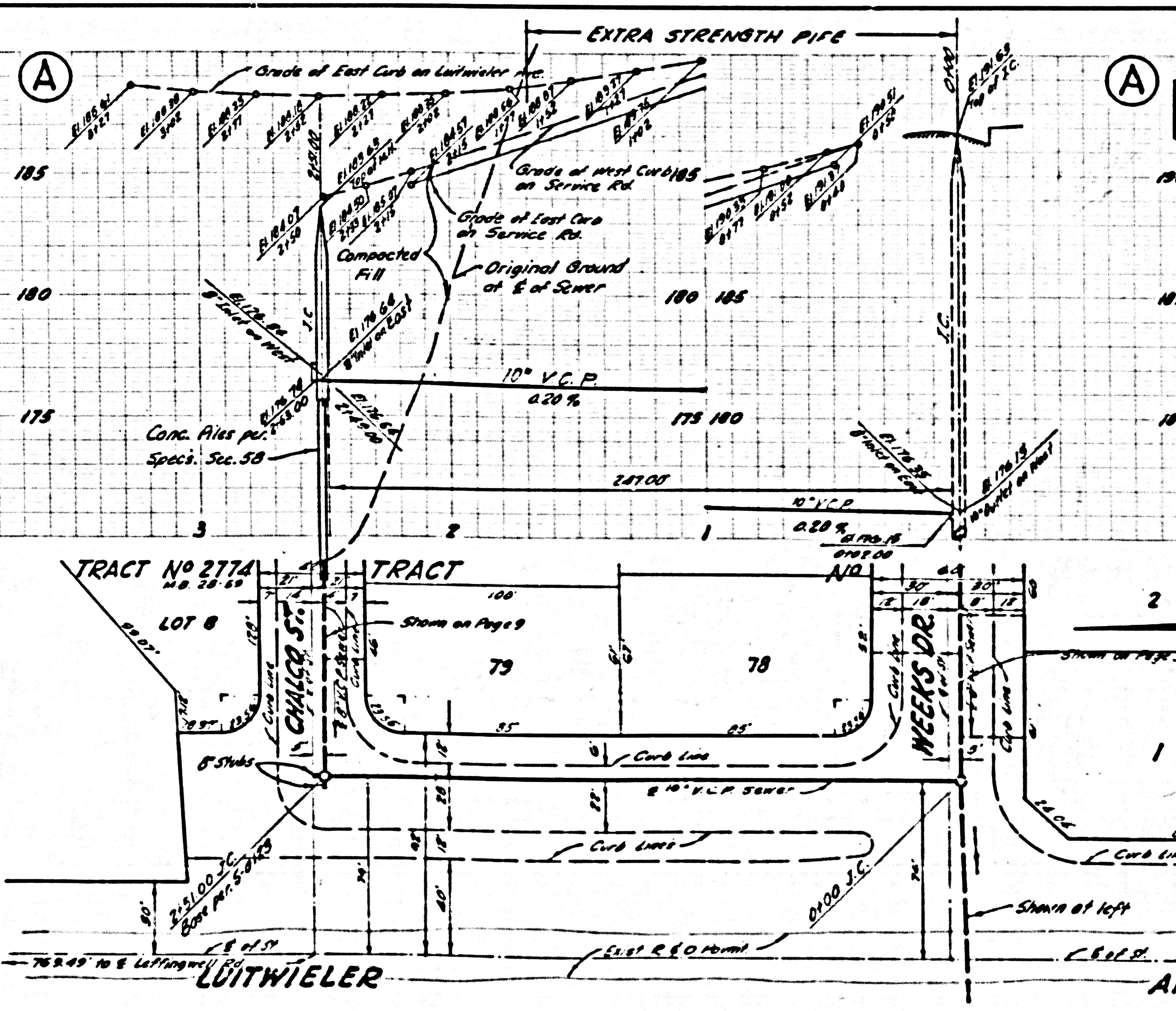
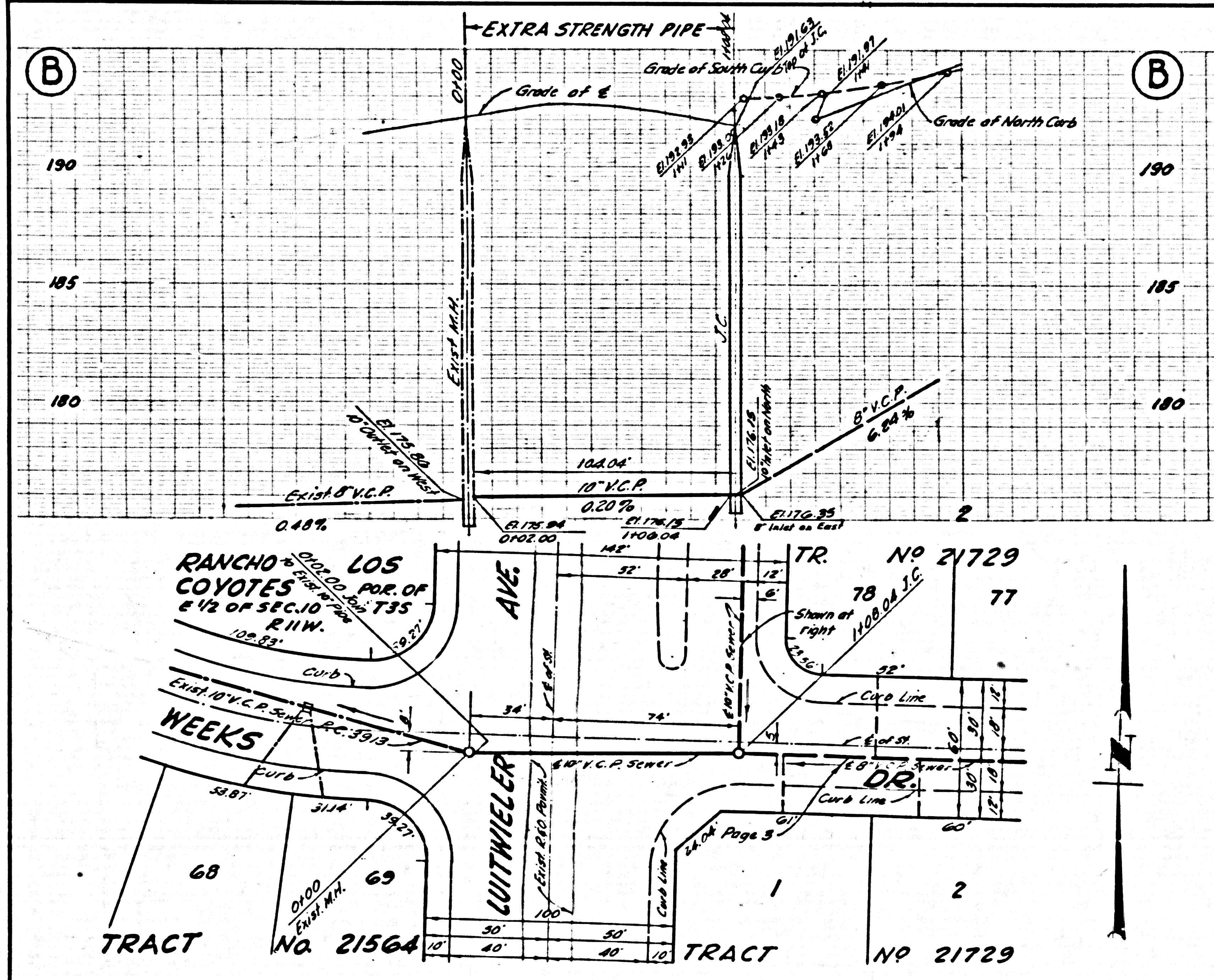
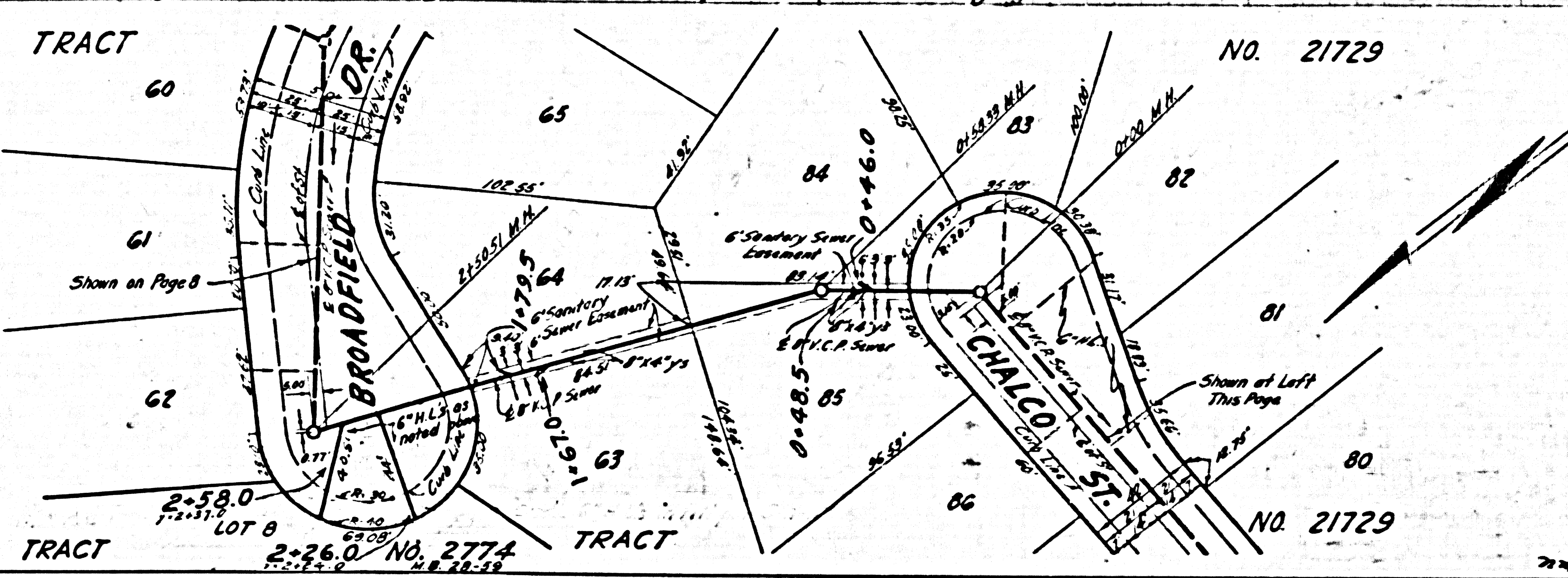
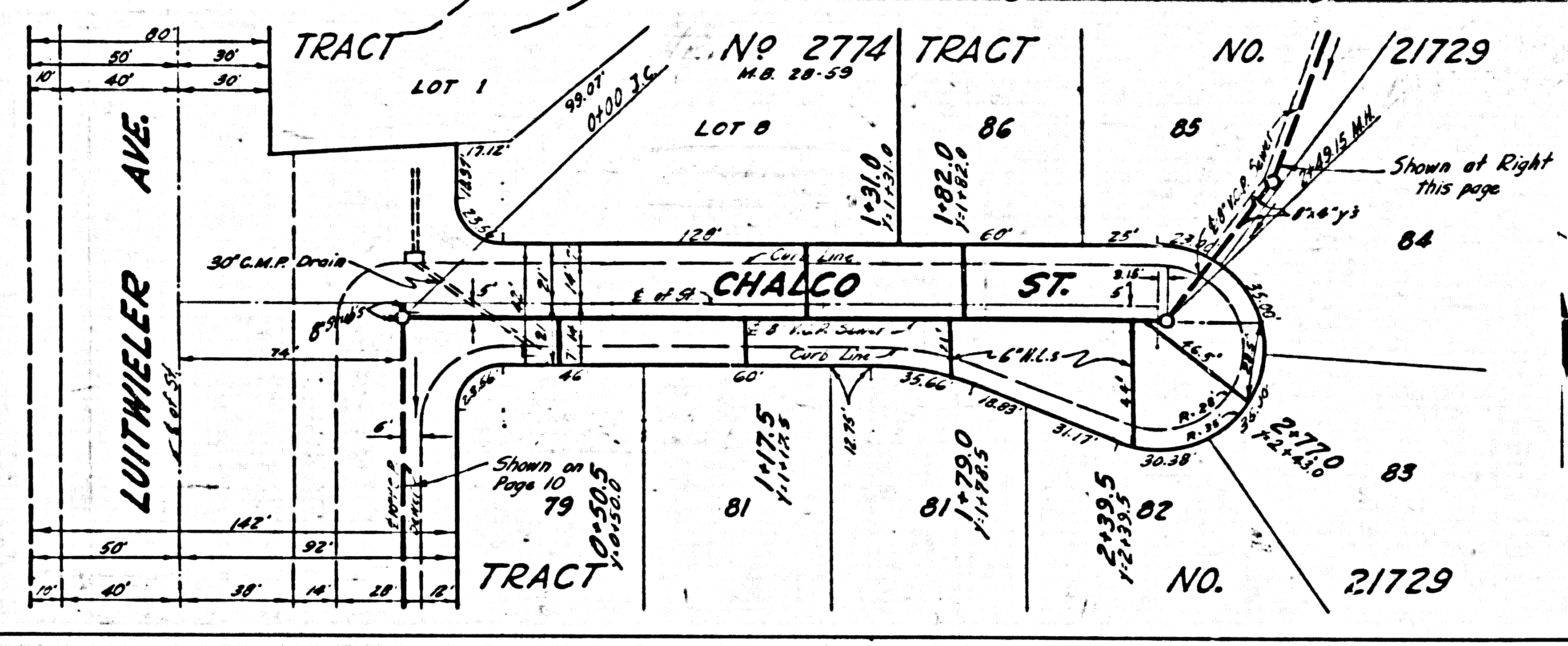
72, 6-58



PAGE 9
PC. 4569

NO CHARGE FOR
CONNECTIONS

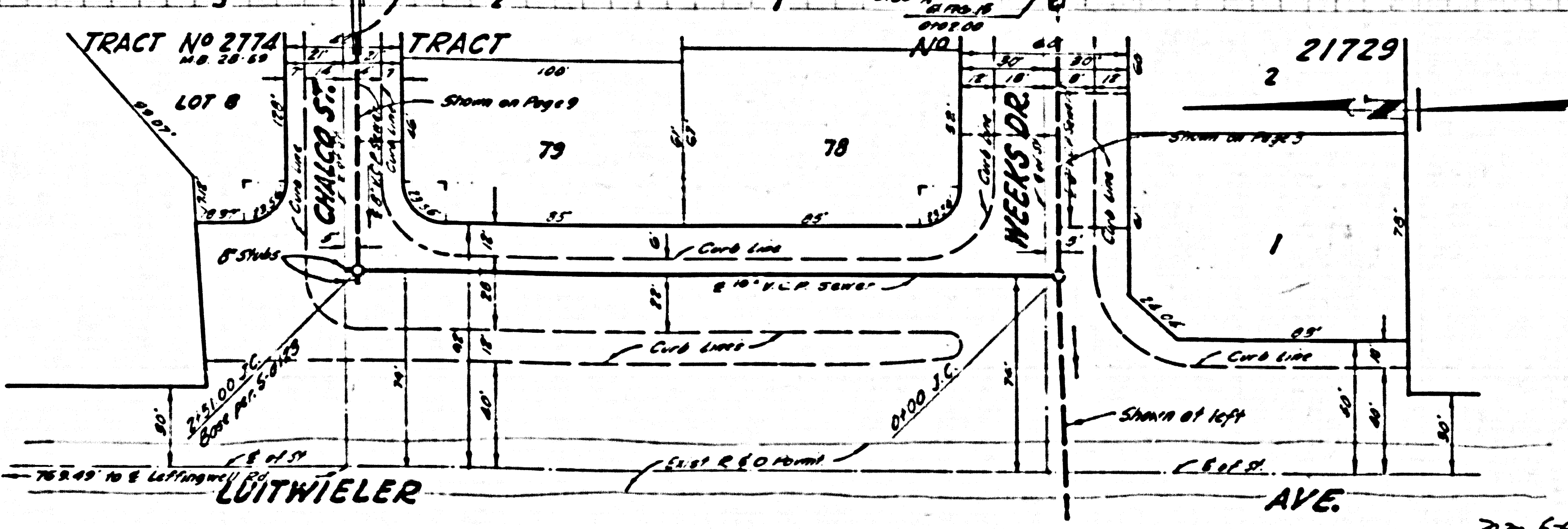
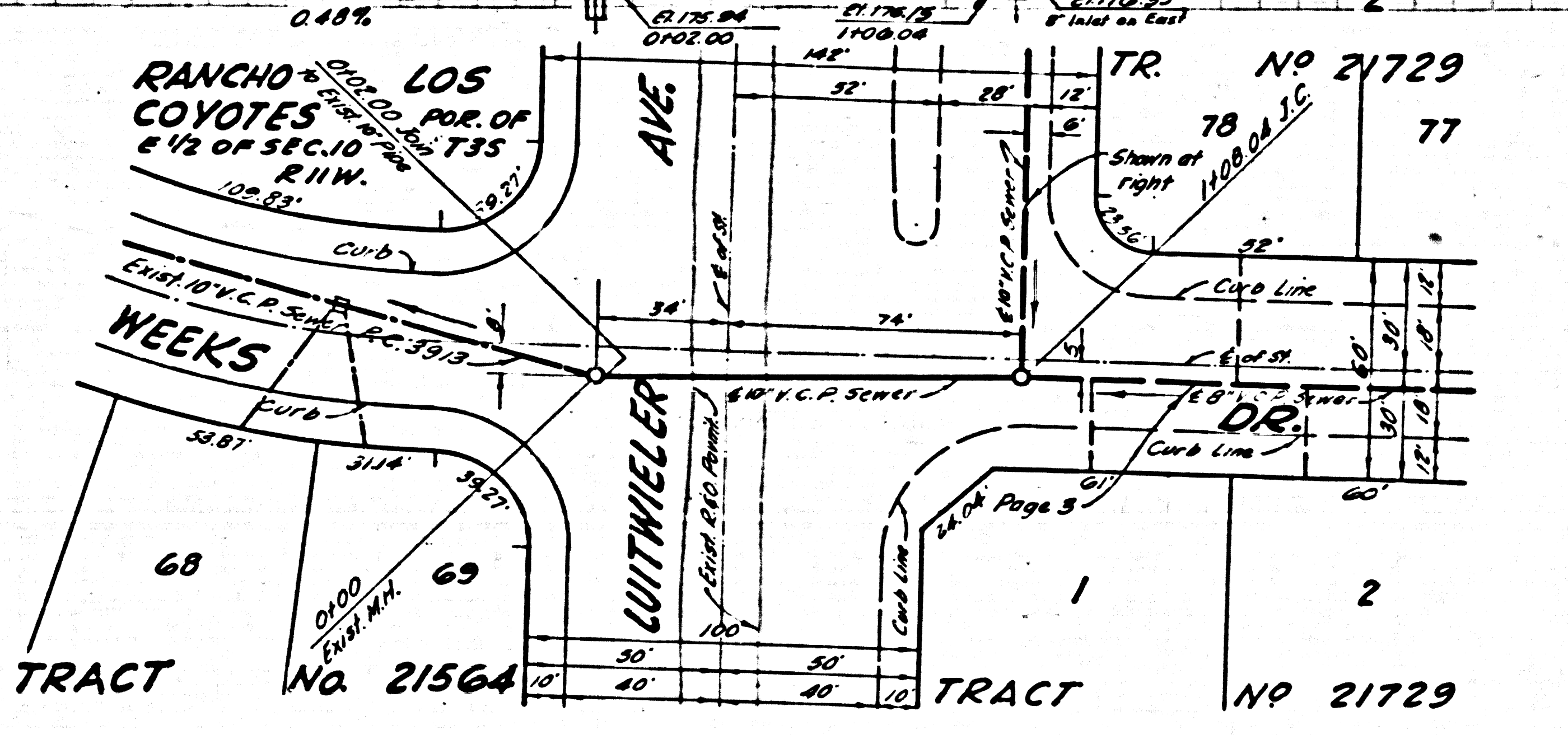
26218



PC. 4569 PAGE 10

NO CHARGE FOR
CONNECTIONS

26219



PC. 4209