

PUEENTE BLDG. DIST. NO. 2

PROFILE ALIGNMENT AND GRADE OF P.C. 4572
SANITARY SEWERS PAGE 1

TO BE CONSTRUCTED IN

TRACT No 23980
PRIVATE CONTRACT NO. 4572

W.S. 46
2 SHEETS, 3 PAGES

SCALE: VERT. 1" = 4' SEPTEMBER, 1957
PREPARED IN THE OFFICES OF
ADAMS & ELLS - ENGINEERS

BY: *John R. Alving*
REG. C. E. NO. 1239

FOR LEGEND SEE PLAN NO. S-A-64

26,284

BENCH MARK S.G. 388
Los Angeles County Surveyor Monument & Intersection
of Francisquito Avenue & Orange Avenue.
Elev. = 338.794

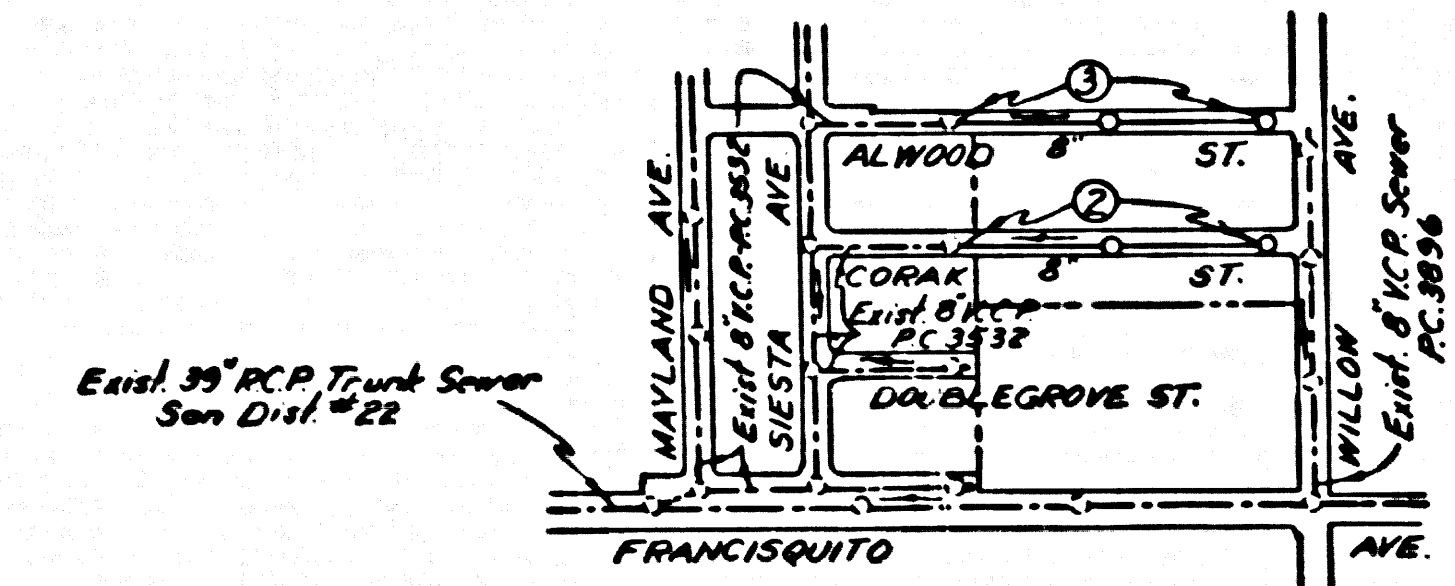
- NOTES:
- PROVIDE STAKES ON THE PROPERTY LINE OR PROPERTY LINES PRODUCED AT RIGHT ANGLES TO THE SEWER LINE AT THE CENTER LINE OF EACH MANHOLE.
 - NO REPRESENTATIVE OF THE COUNTY ENGINEER WILL SURVEY OR LAYOUT ANY PORTION OF THE WORK.
 - THE OWNER OR HIS AUTHORIZED REPRESENTATIVE SHALL FURNISH THE COUNTY ENGINEER WITH GRADE SHEETS AND STATIONING FOR ALL HOUSE LATERALS AND TRENCHES AND SHALL PROVIDE STAKES FOR THEM AT THEIR PROPER LOCATIONS WITH STATIONING PLAINLY MARKED. ANY CHANGE IN LOCATION SHALL BE REQUESTED IN WRITING BY THE OWNER OR HIS REPRESENTATIVE.
 - NO REVISIONS SHALL BE MADE IN THESE PLANS WITHOUT THE APPROVAL OF THE COUNTY ENGINEER.
 - USE STANDARD MANHOLE FRAMES AND COVERS, S-A-117.
 - USE STANDARD STRENGTH PIPE.
 - USE CEMENT MORTAR OR "SPEED-SEAL" OR "WEDGE-LOCK" FOR ALL K.C.P. JOINTS PER SPECS., SECS. 34 & 48.
 - RESURFACE ALL TRENCH WITHIN PAVED AREA TO MEET L. A. COUNTY ROAD DEPT. OR CALIF. STATE HIGHWAY DEPT. REQUIREMENTS IN ACCORDANCE WITH PERMITS.
 - ENCASE FOUR FEET OF SEWER AT POINTS OF INTERFERENCE WITH POLES, CASE III, S-A-172.
 - HOUSE LATERALS TO BE CONSTRUCTED WITH 1/2" RISE PER FT. TO PROPERTY LINE.
 - ALL STRUCTURES SHALL BE BUILT BY STRUCTURES, S-A-194.
 - FOR ALLOWABLE LEAKAGE TEST USE FORMULA NO. _____ SPEC. SEC. 54.
 - MANHOLE TOPS ON UNIMPROVED RIGHTS-OF-WAY TO BE 18" ABOVE FINISH GRADE.
 - THE PRIVATE ENGINEER SHALL FURNISH THE HOUSE LATERAL DEPTH AT THE PROPERTY LINE BELOW TOP OF CURB ELEVATION FOR EACH HOUSE LATERAL ON THE GRADE SHEET.

NOTE: THE CONTRACTOR SHALL NOTIFY THE CONSTRUCTION AND STORM DRAIN DIVISION BY TELEPHONE, M.A. 94747, EXT. 362, AT LEAST 24 HRS. BEFORE STARTING ANY WORK UNDER THIS CONTRACT.

NOTES:
GRADES TO WHICH THIS IMPROVEMENT IS TO BE CONSTRUCTED ARE SHOWN ON PLANS AND PROFILES. GRADE POINTS FOR TOP OF CURB, CENTER LINE OF STREET, OR CENTER LINE OF ALLEYS ARE SHOWN BY CIRCLES ON PROFILES. AT ALL POINTS BETWEEN DESIGNATED POINTS THE GRADE SHALL BE ESTABLISHED SO AS TO CONFORM TO A STRAIGHT LINE DRAWN BETWEEN SAID DESIGNATED POINTS.
ELEVATIONS ARE IN FEET ABOVE U.S.C. (U.S. SEA LEVEL DATUM OF 1929).
THIS DRAWING AND THE DATA HEREON ARE HEREBY MADE A PART OF THE SPECIFICATIONS.
WORK SHALL BE CONSTRUCTED ACCORDING TO SPECIFICATIONS ON FILE IN THE OFFICE OF THE COUNTY ENGINEER AND SHALL BE PROSECUTED ONLY IN THE PRESENCE OF THE COUNTY ENGINEER.
BEFORE WORK CAN BE STARTED, THE CONTRACTOR MUST OBTAIN A PERMIT TO EXCAVATE IN COUNTY STREETS FROM THE L. A. COUNTY ROAD DEPT., DIST. NO. 1, AND MAKE A DEPOSIT WITH THE COUNTY ENGINEER, ROOM 354 MAIN AMERICAN BUILDING, 333 SO. BROADWAY SUFFICIENT TO COVER THE COST OF CONSTRUCTION INSPECTION AND RECORD PLANS.
APPROVAL OF THIS PLAN BY THE COUNTY OF LOS ANGELES DOES NOT CONSTITUTE A REPRESENTATION AS TO THE ACCURACY OF THE LOCATION OF OR THE EXISTENCE OR NON-EXISTENCE OF ANY UNDERGROUND UTILITY PIPE, OR STRUCTURE WITHIN THE LIMITS OF THIS PROJECT. THIS NOTE APPLIES TO ALL PAGES.
IF WORK IS TO BE DONE IN A STATE HIGHWAY, A PERMIT MUST BE OBTAINED FROM THE STATE OF CALIFORNIA, DIVISION OF HIGHWAYS, 120 SOUTH SHAW ST.

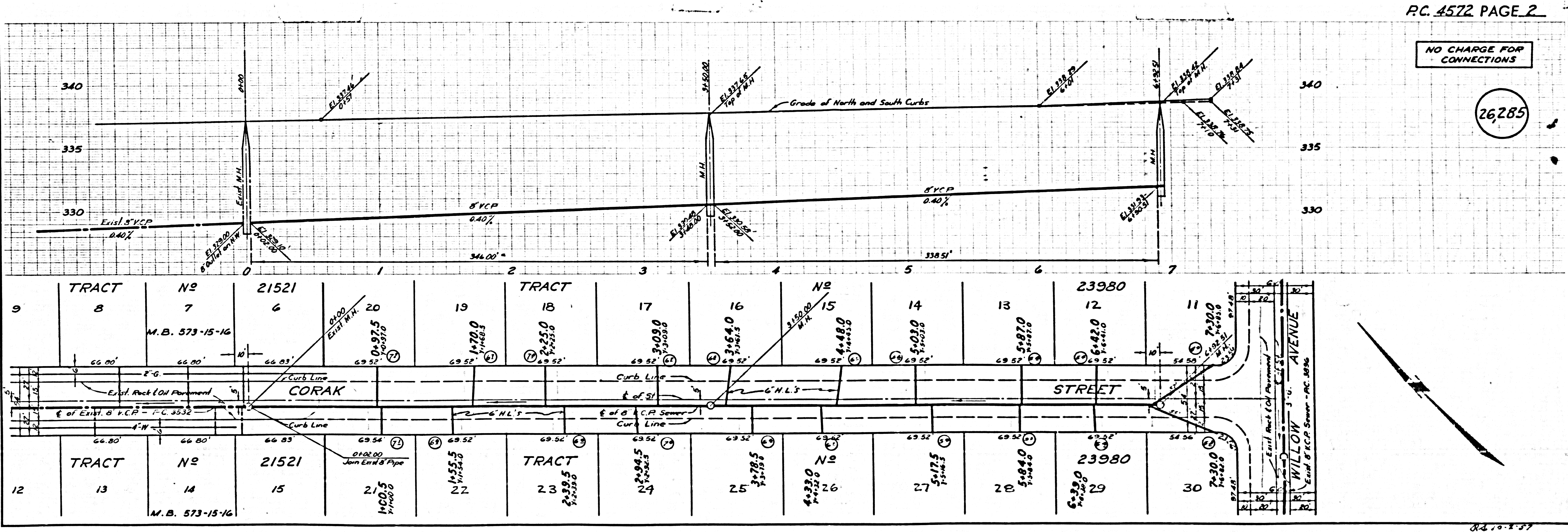
COUNTY OF LOS ANGELES, CALIFORNIA

APPROVED, JOHN A. LAMBE, COUNTY ENGINEER
APPROVED, A. M. RAWN, CHIEF ENGINEER
BY: *John R. Alving* SANITATION ENGINEER
BY: *W. J. ...* OFFICE ENGINEER
CHECKED BY: *W. J. ...*
OFFICE OF COUNTY ENGINEER, REG. C. E. NO. 2166



INDEX MAP
SCALE 1" = 600'
TRACT No 23980
P.C. 4572

NO CHARGE FOR CONNECTIONS
W. J. ...



P.C. 4572 PAGE 2

NO CHARGE FOR CONNECTIONS

26,285

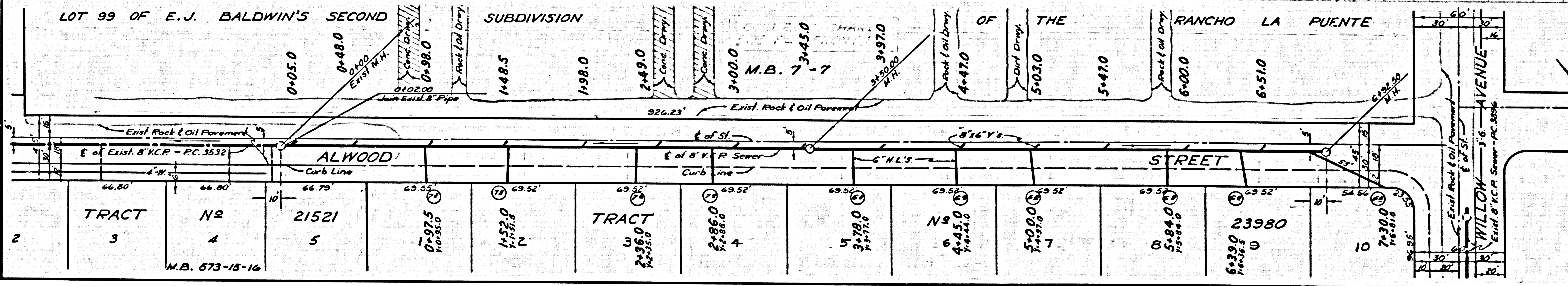
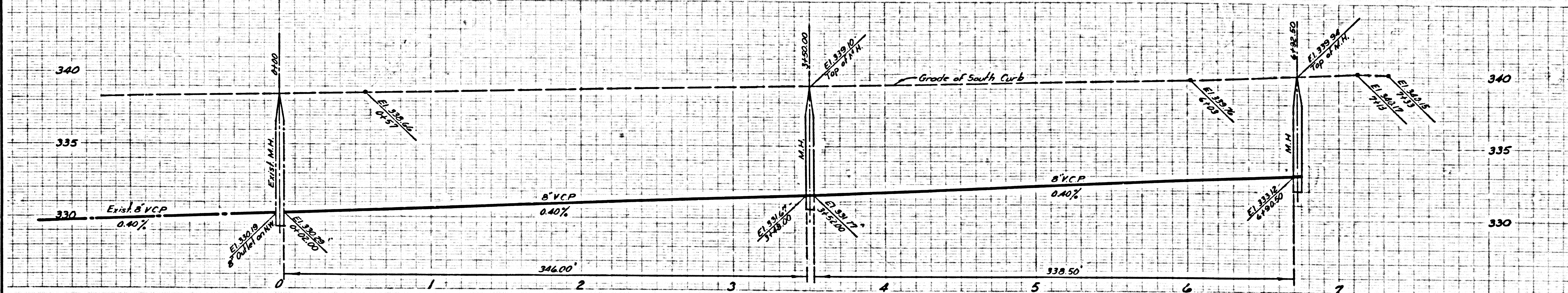
P.C. 4572

TRACT No 23980

9.2.10.5.57

NO CHARGE FOR CONNECTIONS

26286



LOT 99 OF E.J. BALDWIN'S SECOND SUBDIVISION OF THE RANCHO LA PUENTE

TRACT NO 21521, 21522, 21523, 21524, 21525, 21526, 21527, 21528, 21529, 21530, 21531, 21532, 21533, 21534, 21535, 21536, 21537, 21538, 21539, 21540

PAGE

PC 4572

TRACT No 21521

U.S.G. 200 00 GAL. BLUE PRINT SHEET NO. 1