

LOMITA BLDG. DIST. NO. 7.I

PROFILE ALIGNMENT AND GRADE OF P.C.4575
SANITARY SEWERS PAGE 1
 TO BE CONSTRUCTED IN

A SANITARY SEWER RIGHT OF WAY WEST OF KINARD AVENUE

PRIVATE CONTRACT NO. 4575

W.S. 28
 1 SHEET ; 2 PAGES

25,613

SCALE: VERT. 1" = 4'
 HORIZ. 1" = 40'
 PREPARED IN THE OFFICES OF
BARCLAY ENGINEERING CO., INC.

By: *Edward L. Barclay*
 REG. C. E. NO. 2768
 FOR LEGEND SEE PLAN NO. S-A-64

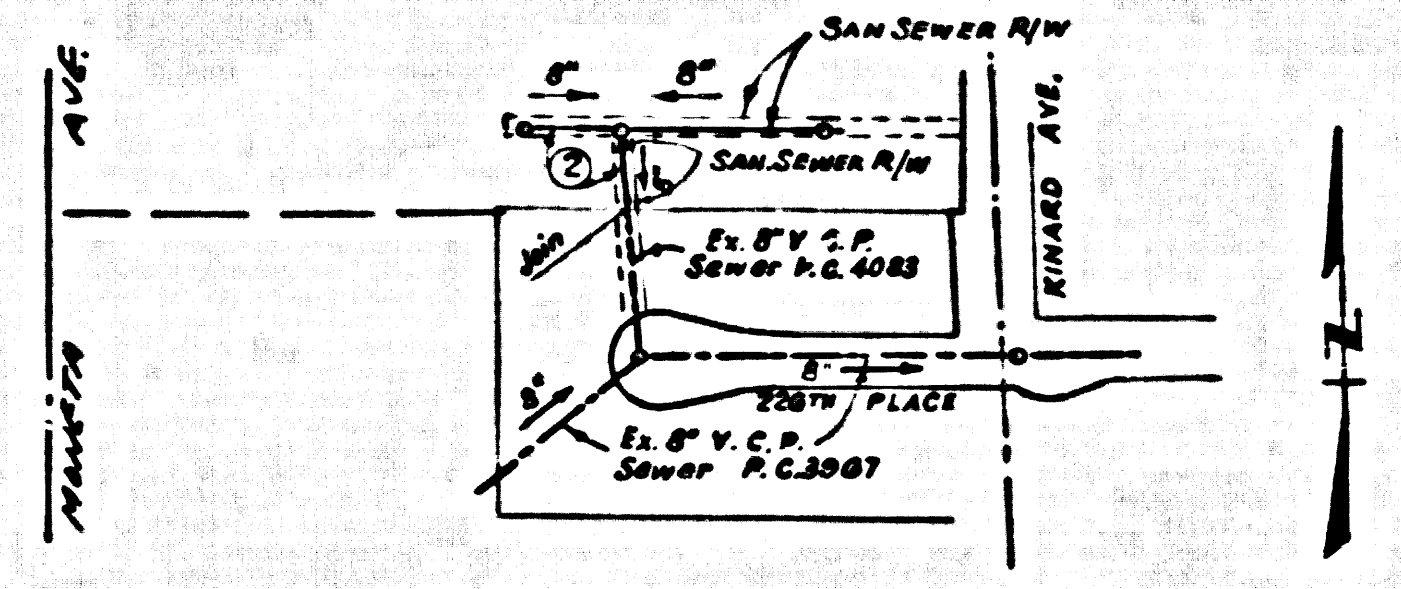
NOTE:
 GRADES TO WHICH THIS IMPROVEMENT IS TO BE CONSTRUCTED ARE SHOWN ON PLANS AND PROFILES. GRADE POINTS FOR TOP OF CURBS, CENTER LINE OF STREETS, OR CENTER LINE OF ALLEYS ARE SHOWN BY CIRCLES ON PROFILES. AT ALL POINTS BETWEEN DESIGNATED POINTS THE GRADE SHALL BE ESTABLISHED SO AS TO CONFORM TO A STRAIGHT LINE DRAWN BETWEEN SAID DESIGNATED POINTS.
 ELEVATIONS ARE IN FEET ABOVE U.S.C. & G.S. SEA LEVEL DATUM OF 1929.
 THIS DRAWING AND THE DATA HEREON ARE HEREBY MADE A PART OF THE SPECIFICATION.
 WORK SHALL BE CONSTRUCTED ACCORDING TO SPECIFICATIONS ON FILE IN THE OFFICE OF THE COUNTY ENGINEER AND SHALL BE PROSECUTED ONLY IN THE PRESENCE OF THE COUNTY ENGINEER.
 BEFORE WORK CAN BE STARTED THE CONTRACTOR MUST OBTAIN A PERMIT TO EXCAVATE IN COUNTY STREETS FROM THE L. A. COUNTY ROAD DEPT., 108 W. 3RD ST. AND MAKE A DEPOSIT WITH THE COUNTY ENGINEER, ROOM 324 PAN AMERICAN BUILDING, 212 SO. BROADWAY STARTING TO COVER THE COST OF CONSTRUCTION INSPECTION AND RECORD PLANS.
 APPROVAL OF THIS PLAN BY THE COUNTY OF LOS ANGELES DOES NOT CONSTITUTE A REPRESENTATION AS TO THE ACCURACY OF THE LOCATION OR OF THE EXISTENCE OR NON-EXISTENCE OF ANY UNDERGROUND UTILITY PIPE, OR STRUCTURE WITHIN THE LIMITS OF THIS PROJECT. THE NOTE APPLIES TO ALL PAGES.
 IF WORK IS TO BE DONE IN A STATE HIGHWAY, A PERMIT MUST BE OBTAINED FROM THE STATE OF CALIFORNIA, DIVISION OF HIGHWAYS, 120 SOUTH BRIDGE STREET.

COUNTY OF LOS ANGELES, CALIFORNIA

APPROVED, JOHN A. LAMBE, COUNTY ENGINEER
 APPROVED, A. M. RAWIN, CHIEF ENGINEER
 BY: *E. L. Hughes* SANITATION ENGINEER
 BY: *A. M. Rawin* OFFICE ENGINEER
 CHECKED BY: *SK Onda* 1-20-58
 OFFICE OF COUNTY ENGINEER, REG. C. E. NO. 7406

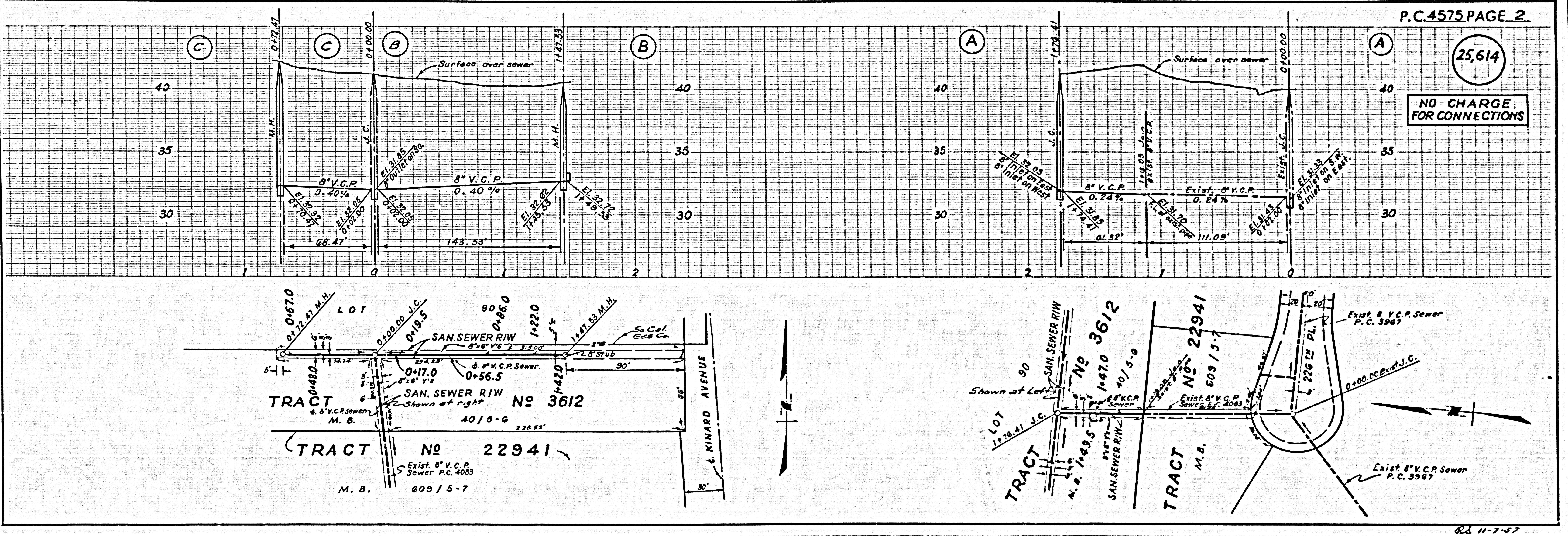
B.M.S.Y. 3926 El. 35.678 L&T.
 in Conc. Pym't. ± 19' W. &
 Int. Main St. & 223rd St.

NO CHARGE
 FOR CONNECTIONS
Lomita 1-22-58



INDEX MAP
 SCALE 1" = 200'
 P. C. 4575

- NOTES:
- PROVIDE STAKES ON THE PROPERTY LINE OR PROPERTY LINES PRODUCED AT RIGHT ANGLES TO THE SEWER LINE AT THE CENTER LINE OF EACH MANHOLE.
 - NO REPRESENTATIVE OF THE COUNTY ENGINEER WILL SURVEY OR LAYOUT ANY PORTION OF THE WORK.
 - THE OWNER OR HIS AUTHORIZED REPRESENTATIVE SHALL FURNISH THE COUNTY ENGINEER WITH GRADE SHEETS AND STATION FOR ALL HOUSE LATERALS AND Y BRANCHES AND SHALL PROVIDE STAKES FOR THEM AT THEIR PROPER LOCATIONS WITH STATIONING PLAINLY MARKED. ANY CHANGE IN LOCATION SHALL BE REQUESTED IN WRITING BY THE OWNER OR HIS REPRESENTATIVE.
 - NO REVISIONS SHALL BE MADE IN THESE PLANS WITHOUT THE APPROVAL OF THE COUNTY ENGINEER.
 - USE STANDARD MANHOLE FRAMES AND COVERS, S-A-117, EXCEPT AS NOTED.
 - USE STANDARD STRENGTH PIPE EXCEPT AS NOTED.
 - USE CEMENT MORTAR FOR ALL VITRIFIED CLAY PIPE JOINTS.
 - RESURFACE ALL TRENCH WITHIN PAVED AREA TO MEET L. A. COUNTY ROAD DEPT., OR CALIF. STATE HIGHWAY DEPT. REQUIREMENTS IN ACCORDANCE WITH PERMITS.
 - ENCASE FOUR FEET OF SEWES AT POINTS OF INTERFERENCE WITH POLES, CASE III, E-8-172.
 - HOUSE LATERALS TO BE CONSTRUCTED WITH 8" V.C.P. EXCEPT AS NOTED.
 - ALL STRUCTURES SHALL BE BRICK SEWER STRUCTURES, S-A-104, EXCEPT AS NOTED.
 - FOR ALLOWABLE LEAKAGE TEST USE FORMULA NO. C.N.E. SPEC. SEC. 54.
 - MANHOLE TOPS IN UNIMPROVED RIGHTS-OF-WAY TO BE 6" IN UNFINISHED GRADE.
 - ALL THE LOCATIONS SHOWN FOR EXISTING SUBSTRUCTURES HAVE BEEN TAKEN FROM RECORDS AND THEIR CORRECTNESS AND COMPLETENESS IS IN NO WAY GUARANTEED, IT SHALL BE THE CONTRACTOR'S RESPONSIBILITY ALONE TO DEFINITELY LOCATE ALL UNDERGROUND LINES OF EVERY NATURE WHETHER SHOWN HEREON OR NOT, AND PROTECT THEM FROM DAMAGE. THE CONTRACTOR SHALL BEAR THE TOTAL EXPENSE OF REPAIR TO ANY LINE DAMAGED BY ANY OPERATION IN CONNECTION WITH THE PROSECUTION OF THIS WORK.
 - THE PRIVATE ENGINEER IS TO FURNISH THE HOUSE LATERAL DEPTH AS THE PROPERTY LINE BELOW THE TOP OF CURB ELEVATION FOR EACH HOUSE LATERAL ON THE GRADE SHEET.
- NOTE:
 THE CONTRACTOR SHALL NOTIFY THE CONSTRUCTION AND STORM DRAIN DIVISION BY TELEPHONE, MADISON 9-4747, EXT. 362, AT LEAST 24 HOURS BEFORE STARTING ANY WORK UNDER THIS CONTRACT.



P.C.4575 PAGE 2

25,614

NO CHARGE
 FOR CONNECTIONS

11-7-57