

PUENTE BLDG. DIST. NO. 2

PROFILE ALIGNMENT AND GRADE OF P.C. 4578
 SANITARY SEWERS PAGE 1
 TO BE CONSTRUCTED IN

TRACT NO. 22725 25,580

PRIVATE CONTRACT NO. 4578

W.S. 38

3 SHEETS, 6 PAGES

SCALE: VERT. 1" = 4' HORIZ. 1" = 40' OCTOBER 1957

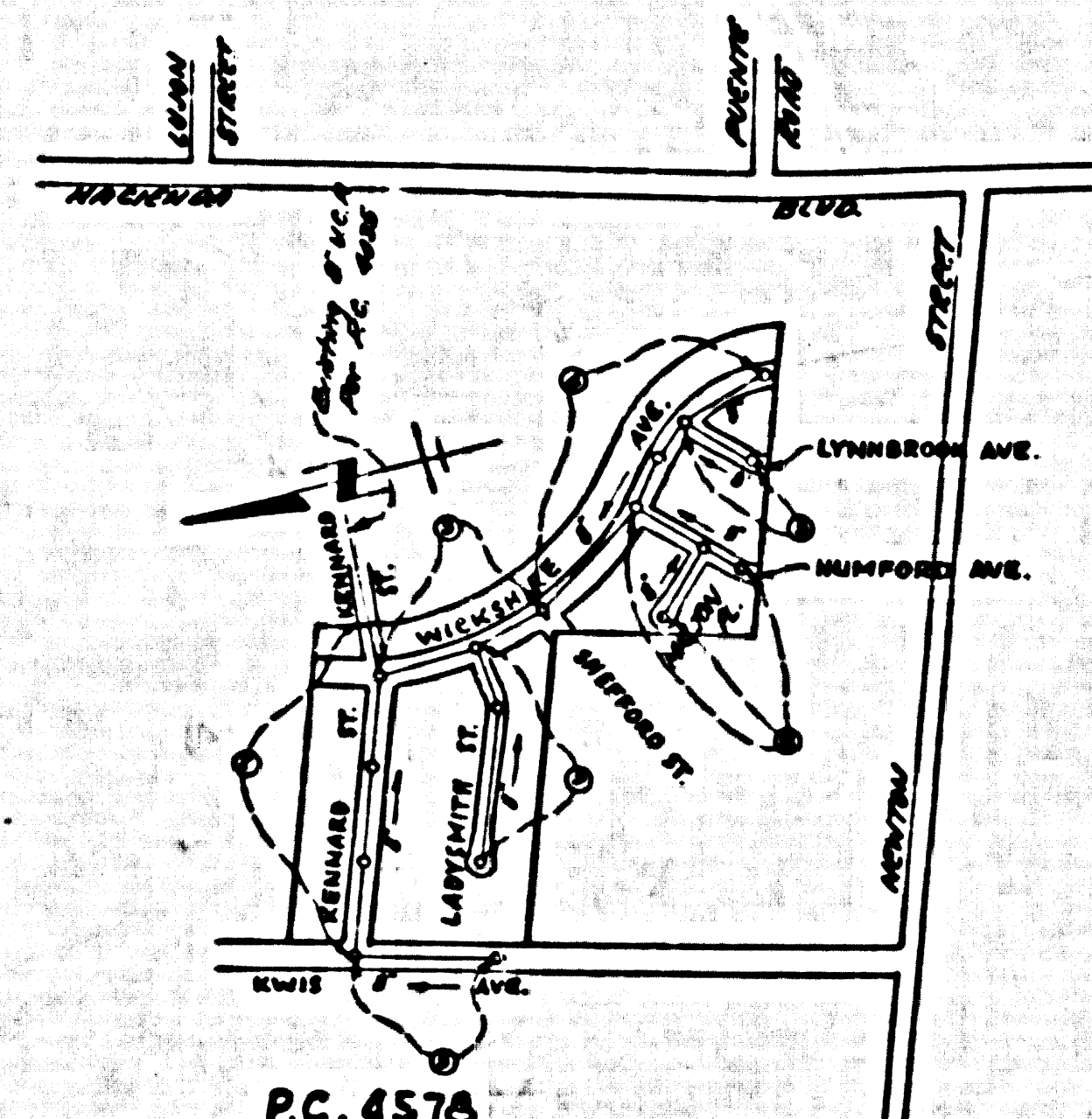
PREPARED IN THE OFFICES OF

NATIONAL ENGINEERING CO.

By Edmund J. Ferguson
 REG. E. E. NO. 5828

FOR LEGEND SEE PLAN NO. S-A-64

- NOTE:
 PROVIDE STAKES ON THE PROPERTY LINE OR PROPERTY LINES PRODUCED AT RIGHT ANGLES TO THE SEWER LINE AT THE CENTER LINE OF EACH MANHOLE.
 NO REPRESENTATIVE OF THE COUNTY ENGINEER WILL SURVEY OR LAYOUT ANY PORTION OF THE WORK.
 THE OWNER OR HIS AUTHORIZED REPRESENTATIVE SHALL FURNISH THE COUNTY ENGINEER WITH GRADE SHEETS AND STATIONING FOR ALL HOUSE LATERALS AND Y BRANCHES AND SHALL PROVIDE STAKES FOR THEM AT THEIR PROPER LOCATIONS WITH STATIONING PLAINLY MARKED. ANY CHANGE IN LOCATION SHALL BE REQUESTED IN WRITING BY THE OWNER OR HIS REPRESENTATIVE.
 NO REVISIONS SHALL BE MADE IN THESE PLANS WITHOUT THE APPROVAL OF THE COUNTY ENGINEER.
1. USE STANDARD MANHOLE FRAMES AND COVERS, S-A-117, EXCEPT AS NOTED.
 2. USE STANDARD STRENGTH PIPE EXCEPT AS NOTED.
 3. USE CEMENT MORTAR FOR ALL VITRIFIED CLAY PIPE JOINTS.
 4. BRIDGE ALL TRENCH WITHIN PAVED AREA TO MEET L. A. COUNTY ROAD DEPT. OR CALIF. STATE HIGHWAY DEPT. REQUIREMENTS IN ACCORDANCE WITH PERMITS.
 5. INCASE FOUR FEET OF SEWER AT POINTS OF INTERFERENCE WITH POLES, S-A-119.
 6. HOUSE LATERALS TO BE CONSTRUCTED WITH INVERTS AT FINISHED GRADE \pm 1.0 FEET BELOW CURB GRADE EXCEPT AS NOTED.
 7. ALL STRUCTURES SHALL BE BRICK SEWER STRUCTURES, S-A-116, EXCEPT AS NOTED.
 8. FOR ALLOWABLE LEAKAGE TEST USE FORMULA NO. _____ SPEC'S. SEC. 84.
 9. MANHOLE TOPS IN UNIMPROVED RIGHTS-OF-WAY TO BE 6" ABOVE FINISHED GRADE.
 10. THE PRIVATE ENGINEER IS TO FURNISH THE 1/4" SCALE LATERAL MAPS AT THE PROPERTY LINE BELOW THE TOP OF CURB ELEVATION FOR EACH HOUSE LATERAL, IN THE GRADE SHEETS.



P.C. 4578
 INDEX MAP
 TRACT NO. 22725
 SCALE - 1" = 600'

B.M. 38-12 ELEV. 351.544
 CO. SURVEYORS MOUNTAIN
 CORNER 9' BELOW SURFACE 80.7' W. OF
 E. HAZEN BLDG. & 23.5' S. OF R.P. =
 8758051-E

CONNECTION CHARGES
 AS INDICATED
L. Curtis 10-23-57

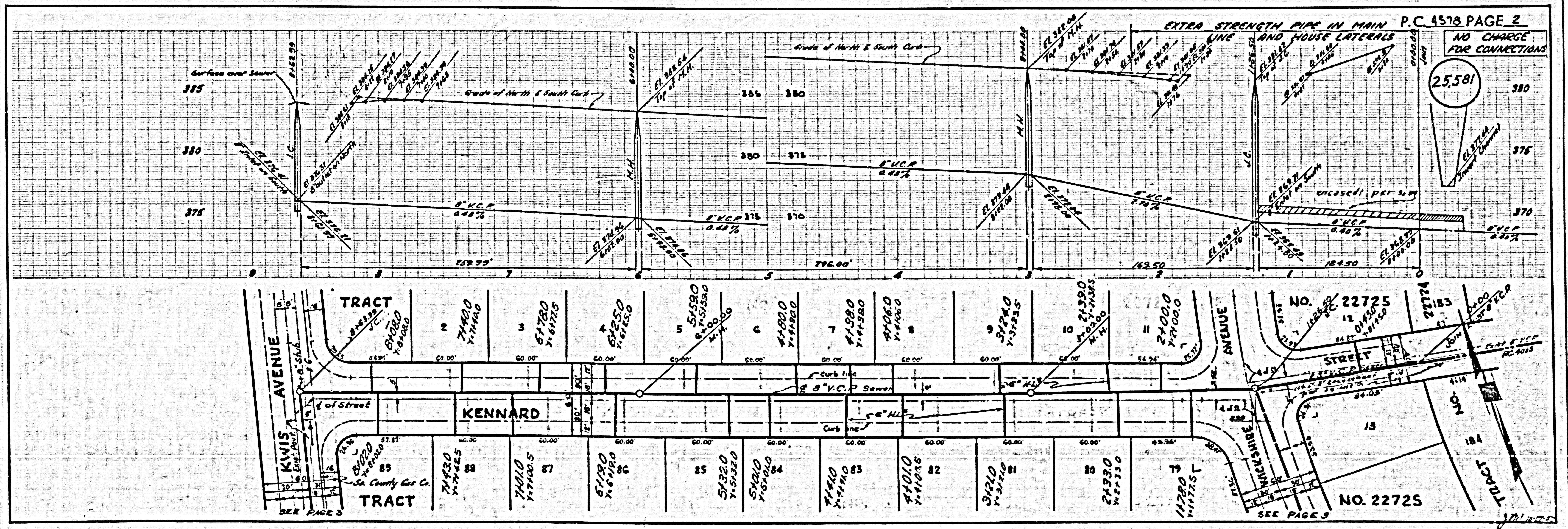
NOTE:
 THE CONTRACTOR SHALL NOTIFY THE CONSTRUCTION AND STORM DRAIN DIVISION BY TELEPHONE, MADISON 9-4747, EXT. 302, AT LEAST 24 HOURS BEFORE STARTING ANY WORK UNDER THIS CONTRACT.

REVISION:
 Release of J.C. @ Intersection of
 Washburn Ave. & Kennard Street.
 APPROVED BY: C. P. ... DATE 12/25/57

NOTE:
 GRADES TO WHICH THIS IMPROVEMENT IS TO BE CONSTRUCTED ARE SHOWN ON PLANS AND PROFILE GRADE POINTS FOR TOP OF CURB, CENTER LINE OF STREETS, OR CENTER LINE OF ALLEYS ARE SHOWN BY CIRCLES OR POINTS BY ALL PORTS BETWEEN DESIGNATED POINTS THE GRADE SHALL BE ESTABLISHED SO AS TO CONFORM TO A STRAIGHT LINE DRAWN BETWEEN SAID DESIGNATED POINTS.
 ELEVATIONS ARE IN FEET ABOVE U.S.C. & G.S. MEAN SEA LEVEL, DATUM OF 1929.
 THE BEARING AND THE DATA HEREON ARE HEREBY MADE A PART OF THE SPECIFICATIONS.
 WORK SHALL BE CONSTRUCTED ACCORDING TO SPECIFICATIONS ON FILE IN THE OFFICE OF THE COUNTY ENGINEER AND SHALL BE PROSECUTED ONLY IN THE PRESENCE OF THE COUNTY ENGINEER.
 BEFORE WORK CAN BE STARTED, THE CONTRACTOR MUST OBTAIN A PERMIT TO EXCAVATE IN COUNTY STREETS FROM THE L. A. COUNTY ROAD DEPT., 126 W. 2ND ST. AND MAKE A DEPOSIT WITH THE COUNTY ENGINEER, ROOM 324 PAIN AMERICAN BUILDING, 328 SO. BROADWAY SUFFICIENT TO COVER THE COST OF CONSTRUCTION INSPECTION AND RECORD PLANS.
 APPROVAL OF THIS PLAN BY THE COUNTY OF LOS ANGELES DOES NOT CONSTITUTE A REPRESENTATION AS TO THE ACCURACY OF THE LOCATION OF OR THE EXISTENCE OR NON-EXISTENCE OF ANY UNDERGROUND UTILITY PIPE, OR STRUCTURE WITHIN THE LIMITS OF THIS PROJECT. THIS NOTE APPLIES TO ALL PAGES.
 IF WORK IS TO BE DONE IN A STATE HIGHWAY, A PERMIT MUST BE OBTAINED FROM THE STATE OF CALIFORNIA, DIVISION OF HIGHWAYS, 130 SOUTH SPRING STREET.

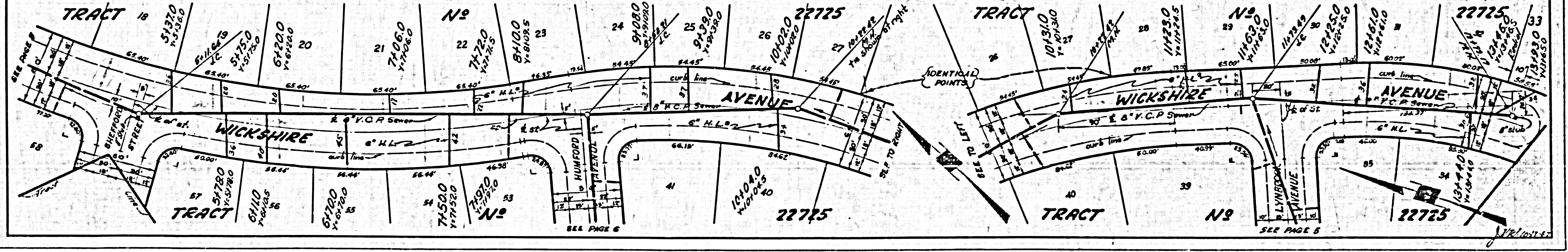
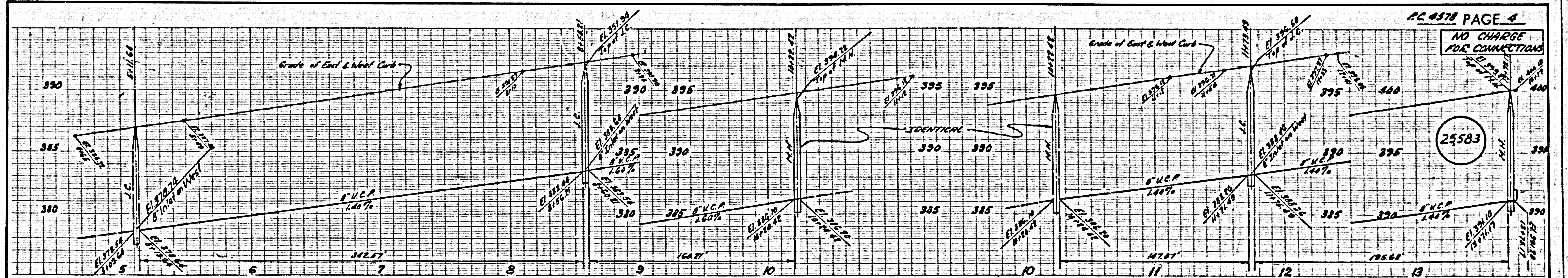
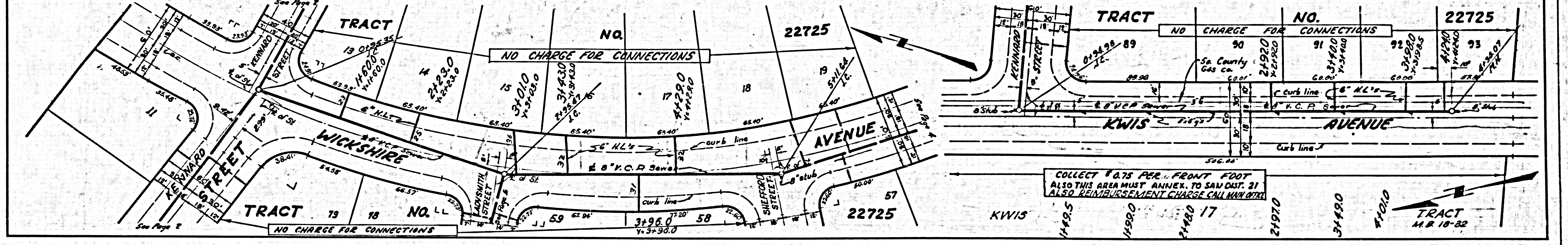
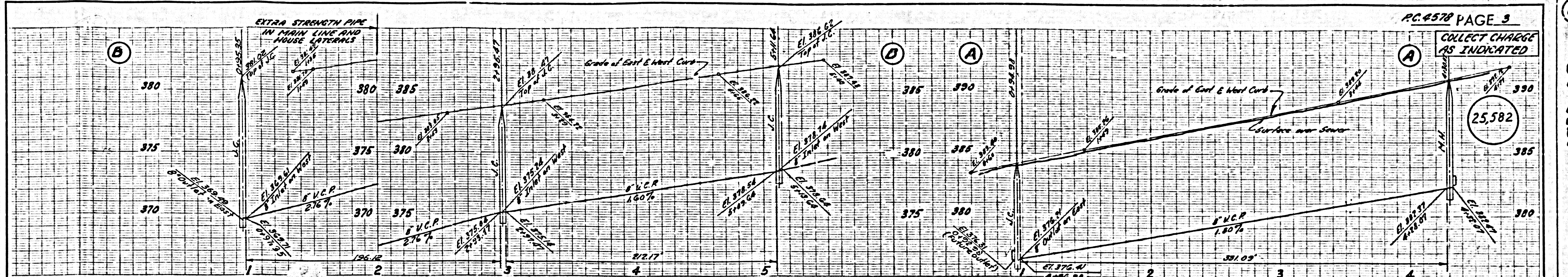
COUNTY OF LOS ANGELES, CALIFORNIA

APPROVED, JOHN A. LAMBE, COUNTY ENGINEER
 APPROVED, A. M. RAWLIN, CHIEF ENGINEER
 CO. SANITARY DIV. NO. 21
 By E. J. ... M. ...
 SANITATION ENGINEER OFFICE ENGINEER
 CHECKED BY ... DATE 10-23-57
 OFFICE OF COUNTY ENGINEER, 328 S. W. 2ND ST.



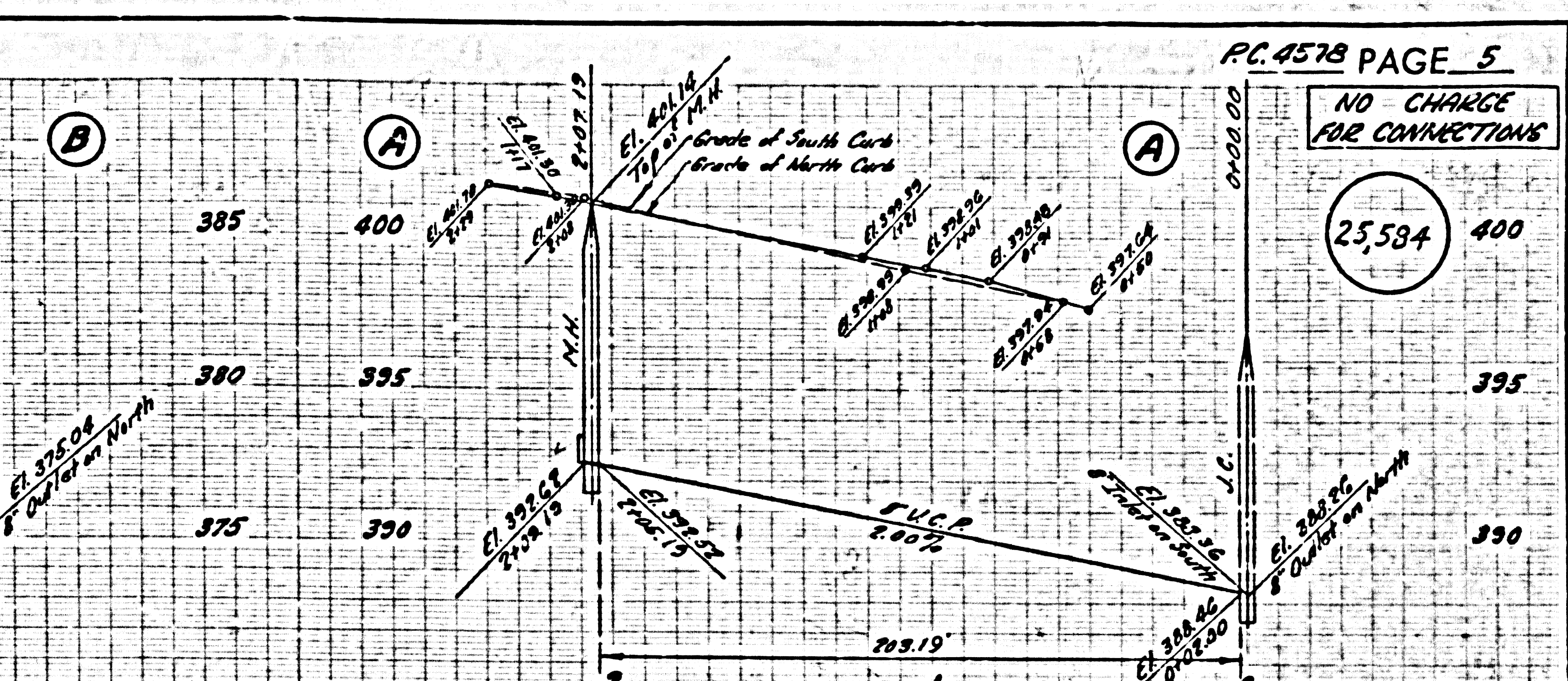
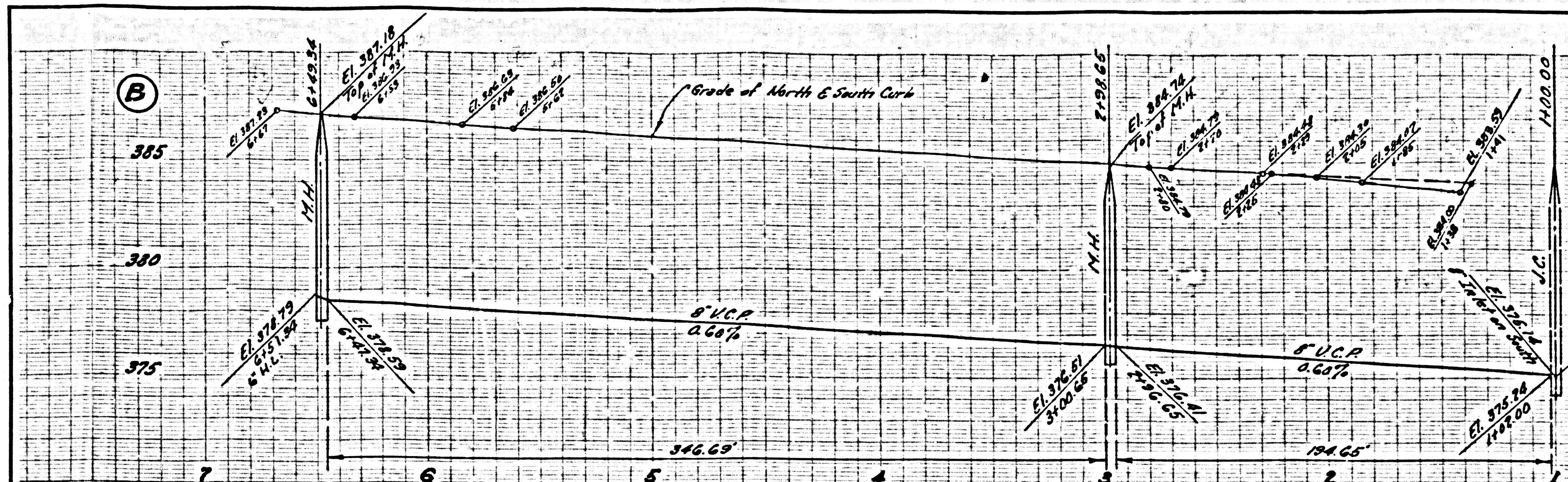
EXTRA STRENGTH PIPE IN MAIN AND HOUSE LATERALS
 NO CHARGE FOR CONNECTIONS
25,581

TRACT NO. 22725
 KENNARD AVENUE
 Kwis Avenue
 Washburn Avenue
 Street
 SEE PAGE 3

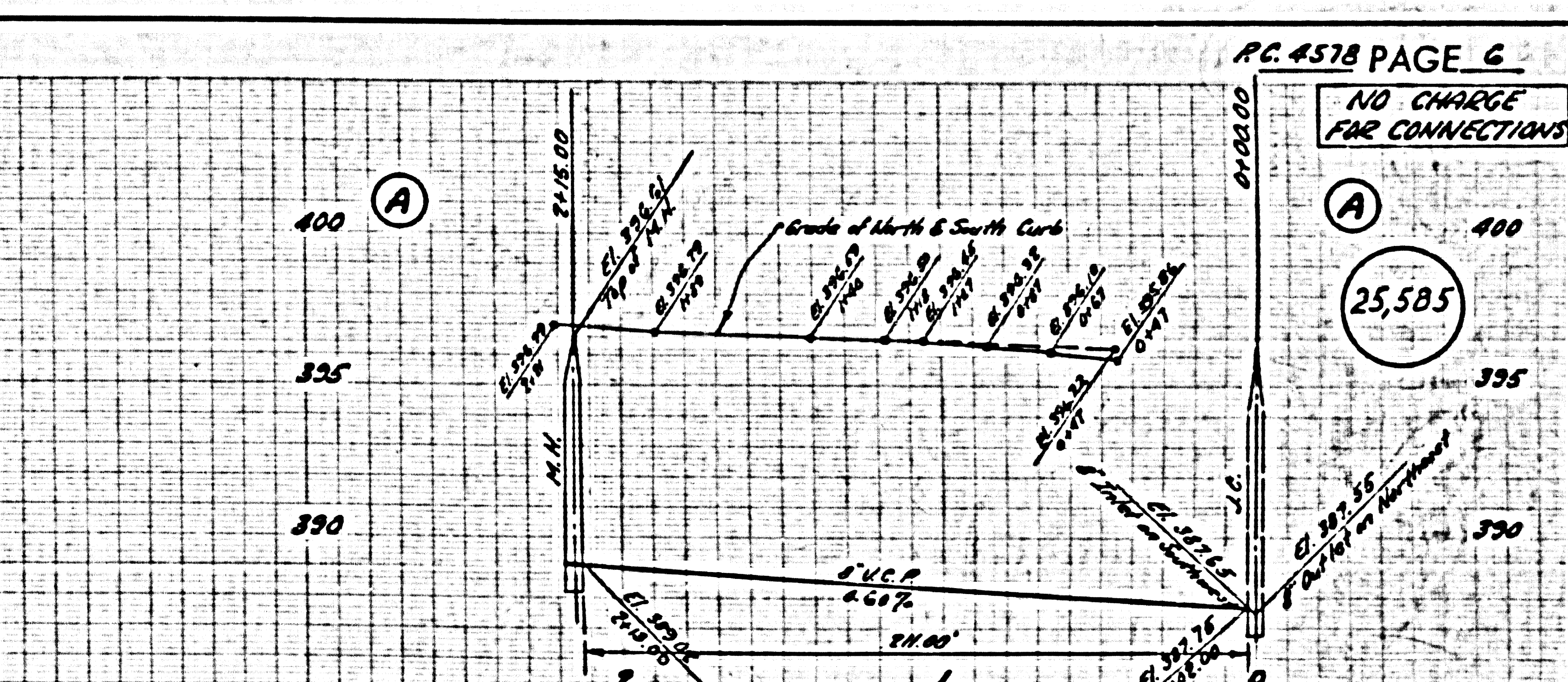
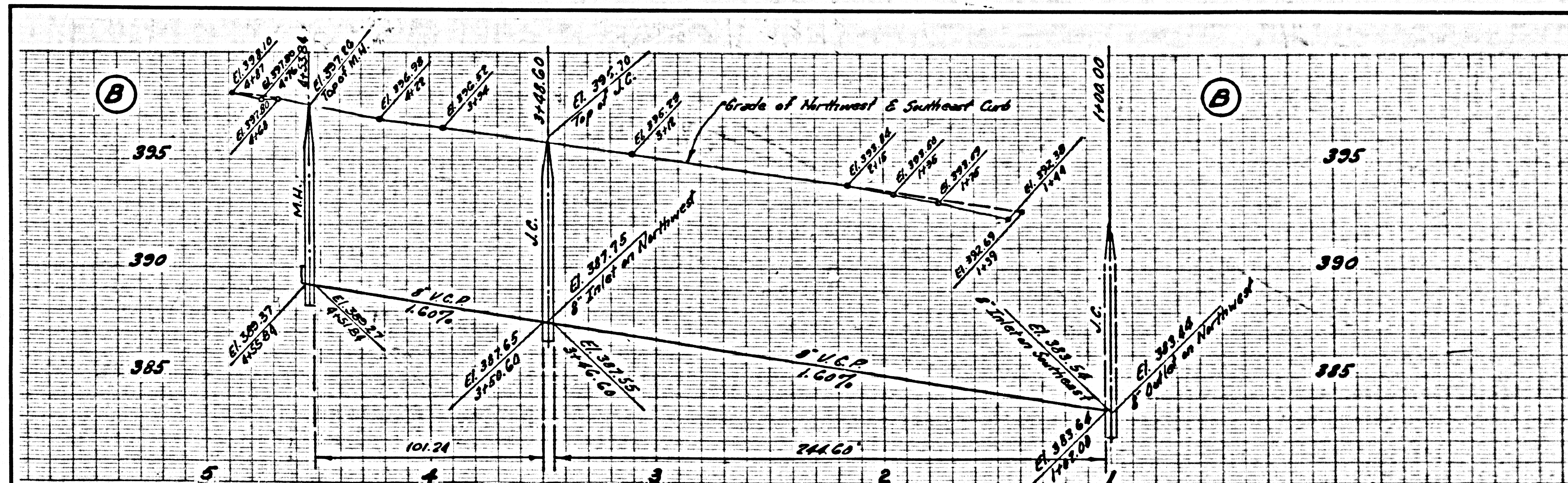
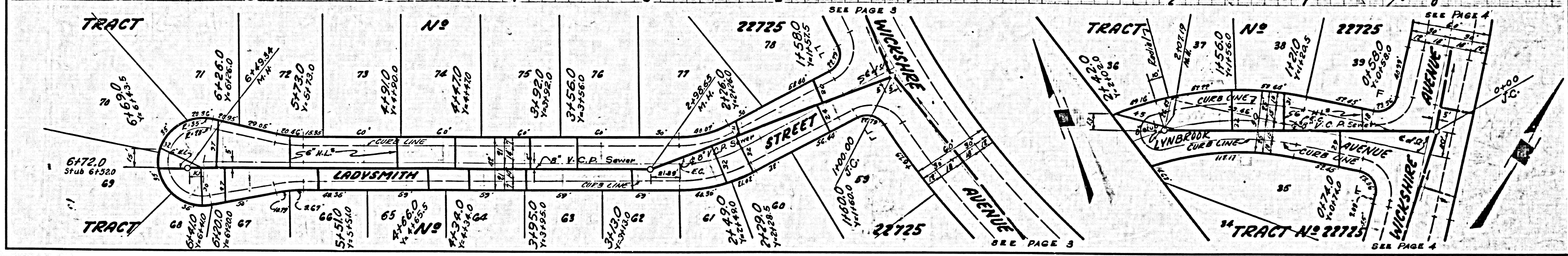


25582

25583



PC. 4578 PAGE 5
NO CHARGE FOR CONNECTIONS
25.584



PC. 4578 PAGE 6
NO CHARGE FOR CONNECTIONS
25.585

