

INDEX MAP
SCALE: 1" = 600'
P.C. 4579

BENCH MARK: S.G. NO. 1347
L.I.N. near center of Curb
Return of S.E. corner of
Gale Ave. & 7th Ave.
ELEVATION = 361.332 (1954)

CONNECTION CHARGES
AS INDICATED
777 1/2 12-1-57

PUENTE BLDG. DIST. NO. 2

- NOTE:
PROVIDE STAKES ON THE PROPERTY LINE OR PROPERTY LINES PRODUCED AT RIGHT ANGLES TO THE SEWER LINE AT THE CENTER LINE OF EACH MANHOLE.
NO REPRESENTATIVE OF THE COUNTY ENGINEER WILL SURVEY OR LAYOUT ANY PORTION OF THE WORK.
THE OWNER OR HIS AUTHORIZED REPRESENTATIVE SHALL FURNISH THE COUNTY ENGINEER WITH GRADE SHEETS AND STATIONING PLAINLY MARKED. ANY CHANGE IN LOCATION SHALL BE REQUESTED IN WRITING BY THE OWNER OR HIS REPRESENTATIVE.
NO REVISIONS SHALL BE MADE IN THESE PLANS WITHOUT THE APPROVAL OF THE COUNTY ENGINEER.
1. USE STANDARD MANHOLE FRAMES AND COVERS, S.A.-117, EXCEPT AS NOTED.
 2. USE STANDARD STRENGTH PIPE EXCEPT AS NOTED.
 3. USE CEMENT MORTAR FOR ALL VITRIFIED CLAY PIPE JOINTS.
 4. REGRADE ALL TERRACE WITHIN PAVED AREA TO MEET L. A. COUNTY ROAD DEPT. OR CALIF. STATE HIGHWAY DEPT. REQUIREMENTS IN ACCORDANCE WITH PERMITS.
 5. ENCASE FOUR FEET OF SEWER AT POINTS OF INTERFERENCE WITH POLES, S.A.-119.
 6. HOUSE LATERALS TO BE CONSTRUCTED WITH DOWNS AS PROPERTYS LINE. SEE SHOWING OVER GRADE EXCEPT AS NOTED.
 7. ALL STRUCTURES SHALL BE BRICK SEWER STRUCTURES, S.A.-104, EXCEPT AS NOTED.
 8. FOR ALLOWABLE LEAKAGE TEST USE FORMULA NO. 1 SPEC. SEC. 26.
 9. MANHOLE TOPS IN UNIMPROVED RIGHTS-OF-WAY TO BE 6" ABOVE FINISHED GRADE.

NOTE:
THE CONTRACTOR SHALL NOTIFY THE CONSTRUCTION AND STORM DRAIN DIVISION BY TELEPHONE, MADISON 9-4747, EXT. 362, AT LEAST 24 HOURS BEFORE STARTING ANY WORK UNDER THIS CONTRACT.

NOTE:
THIS SEWER WILL NOT BE AVAILABLE FOR USE UNTIL THE OUTLET SEWER ON TURNBULL CANYON ROAD BETWEEN PALM AVENUE AND GALE AVENUE HAS BEEN CONSTRUCTED.

TO BE CONSTRUCTED IN
TURNBULL CANYON ROAD
AND
LOS ALTOS HIGH SCHOOL SITE
PRIVATE CONTRACT NO. 4579

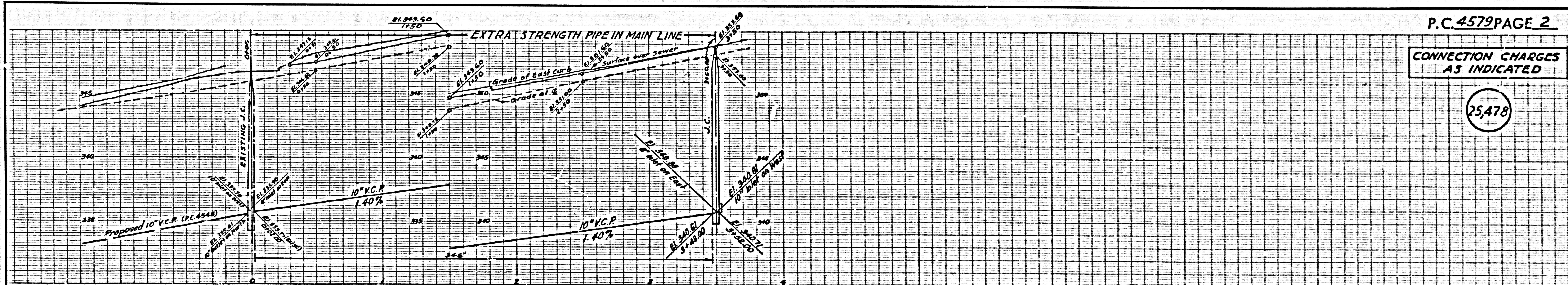
W.S. 37
5 SHEETS, 6 PAGES
SCALE: 1" = 6" OCTOBER 1957
PREPARED IN THE OFFICES OF
KISTNER, WRIGHT & WRIGHT
ARCHITECTS AND ENGINEERS
H.C. Vandeweyer
REG. C. E. NO. 2617
FOR LEGEND SEE PLAN NO. S.A.-64

NOTE:
GRADES TO WHICH THE IMPROVEMENT IS TO BE CONSTRUCTED ARE SHOWN ON PLANS AND PROFILE. GRADE POINTS FOR TOP OF CURB, CENTER LINE OF STREETS, OR CENTER LINE OF ALLEYS ARE SHOWN BY CIRCLES ON PROFILES. AT ALL POINTS BETWEEN UNSPICED POINTS THE GRADE SHALL BE ESTABLISHED SO AS TO CONFORM TO A STRAIGHT LINE DRAWN BETWEEN SAID SPICED POINTS.
ELEVATIONS ARE IN FEET ABOVE U.S.C. & G.S. SEA LEVEL DATUM OF 1929.
THIS DRAWING AND THE DATA HEREON ARE HEREBY MADE A PART OF THE SPECIFICATIONS.
WORK SHALL BE CONSTRUCTED ACCORDING TO SPECIFICATIONS ON FILE IN THE OFFICE OF THE COUNTY ENGINEER AND SHALL BE PROSECUTED ONLY IN THE PRESENCE OF THE COUNTY ENGINEER.
WORK SHOULD NOT BE STARTED UNTIL THE CONTRACTOR HAS OBTAINED A PERMIT TO BECAUSE IN COUNTY STREETS FROM THE L. A. COUNTY ROAD DEPT., 156 W. 2ND ST. AND MAKE A REPORT WITH THE COUNTY ENGINEER, ROOM 224 PALM AVENUE, BUREAU 224 SO. BROADWAY IMMEDIATELY TO COVER THE COST OF CONSTRUCTION INSPECTION AND RECORD PLANS.
APPROVAL OF THIS PLAN BY THE COUNTY OF LOS ANGELES DOES NOT CONSTITUTE A REPRESENTATION AS TO THE ACCURACY OF THE LOCATION OF OR THE EXISTENCE OR NON-EXISTENCE OF ANY UNDERGROUND UTILITY PIPE, OR STRUCTURE WITHIN THE LIMITS OF THIS PROJECT. THIS NOTE APPLIES TO ALL PAGES.
IF WORK IS TO BE DONE IN A STATE HIGHWAY, A PERMIT MUST BE OBTAINED FROM THE STATE OF CALIFORNIA, DIVISION OF HIGHWAYS, 120 SOUTH BRIDGE STREET.

COUNTY OF LOS ANGELES, CALIFORNIA

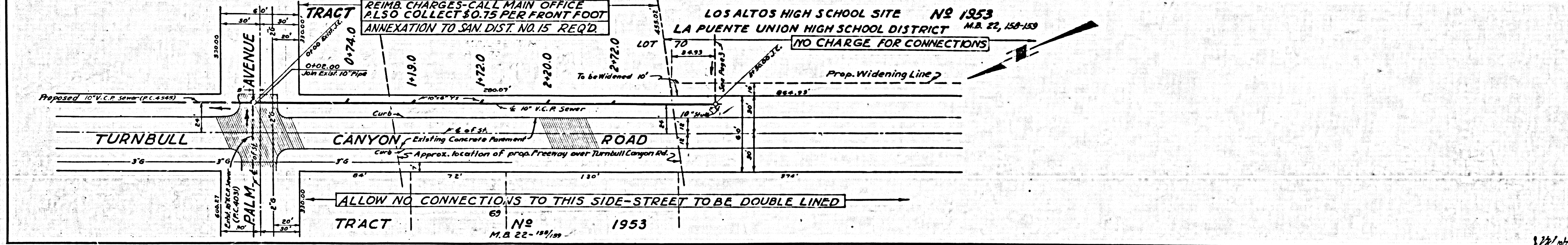
APPROVED, JOHN A. LAMBE, COUNTY ENGINEER
APPROVED, A. M. BAWN, CHIEF ENGINEER
BY: N. F. Bravender, DIST. SANITATION ENGINEER
BY: J. P. Pasternack, OFFICE ENGINEER
CHECKED BY: R. V. Onda, 12-11-57
OFFICE OF COUNTY ENGINEER, REG. C. E. NO. 2616

NOTE:
THE APPROVAL OF THIS PRINTED CONTRACT BY THE COUNTY ENGINEER APPLIES TO 6" OR LARGER SANITARY SEWER LINES AND MANHOLES ONLY.



CONNECTION CHARGES
AS INDICATED

25478



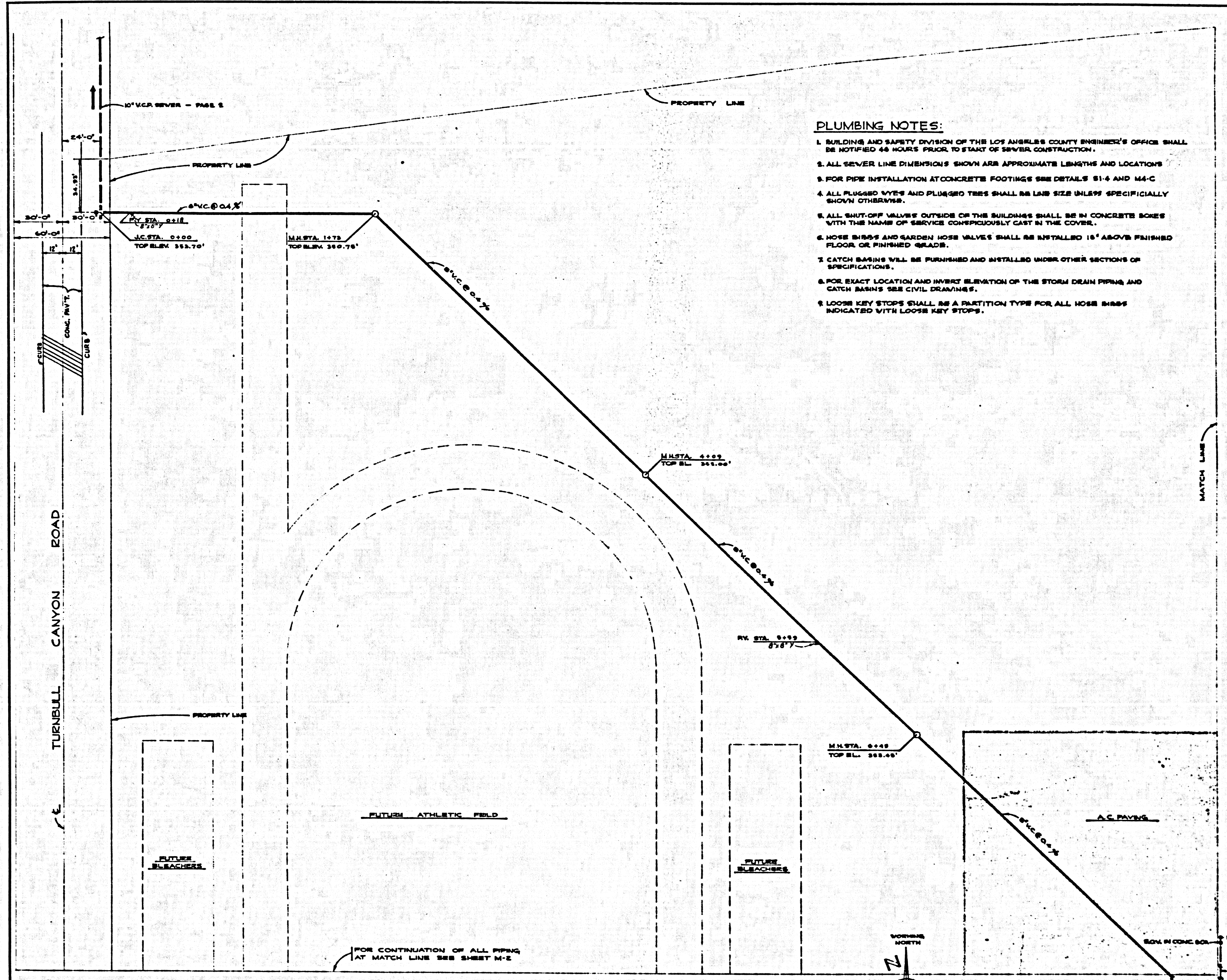
REIMB. CHARGES-CALL MAIN OFFICE
ALSO COLLECT \$0.75 PER FRONT FOOT
ANNEXATION TO SAN. DIST. NO. 15 REQ'D.

LOS ALTOS HIGH SCHOOL SITE NO 1953
LA PUENTE UNION HIGH SCHOOL DISTRICT M.B. 22, 158-159
NO CHARGE FOR CONNECTIONS

ALLOW NO CONNECTIONS TO THIS SIDE-STREET TO BE DOUBLE LINED

TRACT NO 1953
M.B. 22-159/159

3/21/57

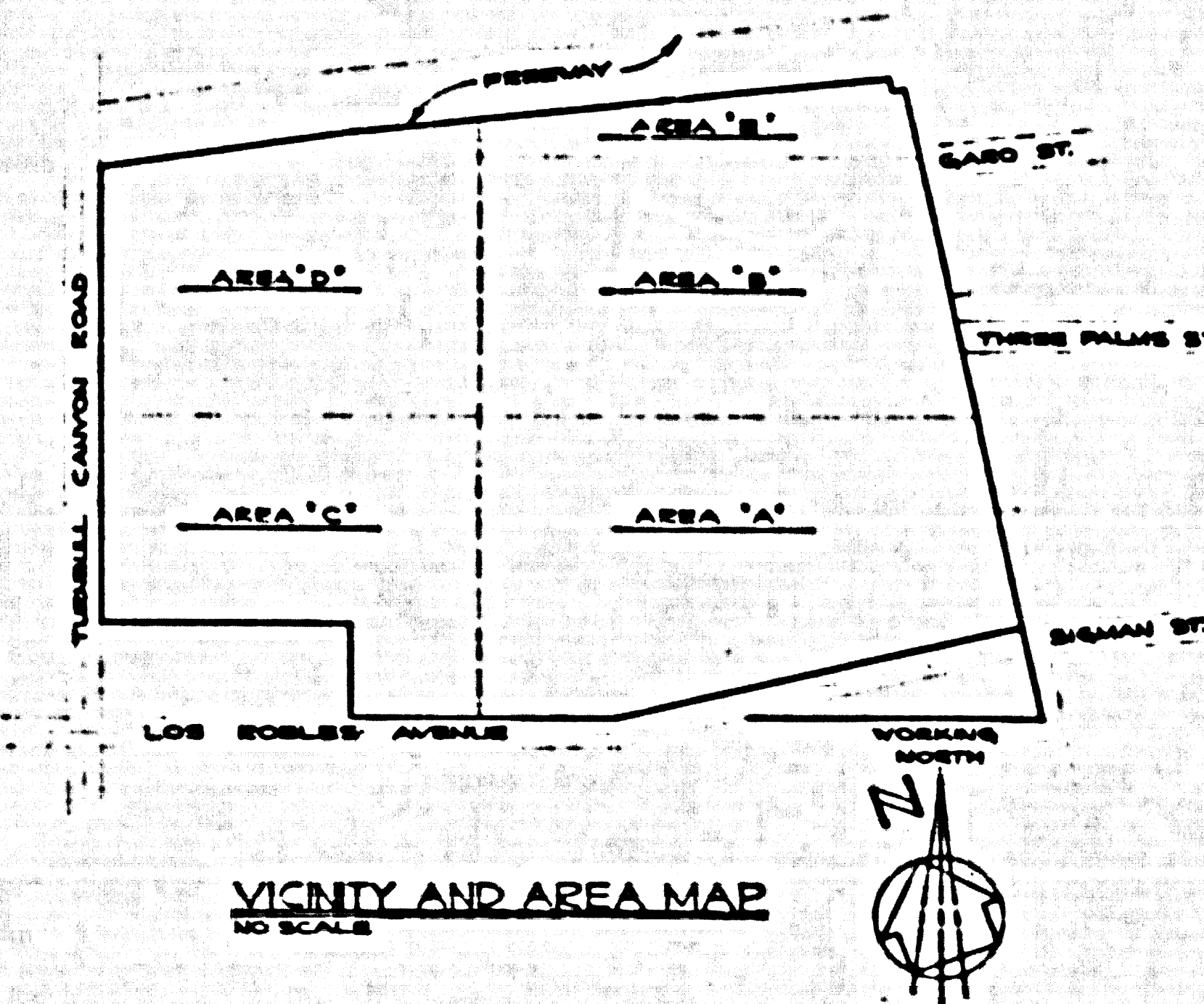


PLUMBING NOTES:

- BUILDING AND SAFETY DIVISION OF THE LOS ANGELES COUNTY ENGINEER'S OFFICE SHALL BE NOTIFIED 48 HOURS PRIOR TO START OF SEWER CONSTRUCTION.
- ALL SEWER LINE DIMENSIONS SHOWN ARE APPROXIMATE LENGTHS AND LOCATIONS.
- FOR PIPE INSTALLATION AT CONCRETE FOOTINGS SEE DETAILS S1-4 AND M-4-C.
- ALL PLUGGED NYES AND PLUGGED TEES SHALL BE LAB SIZE UNLESS SPECIFICALLY SHOWN OTHERWISE.
- ALL SHUT-OFF VALVES OUTSIDE OR THE BUILDING SHALL BE IN CONCRETE BOXES WITH THE NAME OF SERVICE CONSPICUOUSLY CAST IN THE COVER.
- HOSE BIBBS AND GARDEN HOSE VALVES SHALL BE INSTALLED 18" ABOVE FINISHED FLOOR OR FINISHED GRADE.
- CATCH BASINS WILL BE FURNISHED AND INSTALLED UNDER OTHER SECTIONS OF SPECIFICATIONS.
- FOR EXACT LOCATION AND INVERT ELEVATION OF THE STORM DRAIN PIPING AND CATCH BASINS SEE CIVIL DRAWINGS.
- LOOSE KEY STOPS SHALL BE A PARTITION TYPE FOR ALL HOSE BIBBS INDICATED WITH LOOSE KEY STOPS.

| | | | |
|---|---|---|--|
| — | SEWER MAIN | — | VENT PIPE |
| — | SEWER BRANCH | — | VENT BRANCH |
| — | SEWER FITTING | — | VENT FITTING |
| — | SEWER VALVE | — | VENT VALVE |
| — | SEWER TEE | — | VENT TEE |
| — | SEWER Y | — | VENT Y |
| — | SEWER CROSS | — | VENT CROSS |
| — | SEWER END | — | VENT END |
| — | SEWER CLEANOUT | — | VENT CLEANOUT |
| — | SEWER CLEANOUT VALVE | — | VENT CLEANOUT VALVE |
| — | SEWER CLEANOUT BOX | — | VENT CLEANOUT BOX |
| — | SEWER CLEANOUT COVER | — | VENT CLEANOUT COVER |
| — | SEWER CLEANOUT FLOOR | — | VENT CLEANOUT FLOOR |
| — | SEWER CLEANOUT WALL | — | VENT CLEANOUT WALL |
| — | SEWER CLEANOUT CEILING | — | VENT CLEANOUT CEILING |
| — | SEWER CLEANOUT ROOF | — | VENT CLEANOUT ROOF |
| — | SEWER CLEANOUT GROUND | — | VENT CLEANOUT GROUND |
| — | SEWER CLEANOUT UNDERGROUND | — | VENT CLEANOUT UNDERGROUND |
| — | SEWER CLEANOUT ABOVEGROUND | — | VENT CLEANOUT ABOVEGROUND |
| — | SEWER CLEANOUT BELOWGROUND | — | VENT CLEANOUT BELOWGROUND |
| — | SEWER CLEANOUT OUTSIDE | — | VENT CLEANOUT OUTSIDE |
| — | SEWER CLEANOUT INSIDE | — | VENT CLEANOUT INSIDE |
| — | SEWER CLEANOUT EXTERIOR | — | VENT CLEANOUT EXTERIOR |
| — | SEWER CLEANOUT INTERIOR | — | VENT CLEANOUT INTERIOR |
| — | SEWER CLEANOUT EXTERIOR INSIDE | — | VENT CLEANOUT EXTERIOR INSIDE |
| — | SEWER CLEANOUT INTERIOR OUTSIDE | — | VENT CLEANOUT INTERIOR OUTSIDE |
| — | SEWER CLEANOUT EXTERIOR INSIDE OUTSIDE | — | VENT CLEANOUT EXTERIOR INSIDE OUTSIDE |
| — | SEWER CLEANOUT INTERIOR OUTSIDE INSIDE | — | VENT CLEANOUT INTERIOR OUTSIDE INSIDE |
| — | SEWER CLEANOUT EXTERIOR INSIDE INSIDE | — | VENT CLEANOUT EXTERIOR INSIDE INSIDE |
| — | SEWER CLEANOUT INTERIOR OUTSIDE OUTSIDE | — | VENT CLEANOUT INTERIOR OUTSIDE OUTSIDE |
| — | SEWER CLEANOUT EXTERIOR INSIDE OUTSIDE INSIDE | — | VENT CLEANOUT EXTERIOR INSIDE OUTSIDE INSIDE |
| — | SEWER CLEANOUT INTERIOR OUTSIDE OUTSIDE INSIDE | — | VENT CLEANOUT INTERIOR OUTSIDE OUTSIDE INSIDE |
| — | SEWER CLEANOUT EXTERIOR INSIDE OUTSIDE OUTSIDE | — | VENT CLEANOUT EXTERIOR INSIDE OUTSIDE OUTSIDE |
| — | SEWER CLEANOUT INTERIOR OUTSIDE OUTSIDE OUTSIDE | — | VENT CLEANOUT INTERIOR OUTSIDE OUTSIDE OUTSIDE |
| — | SEWER CLEANOUT EXTERIOR INSIDE OUTSIDE OUTSIDE INSIDE | — | VENT CLEANOUT EXTERIOR INSIDE OUTSIDE OUTSIDE INSIDE |
| — | SEWER CLEANOUT INTERIOR OUTSIDE OUTSIDE OUTSIDE INSIDE | — | VENT CLEANOUT INTERIOR OUTSIDE OUTSIDE OUTSIDE INSIDE |
| — | SEWER CLEANOUT EXTERIOR INSIDE OUTSIDE OUTSIDE OUTSIDE | — | VENT CLEANOUT EXTERIOR INSIDE OUTSIDE OUTSIDE OUTSIDE |
| — | SEWER CLEANOUT INTERIOR OUTSIDE OUTSIDE OUTSIDE OUTSIDE | — | VENT CLEANOUT INTERIOR OUTSIDE OUTSIDE OUTSIDE OUTSIDE |

(25,479)

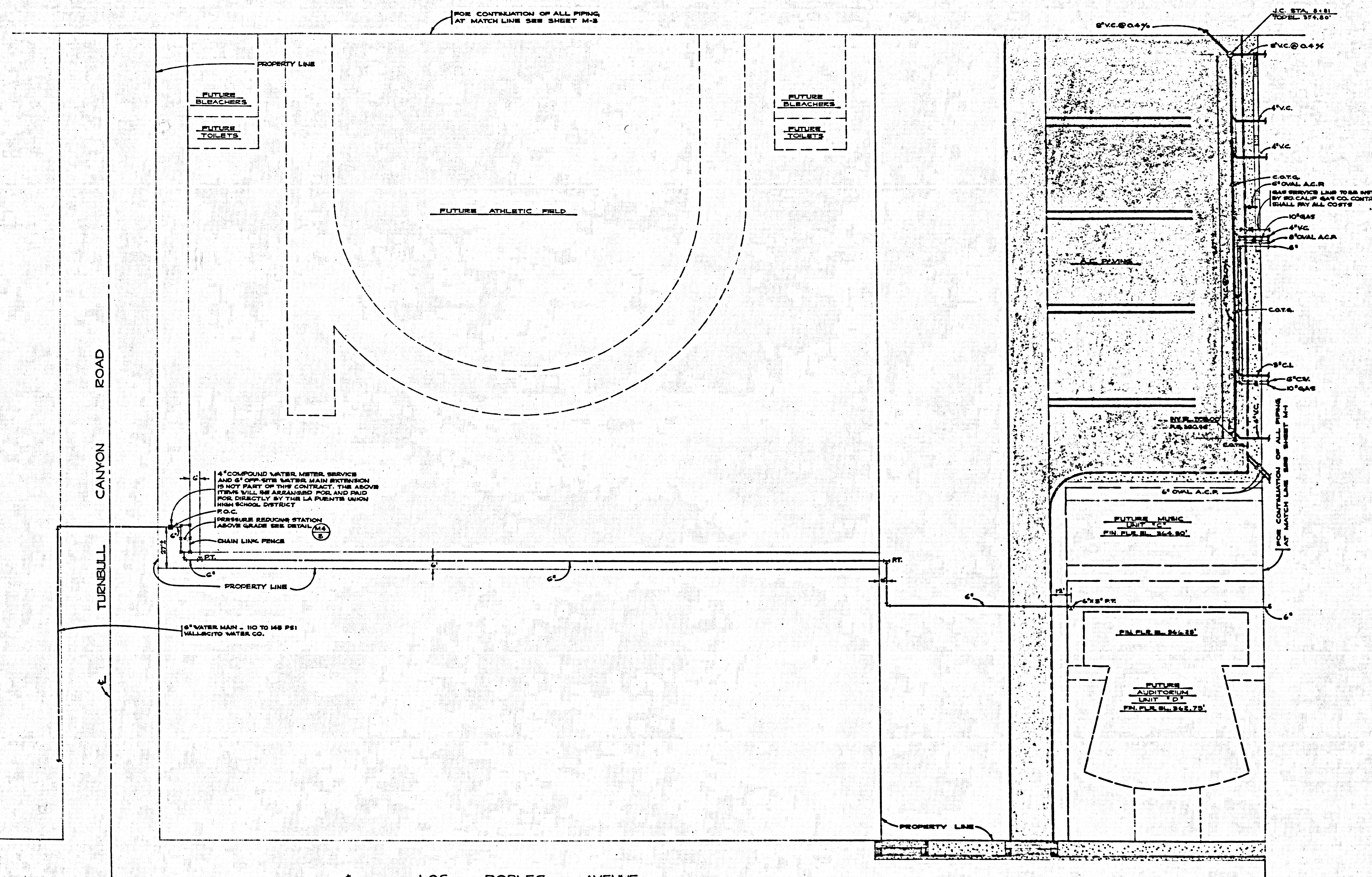


NOTE:
FOR SEWER PROFILES SEE SHEET M-4 (PAGE 6)

P.C. 4577
PAGE 3

PLUMBING PLOT PLAN — AREA "D"
SCALE: 1" = 80'-0"

| | | | |
|---|---|--|--|
| KISTNER, WRIGHT & WRIGHT | ARCHITECTURE - ENGINEERING ARTHUR J. RENDON & LEWIS K OSBORN, ASSOCIATES LOS ANGELES, CALIFORNIA | PLUMBING PLOT PLAN - AREA "D" LOS ALTOS HIGH SCHOOL LA PUENTE UNION HIGH SCHOOL DISTRICT LA PUENTE CALIFORNIA | DATE: OCT. 1977 BY: E.S.L.D.C. CHECKED: [Signature] 56-92 SHEET NO. M-3 OF 20 SHEETS |
| ARCHITECT ELECTRICAL ENGINEER STRUCTURAL ENGINEER CIVIL ENGINEER | Charles D. Wright ELECTRICAL ENGINEER CIVIL ENGINEER | CONTRACTOR TO VERIFY ALL DIMENSIONS AT THE JOB | |



FOR CONTINUATION OF ALL PIPING
AT MATCH LINE SEE SHEET M-2

J.C. STA. 3+11
TOTAL 374.80

4" COMPOUND WATER METER SERVICE
AND 6" OFF-SITE WATER MAIN EXTENSION
IS NOT PART OF THIS CONTRACT. THE ABOVE
ITEMS WILL BE ARRANGED FOR AND PAID
FOR DIRECTLY BY THE LA PUENTE UNION
HIGH SCHOOL DISTRICT
P.O.C.

PRESSURE REDUCING STATION
ABOVE GRADE SEE DETAIL M4
E

CHAIN LINK FENCE

6" WATER MAIN - 110 TO 145 PSI
MILLSICITO WATER CO.

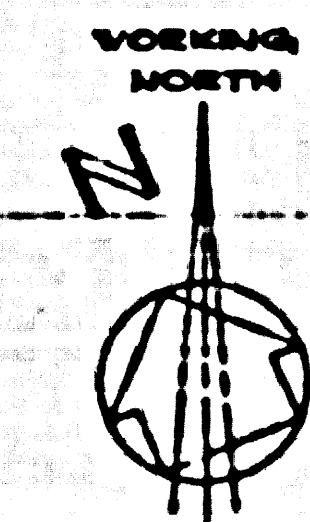
6" GAS SERVICE LINE TO BE INSTALLED
BY 80 CALIF GAS CO. CONTRACTOR
(SMALL PAY ALL COSTS)

25480

NOTES:
1. FOR PLUMBING NOTES, SYMBOLS AND ABBREVIATIONS SEE SHEET M-3.
2. FOR AREA MAP SEE SHEET M-2.
3. FOR SEWER PROFILE SEE SHEET M-4. (PAGE C)
CONTRACTOR TO VERIFY ALL DIMENSIONS AT THE JOB

P.C. 4579
PAGE 4

PLUMBING PLOT PLAN — AREA 'C'
SCALE: 1" = 30'-0"



Arthur J. Rendon
ARCHITECT

Robert D. Wright
MECHANICAL ENGINEER

ELECTRICAL ENGINEER

STRUCTURAL ENGINEER

CIVIL ENGINEER

KISTNER, WRIGHT & WRIGHT
ARTHUR J. RENDON & LEWIS K OSBORN, ASSOCIATES
ARCHITECTURE - ENGINEERING
LOS ANGELES, CALIFORNIA

10/13/57 APPROVED
E. Wright

PLUMBING PLOT PLAN - AREA 'C'
LOS ALTOS HIGH SCHOOL
LA PUENTE UNION HIGH SCHOOL DISTRICT
LA PUENTE, CALIFORNIA

DATE
OCT. '57

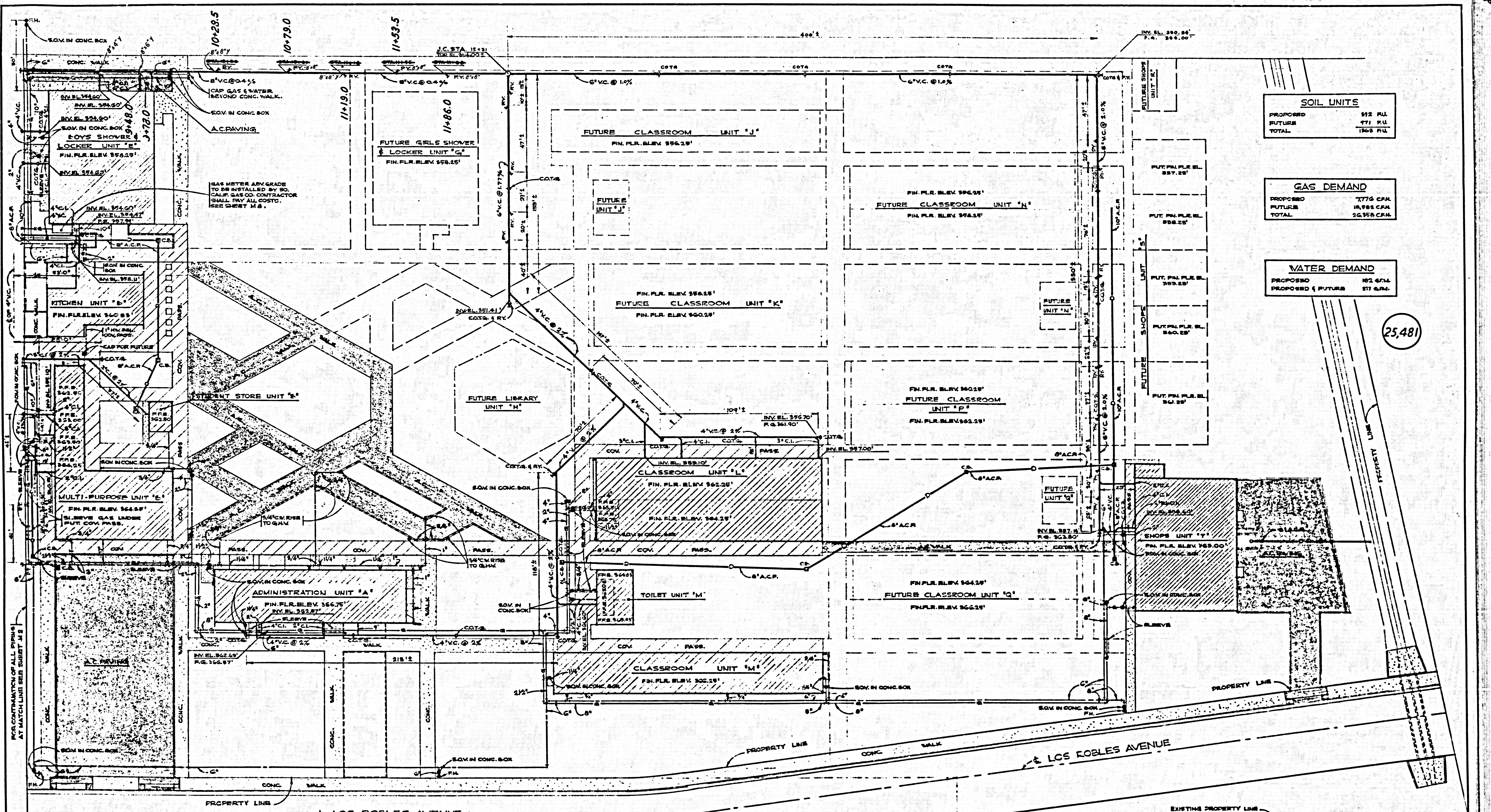
BY
EG:dc

CHECKED BY
23

JOB NO.
56-95

SHEET NO.
M2

OF 120 SHEETS



| SOIL UNITS | |
|------------|-----------|
| PROPOSED | 192 F.U. |
| FUTURE | 471 F.U. |
| TOTAL | 1263 F.U. |

| GAS DEMAND | |
|------------|------------|
| PROPOSED | 7776 CFM |
| FUTURE | 18,988 CFM |
| TOTAL | 26,764 CFM |

| WATER DEMAND | |
|-------------------|---------|
| PROPOSED | 182 GPM |
| PROPOSED & FUTURE | 217 GPM |

(25,481)

PLUMBING PLOT PLAN - AREA 'A'
SCALE 1" = 30'

BENCH MARK
S.E. CORNER OF NORTH 4th & EAST OF CLAY RETURN @ N.E. COR. OF GALE AVENUE & VALENCIA AVENUE
ELEVATION 324.835'

NOTES:
1. FOR PLUMBING NOTES, SYMBOLS AND ABBREVIATIONS SEE SHEET M3.
2. FOR AREA MAP SEE SHEET M5
3. FOR SEWER PROFILES SEE SHEET M4 (PAGE C)
P.C. 4579
PAGE 5

CONTRACTOR TO VERIFY ALL DIMENSIONS AT THE JOB

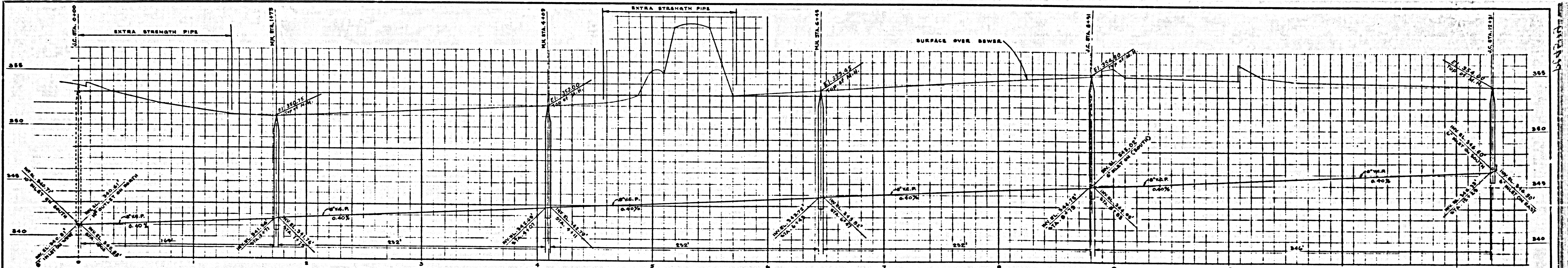
| | |
|---------------------|--|
| ARCHITECT | <i>Arthur J. Rendon</i> MECHANICAL ENGINEER |
| STRUCTURAL ENGINEER | ELECTRICAL ENGINEER |
| | CIVIL ENGINEER |

KISTNER, WRIGHT & WRIGHT
ARTHUR J. RENDON & LEWIS K. OSBORN, ASSOCIATES
ARCHITECTURE - ENGINEERING
LOS ANGELES, CALIFORNIA

W. Wright

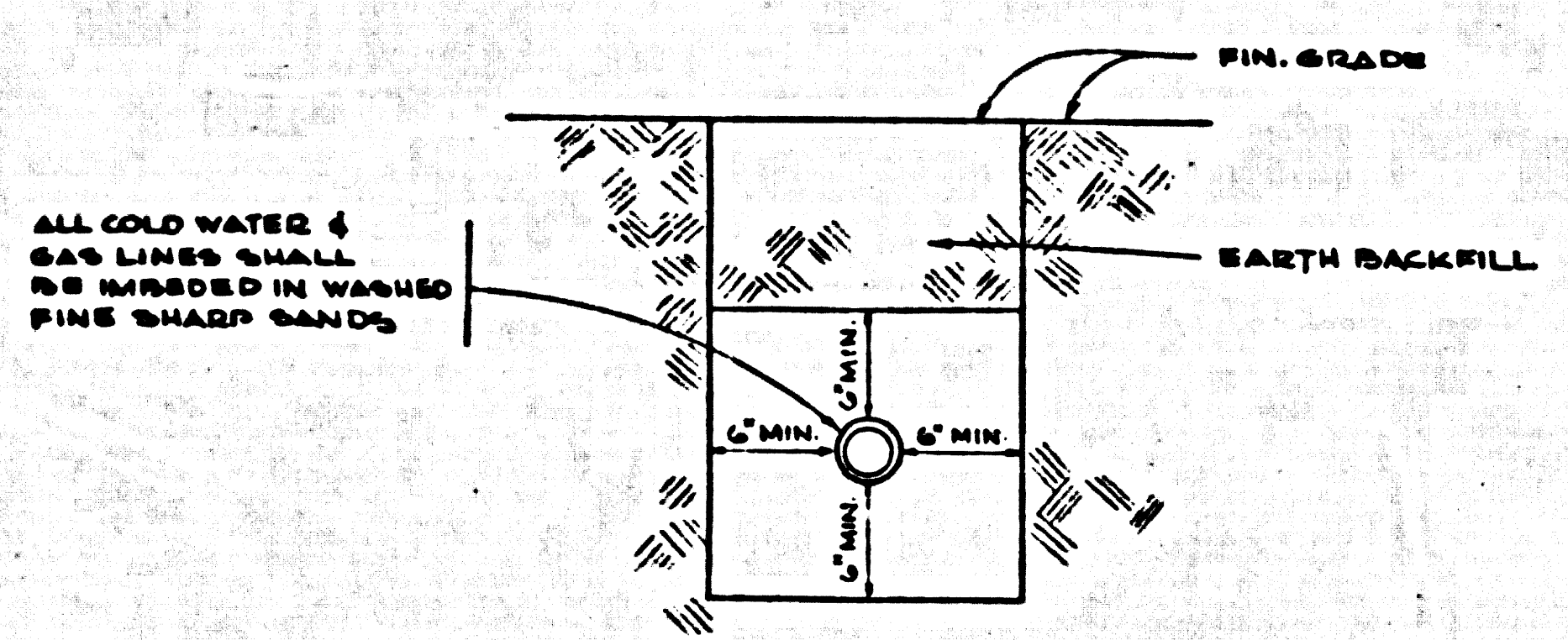
PLUMBING PLOT PLAN - AREA 'A'
LOS ALTOS HIGH SCHOOL
LA PUENTE UNION HIGH SCHOOL DISTRICT
LA PUENTE, CALIFORNIA

| | | | |
|------------|----------|---------------|----|
| DATE | OCT. '57 | SHEET NO. | 11 |
| BY | E. J. C. | OF 120 SHEETS | |
| CHECKED BY | XB | | |
| NO. | 56-93 | | |

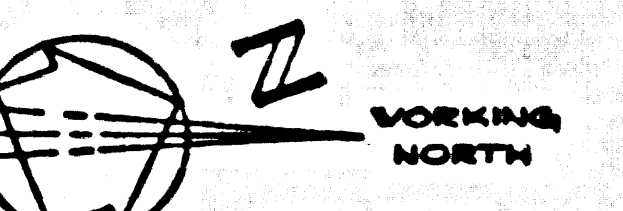
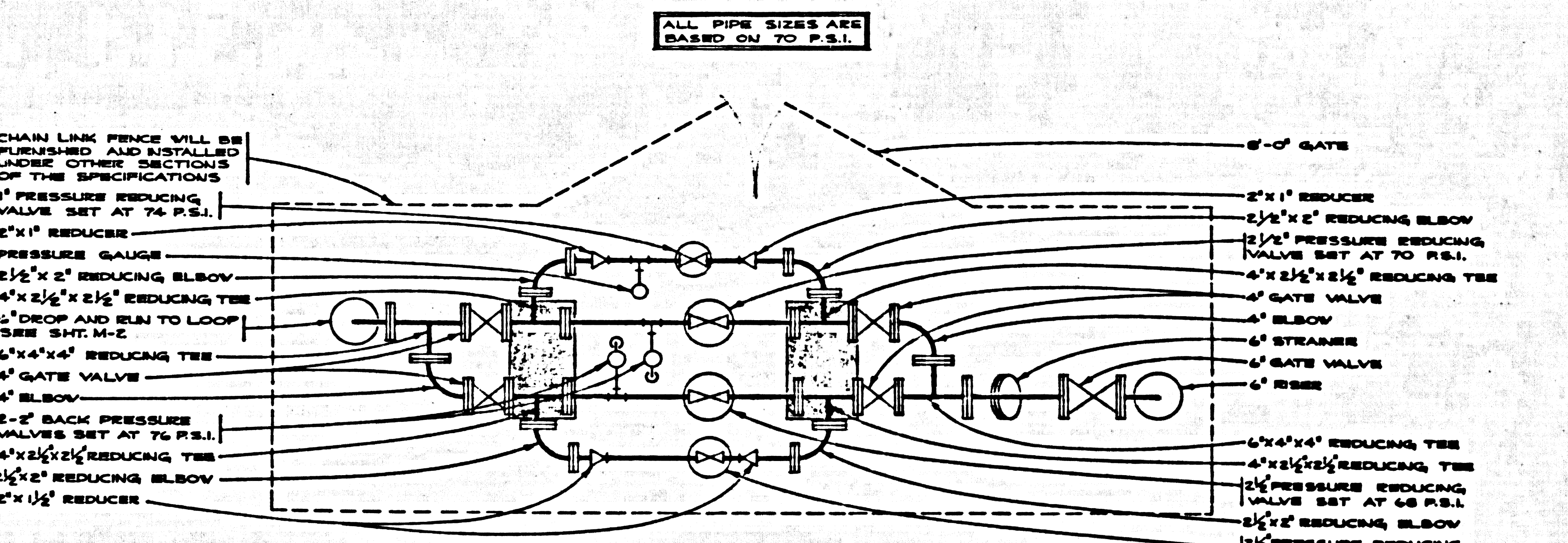


SEWER PROFILE
 SCALE: HORIZONTAL 1" = 40'-0"
 VERTICAL 1" = 4'-0"

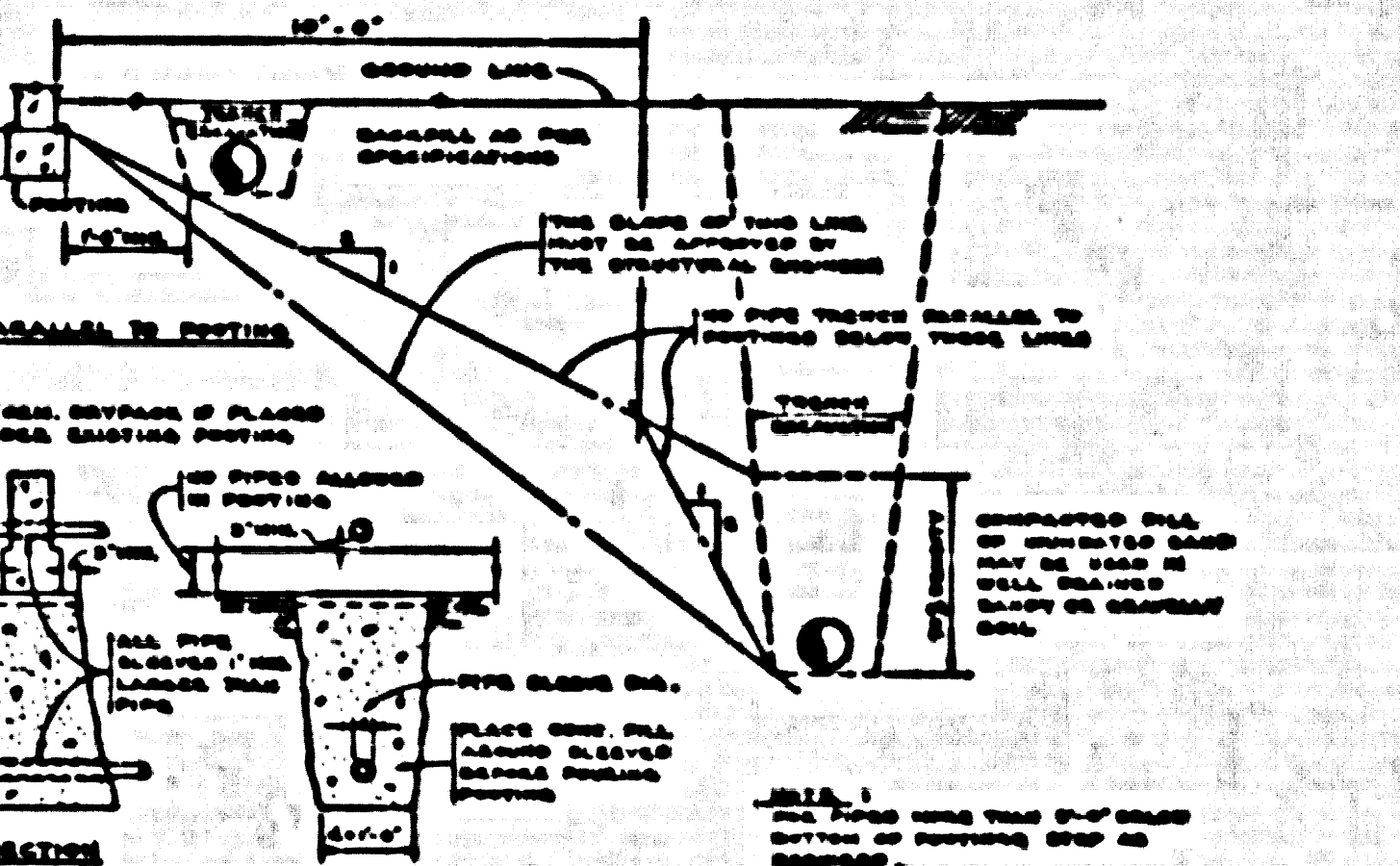
25,482



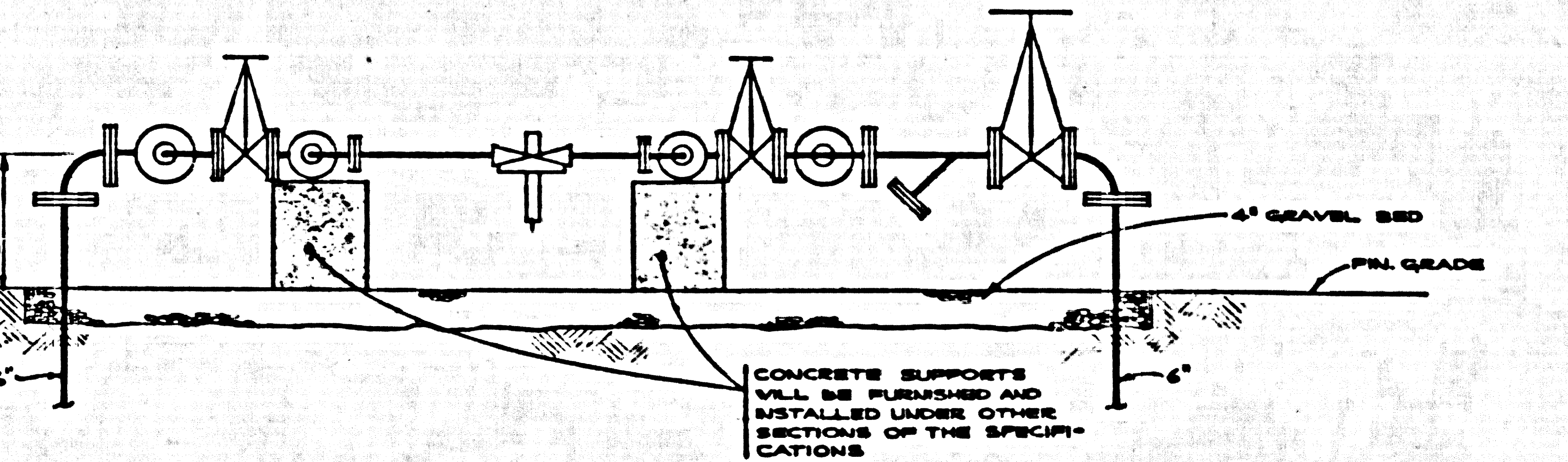
PIPE TRENCH DETAIL (M4)
 NO SCALE



PLAN



TYPICAL PIPE INSTALLATIONS AT CONCRETE FOOTINGS (M4)



ELEVATION

PRESSURE REDUCING STATION DETAIL (M4)
 SCALE: 1/2" = 1'-0"

NOTE:
 FOR PLUMBING NOTES, SYMBOLS & ABBREVIATIONS, SEE SHEET M-2.

Arthur J. Rendon
 ARCHITECT

Charles D. Wright
 MECHANICAL ENGINEER
 ELECTRICAL ENGINEER
 CIVIL ENGINEER

KISTNER, WRIGHT & WRIGHT
 ARCHITECTURE - ENGINEERING
 ARTHUR J. RENDON & LEWIS K OSBORN, ASSOCIATES
 LOS ANGELES, CALIFORNIA

DATE: OCT 2 1957
 APPROVED: *T. May*

CONTRACTOR TO VERIFY ALL DIMENSIONS AT THE JOB

SEWER PROFILE & DETAILS

LA PLUENTE UNION HIGH SCHOOL DISTRICT
 LA PLUENTE, CALIFORNIA

PC. 4579
 PAGE 6

DATE: OCT 2 1957
 BY: EG, DC
 CHECKED BY: *T. May*
 JOB NO. 56-03
 SHEET NO. M4
 OF 120 SHEETS