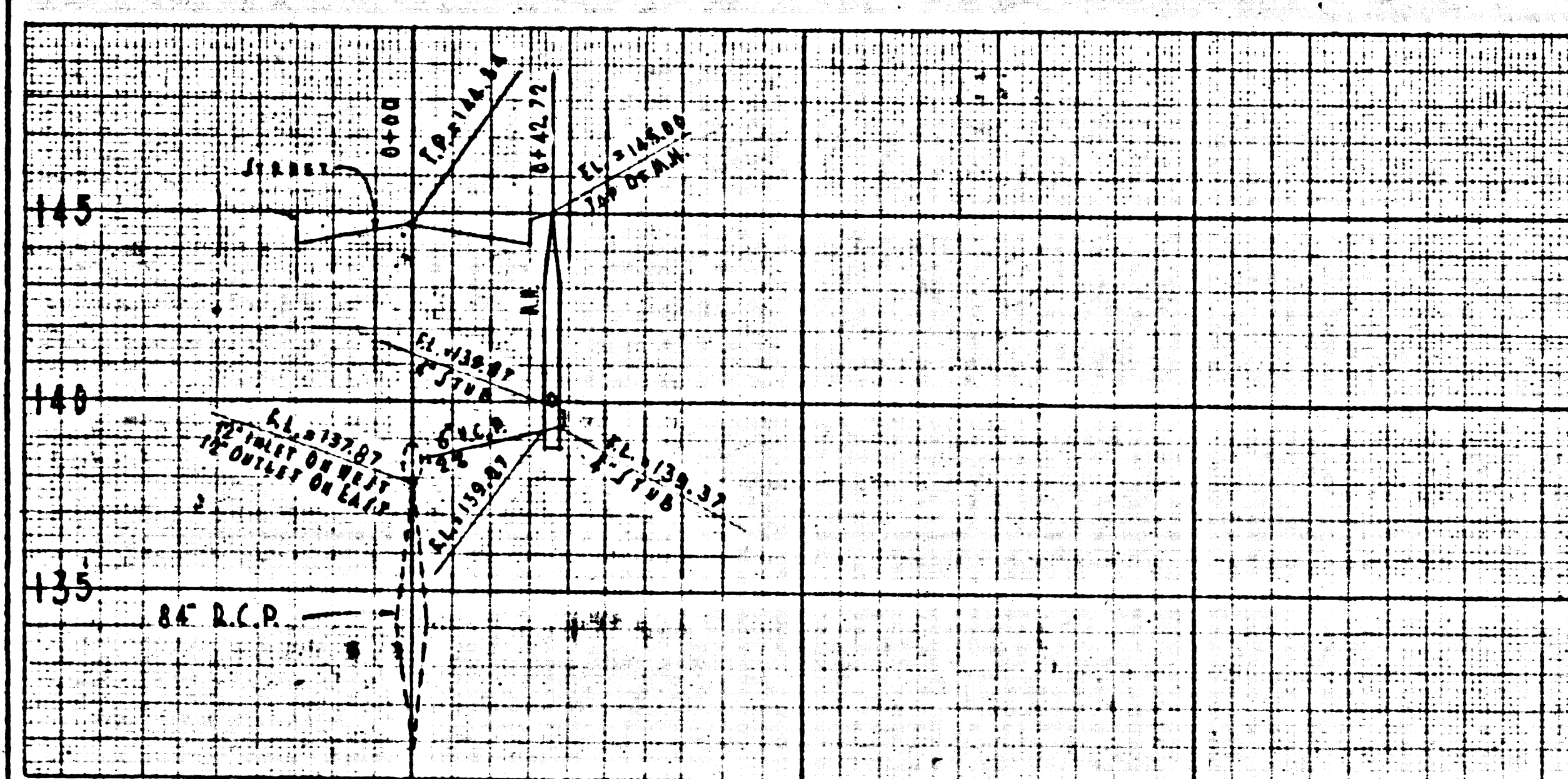


PC 4582 1st



Note:
 No representative of the County Engineer will survey or layout any portion of the work.
 No revisions shall be made in these plans without approval of the County Engineer.

1. Use standard manhole frames and covers, 24" x 24", except as noted.
2. Use standard strength pipe, except as noted.
3. Use cement mortar for all vitrified clay pipe joints.
4. Resurface all trench within paved area to meet Los Angeles County Road Department or California State Highway requirements, in accordance with plans.
5. Encase four feet of sewer at points of interference with piles as per S-119.
6. All structures shall be brick sewer structures S-104, except as noted.
7. For allowable leakage test use Formula No. 1, Spec's, Sec. 54.

Notes:
 Elevations are in feet above U.S.C. & G.S. Sea Level Datum of 1929.
 This Drawing and the data hereon are hereby made a part of the specifications.
 Work shall be constructed according to specifications on file in the office of the County Engineer and shall be prosecuted only in the presence of the County Engineer.

Before work can be started, the contractor must obtain a permit to excavate in County streets, from the L. A. County Road Department, 108 West Second Street and a permit to cover construction inspection and record plans from the County Engineer, Room 324, 253 South Broadway.
 If work is to be done in a state highway, a permit must be obtained from the state of California, Bureau of Highways, 129 South Spring Street.
 Approval of this plan by the County of Los Angeles does not constitute a representation as to the Accuracy of the location of, or the existence or non-existence of, any underground utility, pipe, or structure within the limits of this project.

NOTE:
 THE CONTRACTOR SHALL NOTIFY THE CONSTRUCTION AND STORM DRAIN DIVISION BY TELEPHONE, TELEVISION 9-4747, EXT. 302, AT LEAST 24 HOURS BEFORE STARTING ANY WORK UNDER THIS CONTRACT.

PROFILE ALIGNMENT & GRADE OF
SANITARY SEWERS
 TO BE CONSTRUCTED IN

BANDINI BLVD.

PRIVATE CONTRACT No. 4582

SHEET No. 1 of 1

SCALE: VERT. 1" = 4' HORIZ. 1" = 40'

DATE 10-7-57

PREPARED IN THE OFFICE OF
W. P. NEIL CO. LTD.

BY *Fred Sautter*

Reg. C.E. No. **CE 6392**

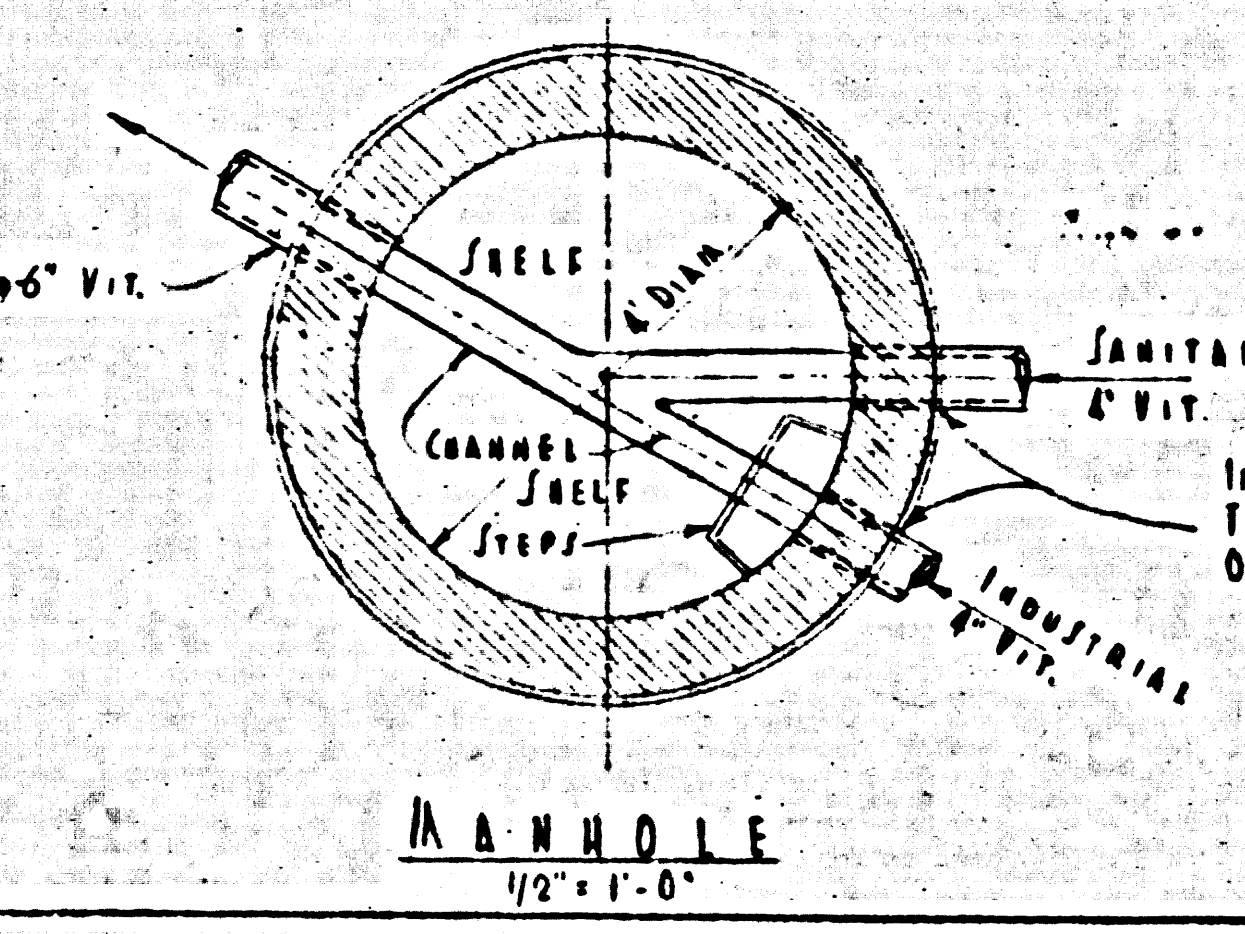
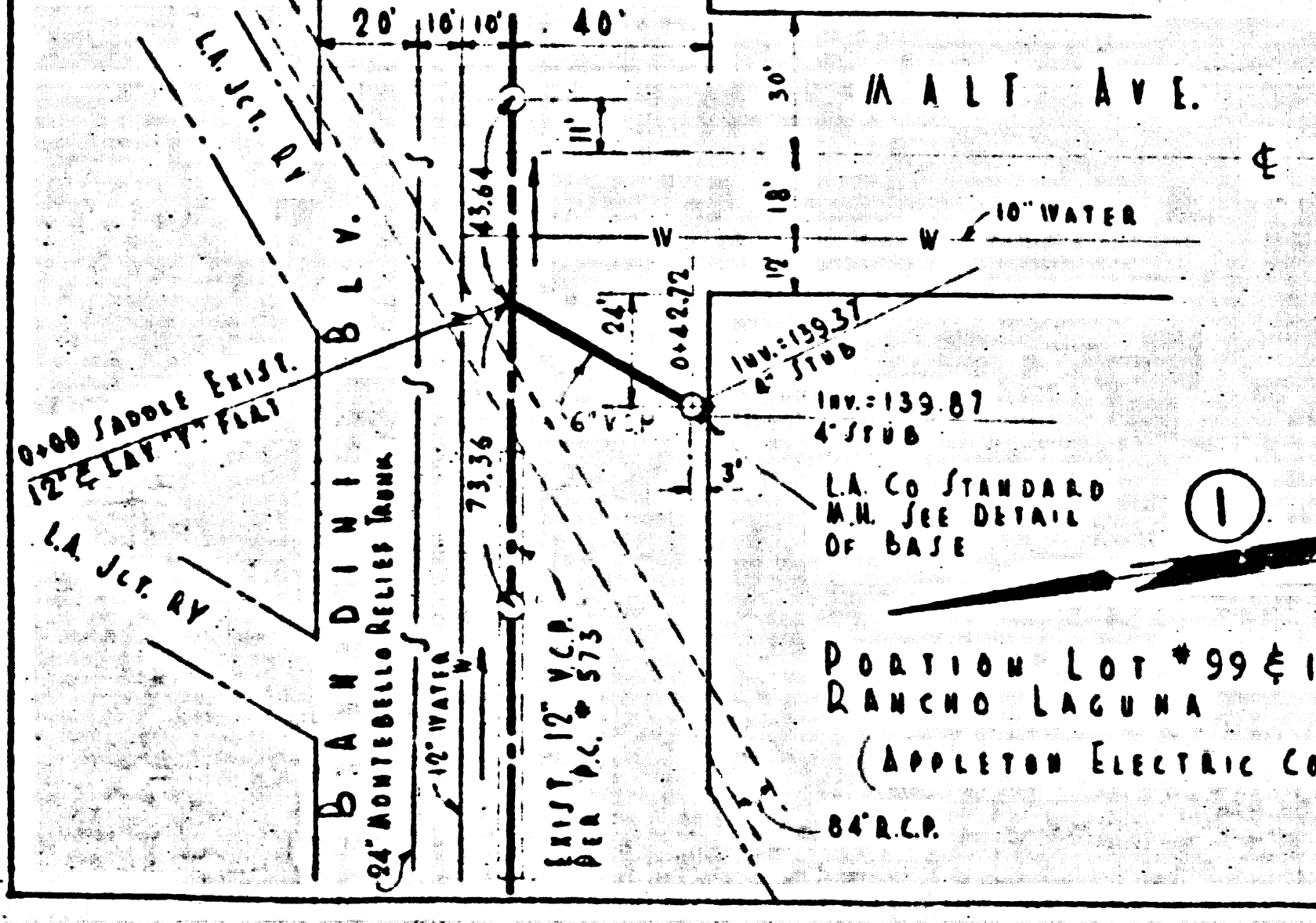
PRIVATE CONTRACT No. 4582
 EAST LOS ANGELES BLDG. DIST. No. C
 W. S. 32, 34, 36, 38, 40, 42, 44, 46, 48, 50, 52
 SHEETS 1 of 1

COUNTY OF LOS ANGELES, CALIFORNIA
 APPROVED, **JOHN A. LAMBE**, County Engineer
 Sanitation Engineer
 APPROVED, **A. M. RAWN**, Chief Engineer
 Office Engineer
 Checked *[Signature]*
 Office of County Engineer Reg. C.E. No. 1212

NO CHANGE FOR CONNECTIONS

APPROVED, INDUSTRIAL WASTE DIVISION
 By *[Signature]* 12/14/57

PC 4582



B.M. L&T S. SIDE BANDINI OPP. WESTERLY R. DRAKE STREET 25'± E. END OF CURB. ELEV. = 136.755

