

LAKWOOD BLDG. DIST. NO. 4.3

J.N. 0871.15
 PROFILE ALIGNMENT AND GRADE OF P.C. 4592

SANITARY SEWERS PAGE 1

TO BE CONSTRUCTED IN
 TRACT NO. 23648 (26,378)

PRIVATE CONTRACT NO. 4592

W.S. 33
 2 SHEETS, 4 PAGES

SCALE: HORIZ. 1" = 40' VERT. 1" = 4'
 JANUARY, 1958

PREPARED IN THE OFFICES OF
 BARCLAY ENGINEERING CO., INC.

By: *Edward L. Ponce*
 REG. C. E. NO. 2753

FOR LEGEND SEE PLAN NO. S-A-64

NOTE:
 GRADES TO WHICH THIS IMPROVEMENT IS TO BE CONSTRUCTED ARE SHOWN ON PLANS AND PROFILE. GRADE POINTS FOR TOP OF CURB, CENTER LINE OF STREETS, OR CENTER LINE OF ALLEYS ARE SHOWN BY CIRCLES ON PROFILES AT ALL POINTS BETWEEN DESIGNATED POINTS THE GRADE SHALL BE ESTABLISHED SO AS TO CONFORM TO A STRAIGHT LINE DRAWN BETWEEN SAID GRADE POINTS.
 ELEVATIONS ARE IN FEET ABOVE U.S.C. & G.S. MEAN SEA LEVEL DATUM OF 1929.
 THIS DRAWING AND THE DATA HEREON ARE HEREBY MADE A PART OF THE SPECIFICATIONS.
 WORK SHALL BE CONSTRUCTED ACCORDING TO SPECIFICATIONS ON FILE IN THE OFFICE OF THE COUNTY ENGINEER AND SHALL BE PROSECUTED ONLY IN THE PRESENCE OF THE COUNTY ENGINEER.
 BEFORE WORK CAN BE STARTED THE CONTRACTOR MUST OBTAIN A PERMIT TO EXCAVATE IN COUNTY STREET FROM THE L.A. COUNTY ROAD DEPT., DIST. ENG. DIV., AND MAKE A DEPOSIT WITH THE COUNTY ENGINEER, ROOM 234 PAN AMERICAN BUILDING, 235 SO. HOUSTON STREET, SUFFICIENT TO COVER THE COST OF CONSTRUCTION INSPECTION AND RECORD PLANS.
 APPROVAL OF THIS PLAN BY THE COUNTY OF LOS ANGELES DOES NOT CONSTITUTE A REPRESENTATION AS TO THE ACCURACY OF THE LOCATION OR OF THE EXISTENCE OR NON-EXISTENCE OF ANY UNDERGROUND UTILITY PIPE, OR STRUCTURE WITHIN THE LIMITS OF THIS PROJECT. THIS NOTE APPLIES TO ALL PAGES.
 IF WORK IS TO BE DONE IN A STATE HIGHWAY, A PERMIT MUST BE OBTAINED FROM THE STATE OF CALIFORNIA, DIVISION OF HIGHWAYS, 120 SOUTH BRINDLEY STREET.

COUNTY OF LOS ANGELES, CALIFORNIA

APPROVED, JOHN A. LAMAR, COUNTY ENGINEER

APPROVED, A. M. BAWN, CHIEF ENGINEER

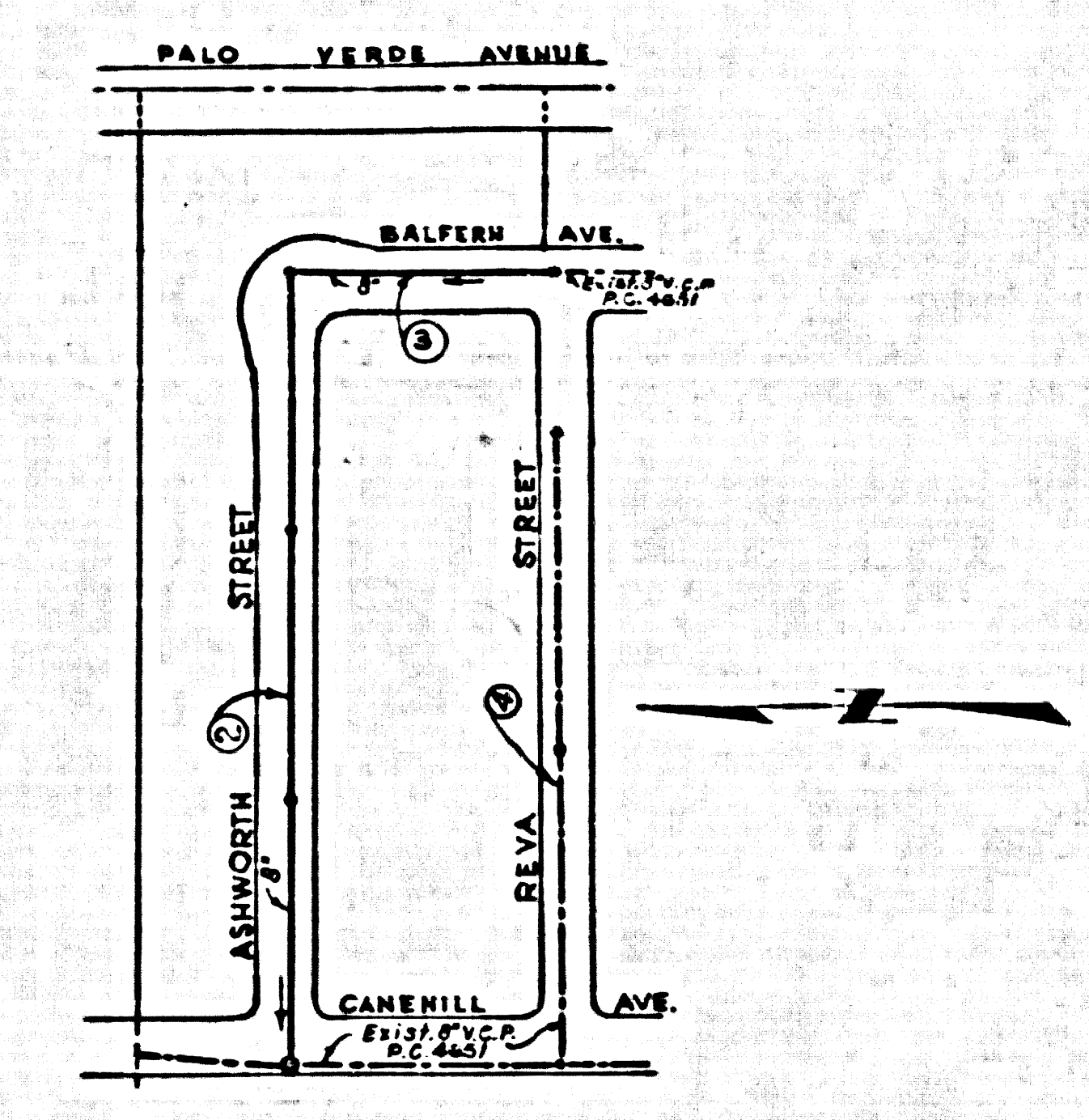
By: *E. L. Hughes*
 SANITATION ENGINEER

By: *A. M. Bawn*
 CHIEF ENGINEER

CHECKED BY: *St. Oude* 2-11-58
 OFFICE OF COUNTY ENGINEER, REG. C. E. NO. 2661

SUBMITTED BY: *John L. Eaton* 2-1-58
 Los Cerritos Regional Engineer, R.C.E. No. 3871

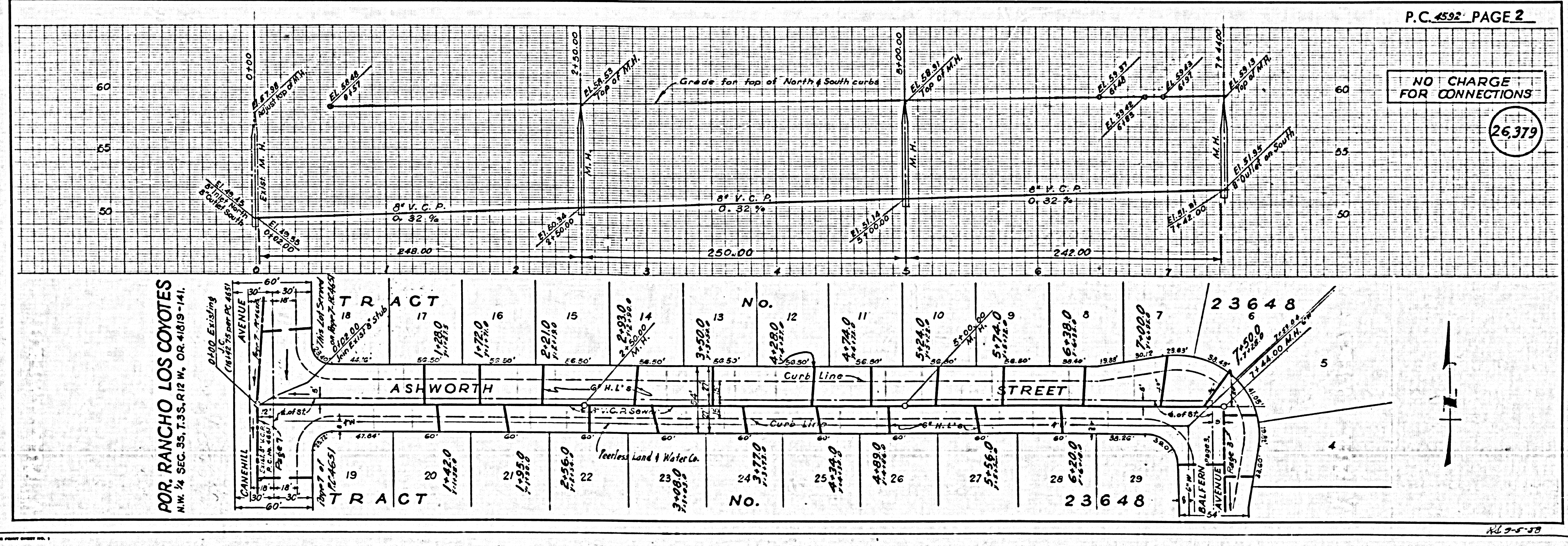
- NOTES
- PROVIDE STAKES ON THE PROPERTY LINE OR PROPERTY LINES PRODUCED AT RIGHT ANGLES TO THE SEWER LINE AT THE CENTER LINE OF EACH MANHOLE.
 - NO REPRESENTATIVE OF THE COUNTY ENGINEER WILL SURVEY OR LAYOUT ANY PORTION OF THE WORK.
 - THE OWNER OR HIS AUTHORIZED REPRESENTATIVE SHALL FURNISH THE COUNTY ENGINEER WITH GRADE SHEETS AND STATION FOR ALL HOUSE LATERALS AND Y BRANCHES AND SHALL PROVIDE STAKES FOR THEM AT THEIR PROPER LOCATIONS WITH STATIONING PLAINLY MARKED. ANY CHANGE IN LOCATION SHALL BE REQUESTED IN WRITING BY THE OWNER OR HIS REPRESENTATIVE. NO REVISIONS SHALL BE MADE IN THESE PLANS WITHOUT THE APPROVAL OF THE COUNTY ENGINEER.
 - USE STANDARD MANHOLE FRAMES AND COVERS, S.A. 117, 24" DIA. - 18" HIGH.
 - USE JOINT COMPOUND OF "WYDOL-LOCK" OR "SPEED-SEAL" FOR ALL V.C.P. JOINTS, PER SP.ECS. SEC. 43, 2c & 4d.
 - RESURFACE ALL TRENCH WITHIN PAVED AREA TO MEET L.A. COUNTY ROAD DEPT. OR CALIF. STATE HIGHWAY DEPT. SPECIFICATIONS IN ACCORDANCE WITH PERMITS.
 - ENCASE FOUR FEET OF SEWER AT POINTS OF INTERFERENCE WITH POLES, S.A. 123, CASE 37.
 - HOUSE LATERALS TO BE CONSTRUCTED WITH INVERTS AT PROPERTY LINE $\frac{1}{2}$ FEET BELOW CURB GRADE UNLESS OTHERWISE NOTED.
 - ALL STRUCTURES SHALL BE BRICK SEWER STRUCTURES, S.A. 104, 24" DIA. - 18" HIGH.
 - FOR ALLOWABLE LEAKAGE TEST USE FORMULA NO. 2, SP.ECS. SEC. 43.
 - MANHOLE TOPS IN UNIMPROVED RIGHTS-OF-WAY TO BE 6" ABOVE FINISHED GRADE.
 - ALL THE LOCATIONS SHOWN FOR EXISTING SUBSTRUCTURES HAVE BEEN TAKEN FROM RECORDS AND THEIR CORRECTNESS AND COMPLETENESS IS IN NO WAY GUARANTEED. IT SHALL BE THE CONTRACTOR'S RESPONSIBILITY ALONE TO DEFINITELY LOCATE ALL UNDERGROUND LINES OF EVERY NATURE WHETHER SHOWN HEREON OR NOT, AND PROTECT THEM FROM DAMAGE. THE CONTRACTOR SHALL BEAR THE TOTAL EXPENSE OF LAMPA TO ANY LINE DAMAGED BY ANY OPERATION IN CONNECTION WITH THE PROSECUTION OF THIS WORK.
 - THE PRIVATE ENGINEER IS TO FURNISH THE HOUSE LATERAL DEPTH AT THE PROPERTY LINE BELOW THE TOP OF CURB ELEVATION FOR EACH HOUSE LATERAL ON THE GRADE SHEET.
- NOTE:
 THE CONTRACTOR SHALL NOTIFY THE CONSTRUCTION AND STORM DRAIN DIVISION BY TELEPHONE, MADISON 9-4747, EXT. 302 AT LEAST 24 HOURS BEFORE STARTING ANY WORK UNDER THIS CONTRACT.
 IF GROUND WATER IS ENCOUNTERED USE METAL PANS AND BASKETS OR "WYDOL-LOCK" OR "SPEED-SEAL" JOINTS FOR V.C.P. PER SP.ECS. SEC. 43.



INDEX MAP
 SCALE " = 100'
 TRACT NO. 23648
 P.C. NO. 4592

NO CHARGE
 FOR CONNECTIONS
E. L. Hughes 2-1-58

Bench Mark: L. & T. W. and Concrete
 Headwall 130' N. & 45' W. of centerline
 intersection Artesia Blvd. & Palo
 Verde Ave.
 S. Y. 1492
 Co. SUR. Precise El. 66.073 1953 Adj.



P.C. 4592 PAGE 2

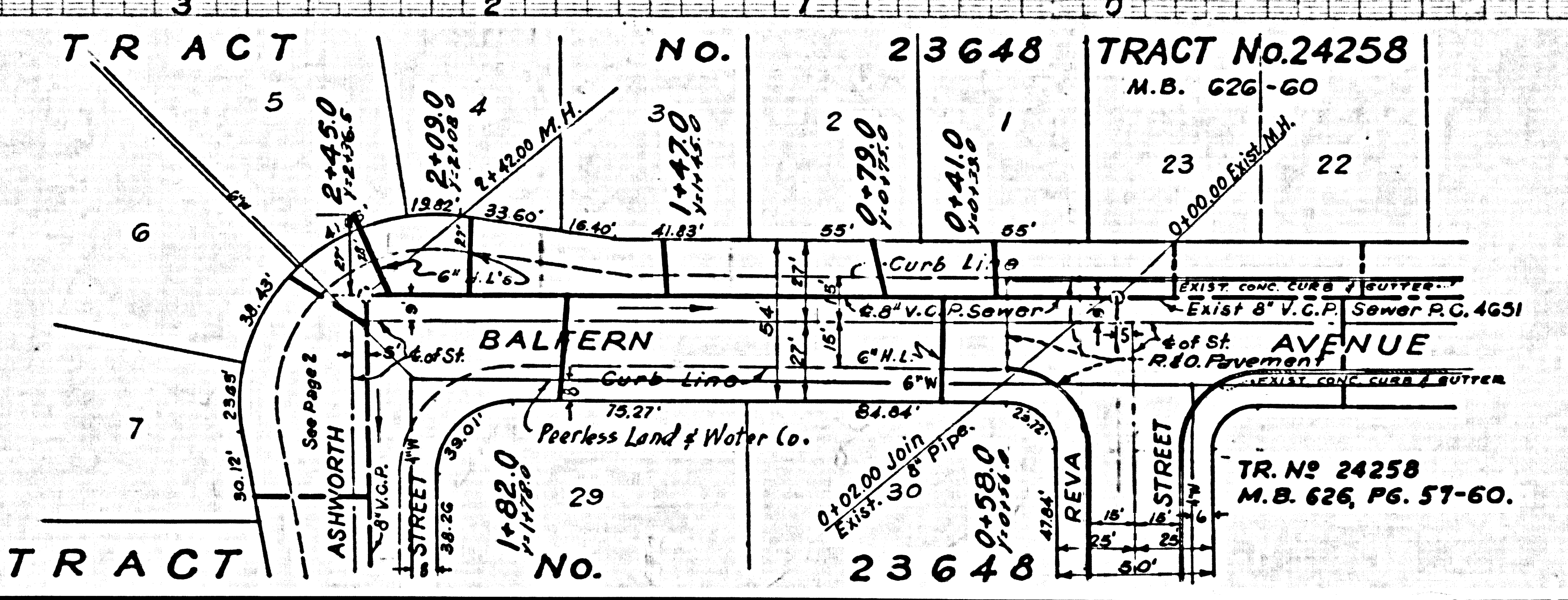
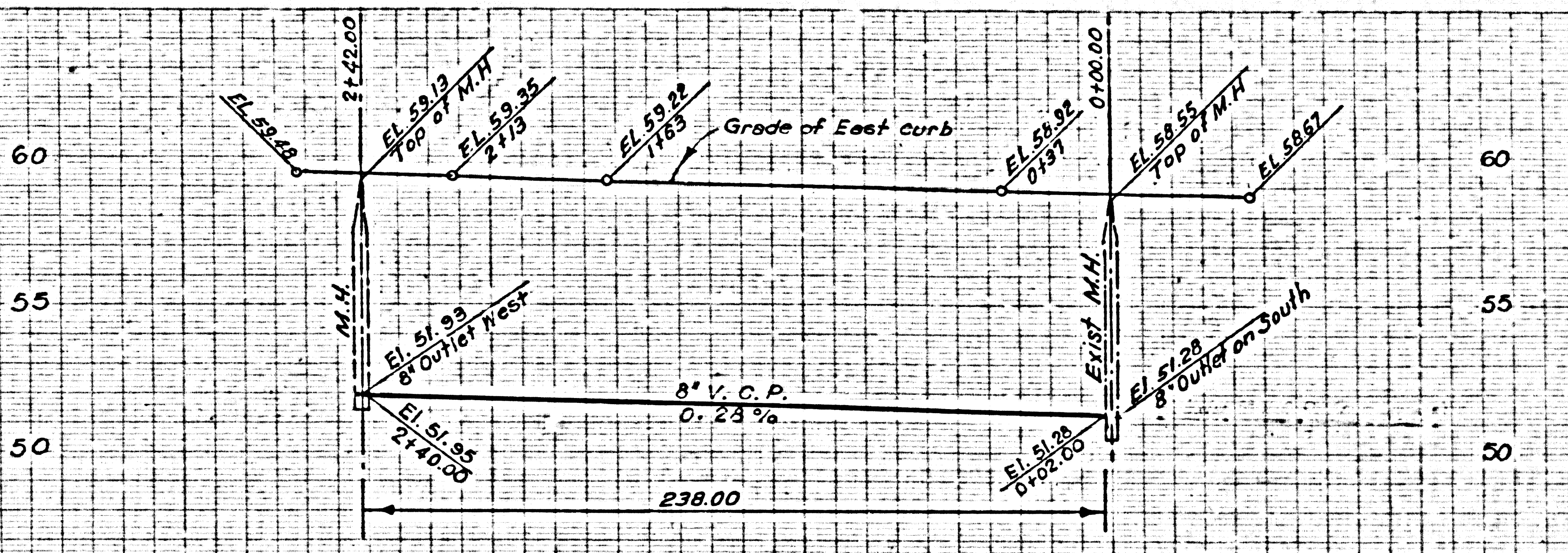
NO CHARGE
 FOR CONNECTIONS
 (26,378)

POR. RANCHO LOS COYOTES
 N.W. 1/4 SEC. 35, T.3S., R.12 W., OR. 41819-141.

KL 2-5-58

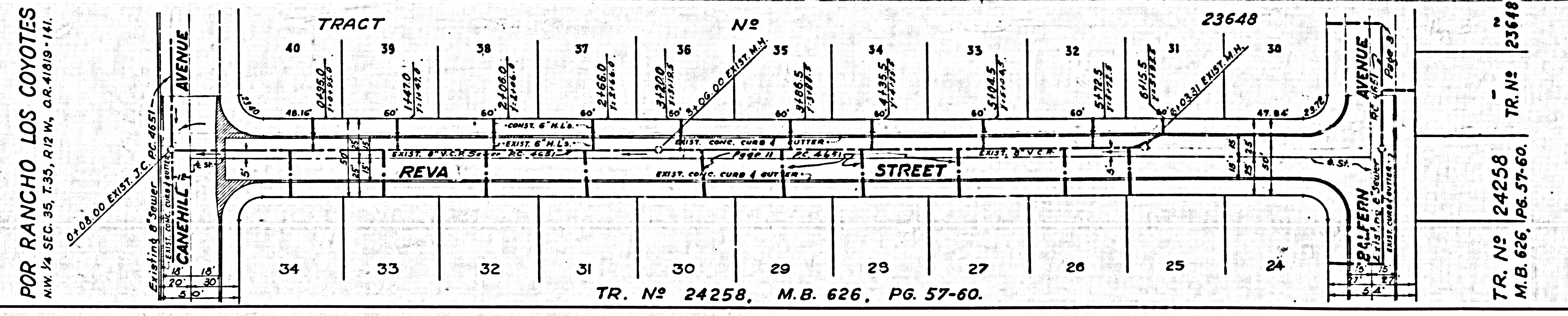
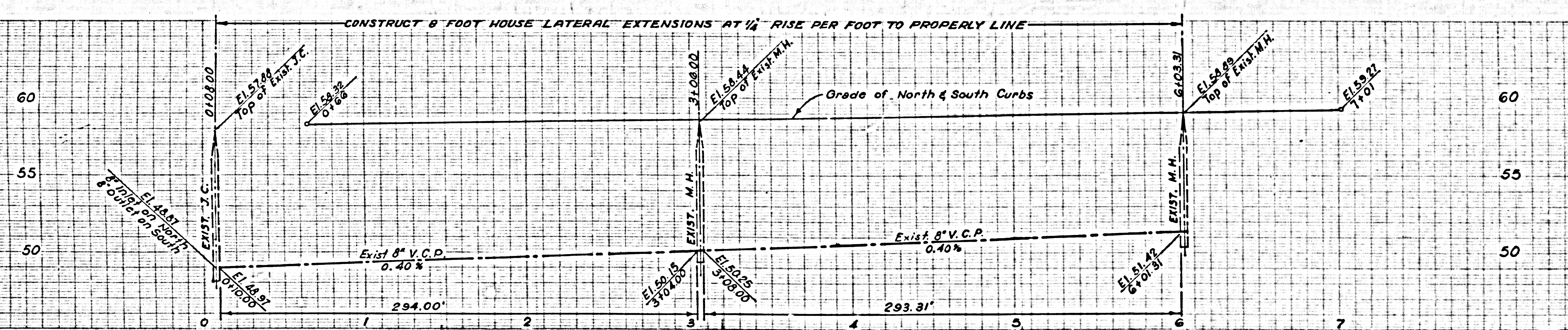
26,360

NO CHARGE FOR CONNECTIONS



26,381

NO CHARGE FOR CONNECTIONS



POR RANCHO LOS COYOTES
NW 1/4 SEC. 35, T.35, R.12 W, Q.R. 41819-141.