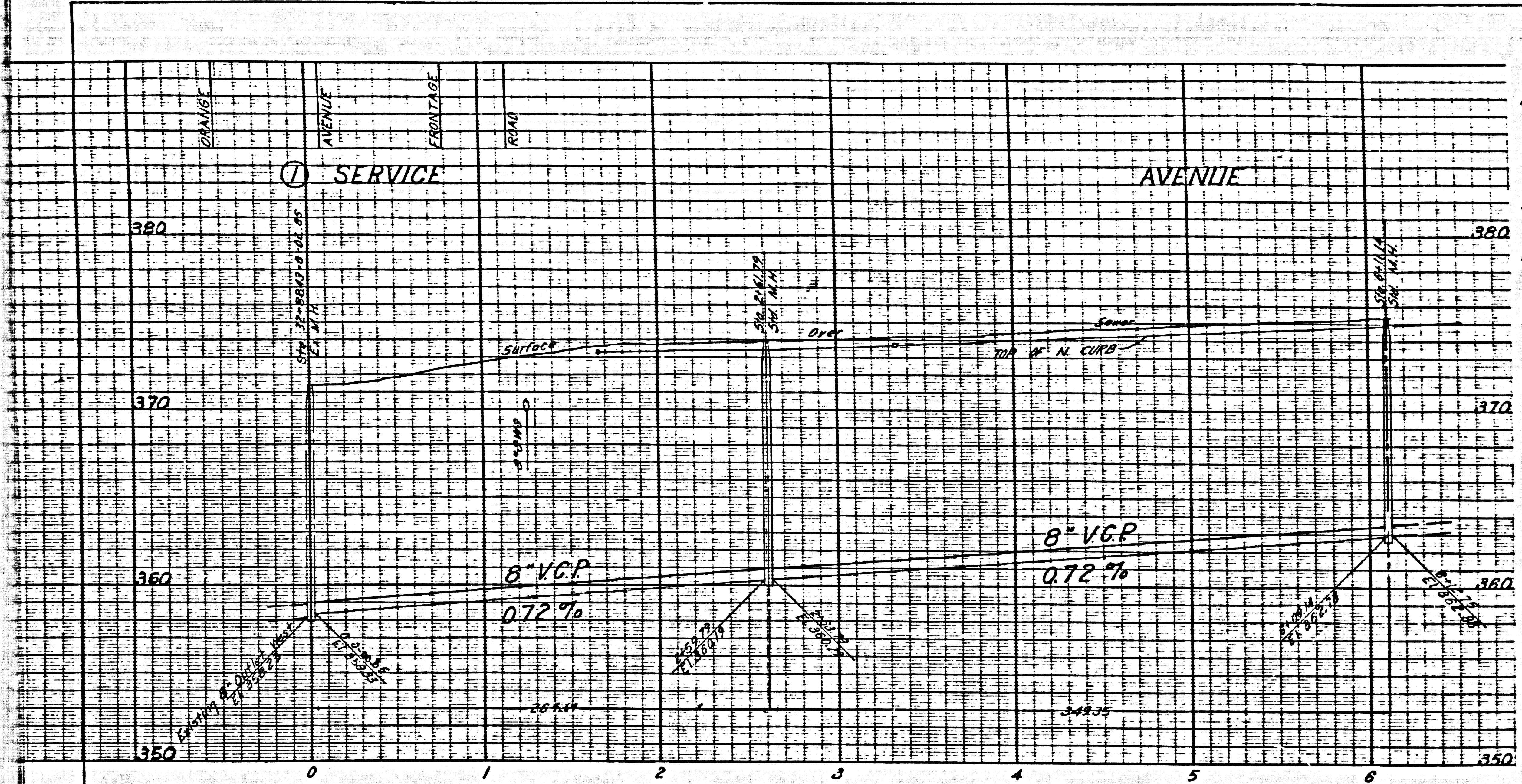


26,753

PLAN AND PROFILE OF SANITARY SEWERS IN

① SERVICE AVENUE BETWEEN ORANGE AVENUE AND SUNSET AVENUE

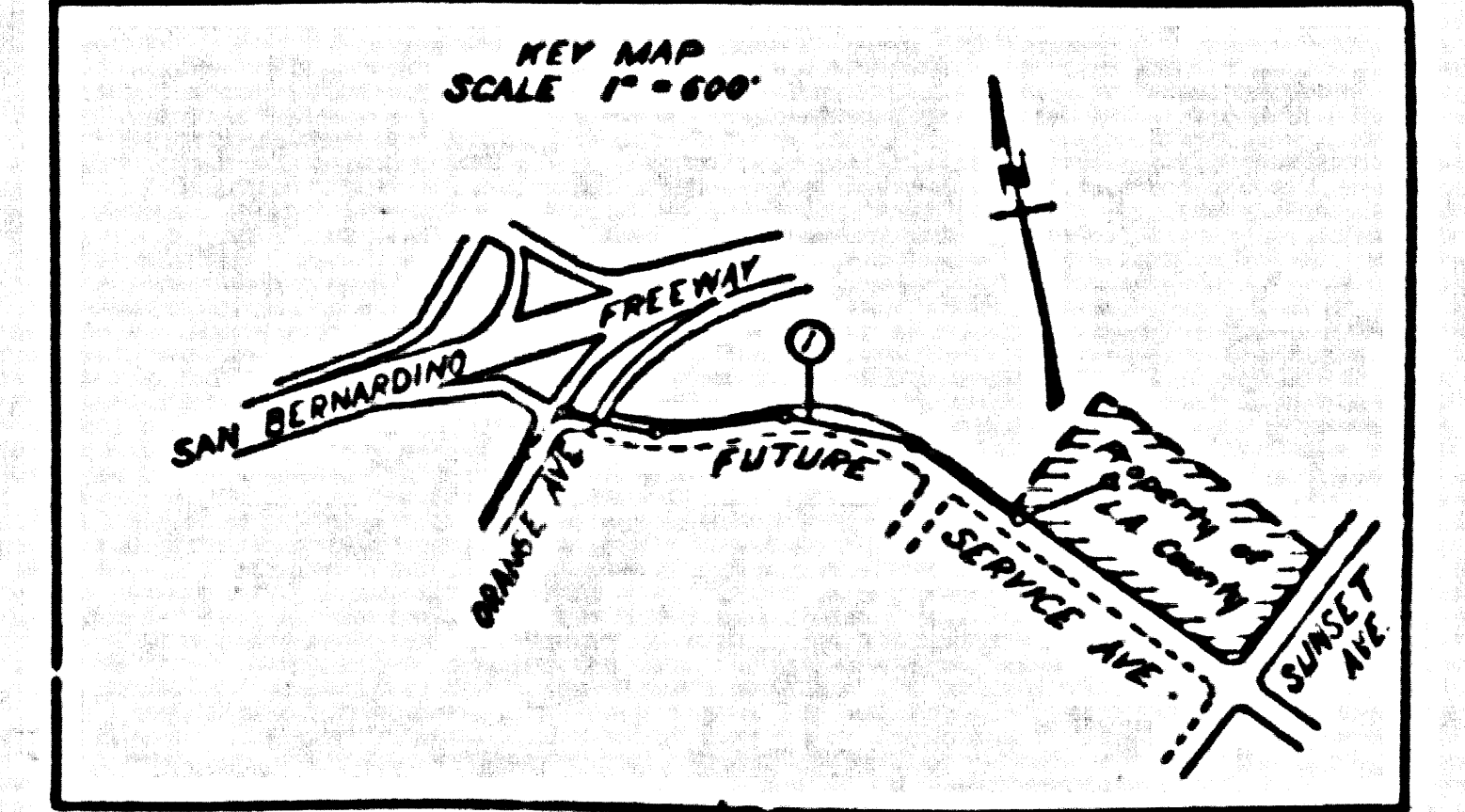
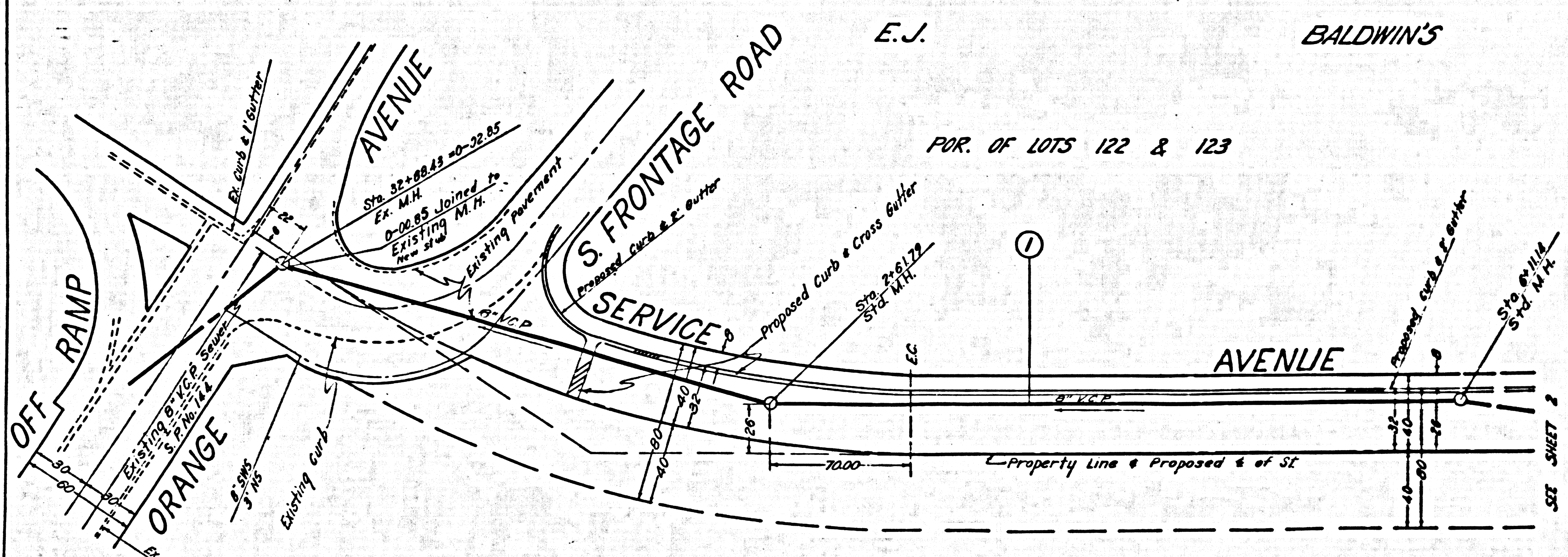


- NOTICE TO CONTRACTORS
1. SPECIFICATIONS: ALL WORK DETAILED ON THESE PLANS SHALL BE CONSTRUCTED IN ACCORDANCE WITH THE SPECIAL SEWER SPECIFICATIONS AND ORDINANCE NOS. 365, 394 & 506 INCLUDING ALL AMENDMENTS ADOPTED THERETO PRIOR TO THE DATE OF APPROVAL OF THESE PLANS.
 2. BEFORE WORK CAN BE STARTED THE CONTRACTOR MUST OBTAIN A PERMIT TO EXCAVATE IN CITY STREETS FROM THE CITY ENGINEER.
 3. ALL SEWERS SHALL BE CONSTRUCTED OF EXTRA STRENGTH VITRIFIED CLAY PIPE UNLESS OTHERWISE SPECIFIED ON THE PLANS.
 4. BEFORE BREAKING INTO ANY EXISTING STRUCTURE, AND BEFORE FINAL ACCEPTANCE OF THIS WORK, COUNTY SANITATION DISTRICT SHOULD BE NOTIFIED IN ORDER THAT REQUIRED INSPECTION MAY BE MADE.
 5. THE ENGINEER HAS INVESTIGATED ALL AVAILABLE RECORDS OF THE CITY AND THE UTILITY COMPANIES INVOLVED AND ALL KNOWN SUBSTRUCTURES ARE SHOWN HEREON. IT SHALL BE THE RESPONSIBILITY OF THE CONTRACTOR TO LOCATE SUBSTRUCTURE SHOWN HEREON AND PROTECT THEM FROM DAMAGE. THE CONTRACTOR SHALL BEAR THE TOTAL EXPENSE OF REPAIR OR REPLACEMENT OF SAID SUBSTRUCTURES DAMAGED BY HIS OPERATION IN CONNECTION WITH THE PROSECUTION OF THIS WORK.
 6. ALL ELEVATIONS SHOWN HEREON ARE ABOVE USGS DATUM.
 7. BENCH MARK DATA: B.M. ELEV. 3750.4 TOP OF BUTTON TYPE C.S. MON. DOWN 16" SUNSET AVENUE & SERVICE RD. 30' WEST OF INTERSECTION S'ELY LOT COR. WEST COVINA ADMIN. CENTER.
 8. STANDARD PLANS SPECIFIED FOR THIS PROJECT:

STD. M.M. & J.C.	S-3-1
STD. FRAME & COVER	S-3-2
CONC. ENCASUREMENT	S-3-4
 9. ALL RESURFACING SHALL BE DONE IN ACCORDANCE WITH THE STANDARD STREET SPECIFICATIONS AND EXCAVATION ORDINANCE OF THE CITY OF WEST COVINA.
 10. USE CEMENT MORTAR FOR ALL VITRIFIED CLAY PIPE JOINTS.

11. SCHEDULE OF RESURFACING:

LINE NO.	STREET	STATION	TYPE
1	ORANGE AVE.	0+00 to 1+00	3" AC MS. ON 6" BASE

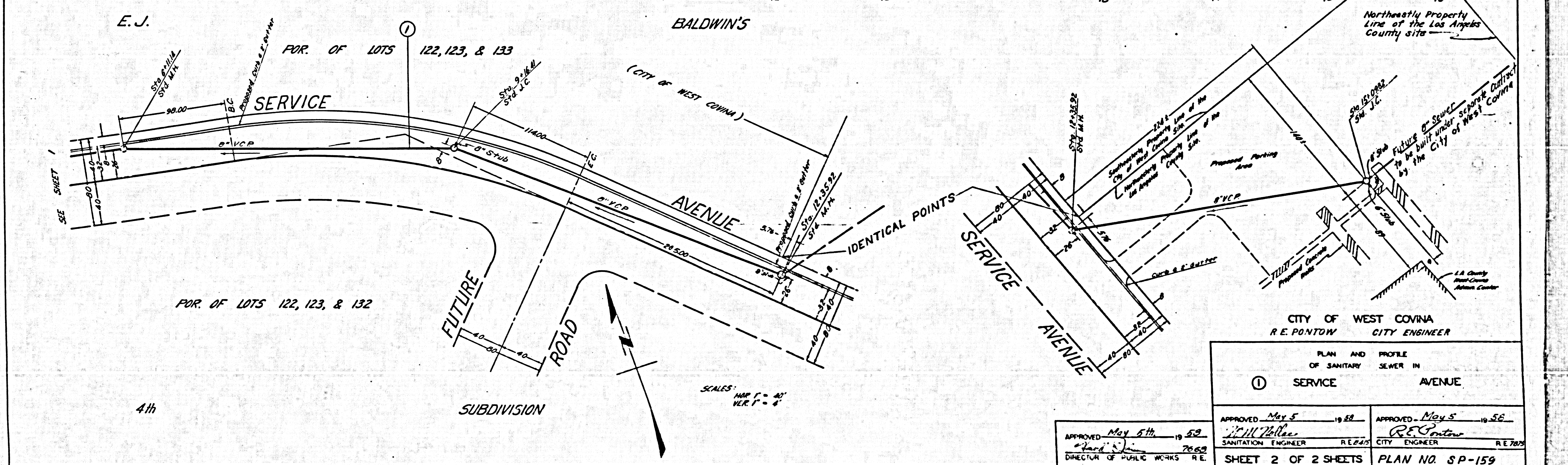
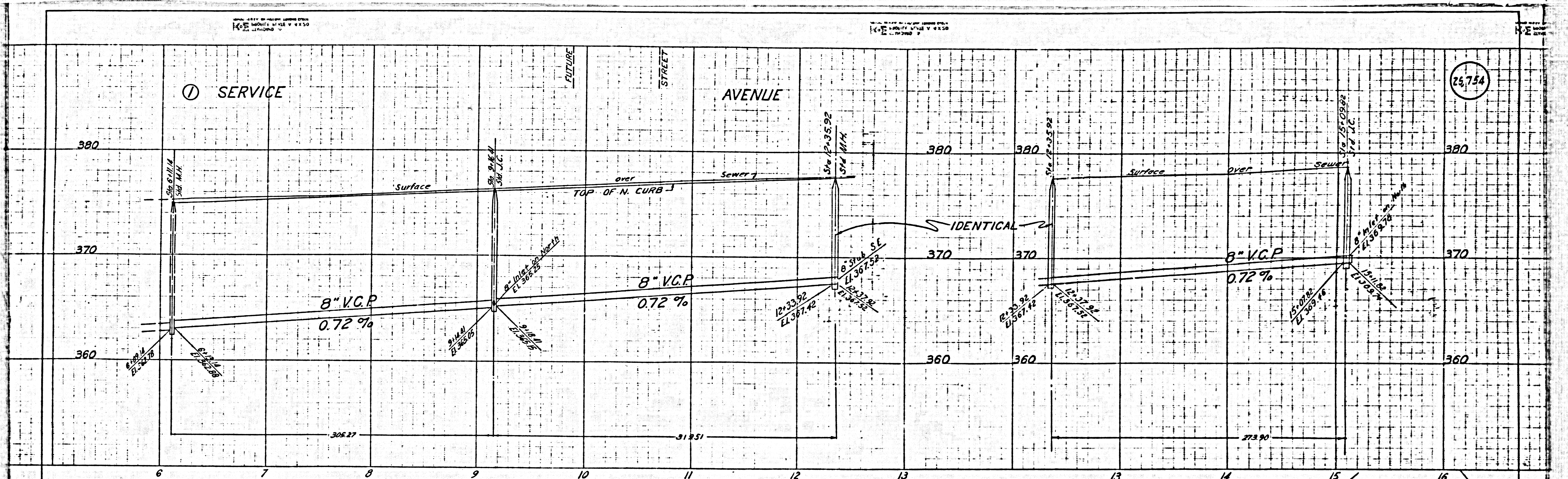


CITY OF WEST COVINA
R.E. PONTOW
CITY ENGINEER

APPROVED <u>May 5th</u> 1958 <u>R.E. Pontow</u> DIRECTOR OF PUBLIC WORKS R.E.	APPROVED <u>May 5th</u> 1958 <u>W.M. Haller</u> SANITATION ENGINEER R.E. 6415
APPROVED LOS ANGELES COUNTY SANITATION DISTRICT NO. 25 A.M. RAYNE, CIVIL ENGINEER BY: <u>R.E. Pontow</u> DATE <u>5-5-58</u>	APPROVED <u>May 5</u> 1958 <u>R.E. Pontow</u> CITY ENGINEER R.E. 7015

PREPARED IN THE OFFICE OF
JOHN A. LAMBIE, COUNTY ENGINEER
P.C. 4554 CAPITAL PROJECT NO. 1170N
APPROVED 5-5-58 DATE 5-5-58
SANITATION DIVISION ENGINEER

SHEET 1 OF 2 SHEETS PLAN NO. SP-159



SEE SHEET 1

E. J.

FOR OF LOTS 122, 123, & 133

FOR OF LOTS 122, 123, & 132

4th

FUTURE ROAD SUBDIVISION

SCALES:
HOR. F = 40'
VER. F = 4'

CITY OF WEST COVINA
R. E. PONTOW
CITY ENGINEER

PLAN AND PROFILE
OF SANITARY SEWER IN

① SERVICE AVENUE

APPROVED May 5th 1958
R. E. Pontow
DIRECTOR OF PUBLIC WORKS

APPROVED May 5 1958
R. E. Pontow
SANITATION ENGINEER

APPROVED May 5 1958
R. E. Pontow
CITY ENGINEER

SHEET 2 OF 2 SHEETS PLAN NO. SP-159

25,754