

INDEX MAP  
TRACT NO 24021  
SCALE 1" = 300'  
P.C. 4595

B.M. 19-4 ELEV. 322.249 FB 1383-9  
LOWER AZUSA RD. & ENGINITA AVE. INT.  
C.S. MON. IN HAND HOLE

NO CHARGE FOR CONNECTIONS  
L. Carter 11-14-57

### TEMPLE CITY BLDG. DIST. NO. 5

- PROVIDE STAKES ON THE PROPERTY LINE OR PROPERTY LINES PRODUCED AT RIGHT ANGLES TO THE SEWER LINE AT THE CENTER LINE OF EACH MANHOLE.
- NO REPRESENTATIVE OF THE COUNTY ENGINEER WILL SURVEY OR LAY OUT ANY PORTION OF THE WORK.
- THE OWNER OR HIS AUTHORIZED REPRESENTATIVE SHALL FURNISH THE COUNTY ENGINEER WITH GRADE SHEETS AND STATION AND PLAINLY MARKED. ANY CHANGE IN LOCATION SHALL BE APPROVED IN WRITING BY THE OWNER OR HIS REPRESENTATIVE.
- NO AMENDMENTS SHALL BE MADE IN THESE PLANS WITHOUT THE APPROVAL OF THE COUNTY ENGINEER.
- USE STANDARD MANHOLE FRAMES AND COVERS, S.A-117, EXCEPT AS NOTED.
  - USE STANDARD STRENGTH PIPE EXCEPT AS NOTED.
  - USE CEMENT MORTAR FOR ALL VITRIFIED CLAY PIPE JOINTS.
  - RESURFACE ALL TRENCH WITHIN PAVED AREA TO MEET L.A. COUNTY ROAD DEPT., OR CALIF. STATE HIGHWAY DEPT. REQUIREMENTS IN ACCORDANCE WITH PERMITS.
  - ENCASE FOUR FEET OF SEWER AT POINTS OF INTERFERENCE WITH POLES, CASE III, 5-8-172.
  - HOUSE LATERALS TO BE CONSTRUCTED WITH INVERTS AT PROPERTY LINE 6" BELOW CURB GRADE, EXCEPT AS NOTED.
  - ALL STRUCTURES SHALL BE BRICK SEWER STRUCTURES, S.A-104, EXCEPT AS NOTED.
  - FOR ALLOWABLE LEAKAGE TEST USE FORMULA NO. 1 SPEC. SEC. 54.
  - MANHOLE TOPS IN UNIMPROVED RIGHTS-OF-WAY TO BE 6" ABOVE FINISHED GRADE.
  - THE PRIVATE ENGINEER IS TO FURNISH THE HOUSE LATERAL DEPTH AT THE PROPERTY LINE BELOW THE TOP OF CURB ELEVATION FOR EACH HOUSE LATERAL, ON THE GRADE SHEET.

NOTE:  
THE CONTRACTOR SHALL NOTIFY THE CONSTRUCTION AND STORM DRAIN DIVISION BY TELEPHONE, MADISON 9-4747, EXT. 302, AT LEAST 24 HOURS BEFORE STARTING ANY WORK UNDER THIS CONTRACT.

TO BE CONSTRUCTED IN  
**TRACT NO 24021** (25,427)

**PRIVATE CONTRACT NO. 4595**

W.S. 44  
1 SHEET 2 PAGES

SCALE: HORIZ. 1" = 40' VERT. 1" = 4'  
AUGUST, 1957  
PREPARED IN THE OFFICES OF

**TREADWELL ENGINEERING CORPORATION**  
By *W.A. Treadwell* REG. C.E. NO. 410

FOR LEGEND SEE PLAN NO. S-A-64

NOTE:  
GRADES TO WHICH THIS IMPROVEMENT IS TO BE CONSTRUCTED ARE SHOWN ON PLANS AND PROFILES. GRADE POINTS FOR TOP OF CURBS, CENTER LINE OF STREETS OR CENTER LINE OF ALLEYS ARE SHOWN BY CIRCLES ON PROFILES. AT ALL POINTS BETWEEN DESIGNATED POINTS THE GRADE SHALL BE ESTABLISHED SO AS TO CONFORM TO A STRAIGHT LINE DRAWN BETWEEN SAID DESIGNATED POINTS.

ELEVATIONS ARE IN FEET ABOVE U.S. AND C.G. SEA LEVEL DATUM OF 1929.

THIS DRAWING AND THE DATA HEREON ARE HEREBY MADE A PART OF THE SPECIFICATIONS.

WORK SHALL BE CONSTRUCTED ACCORDING TO SPECIFICATIONS ON FILE IN THE OFFICE OF THE COUNTY ENGINEER AND SHALL BE PROSECUTED FIRST IN THE PRESENCE OF THE COUNTY ENGINEER.

BEFORE WORK CAN BE STARTED, THE CONTRACTOR MUST OBTAIN A PERMIT TO EXCAVATE IN COUNTY OFFICES FROM THE L.A. COUNTY ROAD DEPT., THE W. 3RD ST. AND MAKE A REPORT WITH THE COUNTY ENGINEER, ROOM 324 PAM AMERICAN BUILDING, 225 SO. BROADWAY BUILDING TO COVER THE COST OF CONSTRUCTION INSPECTION AND RECORD PLANS.

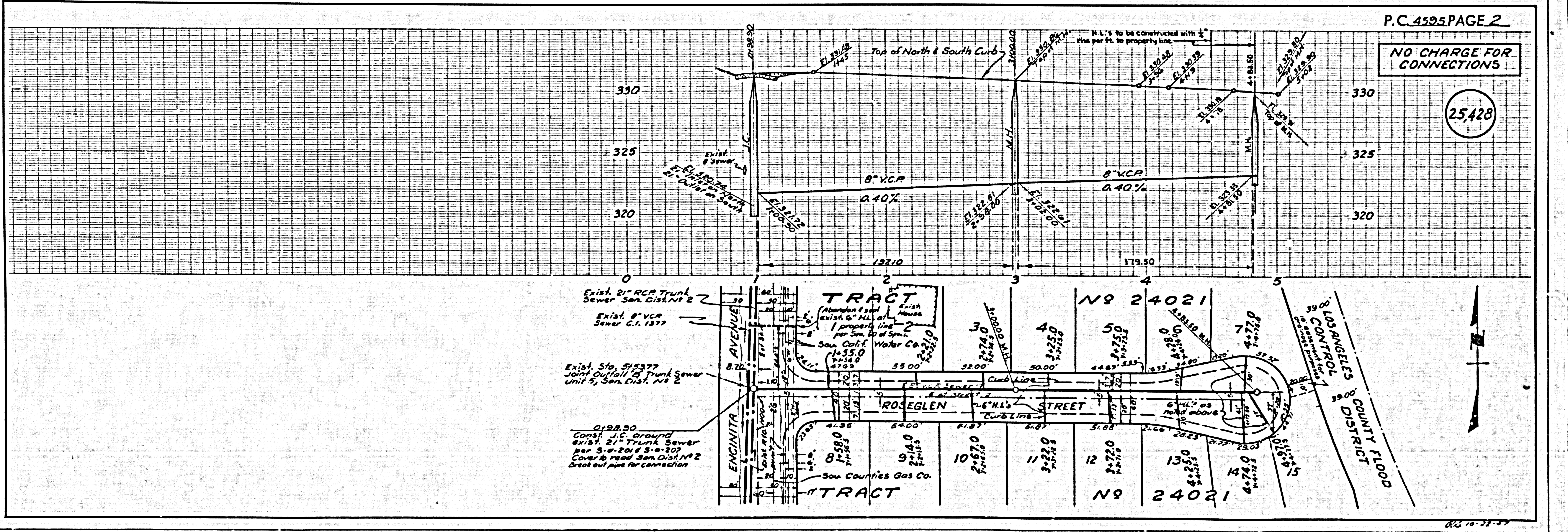
APPROVAL OF THIS PLAN BY THE COUNTY OF LOS ANGELES DOES NOT CONSTITUTE A REPRESENTATION AS TO THE ACCURACY OF THE LOCATION OF OR THE EXISTENCE OR NON-EXISTENCE OF ANY UNDERGROUND UTILITY PIPES OR STRUCTURES WITHIN THE LIMITS OF THIS PROJECT. THIS NOTE APPLIES TO ALL PAGES.

IF WORK IS TO BE DONE IN A STATE HIGHWAY, A PERMIT MUST BE OBTAINED FROM THE STATE OF CALIFORNIA, DIVISION OF HIGHWAYS, 128 SOUTH SPRING STREET.

COUNTY OF LOS ANGELES, CALIFORNIA

APPROVED, JOHN A. LAMME, COUNTY ENGINEER APPROVED, A. M. RAWN, CHIEF ENGINEER

BY *J.A. Lamme* COUNTY ENGINEER BY *A.M. Rawn* CHIEF ENGINEER  
CHECKED BY *R.K. White* 11-14-57  
OFFICE OF COUNTY ENGINEER, BLDG. C. E. NO. 2406



NO CHARGE FOR CONNECTIONS

(25,428)

Exist. 21" RCP Trunk Sewer San. Dist. No 2  
Exist. 8" V.C.P. Sewer C.I. 1377  
Exist. Sto. 515377 Joint Outfall to Trunk Sewer Unit 5, San. Dist. No 2  
0198.30 Const. J.C. Ground Exist. 21" Trunk Sewer per S.A-201 & S.A-207 Cover to road San. Dist. No 2 Great out pipe for connection

U. S. & S. 100 50. 104. BLUE PRINT SHEET NO. 1