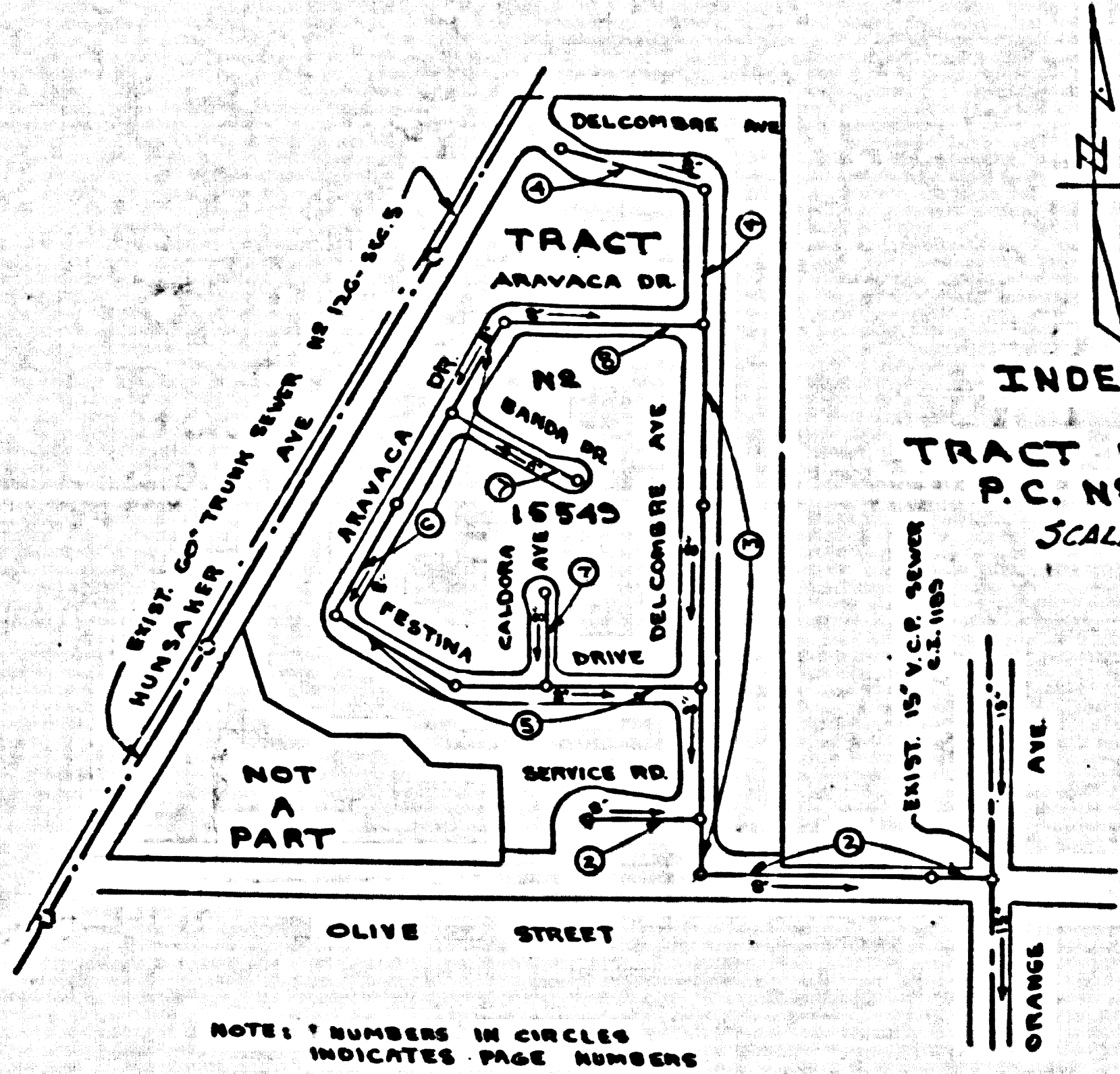


BENCH MARK: BE 51525
 L.I.N. IN W. END OF GAS ISLAND AT SE COR.
 OF OLIVE ST. & ORANGE AVE. 150' E OF
 ORANGE ST. 60' W. OF OLIVE.
 E.I. 66.707
 1855 ADJ. (BELLFLOWER QUAD)



INDEX MAP
 TRACT NO 15549
 P.C. NO 4597
 SCALE 1" = 300'

CONNECTION CHARGES
 AS INDICATED
H. Cooper 12-27-57

PARAMOUNT BLDG. DIST. NO. 4.04

- NOTES
- PROVIDE STAKES ON THE PROPERTY LINE OR PROPERTY LINES PRODUCED AT RIGHT ANGLES TO THE SEWER LINE AT THE CENTER LINE OF EACH MANHOLE.
 - NO REPRESENTATIVE OF THE CITY ENGINEER WILL SURVEY OR LAYOUT ANY PORTION OF THE WORK.
 - THE OWNER OR HIS AUTHORIZED REPRESENTATIVE SHALL FURNISH THE CITY ENGINEER WITH GRADE SHEETS AND STATION FOR ALL HOUSE LATERALS AND T-BRANCHES AND SHALL PROVIDE STAKES FOR THEM AT THEIR PROPER LOCATIONS WITH SEARCHING PLAINLY MARKED. ANY CHANGE IN LOCATION SHALL BE REQUESTED IN WRITING BY THE OWNER OR HIS REPRESENTATIVE.
 - NO REVISIONS SHALL BE MADE IN THESE PLANS WITHOUT THE APPROVAL OF THE CITY ENGINEER.
 - USE STANDARD MANHOLE FRAMES AND COVERS, S.A.117, EXCEPT AS NOTED.
 - USE STANDARD STRENGTH PIPE EXCEPT AS NOTED.
 - USE CEMENT MORTAR FOR ALL VITRIFIED CLAY PIPE JOINTS.
 - RESURFACE ALL TRENCH WITHIN PAVED AREA TO MEET L.A. COUNTY ROAD DEPT. OR CALIF. STATE HIGHWAY DEPT. REQUIREMENTS IN ACCORDANCE WITH PERMITS.
 - SHOULDER FOUR FEET OF CONCRETE AT POINTS OF INTERFERENCE WITH CURBS, S.A.119.
 - HOUSE LATERALS TO BE CONSTRUCTED WITH INVERTS AT PROPERTY LINE. EXCEPT 8" OR 10" CURB GRADE EXCEPT AS NOTED.
 - ALL STRUCTURES SHALL BE BRICK SEWER STRUCTURES, S.A.104, EXCEPT AS NOTED.
 - FOR ALLOWABLE LEAKAGE TEST USE FORMULA NO. 1.
 - MANHOLE TOPS IN UNIMPROVED HIGHWAYS TO BE 6" ABOVE FINISHED GRADE.
 - THE PRIVATE ENGINEER IS TO FURNISH THE HOUSE LATERAL DEPTH AT THE PROPERTY LINE BELOW THE TOP OF CURB BLEK FOR EACH MANHOLE LATERAL ON THE GRUDGE SHEET.

NOTE:
 THE CONTRACTOR SHALL NOTIFY THE CONSTRUCTION AND STORM DRAIN DIVISION BY TELEPHONE-MADISON 9-4747, EXT. 302, AT LEAST 24 HOURS BEFORE STARTING ANY WORK UNDER THIS CONTRACT.

PROFILE ALIGNMENT AND GRADE OF P.C. 4597
 SANITARY SEWERS PAGE 1
 TO BE CONSTRUCTED IN

TRACT NO 15549 (25,790)

PRIVATE CONTRACT NO. 4597

W.S. 32
 A SHEETS, B PAGES

SCALE: VERT. 1" = 4' HORIZ. 1" = 40' SEPT. 1957

PREPARED IN THE OFFICES OF
 VOORHEIS - TRINDLE - NELSON, INC.
 12092 GARDNER GROVE BLVD.
 GARDEN GROVE, CALIF.

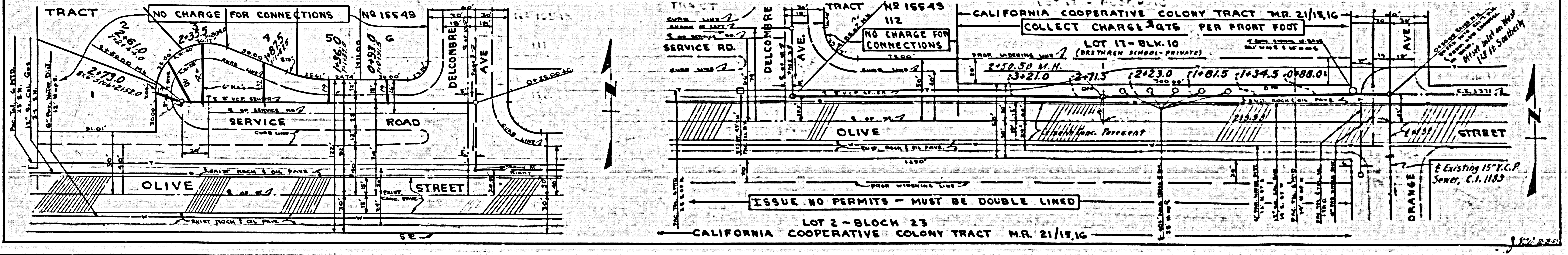
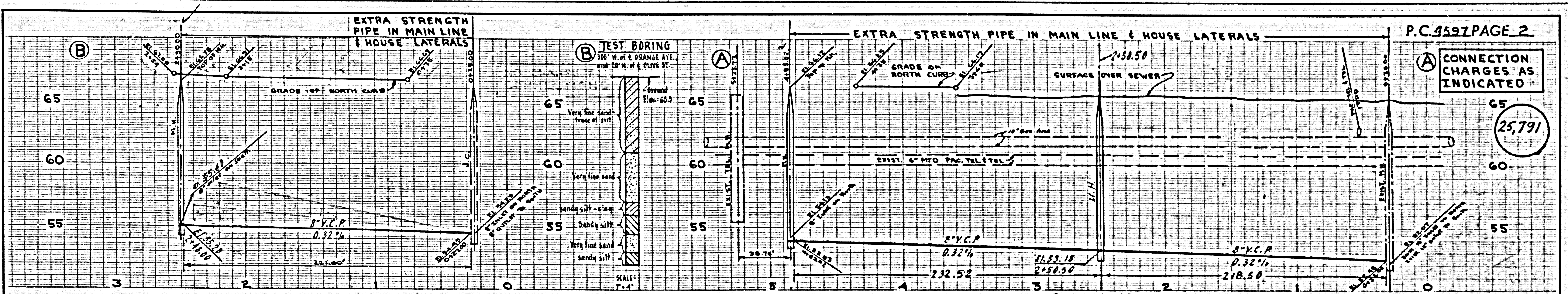
BY *C. P. Nelson*
 REG. C. E. NO. 81781

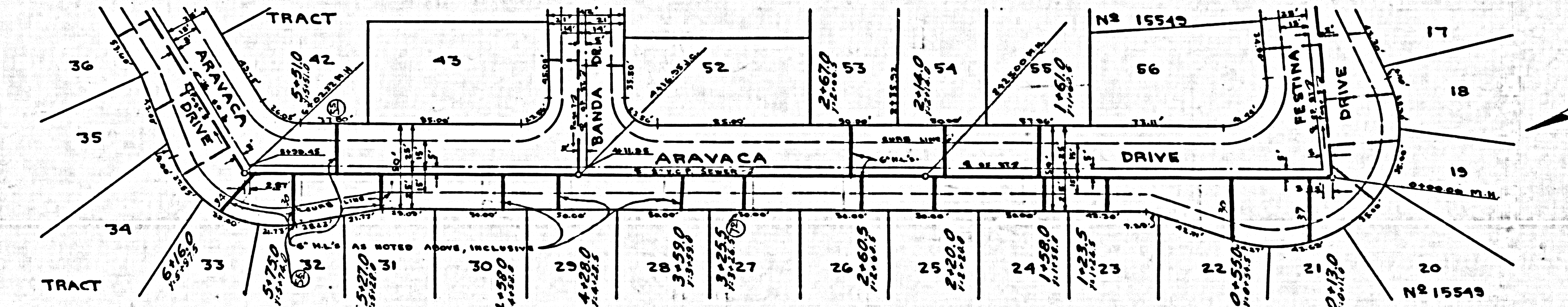
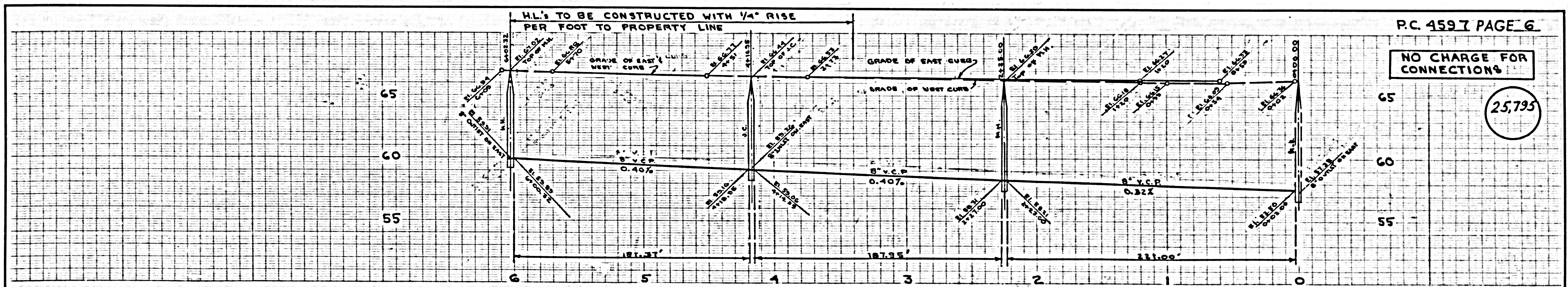
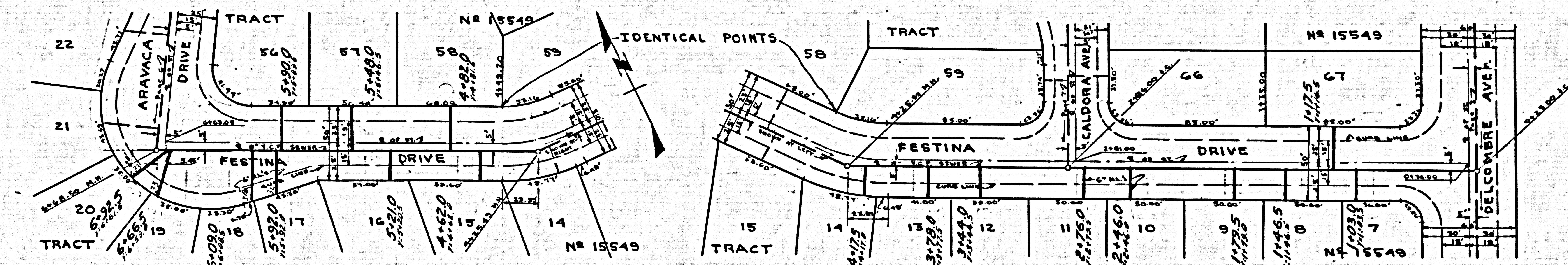
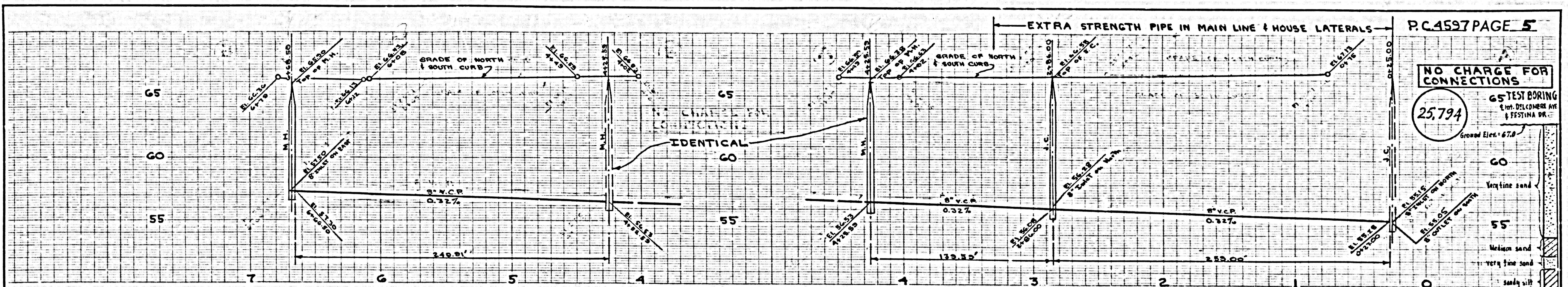
FOR LEGEND SEE PLAN NO. S-A-64

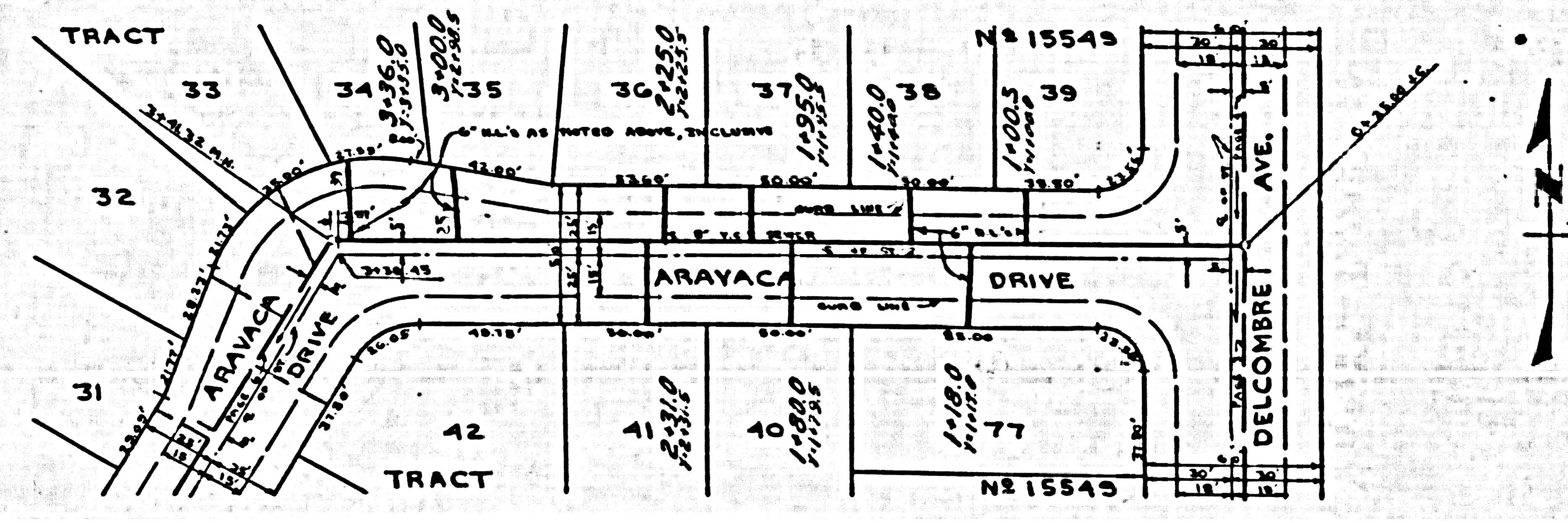
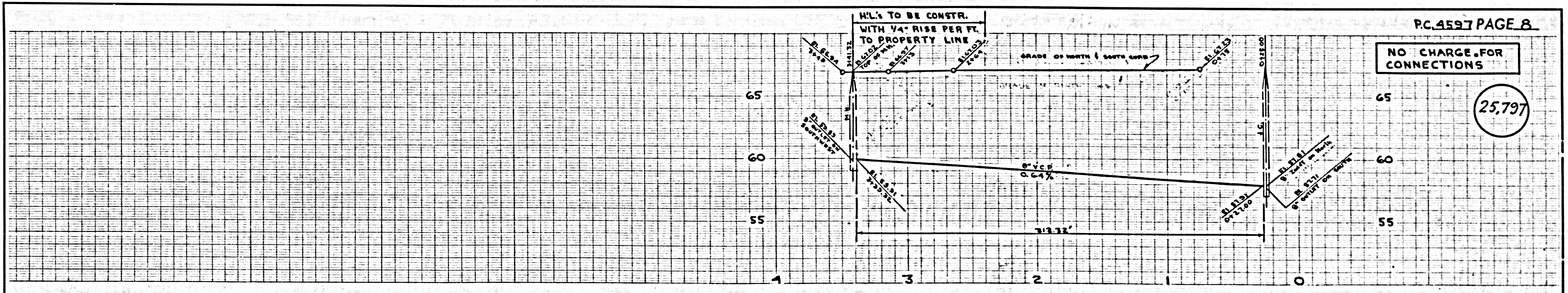
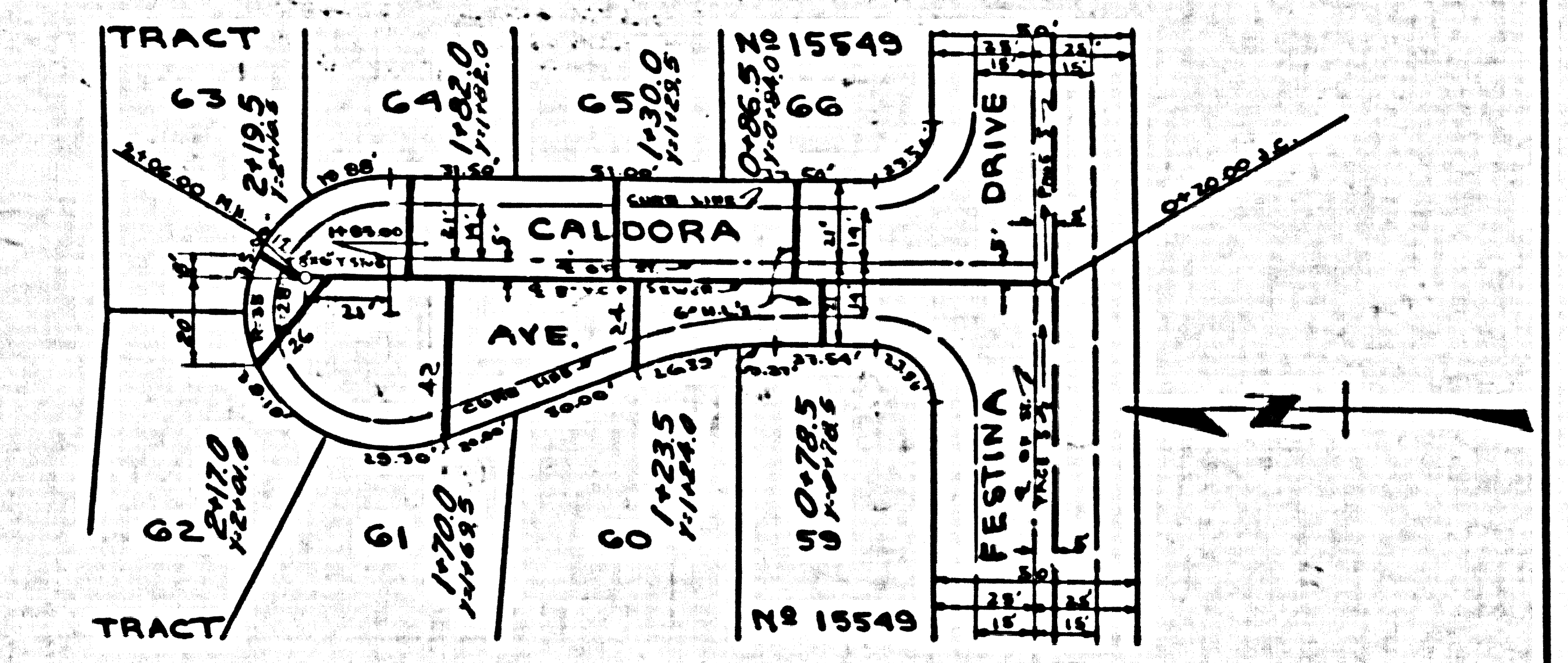
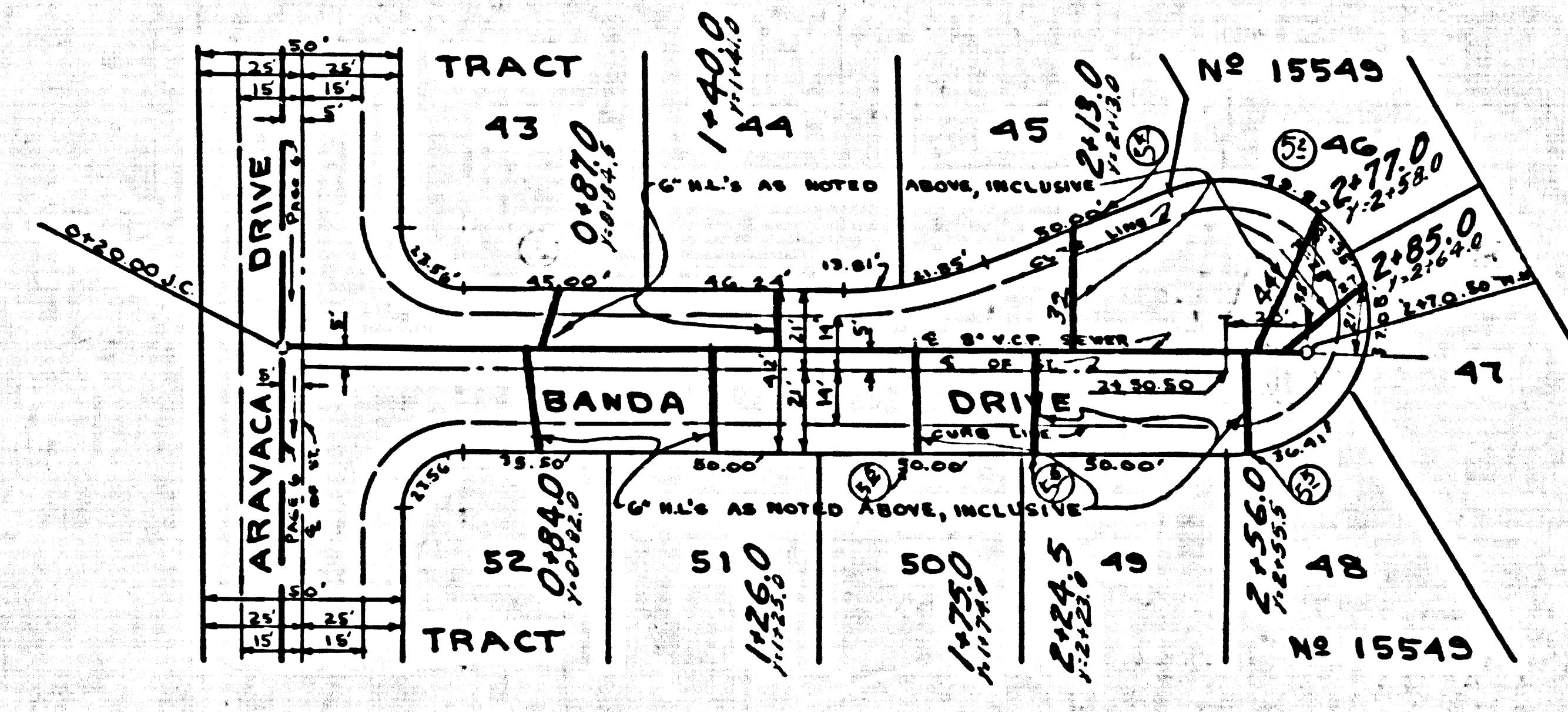
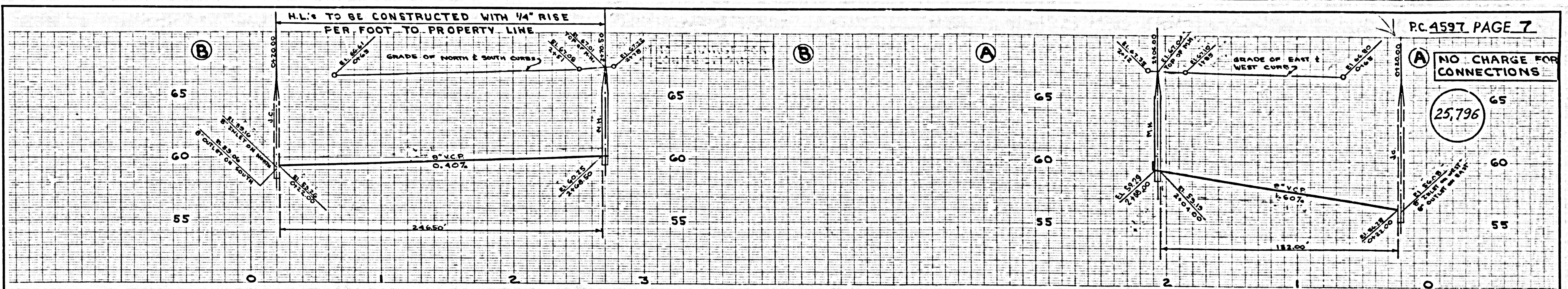
NOTE:
 GRADES TO WHICH THIS IMPROVEMENT IS TO BE CONSTRUCTED ARE SHOWN ON PLANS AND PROFILE GRADE POINTS FOR TOP OF CURB, CENTER LINE OF STREETS, OR CENTER LINE OF ALLEYS ARE SHOWN BY CIRCLES ON PROFILES AT ALL POINTS BETWEEN DESIGNATED POINTS THE GRADE SHALL BE ESTABLISHED SO AS TO CONFORM TO A STRAIGHT LINE BETWEEN SAID DESIGNATED POINTS.
 ELEVATIONS ARE IN FEET ABOVE U.S.C. & G.S. SEA LEVEL DATUM, 1929.
 THIS DRAWING AND THE DATA HEREON ARE HEREBY MADE A PART OF THE SPECIFICATIONS.
 WORK SHALL BE CONSTRUCTED ACCORDING TO SPECIFICATIONS ON FILE IN THE OFFICE OF THE CITY ENGINEER AND SHALL BE PROSECUTED ONLY IN THE PRESENCE OF THE CITY ENGINEER.
 BEFORE WORK CAN BE STARTED, THE CONTRACTOR MUST OBTAIN A PERMIT TO EXCAVATE IN CITY STREETS FROM THE L.A. COUNTY ROAD DEPT. 100 W. 3RD ST. AND MAKE A REPORT WITH THE CITY ENGINEER, ROOM 204 SAN ANTONIO BUILDING 330 SO. BROADWAY SUFFICIENT TO COVER THE COST OF CONSTRUCTION INSPECTION AND RECORD PLANS.
 APPROVAL OF THIS PLAN BY THE CITY OF PARAMOUNT DOES NOT CONSTITUTE A REPRESENTATION AS TO THE ACCURACY OF THE LOCATION OF THE EXISTENCE OR NON-EXISTENCE OF ANY UNDERGROUND UTILITY PIPE, OR STRUCTURE WITHIN THE LIMITS OF THIS PROJECT THE NOTE APPLIES TO ALL PAGES.
 IF WORK IS TO BE DONE IN A STATE HIGHWAY, A PERMIT MUST BE OBTAINED FROM THE STATE OF CALIFORNIA, DIVISION OF HIGHWAYS, 128 SOUTH SPRING STREET.

CITY OF PARAMOUNT, CALIFORNIA

APPROVED, JOHN A. LAMSE, CITY ENGINEER
 APPROVED, A. M. BAWL, CHIEF ENGINEER
 BY *J. A. Lamse* SANITATION ENGINEER
 BY *A. M. Bawl* CHIEF ENGINEER
 CHECKED BY *John J. Esten* - 12-27-57
 OFFICE OF CITY ENGINEER, REG. C. E. NO. 3877







g/21/2011