

TRACT No 24083

PRIVATE CONTRACT NO. 4598

W.S. 28

2 SHEETS, 4 PAGES

26,299

SCALE: VERT. 1" = 10' HORIZ. 1" = 40'

SEPTEMBER 1957

PREPARED IN THE OFFICES OF

BARCLAY ENGINEERING CO., INC.

Edward L. Pearson
REG. C. E. NO. 8783

FOR LEGEND SEE PLAN NO. S-A-64

NOTE:
GRADES TO WHICH THIS IMPROVEMENT IS TO BE CONSTRUCTED ARE SHOWN ON PLANS AND PROFILES. GRADE POINTS FOR TOP OF CURBS, CENTER LINE OF STREET OR CENTER LINE OF ALLEY ARE SHOWN BY CIRCLES ON PROFILES. AT ALL POINTS BETWEEN DESIGNATED POINTS THE GRADE SHALL BE ESTABLISHED SO AS TO CONFORM TO A STRAIGHT LINE DRAWN BETWEEN SAID DESIGNATED POINTS.
ELEVATIONS ARE IN FEET ABOVE M.L.G. & S.E. SEA LEVEL DATUM OF 1929.
THIS DRAWING AND THE DATA HEREON ARE HEREBY MADE A PART OF THE SPECIFICATIONS.
WORK SHALL BE CONSTRUCTED ACCORDING TO SPECIFICATIONS ON FILE IN THE OFFICE OF THE COUNTY ENGINEER AND SHALL BE INSPECTED ONLY IN THE PRESENCE OF THE COUNTY ENGINEER.
BEFORE WORK CAN BE STARTED, THE CONTRACTOR MUST OBTAIN A PERMIT TO EXCAVATE IN COUNTY STREETS FROM THE L.A. COUNTY ROAD DEPT., 128 W. 2ND ST. AND MAKE A DEPOSIT WITH THE COUNTY ENGINEER, ROOM 254 PAM AMERICAN BUILDING, 228 SO. BROADWAY SUFFICIENT TO COVER THE COST OF CONSTRUCTION INSPECTION AND INCLOSURE PLANS.
APPROVAL OF THIS PLAN BY THE COUNTY OF LOS ANGELES DOES NOT CONSTITUTE A REPRESENTATION AS TO THE ACCURACY OF THE LOCATION OF OR THE EXISTENCE OR NON-EXISTENCE OF ANY UNDERGROUND UTILITY PIPE, OR STRUCTURE WITHIN THE LIMITS OF THE PROJECT. THE NOTE APPLIES TO ALL PAGES.
IF WORK IS TO BE DONE IN A STATE HIGHWAY, A PERMIT MUST BE OBTAINED FROM THE STATE OF CALIFORNIA, DIVISION OF HIGHWAYS, 128 SOUTH SPRING STREET.

COUNTY OF LOS ANGELES, CALIFORNIA

APPROVED, JOHN A. LAMME, COUNTY ENGINEER APPROVED, A. M. RAWL, CHIEF ENGINEER

by *E. L. Hughes* by *A. M. Rawl*

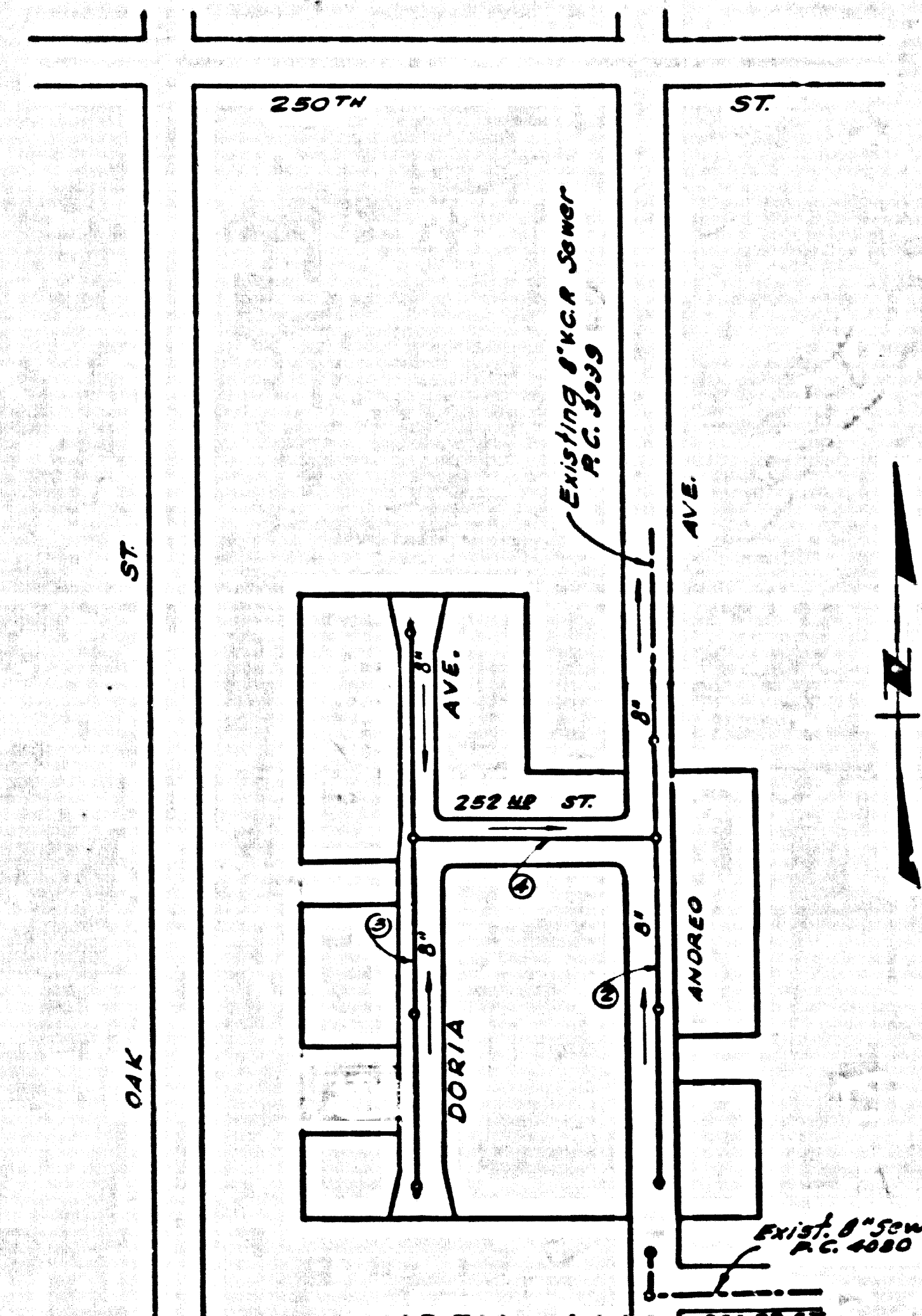
CHECKED BY *R. K. Oude* 12-2-57
OFFICE OF COUNTY ENGINEER, BLDG. C. & NO. 7435

LOMITA BLDG. DIST. NO. 7.1

- NOTES:
PROVIDE STAKES ON THE PROPERTY LINE OR PROPERTY LINES PRODUCED AT RIGHT ANGLES TO THE SEWER LINE AT THE CENTER LINE OF EACH MANHOLE.
NO REPRESENTATIVE OF THE COUNTY ENGINEER WILL SURVEY OR LAYOUT ANY PORTION OF THE WORK.
THE OWNER OR HIS AUTHORIZED REPRESENTATIVE SHALL FURNISH THE COUNTY ENGINEER WITH GRADE SHEETS AND STATION FOR ALL HOUSE LATERALS AND Y BRANCHES AND SHALL PROVIDE STAKES FOR THEM AT THEIR PROPER LOCATIONS WITH STATIONING PLAINLY MARKED. ANY CHANGE IN LOCATION SHALL BE REQUESTED IN WRITING BY THE OWNER OR HIS REPRESENTATIVE.
NO REVISIONS SHALL BE MADE IN THESE PLANS WITHOUT THE APPROVAL OF THE COUNTY ENGINEER.
1. USE STANDARD MANHOLE FRAMES AND COVERS, S-A-117, EXCEPT AS NOTED.
2. USE STANDARD STRENGTH PIPE EXCEPT AS NOTED.
3. USE CEMENT MORTAR FOR ALL VITRIFIED CLAY PIPE JOINTS.
4. RESURFACE ALL DRIVEWAYS WITHIN PAVED AREA TO MEET L.A. COUNTY ROAD DEPT., OR CALIF. STATE HIGHWAY DEPT. REQUIREMENTS IN ACCORDANCE WITH PERMITS.
5. INCASE FOUR FEET OF SEWER AT POINTS OF INTERFERENCE WITH POLES, CASE III, S-o-172.
6. HOUSE LATERALS TO BE CONSTRUCTED WITH INVERTS AT PROPERTY LINE. 6" FEET BELOW CURB GRADE EXCEPT AS NOTED.
7. ALL STRUCTURES SHALL BE BRICK SEWER STRUCTURES, S-A-184, EXCEPT AS NOTED.
8. FOR ALLOWABLE LEAKAGE TEST USE FORMULA NO. 2-N-F SPCE., SEC. 54.
9. MANHOLE TOPS IN UNIMPROVED RIGHTS-OF-WAY TO BE 6" ABOVE FINISHED GRADE.
10. ALL THE LOCATIONS SHOWN FOR EXISTING SUBSTRUCTURES HAVE BEEN TAKEN FROM RECORDS AND THEIR CORRECTNESS AND COMPLETENESS IS IN NO WAY GUARANTEED. IT SHALL BE THE CONTRACTOR'S RESPONSIBILITY ALONE TO DEFINITELY LOCATE ALL UNDERGROUND LINES OF EVERY NATURE WHETHER SHOWN HEREON OR NOT, AND PROTECT THEM FROM DAMAGE. THE CONTRACTOR SHALL BEAR THE TOTAL EXPENSE OF REPAIR TO ANY LINE DAMAGED BY ANY OPERATION IN CONNECTION WITH THE PROSECUTION OF THIS WORK.
11. THE PRIVATE ENGINEER IS TO FURNISH THE HOUSE LATERAL DEPTH AT THE PROPERTY LINE BELOW THE TOP OF CURB ELEVATION FOR EACH HOUSE LATERAL ON THE GRADE SHEET.

NOTE:
THE CONTRACTOR SHALL NOTIFY THE CONSTRUCTION AND WORKS BRANCH DIVISION BY TELEPHONE, MADISON 9-4747, EXT. 368 AT LEAST 24 HOURS BEFORE STARTING ANY WORK UNDER THIS CONTRACT.

BM - SY 3518, Elev. 67.121
Lead & Tack, E. End Conc. Island of Gas Station, S.W. Corner Estahman Ave. & Lomita Bldg.

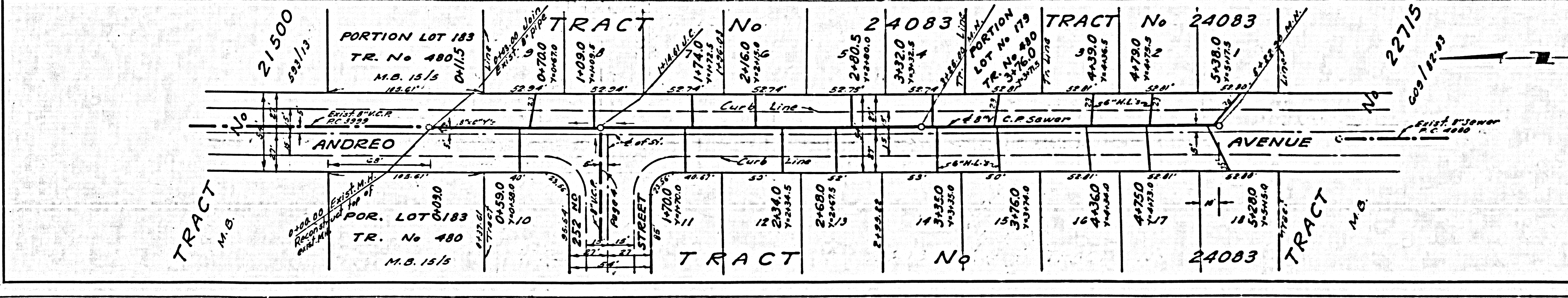
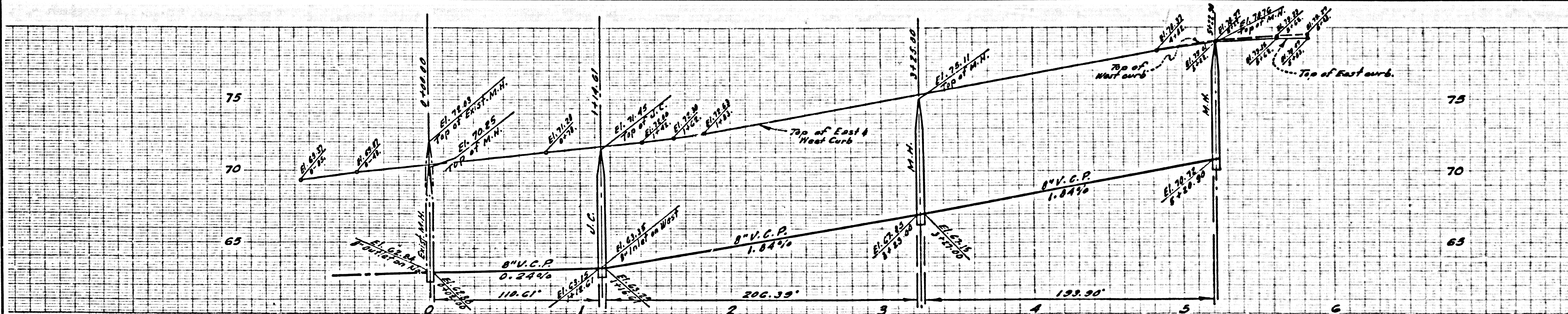


INDEX MAP
SCALE: 1" = 200'
TRACT No 24083
P.C. 4598

NO CHARGE FOR CONNECTIONS
Z. Carter 12-3-57

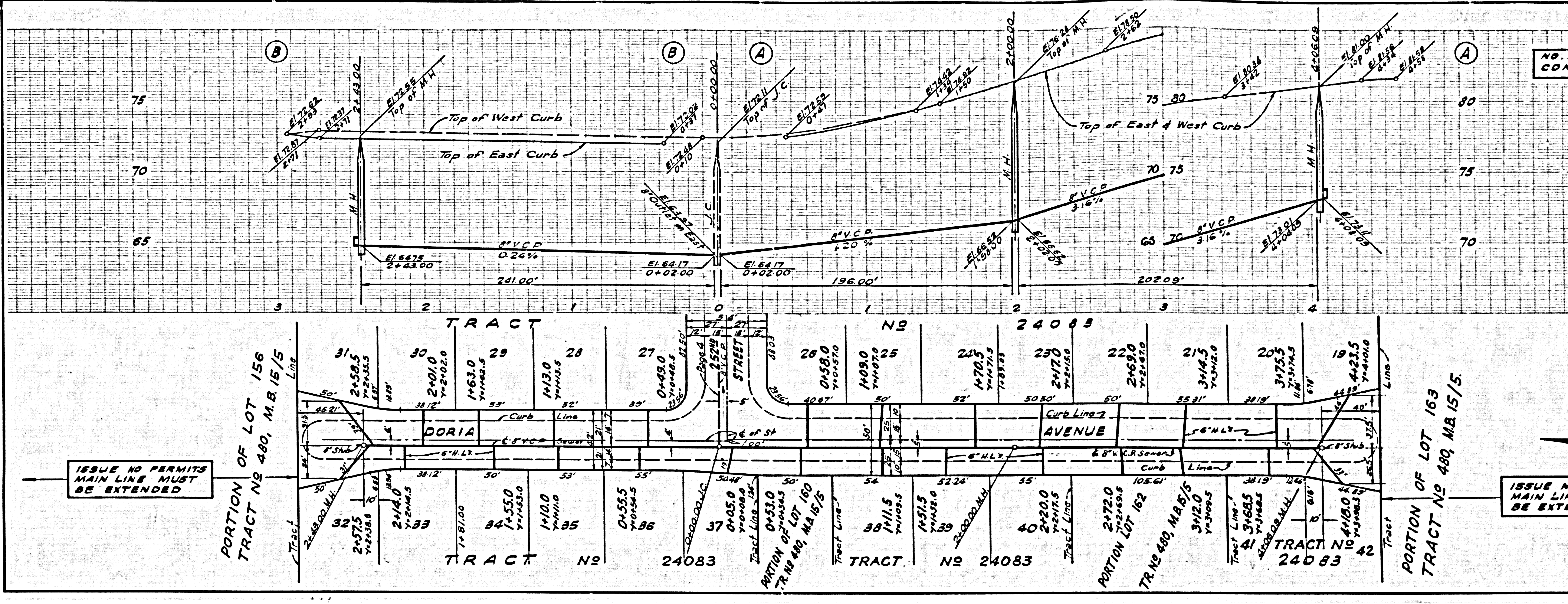
26,300

NO CHARGE FOR CONNECTIONS



NO CHARGE FOR CONNECTIONS

26301

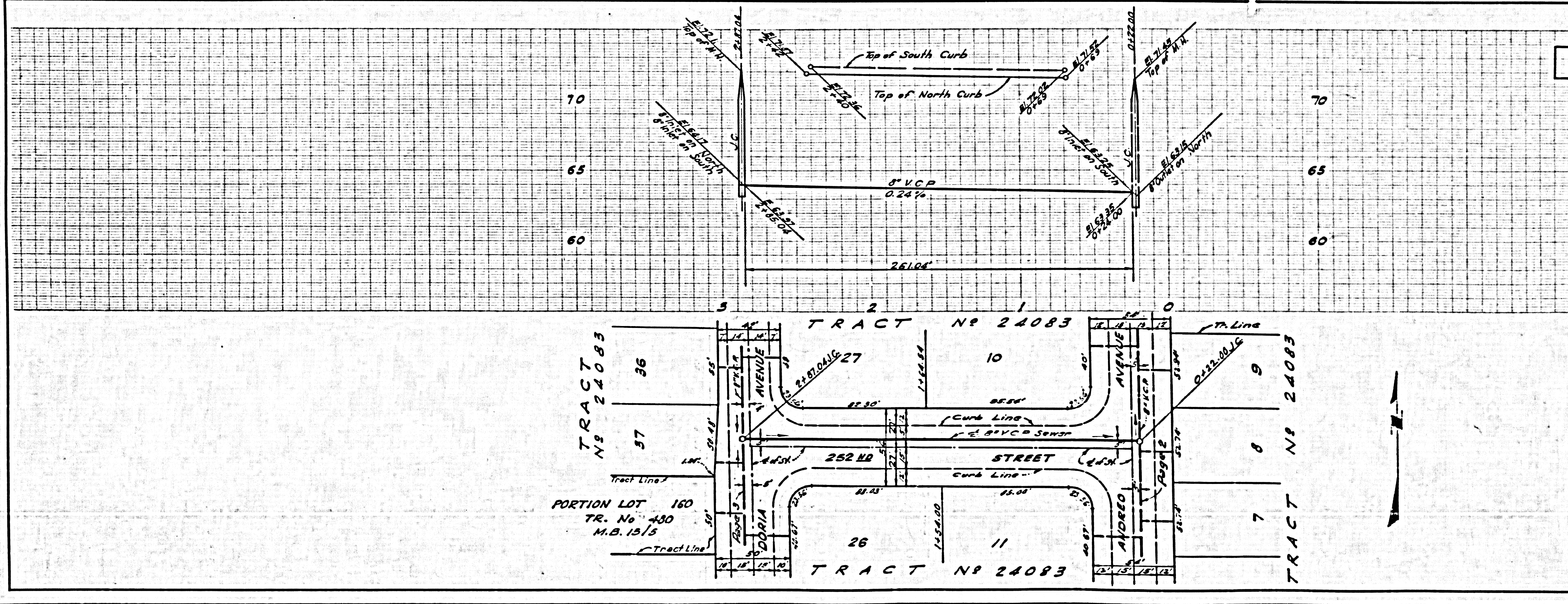


ISSUE NO PERMITS MAIN LINE MUST BE EXTENDED

ISSUE NO PERMITS MAIN LINE MUST BE EXTENDED

NO CHARGE FOR CONNECTIONS

26302



PORTION LOT 160 TR. No. 480 M.B. 15/5

J.C.