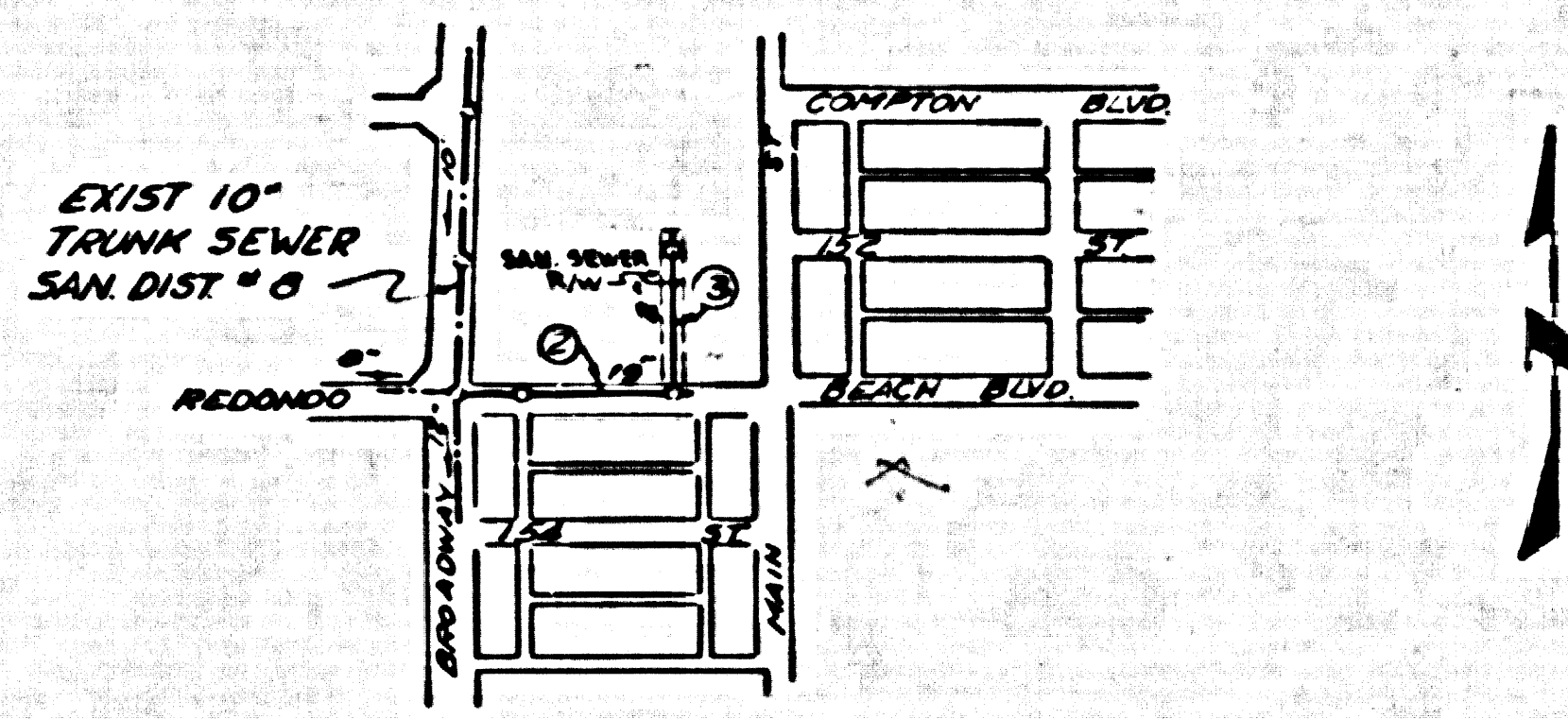


NOTE:
THE RECORD OUTLET INVERT ELEV. 43.87
SAN. DIST. M.M. AT THE INTERSECTION
OF BROADWAY AND REDONDO BEACH
BLVD. WAS USED AS THE BASIS OF
ALL ELEVATIONS SHOWN ON THIS
IMPROVEMENT.

LENNOX BLDG. DIST. NO. 7

- NO FE:
PROVIDE STAKES ON THE PROPERTY LINE OR PROPERTY LINES PRODUCED AT RIGHT ANGLES TO THE SEWER LINE AT THE CENTER
LINE OF EACH MANHOLE.
- NO REPRESENTATIVE OF THE COUNTY ENGINEER WILL SURVEY OR LAY OUT ANY PORTION OF THE WORK.
- THE OWNER OR HIS AUTHORIZED REPRESENTATIVE SHALL FURNISH THE COUNTY ENGINEER WITH GRADE SHEETS AND STATION
FOR ALL HOUSE LATERALS AND TRENCHES AND SHALL PROVIDE STAKES FOR THEM AT THEIR PROPER LOCATIONS WITH STATION-
ING PLAINLY MARKED. ANY CHANGE IN LOCATION SHALL BE INDICATED BY WRITING BY THE OWNER OR HIS REPRESENTATIVE.
- NO STRUCTURES SHALL BE MADE IN THESE PLANS WITHOUT THE APPROVAL OF THE COUNTY ENGINEER.
- USE STANDARD MANHOLE FRAMES AND COVERS, S.A-117, EXCEPT AS NOTED.
 - USE 3" D. STRENGTH PIPE, EXCEPT AS NOTED.
 - USE CEMENT MORTAR OR "FIBRE-GLASS" OR "FIBRO-GLASS" FOR ALL S.E.P. JOINTS PER S.A-117, SPEC. 10 & 11.
 - RESURFACE ALL TRENCH WITHIN PAVED AREA TO MEET L.A. COUNTY ROAD DEPT., OR CALIF. STATE HIGHWAY DEPT. REQUIRE-
MENTS IN ACCORDANCE WITH PERMITS.
 - ENCASE FOUR FEET OF SEWER AT POINTS OF INTERFERENCE WITH POLES, CASE 117, S.A-172.
 - HOUSE LATERALS TO BE CONSTRUCTED WITH INVERTS AT 20" DEPTH UNLESS OTHERWISE SHOWN OR SPECIFIED AS NOTED.
 - ALL STRUCTURES SHALL BE BRICK SEWER STRUCTURES, S.A-104, EXCEPT AS NOTED.
 - FOR ALLOWABLE LEAKAGE TEST USE FORMULA NO. 1, SPEC. 5, SEC. 50.
 - MANHOLE TOPS IN UNIMPROVED RIGHTS-OF-WAY TO BE 6" ABOVE FINISHED GRADE.

NOTE:
THE CONTRACTOR SHALL NOTIFY THE CONSTRUCTION AND
STORM DRAIN DIVISION BY TELEPHONE, MADISON 9-4747,
EXT. 362, AT LEAST 24 HOURS BEFORE STARTING ANY
WORK UNDER THIS CONTRACT.



INDEX MAP
SCALE 1" = 600'
P.C. 4604

Before breaking into any existing structure
and before final acceptance of this work
County Sanitation District should be notified
in order that required inspection may be made.

PROFILE ALIGNMENT AND GRADE OF P.C. 4604
SANITARY SEWERS PAGE 1
TO BE CONSTRUCTED IN

26,593

REDONDO BEACH BLVD.
& A SANITARY SEWER RIGHT OF WAY

PRIVATE CONTRACT NO. 4604

W.S. 26

2 SHEETS, 3 PAGES

SCALE: VERT. 1" = 4' - OCT., 1957

PREPARED IN THE OFFICES OF

QUINTON ENGINEERS, LTD.

By H. W. Lounser

REG. C. E. NO. 6922

FOR LEGEND SEE PLAN NO. S-A-64

NOTE:
GRABES TO WHICH THE IMPROVEMENT IS TO BE CONSTRUCTED ARE SHOWN ON PLANS AND PROFILE. GRADE POINTS FOR
TOP OF CURB, CENTER LINE OF STREETS, OR CENTER LINE OF ALLEYS ARE SHOWN BY CIRCLES ON PROFILES AT ALL POINTS BETWEEN
MANHOLE POINTS THE GRADE SHALL BE ESTABLISHED SO AS TO CONFORM TO A STRAIGHT LINE DRAWN BETWEEN SAID BE-
NEATH POINTS.

ELEVATIONS ARE IN FEET ABOVE M.E.C. SEA LEVEL, DATUM OF 1929.

THE DRAWING AND THE DATA HEREON ARE HEREBY MADE A PART OF THE SPECIFICATIONS.

WORK SHALL BE CONSTRUCTED ACCORDING TO SPECIFICATIONS ON FILE IN THE OFFICE OF THE COUNTY ENGINEER AND SHALL
BE PROSECUTED ONLY IN THE PRESENCE OF THE COUNTY ENGINEER.

BEFORE WORK CAN BE STARTED, THE CONTRACTOR MUST OBTAIN A PERMIT TO EXCAVATE IN COUNTY STREETS FROM THE
L.A. COUNTY ROAD DEPT., SPEC. 20 & 21 AND MAKE A REPORT WITH THE COUNTY ENGINEER, ROOM 300 P.M. AMERICAN ROAD,
Rm. 333 SO. BROADWAY SUFFICIENT TO COVER THE COST OF CONSTRUCTION INSPECTION AND RECORD PLANS.

APPROVAL OF THIS PLAN BY THE COUNTY OF LOS ANGELES DOES NOT CONSTITUTE A REPRESENTATION AS TO THE ACCURACY
OF THE LOCATION OR OF THE EXISTENCE OR NON-EXISTENCE OF ANY UNDERGROUND UTILITY PIPE, OR STRUCTURE WITHIN THE
LIMITS OF THIS PROJECT. THIS NOTE APPLIES TO ALL PAGES.

IF WORK IS TO BE DONE ON A STATE HIGHWAY, A PERMIT MUST BE OBTAINED FROM THE STATE OF CALIFORNIA, DIVISION OF
HIGHWAYS, 128 SOUTH SPRING STREET.

COUNTY OF LOS ANGELES, CALIFORNIA

APPROVED, JOHN A. LAMBE, COUNTY ENGINEER

APPROVED, A. M. RAWN, CHIEF ENGINEER

BY H. W. Lounser
SANITATION ENGINEER

BY H. W. Lounser
OFFICE ENGINEER

CHECKED BY J. K. O'Neil

OFFICE OF COUNTY ENGINEER, REG. C. E. NO. 3406

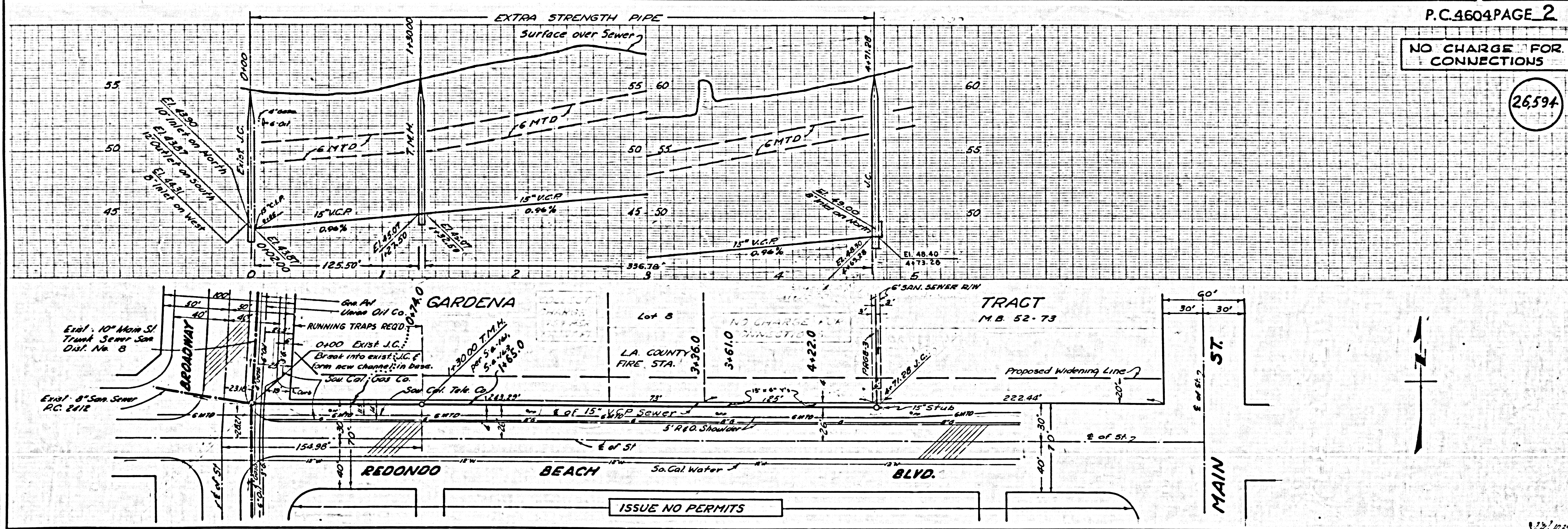
Approved By Bernard J. Valasek 10/23/58
Industrial Waste Division

NO CHARGE FOR
CONNECTIONS
A. Curtis 10-21-58

P.C. 4604 PAGE 2

NO CHARGE FOR
CONNECTIONS

26,594

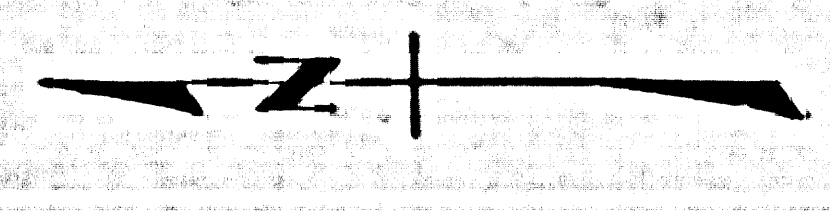
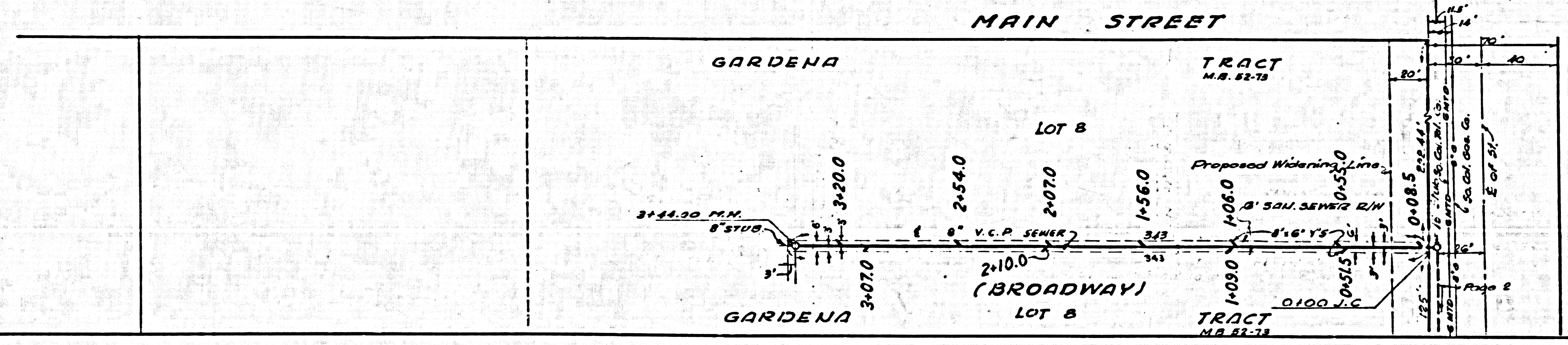
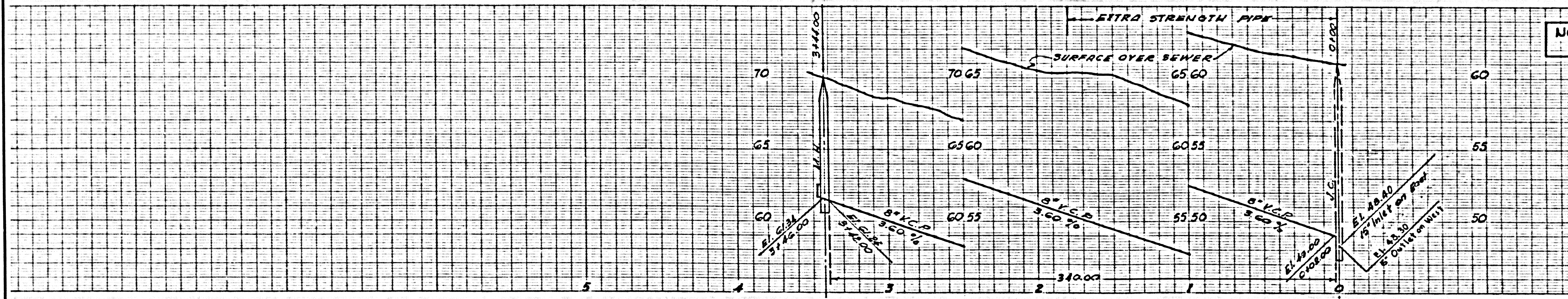


ISSUE NO PERMITS

P.C. 4604

NO CHARGE FOR CONNECTIONS

26,595



© 4084 J.B.