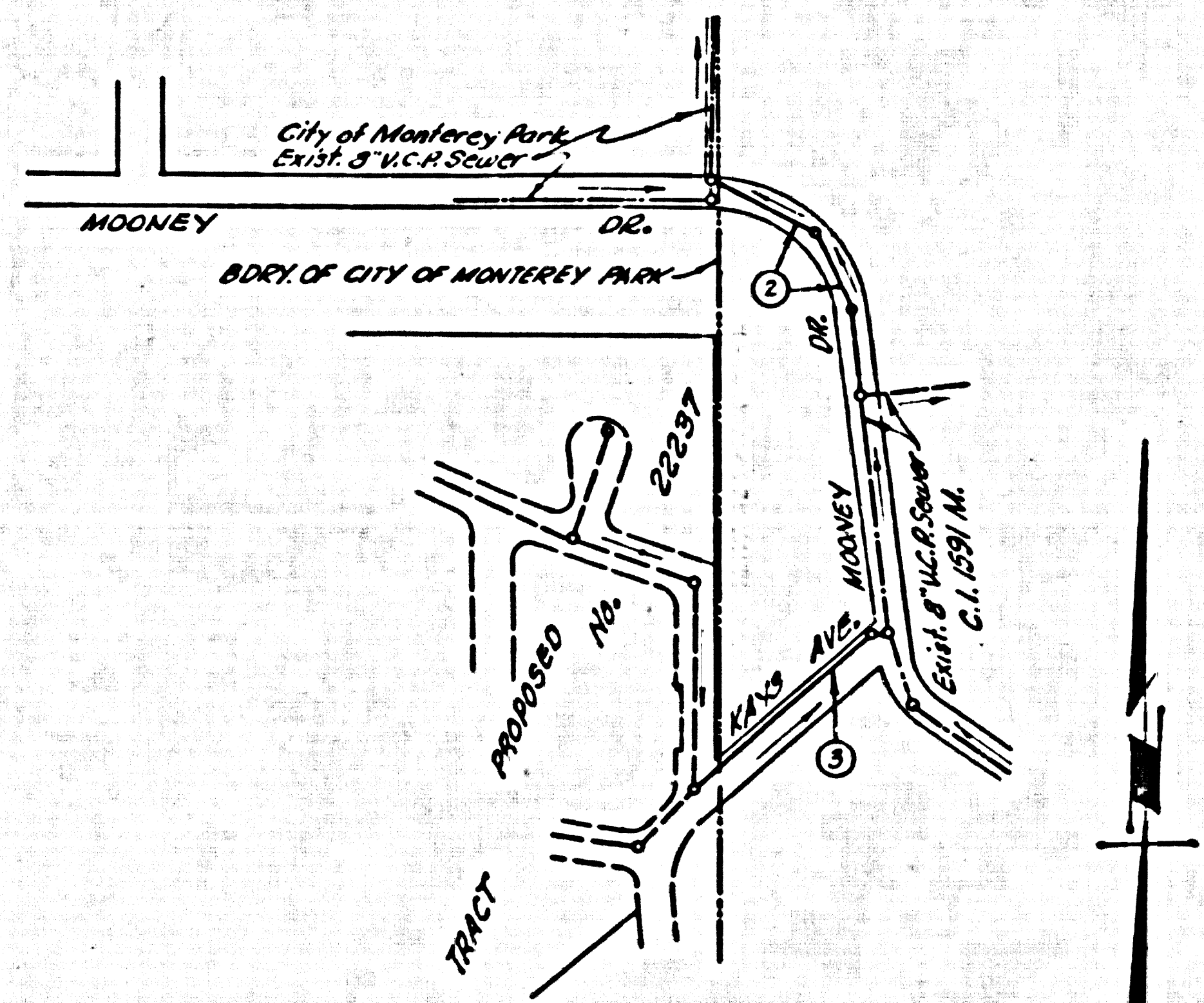


TEMPLE CITY BLDG. DIST. NO. 5

PROFILE ALIGNMENT AND GRADE OF P.C. 4611
 SANITARY SEWERS PAGE 1



INDEX MAP
 PG. 4611 SCALE: 1" = 200'

B.M. Top Boat Spike Garage Door
 20 W. and 3 So. E. Kays Ave. of
 Mooney Drive ELEV. 414.50

This B.M. is a City of Monterey Park B.M.
 Add 0.05' to El. Shown on this plan to be
 an L.A. Co. Engr. Datum for this Area.

NO CHARGE FOR
 CONNECTIONS
 3-11-58

- NOTES:
- PROVIDE STAKES ON THE PROPERTY LINE OR PROPERTY LINES PRODUCED AT RIGHT ANGLES TO THE SEWER LINE AT THE CENTER LINE OF EACH MANHOLE.
 - NO REPRESENTATIVE OF THE COUNTY ENGINEER SHALL SURVEY OR LAYOUT ANY PORTION OF THE WORK.
 - THE OWNER OR HIS AUTHORIZED REPRESENTATIVE SHALL FURNISH THE COUNTY ENGINEER WITH GRADE SHEETS AND STATION FOR ALL HOUSE LATERALS AND Y BRANCHES AND SHALL PROVIDE STAKES FOR THEM AT THESE PLACES LOCATIONS WITH STATIONING PLAINLY MARKED. ANY CHANGE IN LOCATION SHALL BE INDICATED BY WRITING BY THE OWNER OR HIS REPRESENTATIVE.
 - NO REVISIONS SHALL BE MADE IN THESE PLANS WITHOUT THE APPROVAL OF THE COUNTY ENGINEER.
 - USE STANDARD MANHOLE FRAMES AND COVERS, S.A. 117, EXCEPT AS NOTED.
 - USE STANDARD STRENGTH PIPE EXCEPT AS NOTED.
 - USE CEMENT MORTAR OR "WEDGE-LOCK" OR "WEDG-SEAL" FOR ALL VITRIFIED CLAY PIPE. SHOW PER SPEC. SEC. 26-404.
 - RESURFACE ALL TRUCKS WITHIN PAVED AREA TO MEET L. A. COUNTY ROAD DEPT., OR CALIF. STATE HIGHWAY DEPT. REQUIREMENTS IN ACCORDANCE WITH PERMITS.
 - ENCASE FOUR FEET OF SEWER AT POINTS OF INTERFERENCE WITH POLES, S.A. 177 CLS. II.
 - HOUSE LATERALS TO BE CONSTRUCTED WITH INVERTS AT PROPERTY LINE. 6" FEET BELOW CLAY GRADE EXCEPT AS NOTED.
 - ALL STRUCTURES SHALL BE BRICK SEWER STRUCTURES, S.A. 104, EXCEPT AS NOTED.
 - FOR ALLOWABLE LEAKAGE TEST USE FORMULA NO. 1 SPEC. S. 34.
 - MANHOLE TOPS IN UNIMPROVED RIGHTS-OF-WAY TO BE 6" ABOVE FINISHED GRADE.
 - THE CONTRACTOR SHALL VERIFY THE CONSTRUCTION AND FINISH GRADE SYSTEM BY TELEPHONE MEANS OR BY VISUAL MEANS AT LEAST 24 HOURS BEFORE STARTING ANY WORK UNDER THIS CONTRACT.

TO BE CONSTRUCTED IN
 KAYS AVENUE
 FROM MOONEY DRIVE SOUTHWESTERLY TO BDRY. OF MONTEREY PARK
 MOONEY DRIVE
 FROM BDRY. OF CITY OF MONTEREY PARK SOUTHERLY 397 FEET
 PRIVATE CONTRACT NO. 4611

W.S. 56
 2 SHEETS; 2 PAGES
 SCALE: VERT. 1" = 8' HORIZ. 1" = 20' OCT. 1957
 PREPARED IN THE OFFICES OF
 KEMMERER ENGR. CO., INC.
 BY: *Harry C. Johnson*
 REG. C. E. NO. 7112

26,104

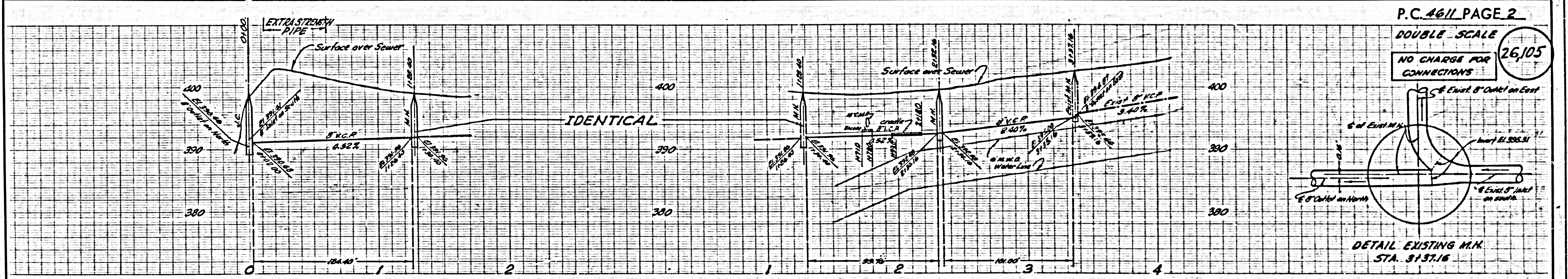
FOR LEGEND SEE PLAN NO. S-A-64

NOTE:
 GRADES TO WHICH THIS IMPROVEMENT IS TO BE CONSTRUCTED ARE SHOWN ON PLANS AND PROFILES. GRADE POINTS FOR TOP OF CURBS, CENTER LINE OF STREETS, OR CENTER LINE OF ALLEYS ARE SHOWN BY CIRCLES ON PROFILES AT ALL POINTS BETWEEN DESIGNATED POINTS THE GRADE SHALL BE ESTABLISHED SO AS TO CONFORM TO A STRAIGHT LINE DRAWN BETWEEN SAID DESIGNATED POINTS.
 ELEVATIONS ARE IN FEET ABOVE U.S.C. & G.S. SEA LEVEL UNLESS OTHERWISE NOTED.
 THIS DRAWING AND THE DATA HEREON ARE HEREBY MADE A PART OF THE SPECIFICATIONS.
 WORK SHALL BE CONSTRUCTED ACCORDING TO SPECIFICATIONS ON FILE IN THE OFFICE OF THE COUNTY ENGINEER AND SHALL BE PROSECUTED ONLY IN THE PRESENCE OF THE COUNTY ENGINEER.
 BEFORE WORK CAN BE STARTED, THE CONTRACTOR MUST OBTAIN A PERMIT TO EXCAVATE IN COUNTY STREETS FROM THE L. A. COUNTY ROAD DEPT. AND IN SIDE ST. AND ALLEYS FROM THE COUNTY ENGINEER, ROOM 504 MAIN AMERICAN BLDG., 233 SO. BROADWAY SUFFICIENT TO COVER THE COST OF CONSTRUCTION INSPECTION AND RECORD PLANS.
 APPROVAL OF THIS PLAN BY THE COUNTY OF LOS ANGELES DOES NOT CONSTITUTE A REPRESENTATION AS TO THE ACCURACY OF THE LOCATION OF OR THE EXISTENCE OR NON-EXISTENCE OF ANY UNDERGROUND UTILITY PIPE, OR STRUCTURE WITHIN THE LIMITS OF THE PROJECT THIS NOTE APPLIES TO ALL PAGES.
 IF WORK IS TO BE DONE IN A STATE HIGHWAY, A PERMIT MUST BE OBTAINED FROM THE STATE OF CALIFORNIA, DIVISION OF HIGHWAYS, 120 SOUTH SPRING STREET.

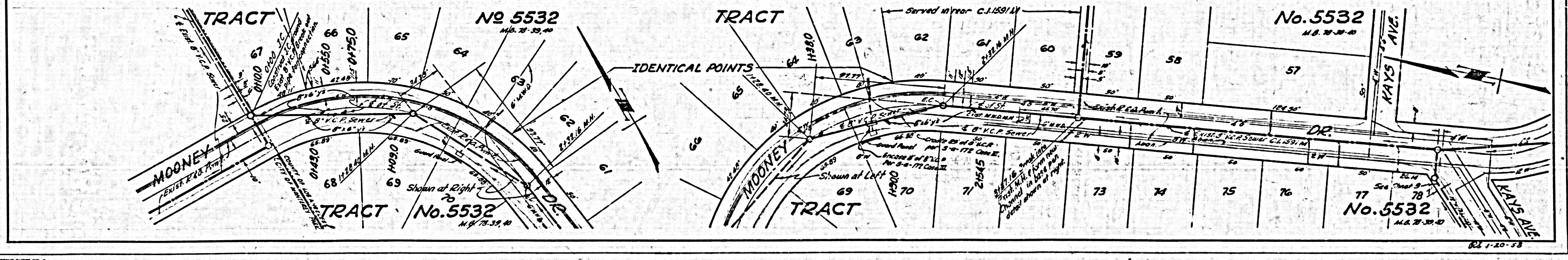
COUNTY OF LOS ANGELES, CALIFORNIA

APPROVED, JOHN A. LAMBE, COUNTY ENGINEER
 APPROVED, A. M. RAWL, CHIEF ENGINEER
 BY: *B. H. Hughes* (Sanitation Engineer) BY: *H. R. ...* (Office Engineer)
 CHECKED BY: *...*
 OFFICE OF COUNTY ENGINEER, Rm. C. & No. 300

APPROVED: *...*
 Asst. City Engineer - City of Monterey Park



P.C. 4611 PAGE 2
 DOUBLE SCALE
 NO CHARGE FOR CONNECTIONS
 26,105



1-12

