

TEMPLE CITY BLDG. DIST. NO. 5

B.M. N° 56 638 - Elev 518.874  
Lower House Bl E Temple City Bldg. N.E. cor.  
LET N. Curb Lower House Bl. N.W. of Return

PROFILE ALIGNMENT AND GRADE OF P.C. 4612  
SANITARY SEWERS PAGE 1  
TO BE CONSTRUCTED IN  
SANITARY SEWER RIGHT OF WAY

PRIVATE CONTRACT NO. 4612

W.S. 44  
1 SHEET OF 2 PAGES  
SCALE: 1" = 4' HORIZ.  
1" = 4' VERT. OCTOBER, 1957  
PREPARED IN THE OFFICES OF

28,012

By Marshall C. Pond  
REG. C. E. NO. 8442

FOR LEGEND SEE PLAN NO. S-A-64

NOTE:  
GRADES TO WHICH THIS IMPROVEMENT IS TO BE CONSTRUCTED AS SHOWN ON PLANS AND PROFILES GRADE POINTS FOR TOP OF CURBS, CENTER LINE OF ALLEYS, OR CENTER LINE OF ALLEYS ARE SHOWN BY CIRCLES ON PROFILES AT ALL POINTS BETWEEN DESIGNATED POINTS. THE GRADE SHALL BE ESTABLISHED SO AS TO CONFORM TO A STRAIGHT LINE DRAWN BETWEEN SAID DESIGNATED POINTS.  
ELEVATIONS ARE IN FEET ABOVE U.S.C. & G.S. SEA LEVEL DATUM OF 1929  
THIS DRAWING AND THE DATA HEREON ARE HEREBY MADE A PART OF THE SPECIFICATIONS  
WORK SHALL BE CONSTRUCTED ACCORDING TO SPECIFICATIONS ON FILE IN THE OFFICE OF THE COUNTY ENGINEER AND SHALL BE INSPECTED ONLY BY THE PRESENCE OF THE COUNTY ENGINEER  
BEFORE WORK CAN BE STARTED, THE CONTRACTOR MUST OBTAIN A PERMIT TO EXCAVATE IN COUNTY STREETS FROM THE L. A. COUNTY ROAD DEPT. AND MAKE A REPORT WITH THE COUNTY ENGINEER, ROOM 224 SAN ANTONIO BUILDING, 225 SO. BROADWAY SUFFICIENT TO COVER THE COST OF CONSTRUCTION INSPECTION AND RECORD PLANS.  
APPROVAL OF THIS PLAN BY THE COUNTY OF LOS ANGELES DOES NOT CONSTITUTE A REPRESENTATION AS TO THE ACCURACY OF THE LOCATION OF OR THE EXISTENCE OR NON-EXISTENCE OF ANY UNDERGROUND UTILITY PIPE, OR STRUCTURE WITHIN THE LIMITS OF THIS PROJECT. THE CONTRACTOR SHALL BE RESPONSIBLE FOR THE LOCATION OF ALL SUCH UTILITIES.  
IF WORK IS TO BE DONE ON A STATE HIGHWAY, A PERMIT MUST BE OBTAINED FROM THE STATE OF CALIFORNIA, DIVISION OF HIGHWAYS, 128 SOUTH SPRING STREET.

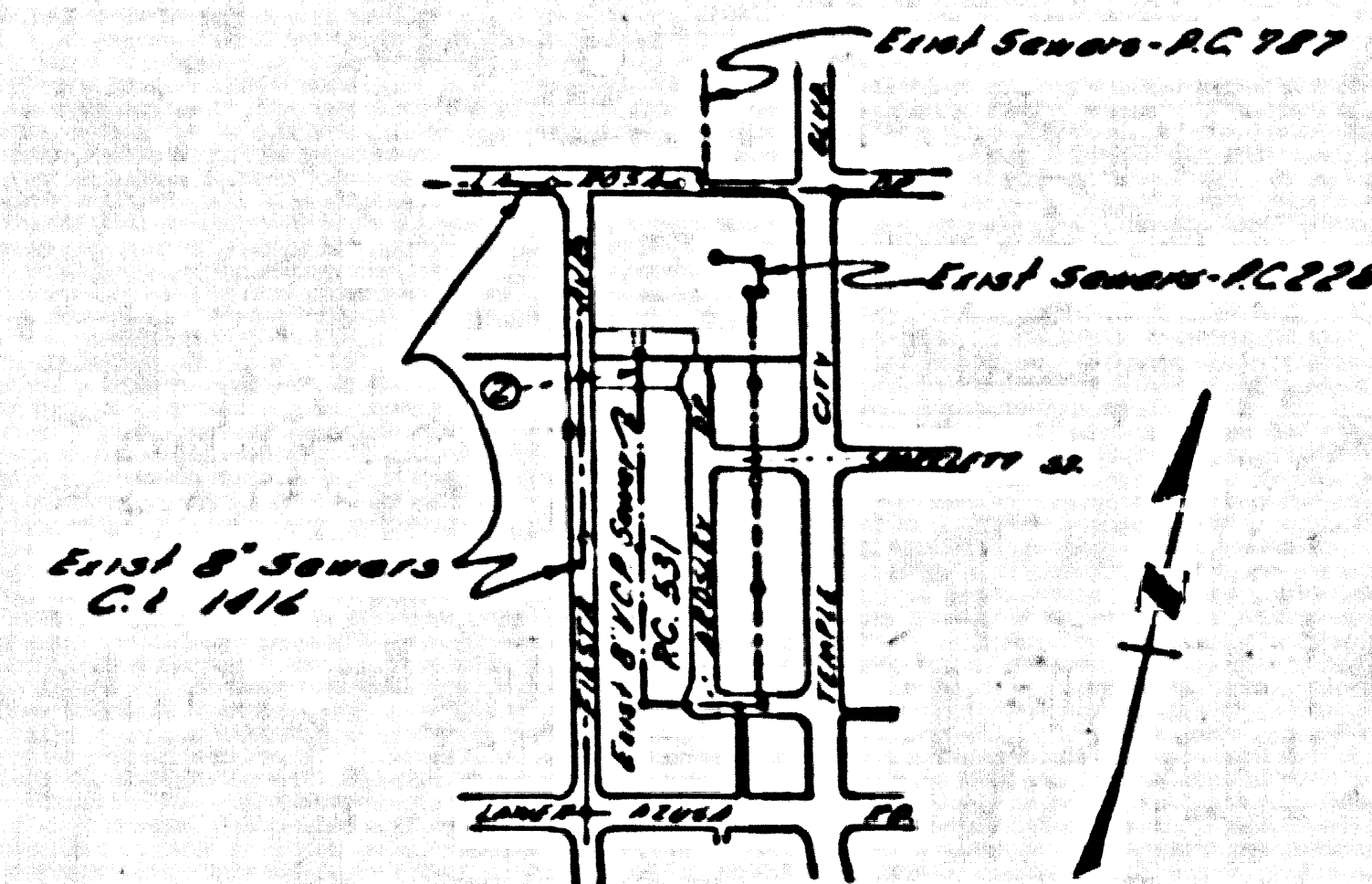
COUNTY OF LOS ANGELES, CALIFORNIA

APPROVED, JOHN A. LAMBE, COUNTY ENGINEER  
APPROVED, C.R. COMPTON, CHIEF ENGINEER  
CO. SAN DIST. NO. 15  
BY C. J. Hughes SANITATION ENGINEER  
BY J. B. Williams OFFICE ENGINEER  
CHECKED BY S. G. Under 11-1-57  
OFFICE OF COUNTY ENGINEER, REG. C. E. NO. 946L

NOTE:  
THE CONTRACTOR SHALL NOTIFY THE CONSTRUCTION AND STORM DRAIN DIVISION BY TELEPHONE MADISON 9-4747, EX1. 362, AT LEAST 24 HOURS BEFORE STARTING ANY WORK UNDER THIS CONTRACT.

NO CHARGE FOR CONNECTIONS

Ed. J. Caldwell 2-27-57

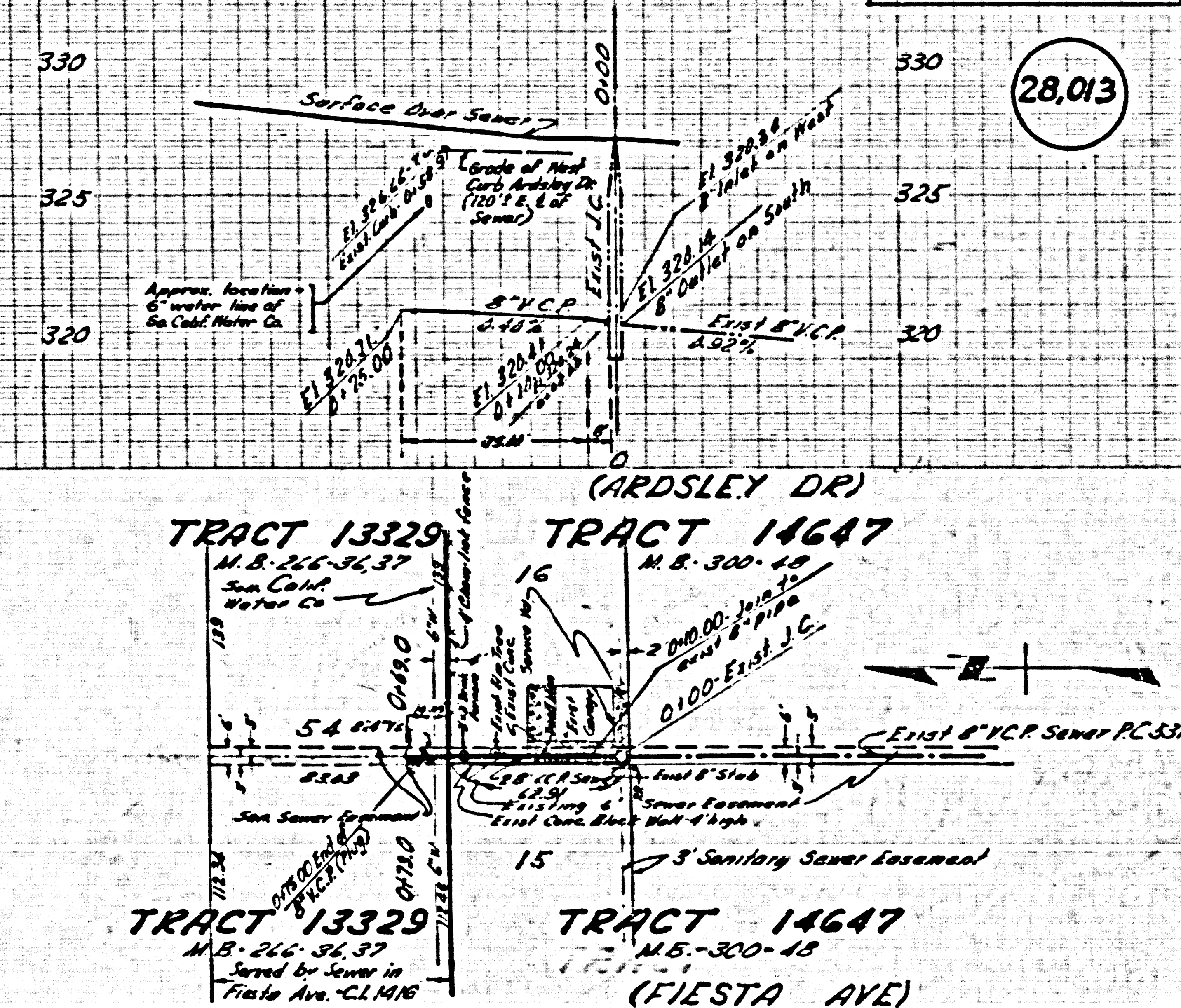


INDEX MAP  
Scale: 1"=600'  
PC 4612

P.C. 4612 PAGE 2

NO CHARGE FOR CONNECTIONS

28,013



PC 4612