

BENCH MARK *4Y3520
 L. & B.N.± 1' W. of Curb Return @ NW Corner
 Lomita Blvd. & Norbonne Ave. (Gardena Quad) (1953)
 Elev. 70.093 (1953)

LOMITA BLDG. DIST. NO. 71

PROFILE ALIGNMENT AND GRADE OF P.C. 4619
 SANITARY SEWERS PAGE 1

TO BE CONSTRUCTED IN
 TRACT NO 24120 (26,098)

PRIVATE CONTRACT NO. 4619
 W.S. 28

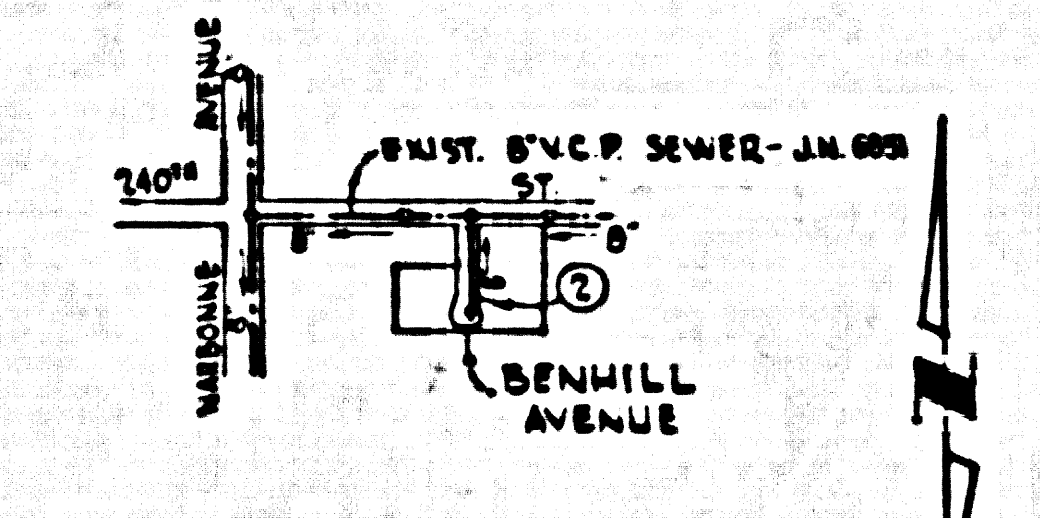
1 SHEET, 2 PAGES
 SCALE: VERT. 1"=6' AUGUST, 1957
 HORIZ. 1"=40'

PREPARED IN THE OFFICES OF
 VIC CASE
 1450 ORANGE AVE.
 LONG BEACH, CALIF.

BY: *Vic Case*
 REG. C. E. NO. 7475

FOR LEGEND SEE PLAN NO. S-A-64

- NOTES:
- PROVIDE STAKES ON THE PROPERTY LINE OR PROPERTY LINES PRODUCED AT RIGHT ANGLES TO THE SEWER LINE AT THE CENTER LINE OF EACH MANHOLE.
 - NO REPRESENTATIVE OF THE COUNTY ENGINEER WILL SURVEY OR LAYOUT ANY PORTION OF THE WORK.
 - THE OWNER OR HIS AUTHORIZED REPRESENTATIVE SHALL FURNISH THE COUNTY ENGINEER WITH GRADE SHEETS AND STATION FOR ALL HOUSE LATERALS AND Y BRANCHES AND SHALL PROVIDE STAKES FOR THESE AT THEIR PROPER LOCATIONS WITH STATIONING PLAINLY MARKED. ANY CHANGE IN LOCATION SHALL BE REQUESTED BY WRITING BY THE OWNER OR HIS REPRESENTATIVE.
 - NO REVISIONS SHALL BE MADE IN THESE PLANS WITHOUT THE APPROVAL OF THE COUNTY ENGINEER.
 - USE STANDARD MANHOLE FRAMES AND COVERS, S-A-117.
 - USE STANDARD STRENGTH PIPE.
 - USE CEMENT MORTAR FOR ALL VITRIFIED CLAY PIPE JOINTS.
 - RESURFACE ALL BRANCH WITHIN PAVED AREA TO MEET L. A. COUNTY ROAD DEPT., OR CALIF. STATE HIGHWAY DEPT. REQUIREMENTS IN ACCORDANCE WITH PERMITS.
 - SHOULDER FOUR FEET OF SEWER AT POINTS OF INTERFERENCE WITH POLES, CASE III, S-A-172.
 - HOUSE LATERALS TO BE CONSTRUCTED WITH INVERTS AT PROPERTY LINE. 6" MIN. BELOW CURB GRADE.
 - ALL STRUCTURES SHALL BE BRICK SEWER STRUCTURES, S-A-184.
 - FOR ALLOWABLE LEAKAGE USE FORMULA NO. 1 SPEC. SEC. 54.
 - THE PRIVATE ENGINEER SHALL FURNISH THE HOUSE LATERAL DEPTH AT THE PROPERTY LINE BELOW THE TOP OF CURB ELEVATION FOR EACH HOUSE LATERAL ON THE GRADE SHEETS.



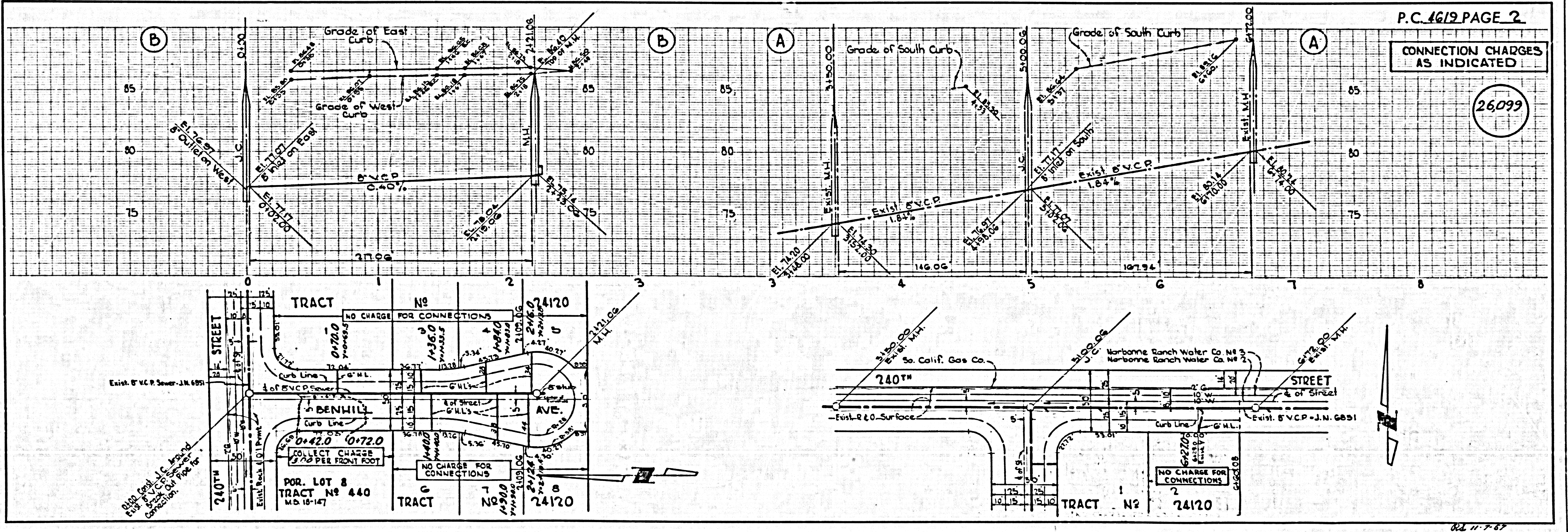
INDEX MAP
 SCALE 1"=600'
 TRACT NO 24120
 P.C. 4619

CONNECTION CHARGES
 AS INDICATED
L. Case 12-27-57

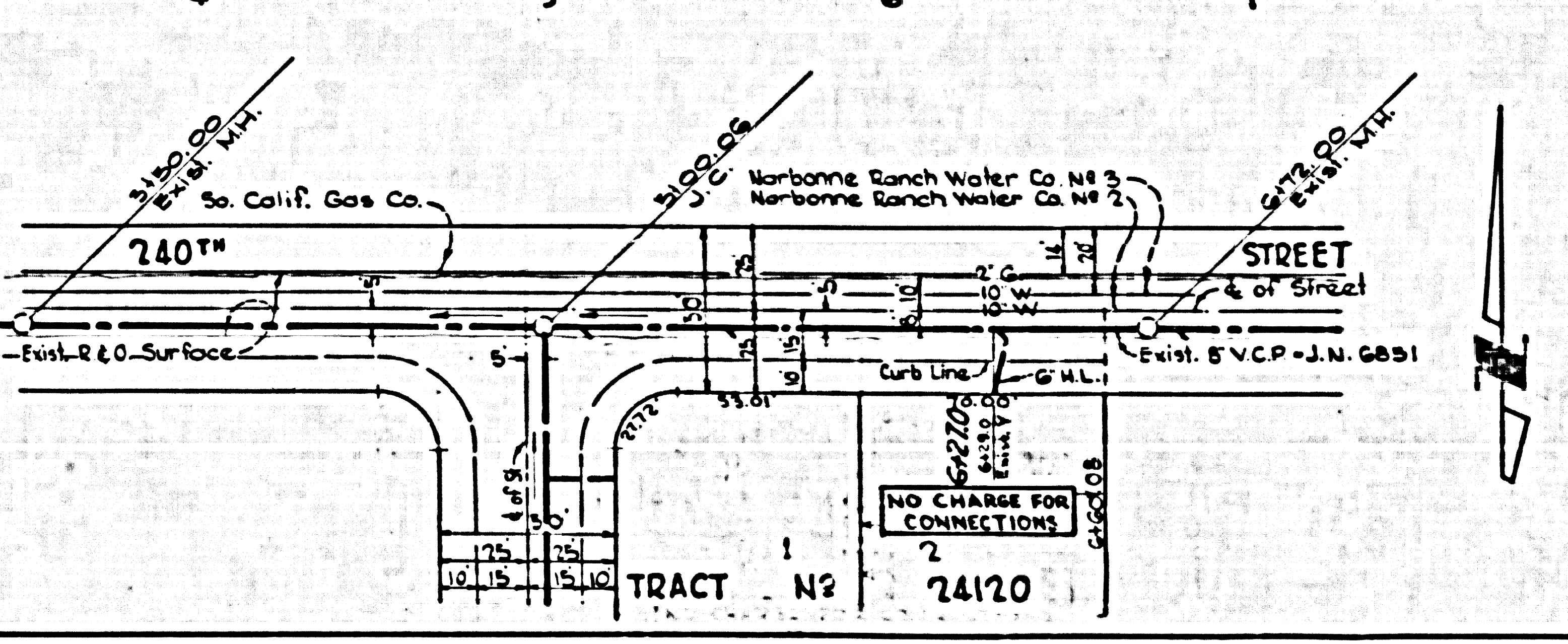
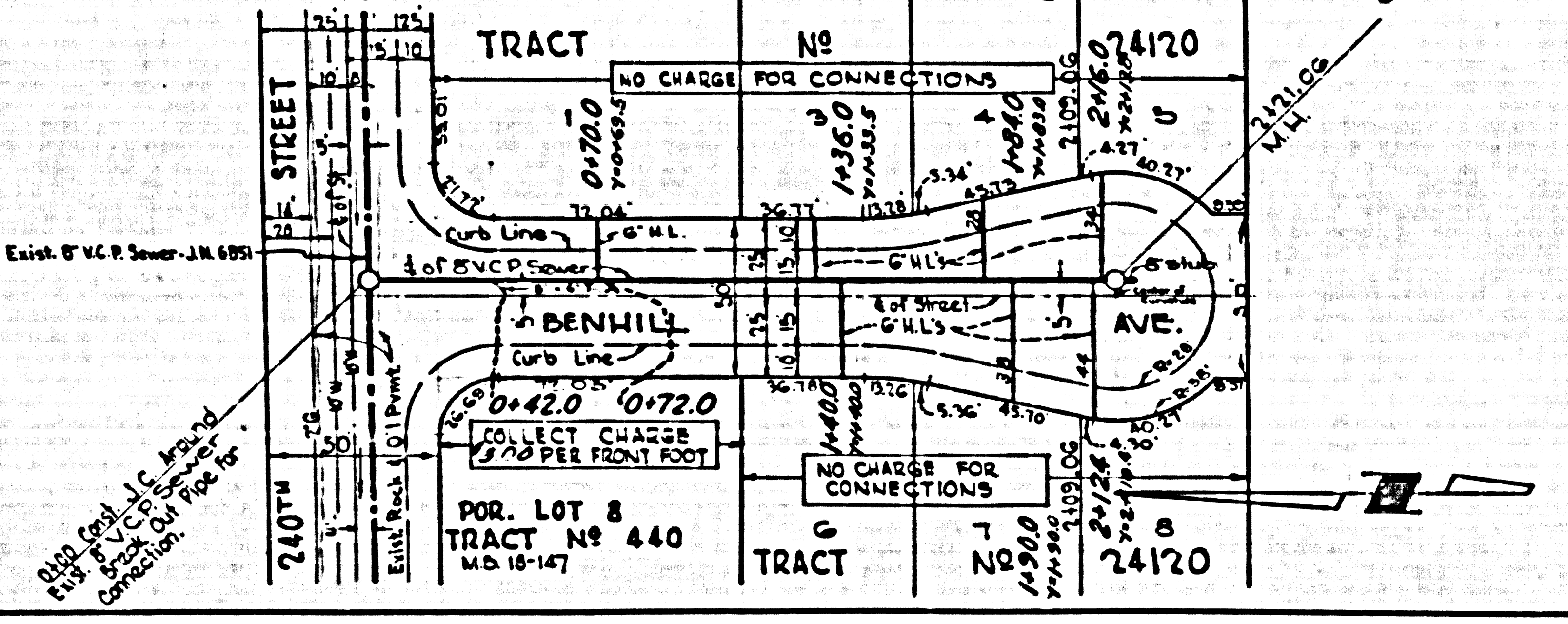
NOTES:
 GRADES TO WHICH THIS IMPROVEMENT IS TO BE CONSTRUCTED ARE SHOWN ON PLANS AND PROFILES. GRADE POINTS FOR TOP OF CURB, CENTER LINE OF STREETS, OR CENTER LINE OF ALLEYS ARE SHOWN BY CIRCLES ON PROFILES. AT ALL POINTS BETWEEN BENCHMARK POINTS THE GRADE SHALL BE ESTABLISHED SO AS TO CONFORM TO A STRAIGHT LINE BEATING BETWEEN BENCHMARK POINTS.
 ELEVATIONS ARE IN FEET ABOVE U.S.C. & G.S. SEA LEVEL DATUM OF 1929.
 THIS DRAWING AND THE DATA HEREON ARE HEREBY MADE A PART OF THE SPECIFICATIONS.
 WORK SHALL BE CONSTRUCTED ACCORDING TO SPECIFICATIONS ON FILE IN THE OFFICE OF THE COUNTY ENGINEER AND SHALL BE PROSECUTED ONLY IN THE PRESENCE OF THE COUNTY ENGINEER.
 BEFORE WORK CAN BE STARTED, THE CONTRACTOR MUST OBTAIN A PERMIT TO EXCAVATE IN COUNTY STREETS FROM THE L. A. COUNTY ROAD DEPT., 108 W. 2ND ST. AND MAKE A REPORT WITH THE COUNTY ENGINEER, ROOM 324 PAM AMERICAN BLDG., 322 SO. BROADWAY SUFFICIENT TO COVER THE COST OF CONSTRUCTION INSPECTION AND RECORD PLANS.
 APPROVAL OF THIS PLAN BY THE COUNTY OF LOS ANGELES DOES NOT CONSTITUTE A REPRESENTATION AS TO THE ACCURACY OF THE LOCATION OF OR THE EXISTENCE OR NON-EXISTENCE OF ANY UNDERGROUND UTILITY PIPE, OR STRUCTURE WITHIN THE LIMITS OF THIS PROJECT THE NOTE APPLIES TO ALL RANGES.
 IF WORK IS TO BE DONE IN A STATE HIGHWAY, A PERMIT MUST BE OBTAINED FROM THE STATE OF CALIFORNIA, DIVISION OF HIGHWAYS, 126 SOUTH SPRING STREET.

COUNTY OF LOS ANGELES, CALIFORNIA
 APPROVED, JOHN A. LAMBE, COUNTY ENGINEER
 APPROVED, A. M. RAWAL, CHIEF ENGINEER
 CO. AM. ENG. NO. 5
 BY: *L. H. Hughes* SANITATION ENGINEER
 BY: *A. M. Rawal* CHIEF ENGINEER
 CHECKED BY: *W. H. P. ...*
 OFFICE OF COUNTY ENGINEER, REG. C. E. NO. 10,632

The contractor shall notify the construction and start-up division by telephone, Madison 24747, Ext. 307, at least 24 hours before starting any work under this contract.



P.C. 4619 PAGE 2
 CONNECTION CHARGES
 AS INDICATED
 (26,099)



P. 39