

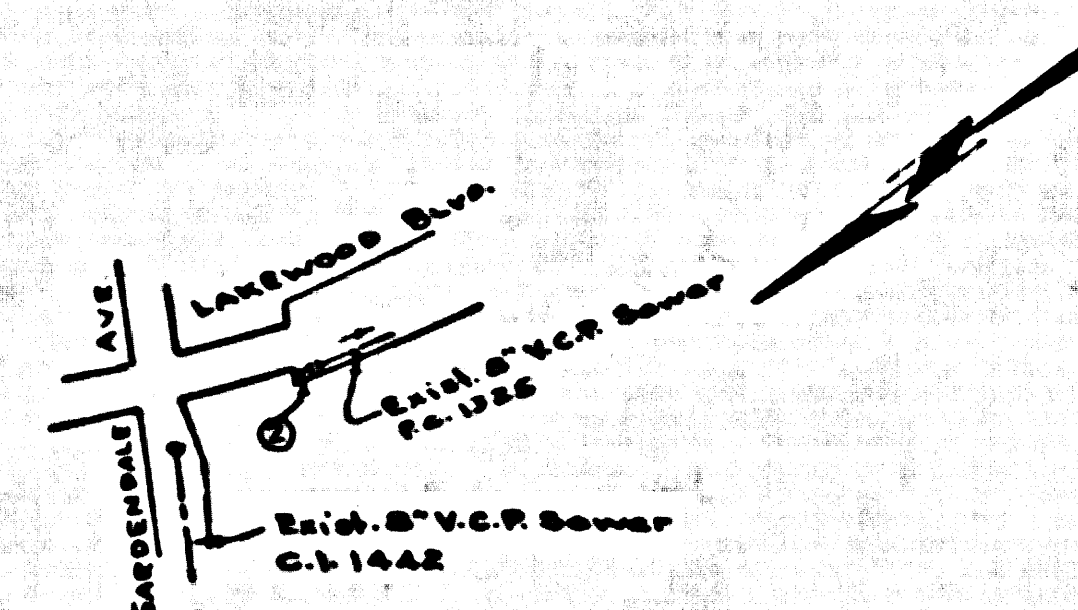
B.M. Rd. Dept 54 2080 Elev. 91.061
Lakewood Blvd. & Gardendale St. N.E. Corner
L.&T. in curb 10.8' North of curb return.

No Charge For
Connection
S. Rueda 11-14-57

DOWNEY BLDG. DIST. NO. 4.02

- NOTES:**
PROVIDE STAKES ON THE PROPERTY LINE OR PROPERTY LINES PRODUCED AT RIGHT ANGLES TO THE SEWER LINE AT THE CENTER LINE OF EACH MANHOLE.
NO REPRESENTATIVE OF THE CITY ENGINEER WILL SURVEY OR LAYOUT ANY PORTION OF THE WORK.
THE OWNER OR HIS AUTHORIZED REPRESENTATIVE SHALL FURNISH THE CITY ENGINEER WITH GRAB SHEETS AND STATION FOR ALL HOUSE LATERALS AND Y BRANCHES AND SHALL PROVIDE STAKES FOR THESE AT THEIR PROPER LOCATIONS WITH STATIONING PLAINLY MARKED. ANY CHANGE IN LOCATION SHALL BE REQUESTED IN WRITING BY THE OWNER OR HIS REPRESENTATIVE.
NO REVISIONS SHALL BE MADE IN THESE PLANS WITHOUT THE APPROVAL OF THE CITY ENGINEER.
1. USE STANDARD MANHOLE FRAMES AND COVERS, S-A-117, EXCEPT AS NOTED.
 2. USE STANDARD STRENGTH PIPE EXCEPT AS NOTED.
 3. USE CEMENT MORTAR FOR ALL VITRIFIED CLAY PIPE JOINTS.
 4. RESURFACE ALL TRENCH WITHIN PAVED AREA TO MEET L. A. COUNTY ROAD DEPT. OR CALIF. STATE HIGHWAY DEPT. REQUIREMENTS IN ACCORDANCE WITH PERMITS.
 5. EXCAVE FOUR FEET OF SEWER AT POINTS OF INTERFERENCE WITH POLES, S-A-119.
 6. HOUSE LATERALS TO BE CONSTRUCTED WITHIN DRIVEWAYS AT POINTS OF INTERFERENCE WITH POLES, S-A-119.
 7. ALL STRUCTURES SHALL BE BRICK SEWER STRUCTURES, S-A-104, EXCEPT AS NOTED.
 8. FOR ALLOWABLE SEWERAGE TEST USE FORMULA NO. 1 SPEC. SEC. 84.
 9. MANHOLE TOPS IN UNIMPROVED RIGHTS-OF-WAY TO BE 6" ABOVE FINISHED GRADE.

NOTE:
THE CONTRACTOR SHALL NOTIFY THE CONSTRUCTION AND STORM DRAIN DIVISION BY TELEPHONE MADISON 9-747, EXT. 362, AT LEAST 24 HOURS BEFORE STARTING ANY WORK UNDER THIS CONTRACT.



INDEX MAP
Scale - 1" = 500'
P.C. 4625

PROFILE ALIGNMENT AND GRADE OF **P.C. 4625**
SANITARY SEWERS PAGE 1
TO BE CONSTRUCTED IN

LAKWOOD BLVD.

PRIVATE CONTRACT NO. 4625

W.S. 32

1 SHEET, 2 PAGES

25,289

SCALE: VERT. 1" = 4' HORIZ. 1" = 40'

NOVEMBER, 1957

PREPARED BY THE OFFICES OF

OLSON SURVEYING SERVICE

Carl A. Olson
REG. C. E. NO. 1882

FOR LEGEND SEE PLAN NO. S-A-64

NOTES:
GRADES TO WHICH THIS IMPROVEMENT IS TO BE CONSTRUCTED ARE SHOWN ON PLANS AND PROFILE. GRADE POINTS FOR TOP OF CURB, CENTER LINE OF STREETS, OR CENTER LINE OF ALLEYS ARE SHOWN BY CIRCLES ON PROFILES AT ALL POINTS BETWEEN MANHOLE POINTS. THE GRADE SHALL BE ESTABLISHED SO AS TO CONFORM TO A STRAIGHT LINE DRAWN BETWEEN SAID BENCHMARK POINTS.
ELEVATIONS ARE IN FEET ABOVE U.S.C. & G.S. SEA LEVEL DATUM OF 1929.
THIS DRAWING AND THE DATA HEREON ARE HEREBY MADE A PART OF THE SPECIFICATIONS.
WORK SHALL BE CONSTRUCTED ACCORDING TO SPECIFICATIONS ON FILE IN THE OFFICE OF THE CITY ENGINEER AND SHALL BE PROSECUTED ONLY IN THE PRESENCE OF THE CITY ENGINEER.
BEFORE WORK CAN BE STARTED, THE CONTRACTOR MUST OBTAIN A PERMIT TO EXCAVATE IN CITY STREETS FROM THE L. A. COUNTY ROAD DEPT., 126 W. 2ND ST. AND MAKE A DEPOSIT WITH THE CITY ENGINEER, ROOM 201 PAN AMERICAN BUILDING, 210 SO. BROADWAY SUFFICIENT TO COVER THE COST OF CONSTRUCTION INSPECTION AND RECORD PLANS.
APPROVAL OF THIS PLAN BY THE CITY OF DOWNEY DOES NOT CONSTITUTE A REPRESENTATION AS TO THE ACCURACY OF THE LOCATION OF OR THE EXISTENCE OR NON-EXISTENCE OF ANY UNDISCOVERED UTILITY PIPE, OR STRUCTURE WITHIN THE LIMITS OF THIS PROJECT. THIS NOTE APPLIES TO ALL PAGES.
IF WORK IS TO BE DONE IN A STATE HIGHWAY, A PERMIT MUST BE OBTAINED FROM THE STATE OF CALIFORNIA, DIVISION OF HIGHWAYS, 120 SOUTH SPRING STREET.

CITY OF DOWNEY, CALIFORNIA

APPROVED, JOHN A. LAMBE, CITY ENGINEER

APPROVED, A. M. BAWN, CHIEF ENGINEER

BY *J. J. Brannan* ASST. SANITATION ENGINEER

BY *J. J. Brannan* OFFICE ENGINEER

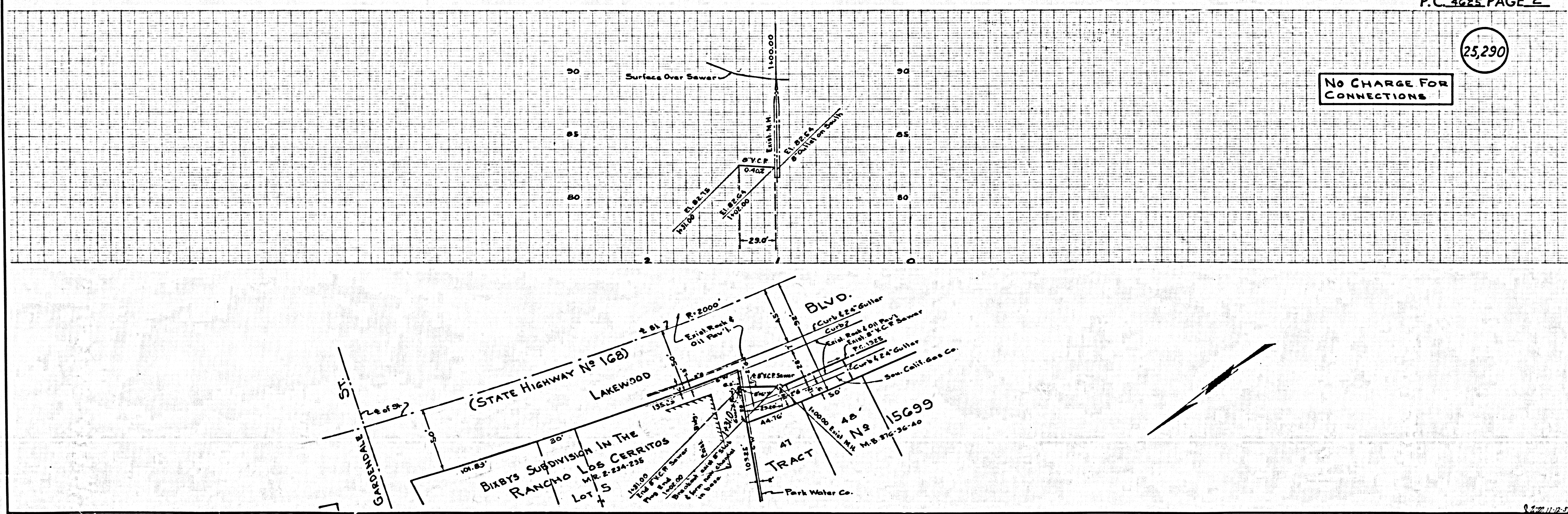
CHECKED BY *John J. Eaton* 11-14-57

OFFICE OF CITY ENGINEER, REG. C. E. NO. 3811

P.C. 4625 PAGE 2

25,290

No Charge For
Connections



J. J. Brannan 11-14-57