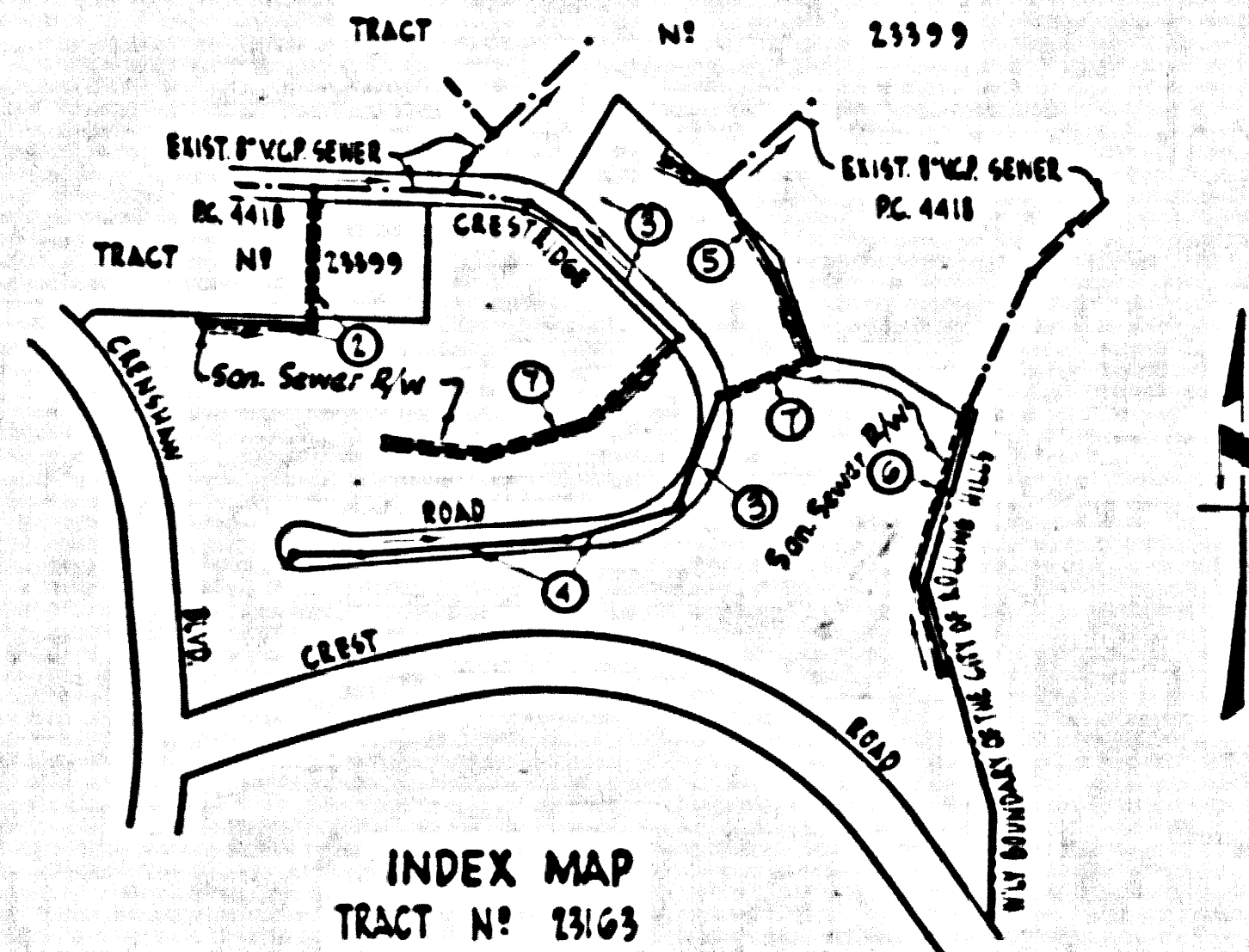


BM = N.E. cor. Crenshaw Blvd. & Crest Rd. 91.5' Ely from center of pvt. and 40' Nly from center of pvt. under guy cable 95.5' N.E. of power pole # 1036498. 5/4. C.S. Mon. stamped "B.M. 50.7 1950 RE 5169 in 12" conc. pipe. 1959 Adj. Elev. 1101.958 FB 1400, pg. 15



NO CHARGE FOR CONNECTIONS  
7/27 C. Lewis 6-20-58

LOMITA BLDG. DIST. NO. 7.1

- NOTE:  
PROVIDE 5" SIZES ON THE PROPERTY LINE OR PROPERTY LINES PRODUCED AT RIGHT ANGLES TO THE SEWER LINE AT THE CENTER LINE OF EACH MANHOLE.
- NO REPRESENTATIVE OF THE COUNTY ENGINEER SHALL SURVEY OR LAY OUT ANY PORTION OF THE WORK.
- THE OWNER OR HIS AUTHORIZED REPRESENTATIVE SHALL FURNISH THE COUNTY ENGINEER WITH GRADE SHEETS AND STATION FOR ALL HOUSE LATERALS AND Y BRANCHES AND SHALL PROVIDE STAKES FOR THEM AT THEIR PROPER LOCATIONS WITH STATION-ING AND PLAINS MARKED. ANY CHANGE IN LOCATION SHALL BE REQUESTED IN WRITING BY THE OWNER OR HIS REPRESENTATIVE.
- NO REVISIONS SHALL BE MADE IN THESE PLANS WITHOUT THE APPROVAL OF THE COUNTY ENGINEER.
1. USE STANDARD MANHOLE FRAMES AND COVERS, S-A-117, 1' AT 100#.
  2. USE STANDARD STRENGTH PIPE EXCEPT AS NOTED.
  3. USE CEMENT MORTAR OR "INCLOSURE-LOCK" OR "SPEED-BEAL" FOR ALL VITRIFIED CLAY PIPE JOINTS PER S-P-C-2, S-E-C-7, 24 & 44.
  4. RESURFACE AS FINISH WITHIN PAVED AREA TO MEET L. A. COUNTY ROAD DEPT., OR CALIF. STATE HIGHWAY DEPT. REQUIREMENTS IN ACCORDANCE WITH PLANS.
  5. ENCASE POLE HOUSING AT POINTS OF INTERFERENCE WITH POLES, S-A-119.
  6. HOUSE LATERALS TO BE CONSTRUCTED WITHIN PROPERTY LINE 6" PER INCH CURB GRADE EXCEPT AS NOTED.
  7. ALL STRUCTURES SHALL BE BRICK WITH STRUCTURES, S-A-104.
  8. FOR ALLOWABLE LEAKAGE TEST USE FORMULA NO. 1, S-P-C-2, S-E-C. 54.
  9. MANHOLE TOPS IN UNIMPROVED AREAS TO BE 6" ABOVE FINISHED GRADE.
  10. THE PRIVATE ENGINEER IS TO FURNISH THE HOME LATERAL SEWER AT THE PROPERTY LINE SHOWING THE TOP OF CURB ELEVATION FOR EACH HOUSE LATERAL ON THE GRADE SHEET.
  11. THE CONTRACTOR SHALL NOTIFY THE CONSTRUCTION AND STORM DRAIN DIVISION BY TELEPHONE, BARRON 5-8147, EXT. 505, AT LEAST 24 HOURS BEFORE STARTING ANY WORK UNDER THIS CONTRACT.

PROFILE ALIGNMENT AND GRADE OF P.C. 4630  
SANITARY SEWERS PAGE 1

TRACT NO. 23163 (26740)

PRIVATE CONTRACT NO. 4630

W.S. 17  
4 SHEETS, 7 PAGES

SCALE: VERT. 1" = 5' HORIZ. 1" = 40' OCTOBER, 1957

PREPARED IN THE OFFICES OF

ENGINEERING SERVICE CORPORATION

By: *E. F. Young* REG. C. E. NO. 1521

FOR LEGEND SEE PLAN NO. S-A-64

NOTE:  
GRADES TO WHICH THIS IMPROVEMENT IS TO BE CONSTRUCTED ARE SHOWN ON PLANS AND PROFILES. GRADE POINTS FOR TOP OF CURB, CENTER LINE OF STREET, OR CENTER LINE OF ALLEYS ARE SHOWN BY CIRCLES ON PROFILE AT ALL POINTS BETWEEN DESIGNATED POINTS. THE GRADE SHALL BE ESTABLISHED AS TO CONFORM TO A STRAIGHT LINE BEHIND SAID DESIGNATED POINTS.

ELEVATIONS ARE IN FEET ABOVE U.S.C. & G.S. SEA LEVEL DATUM OF 1929.

THIS DRAWING AND THE DATA HEREON ARE HEREBY MADE A PART OF THE SPECIFICATIONS.

WORK SHALL BE CONSTRUCTED ACCORDING TO SPECIFICATIONS ON FILE IN THE OFFICE OF THE COUNTY ENGINEER AND SHALL BE PROCURED ONLY IN THE PRESENCE OF THE COUNTY ENGINEER.

BEFORE WORK CAN BE STARTED, THE CONTRACTOR MUST OBTAIN A PERMIT TO EXCAVATE IN COUNTY SHEETS FROM THE L. A. COUNTY ROAD DEPT., DISTRICT 11E AND MAKE A DEPOSIT WITH THE COUNTY ENGINEER, ROOM 234 SAN AMERICAN BUILDING, 333 SO. BROADWAY SUFFICIENT TO COVER THE COST OF CONSTRUCTION INSPECTION AND RECORD PLANS.

APPROVAL OF THIS PLAN BY THE COUNTY OF LOS ANGELES DOES NOT CONSTITUTE A REPRESENTATION AS TO THE ACCURACY OF THE LOCATION OF OR THE EXISTENCE OR NON-EXISTENCE OF ANY UNDERGROUND UTILITY PIPE, OR STRUCTURE WITHIN THE LIMITS OF THE PROJECT THIS NOTE APPLIES TO ALL PAGES.

IF WORK IS TO BE DONE BY A STATE HIGHWAY, A PERMIT MUST BE OBTAINED FROM THE STATE OF CALIFORNIA, DIVISION OF HIGHWAYS, 120 SOUTH BRIDGE STREET.

ENGINEERING SERVICE CORPORATION 1127 W. WASHINGTON BLVD. LOS ANGELES 15 CALIF. RI. 9-7281	
REVISIONS	TRACED BY: JR.
	DES'G'D BY: BB.
	CK'D BY: JAP.
	SUBMITTED: MB.
SUB STRUCTURES OK'D	
W. O. NO.	DWS. NO.
6450-7	
DATE	SCALE
OCT. 1957	1" = 40'
L. S.	P. S.
	11/57

COUNTY OF LOS ANGELES, CALIFORNIA

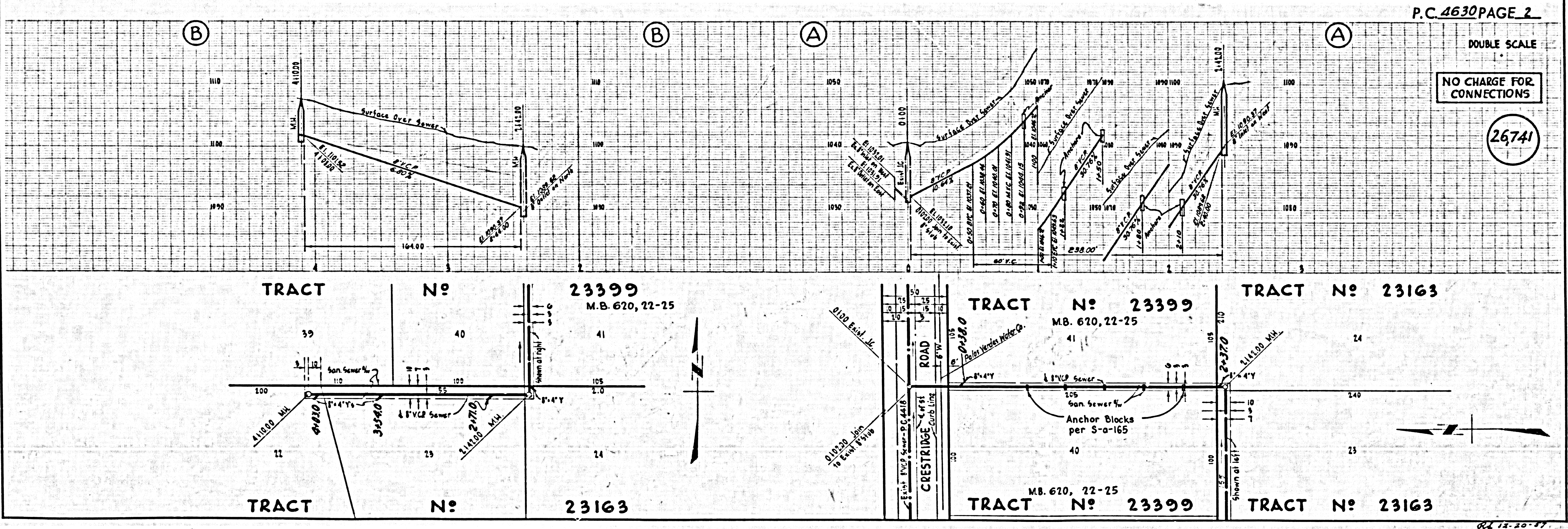
APPROVED, JOHN A. LAMBE, COUNTY ENGINEER

APPROVED, A. M. BAYNE, CHIEF ENGINEER

BY: *E. F. Young* SANITATION ENGINEER

CHECKED BY: *J. A. ...* OFFICE ENGINEER

OFFICE OF COUNTY ENGINEER, REG. C. E. NO. 2506







(A) DOUBLE SCALE

26,746

NO CHARGE FOR CONNECTIONS

