

**PUENTE BLDG. DIST. NO. 2**

PROFILE ALIGNMENT AND GRADE OF **P.C. 4632**  
**SANITARY SEWERS** PAGE **1**  
 TO BE CONSTRUCTED IN

**TRACT NO 23861**  
**PRIVATE CONTRACT NO. 4632**

W.S. 38  
 3 SHEETS, 6 PAGES

SCALE: VERT. 1"=4' NOVEMBER, 1957

26,369

PREPARED IN THE OFFICES OF  
**A. RICHARD BROWN, J.E.C.**  
 7632 COMMONWEALTH AVE., BUENA VISTA, CALIF.  
 LAWRENCE 2-2333 (C)  
 BY *A. Richard Brown*  
 REG. C. E. NO. 2882

FOR LEGEND SEE PLAN NO. S-A-64

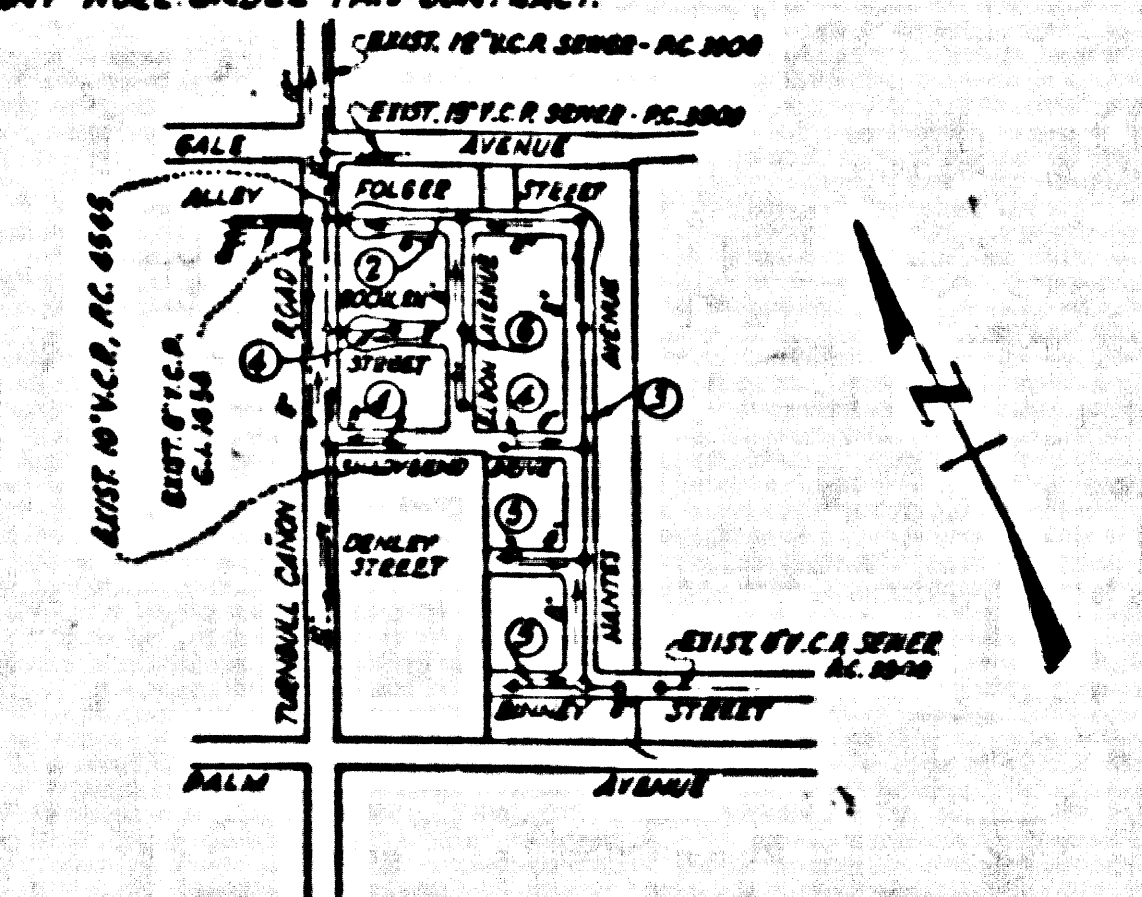
**NOTE:**  
 GRADES TO WHICH THIS IMPROVEMENT IS TO BE CONSTRUCTED ARE SHOWN ON PLANS AND PROFILE. GRADE POINTS FOR TOP OF CURB, CENTER LINE OF STREETS, OR CENTER LINE OF ALLEYS ARE SHOWN BY CIRCLES ON PROFILES. AT ALL POINTS BETWEEN DESIGNATED POINTS THE GRADE SHALL BE ESTABLISHED SO AS TO CONFORM TO A STRAIGHT LINE DRAWN BETWEEN SAID DESIGNATED POINTS.  
 ELEVATIONS ARE IN FEET ABOVE U. S. C. & G. S. MEAN SEA LEVEL DATUM OF 1929.  
 THIS DRAWING AND THE DATA HEREON ARE HEREBY MADE A PART OF THE SPECIFICATIONS.  
 WORK SHALL BE CONSTRUCTED ACCORDING TO SPECIFICATIONS ON FILE IN THE OFFICE OF THE COUNTY ENGINEER AND SHALL BE INSPECTED ONLY BY THE PRESENCE OF THE COUNTY ENGINEER.  
 BEFORE WORK CAN BE STARTED, THE CONTRACTOR MUST OBTAIN A PERMIT TO EXCAVATE IN COUNTY STREETS FROM THE L. A. COUNTY ROAD DEPT., DIST. NO. 1 AND MAKE A DEPOSIT WITH THE COUNTY ENGINEER, ROOM 304 SAN AMERICAN BUILDING, 333 SO. BROADWAY SUFFICIENT TO COVER THE COST OF CONSTRUCTION INSPECTION AND INCOME PLANS.  
 APPROVAL OF THIS PLAN BY THE COUNTY OF LOS ANGELES DOES NOT CONSTITUTE A REPRESENTATION AS TO THE ACCURACY OF THE LOCATION OF OR THE EXISTENCE OR NON-EXISTENCE OF ANY UNDERGROUND UTILITY PIPE, OR STRUCTURE WITHIN THE LIMITS OF THIS PROJECT. THIS NOTE APPLIES TO ALL PAGES.  
 IF WORK IS TO BE DONE IN A STATE HIGHWAY, A PERMIT MUST BE OBTAINED FROM THE STATE OF CALIFORNIA, DIVISION OF HIGHWAYS, 128 SOUTH SPRING STREET.

**COUNTY OF LOS ANGELES, CALIFORNIA**  
 APPROVED, JOHN A. LAMBE, COUNTY ENGINEER  
 APPROVED, A. M. BAWN, CHIEF ENGINEER  
 BY *A. R. Brown* SANITATION ENGINEER  
 CHECKED BY *A. R. Brown* 2-12-58  
 OFFICE OF COUNTY ENGINEER, 300 C. & G. BLDG.

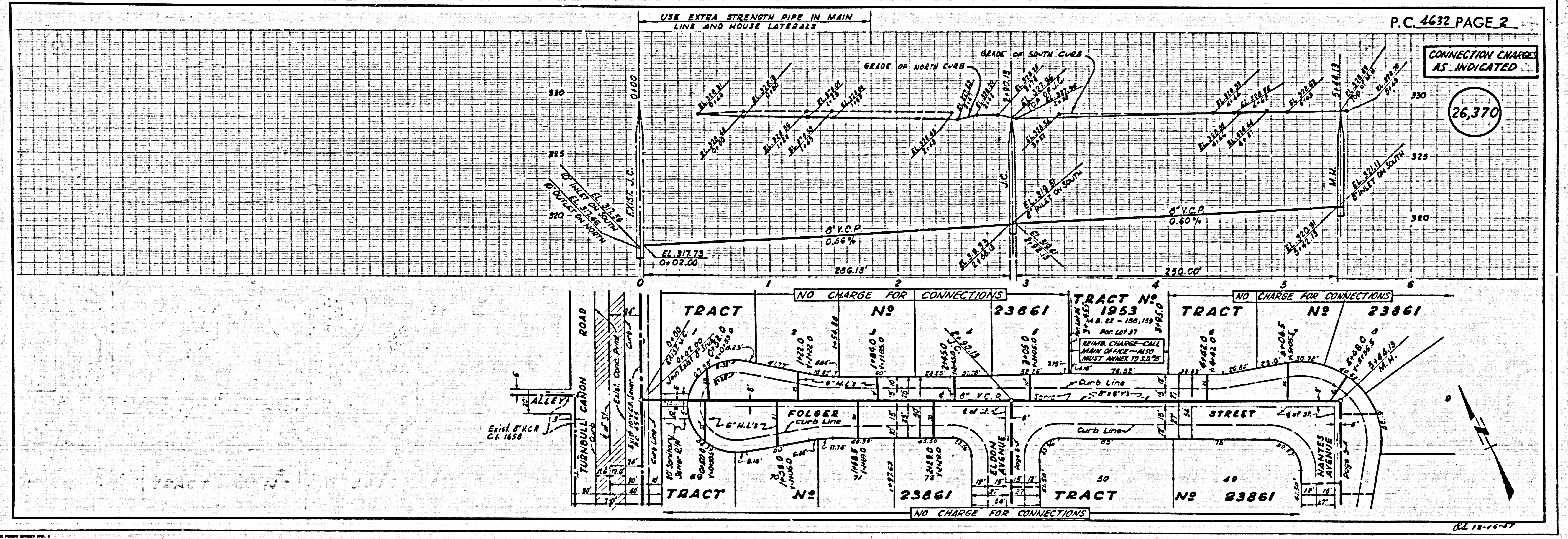
**BENCH MARK S.G. 1337**  
 1.57' S. of Curb Return  
 at N.E. Corner Gale Avenue  
 and Turnbull Canon Road.  
 (Base Line)  
 ELEV. 325.493 (1955 Adj.)

**CONNECTION CHARGES AS INDICATED**  
 7-77 C. Brown 9-11-59

- NOTES:**
- PROVIDE STAKES ON THE PROPERTY LINE OR PROPERTY LINES PRODUCED AT RIGHT ANGLES TO THE SEWER LINE AT THE CENTER LINE OF EACH MANHOLE.
  - NO REPRESENTATIVE OF THE COUNTY ENGINEER WILL SURVEY OR LAYOUT ANY PORTION OF THE WORK.
  - THE OWNER OR HIS AUTHORIZED REPRESENTATIVE SHALL FURNISH THE COUNTY ENGINEER WITH GRADE SHEETS AND STATION FOR ALL HOUSE LATERALS AND Y BRANCHES AND SHALL PROVIDE STAKES FOR THEM AT THEIR PROPER LOCATIONS WITH STATIONING PLAINLY MARKED. ANY CHANGE IN LOCATION SHALL BE REQUESTED IN WRITING BY THE OWNER OR HIS REPRESENTATIVE.
  - NO IMPROVEMENTS SHALL BE MADE IN THESE PLANS WITHOUT THE APPROVAL OF THE COUNTY ENGINEER.
  - USE STANDARD MANHOLE FRAMES AND COVERS, S.A-117.
  - USE STANDARD STRENGTH PIPE EXCEPT AS NOTED.
  - USE CEMENT MORTAR "THROE-LOCK" OR "SOLE-SEAL" FOR ALL K.C.P. JOINTS PER SPECS., SECS. 36 & 48.
  - RESURFACE ALL TRENCH WITHIN PAVED AREA TO MEET L. A. COUNTY ROAD DEPT. OR CALIF. STATE HIGHWAY DEPT. REQUIREMENTS IN ACCORDANCE WITH PERMITS.
  - INDICATE FOUR FEET OF SEWER AT POINTS OF INTERFERENCE WITH POLES, S.A-178, 227.
  - HOUSE LATERALS TO BE CONSTRUCTED WITH INVERTS AT PROPERTY LINE, 5' FEET BELOW CURB GRADE.
  - ALL STRUCTURES SHALL BE BRICK SEWER STRUCTURES, S.A-104.
  - FOR ALLOWABLE LEAKAGE TEST USE FORMULA NO. 1 SPECS., SEC. 34.
  - MANHOLE TOPS IN UNIMPROVED HIGHWAYS OR WAYS TO BE 6" ABOVE FINISHED GRADE.
  - THE COUNTY ENGINEER IS TO FURNISH THE HOUSE LATERAL DEPTH AT THE PROPERTY LINE BELOW THE TOP OF CURB ELEVATION FOR EACH HOUSE LATERAL ON THE GRADE SHEET.
  - THE CONTRACTOR SHALL NOTIFY THE CONSTRUCTION AND STORM DRAIN DIVISION BY TELEPHONE, SECTION 81761, S.T. 861, AT LEAST 24 HOURS BEFORE STARTING ANY WORK UNDER THIS CONTRACT.



**INDEX MAP**  
 SCALE: 1"=600'  
 TRACT NO 23861  
 P.C. 4632



P.C. 4632 PAGE 2

**CONNECTION CHARGES AS INDICATED**

26,370

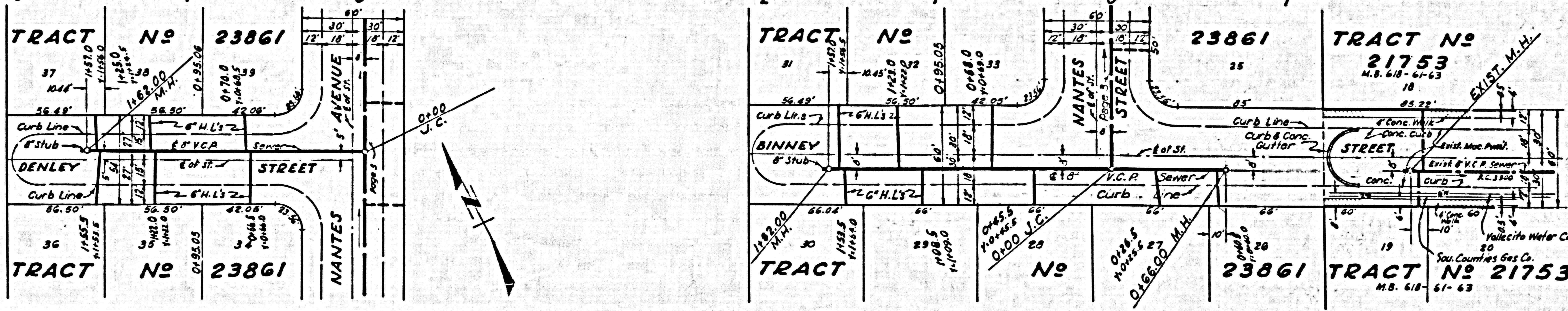
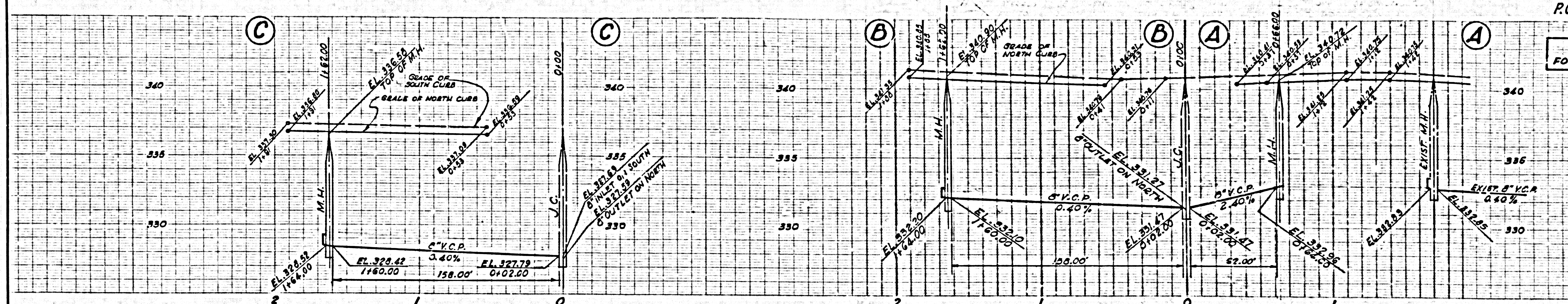
Oct 12-16-57

P.C. 4632-1



NO CHARGE FOR CONNECTIONS

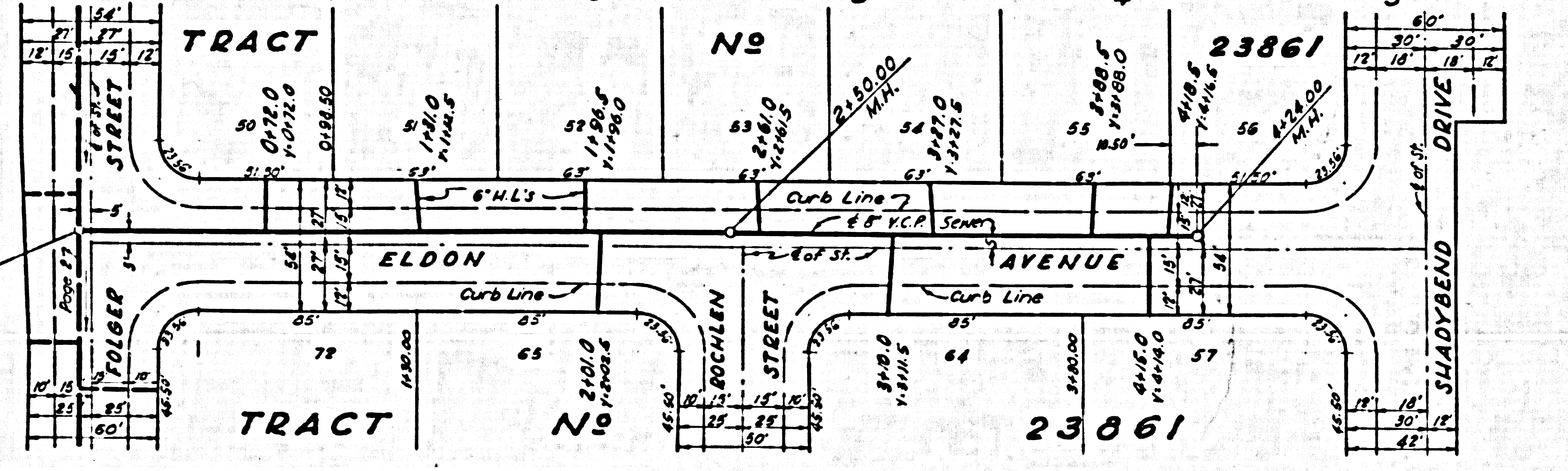
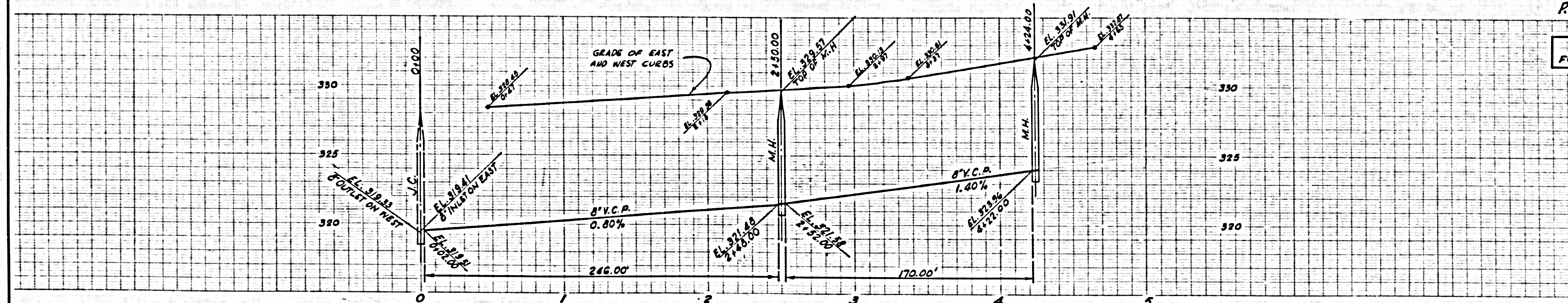
26,373



PA 12-16-57

NO CHARGE FOR CONNECTIONS

26,374



PA 12-16-57