

B.M. 56 677 Elev. 393.639
 1/4 E of Curb at Broadway
 1/4 E of Curb at S.E. Cor.
 Broadway & La Pressa Ave.

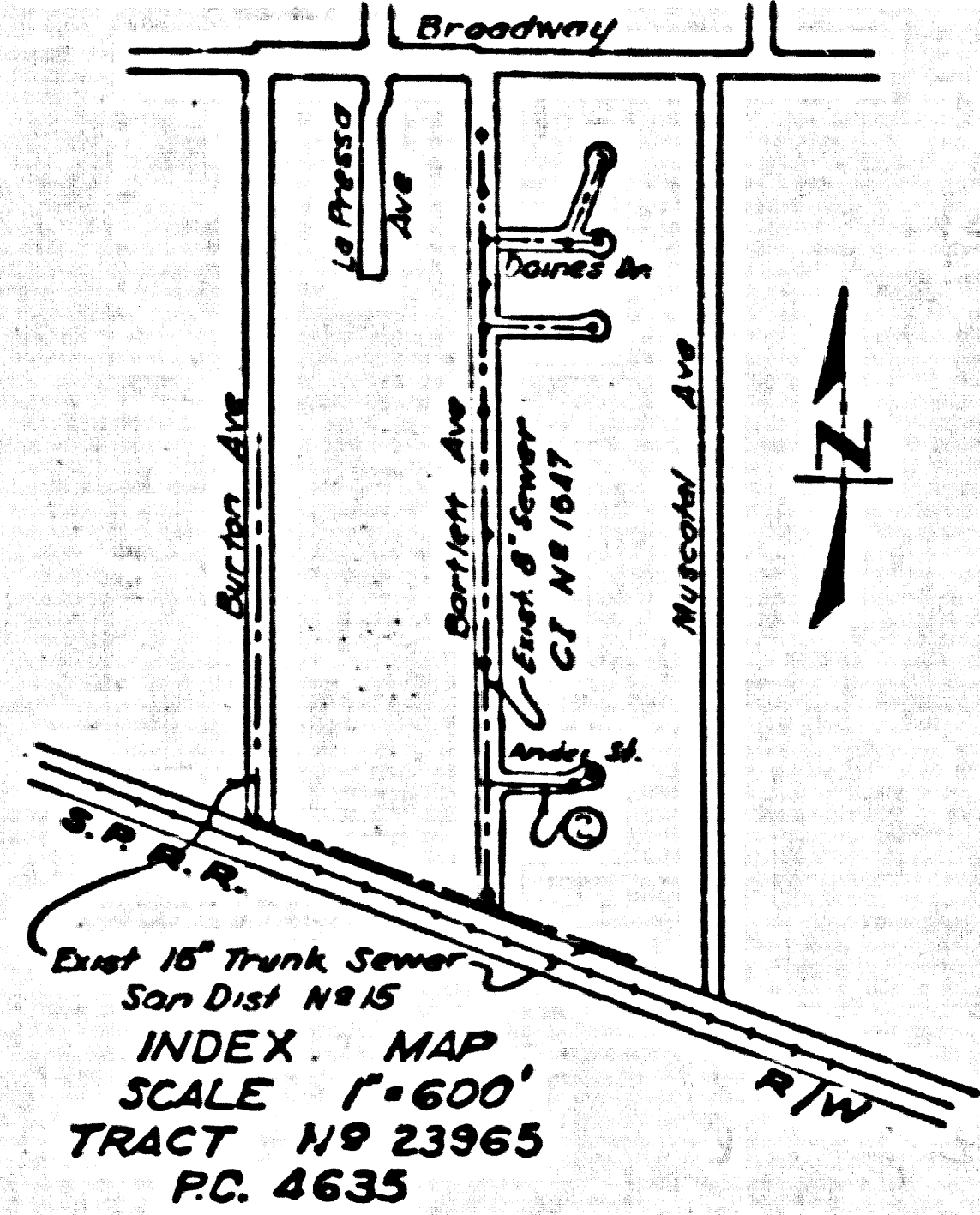
INDEX TABLE	
SHEETS	PAGES
1	2

NOTE:
 THE CONTRACTOR SHALL NOTIFY THE CONSTRUCTION AND STORM DRAIN DIVISION BY TELEPHONE, MADISON 9-4747, EXT. 362, AT LEAST 24 HOURS BEFORE STARTING ANY WORK UNDER THIS CONTRACT.

NO CHARGE FOR CONNECTIONS
1-2-58

TEMPLE CITY BLDG. DIST. NO. 5

- NOTES:
- PROVIDE STAKES ON THE PROPERTY LINE OR PROPERTY LINES PRODUCED AT RIGHT ANGLES TO THE SEWER LINE AT THE CENTER LINE OF EACH MANHOLE.
 - NO REPRESENTATIVE OF THE COUNTY ENGINEER WILL SURVEY OR LAYOUT ANY PORTION OF THE WORK.
 - THE OWNER OR HIS REPRESENTATIVE SHALL FURNISH THE COUNTY ENGINEER WITH GRADE SHEETS AND STATION FOR ALL HOUSE LATERALS AND MANHOLES AND SHALL PROVIDE 1/4" RISE FOR THEM AT THEIR POINTS OF CONNECTION WITH STATIONED PLANNED MARKERS. ANY CHANGE IN LOCATION SHALL BE REQUESTED BY WRITING BY THE OWNER OR HIS REPRESENTATIVE.
 - NO REVISIONS SHALL BE MADE IN THESE PLANS WITHOUT THE APPROVAL OF THE COUNTY ENGINEER.
 - USE STANDARD MANHOLE FRAMES AND COVERS, S.A.-117, EXCEPT AS NOTED.
 - USE STANDARD STRUCTURE PIPE EXCEPT AS NOTED.
 - USE CEMENT MORTAR FOR ALL VITRIFIED CLAY PIPE JOINTS.
 - BRUSHING ALL TRENCH WITHIN PAVED AREA TO MEET L. A. COUNTY ROAD DEPT. OR CALIF. STATE HIGHWAY DEPT. REQUIREMENTS IN ACCORDANCE WITH SPECIFICATIONS.
 - INDICATE FOUR FEET OF SEWER AT POINTS OF INTERFERENCE WITH POLES, CASE NO. S-12-172.
 - HOUSE LATERALS TO BE CONSTRUCTED WITH INVERTS AT PROPERTY LINE. 1/4" RISE SHOW CURB @ LINE EXCEPT AS NOTED.
 - ALL STRUCTURES SHALL BE BRICK SEWER STRUCTURES, S.A.-104, EXCEPT AS NOTED.
 - FOR ALLOWABLE LEAKAGE USE FORMULA NO. 1 UNLESS SPEC. SEC. 24.
 - MANHOLE TOPS IN UNIMPROVED AREAS TO BE 6" ABOVE FINISHED GRADE.
 - THE PRIVATE ENGINEER SHALL FURNISH THE HOUSE LATERAL DEPTH AT THE PROPERTY LINE BELOW THE TOP OF CURB ELEVATION FOR EACH HOUSE LATERAL ON THE GRADE SHEET.



PROFILE ALIGNMENT AND GRADE OF P.C. 4635
 SANITARY SEWERS PAGE 1
 TO BE CONSTRUCTED IN

TRACT NO. 23965
 PRIVATE CONTRACT NO. 4635

W.S. 44
 1 SHEET, 2 PAGES
 SCALE: HORIZ. 1" = 40' VERT. 1" = 4'

OCTOBER, 1957
 PREPARED IN THE OFFICES OF
 WESTERN ENGINEERING &
 CONSTRUCTION CO.

BY *John H. Orison*
 REG. C. E. NO. 3315
 FOR LEGEND SEE PLAN NO. S-A-64

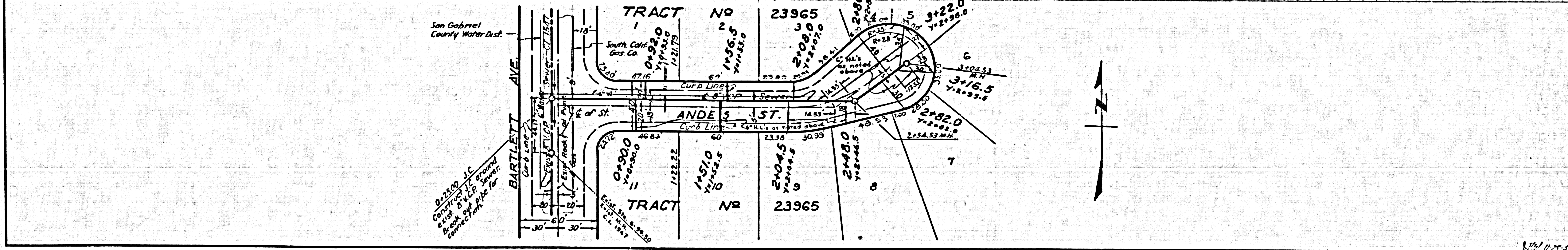
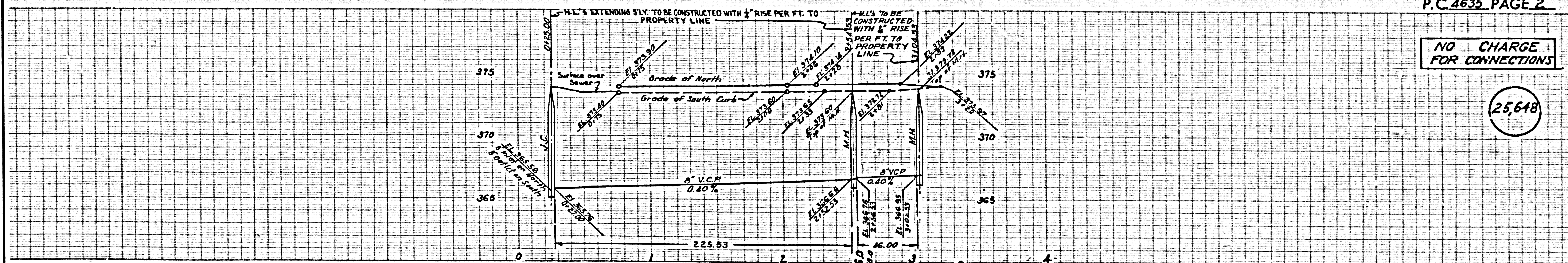
NOTES:
 GRADES TO WHICH THE IMPROVEMENT IS TO BE CONSTRUCTED ARE SHOWN ON PLANS AND PROFILES. GRADE POINTS FOR TOP OF CURB, CENTER LINE OF STREET, OR CENTER LINE OF ALLEYS ARE SHOWN BY CIRCLES ON PROFILES. AT ALL POINTS BETWEEN INDICATED POINTS THE GRADE SHALL BE ESTABLISHED TO A STRAIGHT LINE DRAWN BETWEEN SAID INDICATED POINTS.
 ELEVATIONS ARE IN FEET ABOVE U.S.C. & G.S. MEAN SEA LEVEL, DATUM OF 1929.
 THIS DRAWING AND THE DATA HEREON ARE HEREBY MADE A PART OF THE SPECIFICATIONS.
 WORK SHALL BE CONSTRUCTED ACCORDING TO SPECIFICATIONS ON FILE IN THE OFFICE OF THE COUNTY ENGINEER AND SHALL BE PROSECUTED ONLY IN THE PRESENCE OF THE COUNTY ENGINEER.
 BEFORE WORK CAN BE STARTED, THE CONTRACTOR MUST OBTAIN A PERMIT TO OCCUPY THE COUNTY STREETS FROM THE L. A. COUNTY ROAD DEPT., 108 W. 2ND ST. AND MAKE A REPORT WITH THE COUNTY ENGINEER, ROOM 224 PAM AMERICAN BLDG., 333 SO. BROADWAY. SUFFICIENT TO COVER THE COST OF CONSTRUCTION INSPECTION AND RECORD PLANS.
 APPROVAL OF THIS PLAN BY THE COUNTY OF LOS ANGELES DOES NOT CONSTITUTE A REPRESENTATION AS TO THE ACCURACY OF THE LOCATION OF OR THE EXISTENCE OR NON-EXISTENCE OF ANY UNRECORDED UTILITY PIPES, OR STRUCTURE WITHIN THE LIMITS OF THIS PROJECT. THIS NOTE APPLIES TO ALL PAGES.
 IF WORK IS TO BE DONE IN A STATE HIGHWAY, A PERMIT MUST BE OBTAINED FROM THE STATE OF CALIFORNIA, DIVISION OF HIGHWAYS, 120 SOUTH BRIDGE STREET.

COUNTY OF LOS ANGELES, CALIFORNIA
 APPROVED, JOHN A. LAMME, COUNTY ENGINEER
 APPROVED, A. H. RAWNS, CHIEF ENGINEER
 BY *A. H. Rawns* SANITATION ENGINEER
 BY *J. H. Orison* OFFICE ENGINEER
 CHECKED BY *J. H. Orison*
 OFFICE OF COUNTY ENGINEER, REG. C. E. NO. 2466

P.C. 4635 PAGE 2

NO CHARGE FOR CONNECTIONS

25,648



J.C.

MH MH

P.C. 4635