

AM-SY 4038, Elev. 146.191, C.S. P. 18334
 L. & B. Nat'l West Curb Luthwiler
 Avenue, 100' S. of Whitelock
 Drive Opp. P.D. #103380 E

- NOTES: CONT'D.
- (A) NO CONSTRUCTION WILL BE PERMITTED IN FILLED AREAS UNLESS ACCEPTABLE CERTIFICATION IS SUBMITTED TO THE CONSTRUCTION DIVISION OF THE COUNTY ENGINEER'S DEPARTMENT THAT THE COMPACTION IS GREATER THAN 90%.
 - (B) IF COMPACTION IS LESS THAN 90%, THE SEWER MUST BE CRADLED AS SHOWN ON PLANS.
 - (C) IF COMPACTION IS GREATER THAN 90%, CRADLING OR SPECIAL MANHOLE BASES ARE NOT REQUIRED. HOWEVER, JOINT COMPOUND MUST BE SUBSTITUTED FOR ALL JOINTS OF CEMENT MORTAR IN FILLED AREAS.
12. ALL VITRIFIED CLAY PIPE MAIN LINE SEWER CROSSING STORM DRAIN, NOT OTHERWISE CRADLED, SHALL BE CRADLED PER S-4-172, CASE III.

INDEX TABLE

SHEETS	PAGES
3	5

CONNECTION CHARGES
 AS INDICATED

NORWALK BLDG. DIST. NO. 4.2

PROFILE ALIGNMENT AND GRADE OF P.C. 4636
 SANITARY SEWERS PAGE 1
 TO BE CONSTRUCTED IN

TRACT NO. 23378 (26,696)
 PRIVATE CONTRACT NO. 4636

W.S. 34
 3 SHEETS, 5 PAGES

SCALE: VERT. 1" = 4' FEBRUARY, 1957

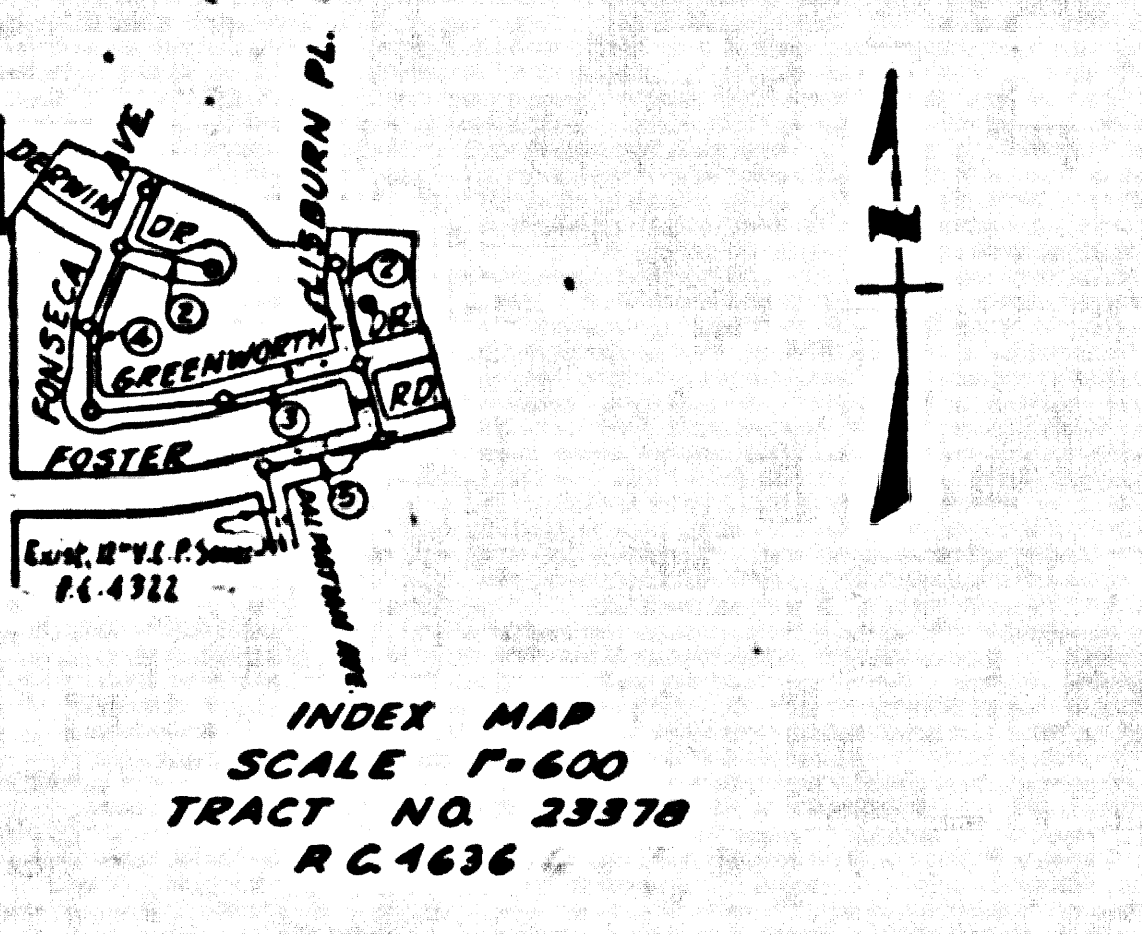
PREPARED IN THE OFFICES OF
JENNINGS ENGINEERING CO.
 3219 N. PICO BLVD., LOS ANGELES 35, CALIF.

REG. C. E. NO. 8723

FOR LEGEND SEE PLAN NO. S-A-64

- NOTES:
- PROVIDE STAKES ON THE PROPERTY LINE OR PROPERTY LINES INDICATED AT RIGHT ANGLES TO THE CENTER LINE AT THE CENTER OF EACH MANHOLE.
 - NO REPRESENTATIVE OF THE COUNTY ENGINEER WILL SURVEY OR LAYOUT ANY PORTION OF THE WORK.
 - THE OWNER OR HIS AUTHORIZED REPRESENTATIVE SHALL FURNISH THE COUNTY ENGINEER WITH GRADE SHEETS AND STATION FOR ALL HOUSE LATERALS AND Y BRANCHES AND SHALL PROVIDE STAKES FOR THEM AT THEIR PROPER LOCATIONS WITH STATION AND PLAINLY MARKED. ANY CHANGE IN LOCATION SHALL BE REQUESTED IN WRITING BY THE OWNER OR HIS REPRESENTATIVE.
 - NO REVISIONS SHALL BE MADE IN THESE PLANS WITHOUT THE APPROVAL OF THE COUNTY ENGINEER.
 - USE STANDARD MANHOLE FRAMES AND COVERS, S-A-117.
 - USE CEMENT MORTAR "WEDGE-JOINT" OR "SPIDER-SEAL" FOR ALL VITRIFIED CLAY PIPE JOINTS, PER S.P.C.'S. SEC. 36148.
 - RESURFACE ALL TRENCHES WITHIN PAVED AREA TO MEET L. & B. COUNTY ROAD DEPT. OR CALIF. STATE HIGHWAY DEPT. REQUIREMENTS IN ACCORDANCE WITH PERMITS.
 - SHOULDER FOUR FEET OF SEWER AT POINTS OF INTERFERENCE WITH POLES, S-A-172, CASE III.
 - HOUSE LATERALS TO BE CONSTRUCTED WITH INVERTS AT PROPERTY LINE 6" FROM SHOW CURB GRADE EXCEPT AS NOTED.
 - ALL STRUCTURES SHALL BE BRICK SEWER STRUCTURES, S-A-104.
 - FOR ALLOWABLE LEAKAGE TEST USE FORMULA NO. 1 S.P.C. SEC. 36.
 - MANHOLE TOPS IN UNIMPROVED RIGHTS-OF-WAY TO BE 6" ABOVE FINISHED GRADE.
 - THE PRIVATE ENGINEER IS TO FURNISH THE HOUSE LATERAL DEPTH AT THE PROPERTY LINE BELOW THE TOP OF CURB ELEVATION FOR EACH HOUSE LATERAL ON THE GRADE SHEETS.

NOTE:
 THE CONTRACTOR SHALL NOTIFY THE CONSTRUCTION AND STORM DRAIN DIVISION BY TELEPHONE, MADISON 3-4747, EXT. 362, AT LEAST 24 HOURS BEFORE STARTING ANY WORK UNDER THIS CONTRACT.



WORKS TO WHICH THIS IMPROVEMENT IS TO BE CONSTRUCTED ARE SHOWN ON PLANS AND PROFILE. GRADE POINTS FOR TYPE OF CURB, CENTER LINE OF STREETS, OR CENTER LINE OF ALLEYS ARE SHOWN BY CIRCLES ON PROFILES AT ALL POINTS BETWEEN DESIGNATED POINTS THE GRADE SHALL BE ESTABLISHED SO AS TO CONFORM TO A STRAIGHT LINE DRAWN BETWEEN SAID DESIGNATED POINTS.

SEPARATIONS ARE IN FEET ABOVE U.S.C. AND U.S. SEA LEVEL DATUM OF 1929.

THIS DRAWING AND THE DATA HEREON ARE HEREBY MADE A PART OF THE SPECIFICATIONS.

WORK SHALL BE CONSTRUCTED ACCORDING TO SPECIFICATIONS ON FILE IN THE OFFICE OF THE COUNTY ENGINEER AND SHALL BE INSPECTED ONLY BY THE PRESENCE OF THE COUNTY ENGINEER.

BEFORE WORK CAN BE STARTED, THE CONTRACTOR MUST OBTAIN A PERMIT TO EXCAVATE IN COUNTY STREETS FROM THE L. & B. COUNTY ROAD DEPT. FILE NO. 4 AND MAKE A REPORT WITH THE COUNTY ENGINEER, ROOM 124 PARK AMERICAN BLDG., 333 S.D. BROADWAY SUFFICIENT TO COVER THE COST OF CONSTRUCTION INSPECTION AND RECORD PLANS.

APPROVAL OF THIS PLAN BY THE COUNTY OF LOS ANGELES DOES NOT CONSTITUTE A REPRESENTATION AS TO THE ACCURACY OF THE LOCATION OF OR THE EXISTENCE OR NON-EXISTENCE OF ANY UNDERGROUND UTILITY PIPE, OR STRUCTURE WITHIN THE LIMITS OF THIS PROJECT THE NOTE APPLIES TO ALL PAGES.

IF WORK IS TO BE DONE ON A STATE HIGHWAY, A PERMIT MUST BE OBTAINED FROM THE STATE OF CALIFORNIA, DIVISION OF HIGHWAYS, 120 SOUTH SPRING STREET.

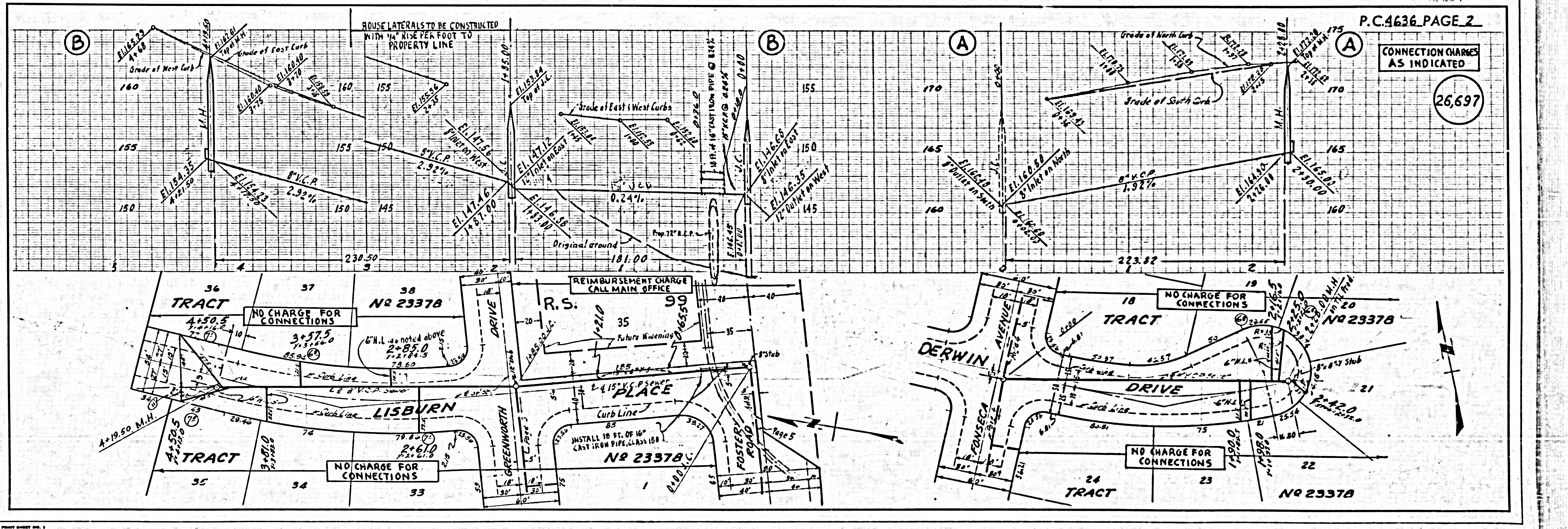
COUNTY OF LOS ANGELES, CALIFORNIA

APPROVED, JOHN A. LAMBE, COUNTY ENGINEER APPROVED, A. M. BAWN, CHIEF ENGINEER

BY *[Signature]* BY *[Signature]*
 COUNTY ENGINEER OFFICE ENGINEER

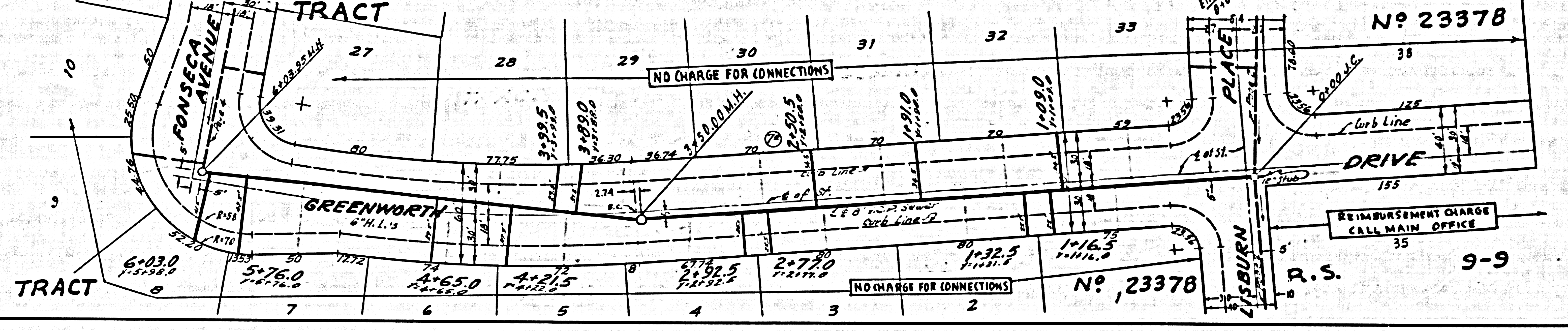
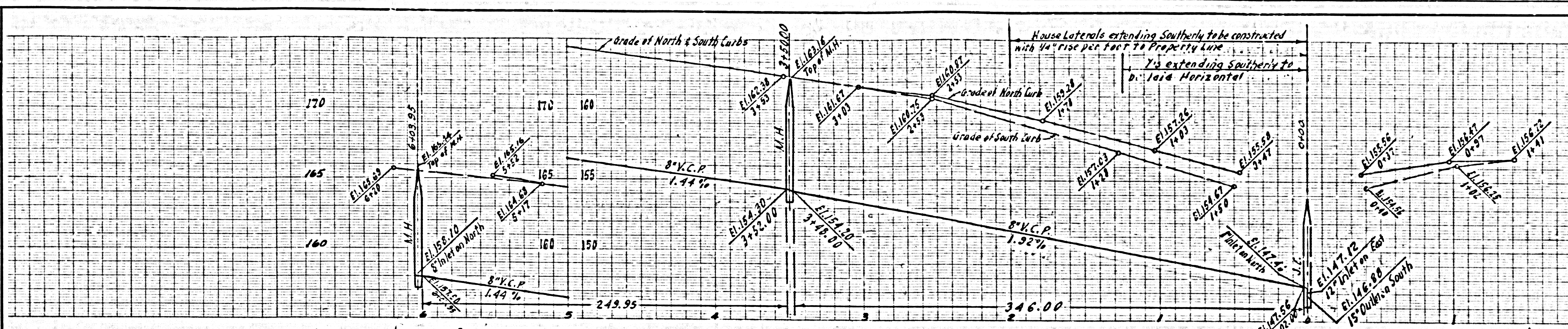
CHECKED BY *[Signature]* 3-15-57
 OFFICE OF COUNTY ENGINEER, R.C. & S. NO. 9404

SUBMITTED BY: *[Signature]* 7-10-58
 LOS ANGELES REGIONAL ENGINEER, R.C. & S. 3871



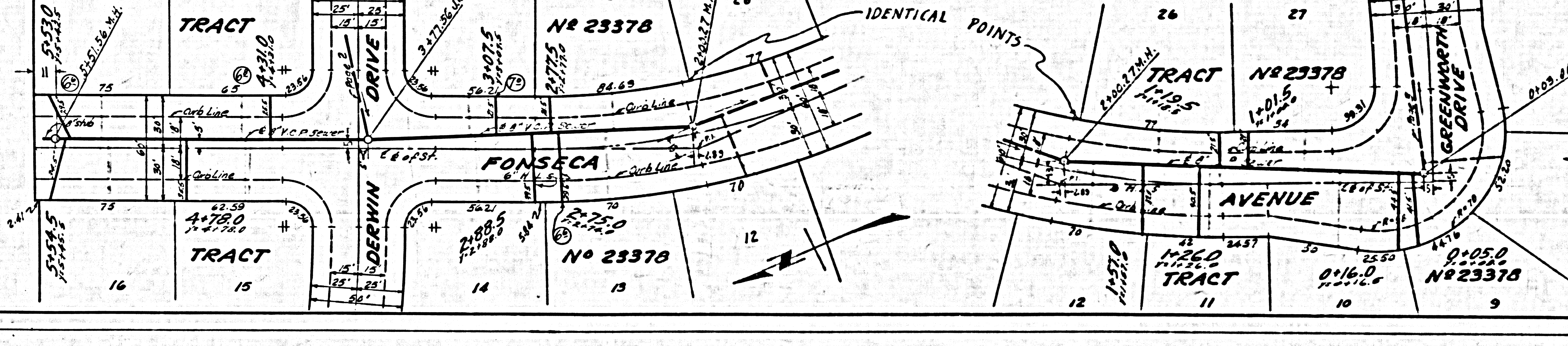
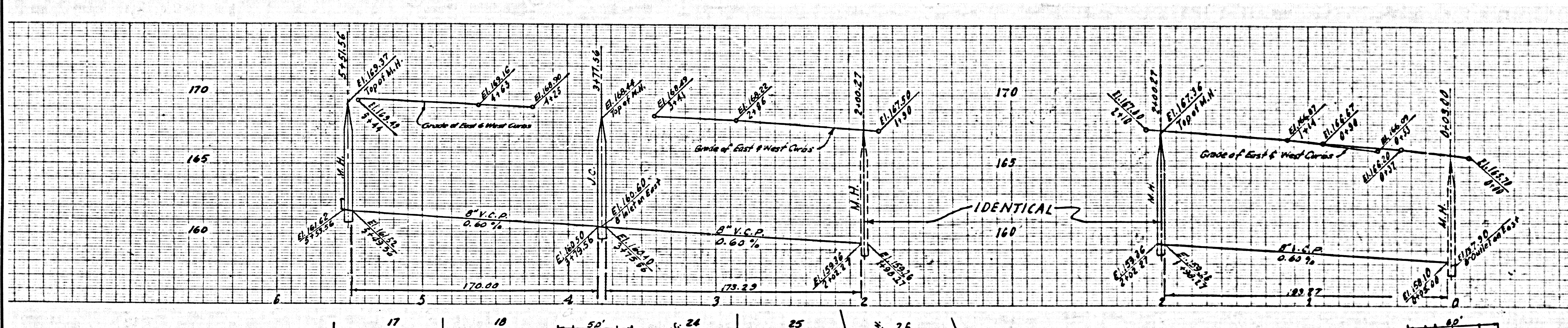
CONNECTION CHARGES AS INDICATED

26,698

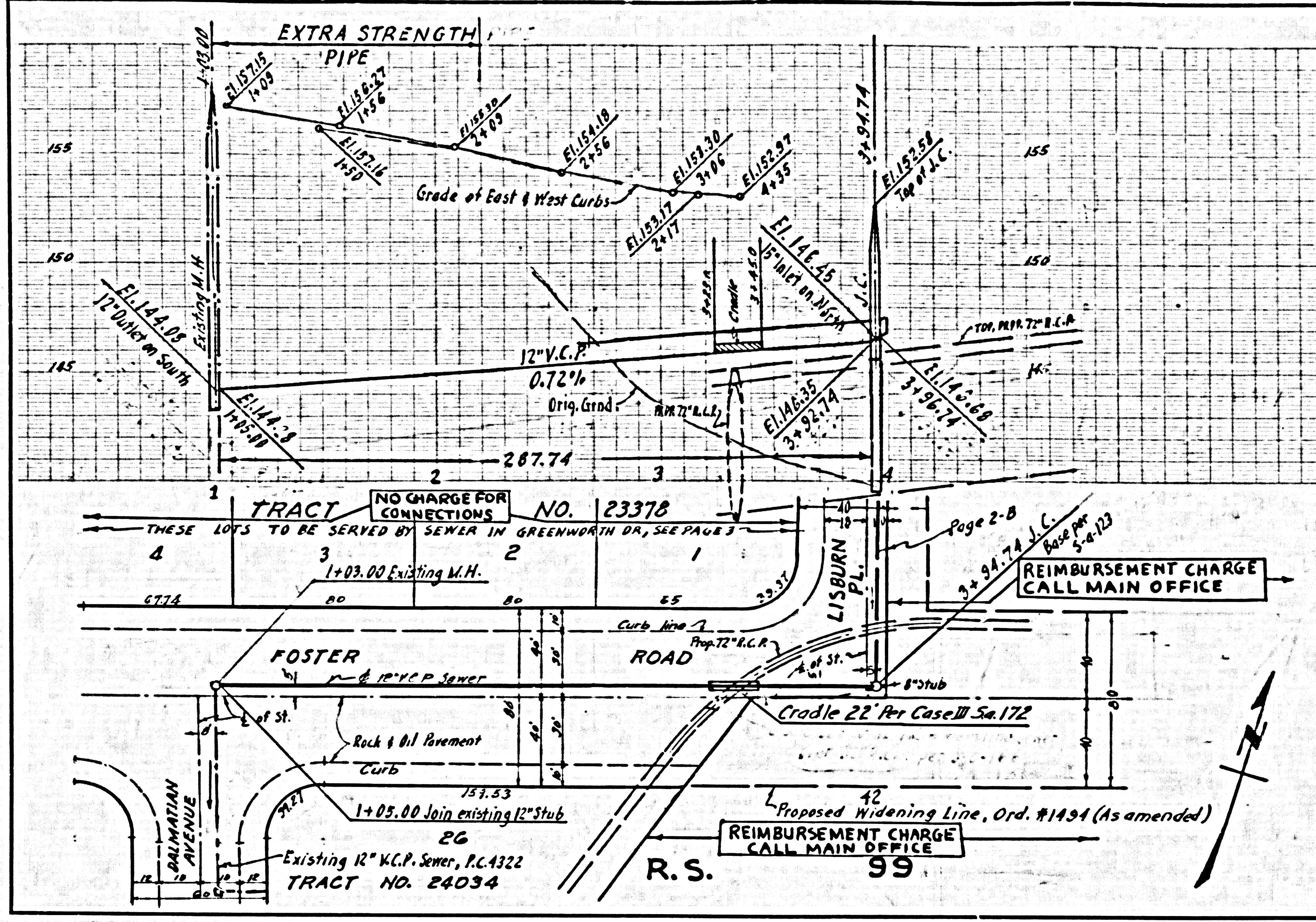


NO CHARGE FOR CONNECTIONS

26,699



CONNECTION CHARGES AS INDICATED 26,700



11-2-66 THE S.D. S&L. PLUM. PRINT. SHEET NO. 1