

# TEMPLE CITY BLDG. DIST. NO. 5

PROFILE ALIGNMENT AND GRADE OF P.C. 4637  
 SANITARY SEWERS PAGE 1  
 TO BE CONSTRUCTED IN  
 ROYAL OAKS DRIVE 27,713

PRIVATE CONTRACT NO. 4637

W.S. 46

2 SHEETS, 1 PAGES

SCALE: HORIZ. 1" = 40' VERT. 1" = 4'

JULY, 1950

PREPARED IN THE OFFICES OF

R.K. EARLE

REG. C. E. NO. 509

FOR LEGEND SEE PLAN NO. S-A-64

NOTES:  
 GRADES TO WHICH THIS IMPROVEMENT IS TO BE CONSTRUCTED ARE SHOWN ON PLANS AND PROFILE. GRADE POINTS FOR TOP OF CURBS, CENTER LINE OF STREETS, OR CENTER LINE OF ALLEYS ARE SHOWN BY CIRCLES ON PLANS AT ALL POINTS BETWEEN DESIGNATED POINTS. THE GRADE SHALL BE ESTABLISHED SO AS TO CONFORM TO A STRAIGHT LINE BETWEEN SAID DESIGNATED POINTS.  
 REVISIONS ARE IN RED ABOVE U.S.C. & G.S. 2884 L.P.M.'S. DATE OF REVISION IS SHOWN IN THE MARGINS.  
 THE DRAWING AND THE DATA HEREON ARE HEREBY MADE A PART OF THE SPECIFICATIONS.  
 BEFORE WORK CAN BE STARTED, THE CONTRACTOR MUST OBTAIN A PERMIT TO EXCAVATE IN COUNTY STREETS FROM THE L.A. COUNTY ROAD DEPT., DIST. 121, AND MAKE A DEPOSIT WITH THE COUNTY ENGINEER, ROOM 124 SAN ANTONIO BUILDING, 125 SO. BROADWAY, SUFFICIENT TO COVER THE COST OF CONSTRUCTION INSPECTION AND RECORD PLANS.  
 APPROVAL OF THIS PLAN BY THE COUNTY OF LOS ANGELES DOES NOT CONSTITUTE A REPRESENTATION AS TO THE ACCURACY OF THE LOCATION OF OR THE EXISTENCE OF ANY UNDERGROUND UTILITY PIPE, OR STRUCTURE WITHIN THE LIMITS OF THIS PROJECT. THE BUREAU OF PUBLIC WORKS HAS BEEN ADVISED OF THE LOCATION OF ANY SUCH UTILITY PIPE.  
 IF WORK IS TO BE DONE IN A STATE HIGHWAY, A PERMIT MUST BE OBTAINED FROM THE STATE OF CALIFORNIA, DIVISION OF HIGHWAYS, 126 SOUTH SPRING STREET.

COUNTY OF LOS ANGELES, CALIFORNIA

APPROVED JOHN A. LAMBE, COUNTY ENGINEER CITY ENGINEER, ATTY. GEN. STADLER

APPROVED C.E. CAMPBELL, CHIEF ENGINEER CO. SAN. ENG. NO. 22

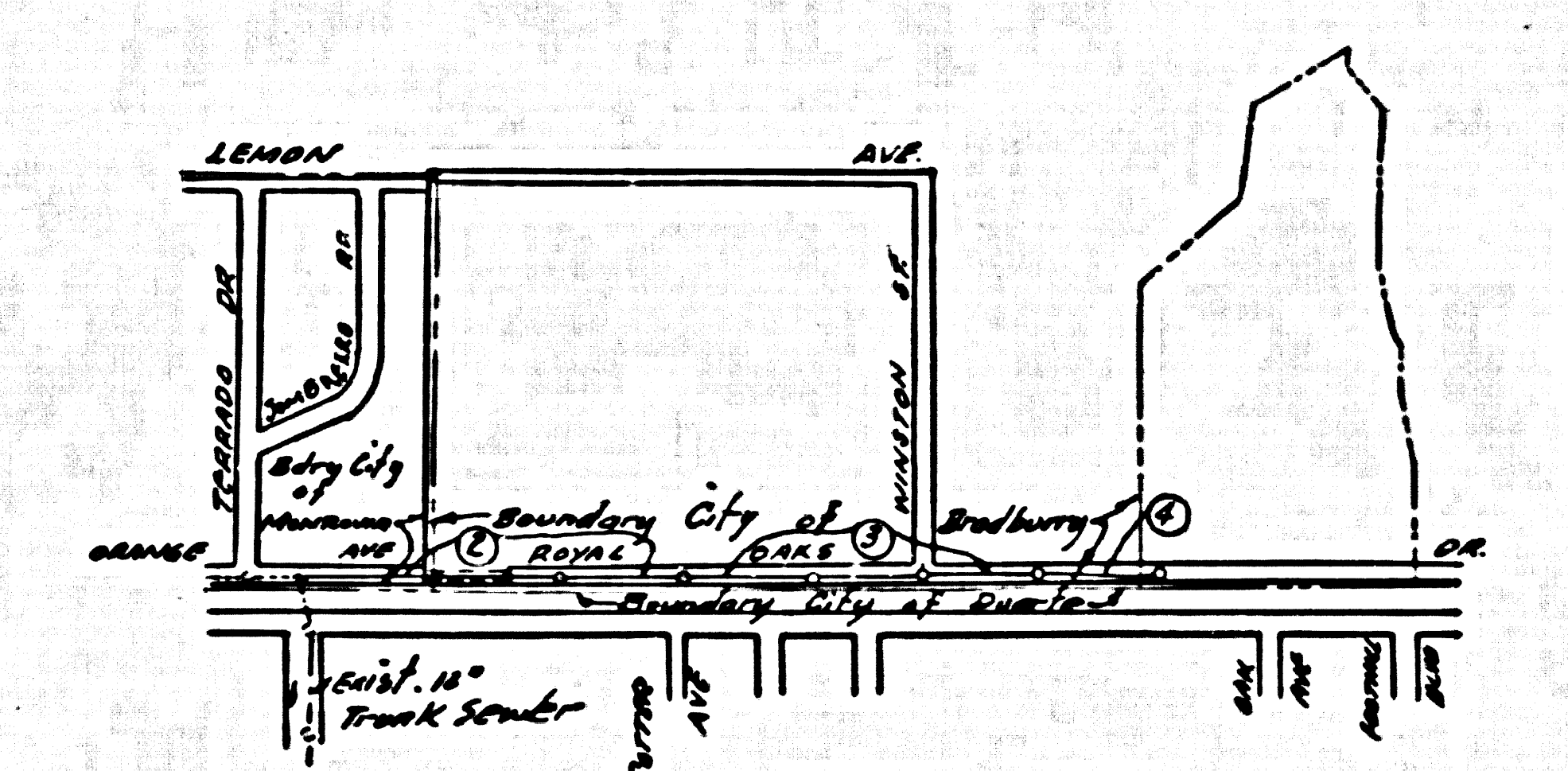
BY *[Signature]* SANITATION ENGINEER BY *[Signature]* OFFICE ENGINEER

CHECKED BY *[Signature]* OFFICE OF COUNTY ENGINEER, REG. C. E. NO. 3466

SUBMITTED *[Signature]* SAN GABRIEL VALLEY REGIONAL ENGINEER

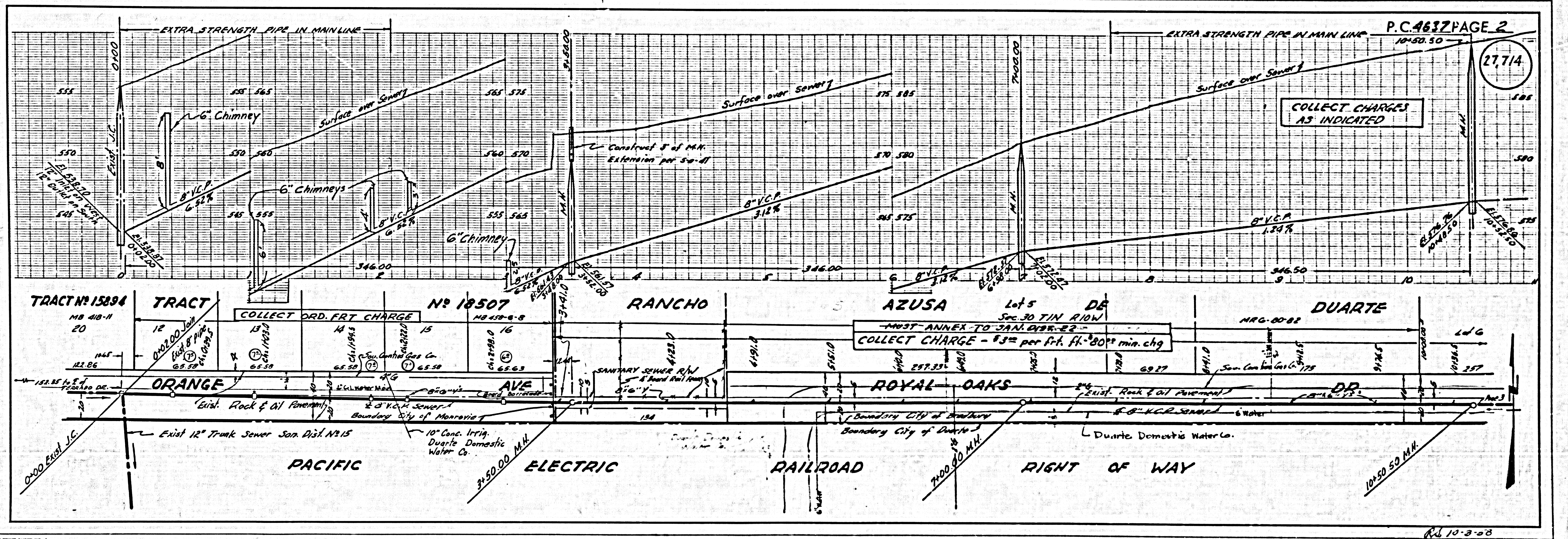
- NOTES:  
 PROVIDE STAKES ON THE PROPERTY LINE OR PROPERTY LINES PRODUCED AT RIGHT ANGLES TO THE SEWER LINE AT THE CENTER LINE OF EACH MANHOLE.  
 NO REPRESENTATIVE OF THE COUNTY ENGINEER WILL SURVEY OR LAYOUT ANY PORTION OF THE WORK.  
 THE OWNER OR HIS AUTHORIZED REPRESENTATIVE SHALL FURNISH THE COUNTY ENGINEER WITH GRADE SHEETS AND STATIONING FOR ALL HOUSE LATERALS AND Y BRANCHES AND SHALL PROVIDE STAKES FOR THEM AT THEIR PROPER LOCATIONS WITH STATIONING AND PLANNING MARKERS. ANY CHANGE IN LOCATION SHALL BE REQUESTED IN WRITING BY THE OWNER OR HIS REPRESENTATIVE.  
 NO REVISIONS SHALL BE MADE IN THESE PLANS WITHOUT THE APPROVAL OF THE COUNTY ENGINEER.  
 1. USE STANDARD MANHOLE FRAMES AND COVERS, S-A-117.  
 2. USE STANDARD STRENGTH PIPE EXCEPT AS NOTED.  
 3. USE CHAMFER MORTAR 6" WEDGE-LOCK, OR SPREAD-SEAL FOR ALL V.C.P. JOINTS PER S.A.C. 2028 AS NOTED.  
 4. PRESURFACE ALL TRENCH WITHIN PAVED AREA TO MEET L.A. COUNTY ROAD DEPT., OR CITY OF MONROVIA REQUIREMENTS IN ACCORDANCE WITH PERMITS.  
 5. ENCASE FOUR FEET OF SEWER AT POINTS OF INTERFERENCE WITH POLES, S-A-72, S.A.C. 2028.  
 6. HOUSE LATERALS TO BE CONSTRUCTED WITH INVERTS AT PROPERTY LINE 4" FEET BELOW 1" IN GRADE EXCEPT AS NOTED.  
 7. ALL STRUCTURES SHALL BE CONSTRUCTED WITH INVERTS AT PROPERTY LINE 4" FEET BELOW 1" IN GRADE EXCEPT AS NOTED.  
 8. FOR ALLOWABLE GRADES FEET USE FORMULA NO. 1095, S.A.C. 2028.  
 9. MANHOLE TOPS IN UNIMPROVED AREAS OR WAYS TO BE 8" ABOVE FINISHED GRADE.  
 10. THE PROFILE ENGINEER IS TO FURNISH THE ANGLE LATERAL DEPTH AT THE PROPERTY LINE BELOW THE ELEVATION OF CENTER LINE OF STREET.

B.M. L.A. Co. F.C.T.B.M. 8-30 El. 592.30  
 Curb top of road in top of c.b. 20' N. E  
 Royal Oaks Dr. 33' N.E. Winston St. N.E. Mid end of curb



COLLECT CHARGES AS INDICATED  
 L. C. 2-5-50

CITY OF MONROVIA  
 APPROVED: *[Signature]* 10-21-50  
 CITY ENGINEER



COLLECT CHARGES AS INDICATED

Rev 10-3-50

