

DOUBLE SCALE
NORWALK BLDG. DIST. NO. 4.2

PROFILE ALIGNMENT AND GRADE OF
SANITARY SEWERS PAGE 1
TO BE CONSTRUCTED IN

TRACT NO. 23886

PRIVATE CONTRACT NO. 4643

W.S. 34

2 SHEETS, 4 PAGES

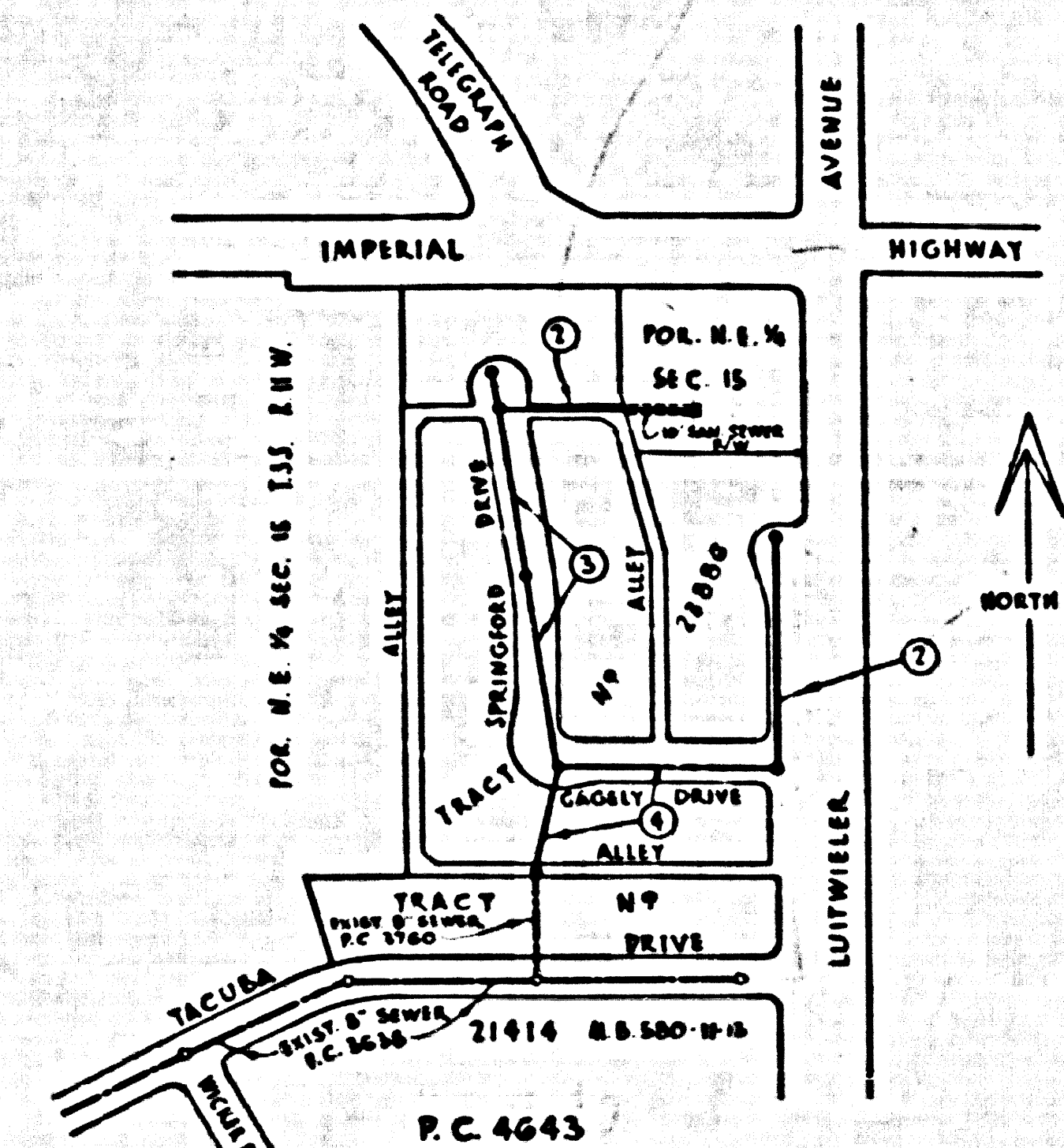
SCALE: VERT. 1" = 4' HORIZ. 1" = 40'

JANUARY, 1958

PREPARED IN THE OFFICES OF

Edward H. Conroy
REG. C. E. NO. 4824

FOR LEGEND SEE PLAN NO. S-A-64



P.C. 4643
INDEX MAP
SCALE: 1" = 300'

NOTE: (a) NO CONSTRUCTION WILL BE PERMITTED IN FILLED AREAS UNLESS ACCEPTABLE CERTIFICATION IS SUBMITTED TO THE CONSTRUCTION DIVISION OF THE COUNTY ENGINEER'S DEPARTMENT THAT COMPACTION IS GREATER THAN 80% (b) IF COMPACTION IS LESS THAN 90%, THE SEWER MUST BE CRADLED AS SHOWN ON THE PLANS. (c) IF COMPACTION IS GREATER THAN 90%, CRADLING IS NOT REQUIRED. HOWEVER, JOINT COMPOUND MUST BE SUBSTITUTED FOR CEMENT MORTAR FOR ALL JOINTS IN FILLED AREAS. WEDGE-LOCK OR SPEED-SEAL JOINTS MAY ALSO BE USED.

- NOTES
- PROVIDE STAKES ON THE PROPERTY LINE OR PROPERTY LINES PRODUCED AT RIGHT ANGLES TO THE SEWER LINE AT THE CENTER LINE OF EACH MANHOLE.
 - NO REPRESENTATIVE OF THE COUNTY ENGINEER WILL SURVEY OR LAYOUT ANY PORTION OF THE WORK.
 - THE OWNER OR HIS AUTHORIZED REPRESENTATIVE SHALL FURNISH THE COUNTY ENGINEER WITH GRADE SHEETS AND STATION FOR ALL HOUSE LATERALS AND Y BRANCHES AND SHALL PROVIDE STAKES FOR THEM AT THEIR PROPER LOCATIONS WITH STATIONING PLAINLY MARKED. ANY CHANGE IN LOCATION SHALL BE REQUESTED IN WRITING BY THE OWNER OR HIS REPRESENTATIVE.
 - NO REVISIONS SHALL BE MADE IN THESE PLANS WITHOUT THE APPROVAL OF THE COUNTY ENGINEER.
 - USE STANDARD MANHOLE FRAMES AND COVERS, S.A.-117, EXCEPT AS NOTED.
 - USE STANDARD STRENGTH PIPE EXCEPT AS NOTED.
 - USE CEMENT MORTAR, WEDGE LOCK, OR SPEED SEAL FOR ALL VITRIFIED CLAY PIPE JOINTS, EXCEPT AS IN NOTE 13 BELOW.
 - RESURFACE ALL TRENCH WITHIN PAVED AREA TO MEET L.A. COUNTY ROAD DEPT. OR CALIF. STATE HIGHWAY DEPT. REQUIREMENTS IN ACCORDANCE WITH PERMITS.
 - INDICATE FOUR FEET OF SETBACK AT POINTS OF INTERFERENCE WITH POLES, S.A.-119.
 - HOUSE LATERALS TO BE CONSTRUCTED WITH BRICKS AT PROPERTY LINE, 8" FEET BELOW CURB GRADE, IN BRICK.
 - ALL STRUCTURES SHALL BE BRICK SEWER STRUCTURES, S.A.-104, EXCEPT AS NOTED.
 - FOR ALLOWABLE LEAKAGE TEST USE FORMULA AND S.A.-104, EXCEPT AS NOTED, SEC. II.
 - MANHOLE POLES IN UNIMPROVED AREAS OR THAT TO BE 4' ABOVE FINISHED GRADE.
 - THIS PRIVATE CONTRACTOR SHALL MAINTAIN THE HOUSE LATERAL DEPTH AT THE PROPERTY LINE BELOW THE TOP OF CURB ELEVATION FOR EACH HOUSE LATERAL ON THE GRADE SHEET.

BENCH MARK: SY4042 - ELEVATION 171.836 - L.A. CO. ROAD DEPARTMENT MONUMENT IN MAC. PAVT. G'S EAST OF LUITWIELER AVE. 18' 2" WEST OF TEL. POLE @ W56517 1736' 2" SOUTH OF 4 IMPERIAL HIGHWAY IN CASING WITH COVER (1A MIRADA QUAD - 1955)

NO CHARGE FOR CONNECTIONS
E. Conroy 2-13-58

11. THE CONTRACTOR SHALL NOTIFY THE CONSTRUCTION AND STORM DRAIN DIVISION BY TELEPHONE - MADISON 9-4747, EXT. 362 AT LEAST 24 HOURS BEFORE STARTING ANY WORK UNDER THIS CONTRACT

NOTES

GRADES TO WHICH THE IMPROVEMENT IS TO BE CONSTRUCTED ARE SHOWN ON PLANS AND PROFILES. GRADE POINTS FOR POP OF CURBS, CENTER LINE OF STREETS, OR CENTER LINE OF ALLEYS ARE SHOWN BY CIRCLES ON PROFILES AT ALL POINTS BETWEEN NEAREST POINTS THE GRADE SHALL BE ESTABLISHED SO AS TO CONFORM TO A STRAIGHT LINE DRAWN BETWEEN SAID DESIGNATED POINTS.

REVISIONS ARE IN RED ABOVE S.C. & S.A. 224 LEVEL DATUM OF 1929.

THIS DRAWING AND THE DATA HEREON ARE HEREBY MADE A PART OF THE SPECIFICATIONS.

WORK SHALL BE CONSTRUCTED ACCORDING TO THE SPECIFICATIONS ON FILE IN THE OFFICE OF THE COUNTY ENGINEER AND SHALL BE PROSECUTED ONLY IN THE PRESENCE OF THE COUNTY ENGINEER.

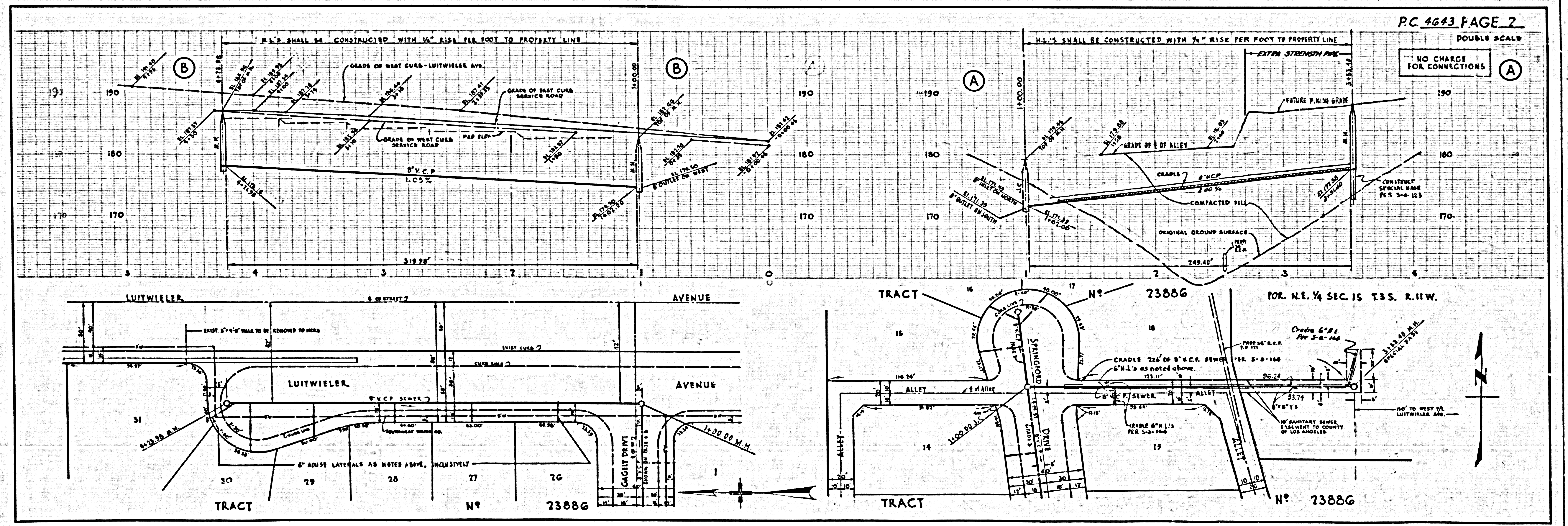
BEFORE WORK CAN BE STARTED, THE CONTRACTOR MUST OBTAIN A PERMIT TO EXCAVATE IN COUNTY STREETS FROM THE L.A. COUNTY ROAD DEPT., 100 W. 3RD ST. AND MAKE A REPORT WITH THE COUNTY ENGINEER, ROOM 504 PINE AVENUE, ROOM 2ND FLOOR, BROADWAY, TO COVER THE COST OF CONSTRUCTION INSPECTION AND RECORD PLANS.

APPROVAL OF THIS PLAN BY THE COUNTY OF LOS ANGELES DOES NOT CONSTITUTE A REPRESENTATION AS TO THE ACCURACY OF THE LOCATION OF OR THE EXISTENCE OR NON-EXISTENCE OF ANY UNDERGROUND UTILITY PIPE, OR STRUCTURE WITHIN THE LIMITS OF THIS PROJECT. THE NOTE APPLIES TO ALL PAGES.

IF WORK IS TO BE DONE IN A STATE HIGHWAY, A PERMIT MUST BE OBTAINED FROM THE STATE OF CALIFORNIA, DIVISION OF HIGHWAYS, 128 SOUTH SPRING STREET.

COUNTY OF LOS ANGELES, CALIFORNIA

APPROVED, JOHN A. LAMME, COUNTY ENGINEER
APPROVED, A. M. BAWL, CHIEF ENGINEER
BY *E. Conroy* ENGINEER
BY *J. B. Conroy* CHIEF ENGINEER
CHECKED BY *John B. Conroy* 2-13-58
OFFICE OF COUNTY ENGINEER, DEP. C. & E. NO. 3871



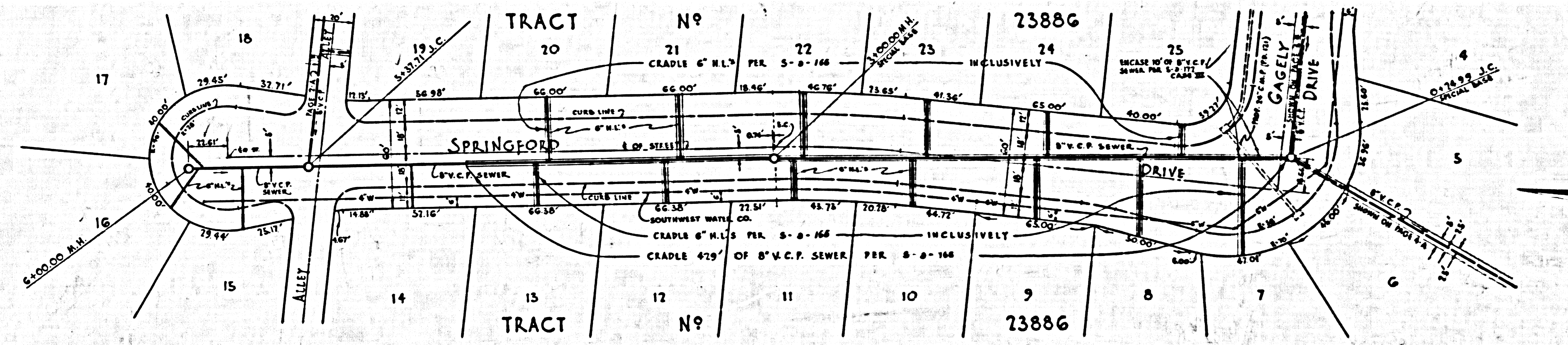
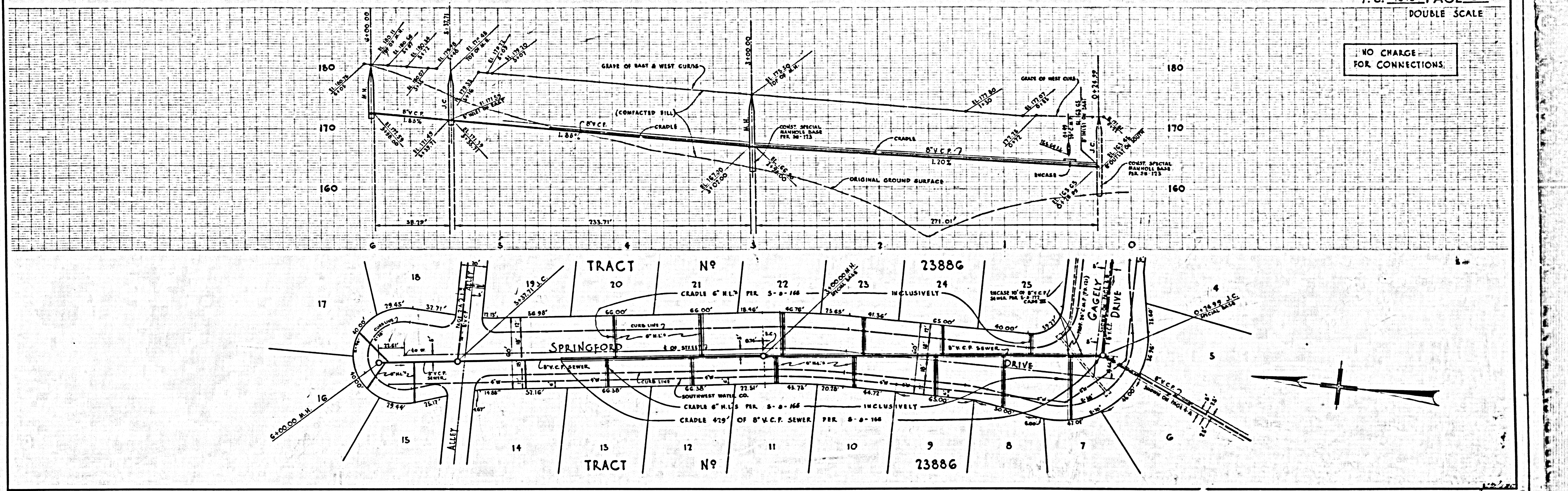
P.C. 4643 PAGE 2
DOUBLE SCALE

NO CHARGE FOR CONNECTIONS

TRACT NO. 23886
FOR N.E. 1/4 SEC. 15 T.B.S. R.11W.

TRACT NO. 23886

NO CHARGE FOR CONNECTIONS.



NO CHARGE FOR CONNECTIONS.

