

INDEX MAP  
FOR LOT 1, GOULD TRACT  
Scale 1" = 400'  
P.C.4644

D.M. 12586, ELEV. 1100.014  
F.B. 1268 (pg. 41)  
CASITAS AVE. & CROSBY ST., N.E. Cor.  
S.F. 5pk. in curb, S' N. of N end Curb

ALTADENA BLDG. DIST. NO. 3

- NOTES:
- PROVIDE STAKES ON THE PROPERTY LINE OR PROPERTY LINES PRODUCED AT EIGHT FEET INTERVALS TO THE SEWER LINE AT THE CENTER LINE OF EACH MANHOLE.
  - NO REPRESENTATIVE OF THE COUNTY ENGINEER WILL SURVEY OR LAYOUT ANY PORTION OF THE WORK.
  - THE OWNER OR HIS AUTHORIZED REPRESENTATIVE SHALL FURNISH THE COUNTY ENGINEER WITH GRADE SHEETS AND SECTION FOR ALL WORK. LATERALS AND "Y" BRANCHES AND SHALL PROVIDE STAKES FOR THESE AT THEIR PROPER LOCATIONS WITH STATIONING. NO PLANNED ANY CHANGE IN LOCATION SHALL BE BROUGHT IN WRITING BY THE OWNER OR HIS REPRESENTATIVE. NO REVISIONS SHALL BE MADE IN THESE PLANS WITHOUT THE APPROVAL OF THE COUNTY ENGINEER.
  - USE STANDARD MANHOLE FRAMES AND COVERS 3' x 4' UNLESS NOTED.
  - USE STANDARD STRENGTH PIPE UNLESS NOTED.
  - USE CHEAPEST MATERIAL FOR ALL VITRIFIED CLAY PIPE JOINTS.
  - RESURFACE ALL TRENCH WITHIN THREE DAYS TO MEET L.A. COUNTY ROAD DEPT. OR CALIF. STATE HIGHWAY DEPT. REQUIREMENTS IN ACCORDANCE WITH PERMITS.
  - SHAKE POLE PART OF SEWER AT POINTS OF INTERFERENCE WITH POLES 8'-4" TYP., CLASS III.
  - SHAKE SADDLES TO BE CONFORMED WITH HEIGHTS OF PROPERTY LINE. SEE PLAN FOR DETAILED INFORMATION.
  - ALL STRUCTURES SHALL BE BUILT WITH STRUCTURES 8'-4" DIA. EXCEPT AS NOTED.
  - FOR ALLOWABLE LEAKAGE TEST USE FORMULA NO. 1 SPACE, SEC. 66.
  - MANHOLE TOPS IN UNIMPROVED RIGHTS OF WAY TO BE LAYED WITH FINISHED GRADE.

NOTE:  
THE CONTRACTOR SHALL NOTIFY THE CONSTRUCTION AND STORM DRAIN DIVISION BY TELEPHONE, MADISON 9-4747, EXT. 362, AT LEAST 24 HOURS BEFORE STARTING ANY WORK UNDER THIS CONTRACT.

CONNECTION CHARGES  
AS INDICATED  
7775 Leimner 1-29-58

PROFILE ALIGNMENT AND GRADE OF P.C.4644  
SANITARY SEWERS PAGE 1

TO BE CONSTRUCTED IN  
POR. LOT 1 OF THE GOULD TRACT, M.B. 11-89  
SANITARY SEWER RIGHT OF WAY

PRIVATE CONTRACT NO. 4644

W.S. 50  
1 SHEET, 2 PAGES

SCALE: VERT. 1" = 4'  
HORIZ. 1" = 40'

NOV. 1957

PREPARED IN THE OFFICES OF  
BARNETT HOPEN & SMITH

By: *Harold K. Smith*  
REG. C. E. NO. 1216

FOR LEGEND SEE PLAN NO. S.A. 64

25758

NOTE:  
GRADE TO WHICH THIS IMPROVEMENT IS TO BE CONSTRUCTED ARE SHOWN ON PLANS AND PROFILES. GRADE POINTS FOR TOP OF CURB, CENTER LINE OF STREET, OR CENTER LINE OF ALLEYS ARE SHOWN BY CIRCLES ON PROFILES AT ALL POINTS BETWEEN ESTABLISHED POINTS. THE GRADE SHALL BE ESTABLISHED SO AS TO CONFORM TO A STRAIGHT LINE DRAWN BETWEEN SAID ESTABLISHED POINTS.  
ELEVATIONS ARE IN FEET ABOVE U.S.C. & G.S. UNLESS OTHERWISE NOTED.  
THIS DRAWING AND THE DATA HEREON ARE HEREBY MADE A PART OF THE SPECIFICATIONS.  
WORK SHALL BE CONSTRUCTED ACCORDING TO SPECIFICATIONS ON FILE IN THE OFFICE OF THE COUNTY ENGINEER AND SHALL BE INSPECTED ONLY IN THE PRESENCE OF THE COUNTY ENGINEER.  
RECORD WORK CAN BE STARTED THE CONTRACTOR MUST OBTAIN A PERMIT TO OCCUPY IN COUNTY STREETS FROM THE L.A. COUNTY ROAD DEPT. FOR THE TIME OF AND MAKE A DEPOSIT WITH THE COUNTY ENGINEER, ROOM 304 CITY HALL, \$100.00 AS A GUARANTEE TO COVER THE COST OF CONSTRUCTION INSPECTION AND RECORD PLANS.  
APPROVAL OF THIS PLAN BY THE COUNTY OF LOS ANGELES DOES NOT CONSTITUTE A REPRESENTATION AS TO THE ACCURACY OF THE LOCATION OF OR THE EXISTENCE OR NON-EXISTENCE OF ANY UNRECORDED EIGHTY-FIVE, OR STRUCTURE WITHIN THE LIMITS OF THIS PROJECT THIS NOTE APPLIES TO ALL SHEETS.  
IF WORK IS TO BE DONE IN A STATE HIGHWAY, A PERMIT MUST BE OBTAINED FROM THE STATE OF CALIFORNIA, DIVISION OF HIGHWAYS, 150 SOUTH SPRING STREET.

COUNTY OF LOS ANGELES, CALIFORNIA

APPROVED, JOHN A. LAMBE, COUNTY ENGINEER

APPROVED, A. M. EARN, CHIEF ENGINEER

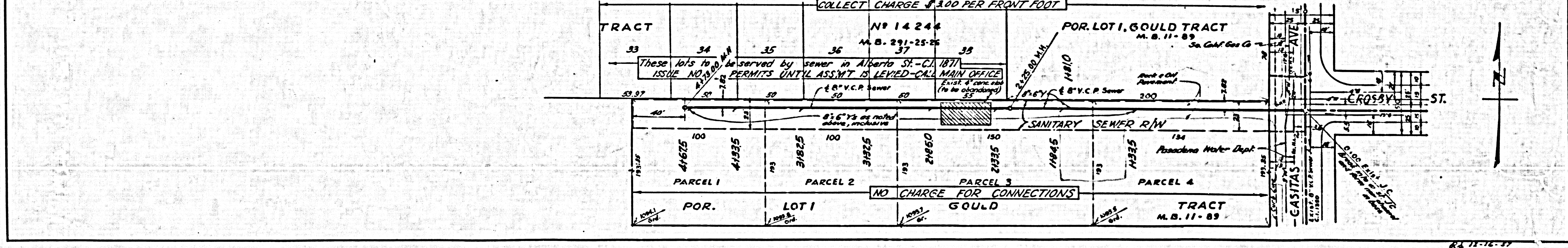
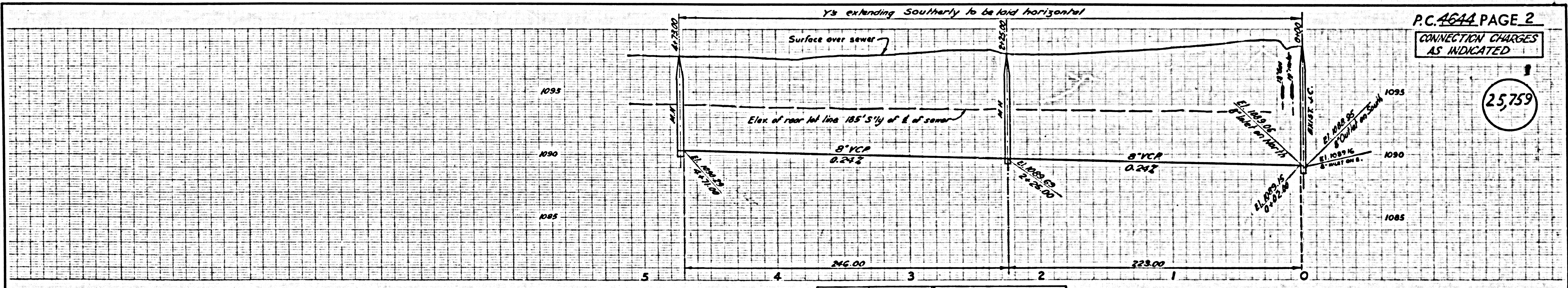
BY: *John A. Lamb* COUNTY ENGINEER

BY: *A. M. Earn* CHIEF ENGINEER

CHECKED BY: *W. O. O'Neil*  
OFFICE OF COUNTY ENGINEER, REG. C. E. NO. 3408

P.C. 4644 PAGE 2  
CONNECTION CHARGES  
AS INDICATED

25759



BC7874