

BELFLOWER BLDG. DIST. NO. 4

PROFILE ALIGNMENT AND GRADE OF P.C. 4650
 SANITARY SEWERS PAGE 1
 TO BE CONSTRUCTED IN

PIONEER BOULEVARD

PRIVATE CONTRACT NO. 4650

W.S. 31

1 SHEET, 2 PAGES

26,123

SCALE: VERT. 1" = 4' HORIZ. 1" = 40'

NOVEMBER, 1957

PREPARED IN THE OFFICES OF
 MCDANIEL ENGINEERING CO.
 ANAHEIM, CALIF.

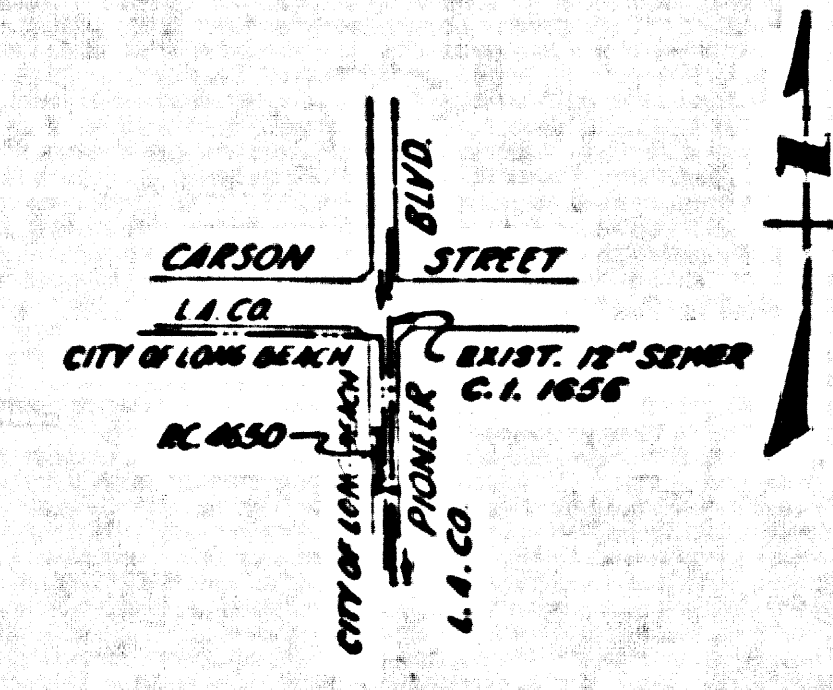
BY R. R. [Signature] 11-26-57
 REG. C. E. NO. 3408

FOR LEGEND SEE PLAN NO. S-A-64

- NOTES:
- PROVIDE STAKES ON THE PROPERTY LINE OR PROPERTY LINES PRODUCED AT RIGHT ANGLES TO THE STAKE LINE AT THE CENTER LINE OF EACH MANHOLE.
 - NO REPRESENTATIVE OF THE CITY ENGINEER WILL SURVEY OR LAYOUT ANY PORTION OF THE WORK.
 - THE OWNER OR HIS AUTHORIZED REPRESENTATIVE SHALL FURNISH THE CITY ENGINEER WITH GRADE SHEETS AND STATION FOR ALL HOUSE LATERALS AND T BRANCHES AND SHALL PROVIDE STAKES FOR THEM AT THEIR PROPER LOCATIONS WITH STATION AND PLAINLY MARKED. ANY CHANGE IN LOCATION SHALL BE REQUESTED IN WRITING BY THE OWNER OR HIS REPRESENTATIVE.
 - NO REVISIONS SHALL BE MADE IN THESE PLANS WITHOUT THE APPROVAL OF THE CITY ENGINEER.
 - USE STANDARD MANHOLE FRAMES AND COVERS. EXCEPT AS NOTED.
 - USE STANDARD STRENGTH PIPE EXCEPT AS NOTED.
 - USE 6" P.I. NO. 2 FOR ALL VITRIFIED CLAY PIPE JOINTS.
 - RESURFACE ALL FINISH WITHIN PAVED AREA TO MEET L.A. COUNTY ROAD DEPT. AND CITY OF LONG BEACH REQUIREMENTS IN ACCORDANCE WITH PERMITS.
 - INCLUDE FOUR FEET OF SEWER AT POINTS OF INTERFERENCE WITH POLES, 8'-4" DIA.
 - HOUSE LATERALS TO BE CONSTRUCTED WITH INVERTS AT PROPERTY LINE 6" FEET BELOW CURB GRADE EXCEPT AS NOTED.
 - ALL STRUCTURES SHALL BE SEWER STRUCTURES. EXCEPT AS NOTED.
 - FOR ALLOWABLE LEAKAGE TEST USE FORMULA NO. 2 SPEC. 3, SEC. 26.
 - MANHOLE JOBS IN UNIMPROVED RIGHTS-OF-WAY TO BE 6" ABOVE FINISHED GRADE.
 - PRIOR TO ACCEPTANCE OF THE SEWERS, THE CITY OF LONG BEACH WILL TEST THE LINES FOR CLEANLINESS BY THE USE OF A SEWER CLEANING BALL. CONTRACTOR SHALL NOTIFY THE CITY ENGINEER WHEN HIS LINES ARE READY FOR SUCH TEST.

NOTE: THE CONTRACTOR MUST OBTAIN A PERMIT TO COVER INSPECTION OF THE CONNECTION ONLY INTO THE EXISTING SEWER FROM THE COUNTY ENGINEER'S OFFICE, ROOM 304, 253 30 BROADWAY, LOS ANGELES, AND NOTIFY THE CONSTRUCTION AND STORM DRAIN DIVISION BY TELEPHONE, MA 3-8747, EXT. 302, AT LEAST 24 HOURS BEFORE STARTING ANY WORK UNDER THIS CONTRACT.

BENCH MARK E.L. 33.65
 Top Curb at W. by B.C.E. IN Cor. Carson & Pioneer
 Cal. Div. Hwy. datum



INDEX MAP
 SCALE 1" = 400'

NOTE: GRADES TO WHICH THIS IMPROVEMENT IS TO BE CONSTRUCTED ARE SHOWN ON PLANS AND PROFILES. GRADE POINTS FOR TOP OF CURB, CENTER LINE OF STREETS, OR CENTER LINE OF ALLEYS ARE SHOWN BY CIRCLES ON PROFILES AT ALL POINTS BETWEEN DESIGNATED POINTS. THE GRADE SHALL BE ESTABLISHED SO AS TO CONFORM TO A STRAIGHT LINE DRAWN BETWEEN SAID DESIGNATED POINTS.

THE DRAWING AND THE DATA HEREON ARE HEREBY MADE A PART OF THE SPECIFICATIONS. WORK SHALL BE CONSTRUCTED ACCORDING TO SPECIFICATIONS & IS FILED IN THE OFFICE OF THE CITY ENGINEER AND SHALL BE PRODUCED ONLY IN THE PRESENCE OF THE CITY ENGINEER'S REPRESENTATIVE, EXCEPT AS NOTED AT LEFT.

BEFORE WORK CAN BE STARTED, THE CONTRACTOR SHALL OBTAIN A PERMIT TO EXCAVATE IN CITY STREETS FROM THE LONG BEACH DEPT. OF ENGINEERING AND IN COUNTY STREETS FROM THE L.A. COUNTY ROAD DEPT., 100 N. 4TH ST., LOS ANGELES.

APPROVAL OF THIS PLAN BY THE COUNTY OF LOS ANGELES DOES NOT CONSTITUTE A REPRESENTATION AS TO THE ACCURACY OF THE LOCATION OF OR THE EXISTENCE OF ANY UNDERGROUND UTILITY PIPE, OR STRUCTURE WITHIN THE LIMITS OF THIS PROJECT. THIS NOTE APPLIES TO ALL PAGES.

IF WORK IS TO BE DONE IN A STATE HIGHWAY, A PERMIT MUST BE OBTAINED FROM THE STATE OF CALIFORNIA, DIVISION OF HIGHWAYS, 126 SOUTH SPRING STREET.

COUNTY OF LOS ANGELES, CALIFORNIA

APPROVED JOHN A. LAMBE, COUNTY ENGINEER FOR CONNECTION TO C.T. 1656

APPROVED A. M. SAWIN, CHIEF ENGINEER FOR CONNECTION TO C.T. 1656

BY [Signature] CHIEF ENGINEER

BY [Signature] CHIEF ENGINEER

CITY OF LONG BEACH

APPROVED JESS D. GILKERSON, CITY ENGINEER

BY [Signature] DEPUTY CITY ENGINEER

Job No. 57-150

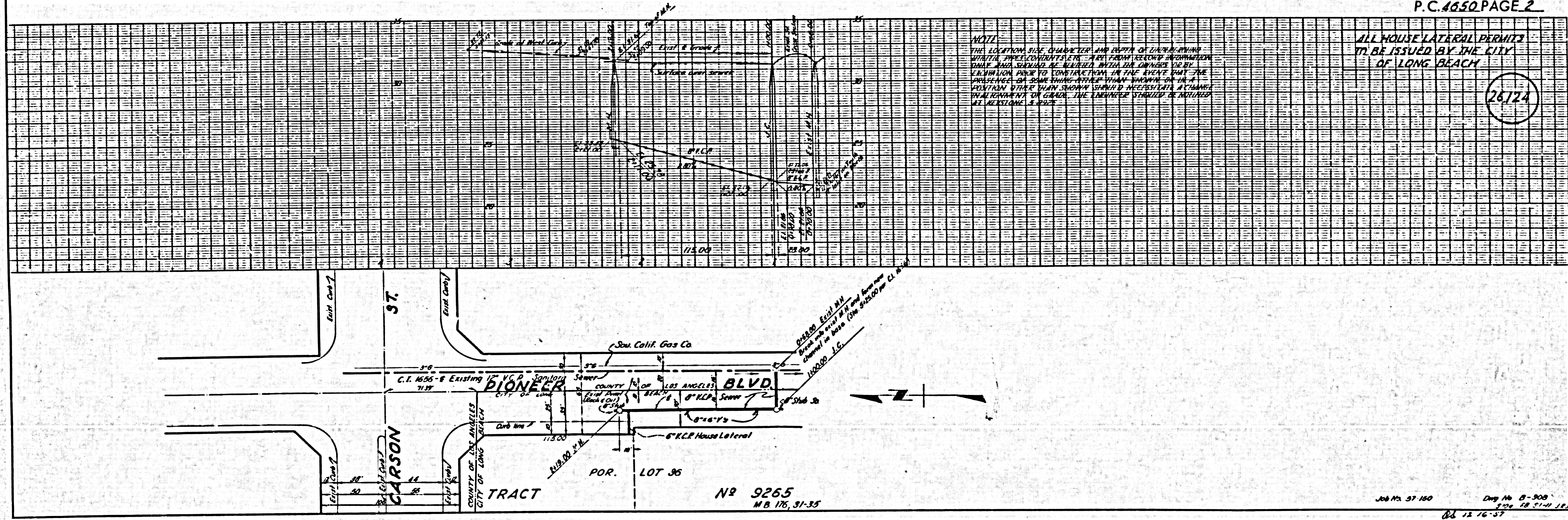
Dist. No. B-508

P.C. 4650 PAGE 2

ALL HOUSE LATERAL PERMITS TO BE ISSUED BY THE CITY OF LONG BEACH

26,124

NOTE: THE LOCATION, SIZE, CHARACTER AND DEPTH OF UNDERGROUND UTILITIES, PIPE, CONDUITS, ETC., ARE FROM RECORD INFORMATION ONLY AND SHOULD BE RECHECKED BY THE CONTRACTOR BY EXCAVATION PRIOR TO CONSTRUCTION OF THE SEWER. THE CONTRACTOR SHALL BE RESPONSIBLE FOR ANY DAMAGE TO ANY UTILITIES OTHER THAN SHOWN WHICH MAY BE NECESSARY TO ACCOMMODATE THE SEWER. THE CONTRACTOR SHALL BE RESPONSIBLE FOR ANY DAMAGE TO ANY UTILITIES OTHER THAN SHOWN WHICH MAY BE NECESSARY TO ACCOMMODATE THE SEWER.



NO 9265
 M.B. 176, 31-35

Job No. 57-150

Dist. No. B-508

12 16-57