

Note:
 No Outlet
 for this Job
 See Letter for Pumping
 9-24
 7-8-58

COLLECT CHARGES
 AS INDICATED
 L. Curtis - 12-23-57

BELFLOWER BLDG. DIST. NO. 407

- NOTES:
- PROVIDE STAKES ON THE PROPERTY LINE OR PROPERTY LINES PRODUCED AT RIGHT ANGLES TO THE SEWER LINE AT THE CENTER LINE OF EACH MANHOLE.
 - NO REPRESENTATIVE OF THE CITY ENGINEER WILL SURVEY OR LAYOUT ANY PORTION OF THE WORK.
 - THE OWNER OR HIS AUTHORIZED REPRESENTATIVE SHALL FURNISH THE CITY ENGINEER WITH GRADE SHEETS AND STATION FOR ALL HOUSE LATERALS AND Y BRANCHES AND SHALL PROVIDE STAKES FOR THEM AT THESE PROPER LOCATIONS WITH STATIONING PLAINLY MARKED. ANY CHANGE IN LOCATION SHALL BE INDICATED BY WRITING BY THE OWNER OR HIS REPRESENTATIVE.
 - NO REVISIONS SHALL BE MADE IN THESE PLANS WITHOUT THE APPROVAL OF THE CITY ENGINEER.
 - USE STANDARD MANHOLE FRAMES AND COVERS, S.A-117.
 - USE STANDARD STRENGTH PIPE EXCEPT AS NOTED.
 - USE JOINT COMPENSATION FOR ALL VITRIFIED CLAY PIPE JOINTS, PER SPEC'S, SEC. 22.
 - RESURFACE ALL TRENCHES WITHIN PAVED AREA TO MEET CITY ROAD DEPT. OR CALIF. STATE HIGHWAY DEPT. REQUIREMENTS IN ACCORDANCE WITH PERMITS.
 - ENCASE FOUR FEET OF SEWER AT POINTS OF INTERFERENCE WITH POLES, S.A-119.
 - HOUSE LATERALS TO BE CONSTRUCTED WITH INVERTS AT PROPERTY LINE, 6" BELOW CURB GRADE.
 - ALL STRUCTURES SHALL BE BRICK SEWER STRUCTURES, S.A-104, EXCEPT AS NOTED.
 - FOR ALLOWABLE LEAKAGE TEST USE FORMULA NO. 2, SPEC'S, SEC. 24.
 - MANHOLE TOPS IN UNIMPROVED AREAS TO BE 6" ABOVE FINISHED GRADE.
 - ALL THE LOCATIONS SHOWN FOR EXISTING SUBSTRUCTURES HAVE BEEN TAKEN FROM RECORDS AND THEIR CORRECTNESS AND COMPLETENESS IS IN NO WAY GUARANTEED. IT SHALL BE THE CONTRACTOR'S RESPONSIBILITY ALONE TO DEFINITELY LOCATE ALL UNDERGROUND LINES OF EVERY NATURE WHETHER SHOWN HEREON OR NOT, AND PROTECT THEM FROM DAMAGE. THE CONTRACTOR SHALL BEAR THE TOTAL EXPENSE OF REPAIR TO ANY LINE DAMAGED BY ANY OPERATION IN CONNECTION WITH THE PROSECUTION OF THIS WORK.
 - THE PRIVATE ENGINEER IS TO FURNISH THE HOUSE LATERAL DEPTH AT THE PROPERTY LINE BELOW THE TOP OF CURB ELEVATION FOR EACH HOUSE LATERAL ON THE GRADE SHEET.

- NOTES:
- THE CONTRACTOR SHALL NOTIFY THE CONSTRUCTION AND STORM DRAIN DIVISION BY TELEPHONE, MADISON 9-4747, EXT. 302, AT LEAST 24 HOURS BEFORE STARTING ANY WORK UNDER THIS CONTRACT.
 - If ground water is encountered and the trench cannot be dried to the satisfaction of the City Engineer, Wedge-Lock or Speed-Zel precision gasket joints for 12" with natural or synthetic rubber gasket shall be used per spec's sec. 26.4.18.

Beach Marks L. & T. W. and Concrete
 Headwall 30' N. & 45' W. of centerline
 Intersection Artesia Blvd. & Palo
 Verde Ave. S. Y. 1942
 Co. Sur. Precise El. 66.078 1955 Adj.

PROFILE ALIGNMENT AND GRADE OF **P.C. 4652**
SANITARY SEWERS PAGE 1
 TO BE CONSTRUCTED IN

TRACT NO. 24336-24337-24338
PRIVATE CONTRACT NO. 4652

W.S. 33
 4 SHEETS, 7 PAGES
 SCALE: VERT. 1" = 4' HORIZ. 1" = 40'
 DEC., 1957

PREPARED IN THE OFFICES OF
BARCLAY ENGINEERING CO., INC.

By *Edward J. Pearson*
 REG. C. E. NO. 8783

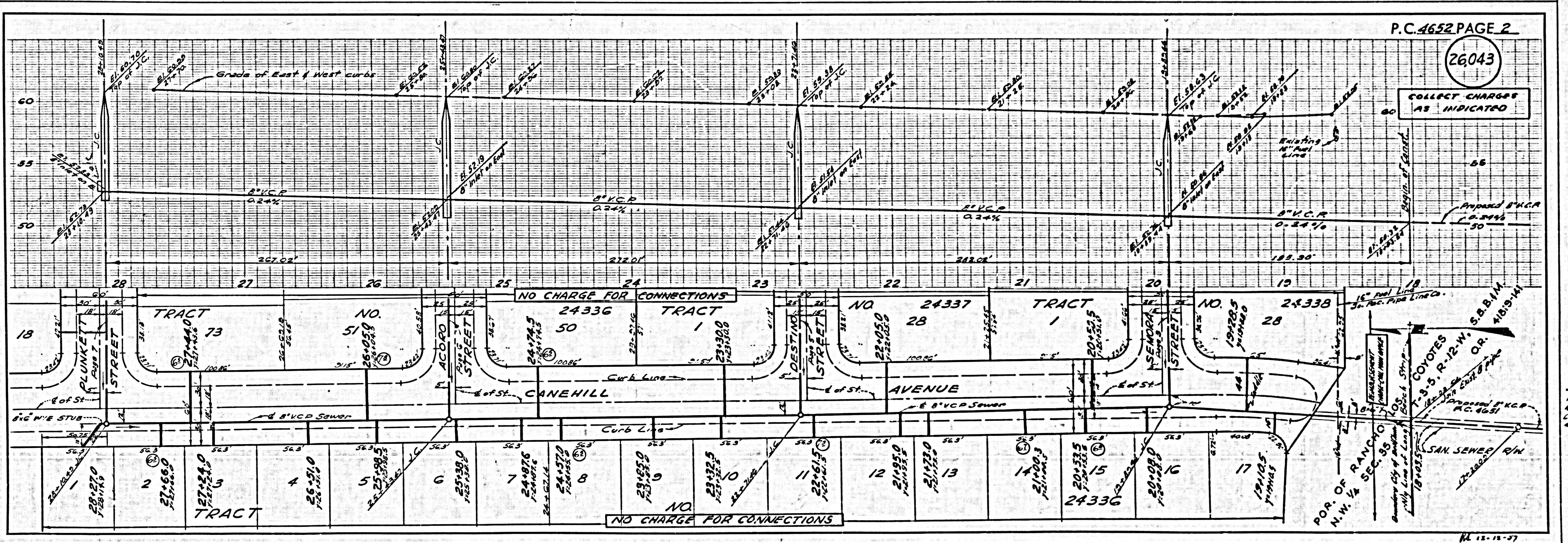
FOR LEGEND SEE PLAN NO. S-A-64

26,042

NOTES:
 GRADES TO WHICH THIS IMPROVEMENT IS TO BE CONSTRUCTED ARE SHOWN ON PLANS AND PROFILE. GRADE POINTS, FOR TOP OF CURB, CENTER LINE OF STREETS, OR CENTER LINE OF ALLEYS ARE SHOWN BY CIRCLES ON PLANS. AT ALL POINTS BETWEEN DESIGNATED POINTS THE GRADE SHALL BE ESTABLISHED SO AS TO CONFORM TO A STRAIGHT LINE DRAWN BETWEEN SAID DESIGNATED POINTS.
 ELEVATIONS ARE AS PER ABOVE U.S.C. & G.S. 842 LEVEL DATUM OF 1929.
 THESE PLANS AND THE DATA HEREON ARE HEREBY MADE A PART OF THE SPECIFICATIONS.
 WORK SHALL BE CONSTRUCTED ACCORDING TO SPECIFICATIONS ON FILE IN THE OFFICE OF THE CITY ENGINEER AND SHALL BE PROSECUTED ONLY IN THE PRESENCE OF THE CITY ENGINEER.
 BEFORE WORK CAN BE STARTED, THE CONTRACTOR MUST OBTAIN A PERMIT TO EXCAVATE IN CITY STREETS FROM THE L.A. COUNTY ROAD DEPT. FOR 1/2" AND MAKE A REPORT WITH THE CITY ENGINEER, ROOM 124 FROM AMERICAN BLDG. 313 SO. BROADWAY IMPROVING TO COVER THE COST OF CONSTRUCTION INSPECTION AND RECORD PLANS.
 APPROVAL OF THIS PLAN BY THE CITY OF BELFLOWER DOES NOT CONSTITUTE A REPRESENTATION AS TO THE ACCURACY OF THE LOCATION OF OR THE EXISTENCE OR NON-EXISTENCE OF ANY UNDERGROUND UTILITY PIPES OR STRUCTURES WITHIN THE LIMITS OF THIS PROJECT. THIS NOTE APPLIES TO ALL PAGES.
 IF WORK IS TO BE DONE IN A STATE HIGHWAY, A PERMIT MUST BE OBTAINED FROM THE STATE OF CALIFORNIA, DIVISION OF HIGHWAYS, 128 SOUTH 9TH STREET.

CITY OF BELFLOWER, CALIFORNIA

APPROVED, JOHN A. LAMME, CITY ENGINEER
 APPROVED, A. M. RAWN, CHIEF ENGINEER
 BY *Ed Hughes* SAMUELSON ENGINEER
 BY *Ed Pearson* OFFICE ENGINEER
 CHECKED BY *Ed Pearson* WATER
 OFFICE OF COUNTY ENGINEER, REG. C. E. NO. 14637



26,043

COLLECT CHARGES
 AS INDICATED

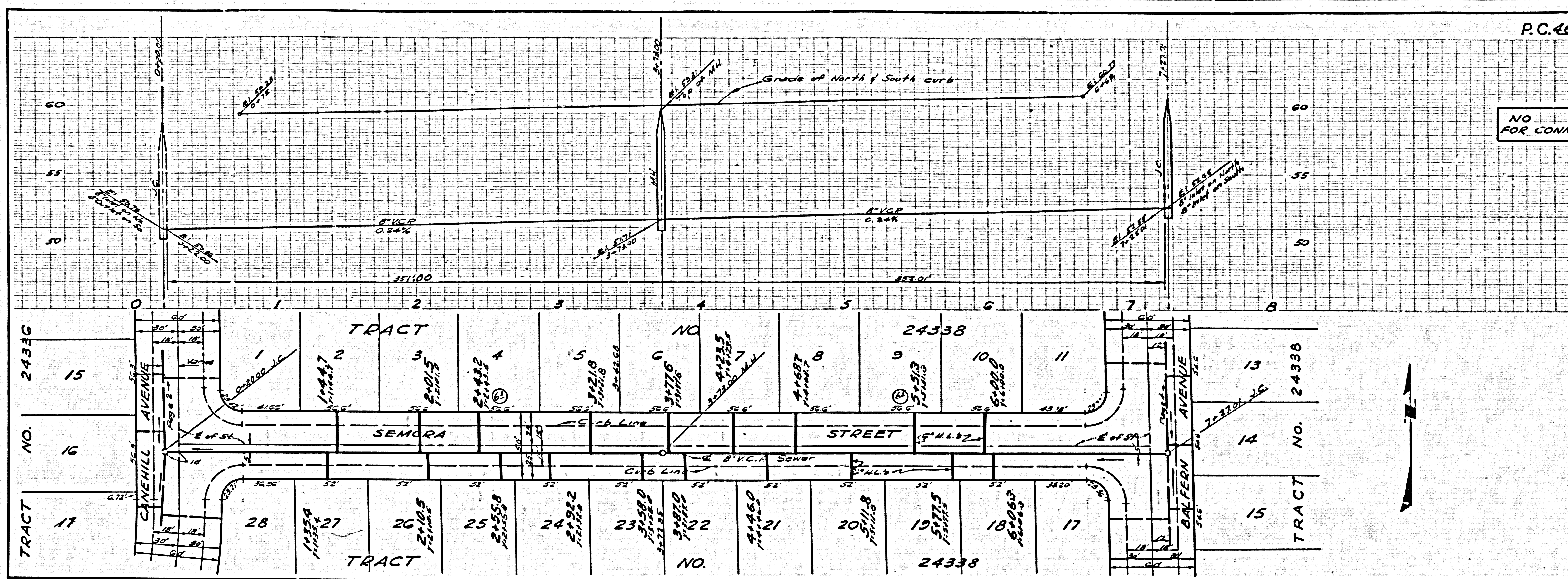
NO CHARGE FOR CONNECTIONS

SAN SEWER R/W

12-12-57

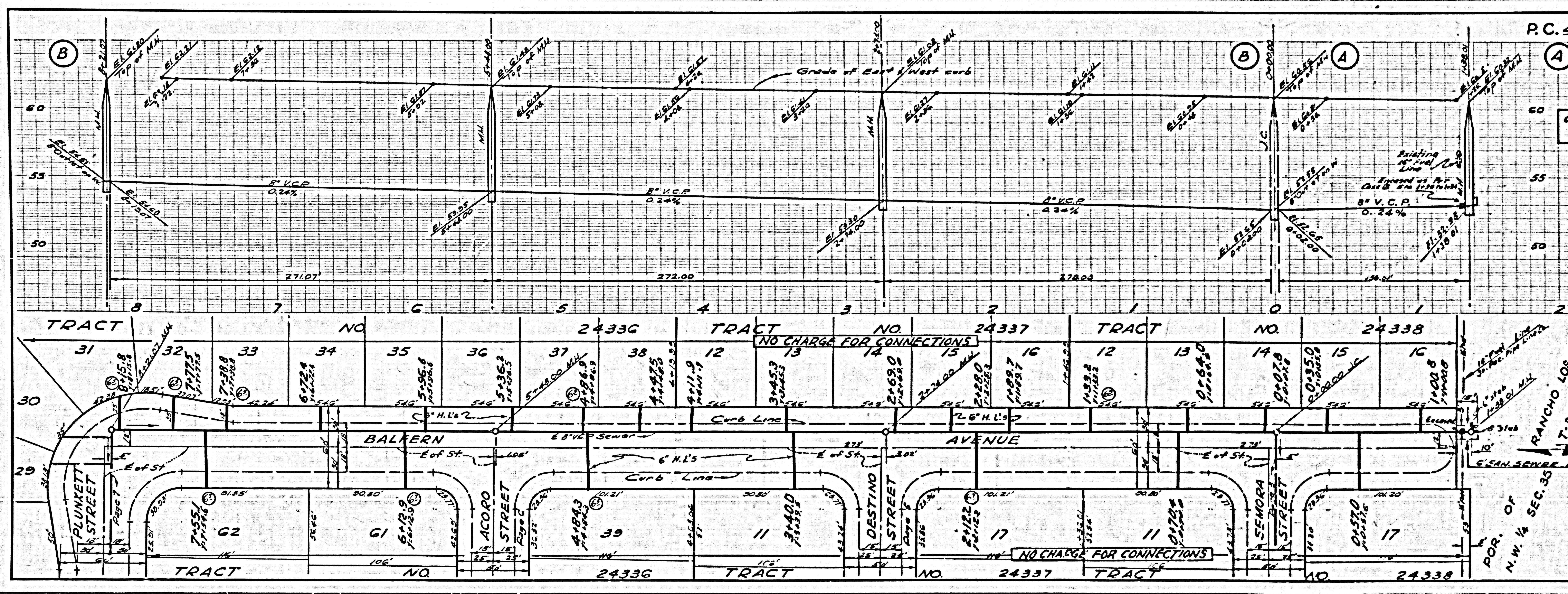
26044

NO CHARGE FOR CONNECTIONS



26045

COLLECT CHARGES AS INDICATED

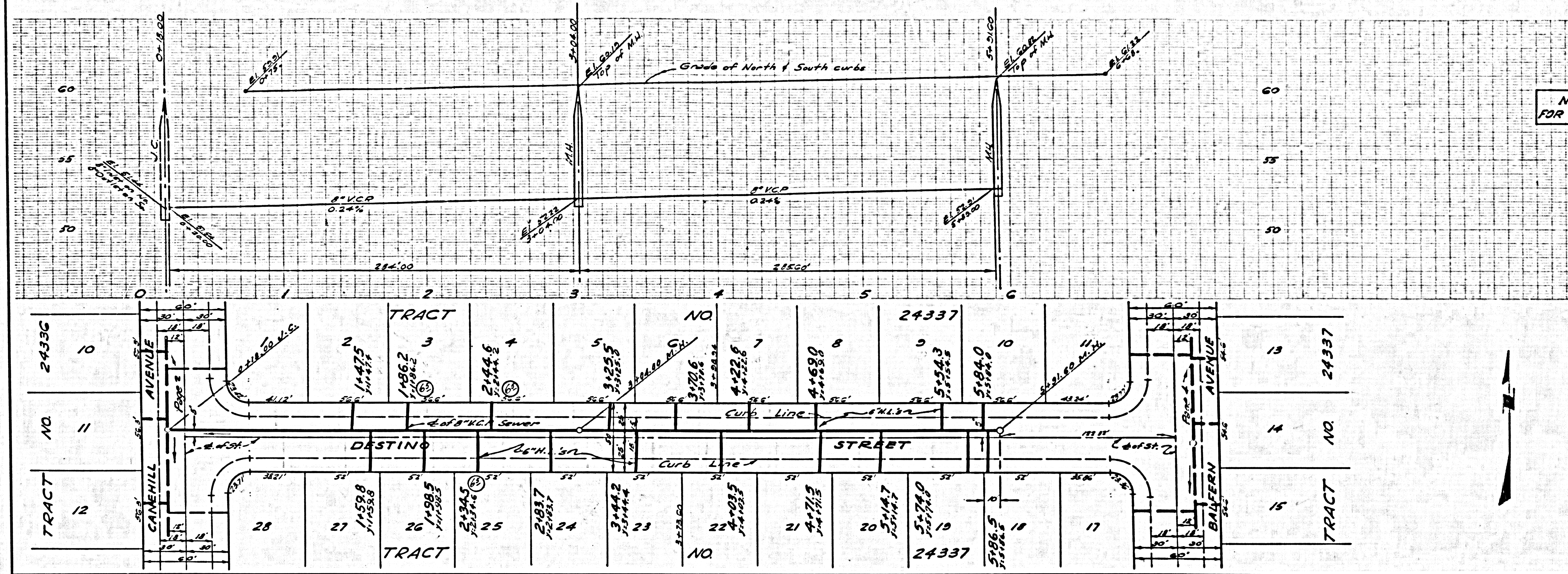


26045

RANCHO LOS COYOTES
T-3-S, R-12-W, S.B.M.
OR. 41019-1-1-64
REIMBURSEMENT CHARGE
CALL MAIN OFFICE

26,046

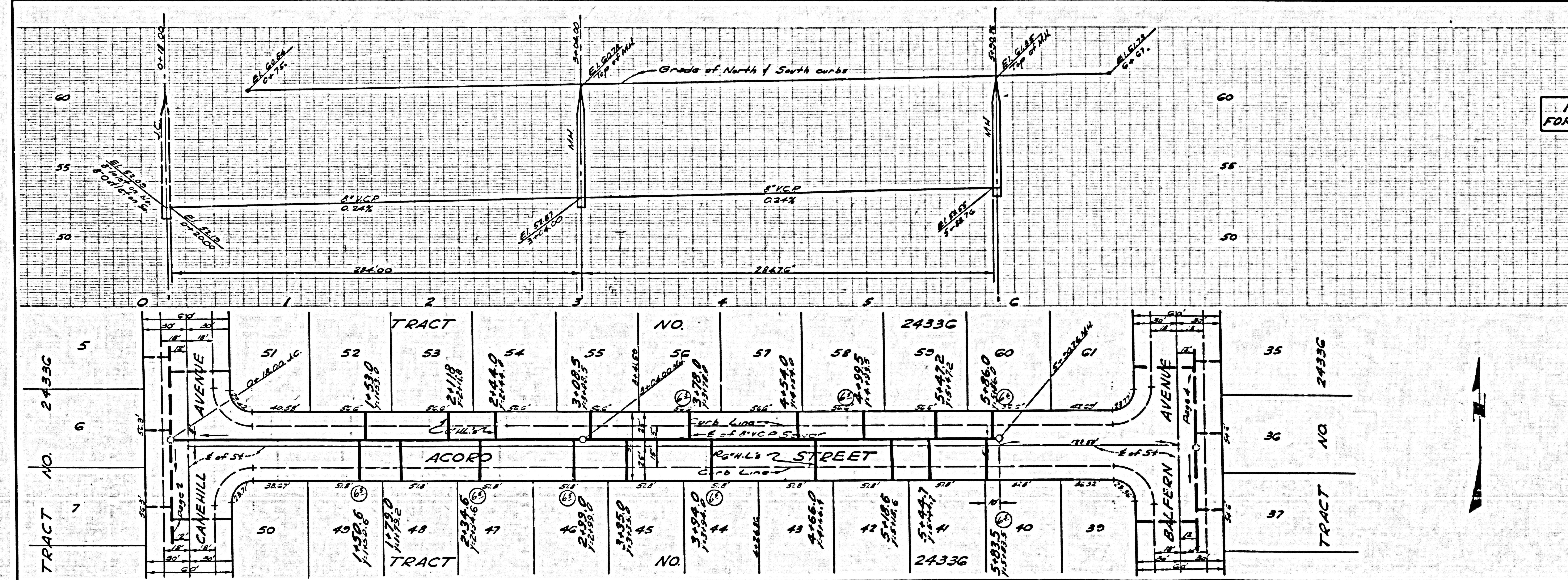
NO CHARGE FOR CONNECTIONS



12-18-07

26,047

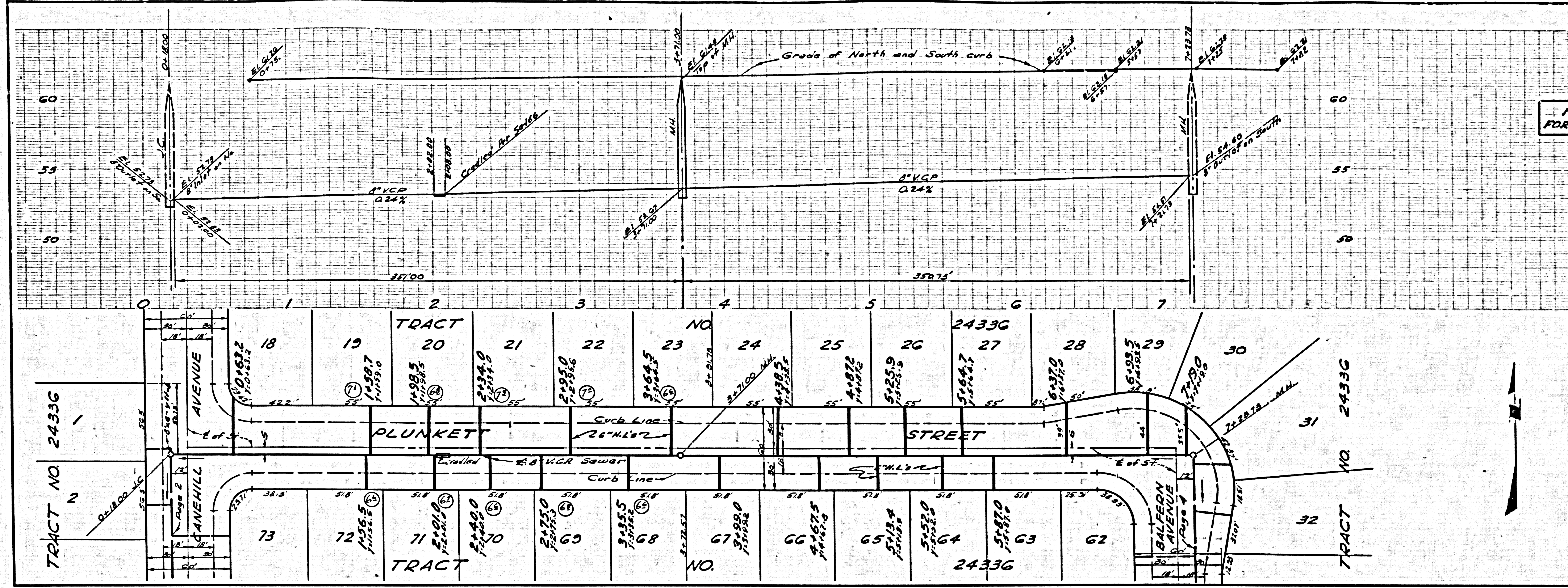
NO CHARGE FOR CONNECTIONS



12-18-07

26048

NO CHARGE FOR CONNECTIONS



62-12-67

PAGE