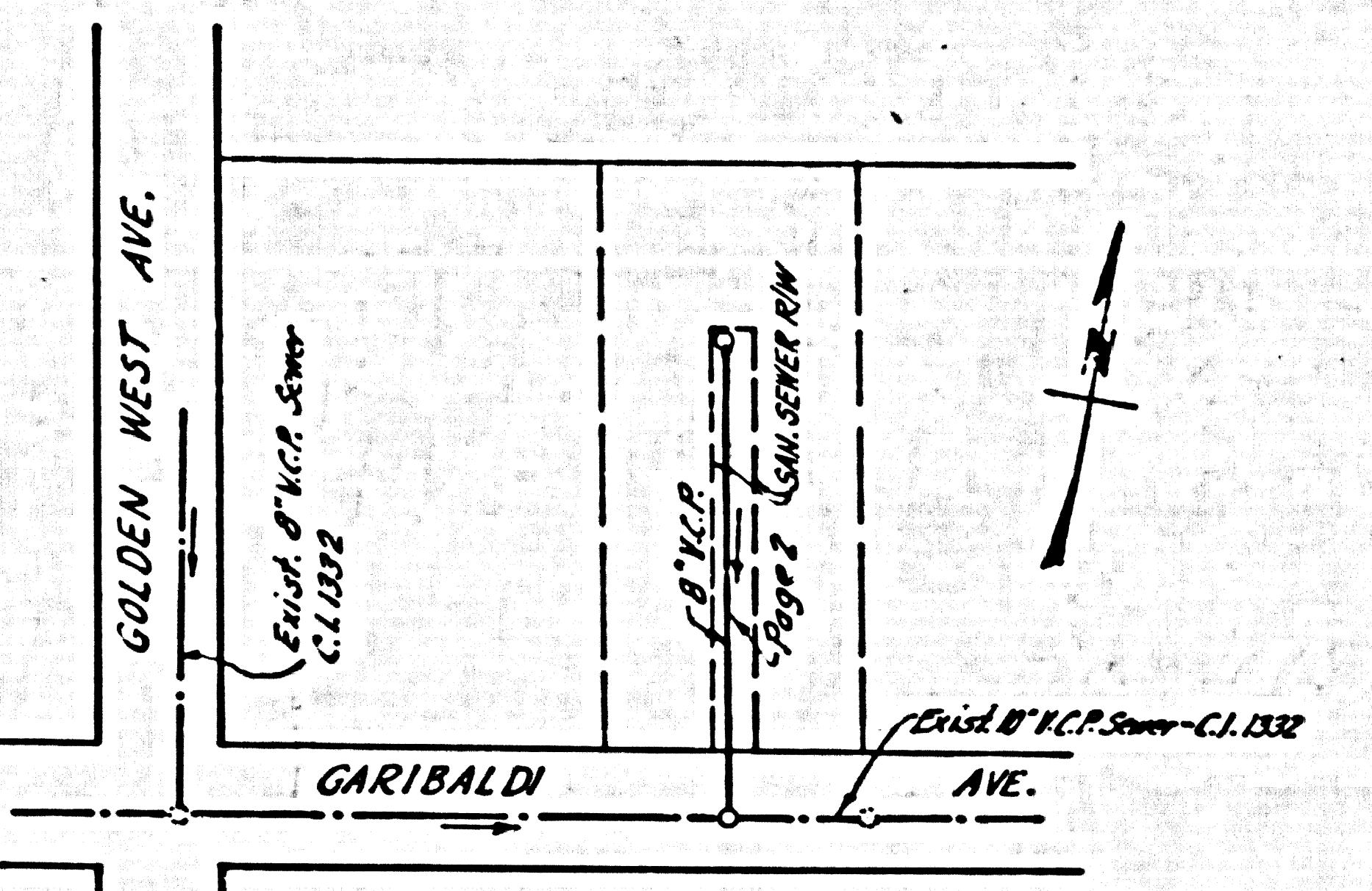


B.M. 7E-85, Elev. 412.542, F.B. M & B pg. 52
 SW Cor. Garibaldi Ave. & Golden West Ave.
 1st Spk. in curb, 10' W. of N. end of curb return



INDEX MAP
 P.C. 4658
 Scale - 1"=100'

TEMPLE CITY BLDG. DIST. NO. 5

- NOTE:
 PROFILE GRADES ON THE PROPERTY LINE OR PROPERTY LINES PRODUCED AT RIGHT ANGLES TO THE SEWER LINE AT THE CENTER LINE OF EACH MANHOLE.
- NO REPRESENTATIVE OF THE COUNTY ENGINEER WILL SURVEY OR LAYOUT ANY PORTION OF THE WORK.
- THE OWNER OR HIS AUTHORIZED REPRESENTATIVE SHALL FURNISH THE COUNTY ENGINEER WITH GRADE SHEETS AND STATION FOR ALL HOUSE LATERALS AND Y BRANCHES AND SHALL PROVIDE STAKES FOR THESE AT THEIR PROPER LOCATIONS WITH BEATING-ING PLAINLY MARKED. ANY CHANGE IN LOCATION SHALL BE REQUESTED IN WRITING BY THE OWNER OR HIS REPRESENTATIVE.
- NO REVISIONS SHALL BE MADE IN THESE PLANS WITHOUT THE APPROVAL OF THE COUNTY ENGINEER.
1. USE STANDARD MANHOLE FRAMES AND COVERS, S.A. 117, 68879-45-10998.
 2. USE STANDARD STEEP-THROAT PIPES 68879-45-10999.
 3. USE CAMBRIE METAL "WEDGE-LOCK" OR "STEEL-SEAL" FOR ALL WITHEPRED CLAY PIPE JOINTS PER SPEC'S, SEC'S 35 & 44.
 4. RESURFACE ALL TRENCH WITHIN PAVED AREA TO MEET L.A. COUNTY ROAD DEPT. OR CALIF. STATE HIGHWAY DEPT. REQUIREMENTS IN ACCORDANCE WITH PERMITS.
 5. ENCASE FOUR FEET OF SEWER AT POINTS OF INTERFERENCE WITH POLES, S.A. 119.
 6. HOUSE LATERALS TO BE CONSTRUCTED WITH INVERTS AT EIGHTY OF ANY LINE 3 FEET BELOW SURFACE OVER SEWER.
 7. ALL STRUCTURES SHALL BE BRICK SEWER STRUCTURES, S.A. 104, 68879-45-10990.
 8. FOR ALLOWABLE LEAKAGE TEST USE FORMULA NO. 1, SPEC'S, SEC. 36.
 9. MANHOLE TOPS IN IMPROVED BOWNS-OF-WAY TO BE LEVEL WITH FINISHED GRADE.
 10. THE PRIVATE ENGINEER IS TO FURNISH THE HOUSE LATERAL DEPTH AT THE R/W LINE BELOW THE ELEVATION OF THE SURFACE OVER SEWER FOR EACH HOUSE LATERAL, ON THE GRADE SHEETS.

NOTE:
 THE CONTRACTOR SHALL NOTIFY THE CONSTRUCTION AND STORM DRAIN DIVISION BY TELEPHONE, MADISON 9-4747, EXT. 362, AT LEAST 24 HOURS BEFORE STARTING ANY WORK UNDER THIS CONTRACT.

NO CHARGE FOR CONNECTIONS
 71 79 S. Garibaldi St.

R/W EAST OF GOLDEN WEST AVE.

PRIVATE CONTRACT NO. 4658

W.S. 44

1 SHEET 2 PAGES

SCALE: VERT. 1"=4' HORIZ. 1"=40'

PREPARED IN THE OFFICES OF
 CHARLES E. GLIDDEN, DUARTE, CAL.

By: *Charles E. Glidden*
 REG. C. E. NO. 4484

FOR LEGEND SEE PLAN NO. S-A-64

25,885

NOTE:
 GRADES TO WHICH THIS IMPROVEMENT IS TO BE CONSTRUCTED ARE SHOWN ON PLANS AND PROFILES. GRADE POINTS FOR TOP OF CURB, CENTER LINE OF STREET, OR CENTER LINE OF ALLEYS ARE SHOWN BY CIRCLES ON PROFILES AT ALL POINTS BETWEEN MANHOLE POINTS.

ELEVATIONS ARE IN FEET ABOVE U.S.C. & G.S. SEA LEVEL, DATUM OF 1929.

THE DRAWINGS AND THE DATA HEREON ARE HEREBY MADE A PART OF THE SPECIFICATIONS.

WHOSE SHALL BE CONSTRUCTED ACCORDING TO SPECIFICATIONS ON FILE IN THE OFFICE OF THE COUNTY ENGINEER AND SHALL BE PROSECUTED ONLY IN THE PRESENCE OF THE COUNTY ENGINEER.

BEFORE WORK CAN BE STARTED, THE CONTRACTOR MUST OBTAIN A PERMIT TO RECLAIM IN COUNTY STREETS FROM THE L.A. COUNTY ROAD DEPT. AND READ A REPORT WITH THE COUNTY ENGINEER, ROOM 234 MAIN AMERICAN BUILDING, 333 SO. BROADWAY SUPPLEMENT TO COVER THE COST OF CONSTRUCTION INSPECTION AND RECORD PLANS.

APPROVAL OF THIS PLAN BY THE COUNTY OF LOS ANGELES DOES NOT CONSTITUTE A REPRESENTATION AS TO THE ACCURACY OF THE LOCATION OF OR THE EXISTENCE OR NON-EXISTENCE OF ANY UNDERGROUND UTILITY PIPE, OR STRUCTURE WITHIN THE LIMITS OF THIS PROJECT. THIS NOTE APPLIES TO ALL PAGES.

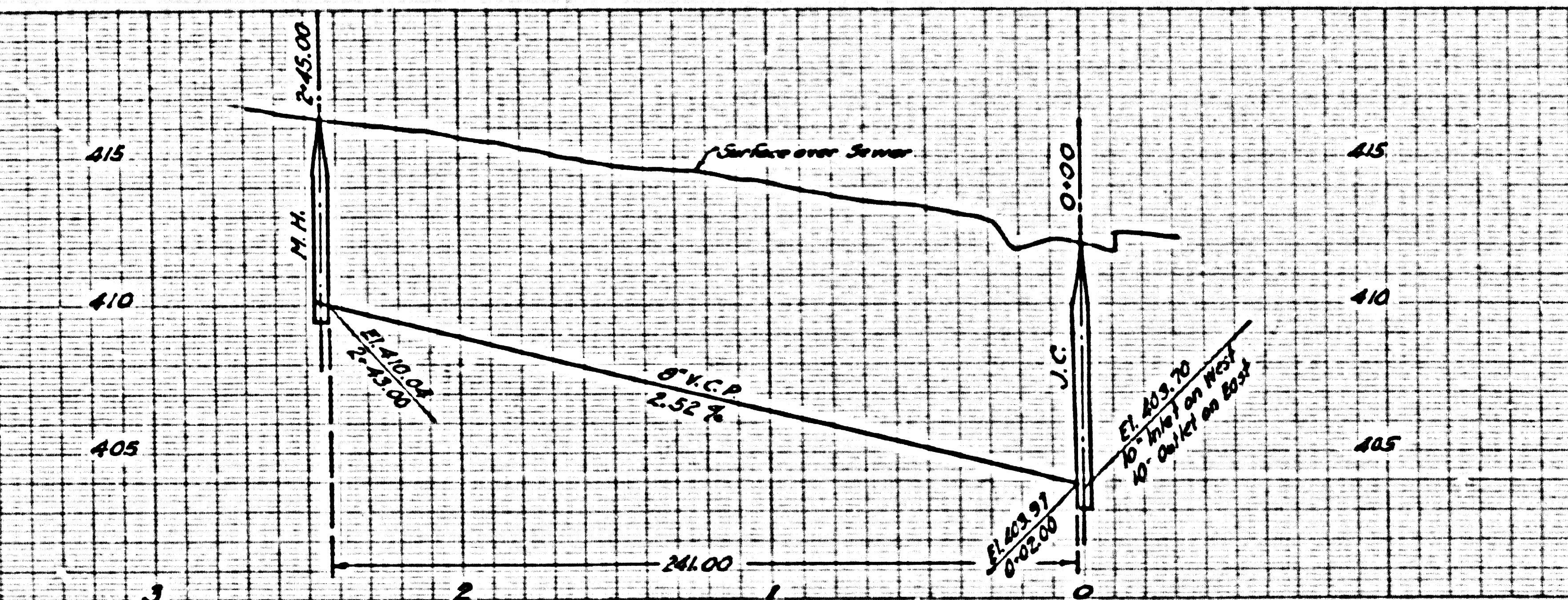
IF WORK IS TO BE DONE IN A STATE HIGHWAY, A PERMIT MUST BE OBTAINED FROM THE STATE OF CALIFORNIA DIVISION OF HIGHWAYS, 120 SOUTH BRIMING STREET.

COUNTY OF LOS ANGELES, CALIFORNIA

APPROVED, JOHN A. LAMBE, COUNTY ENGINEER
 APPROVED, A. M. RAWN, CHIEF ENGINEER

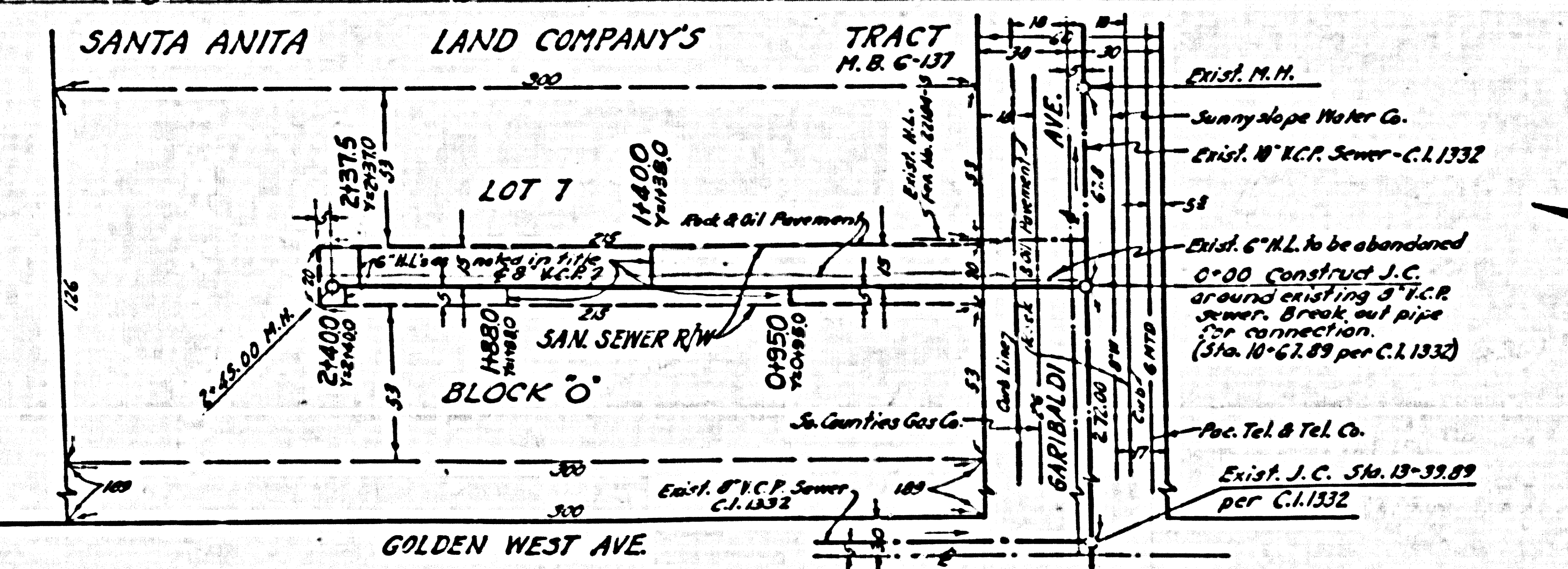
By: *John A. Lambe* By: *A. M. Rawn*
 SANITATION ENGINEER OFFICE ENGINEER

CHECKED BY: *W. C. Onda* 5-9-58
 OFFICE OF COUNTY ENGINEER, REG. C. E. NO. 4484



NO CHARGE FOR CONNECTIONS

25,886



Dist. M.M.
 Sunny slope Water Co.
 Exist. 6" V.C.P. Sewer - C.I. 1332
 38
 Exist. 6" H.L. to be abandoned
 0+00 Construct J.C.
 around existing 3" V.C.P.
 sewer's 3" brick out pipe
 for connection.
 (Sta. 10+67.89 per C.I. 1332)
 Pac. Tel. & Tel. Co.
 Exist. J.C. Sta. 13+39.89
 per C.I. 1332

25,886