

B.M. - BY 4205, Elev. 158.029, (1953)
 Ed. Dept. B.M. top at the S.W. cor. of
 Whittier Blvd. & Gerhart Ave 266 S.
 4'-18" W. & Int. 21' S of E.C.C. Riveria Quad

NOTE:
 THE CONTRACTOR SHALL NOTIFY THE CONSTRUCTION AND
 STORM DRAIN DIVISION BY TELEPHONE, MADISCH 9-4747,
 EXT. 352, AT LEAST 24 HOURS BEFORE STARTING ANY
 WORK UNDER THIS CONTRACT.

EAST LOS ANGELES BLDG. DIST. NO. 6

- NOTES:
- PROFILES SHOWN ON THE PROPERTY LINE OR PROPERTY LINES PRODUCED AT RIGHT ANGLES TO THE SEWER LINE AT THE CENTER LINE OF EACH MANHOLE.
 - NO REPRESENTATIVE OF THE COUNTY ENGINEER WILL SURVEY OR LAYOUT ANY PORTION OF THE WORK.
 - THE OWNER OR HIS AUTHORIZED REPRESENTATIVE SHALL FURNISH THE COUNTY ENGINEER WITH GRADE SHEETS AND STATIONING FOR ALL HOUSE LATERALS AND Y BRANCHES AND SHALL PROVIDE STAKES FOR THEM AT THEIR PROPER LOCATIONS WITH STATIONING AND PLAIN LANGUAGE. ANY CHANGE IN LOCATION SHALL BE INDICATED BY THE OWNER OR HIS REPRESENTATIVE.
 - NO REVISIONS SHALL BE MADE IN THESE PLANS WITHOUT THE APPROVAL OF THE COUNTY ENGINEER.
 - USE STANDARD MANHOLE FRAMES AND COVERS, S.A. 117, EXCEPT AS NOTED.
 - USE STANDARD STRENGTH PIPE EXCEPT AS NOTED.
 - USE CEMENT MORTAR "WEDGE-LOCK" OR "SPREAD-SEAL" FOR ALL V.C.P. JOINTS PER SPEC'S, SECT. 24 (48).
 - RESURFACE ALL TRENCH WITHIN PAVED AREA TO MEET L.A. COUNTY ROAD DEPT. OR CALIF. STATE HIGHWAY DEPT. REQUIREMENTS IN ACCORDANCE WITH PERMITS.
 - ENCASE FOUR FEET OF SEWER AT POINTS OF INTERFERENCE WITH POLES, S.A. 119.
 - SEWER MANHOLES TO BE CONSTRUCTED UNDER EXISTING OR PROPOSED DRIVEWAYS OR SIDEWALKS AS SHOWN ON THESE PLANS.
 - ALL STRUCTURES SHALL BE BRICK OR CONCRETE, S.A. 104, EXCEPT AS NOTED.
 - FOR ALLOWABLE LEAKAGE TEST USE FORMULA NO. 1 SPEC'S, SEC. 24.
 - MANHOLE TOPS IN UNIMPROVED RIGHTS-OF-WAY TO BE 6" ABOVE FINISHED GRADE.

PROFILE ALIGNMENT AND GRADE OF P.C. 4661
 SANITARY SEWERS PAGE 1

TO BE CONSTRUCTED IN
 SANITARY SEWER RIGHT OF WAY (26,388)
 (GRACE PLACE - PRIVATE ST.)

PRIVATE CONTRACT NO. 4661

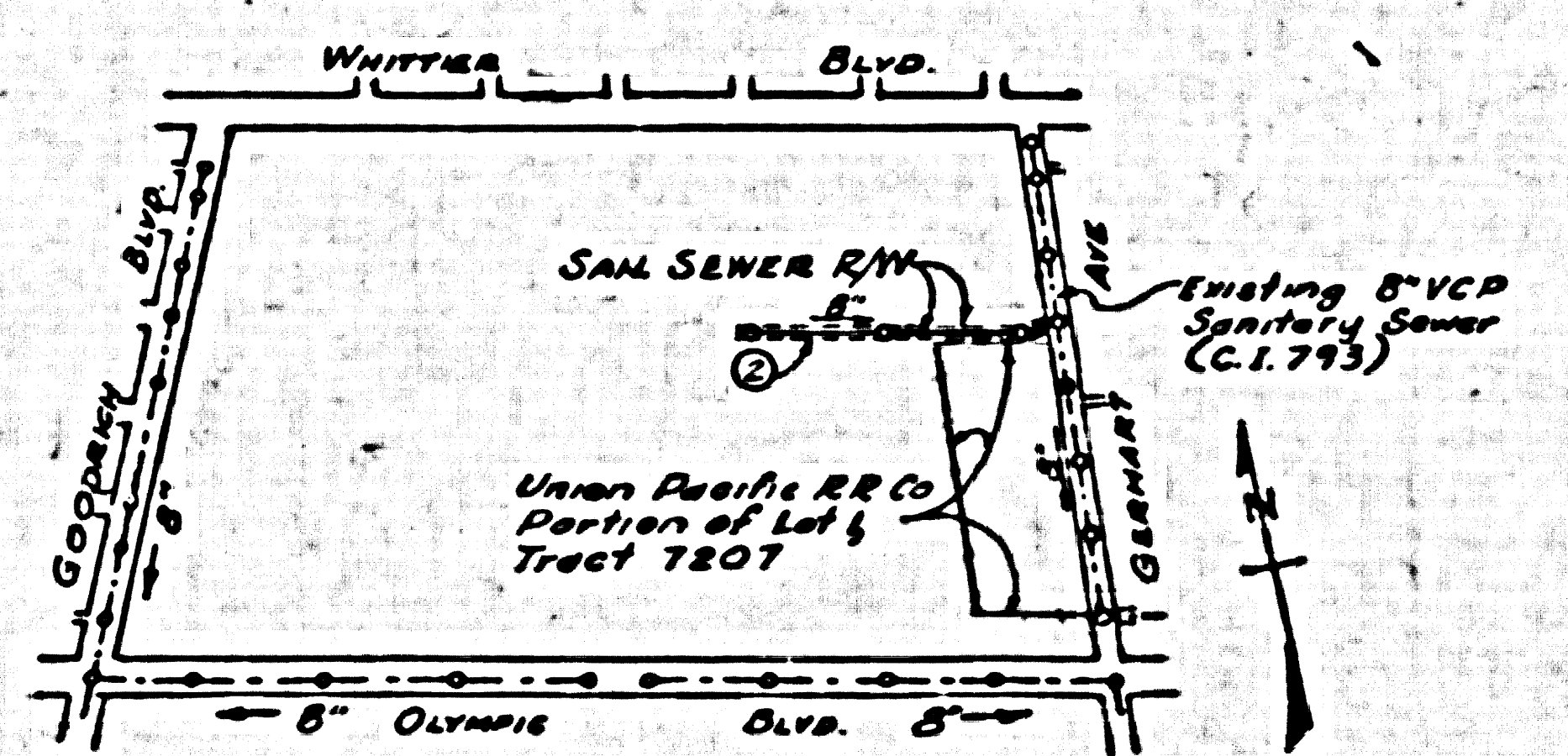
W.S. 36
 1 SHEET, 2 PAGES

SCALE: VERT. 1" = 4' HORIZ. 1" = 40'
 AUGUST, 1958
 PREPARED IN THE OFFICES OF

Leonard M. Clausen
 LEONARD M. CLAUSEN REG. C. E. NO. 1343

FOR LEGEND SEE PLAN NO. S-A-64

CONNECTION CHARGES
 AS INDICATED
 7.77⁰ per foot 9-7-58



INDEX MAP
 SCALE 1" = 600'
 PORTION OF LOT 1, TRACT 7207
 P.C. 4661

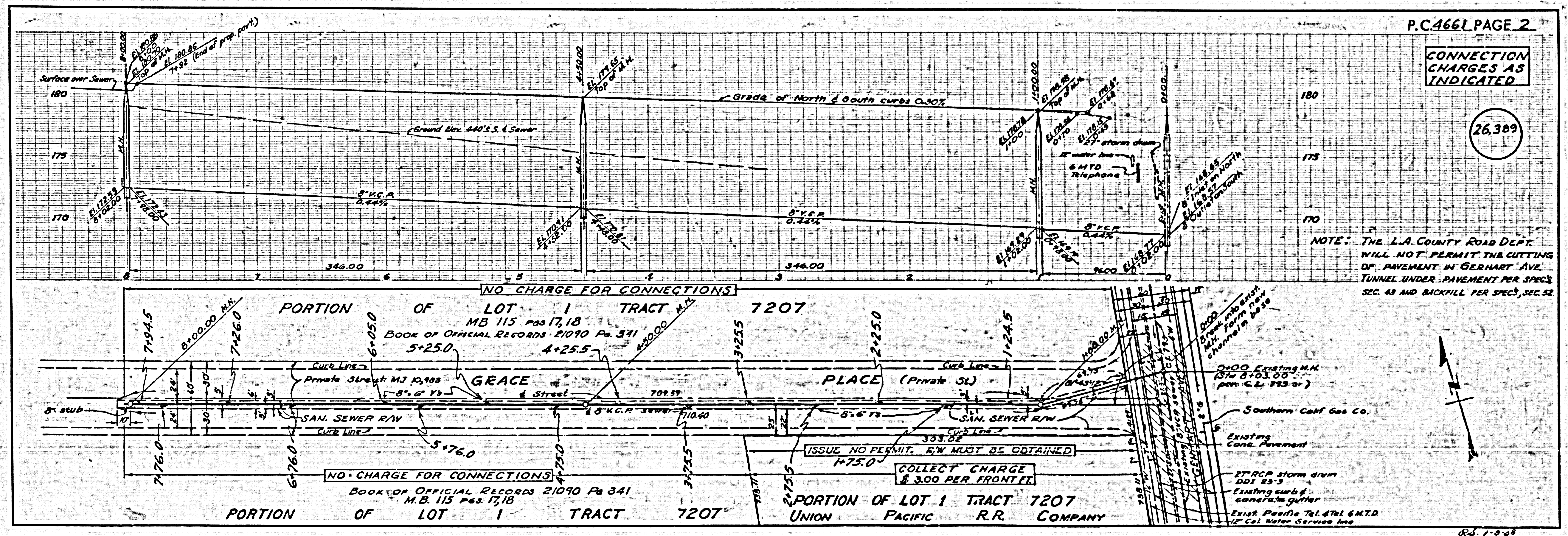
NOTE:
 GRADES TO WHICH THIS IMPROVEMENT IS TO BE CONSTRUCTED ARE SHOWN ON PLANS AND PROFILE. GRADE POINTS FOR
 TOP OF CURBS, CENTER LINE OF STREETS, OR CENTER LINE OF ALLEYS ARE SHOWN BY CIRCLES ON PROFILES. AT ALL POINTS BETWEEN
 DESIGNATED POINTS THE GRADE SHALL BE ESTABLISHED SO AS TO CONFORM TO A STRAIGHT LINE DRAWN BETWEEN SAID DESIGNATED
 POINTS.
 ELEVATIONS ARE IN FEET ABOVE M.S.L. UNLESS OTHERWISE SPECIFIED.
 THIS DRAWING AND THE DATA HEREON ARE HEREBY MADE A PART OF THE SPECIFICATIONS.
 WORK SHALL BE CONSTRUCTED ACCORDING TO SPECIFICATIONS ON FILE IN THE OFFICE OF THE COUNTY ENGINEER AND SHALL
 BE PROSECUTED ONLY IN THE PRESENCE OF THE COUNTY ENGINEER.
 BEFORE WORK CAN BE STARTED, THE CONTRACTOR MUST OBTAIN A PERMIT TO RECLAIM IN COUNTY STREETS FROM THE
 L.A. COUNTY ROAD DEPT. THE PERMIT SHALL BE OBTAINED FROM THE COUNTY ENGINEER, ROOM 201 SAN AMERICAN BUILD-
 ING, 128 SO. HOUGHAVEN BLVD. SUPERVISOR TO COVER THE COST OF CONSTRUCTION INSPECTION AND RECORD PLANS.
 APPROVAL OF THIS PLAN BY THE COUNTY OF LOS ANGELES DOES NOT CONSTITUTE A REPRESENTATION AS TO THE ACCURACY
 OF THE LOCATION OR OF THE EXISTENCE OR NON-EXISTENCE OF ANY UNDERGROUND UTILITY PIPE, OR STRUCTURE WITHIN THE
 LIMITS OF THIS PROJECT. THIS NOTE APPLIES TO ALL PAGES.
 IF WORK IS TO BE DONE IN A STATE HIGHWAY, A PERMIT MUST BE OBTAINED FROM THE STATE OF CALIFORNIA, DIVISION OF
 HIGHWAYS, 128 SOUTH SPRING STREET.

COUNTY OF LOS ANGELES, CALIFORNIA

APPROVED, JOHN A. LAMME, COUNTY ENGINEER
 APPROVED, A. M. BAWN, CHIEF ENGINEER
 BY *John A. Lamme* BY *A. M. Bawn*
 COUNTY ENGINEER CHIEF ENGINEER

CHECKED BY *St. Oude* 8-10-58
 OFFICE OF COUNTY ENGINEER, BLDG. C. E. NO. 2406

APPROVED BY INDUSTRIAL WASTE DIVISION
 BY *Bernard Volzky* DATE: 8/20/58

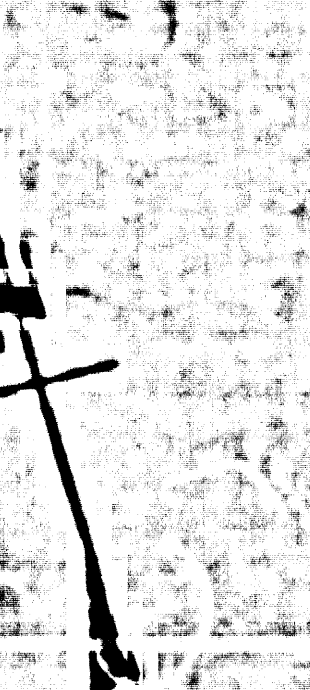


P.C. 4661 PAGE 2

CONNECTION CHARGES AS INDICATED

26,388

NOTE: THE L.A. COUNTY ROAD DEPT.
 WILL NOT PERMIT THE CUTTING
 OF PAVEMENT IN GERHART AVE.
 TUNNEL UNDER PAVEMENT PER SPEC'S
 SEC. 43 AND BACKFILL PER SPEC'S, SEC. 52



RS. 1-3-58