

The Record outlet invert elevation 135.67 of M.H. at 3+51.75 as shown on Plan and Profile of C.I. 45C Sheet 12 is used as the basis of all elevations shown on this improvement.

# FIRESTONE BLDG. DIST. NO. 1

PROFILE ALIGNMENT AND GRADE OF  
**SANITARY SEWERS** PAGE 1

**WALNUT TERRACE**  
PRIVATE CONTRACT NO. 4675

25,722

W.S. 75  
1 SHEET, 2 PAGES

SCALE: VERT. 1"=4' HORIZ. 1"=40' JAN. 1958

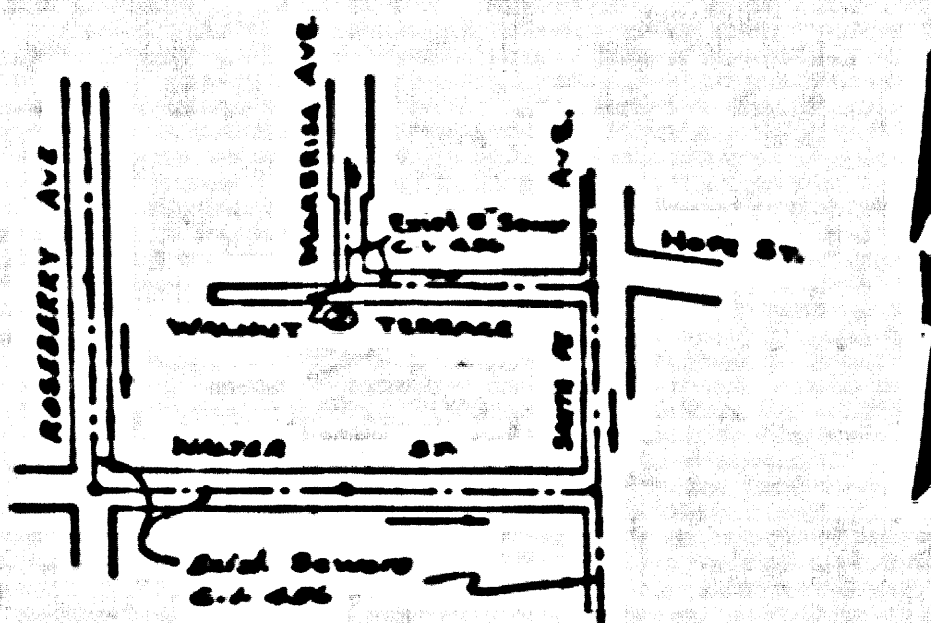
PREPARED IN THE OFFICES OF  
**OLSON SURVEYING SERVICE**

BY *Arthur C. Olson*  
REG. C. E. NO. 3112

FOR LEGEND SEE PLAN NO. S-A-64

- NOTES**
- PROVIDE STAKES ON THE PROPERTY LINE OR PROPERTY LINES PRODUCED AT RIGHT ANGLES TO THE SEWER LINE AT THE CENTER LINE OF EACH MANHOLE.
  - NO REPRESENTATIVE OF THE COUNTY ENGINEER WILL SURVEY OR LAYOUT ANY PORTION OF THE WORK.
  - THE OWNER OR HIS AUTHORIZED REPRESENTATIVE SHALL FURNISH THE COUNTY ENGINEER WITH GRADE SHEETS AND STATION FOR ALL HOUSE LATERALS AND T BRANCHES AND SHALL PROVIDE STAKES FOR THEM AT THEIR PROPER LOCATIONS WITH STATIONING PLAINLY MARKED. ANY CHANGE IN LOCATION SHALL BE REQUESTED IN WRITING BY THE OWNER OR HIS REPRESENTATIVE.
  - NO REVISIONS SHALL BE MADE IN THESE PLANS WITHOUT THE APPROVAL OF THE COUNTY ENGINEER.
  - USE STANDARD MANHOLE FRAMES AND COVERS, S-A-117, EXCEPT AS NOTED.
  - USE STANDARD STRENGTH PIPE EXCEPT AS NOTED.
  - USE CEMENT MORTAR "WEDGE-LOCK" OR "SPREAD-SEAL" FOR ALL JUNCTIONS. CLAY PIPE JOINTS FOR SIZES 36" & 48".
  - RESURFACE ALL TRENCHES WITHIN PAVED AREAS TO MEET L. A. COUNTY ROAD DEPT., OR CALIF. STATE HIGHWAY DEPT. REQUIREMENTS IN ACCORDANCE WITH PERMITS.
  - SHOULDER FOUR FEET OF SEWER AT POINTS OF INTERFERENCE WITH POLES, S-A-116.
  - HOUSE LATERALS TO BE CONSTRUCTED WITH 1/2" RISE PER FOOT TO PROPERTY LINE.
  - ALL STRUCTURES SHALL BE BRICK SEWER STRUCTURES, S-A-104, EXCEPT AS NOTED.
  - FOR ALLOWABLE LEAKAGE TEST USE FORMULA NO. 1 SPEC'S, SEC. 5-4
  - MANHOLE TOPS IN UNIMPROVED RIGHTS-OF-WAY TO BE 6" ABOVE FINISHED GRADE.
  - THE PRIVATE ENGINEER IS TO FURNISH THE HOUSE LATERAL DEPTH AT THE PROPERTY LINE BELOW THE ELEVATION OF THE SURFACE OVER SEWER FOR EACH HOUSE LATERAL, ON THE GRADE SHEET.

**NOTE:**  
THE CONTRACTOR SHALL NOTIFY THE CONSTRUCTION AND STORM DRAIN DIVISION BY TELEPHONE, MADISON 9-4747, EXT. 362, AT LEAST 24 HOURS BEFORE STARTING ANY WORK UNDER THIS CONTRACT.



INDEX MAP  
Sheet 11-4000  
P.C. 4675

No CHARGE FOR CONNECTIONS  
77 7/20/58  
3-13-58

**NOTES**

GRADE TO WHICH THIS IMPROVEMENT IS TO BE CONSTRUCTED ARE SHOWN ON PLANS AND PROFILES. GRADE POINTS FOR TOP OF CURB, CENTER LINE OF STREETS, OR CENTER LINE OF ALLEYS ARE SHOWN BY CIRCLES ON PROFILES. AT ALL POINTS BETWEEN ADJACENT POINTS THE GRADE SHALL BE ESTABLISHED SO AS TO COMFORM TO A STRAIGHT LINE BETWEEN SAID DESIGNATED POINTS.

SURVEYING AND THE DATA HEREON ARE HEREBY MADE A PART OF THE SPECIFICATIONS.

WORK SHALL BE CONSTRUCTED ACCORDING TO SPECIFICATIONS ON FILE IN THE OFFICE OF THE COUNTY ENGINEER AND SHALL BE PROSECUTED ONLY IN THE PRESENCE OF THE COUNTY ENGINEER.

BEFORE WORK CAN BE STARTED, THE CONTRACTOR MUST OBTAIN A PERMIT TO EXCAVATE IN COUNTY SERVICE FROM THE L. A. COUNTY ROAD DEPT., 120 W. 2ND ST. AND SHALL DEPOSIT WITH THE COUNTY ENGINEER, ROOM 234 PAV. AMERICAN BLDG., 133 SO. HOODWAY, SUFFICIENT TO COVER THE COST OF CONSTRUCTION INSPECTION AND RECORD PLANS.

APPROVAL OF THIS PLAN BY THE COUNTY OF LOS ANGELES DOES NOT CONSTITUTE A REPRESENTATION AS TO THE ACCURACY OF THE LOCATION OF OR THE EXISTENCE OR NON-EXISTENCE OF ANY UNDERGROUND UTILITY PIPE, OR STRUCTURE WITHIN THE LIMITS OF THIS PROJECT. THIS NOTE APPLIES TO ALL PAGES.

IF WORK IS TO BE DONE IN A STATE HIGHWAY, A PERMIT MUST BE OBTAINED FROM THE STATE OF CALIFORNIA, DIVISION OF HIGHWAYS, 138 SOUTH SPRING STREET.

COUNTY OF LOS ANGELES, CALIFORNIA

APPROVED, JOHN A. LAMBE, COUNTY ENGINEER  
BY *John A. Lambe*  
SANITATION ENGINEER

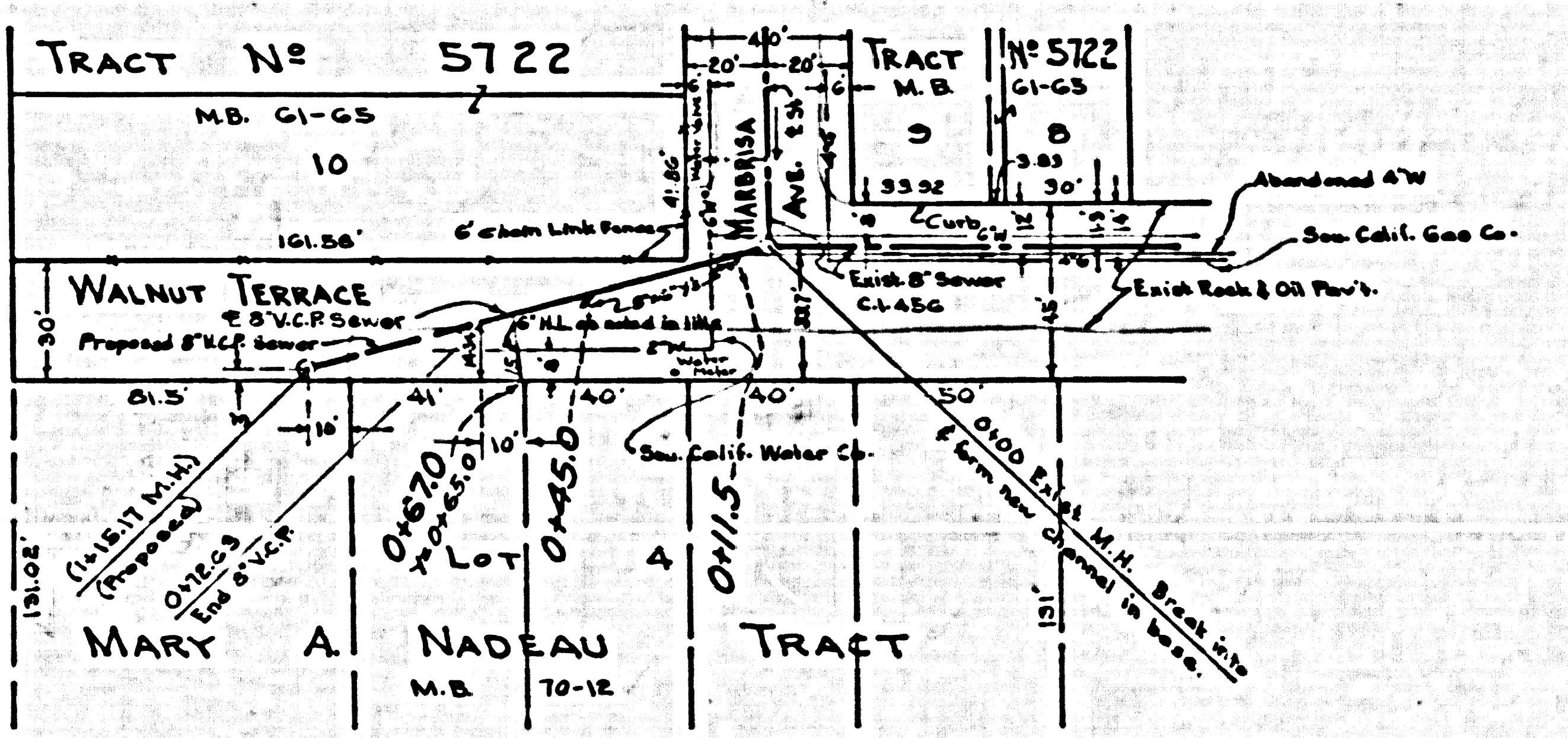
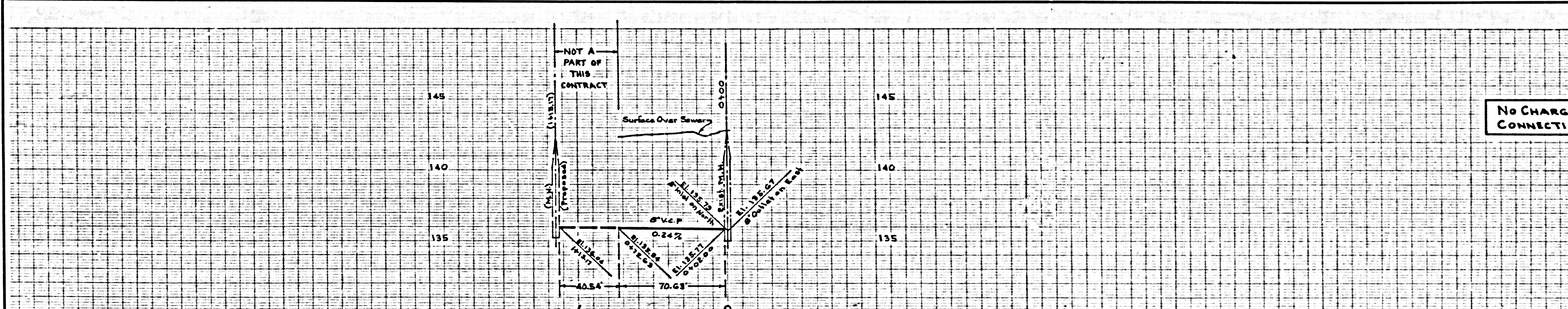
APPROVED, A. M. RAWN, CHIEF ENGINEER  
BY *A. M. Rawn*  
OFFICE ENGINEER

CHECKED BY *W. J. White* 2-11-58  
OFFICE OF COUNTY ENGINEER, REG. C. E. NO. 2355

P.C. 4675, PAGE 2

25,723

No CHARGE FOR CONNECTIONS



8/21/58