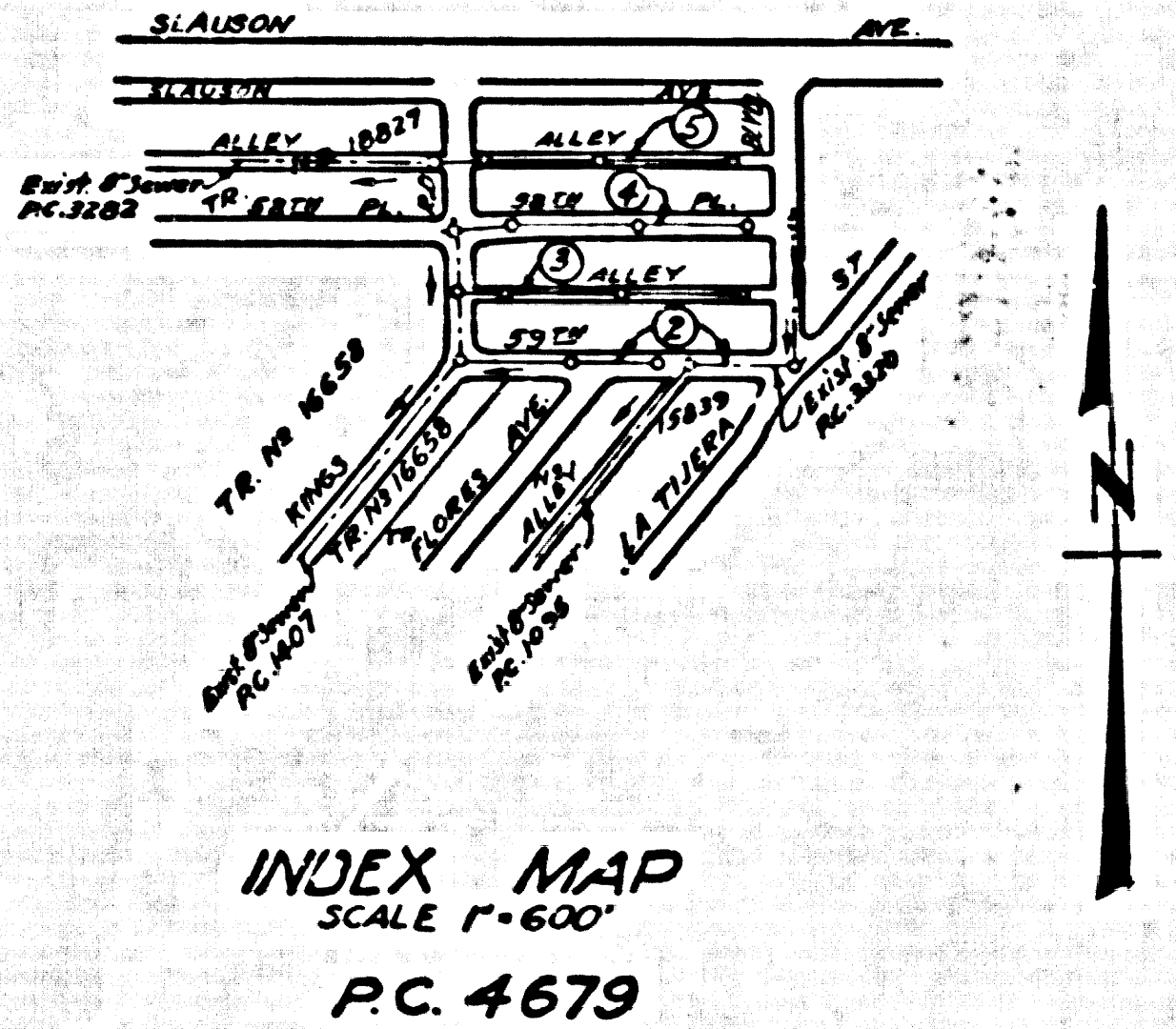


L. Q. 754-360 B.M. A14 - Elev. 184.17 Ball Marker set in back
211 W. N.W. return of N.E. Ramp of J. Slouson Ave. to
La Cienega Blvd. (P.B. 200-1) L.A.I. Co.

NOTE: Add 5.775 to bench mark and
all elevations shown hereon to
convert to U.S.C. & G.S. elevations
Add 5.375 to all elevations shown hereon to
agree with L.A. County Road Dept's B.M.'s.
(Slouson Ave. Curve) shown as L. Q. 254-359



LENNOX BLDG. DIST. NO. 7

- NOTES:
- PROVIDE STAKES ON THE PROPERTY LINE OR PROPERTY LINES PRODUCED AT RIGHT ANGLES TO THE SEWER LINE AT THE CENTER LINE OF EACH MANHOLE.
 - NO REPRESENTATIVE OF THE COUNTY ENGINEER WILL SURVEY OR LAYOUT ANY PORTION OF THE WORK.
 - THE OWNER OR HIS AUTHORIZED REPRESENTATIVE SHALL FURNISH THE COUNTY ENGINEER WITH GRADE SHEETS AND STATIONING FOR ALL HOUSE LATERALS AND Y BRANCHES AND SHALL PROVIDE STAKES FOR THESE AT THEIR PROPER LOCATIONS WITH STATIONING. ANY CHANGE IN LOCATION SHALL BE REQUESTED IN WRITING BY THE OWNER OR HIS REPRESENTATIVE.
 - NO REVISIONS SHALL BE MADE IN THESE PLANS WITHOUT THE APPROVAL OF THE COUNTY ENGINEER.
 - USE STANDARD MANHOLE FRAMES AND COVERS, S-A-117, EXCEPT AS NOTED.
 - USE STANDARD STRENGTH PIPE EXCEPT AS NOTED.
 - USE "MOUSE-LOCK" OR "SPRIG-SEAL" FOR ALL WITFRED CLAY PIPE JOINTS.
 - USE CEMENT MORTAR OF P.C.E. SPEC'S. 362.3, 362.3, 362.3 AND 46.
 - RESURFACE ALL TRENCH WITHIN PAVED AREA TO MEET L.A. COUNTY ROAD DEPT., OR CALIF. STATE HIGHWAY DEPT. REQUIREMENTS IN ACCORDANCE WITH PERMITS.
 - ENCASE FOUR FEET OF SEWER AT POINTS OF INTERFERENCE WITH POLES, S-A-119.
 - HOUSE LATERALS TO BE CONSTRUCTED WITH 8" V.C.P. AT PROPERTY LINE - 2' FEET BELOW CURB GRADE OR CENTERLINE OF ALLEY EXCEPT AS NOTED.
 - ALL STRUCTURES SHALL BE BRICK SEWER STRUCTURES, S-A-184, EXCEPT AS NOTED.
 - FOR ALLOWABLE SLOPES USE THE FORMULA $H = \frac{V}{S}$ SPEC. 3, SEC. 54.
 - THE PRIVATE ENGINEER IS TO FURNISH THE HOUSE LATERAL DEPTH AT THE PROPERTY LINE BELOW THE TOP OF CURB ELEVATION OR CENTERLINE OF ALLEY FOR EACH HOUSE LATERAL ON THE GRADE SHEET.

NOTE:
THE CONTRACTOR SHALL NOTIFY THE CONSTRUCTION AND STORM DRAIN DIVISION BY TELEPHONE, MADISON 9-4747, EXT. 362, AT LEAST 24 HOURS BEFORE STARTING ANY WORK UNDER THIS CONTRACT.

PROFILE ALIGNMENT AND GRADE OF P.C. 4679
SANITARY SEWERS PAGE 1

TO BE CONSTRUCTED IN
TRACT N^o 24049 (26,069)

PRIVATE CONTRACT NO. 4679

W.S. 24
3 SHEETS, 5 PAGES

SCALE: HORIZ. 1"=40' VERT. 1"=4'
JANUARY, 1958

PREPARED IN THE OFFICES OF
L.A. INVESTMENT CO.

By: *C.R. Manda*
REG. C. E. NO. 12423

FOR LEGEND SEE PLAN NO. S-A-64

NOTE:
GRADES TO WHICH THE IMPROVEMENT IS TO BE CONSTRUCTED ARE SHOWN ON PLANS AND PROFILE. GRADE POINTS FOR TOP OF CURB, CENTER LINE OF STREET, OR CENTER LINE OF ALLEY ARE SHOWN BY CIRCLES ON PROFILES. ALL POINTS BETWEEN DESIGNATED POINTS THE GRADE SHALL BE ESTABLISHED SO AS TO STRAIGHTEN LINE BETWEEN SAID DESIGNATED POINTS.
ELEVATIONS ARE IN FEET ABOVE CITY DATUM UNLESS OTHERWISE SPECIFIED AS SEA LEVEL DATUM OF 1929.
THIS DRAWING AND THE DATA HEREON ARE HEREBY MADE A PART OF THE SPECIFICATIONS.
WORK SHALL BE CONSTRUCTED ACCORDING TO SPECIFICATIONS ON FILE IN THE OFFICE OF THE COUNTY ENGINEER AND SHALL BE PROSECUTED ONLY IN THE PRESENCE OF THE COUNTY ENGINEER.
BEFORE WORK CAN BE STARTED, THE CONTRACTOR MUST OBTAIN A PERMIT TO EXCAVATE BY COUNTY SHEETS FROM THE L.A. COUNTY ROAD DEPT., THE W. BUREAU, AND MAKE A REPORT WITH THE COUNTY ENGINEER, ROOM 304 AMERICAN BLDG., 300 S. BROADWAY IMPROVEMENT TO COVER THE COST OF CONSTRUCTION INSPECTION AND RECORD PLANS.
APPROVAL OF THIS PLAN BY THE COUNTY OF LOS ANGELES DOES NOT CONSTITUTE A REPRESENTATION AS TO THE ACCURACY OF THE LOCATION OF OR THE EXISTENCE OR NON-EXISTENCE OF ANY UNDERGROUND UTILITY PIPE, OR STRUCTURE WITHIN THE LIMITS OF THIS PROJECT. THE NOTE APPLIES TO ALL PAGES.
IF WORK IS TO BE DONE IN A STATE HIGHWAY, A PERMIT MUST BE OBTAINED FROM THE STATE OF CALIFORNIA, DIVISION OF HIGHWAYS, 128 SOUTH SPRING STREET.

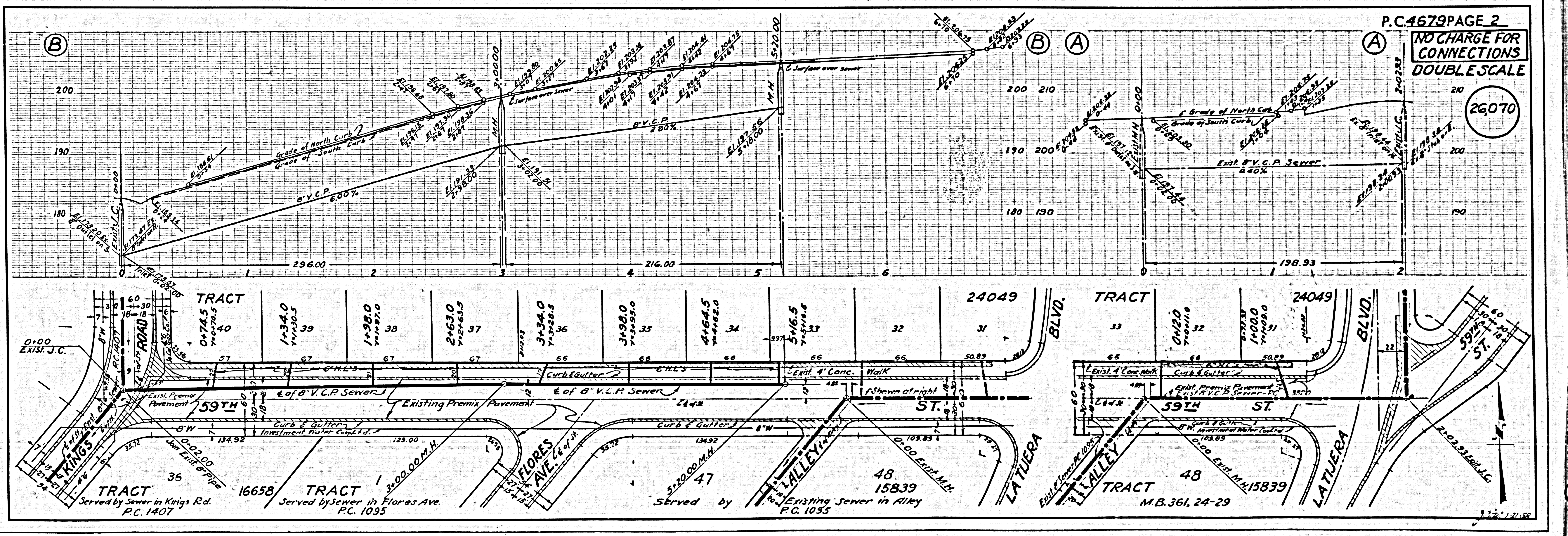
COUNTY OF LOS ANGELES, CALIFORNIA

APPROVED, JOHN A. LAMBE, COUNTY ENGINEER
BY: *J.A. Hughes*
SANITATION ENGINEER

APPROVED, A. B. BAWM, CHIEF ENGINEER
CO. SEAL. ENG. NO. 5
BY: *A.B. Bawm*
OFFICE ENGINEER

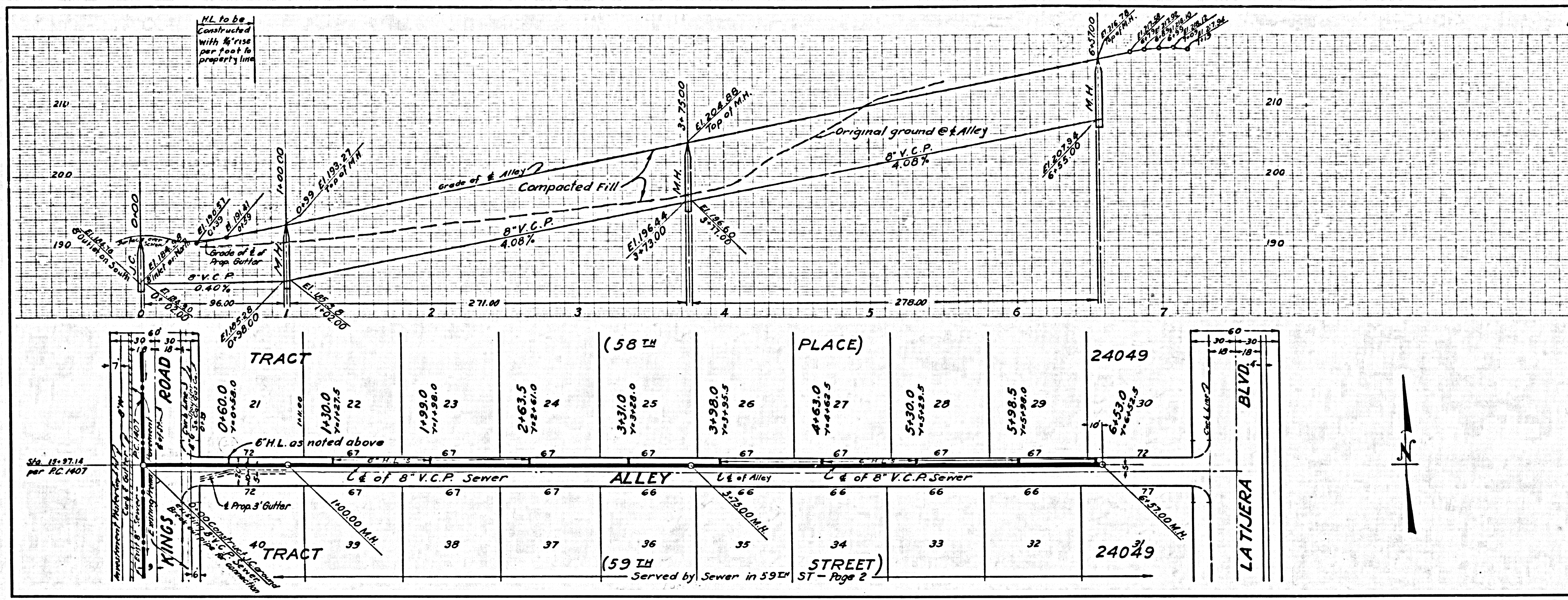
CHECKED BY: *Six Oaks 1-1-58*
OFFICE OF COUNTY ENGINEER, REG. C. E. NO. 3206

NO CHARGE FOR CONNECTIONS
7/27/58 *Linne 3-14*



P.C. 4679 PAGE 2
NO CHARGE FOR CONNECTIONS
DOUBLE SCALE
26,070

26,071

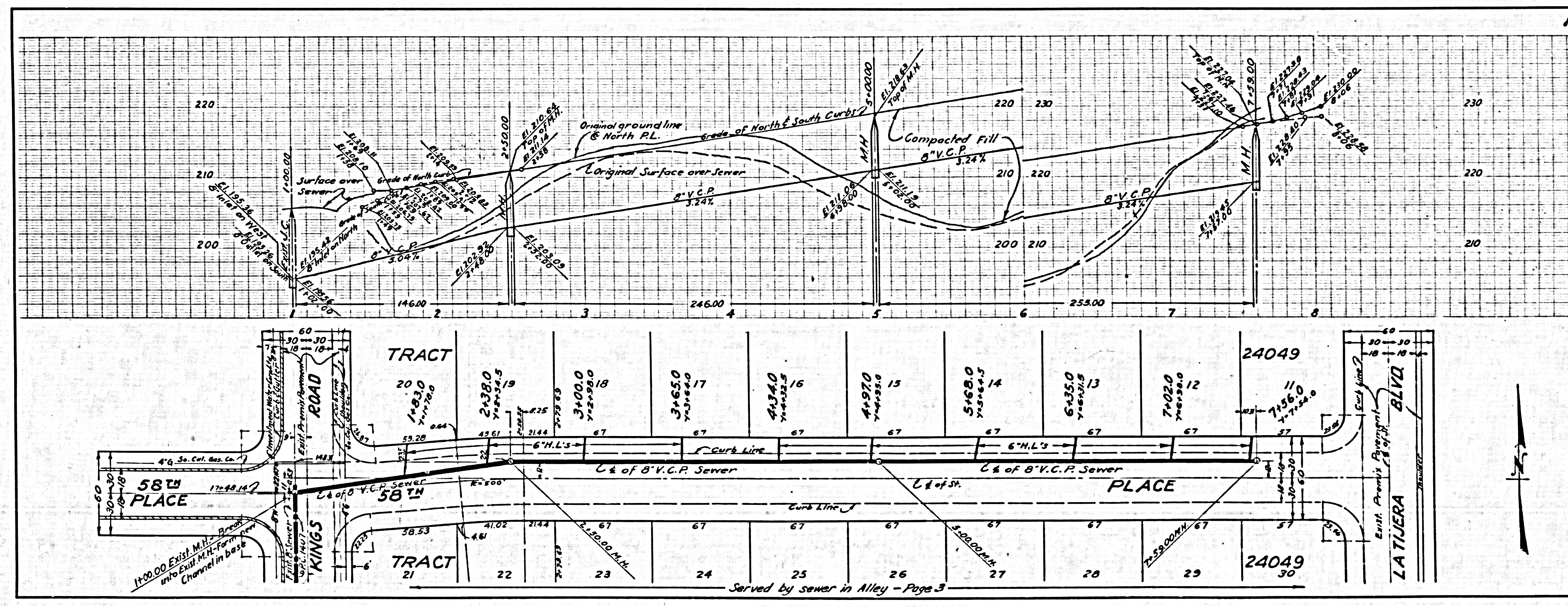


J.C.

Need report on compaction

M.H.

26,072

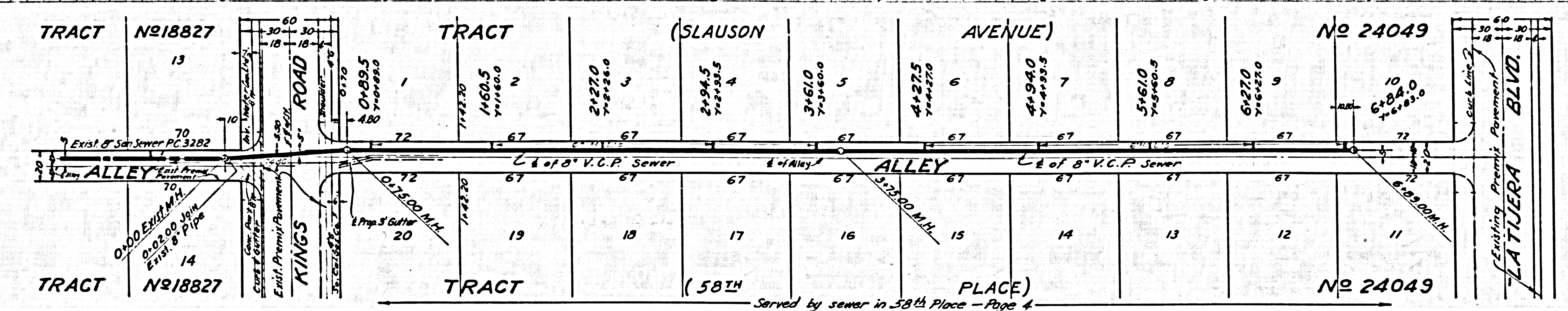
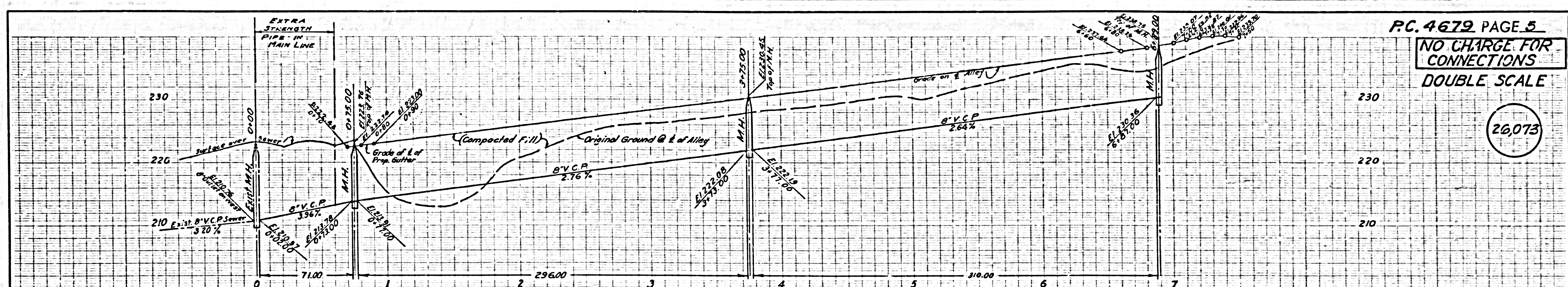


Need compaction report

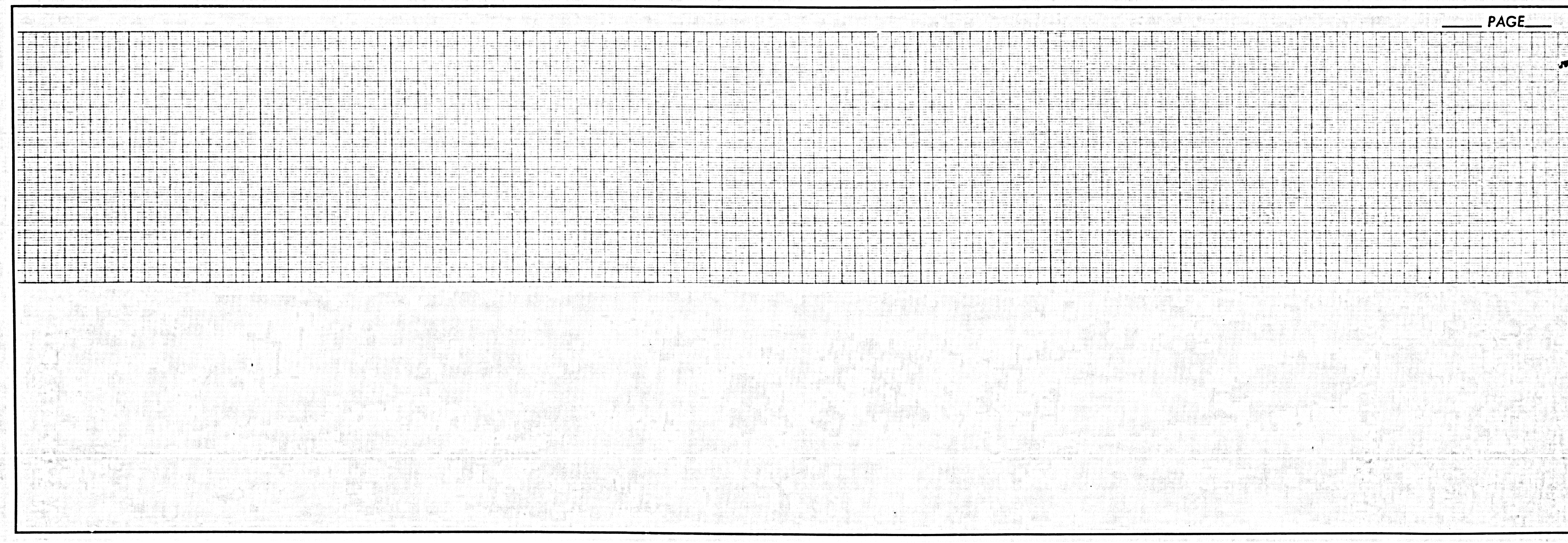
M.H.

PC. 4679 PAGE 5
 NO CHARGE FOR CONNECTIONS
 DOUBLE SCALE

26,073



Handwritten note: *X need connection report*



PAGE