

P.C. 4680

# SAN DIMAS BLDG. DIST. NO. 10

PROFILE ALIGNMENT AND GRADE OF P.C. 4680  
SANITARY SEWERS PAGE 1

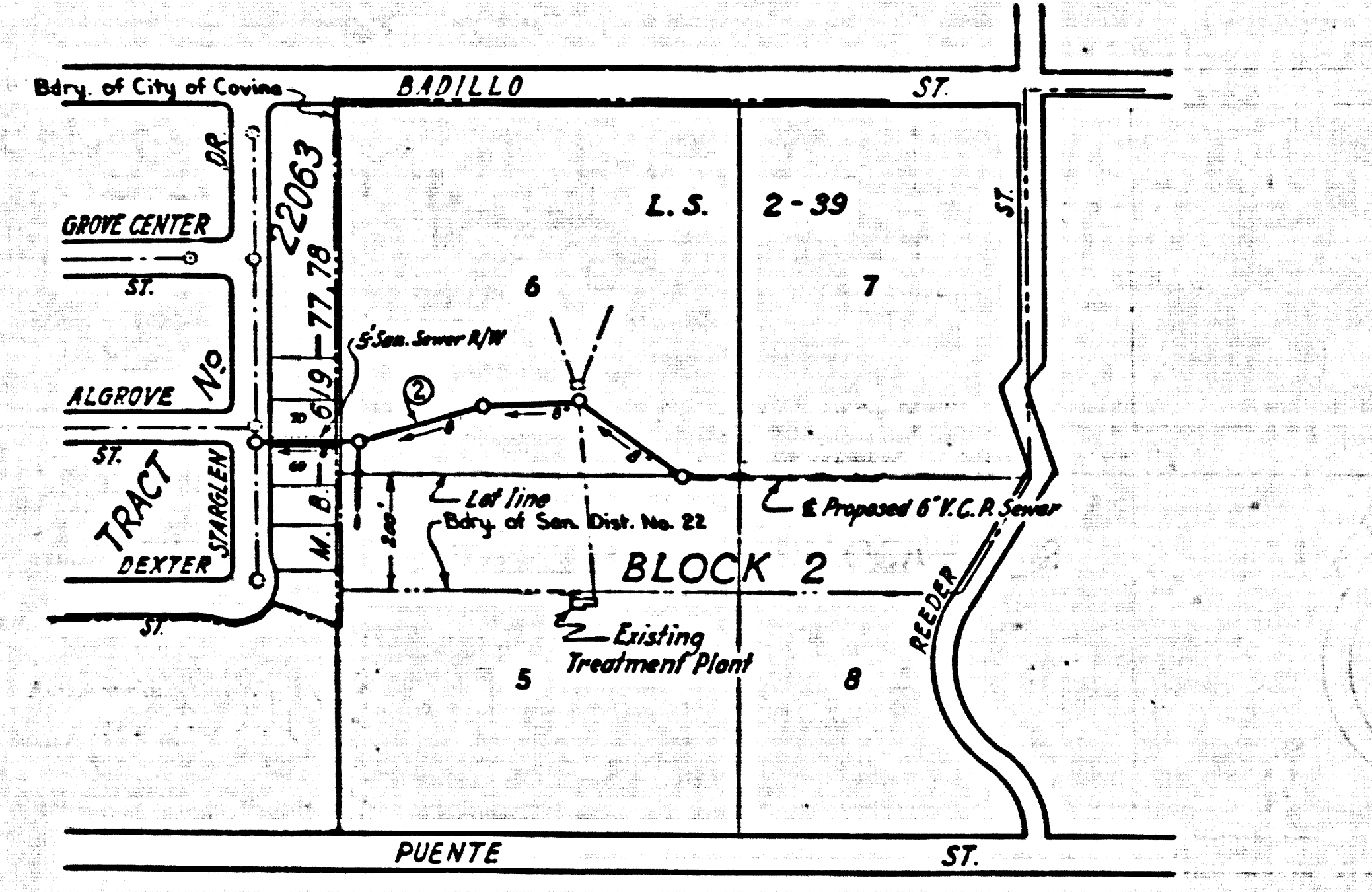
TO BE CONSTRUCTED IN  
STARGLEN DRIVE; TRACT No 22063, (25,578)  
M.B. 619-77,78; & L.S. 2-39

(PRIVATE SEWERS)  
PRIVATE CONTRACT NO. 4680

W.S. 48  
1 SHEET; 2 PAGES

SCALE: VERT. 1"=4' HORIZ. 1"=40'  
JANUARY, 1958  
PREPARED IN THE OFFICES OF  
A. P. COLLINS

By: *A. P. Collins*  
REG. C. E. NO. 1582  
FOR LEGEND SEE PLAN NO. S-A-64



INDEX MAP  
Scale: 1"=300'  
COVINA MASONIC HOME  
P.C. 4680

B.M. A-1 Elev. 666.68  
Chiseled square north side of Circular  
Curb in center of Main Drive  
Per Topo Survey T. M. Walsh December 1956

- NOTES:
- PROVIDE STAKES ON THE PROPERTY LINE OR PROPER LINES PRODUCED AT RIGHT ANGLES TO THE SEWER LINE AT THE CENTER LINE OF EACH MANHOLE.
  - NO REPRESENTATIVE OF THE COUNTY ENGINEER WILL SURVEY OR LAYOUT ANY PORTION OF THE WORK.
  - THE OWNER OR HIS AUTHORIZED REPRESENTATIVE SHALL FURNISH THE COUNTY ENGINEER WITH GRADE SHEETS AND STATION FOR ALL HOUSE LATERALS AND T BRANCHES AND SHALL PROVIDE STAKES FOR THESE AT THEIR PROPER LOCATIONS WITH STATION-ING PLAINLY MARKED. ANY CHANGE IN LOCATION SHALL BE REQUESTED IN WRITING BY THE OWNER OR HIS REPRESENTATIVE.
  - NO REVISIONS SHALL BE MADE IN THESE PLANS WITHOUT THE APPROVAL OF THE COUNTY ENGINEER.
  - USE STANDARD MANHOLE FRAMES AND COVERS, S-A-117, EXCEPT AS NOTED.
  - USE STANDARD STRENGTH PIPE EXCEPT AS NOTED.
  - USE CEMENT MORTAR FOR ALL VITRIFIED CLAY PIPE JOINTS.
  - RESURFACE ALL TRACES WITHIN PAVED AREA TO MEET CITY STREET DEPT., OR CALIF. STATE HIGHWAY DEPT. REQUIREMENTS IN ACCORDANCE WITH PERMITS.
  - ENCASE FOUR FEET OF SEWER AT POINTS OF INTERFERENCE WITH POLES, CASE 3E, S-A-172.
  - MANHOLE LATERALS TO BE CONSTRUCTED TO SPECIFICATIONS ON FILE IN THE OFFICE OF THE COUNTY ENGINEER AND SHALL BE PROSECUTED ONLY IN THE PRESENCE OF THE COUNTY ENGINEER.
  - BEFORE WORK CAN BE STARTED, THE CONTRACTOR MUST OBTAIN A PERMIT TO ENCAUSE IN COUNTY STREETS FROM THE L. A. COUNTY ROAD DEPT., 100 W. 2ND ST. AND MAKE A DEPOSIT WITH THE COUNTY ENGINEER, ROOM 334 MAIN AMERICAN BUILDING, 333 SO. BROADWAY SUFFICIENT TO COVER THE COST OF CONSTRUCTION INSPECTION AND RECORD PLANS.
  - APPROVAL OF THIS PLAN BY THE COUNTY OF LOS ANGELES DOES NOT CONSTITUTE A REPRESENTATION AS TO THE ACCURACY OF THE LOCATION OF OR THE EXISTENCE OR NON-EXISTENCE OF ANY UNDERGROUND UTILITY PIPE, OR STRUCTURE WITHIN THE LIMITS OF THE PROJECT. THIS NOTE APPLIES TO ALL PAGES.
  - IF WORK IS TO BE DONE IN A STATE HIGHWAY, A PERMIT MUST BE OBTAINED FROM THE STATE OF CALIFORNIA, DIVISION OF HIGHWAYS, 120 SOUTH BRIND STREET.

NOTICE:  
THE SEWERS SHOWN HEREON TO BE CONSTRUCTED IN THE CITY OF COVINA SHALL BE IN ACCORDANCE WITH THE CITY OF COVINA STANDARD DESIGN DATED FEBRUARY 14, 1951 AND STANDARD SPECIFICATIONS FOR THE CONSTRUCTION OF SANITARY SEWERS DATED JANUARY, 1951.

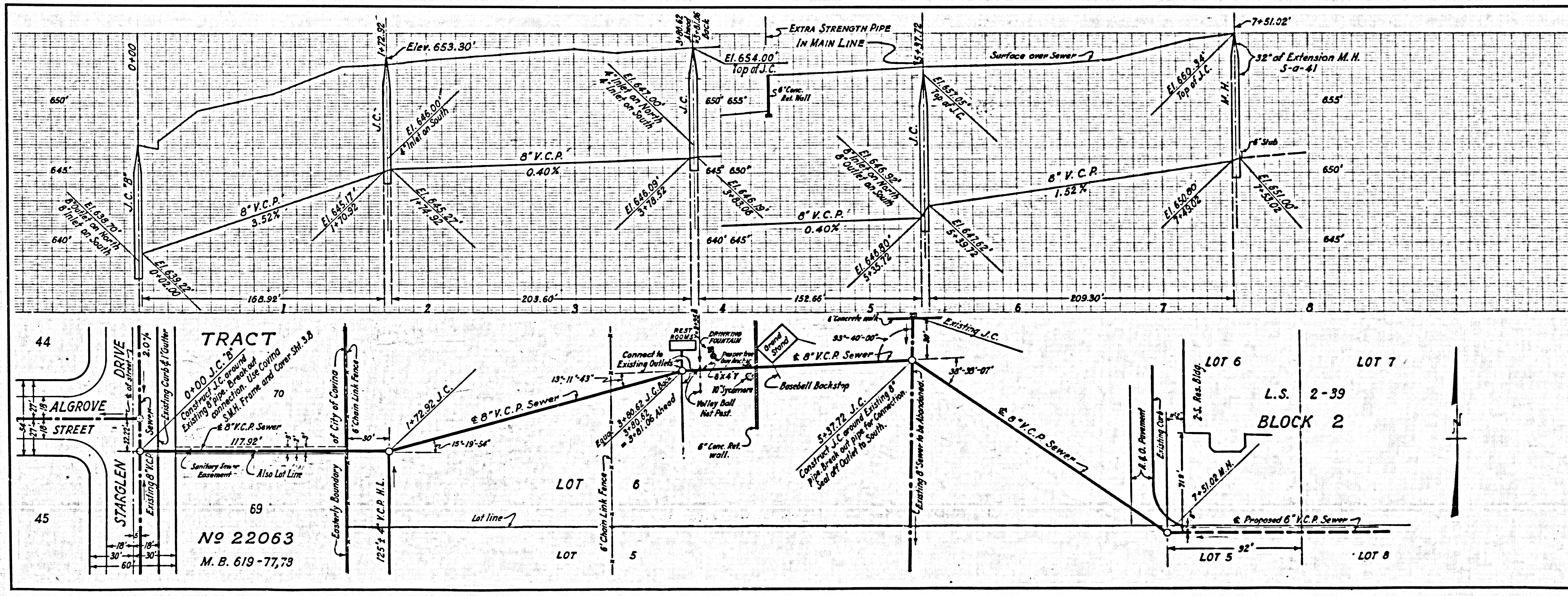
NO CHARGE FOR CONNECTIONS  
*L. Frederick Pack* 2-4-58

APPROVED BY  
INDUSTRIAL WASTE DIVISION  
BY *Bernard J. Vaneley* DATE 1-29-58

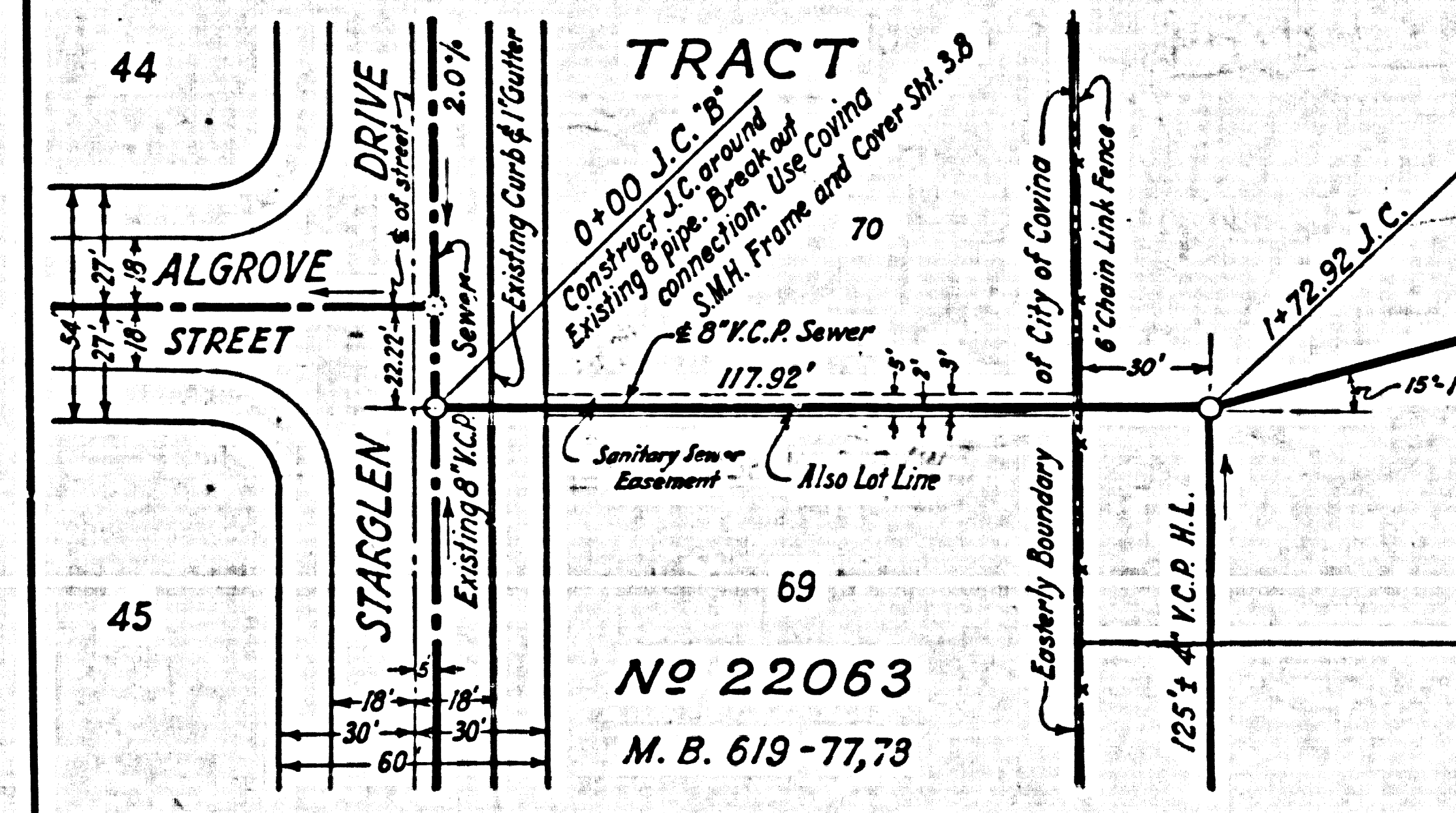
SURVEY BY L. FREDERICK PACK  
COVINA  
12-19-57  
L.B. NO. PG. 1 of 8 REG. E. NO. 7428

NOTES:  
GRADES TO WHICH THIS IMPROVEMENT IS TO BE CONSTRUCTED ARE SHOWN ON PLANS AND PROFILE. GRADE POINTS FOR TOP OF CURB, CENTER LINE OF STREET, OR CENTER LINE OF ALLEY ARE SHOWN BY CIRCLES ON PROFILE. AT ALL POINTS BETWEEN DESIGNATED POINTS THE GRADE SHALL BE ESTABLISHED SO AS TO CONFORM TO A STRAIGHT LINE DRAWN BETWEEN SAID DESIGNATED POINTS.  
ELEVATIONS ARE IN FEET ABOVE U.S.C. & G.S. SEA LEVEL DATUM OF 1929.  
THIS DRAWING AND THE DATA HEREON ARE HEREBY MADE A PART OF THE SPECIFICATIONS.  
WORK SHALL BE CONSTRUCTED ACCORDING TO SPECIFICATIONS ON FILE IN THE OFFICE OF THE COUNTY ENGINEER AND SHALL BE PROSECUTED ONLY IN THE PRESENCE OF THE COUNTY ENGINEER.  
BEFORE WORK CAN BE STARTED, THE CONTRACTOR MUST OBTAIN A PERMIT TO ENCAUSE IN COUNTY STREETS FROM THE L. A. COUNTY ROAD DEPT., 100 W. 2ND ST. AND MAKE A DEPOSIT WITH THE COUNTY ENGINEER, ROOM 334 MAIN AMERICAN BUILDING, 333 SO. BROADWAY SUFFICIENT TO COVER THE COST OF CONSTRUCTION INSPECTION AND RECORD PLANS.  
APPROVAL OF THIS PLAN BY THE COUNTY OF LOS ANGELES DOES NOT CONSTITUTE A REPRESENTATION AS TO THE ACCURACY OF THE LOCATION OF OR THE EXISTENCE OR NON-EXISTENCE OF ANY UNDERGROUND UTILITY PIPE, OR STRUCTURE WITHIN THE LIMITS OF THE PROJECT. THIS NOTE APPLIES TO ALL PAGES.  
IF WORK IS TO BE DONE IN A STATE HIGHWAY, A PERMIT MUST BE OBTAINED FROM THE STATE OF CALIFORNIA, DIVISION OF HIGHWAYS, 120 SOUTH BRIND STREET.

COUNTY OF LOS ANGELES, CALIFORNIA  
APPROVED, JOHN A. LAMBE, COUNTY ENGINEER  
APPROVED, A. M. BAWN, CHIEF ENGINEER  
BY *L. H. Hughes* SANITATION ENGINEER  
BY *A. P. Collins* CHIEF ENGINEER  
CHECKED BY *W. W. White*  
OFFICE OF COUNTY ENGINEER, REG. C. E. NO. 7409  
CITY OF COVINA, CALIFORNIA  
APPROVED BY CITY ENGINEER  
APPROVED *Edward E. Luffe* DATE 2/5/58



P.C. 4680 PAGE 2  
NO CHARGE FOR CONNECTIONS  
(25,579)



Feb 21 1958

P.C. 4680