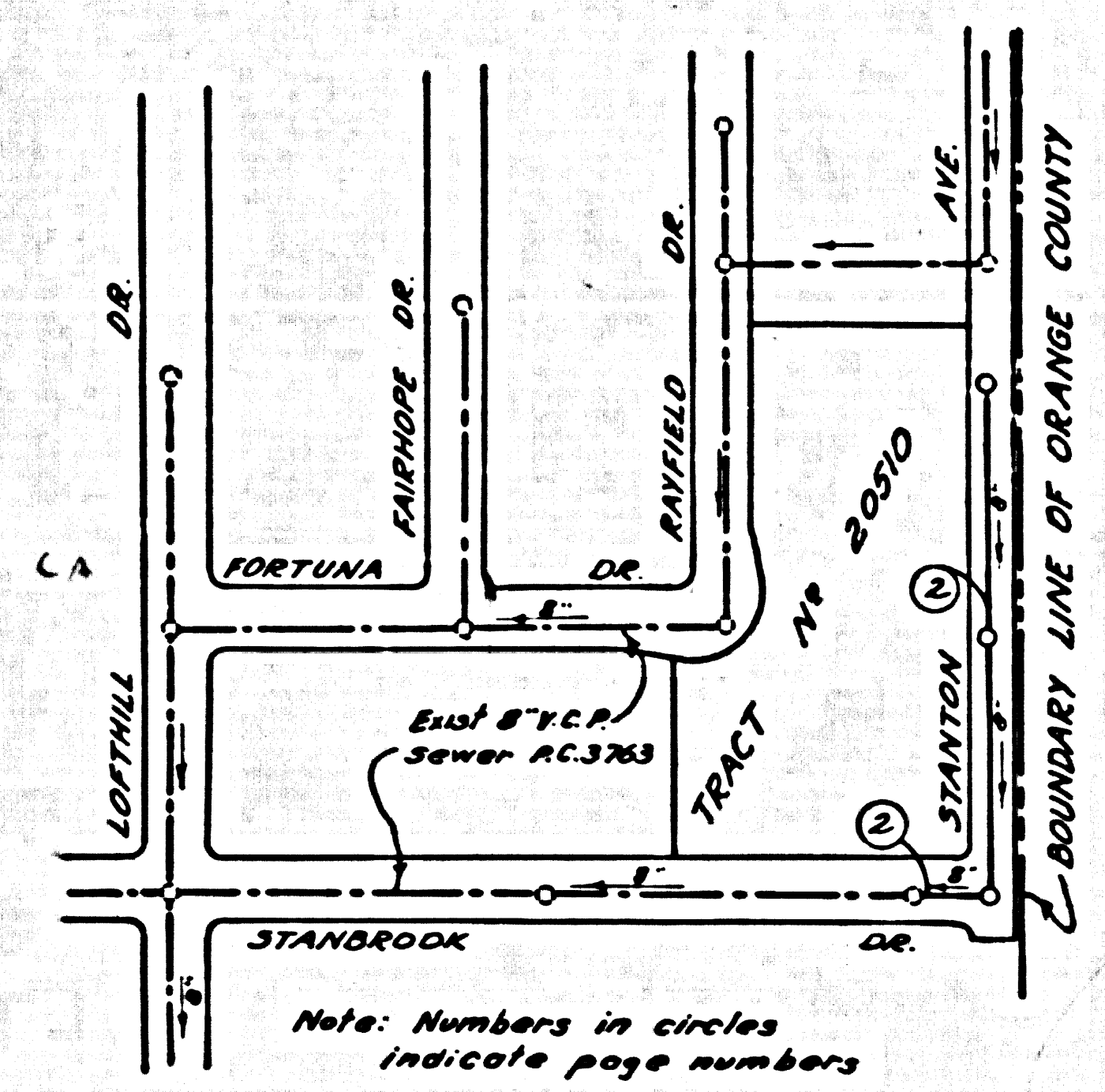


BENCH MARK:
 Stage Rd. & Luitwieler Ave.: A 5th County Surveyor Monument marked 26 1/2 x 2 1/2 set in concrete 16" below the surface in a wall protected by a cast iron cover marked "County Surveyor Monument" at 4 intersection.
 Co. Surv. F.B. 1204-6 1932 Adj. Elev. = 109.862



INDEX MAP
 TRACT NO 20510
 P.C. 4687
 Scale: 1"=200'

NOTE:
 LOTS 1 TO 8 INCLUSIVE ARE SERVED WITH M.S. CONSTRUCTED UNDER PERMITS ISSUED BY BLDG. & SAFETY DIVISION, P.C. 3163
 LOTS 12 TO 14 INCLUSIVE ARE SERVED WITH M.S. CONSTRUCTED UNDER PERMITS ISSUED BY BLDG. & SAFETY DIVISION, P.C. 3163

NORWALK BLDG. DIST. NO. 4.2

- NOTES:**
- PROVIDE STAKES ON THE PROPERTY LINE OR PROPERTY LINES PRODUCED AT RIGHT ANGLES TO THE SEWER LINE AT THE CENTER LINE OF EACH MANHOLE.
 - NO REPRESENTATIVE OF THE COUNTY ENGINEER WILL SURVEY OR LAYOUT ANY PORTION OF THE WORK.
 - THE OWNER OR HIS AUTHORIZED REPRESENTATIVE SHALL FURNISH THE COUNTY ENGINEER WITH GRADE SHEETS AND STATION FOR ALL HOUSE LATERALS AND Y BRANCHES AND SHALL PROVIDE STAKES FOR THEM AT THEIR PROPER LOCATIONS WITH STATIONING PLAINLY MARKED. ANY CHANGE IN LOCATION SHALL BE REQUESTED IN WRITING BY THE OWNER OR HIS REPRESENTATIVE.
 - NO REVISIONS SHALL BE MADE IN THESE PLANS WITHOUT THE APPROVAL OF THE COUNTY ENGINEER.
 - USE STANDARD MANHOLE FRAMES AND COVERS, S.A.-117, EXCEPT AS NOTED.
 - USE STANDARD STRENGTH PIPE EXCEPT AS NOTED.
 - USE CEMENT MORTAR "THENE LINC" OR "SPEED-SEAL" FOR ALL VITRIFIED CLAY PIPE JOINTS, PER S.P.C.S., SECTION 36 (48).
 - RESURFACE ALL TRENCH WITHIN PAVED AREA TO MEET L. A. COUNTY ROAD DEPT., OR CALIF. STATE HIGHWAY DEPT. REQUIREMENTS IN ACCORDANCE WITH PERMITS.
 - ENCASE FOUR FEET OF SEWER AT POINTS OF INTERFERENCE WITH POLES, S.A.-117, CASE III.
 - HOUSE LATERALS TO BE CONSTRUCTED WITH INVERTS AT PROPPY 1 LINE... FEET BELOW CURB GRADE EXCEPT AS NOTED.
 - ALL STRUCTURES SHALL BE BRICK SEWER STRUCTURES, S.A.-104, EXCEPT AS NOTED.
 - FOR ALLOWABLE LEAKAGE TEST USE FORMULA NO. 1 SPEC'S., SEC. 3-6.
 - MANHOLE TOPS IN UNIMPROVED RIGHTS-OF-WAY TO BE 6" ABOVE FINISHED GRADE.
 - THE PRIVATE ENGINEER IS TO FURNISH THE HOUSE LATERAL DEPTH AT THE PROPERTY LINE BELOW THE TOP OF CURB ELEVATION FOR EACH HOUSE LATERAL, ON THE GRADE SHEET.
 - THE CONTRACTOR SHALL SATISFY HIMSELF OF ALL SUBSTRUCTURES AND SHALL BE RESPONSIBLE FOR THEIR LOCATION.

NOTE:
 THE CONTRACTOR SHALL NOTIFY THE CONSTRUCTION AND STORM DRAIN DIVISION BY TELEPHONE, MADISON 9-4747, EX. 362, AT LEAST 24 HOURS BEFORE STARTING ANY WORK UNDER THIS CONTRACT.

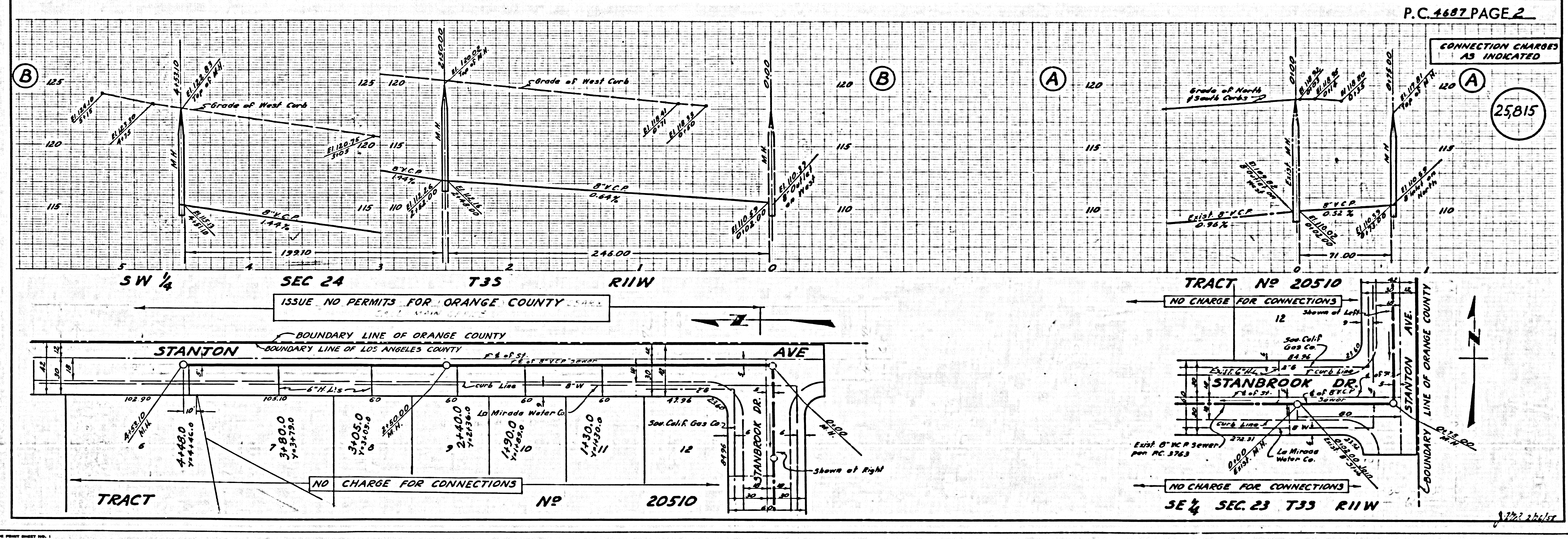
CONNECTION CHARGES AS INDICATED
S. J. ... 2-25-58

PROFILE ALIGNMENT AND GRADE OF **P.C. 4687**
SANITARY SEWERS PAGE **1**
 TO BE CONSTRUCTED IN
TRACT NO 20510 (25,814)

PRIVATE CONTRACT NO. 4687
 W.S. 34
 — 1 SHEETS; — 2 PAGES
 SCALE: HORIZ. 1"=40' VERT. 1"=4'
 JANUARY, 1958
 PREPARED IN THE OFFICES OF
MCINTIRE & QUIROS INC.
 BY *Clay Murray* 1/3/58
 P.E. NO. 3548

NOTES:
 GRADES TO WHICH THIS IMPROVEMENT IS TO BE CONSTRUCTED ARE SHOWN ON PLANS AND PROFILES. GRADE POINTS FOR TOP OF CURB, CENTER LINE OF STREETS, OR CENTER LINE OF ALLEYS ARE SHOWN BY CIRCLES ON PROFILES AT ALL POINTS BETWEEN DESIGNATED POINTS. THE GRADE SHALL BE ESTABLISHED SO AS TO CONFORM TO A STRAIGHT LINE DRAWN BETWEEN SAID DESIGNATED POINTS.
 ELEVATIONS ARE IN FEET ABOVE U.S.C. & G.S. SEA LEVEL DATUM OF 1929.
 THIS DRAWING AND THE DATA HEREON ARE HEREBY MADE A PART OF THE SPECIFICATIONS.
 WORK SHALL BE CONSTRUCTED ACCORDING TO SPECIFICATIONS ON FILE IN THE OFFICE OF THE COUNTY ENGINEER AND SHALL BE PROSECUTED ONLY IN THE PRESENCE OF THE COUNTY ENGINEER.
 BEFORE WORK CAN BE STARTED, THE CONTRACTOR MUST OBTAIN A PERMIT TO EXCAVATE IN COUNTY STREETS FROM THE L. A. COUNTY ROAD DEPT., 108 W. 2ND ST. AND MAKE A DEPOSIT WITH THE COUNTY ENGINEER, ROOM 324 AMERICAN BLDG. 335 SO. BROADWAY (SUPPORT) TO COVER THE COST OF CONSTRUCTION INSPECTION AND RECORD PLANS.
 APPROVAL OF THIS PLAN BY THE COUNTY OF LOS ANGELES DOES NOT CONSTITUTE A REPRESENTATION AS TO THE ACCURACY OF THE LOCATION OF OR THE EXISTENCE OR NON-EXISTENCE OF ANY UNDERGROUND UTILITY PIPE, OR STRUCTURE WITHIN THE LIMITS OF THIS PROJECT. THIS NOTE APPLIES TO ALL PAGES.
 IF WORK IS TO BE DONE IN A STATE HIGHWAY, A PERMIT MUST BE OBTAINED FROM THE STATE OF CALIFORNIA, DIVISION OF HIGHWAYS, 126 SOUTH SPRING STREET.

COUNTY OF LOS ANGELES, CALIFORNIA
 APPROVED, JOHN A. LAMBIE, COUNTY ENGINEER
 APPROVED, A. M. BAWN, CHIEF ENGINEER
 BY *S. J. ...* SANITATION ENGINEER
 BY *A. M. Bawn* OFFICE ENGINEER
 CHECKED BY *S. J. ...*
 OFFICE OF COUNTY ENGINEER, 800 C. E. NO. 3406
 RECOMMENDED BY *John E. ...* 2-26-58
 L.A. REGISTERED REGIONAL ENGINEER, REG. C.E. NO. 2871



P.C. 4687 PAGE 2

CONNECTION CHARGES AS INDICATED

(25,815)

ISSUE NO. PERMITS FOR ORANGE COUNTY

NO CHARGE FOR CONNECTIONS

NO CHARGE FOR CONNECTIONS

NO CHARGE FOR CONNECTIONS

S. J. ...