

INDEX MAP
SCALE: 1" = 1000'
P.C. 4689

BENCHMARK NO. 11-91
Pomona Blvd. & Valley Blvd., 8.3' W. of the W. edge of Pomona Blvd. & 8.3' E. of the E. edge of Valley Blvd. in a wall protected by a Cast Iron Cover marked "County Surveyor Monument," of Std. County Surveyor map set in conc. 10' below the surface marked "B.M. 11-91 1952 R.E. 63 E1.684.191"

NO CHARGE FOR CONNECTION
T. McQuinn 3-31-59

SAN DIMAS BLDG. DIST. NO. 10

- NOTE:
PROVIDE STAKES ON THE PROPERTY LINE OR PROPERTY LINES PRODUCED AT RIGHT ANGLES TO THE SEWER LINE AT THE CENTER LINE OF EACH MANHOLE.
NO REPRESENTATIVE OF THE COUNTY ENGINEER WILL SURVEY OR LAYOUT ANY PORTION OF THE WORK.
THE OWNER OR HIS AUTHORIZED REPRESENTATIVE SHALL FURNISH THE COUNTY ENGINEER WITH GRADE SHEETS AND STATIONING FOR ALL HOUSE LATERALS AND BRANCHES AND SHALL PROVIDE STAKES FOR THEM AT THEIR PROPER LOCATIONS WITH STATIONING PLAINLY MARKED. ANY CHANGE IN LOCATION SHALL BE REQUESTED IN WRITING BY THE OWNER OR HIS REPRESENTATIVE. NO REVISIONS SHALL BE MADE IN THESE PLANS WITHOUT THE APPROVAL OF THE COUNTY ENGINEER.
- USE STANDARD MANHOLE FRAMES AND COVERS, S-A-117, 25.30" AS NOTED.
 - USE STANDARD STRENGTH PIPE EXCEPT AS NOTED.
 - USE CEMENT MORTAR, "WEDGE-LOCK" OR "SPEED-SEAL" FOR ALL V.C.P. JOINTS PER SPEC'S, SEC'S 36 & 42.
 - RESURFACE ALL THINGS WITHIN PAVED AREA TO MEET L.A. COUNTY ROAD DEPT., OR CALIF. STATE HIGHWAY DEPT. REQUIREMENTS IN ACCORDANCE WITH PERMITS.
 - INDICATE FOUR FEET OF SEWER AT POINTS OF INTERFERENCE WITH POLES, SA 172, III.
 - INDICATE MANHOLE TO BE CONSTRUCTED WITH DIMENSIONS AS SHOWN ON THIS PLAN.
 - ALL STRUCTURES SHALL BE BRICK SEWER STRUCTURES, S-A-104, EXCEPT AS NOTED.
 - FOR ALLOWABLE LEAKAGE TEST USE FORMULA NO. 1, SPEC'S, SEC 84.
 - MANHOLE TOPS IN UNIMPROVED RIGHTS-OF-WAY TO BE 6" ABOVE FINISHED GRADE.
 - MANHOLES CONSTRUCTED IN RIGHT OF WAY TO BE CONSTRUCTED WITH 2 FEET OF MANHOLE EXTENSION PER S-A-41.
 - THE CONTRACTOR SHALL NOTIFY THE CONSTRUCTION AND STORM DRAIN DIVISION BY TELEPHONE, HARRISON 5-4747, EXTENSION 365, AT LEAST 24 HOURS BEFORE STARTING ANY WORK UNDER THIS CONTRACT.
 - THE CONTRACTOR SHALL NOTIFY THE COUNTY SANITATION DIVISION BY TELEPHONE, BUNNING 61581 AT LEAST 24 HOURS BEFORE STARTING ANY WORK ON THE SANITATION STRUCTURES.

STANDARD SPECIFICATIONS DATED APRIL 1953 APPLY IN THE CONSTRUCTION OF THIS PROJECT.

PROFILE ALIGNMENT AND GRADE OF
SANITARY SEWERS
TO BE CONSTRUCTED IN
**BREA CANYON ROAD AND
SANITARY SEWER RIGHTS OF WAY**

PRIVATE CONTRACT NO. 4689

W.S. 39
6 SHEETS, 11 PAGES

SCALE: VERT. 1" = 4' JULY, 1958
PREPARED IN THE OFFICES OF

QUINTON ENGINEERS, LIMITED

By: *H. W. Lomax*
REG. C. E. NO. 6322

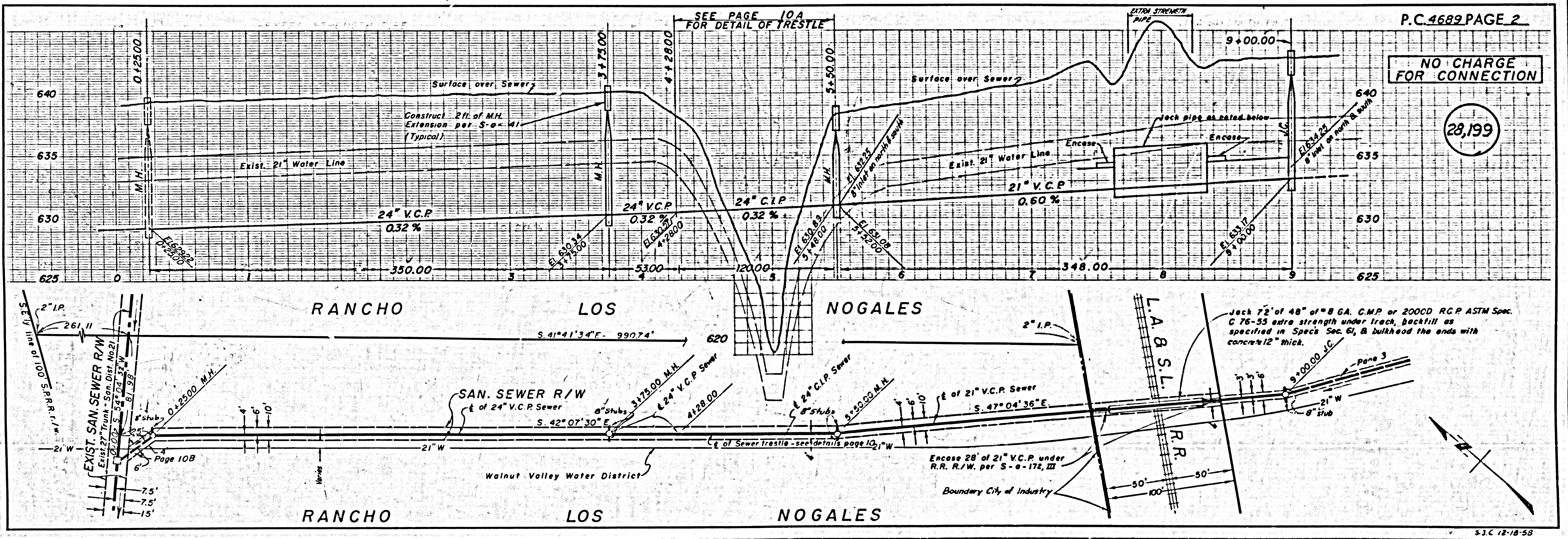
FOR LEGEND SEE PLAN NO. S-A-64

28,198

NOTE:
GRADE TO WHICH THIS IMPROVEMENT IS TO BE CONSTRUCTED ARE SHOWN ON PLANS AND PROFILES. GRADE POINTS FOR TOP OF CURBS, CENTER LINE OF STREETS, OR CENTER LINE OF ALLEYS ARE SHOWN BY CIRCLES ON PROFILES. AT ALL POINTS BETWEEN INDICATED POINTS THE GRADE SHALL BE ESTABLISHED SO AS TO CONFORM TO A STRAIGHT LINE DRAWN BETWEEN SAID DESIGNATED POINTS.
ELEVATIONS ARE IN FEET ABOVE U.S.C. & G.S. SEA LEVEL, DATUM OF 1929.
THIS DRAWING AND THE DATA HEREON ARE HEREBY MADE A PART OF THE SPECIFICATIONS.
WORK SHALL BE CONSTRUCTED ACCORDING TO SPECIFICATIONS ON FILE IN THE OFFICE OF THE COUNTY ENGINEER AND SHALL BE PROSECUTED ONLY IN THE PRESENCE OF THE COUNTY ENGINEER.
BEFORE WORK CAN BE STARTED, THE CONTRACTOR MUST OBTAIN A PERMIT TO EXCAVATE IN COUNTY SEWERS FROM THE L.A. COUNTY ROAD DEPT., DISTRICT #1, AND MAKE A DEPOSIT WITH THE COUNTY ENGINEER, ROOM 234 SAN AMERICAN BUILDING, 225 SO BROADWAY, SUFFICIENT TO COVER THE COST OF CONSTRUCTION INSPECTION AND RECORD PLANS.
APPROVAL OF THIS PLAN BY THE COUNTY OF LOS ANGELES DOES NOT CONSTITUTE A REPRESENTATION AS TO THE ACCURACY OF THE LOCATION OR OF THE EXISTENCE OR NON-EXISTENCE OF ANY UNDERGROUND UTILITY PIPE, OR STRUCTURE WITHIN THE LIMITS OF THIS PROJECT. THIS NOTE APPLIES TO ALL PAGES.
IF WORK IS TO BE DONE IN A STATE HIGHWAY, A PERMIT MUST BE OBTAINED FROM THE STATE OF CALIFORNIA, DIVISION OF HIGHWAYS, 120 SOUTH BRIDGE STREET.

COUNTY OF LOS ANGELES, CALIFORNIA

APPROVED, JOHN A. LAMBE, COUNTY ENGINEER. APPROVED, C.R. CONNOR, CHIEF ENGINEER.
CITY ENGINEER, CITY OF INDUSTRY. REG. No. 21
By: *C. H. Hughes* By: *J. C. Williams*
SANITATION ENGINEER OFFICE ENGINEER
CHECKED BY: *W. W. Wicks* 6-9-59
OFFICE OF COUNTY ENGINEER, REG. C. E. NO. 9482



NO CHARGE FOR CONNECTION

28,199

P.C. 4689 PAGE 2

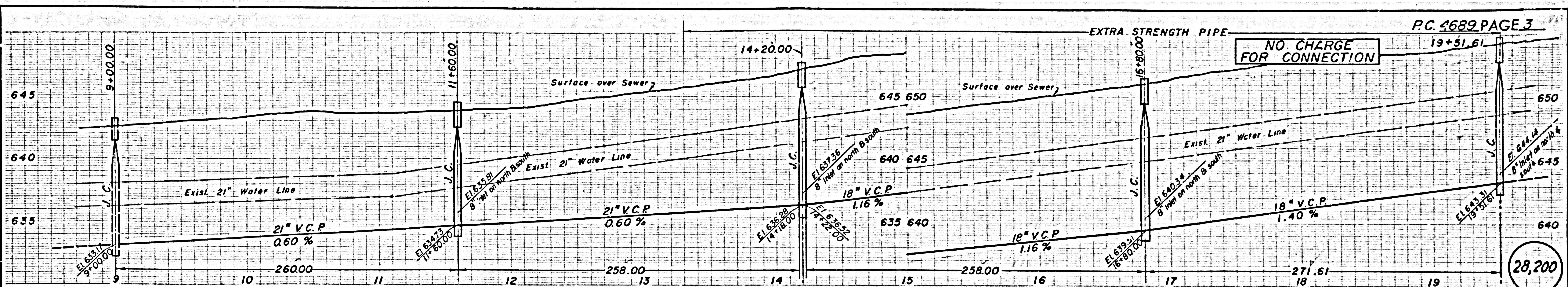
Jack 72' of 48" of 8 GA. C.M.P. or 2000D R.C.P. ASTM Spec. C 76-55 extra strength under track, backfill as specified in Spec's Sec. 61, & bulkhead the ends with concrete 12" thick.

Encase 28' of 21" V.C.P. under R.R. R./W. per S-A-172, III

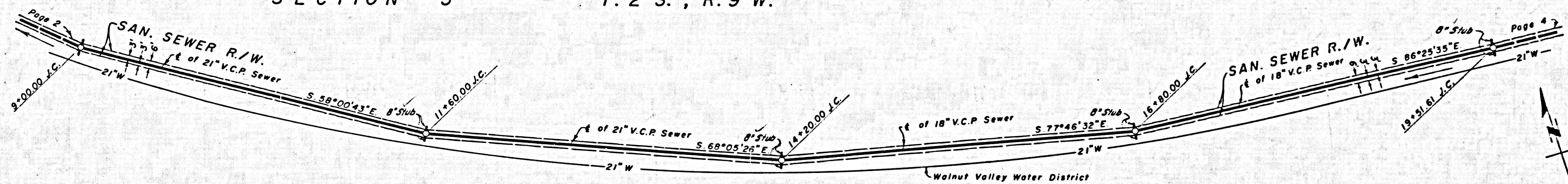
Boundary City of Industry

S.I.C. 12-18-58

P.C. 4689

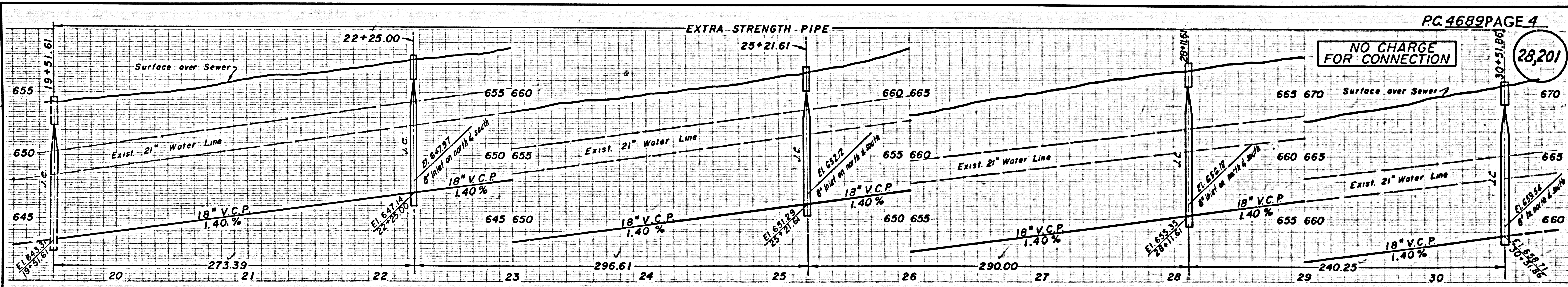


SECTION 3 T. 2 S., R. 9 W.

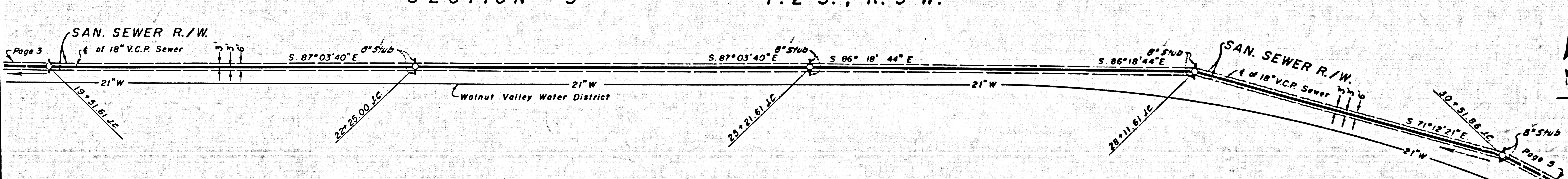


SECTION 3 T. 2 S., R. 9 W.

31.C. 12-18-68

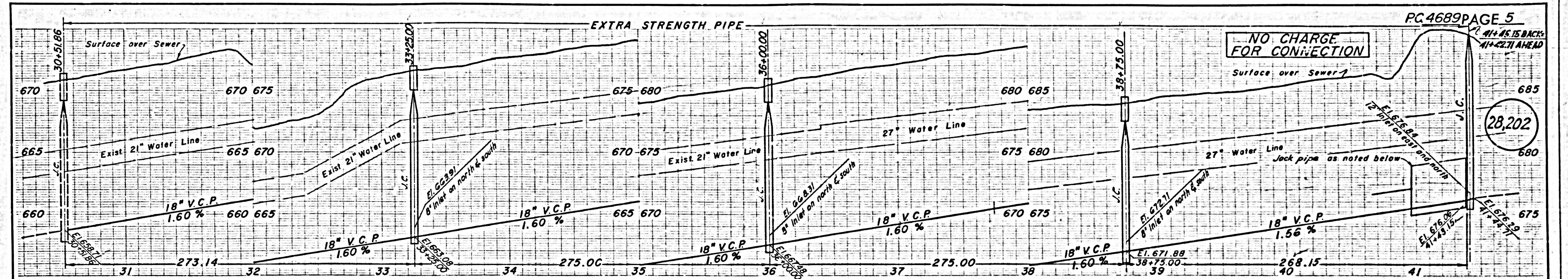


SECTION 3 T. 2 S., R. 9 W.

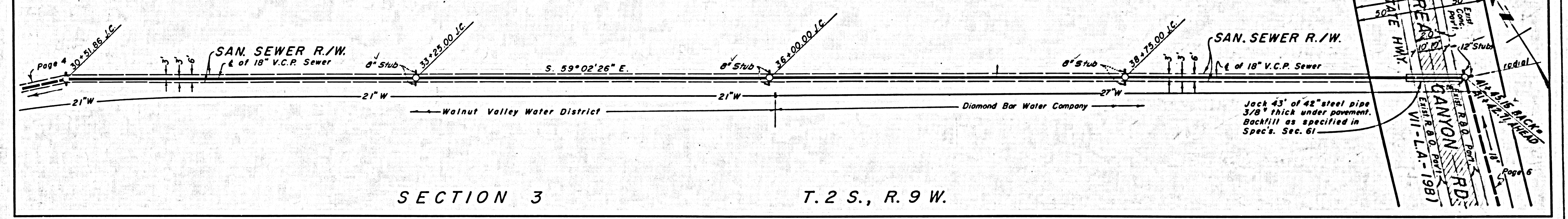


SECTION 3 T. 2 S., R. 9 W.

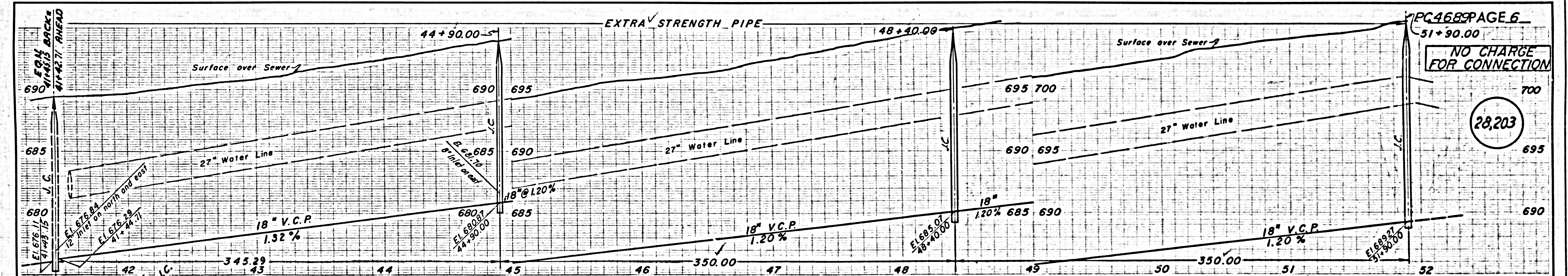
31.C. 12-18-58



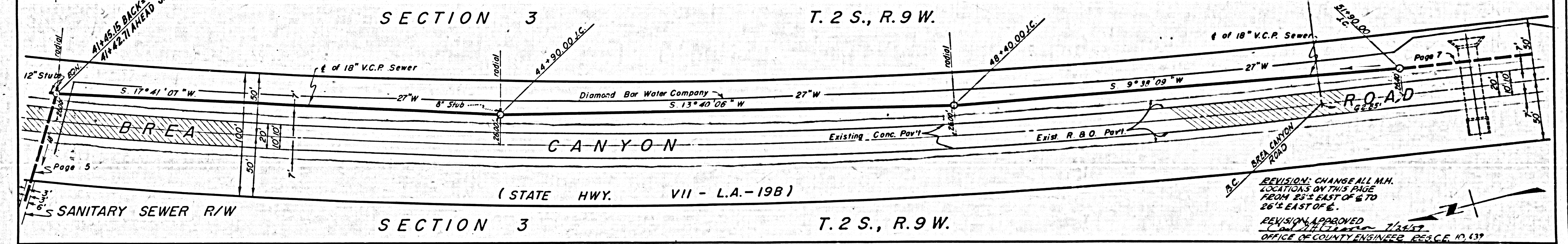
SECTION 3 T.2 S., R.9 W.



SECTION 3 T.2 S., R.9 W.



SECTION 3 T.2 S., R.9 W.

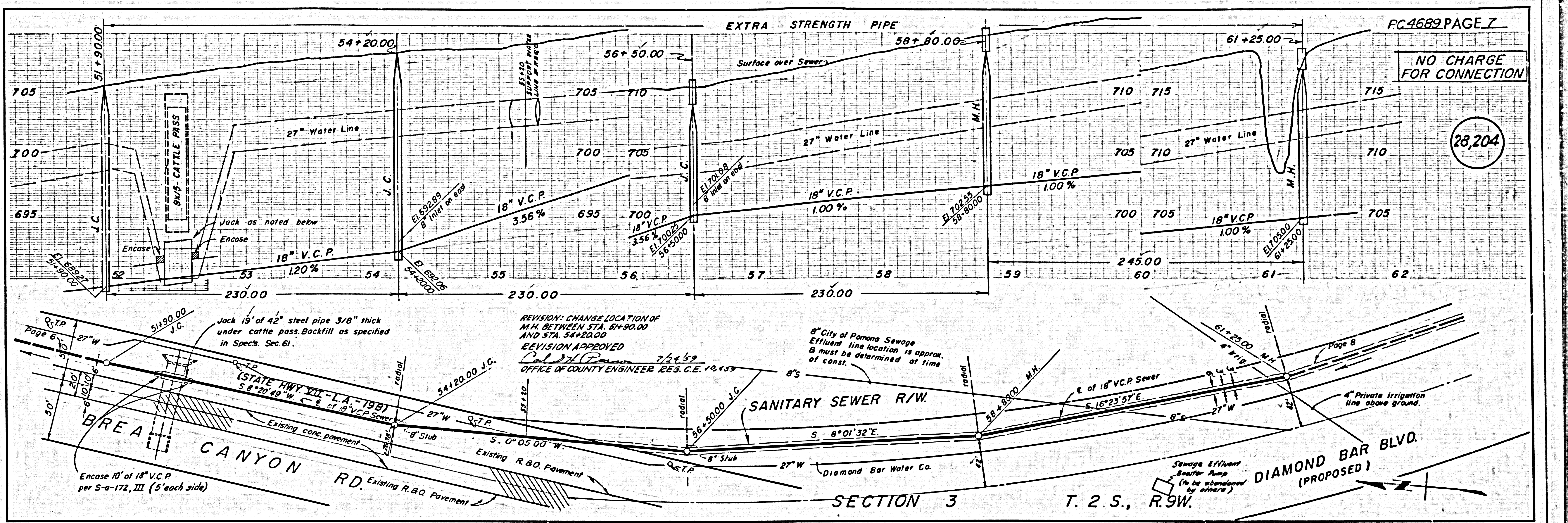


SECTION 3 T.2 S., R.9 W.

REVISION: CHANGE ALL M.H. LOCATIONS ON THIS PAGE FROM 25' EAST OF 6 TO 26' EAST OF 6.
 REVISION APPROVED
 OFFICE OF COUNTY ENGINEER, P.C.S.C.E. 10,437

28,202

28,203



NO CHARGE FOR CONNECTION

28,204

REVISION: CHANGE LOCATION OF M.H. BETWEEN STA. 51+90.00 AND STA. 54+20.00
 REVISION APPROVED
 7/24/59
 OFFICE OF COUNTY ENGINEER REG. C.E. 10,433

8" City of Pomona Sewage Effluent line location is approx. & must be determined at time of const.

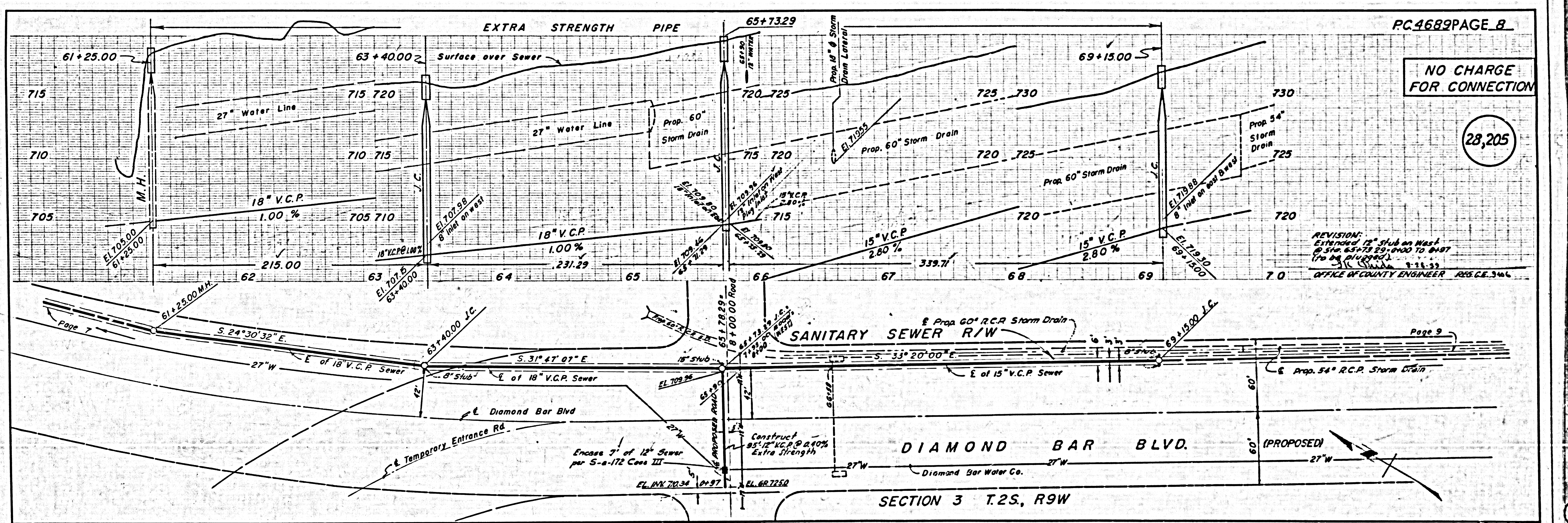
Jack 19' of 42" steel pipe 3/8" thick under cattle pass. Backfill as specified in Spec's Sec. 61.

Encase 10' of 18" V.C.P. per S-a-172, III (5' each side)

Encase 7' of 12" Sewer per S-a-172 Case III

Construct 82" V.C.P. @ 2.10% Extra Strength

REVISION: EXTENDED 12" stub on West of Sta. 65+73.29, 6900 TO 6907 (Per S-a-172 Case III)
 7-15-59
 OFFICE OF COUNTY ENGINEER REG. C.E. 346

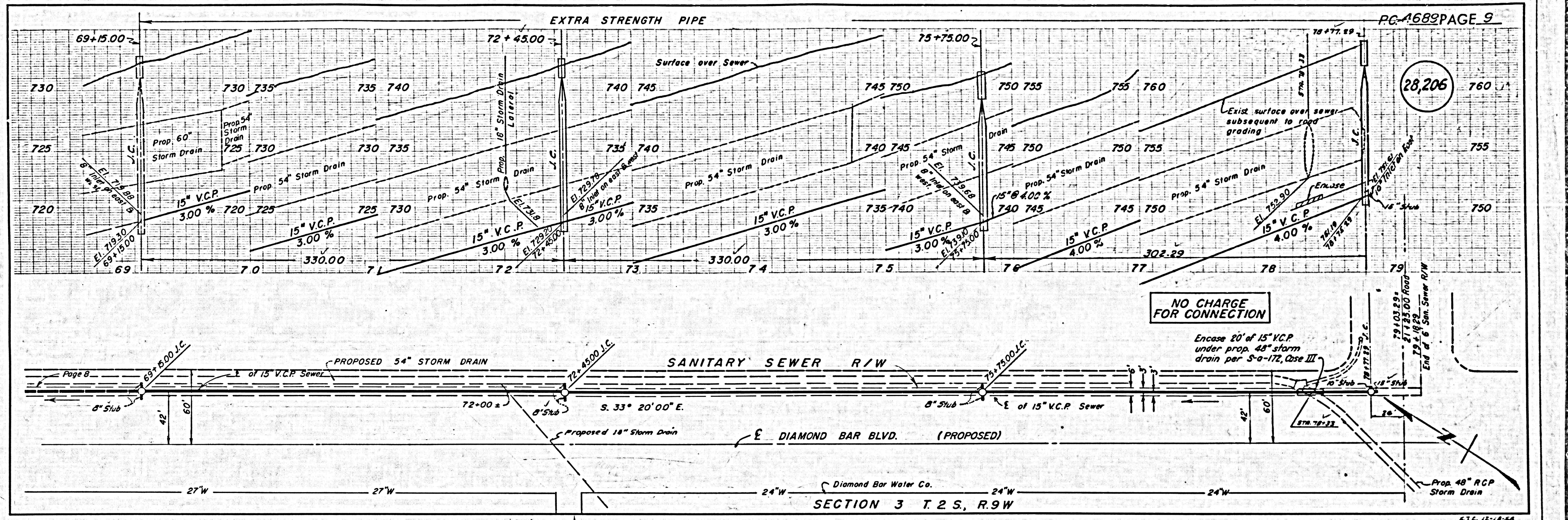


NO CHARGE FOR CONNECTION

28,205

REVISION: EXTENDED 12" stub on West of Sta. 65+73.29, 6900 TO 6907 (Per S-a-172 Case III)
 7-15-59
 OFFICE OF COUNTY ENGINEER REG. C.E. 346

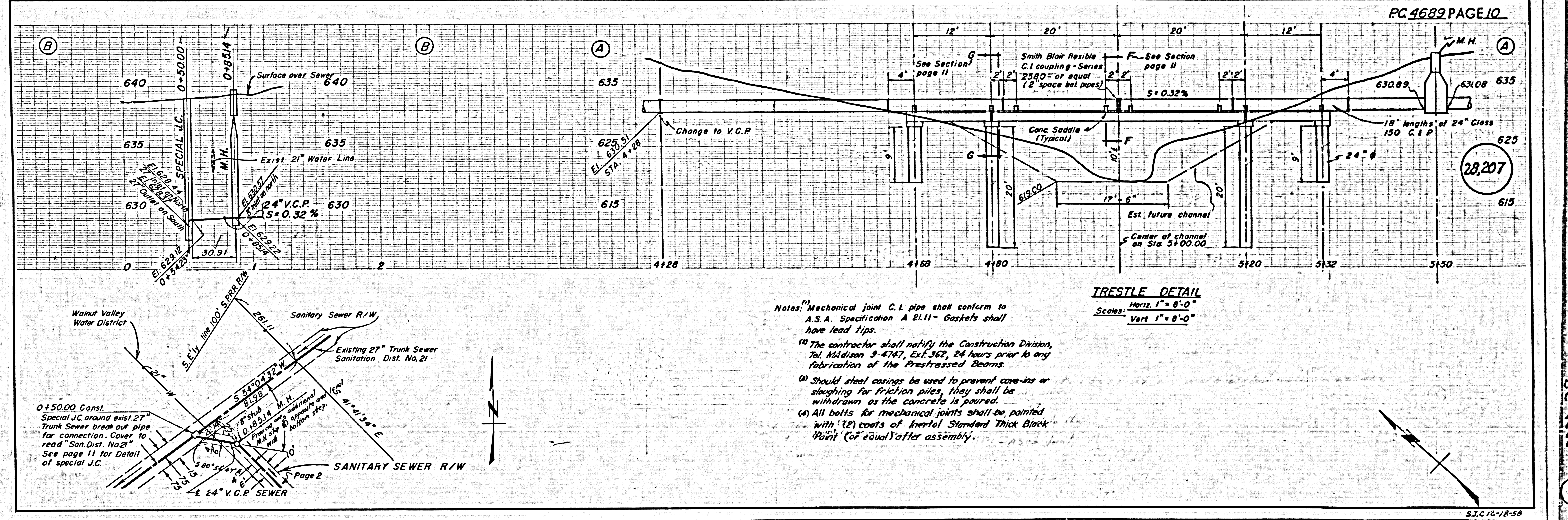
REVISION: EXTENDED 12" stub on West of Sta. 65+73.29, 6900 TO 6907 (Per S-a-172 Case III)
 7-15-59
 OFFICE OF COUNTY ENGINEER REG. C.E. 346



28,206

NO CHARGE FOR CONNECTION

SECTION 3 T. 2 S., R. 9 W.



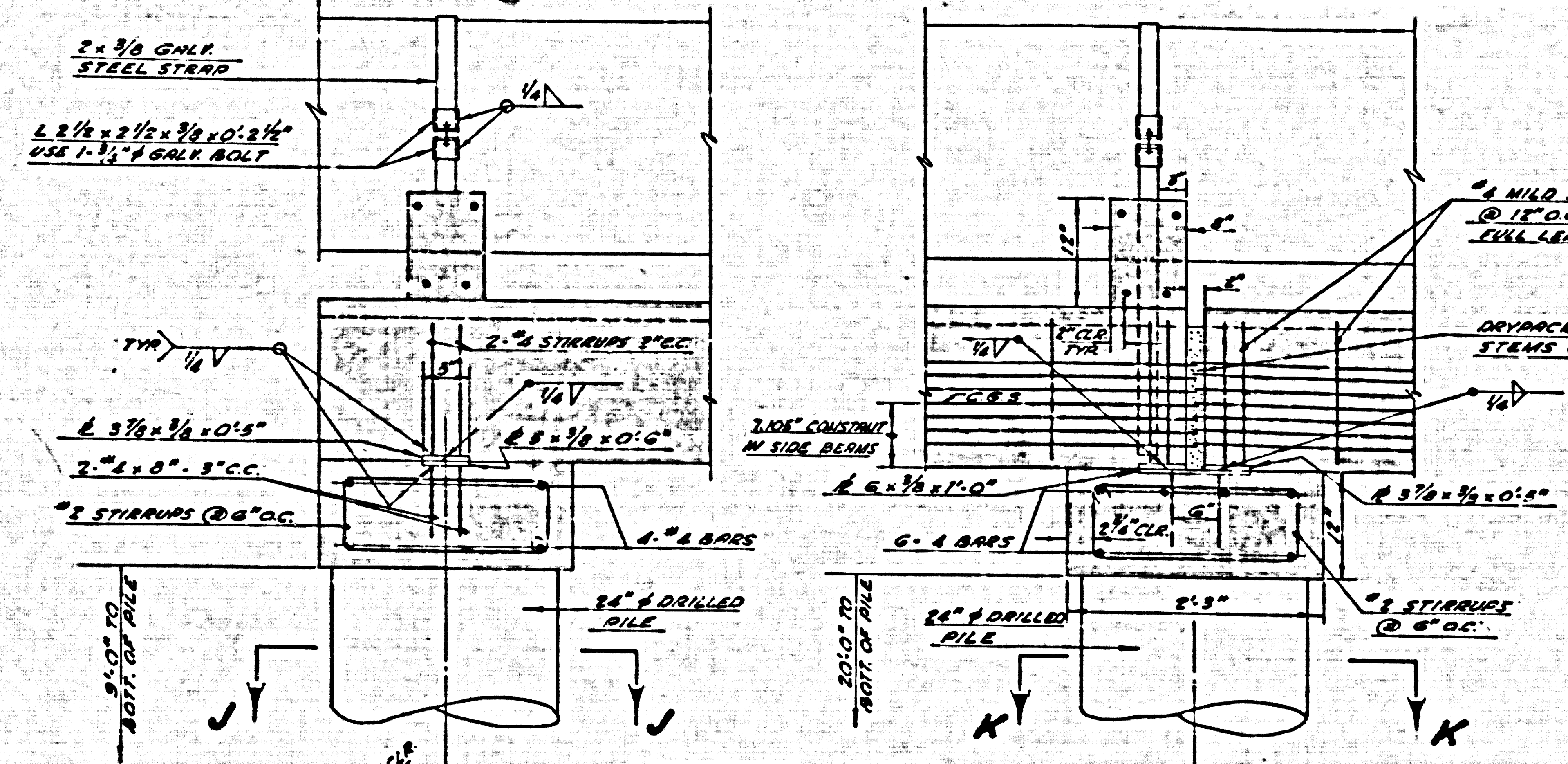
28,207

TRESTLE DETAIL

Scale: Horiz 1" = 8'-0"
Vert 1" = 8'-0"

- Notes:
- (1) Mechanical joint C.I. pipe shall conform to A.S.A. Specification A 21.11 - Gaskets shall have lead tips.
 - (2) The contractor shall notify the Construction Division, Tel. Madison 9-4747, Ext. 362, 24 hours prior to any fabrication of the Prestressed Beams.
 - (3) Should steel casings be used to prevent core-ins or sloughing for friction piles, they shall be withdrawn as the concrete is poured.
 - (4) All bolts for mechanical joints shall be painted with (2) coats of Inertol Standard Thick Black Paint (or equal) after assembly.

0+50.00 Const.
Special J.C. around exist 27" Trunk Sewer break out pipe for connection. Cover to read "San. Dist. No. 21". See page 11 for Detail of special J.C.

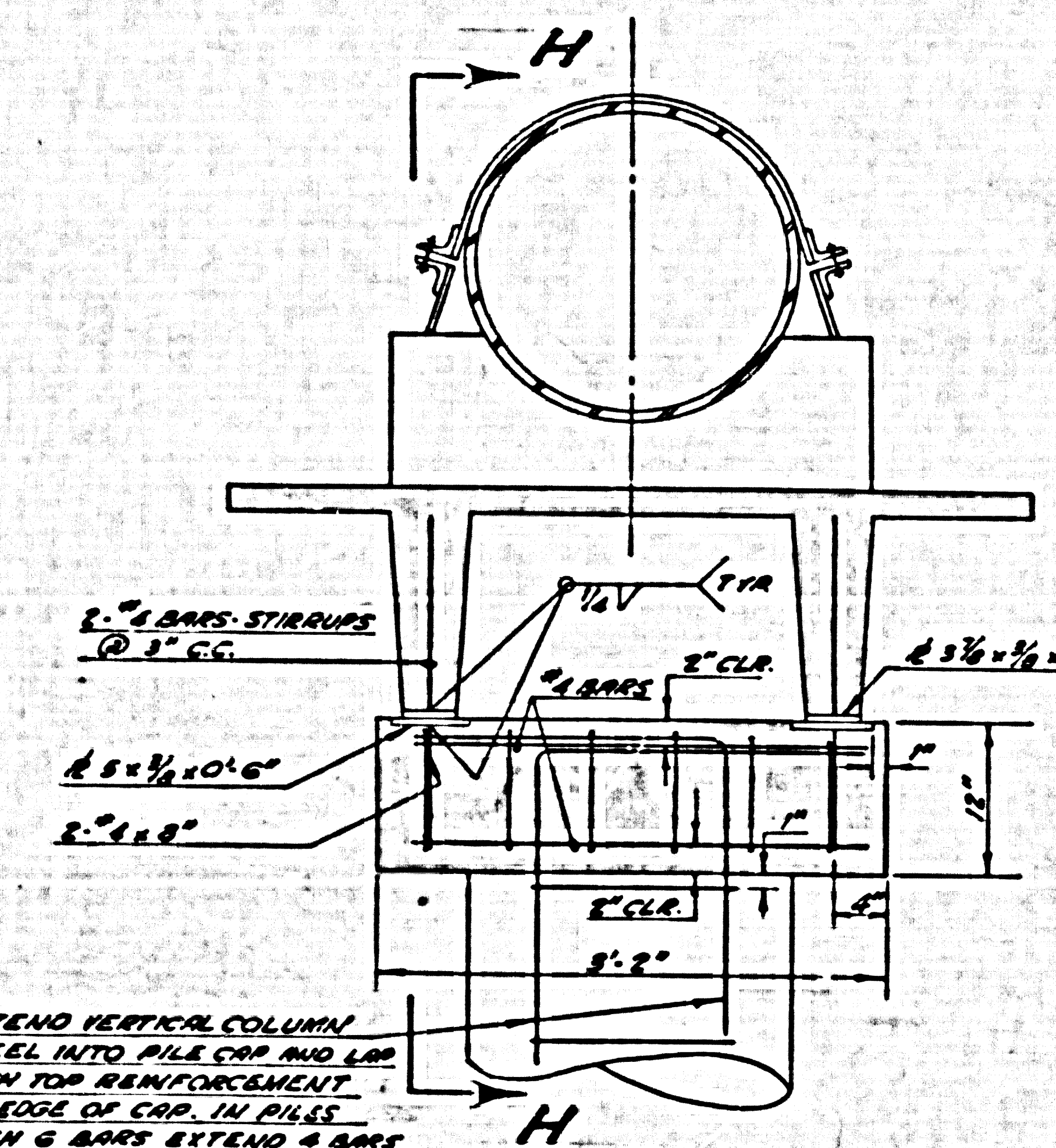


SECT. H-H
SCALE: 1"=1'-0"

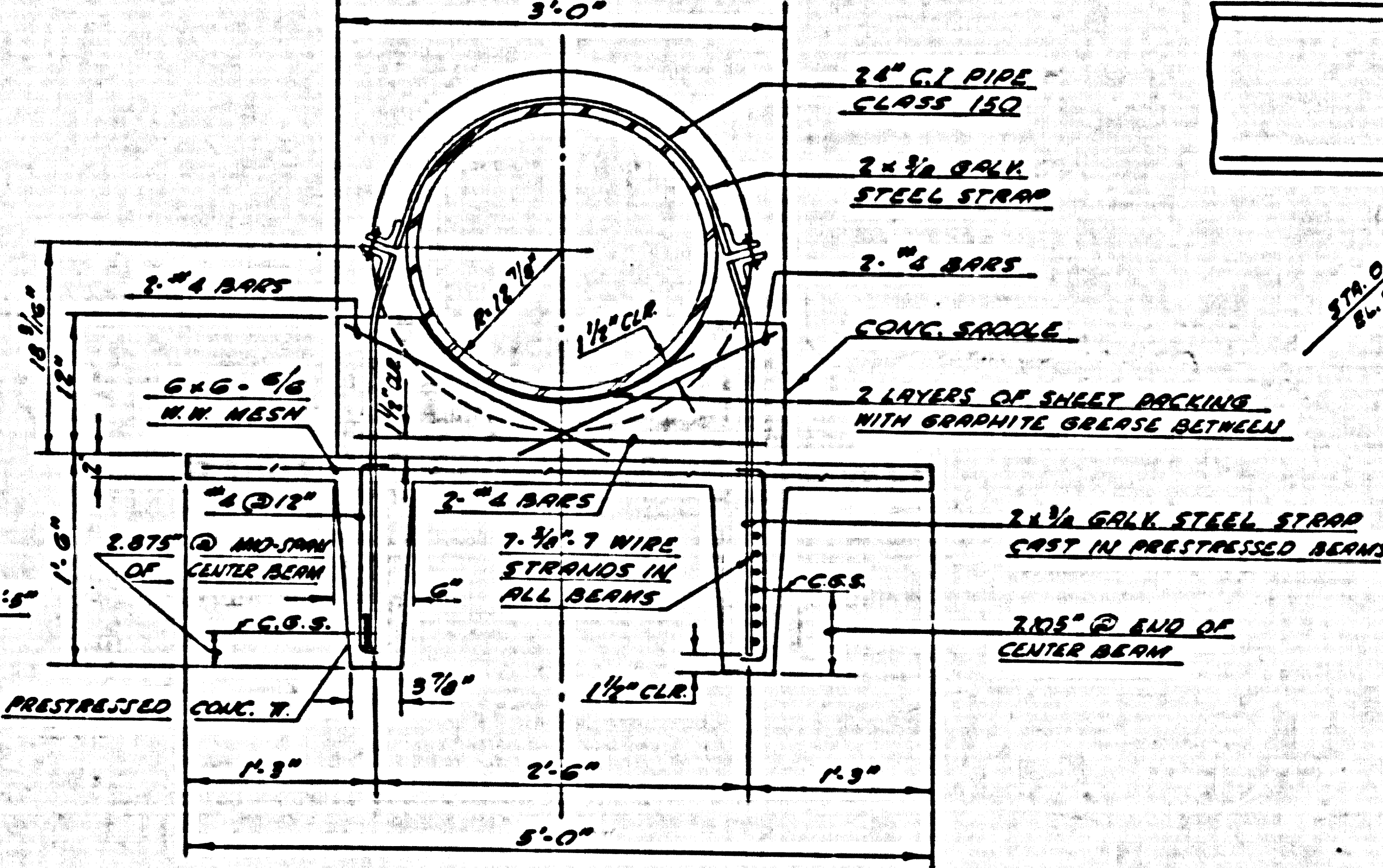
SECT. K-K
SCALE: 1"=1'-0"

SECT. J-J
SCALE: 1"=1'-0"

SECT. K-K
SCALE: 1"=1'-0"

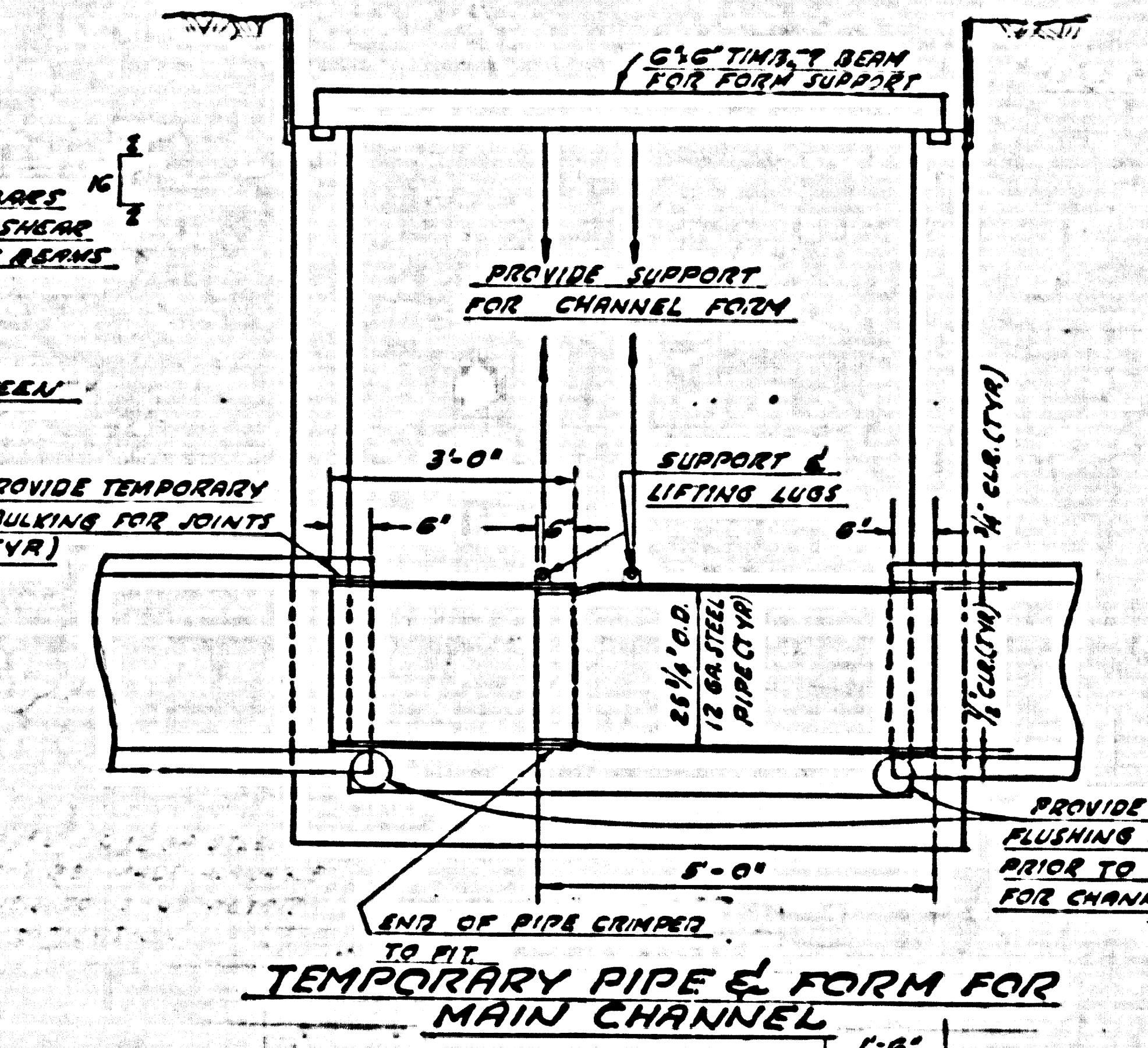


DOUBLE T BEAM & PILE SUPPORT
SECT. G-G
SCALE: 1"=1'-0"

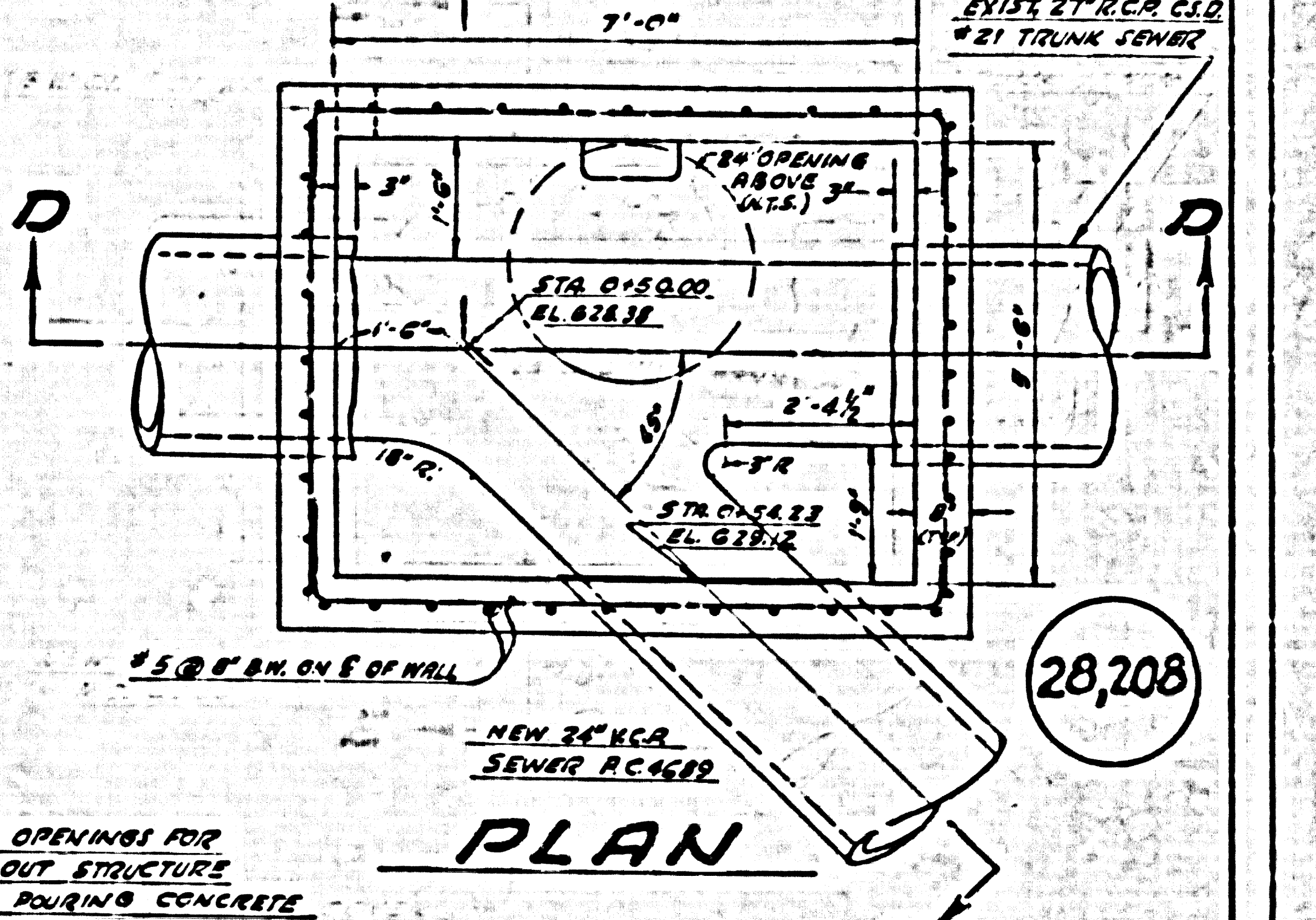


DOUBLE T BEAM & SADDLE
SECT. F-F
SCALE: 1"=1'-0"

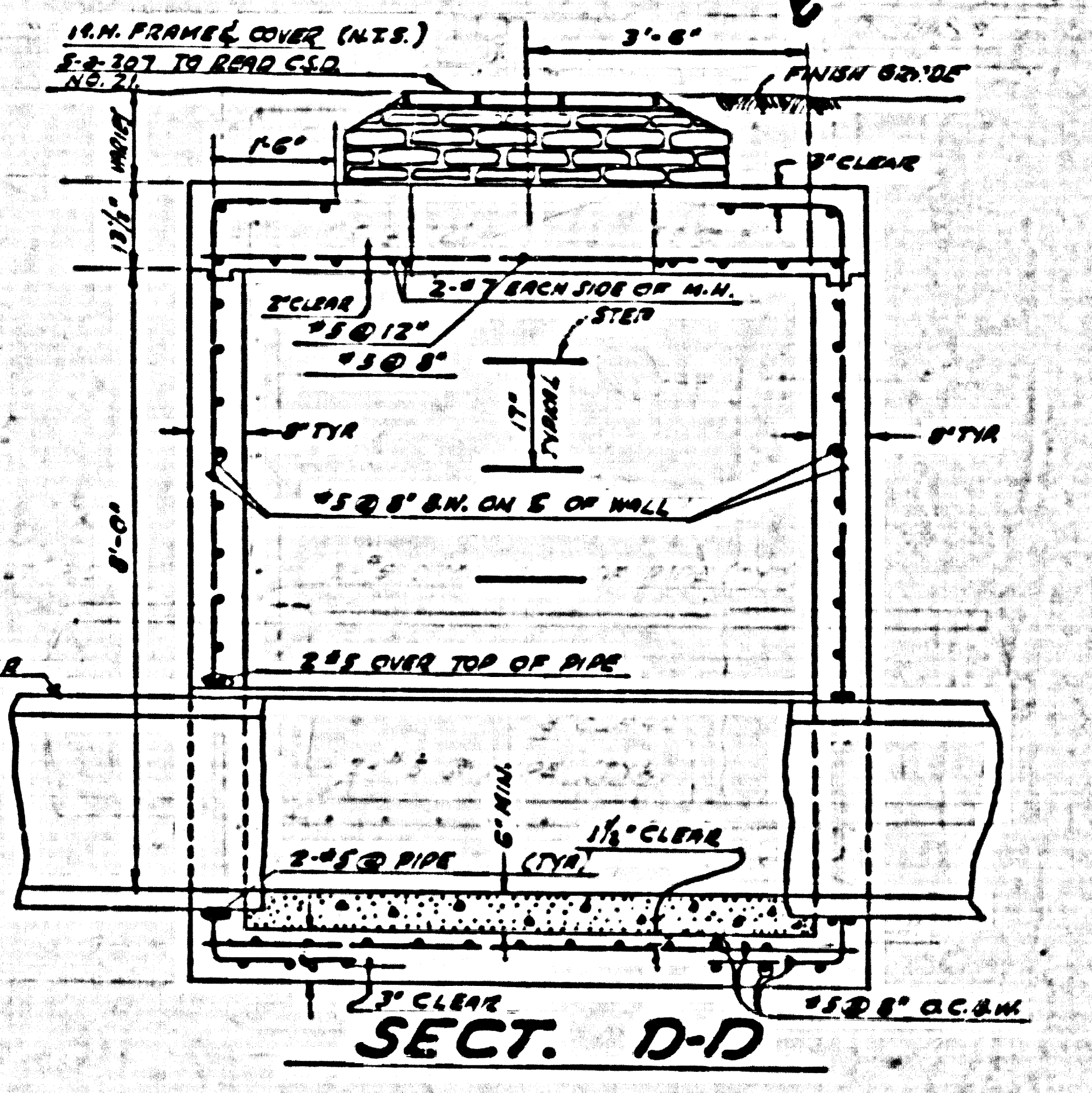
Note: See Notes on Page 10A and Quinton Engineers' Specifications No. 5770D, Section 3.



SECT. E-E
SCALE: 1/2"=1'-0"



PLAN



SECT. D-D
SCALE: 1/2"=1'-0"

SPECIAL JUNCTION CHAMBER STRUCTURE
SCALE: 1/2"=1'-0"

- CONSTRUCTION SEQUENCE**
1. CONSTRUCT WALLS AND BOTTOM SLAB OF STRUCTURE
 2. PLUG ALL OPENINGS.
 3. BREAK OUT EXIST 21\"/>

PRIVATE CONTRACT No. 4689
CONSTRUCTION DETAILS
FOR
SEWERS IN BREA CANYON ROAD
AND
SANITARY SEWER RIGHTS OF WAY

SHEET 6 OF 6 SHEETS
Scale: As shown JULY, 1955
COUNTY OF LOS ANGELES
JOHN R. LAMBIE COUNTY ENGINEER
PREPARED IN THE OFFICES
OF
QUINTON ENGINEERS, LTD.
H. W. Foxner
RE. 6433

Approved: C. R. COMPTON
CHIEF ENGINEER
By: [Signature]
Checked by: [Signature]
Office of County Engineer R.E. 3406

S. C. 4689

(2)