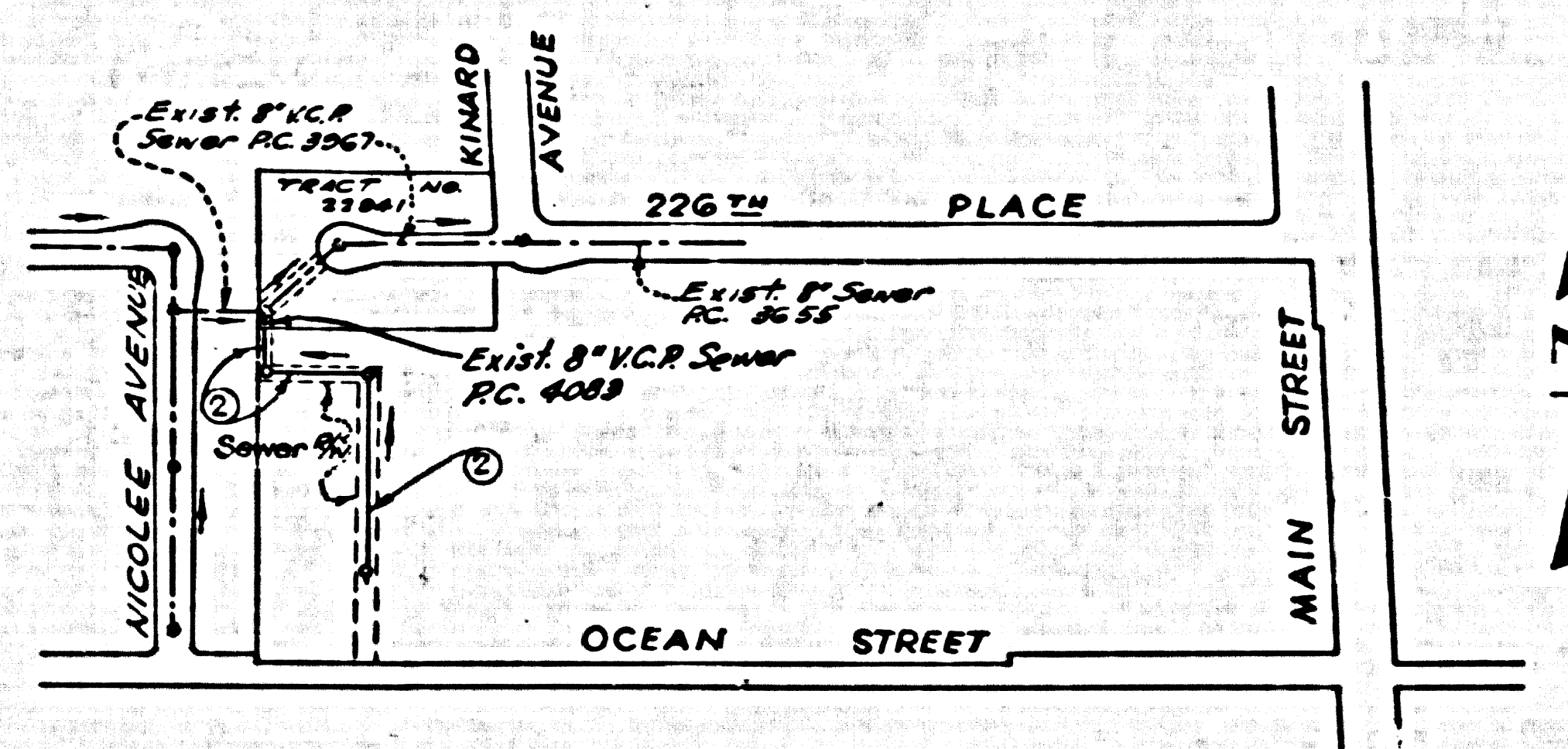


LOMITA BLDG. DIST. NO. 7.1

PROFILE ALIGNMENT AND GRADE OF P.C. 4693
 SANITARY SEWERS PAGE 1
 TO BE CONSTRUCTED IN A
 SANITARY SEWER RIGHT-OF-WAY



INDEX MAP
 SCALE 1"=200'
 P.C. No. 4693

- NOTES:
- PROVIDE STAKES ON THE PROPERTY LINE OR PROPERTY LINES PRODUCED AT RIGHT ANGLES TO THE SEWER LINE AT THE CENTER LINE OF EACH MANHOLE.
 - NO REPRESENTATIVE OF THE COUNTY ENGINEER WILL SURVEY OR LAYOUT ANY PORTION OF THE WORK.
 - THE OWNER OR HIS AUTHORIZED REPRESENTATIVE SHALL FURNISH THE COUNTY ENGINEER WITH GRADE SHEETS AND STATION FOR ALL HOUSE LATERALS AND Y BRANCHES AND SHALL PROVIDE STAKES FOR THEM AT THEIR PROPER LOCATIONS WITH STATIONING PLAINLY MARKED. ANY CHANGE IN LOCATION SHALL BE REQUESTED IN WRITING BY THE OWNER OR HIS REPRESENTATIVE.
 - NO REVISIONS SHALL BE MADE IN THESE PLANS WITHOUT THE APPROVAL OF THE COUNTY ENGINEER.
 - USE STANDARD MANHOLE FRAMES AND COVERS, S.A.117, EXCEPT AS NOTED.
 - USE STANDARD STRENGTH PIPE EXCEPT AS NOTED.
 - USE CEMENT MORTAR "WEDGE-LOCK" OR "PRESS-SEAL" FOR ALL VITRIFIED CLAY PIPE JOINTS PER "SPEC. SECS. 8 & 9".
 - RESURFACE ALL TRENCH WITH PAVED AREA TO MEET L. A. COUNTY ROAD DEPT., OR CALIF. STATE HIGHWAY DEPT. REQUIREMENTS IN ACCORDANCE WITH PERMITS.
 - ENCASE FOUR FEET OF SEWER AT POINTS OF INTERFERENCE WITH POLES, S.A.119.
 - ALL STRUCTURES SHALL BE BRICK SEWER STRUCTURES, S.A.104, EXCEPT AS NOTED.
 - FOR ALLOWABLE LEAKAGE TEST USE FORMULA NO. 1, SECS. 8 & 9.
 - MANHOLE TOPS IN UNIMPROVED RIGHTS-OF-WAY TO BE 6" ABOVE FINISHED GRADE.
 - ALL THE LOCATIONS SHOWN FOR EXISTING SUBSTRUCTURES HAVE BEEN TAKEN FROM RECORDS AND THEIR CORRECTNESS AND COMPLETENESS IS IN NO WAY GUARANTEED, IT SHALL BE THE CONTRACTOR'S RESPONSIBILITY ALONE TO DEFINITELY LOCATE ALL UNDERGROUND LINES OF EVERY NATURE WHETHER SHOWN HEREON OR NOT, AND PROTECT THEM FROM DAMAGE, THE CONTRACTOR SHALL BEAR THE TOTAL EXPENSE OF REPAIR TO ANY LINE DAMAGED BY ANY OPERATION IN CONNECTION WITH THE PROSECUTION OF THIS WORK.

PRIVATE CONTRACT NO. 4693
 W.S. 28
 1 SHEET, 2 PAGES
 SCALE: VERT. 1"=4' HORIZ. 1"=40'
 PREPARED IN THE OFFICES OF
 BARCLAY ENGINEERING CO., INC.
 BY Edward L. Pearson
 REG. C. E. NO. 8783
 FOR LEGEND SEE PLAN NO. S.A.64

26,026

NOTE:
 THE CONTRACTOR SHALL NOTIFY THE CONSTRUCTION AND STORM DRAIN DIVISION BY TELEPHONE, MADISON 8-4747, EXT. 342 AT LEAST 24 HOURS BEFORE STARTING ANY WORK UNDER THIS CONTRACT.

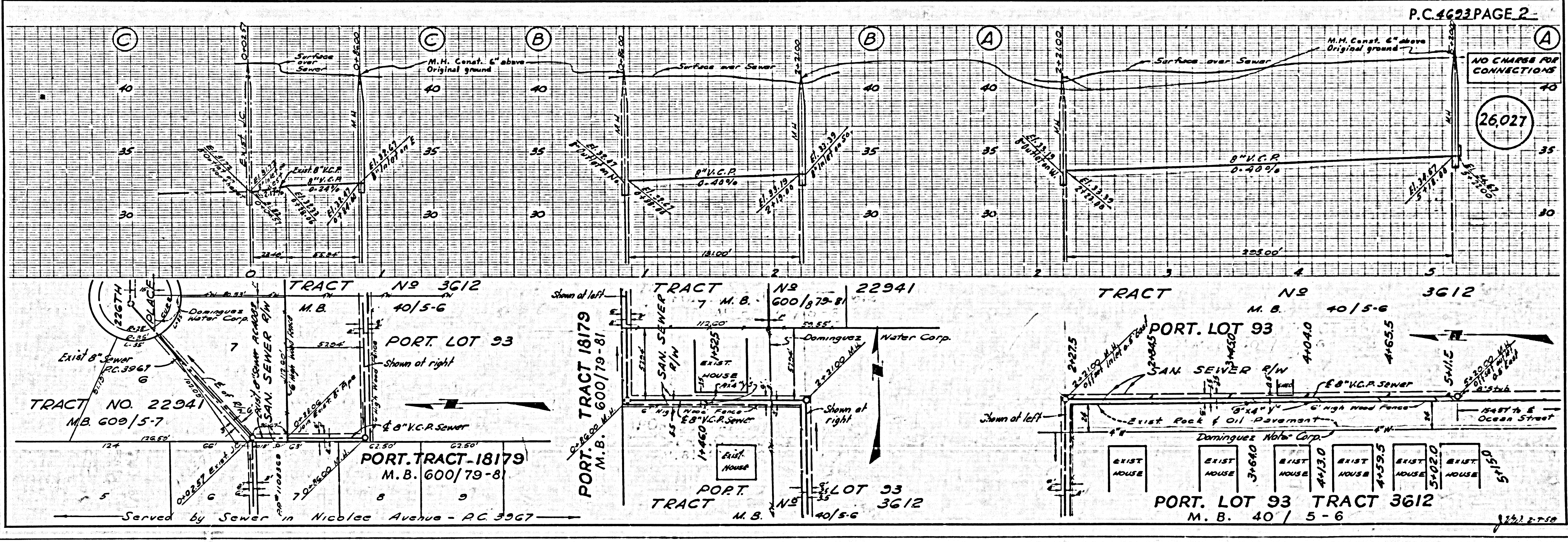
EX. 9926 El. 35.678 L. & T. in Conc. Pavement 2' 19" W. 4. Int. Main 8" x 223 82 Street. per S.

REVISION:
 Revised sewer grades between Sta. 0+22.16 to Sta. 5+20.00
 CHECKED BY: Ed. L. Pearson 6-20-58
 OFFICE OF COUNTY ENGINEER REG. C. E. NO. 8639

NO CHARGE FOR CONNECTIONS
 W. J. C. Pearson 6-2-58

NOTE:
 GRADES TO WHICH THE IMPROVEMENT IS TO BE CONSTRUCTED ARE SHOWN ON PLANS AND PROFILES. GRADE POINTS FOR TOP OF CURBS, CENTER LINE OF STREETS, OR CENTER LINE OF ALLEYS ARE SHOWN BY CIRCLES ON PROFILES. AT ALL POINTS BETWEEN DESIGNATED POINTS THE GRADE SHALL BE ESTABLISHED SO AS TO CONFORM TO A STRAIGHT LINE DRAWN BETWEEN SAID DESIGNATED POINTS.
 ELEVATIONS ARE IN FEET ABOVE U.S.C. & G.S. SEA LEVEL DATUM OF 1929.
 THIS DRAWING AND THE DATA HEREON ARE HEREBY MADE A PART OF THE SPECIFICATIONS.
 WORK SHALL BE CONSTRUCTED ACCORDING TO SPECIFICATIONS ON FILE IN THE OFFICE OF THE COUNTY ENGINEER AND SHALL BE PROTECTED ONLY IN THE PRESENCE OF THE COUNTY ENGINEER.
 BEFORE WORK CAN BE STARTED, THE CONTRACTOR MUST OBTAIN A PERMIT TO EXCAVATE IN COUNTY STREETS FROM THE L. A. COUNTY ROAD DEPT., DISTRICT 2, AND MAKE A DEPOSIT WITH THE COUNTY ENGINEER, ROOM 524 PEARL AMERICAN BLDG., 323 30 BROADWAY SUFFICIENT TO COVER THE COST OF CONSTRUCTION INSPECTION AND RECORD PLANS.
 APPROVAL OF THIS PLAN BY THE COUNTY OF LOS ANGELES DOES NOT CONSTITUTE A REPRESENTATION AS TO THE ACCURACY OF THE LOCATION OF OR THE EXISTENCE OR NON-EXISTENCE OF ANY UNDERGROUND UTILITY PIPE, OR STRUCTURE WITHIN THE LIMITS OF THE PROJECT. THIS NOTE APPLIES TO ALL PAGES.
 IF WORK IS TO BE DONE IN A STATE HIGHWAY, A PERMIT MUST BE OBTAINED FROM THE STATE OF CALIFORNIA, DIVISION OF HIGHWAYS, 128 SOUTH SPRING STREET.

COUNTY OF LOS ANGELES, CALIFORNIA
 APPROVED, JOHN A. LAMBE, COUNTY ENGINEER
 APPROVED, A. M. EARN, CHIEF ENGINEER
 CO. SAN. ENGR. NO. 8
 BY: E. H. Hughes, SANITATION ENGINEER
 BY: J. C. Pearson, OFFICE ENGINEER
 CHECKED BY: W. J. C. Pearson 6-2-58
 OFFICE OF COUNTY ENGINEER, REG. C. E. NO. 3402



P.C. 4693 PAGE 2

NO CHARGE FOR CONNECTIONS

26,027