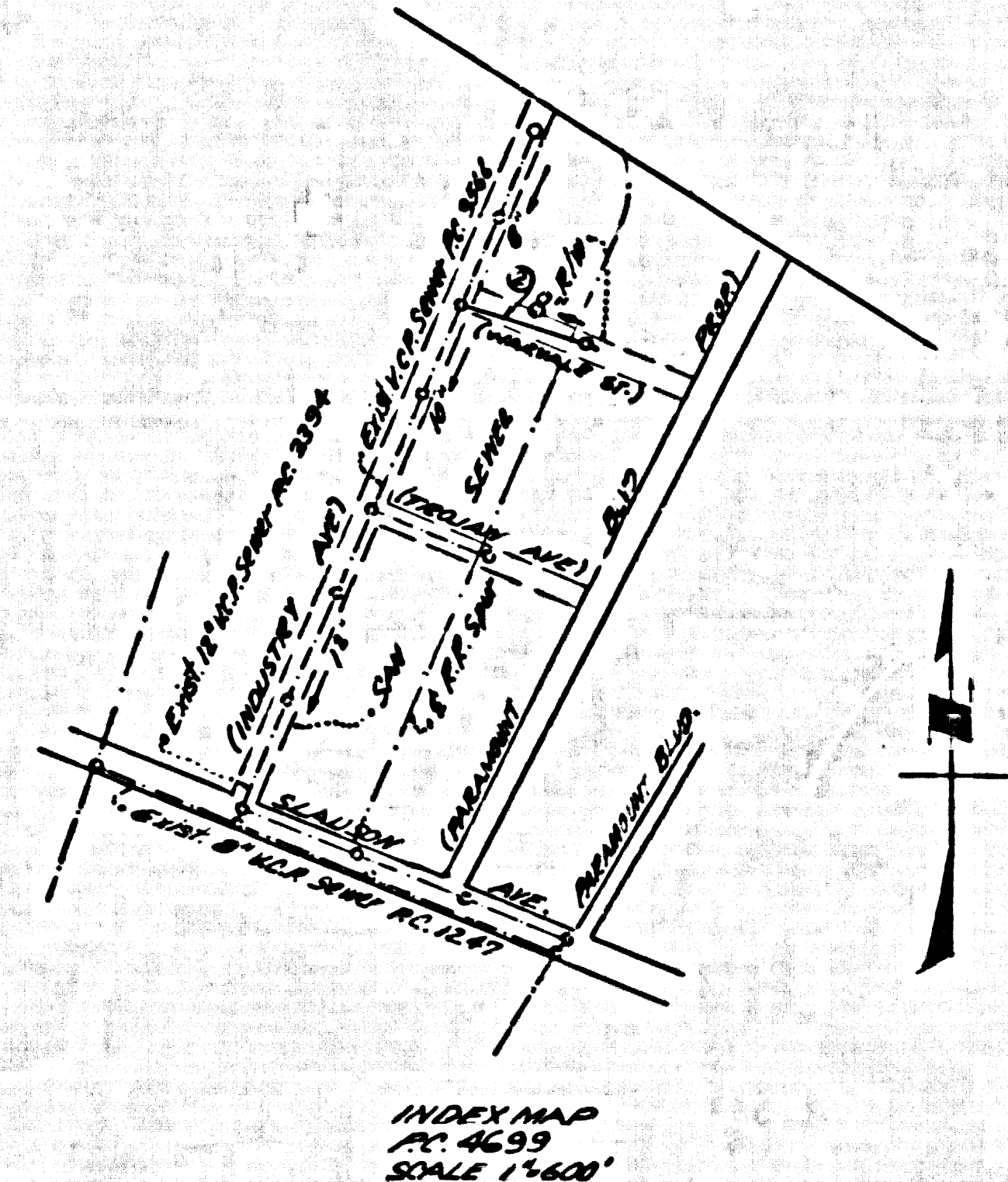


Plan of ...  
...  
...  
...



# PICO RIVERA BLDG. DIST. NO. 11.01

JN.086055  
P.C.4699  
PROFILE ALIGNMENT AND GRADE OF  
SANITARY SEWERS PAGE 1

TO BE CONSTRUCTED IN  
SANITARY SEWER R/W  
EAST OF INDUSTRY AVE.  
(WARVALE STREET - PVT. ST.)

PRIVATE CONTRACT NO. 4699  
W.S. 36 JN.086055

1 SHEET, 2 PAGES

SCALE: VERT. 1" = 4' FEB. 1958

26,100

PREPARED IN THE OFFICES OF  
CONLEY ENGINEERING CO.

By: *Henry G. Conley*  
REG. C. & NO. 5468

FOR LEGEND SEE PLAN NO. S-A-64

- NOTES:
1. IN CURVE STAKES ON THE PROPERTY LINE OR PROPERTY LINES PRODUCED AT RIGHT ANGLES TO THE SEWER LINE AT THE CENTER LINE OF EACH MANHOLE.
  2. NO REPRESENTATIVE OF THE CITY ENGINEER WILL SURVEY OR LAYOUT ANY PORTION OF THE WORK.
  3. THE OWNER OR HIS AUTHORIZED REPRESENTATIVE SHALL FURNISH THE CITY ENGINEER WITH GRADE SHEETS AND STATION FOR ALL HOUSE LATERALS AND Y BRANCHES AND SHALL PROVIDE STAKES FOR THEM AT THEIR PROPER LOCATIONS WITH STATION AND PLAINLY MARKED. ANY CHANGE IN LOCATION SHALL BE REQUESTED IN WRITING BY THE OWNER OR HIS REPRESENTATIVE.
  4. NO REVISIONS SHALL BE MADE IN THESE PLANS WITHOUT THE APPROVAL OF THE CITY ENGINEER.
  5. USE STANDARD MANHOLE FRAMES AND COVERS, 24" X 24", EXCEPT AS NOTED.
  6. USE STANDARD STRENGTH PIPE EXCEPT AS NOTED.
  7. USE CEMENT MORTAR "MANHOLE" BRICKS - 4" X 8" X 16" - WITH ALL UNFITTED GRAY PAINT JOINTS PER SPEC. 604.2 34.4.48
  8. INTERSPACE ALL BRANCH WITHIN PAVED AREA TO MEET L. A. COUNTY ROAD DEPT., OR CALIF. STATE HIGHWAY DEPT., REQUIREMENTS BY ACCORDANCE WITH PERMITS.
  9. INCREASE FLOOR HEIGHT AT POINTS OF INTERFERENCE WITH POLES, E.A. 119.
  10. HOUSE LATERALS TO BE CONSTRUCTED BY THE OWNER AND NOT TO BE PAID FOR BY THE CITY.
  11. ALL STRUCTURES SHALL BE SINCE SEWER STRUCTURE, S.A. 104, EXCEPT AS NOTED.
  12. FOR ALLOWABLE LEAKAGE TEST USE FORMULA NO. 1 SPEC'S, S.C. 64.
  13. MANHOLE TOPS IN UNIMPROVED AREAS TO BE 6" ABOVE FINISHED GRADE.
  14. THE PRIVATE ENGINEER IS TO PROVIDE THE HOUSE LATERAL DEPTH AT THE R/W LINE BELOW THE ELEVATION OR CENTERLINE OF R/W FOR EACH HOUSE LATERAL, ON THE SAME SHEET.

NOTE:  
THE CONTRACTOR SHALL NOTIFY THE CONSTRUCTION AND STORM DRAIN DIVISION BY TELEPHONE, MADISON 9-4747, EXT. 362, AT LEAST 24 HOURS BEFORE STARTING ANY WORK UNDER THIS CONTRACT.

NO CHARGE FOR CONNECTIONS  
7.77<sup>c</sup> 5-27-58

NOTES:

GRADES TO WHICH THE IMPROVEMENT IS TO BE CONSTRUCTED ARE SHOWN ON PLANS AND PROFILE GRADE POINTS FOR TOP OF CURB, CENTER LINE OF STREET, OR CENTER LINE OF ALLEY ARE SHOWN BY CIRCLES ON PROFILES. AT ALL POINTS BETWEEN DESIGNATED POINTS THE GRADE SHALL BE ESTABLISHED SO AS TO CONFORM TO A STRAIGHT LINE DRAWN BETWEEN SAID DESIGNATED POINTS.

ELEVATIONS ARE IN FEET ABOVE U.S.C. & G.S. MEAN SEA LEVEL DATUM OF 1929.

THIS DRAWING AND THE DATA HEREON ARE HEREBY MADE A PART OF THE SPECIFICATIONS.

WORK SHALL BE CONSTRUCTED ACCORDING TO SPECIFICATIONS ON FILE IN THE OFFICE OF THE CITY ENGINEER AND SHALL BE PROSECUTED ONLY IN THE PRESENCE OF THE CITY ENGINEER.

BEFORE WORK CAN BE STARTED THE CONTRACTOR MUST OBTAIN A PERMIT TO EXCAVATE IN CITY STREETS FROM THE L. A. COUNTY ROAD DEPT., DISTRICT AREA AND MAKE A DEPOSIT WITH THE CITY ENGINEER, ROOM 104 PEARL ALLEY BUILDING, 118 SO. BROADWAY SUFFICIENT TO COVER THE COST OF CONSTRUCTION INSPECTION AND RECORD PLANS.

APPROVAL OF THIS PLAN BY THE CITY OF PICO RIVERA DOES NOT CONSTITUTE A REPRESENTATION AS TO THE ACCURACY OF THE LOCATION OF OR THE EXISTENCE OR NON-EXISTENCE OF ANY UNDERGROUND UTILITY PIPE, OR STRUCTURE WITHIN THE LIMITS OF THE PROJECT. THIS NOTE APPLIES TO ALL PAGES.

IF WORK IS TO BE DONE IN A STATE HIGHWAY, A PERMIT MUST BE OBTAINED FROM THE STATE OF CALIFORNIA, DIVISION OF HIGHWAYS, 120 SOUTH SPRING STREET.

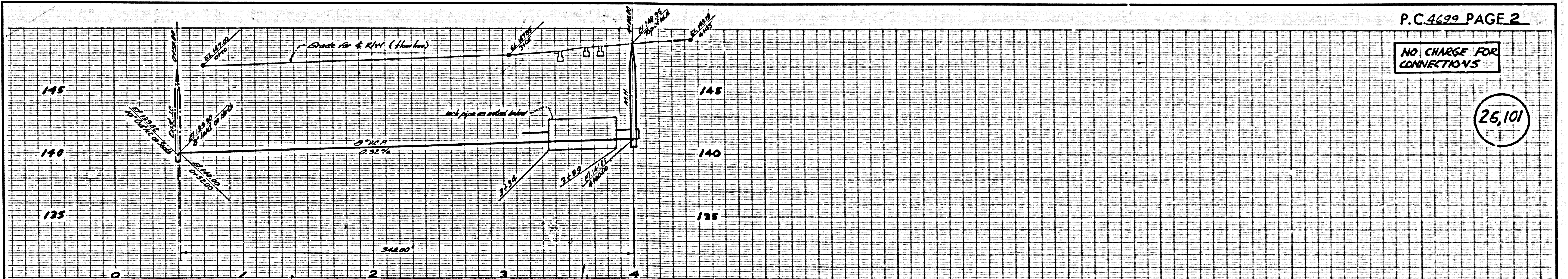
CITY OF PICO RIVERA, CALIFORNIA.

APPROVED, JOHN A. LAMAR, CITY ENGINEER  
APPROVED, A. M. BAWN, CHIEF ENGINEER

By: *J. A. Lamar*  
SANITATION ENGINEER  
By: *A. M. Bawn*  
OFFICE ENGINEER

CHECKED BY: *W. D. Wain* 5-27-58  
OFFICE OF CITY ENGINEER, REG. C. & NO. 5468

APPROVED FOR INDUSTRIAL WASTE  
*Frank ...* DATE 4-8-58



P.C.4699 PAGE 2

NO CHARGE FOR CONNECTIONS

26,100

