

WHITTIER BLDG. DIST. NO. 11

PROFILE ALIGNMENT AND GRADE OF P.C. 4703
 SANITARY SEWERS PAGE 1

TO BE CONSTRUCTED IN
 SANITARY SEWER R/W
 NORTH OF MILLER ROAD

PRIVATE CONTRACT NO. 4703

W.S. 34
 1 SHEET, 2 PAGES

SCALE: VERT. 1" = 4'
 HORIZ. 1" = 40' FEB., 1958

PREPARED IN THE OFFICES OF
 KEMMERER ENGINEERING CO., INC.

BY Hans C. Hansen
 REG. C. E. NO. 8222

FOR LEGEND SEE PLAN NO. S-A-64

26,135

- NOTES:
- PROVIDE STAKES ON THE PROPERTY LINE OR PROPERTY LINES PRODUCED AT RIGHT ANGLES TO THE SEWER LINE AT THE CENTER LINE OF EACH MANHOLE.
 - NO REPRESENTATIVE OF THE COUNTY ENGINEER WILL SURVEY OR LAYOUT ANY PORTION OF THE WORK.
 - THE OWNER OR HIS AUTHORIZED REPRESENTATIVE SHALL FURNISH THE COUNTY ENGINEER WITH GRADE SHEETS AND STATION FOR ALL HOUSE LATERALS AND Y BRANCHES AND SHALL PROVIDE STAKES FOR THEM AT THEIR PROPER LOCATIONS WITH STATIONING PLAINLY MARKED. ANY CHANGE IN LOCATION SHALL BE INDICATED BY WRITING BY THE OWNER OR HIS REPRESENTATIVE.
 - NO DIVISIONS SHALL BE MADE IN THESE PLANS WITHOUT THE APPROVAL OF THE COUNTY ENGINEER.
 - USE STANDARD MANHOLE FRAMES AND COVERS, S-A-117, EXCEPT AS NOTED.
 - USE STANDARD STRENGTH PIPE EXCEPT AS NOTED.
 - USE CEMENT MORTAR OR "WEDGE-LOCK" OR "SPREAD-SEAL" FOR ALL INTERIOR CLAY PIPE JOINTS.
 - RESURFACE ALL TRENCH WITHIN PAVED AREA TO MEET L. A. COUNTY ROAD DEPT., OR CALIF. STATE HIGHWAY DEPT. REQUIREMENTS IN ACCORDANCE WITH PERMITS.
 - ENCASE FOUR FEET OF SEWER AT POINTS OF INTERFERENCE WITH POLES, S-A-119.
 - STANDARD SANITARY TO BE CONSTRUCTED WITH UNLESS OTHERWISE NOTED.
 - ALL STRUCTURES SHALL BE BRICK SEWER STRUCTURES, S-A-194, EXCEPT AS NOTED.
 - FOR ALLOWABLE LEAKAGE TEST USE FORMULA NO. 1 SPEC'S, SEC. 82
 - MANHOLE TOPS IN UNIMPROVED RIGHTS-OF-WAY TO BE 6" ABOVE FINISHED GRADE.

THE CONTRACTOR SHALL NOTIFY THE CONSTRUCTION AND STORM DRAIN DIVISION BY TELEPHONE MADISON 3-4747 EXT. 362 AT LEAST 24 HOURS BEFORE STARTING ANY WORK UNDER THIS CONTRACT.

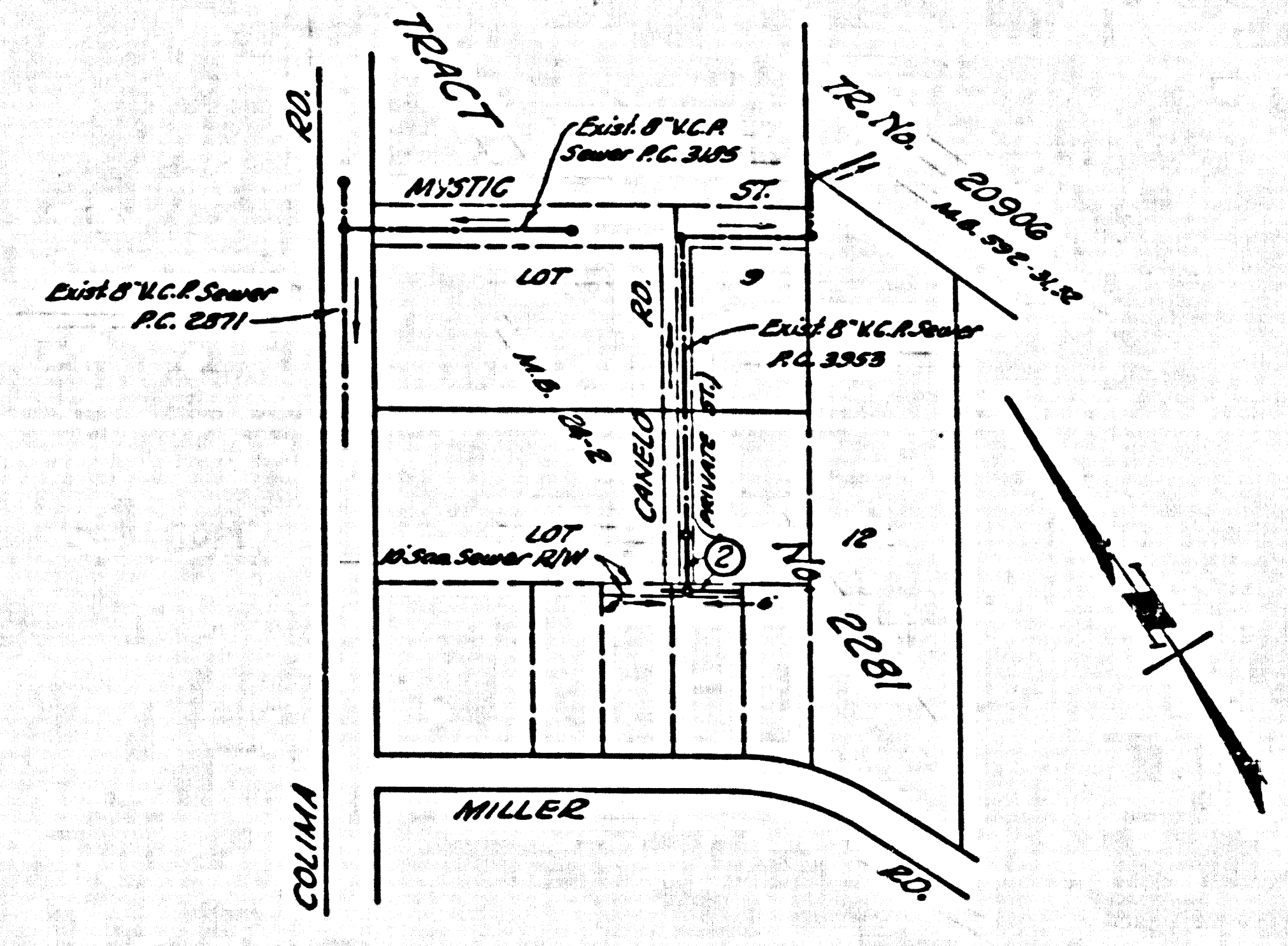
NOTE:
 GRADES TO WHICH THIS IMPROVEMENT IS TO BE CONSTRUCTED ARE SHOWN ON PLAN AND PROFILE. GRADE POINTS ARE TOP OF CURBS, CENTER LINE OF STREETS, OR CENTER LINE OF ALLEYS ARE SHOWN BY CIRCLES ON PROFILES. AT ALL POINTS BETWEEN DESIGNATED POINTS THE GRADE SHALL BE ESTABLISHED SO AS TO CONFORM TO A STRAIGHT LINE DRAWN BETWEEN SAID DESIGNATED POINTS.
 ELEVATIONS ARE IN FEET ABOVE U.S.C. & G.S. SEA LEVEL UNLESS OTHERWISE NOTED.
 THIS DRAWING AND THE DATA HEREON ARE HEREBY MADE A PART OF THE SPECIFICATIONS.
 BEFORE WORK CAN BE STARTED, THE CONTRACTOR MUST OBTAIN A PERMIT TO EXCAVATE IN COUNTY STREETS FROM THE L. A. COUNTY ROAD DEPT., EXCEPT WHERE SHOWN OTHERWISE WITH THE COUNTY ENGINEER, ROOM 104 FARM ANCHOR BLDG., 233 SO. BROADWAY SUFFICIENT TO COVER THE COST OF CONSTRUCTION INSPECTION AND RECORD PLANS.
 APPROVAL OF THIS PLAN BY THE COUNTY OF LOS ANGELES DOES NOT CONSTITUTE A REPRESENTATION AS TO THE ACCURACY OF THE LOCATION OF OR THE EXISTENCE OR NON-EXISTENCE OF ANY UNDERGROUND UTILITY PIPE, OR STRUCTURE WITHIN THE LIMITS OF THIS PROJECT. THIS NOTE APPLIES TO ALL PAGES.
 IF WORK IS TO BE DONE ON A STATE HIGHWAY, A PERMIT MUST BE OBTAINED FROM THE STATE OF CALIFORNIA, DIVISION OF HIGHWAYS, 128 SOUTH SPRING STREET.

COUNTY OF LOS ANGELES, CALIFORNIA

APPROVED, JOHN A. LAMBE, COUNTY ENGINEER APPROVED, A. M. RAWN, CHIEF ENGINEER

BY L. H. Hughes SANITATION ENGINEER BY H. C. Hansen OFFICE ENGINEER

CHECKED BY S. J. Dain 7-9-58 OFFICE OF COUNTY ENGINEER, REG. C. E. NO. 3066



INDEX MAP
 P.C. 4703 Scale: 1" = 200'

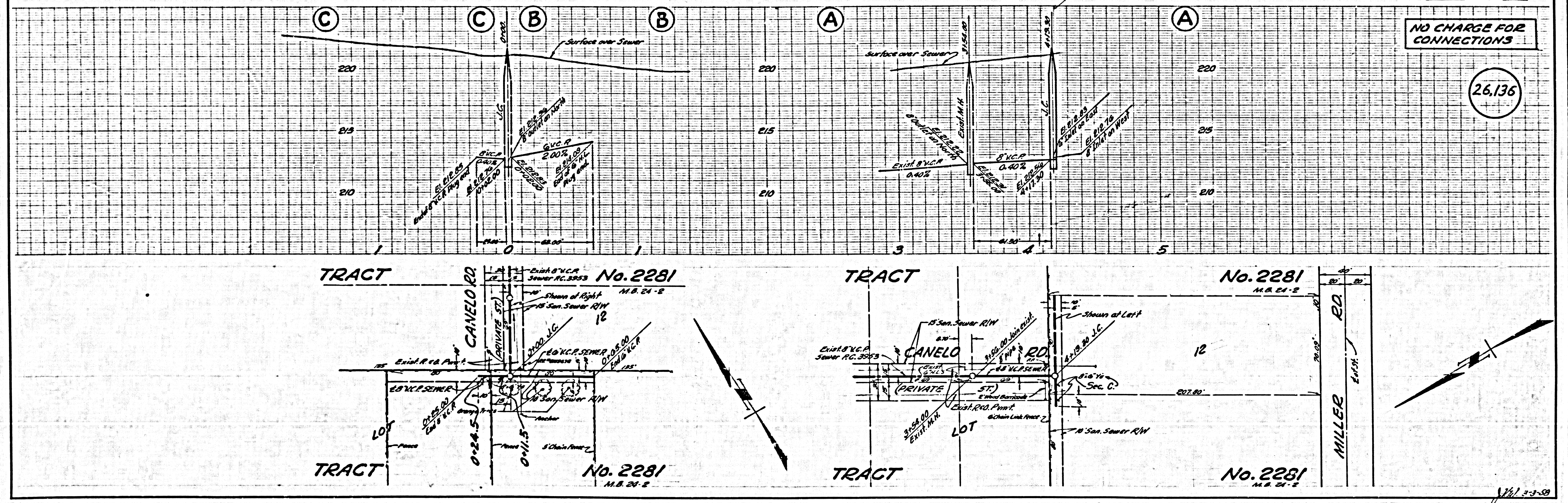
B.M. S.Y. 1155 Cut Spk. Intersection
 of Leffingwell Rd. & Arroyo Dr.
 ELEV. 186.557

NO CHARGE FOR CONNECTIONS
 L. Hansen 7-9-58

P.C. 4703 PAGE 2

NO CHARGE FOR CONNECTIONS

26,136



7/21 7-3-58