

WHITTIER BLDG. DIST. NO. 11

PROFILE ALIGNMENT AND GRADE OF P.C. 4705  
 SANITARY SEWERS PAGE 1  
 TO BE CONSTRUCTED IN

TRACT No 23860  
 PRIVATE CONTRACT NO. 4705

25,903

W.S. 38  
 2 SHEETS, 2 PAGES

SCALE: VERT. 1"=4'  
 HORIZ. 1"=40' FEB., 1958

PREPARED IN THE OFFICES OF

KEMMERER ENGINEERING CO. INC.  
 HARRY C. THOMPSON  
 REG. C. E. NO. 3222

FOR LEGEND SEE PLAN NO. S-A-64

- NOTES
- PROVIDE STAKES ON THE PROPERTY LINE OR PROPERTY LINES PRODUCED AT RIGHT ANGLES TO THE SEWER LINE AT THE CENTER LINE OF EACH MANHOLE.
  - NO REPRESENTATIVE OF THE COUNTY ENGINEER WILL SURVEY OR LAYOUT ANY PORTION OF THE WORK.
  - THE OWNER OR HIS AUTHORIZED REPRESENTATIVE SHALL FURNISH THE COUNTY ENGINEER WITH GRAB SHEETS AND SECTION FOR ALL HOUSE LATERALS AND Y BRANCHES AND SHALL PROVIDE STAKES FOR THEM AT THEIR PROPER LOCATIONS WITH STATIONING AND PLAINLY MADE. ANY CHANGE IN LOCATION SHALL BE REQUESTED IN WRITING BY THE OWNER OR HIS REPRESENTATIVE.
  - NO REVISIONS SHALL BE MADE IN THESE PLANS WITHOUT THE APPROVAL OF THE COUNTY ENGINEER.
  - USE STANDARD MANHOLE FRAMES AND COVERS, S-A-117, EXCEPT AS NOTED.
  - USE STANDARD STRENGTH PIPE EXCEPT AS NOTED.
  - USE CEMENT MORTAR OR "WEDGEO" LOCK JOINT "BELL" OR "BELL" JOINT FOR ALL VITRIFIED CLAY PIPE UNLESS OTHERWISE SPECIFIED.
  - RESURFACE ALL TRENCH WITHIN PAVED AREA TO MEET L. A. COUNTY ROAD DEPT. OR CALIF. STATE HIGHWAY DEPT. REQUIREMENTS IN ACCORDANCE WITH PERMITS.
  - INCISE FOUR FEET OF SEWER AT POINTS OF INTERFERENCE WITH POLES, S-A-176, CHOP B.
  - HOUSE LATERALS TO BE CONSTRUCTED WITH INVERTS AT PROPERTY LINE 6" FEET BELOW 200 GRADE EXCEPT AS NOTED.
  - ALL STRUCTURES SHALL BE BRICK SEWER STRUCTURES, S-A-164, EXCEPT AS NOTED.
  - FOR ALLOWABLE LEAKAGE TEST USE FORMULA NO. 1 SPEC'S, SEC. 54.
  - MANHOLE TOPS IN UNIMPROVED RIGHTS-OF-WAY TO BE 6" ABOVE FINISHED GRADE.
  - IF THE PRIVATE ENGINEER IS TO FURNISH THE HOUSE LATERAL WITHIN AT THE PROPERTY LINE BELOW THE TOP OF 200 GRADE ELEVATION FOR EACH HOUSE LATERAL BY THE GRADE SHEET.

THE CONTRACTOR SHALL NOTIFY THE CONSTRUCTION AND STORM DRAIN DIVISION BY TELEPHONE MADISON 9-4747 EXT. 362, AT LEAST 24 HOURS BEFORE STARTING ANY WORK UNDER THIS CONTRACT.

C.S. Precise Level Net. Lic. #39  
 B.M. #58-2  
 Hacienda Blvd. & L.A. Co., Orange Co. Lic. & Inter. in a well protected by a cast iron cover marked "Co. Ser. Man." a S.V. C.S. Man. 18-1353-B 1954 Adj. Elev. 423.0078

NO CHARGE FOR CONNECTIONS  
 L. Lester 3-25-58

NOTES

GRADES TO WHICH THIS IMPROVEMENT IS TO BE CONSTRUCTED ARE SHOWN ON PLANS AND PROFILES. GRADE POINTS FOR TOP OF CURB, CENTER LINE OF STREET, OR CENTER LINE OF ALLEYS ARE SHOWN BY CIRCLES ON PROFILES. AT ALL POINTS BETWEEN DESIGNATED POINTS THE GRADE SHALL BE ESTABLISHED SO AS TO CONFORM TO A STRAIGHT LINE DRAWN BETWEEN SAID DESIGNATED POINTS.

ELEVATIONS ARE IN FEET ABOVE U.S.C. & G.S. SEA LEVEL DATUM OF 1929.

THIS DRAWING AND THE DATA HEREON ARE HEREBY MADE A PART OF THE SPECIFICATIONS.

WORK SHALL BE CONSTRUCTED ACCORDING TO SPECIFICATIONS ON FILE IN THE OFFICE OF THE COUNTY ENGINEER AND SHALL BE PROTECTED ON BY THE PRESENCE OF THE COUNTY ENGINEER.

BEFORE WORK CAN BE STARTED, THE CONTRACTOR MUST OBTAIN A PERMIT TO EXCAVATE IN COUNTY STREETS FROM THE L. A. COUNTY ROAD DEPT., 100 W. 5TH ST AND MAKE A DEPOSIT WITH THE COUNTY ENGINEER, ROOM 204 PAN AMERICAN BUILDING, 210 SO. BROADWAY SUFFICIENT TO COVER THE COST OF CONSTRUCTION INSPECTION AND RECORD PLANS.

APPROVAL OF THIS PLAN BY THE COUNTY OF LOS ANGELES DOES NOT CONSTITUTE A REPRESENTATION AS TO THE ACCURACY OF THE LOCATION OR THE EXISTENCE OR NON-EXISTENCE OF ANY UNDERGROUND UTILITY PIPE, OR STRUCTURE WITHIN THE LIMITS OF THE PROJECT. THIS NOTE APPLIES TO ALL PAGES.

IF WORK IS TO BE DONE IN A STATE HIGHWAY, A PERMIT MUST BE OBTAINED FROM THE STATE OF CALIFORNIA, DIVISION OF HIGHWAYS, 120 SOUTH SPRING STREET.

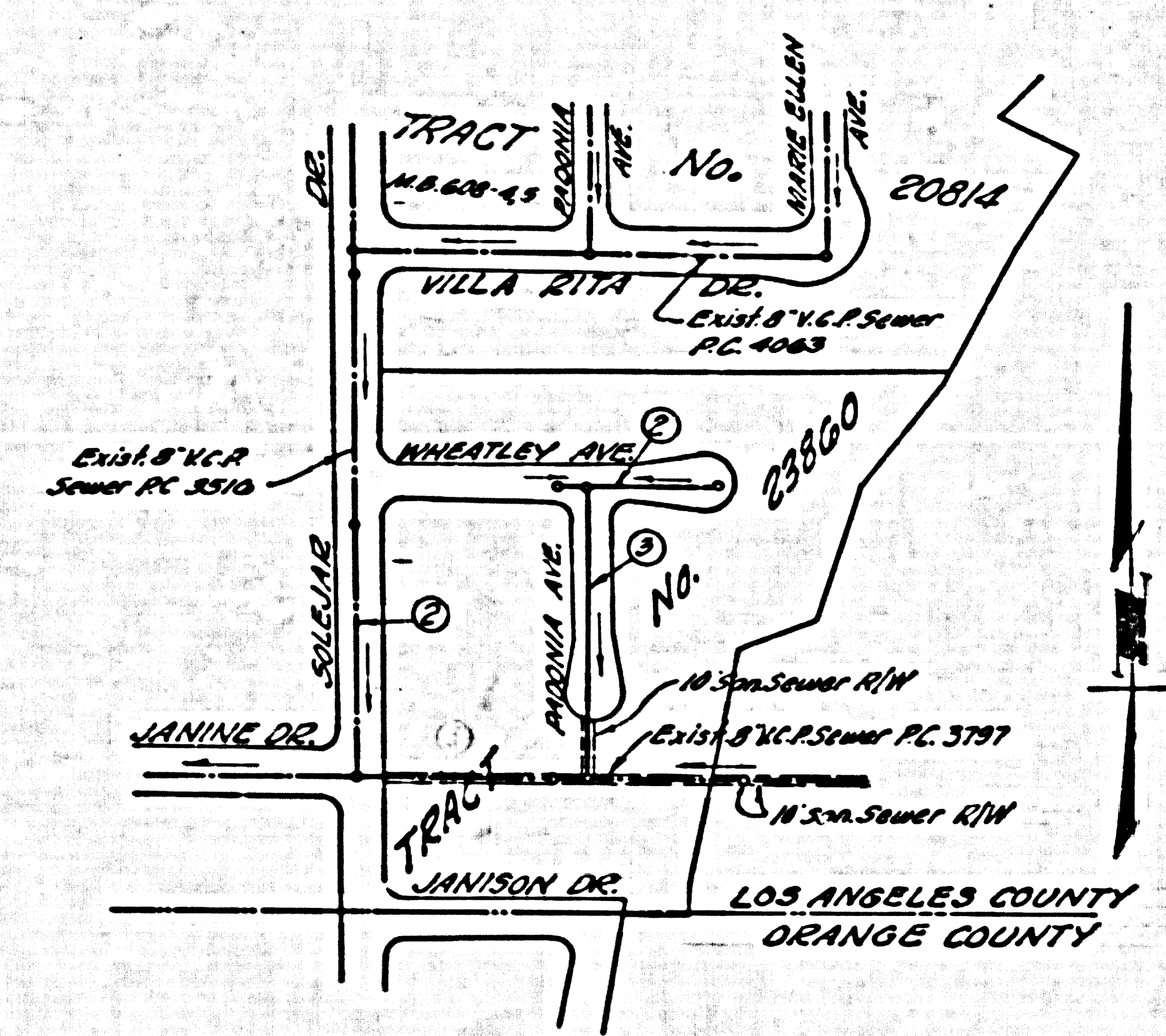
COUNTY OF LOS ANGELES, CALIFORNIA

APPROVED, JOHN A. LAMME, COUNTY ENGINEER  
 APPROVED, A. M. BAWN, CHIEF ENGINEER  
 NO. SAN. DIST. NO. 13

BY *L. Lester*  
 INSULATION ENGINEER

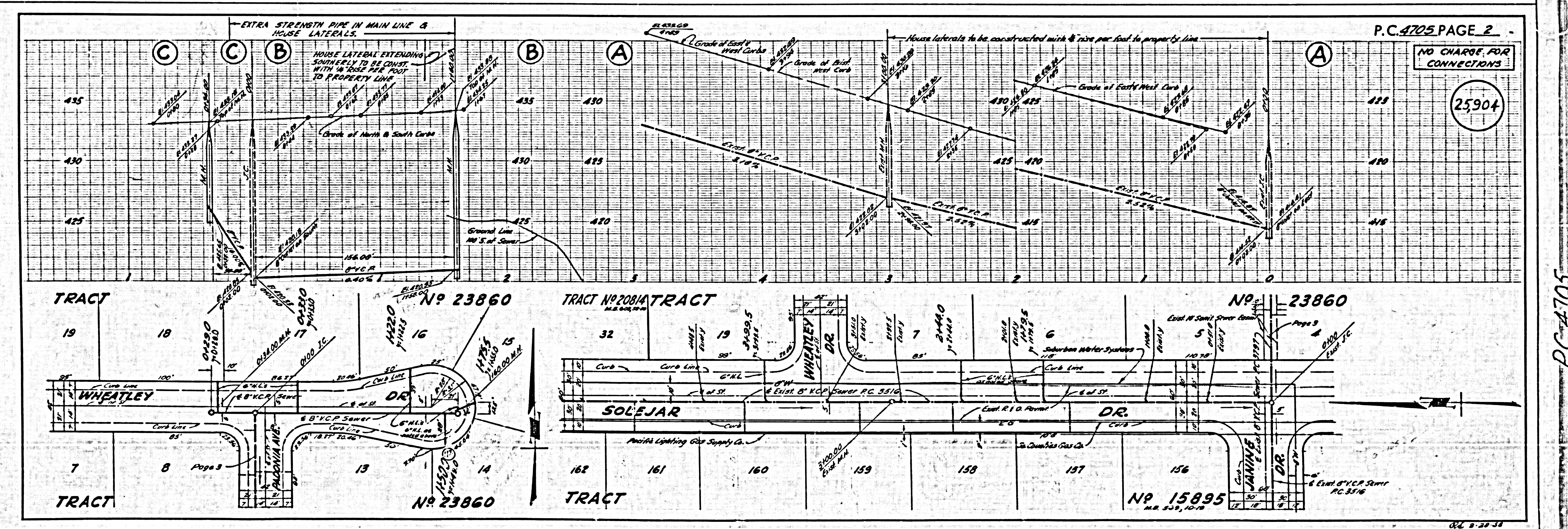
BY *L. Lester*  
 CIVIL ENGINEER

CHECKED BY *S. V. Wade*  
 OFFICE OF COUNTY ENGINEER, REG. C. E. NO. 3405



INDEX MAP  
 TRACT No. 23860  
 SCALE 1"=800'  
 P.C. 4705

LOTS 1 THROUGH 4 SERVED BY EXISTING SEWER-CONSTRUCTED UNDER P.C. 3797



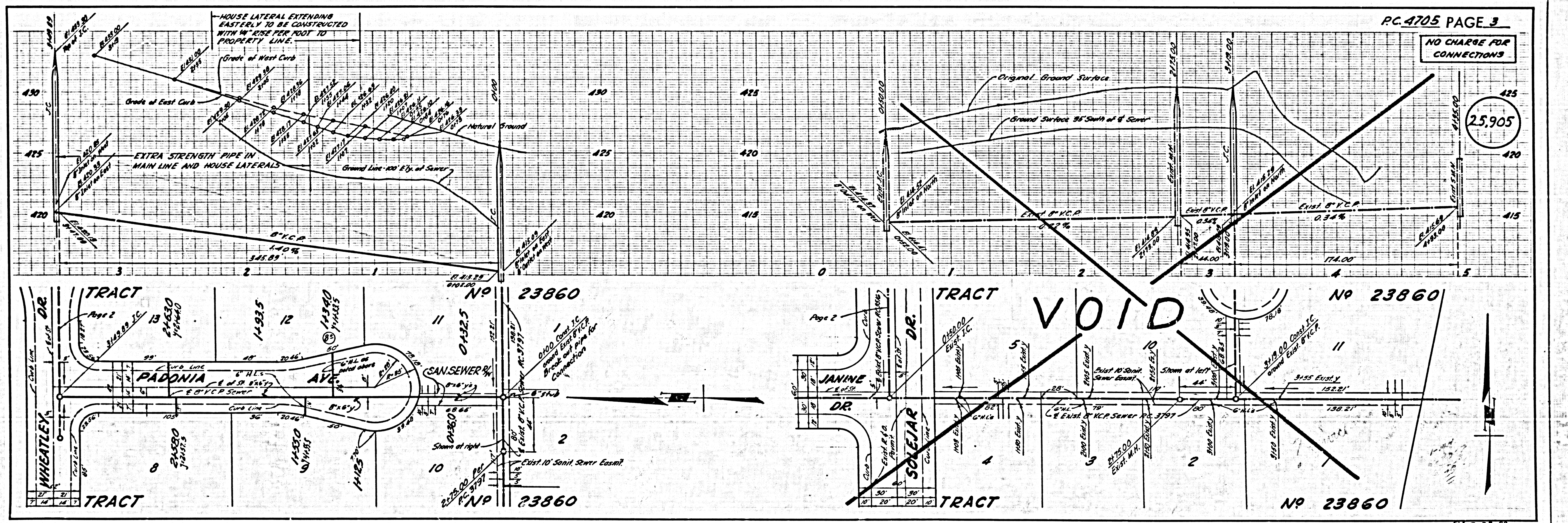
P.C. 4705 PAGE 2

NO CHARGE FOR CONNECTIONS

25,904

P.C. 4705

NO CHARGE FOR CONNECTIONS



25.905

VOID

PC. 4705

TRACT No. S3860