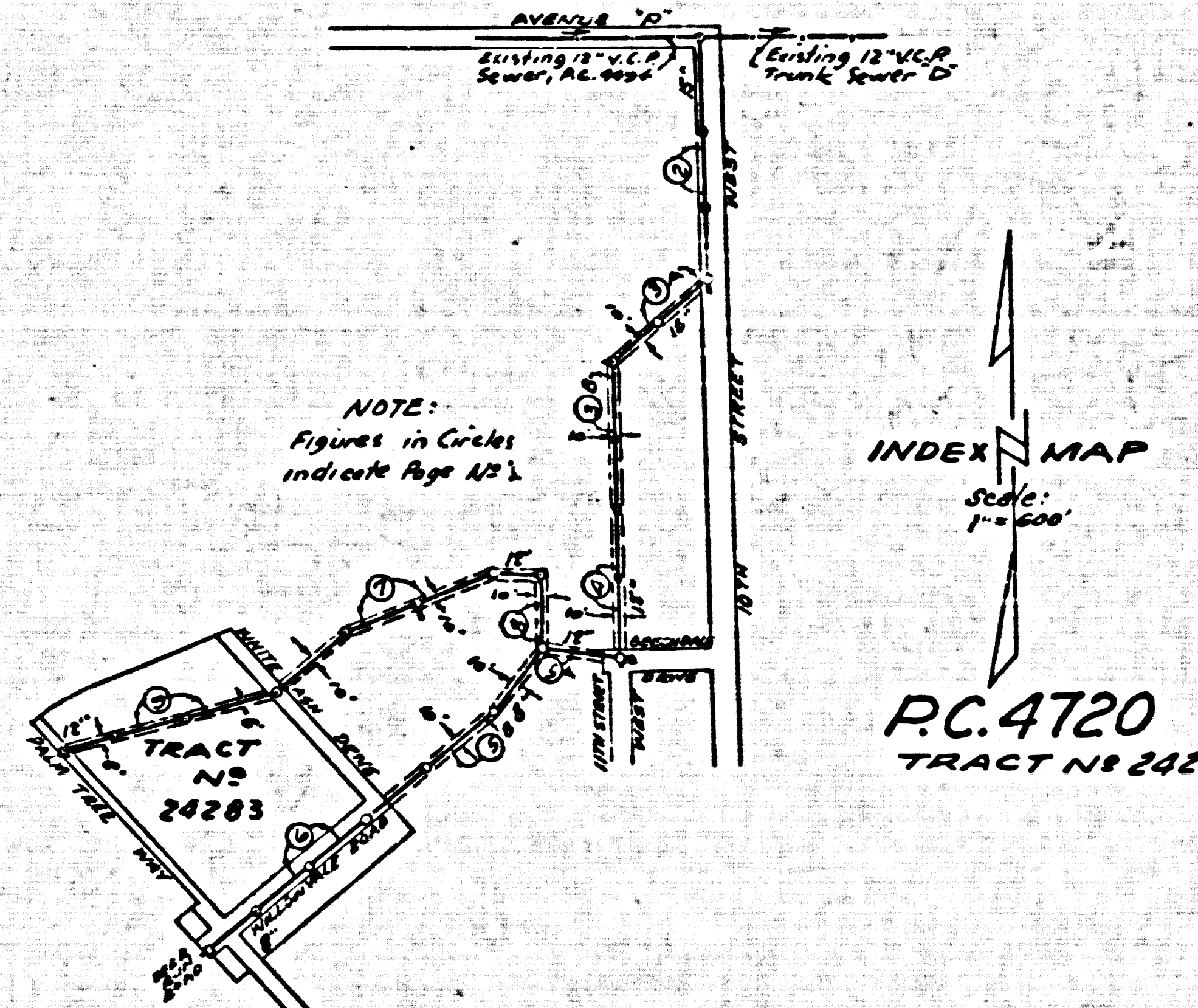


**BENCH MARK:**

U.S.B.M. "L.S. NO 66-1929"  
 LOC. 500' E. OF 10<sup>th</sup> STREET ON  
 AVE. Q ROAD-CANC. MON. WITH  
 BRASS CAP ELEV. 2682.849

**COLLECT CHARGES  
 AS INDICATED  
 2/10/58**



**SOIL CONDITIONS**  
 Most of the soil conditions consisted of sandy silt & loam s.s. with pockets of sand & gravel. One run, P.S. of 800' was thru a strata of highly compacted d.s. or medium hard sandstone. Reading trenches in the loose material was necessary approx. 1/4 the total distance trenched was rodged, with the majority of this taking place about the east end, r.s. 2, 3 & 4. More than minimum shoring was required throughout entire job.

**PALMDALE BLDG. DIST. NO. 81**

- NOTES:**  
 PROVIDE STAKES ON THE PROPERTY LINE OR PROPERTY LINES PRODUCED AT RIGHT ANGLES TO THE SEWER LINE AT THE CENTER LINE OF EACH MANHOLE.  
 NO REPRESENTATIVE OF THE COUNTY ENGINEER WILL SURVEY OR LAYOUT ANY PORTION OF THE WORK.  
 THE OWNER OR HIS AUTHORIZED REPRESENTATIVE SHALL FURNISH THE COUNTY ENGINEER WITH GRADE SHEETS AND STATION FOR ALL HOUSE LATERALS AND Y BRANCHES AND SHALL PROVIDE STAKES FOR THEM AT THEIR PROPER LOCATIONS WITH STATIONING PLAINLY MARKED. ANY CHANGE IN LOCATION SHALL BE REQUESTED IN WRITING BY THE OWNER OR HIS REPRESENTATIVE.  
 NO REVISIONS SHALL BE MADE IN THESE PLANS WITHOUT THE APPROVAL OF THE COUNTY ENGINEER.  
 1. USE STANDARD MANHOLE FRAMES AND COVERS, S.A-117, EXCEPT AS NOTED.  
 2. USE STANDARD STRENGTH PIPE EXCEPT AS NOTED.  
 3. USE CEMENT MORTAR OF "SP-100-250" OR "SPECIAL" JOINTS FOR ALL INTERIOR CLAY PIPE PER SPECS. SEC. 4 & 12.  
 4. SURFACE ALL TRENCH WITHIN PAVED AREA TO MEET L. A. COUNTY ROAD DEPT. OR CALIF. STATE HIGHWAY DEPT. REQUIREMENTS IN ACCORDANCE WITH PERMITS.  
 5. ENCASE FOUR FEET OF SEWER AT POINTS OF INTERFERENCE WITH POLES, S.A-119.  
 6. HOUSE LATERALS TO BE CONSTRUCTED WITH INVERTS AS SHOWN UNLESS OTHERWISE NOTED.  
 7. ALL STRUCTURES SHALL BE IN ACCORD WITH SPECS. S.A-114, EXCEPT AS NOTED.  
 8. FOR ALLOWABLE MESSAGE TEST USE FORMULA NO. 1, SPECS. SEC. 34.  
 9. MANHOLE TOPS IN UNIMPROVED MOUNTS-OF-WAY TO BE 4" ABOVE FINISHED GRADE.  
 10. THE PRIVATE ENGINEER IS TO FURNISH THE HOUSE LATERAL DEPTH AT THE PROPERTY LINE BEYOND THE TOP OF CURB ELEVATION FOR EACH HOUSE LATERAL, ON THE GRADE SHEET.  
 11. SHALL ALL PIPE JOINTS THAT ARE WITHIN 30 FEET OF ANY PROPERTY LINE OR WITHIN ANY SANITARY SEWER 8" W/ WITH 6" OF CEMENT MORTAR, EXCEPT WHEN USING BUREAU-LOCK OR SP-100 JOINTS.  
 12. THE CONTRACTOR SHALL NOTIFY THE CONSTRUCTION AND STORM DRAIN DIVISION BY TELEPHONE, WHITEHALL 2410, EXT. 40 AT LEAST 24 HRS. BEFORE STARTING ANY WORK UNDER THIS CONTRACT.

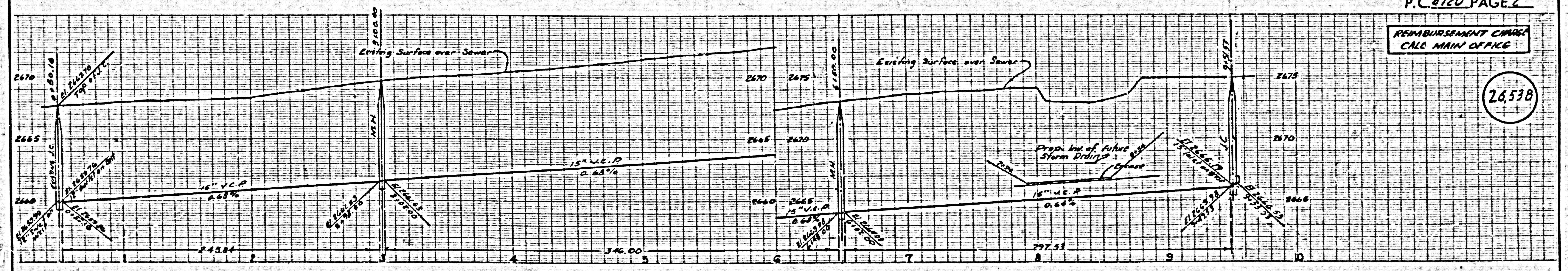
Before breaking into any existing structure and before final acceptance of this work, County Sanitation District should be notified.  
 An order that required inspection may be made.  
 Main Line Sewer 10' 10" S.W. Moved from 34' to 25' West of E. 8-7' H.L.S. added in 10<sup>th</sup> St. W.  
 Revision Approved: *[Signature]* 1/23/58

**PRIVATE CONTRACT NO. 4720**  
 W.S. 64  
 5 SHEETS, 9 PAGES (26,537)  
 SCALE: HORIZ. 1" = 40' VERT. 1" = 4'  
 MARCH, 1958  
 PREPARED IN THE OFFICES OF  
**ROSENTHAL ENGINEERING CO.**  
*[Signature]*  
 REG. C. E. NO. 8205  
 FOR LEGEND SEE PLAN NO. S.A-64

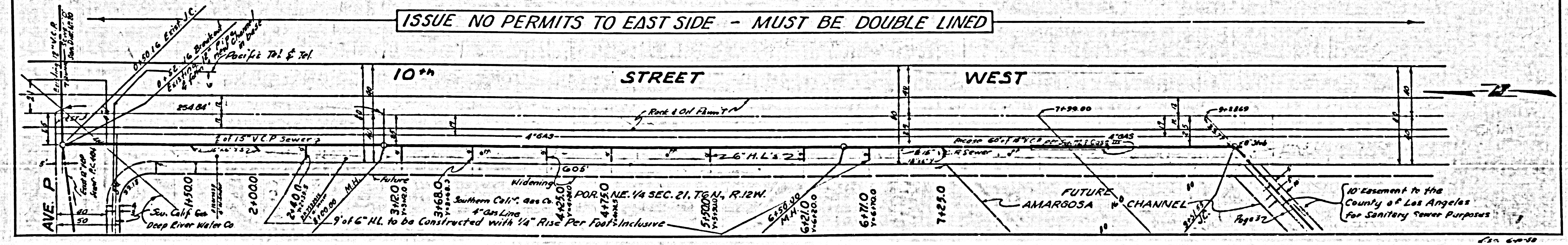
**NOTES:**  
 GRADES TO WHICH THIS IMPROVEMENT IS TO BE CONSTRUCTED ARE SHOWN ON PLANS AND PROFILES. GRADE POINTS FOR TOP OF CURB, CENTER LINE OF STREETS, OR CENTER LINE OF ALLEYS ARE SHOWN BY CIRCLES ON PROFILES AT ALL POINTS BETWEEN DESIGNATED POINTS. THE GRADE SHALL BE ESTABLISHED SO AS TO CONFORM TO A STRAIGHT LINE BETWEEN SAID DESIGNATED POINTS.  
 ELEVATIONS ARE IN FEET ABOVE U.S.C. & G.S. SEA LEVEL DATUM OF 1929.  
 THIS DRAWING AND THE DATA HEREON ARE HEREBY MADE A PART OF THE SPECIFICATIONS.  
 WORK SHALL BE CONSTRUCTED ACCORDING TO SPECIFICATIONS ON FILE IN THE OFFICE OF THE COUNTY ENGINEER AND SHALL BE PROSECUTED ONLY IN THE PRESENCE OF THE COUNTY ENGINEER.  
 BEFORE WORK CAN BE STARTED, THE CONTRACTOR MUST OBTAIN A PERMIT TO EXCAVATE IN COUNTY STREETS FROM THE L. A. COUNTY ROAD DEPT., DIST. OFF. AND MAKE A DEPOSIT WITH THE COUNTY ENGINEER, ROOM 324 PAM AMERICAN BUILDING, 238 SO. BROADWAY, LOS ANGELES, TO COVER THE COST OF CONSTRUCTION INSPECTION AND RECORD PLANS.  
 APPROVAL OF THIS PLAN BY THE COUNTY OF LOS ANGELES DOES NOT CONSTITUTE A REPRESENTATION AS TO THE ACCURACY OF THE LOCATION OF OR THE EXISTENCE OR NON-EXISTENCE OF ANY UNDERGROUND UTILITY PIPE, OR STRUCTURE WITHIN THE LIMITS OF THIS PROJECT. THIS NOTE APPLIES TO ALL PAGES.  
 IF WORK IS TO BE DONE IN A STATE HIGHWAY, A PERMIT MUST BE OBTAINED FROM THE STATE OF CALIFORNIA, DIVISION OF HIGHWAYS, 128 SOUTH BRINING STREET.

**COUNTY OF LOS ANGELES, CALIFORNIA**  
 APPROVED, JOHN A. LAMBE, COUNTY ENGINEER  
 APPROVED, A. M. BAWN, CHIEF ENGINEER  
 CO. SAN. DIST. NO. 20  
 BY *[Signature]* BY *[Signature]*  
 CHECKED BY *[Signature]*  
 OFFICE OF COUNTY ENGINEER, REG. C. E. NO.

REIMBURSEMENT CHARGES  
 CALC. MAIN OFFICE



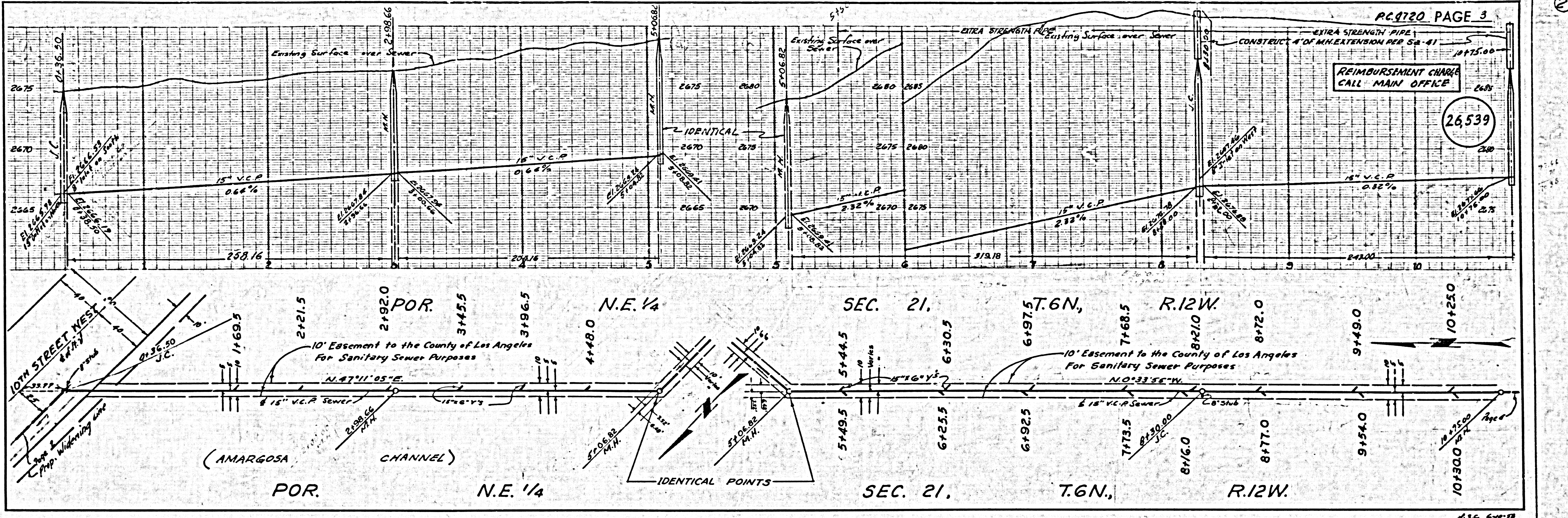
**ISSUE NO PERMITS TO EAST SIDE - MUST BE DOUBLE LINED**



10' easement to the County of Los Angeles for Sanitary Sewer Purposes

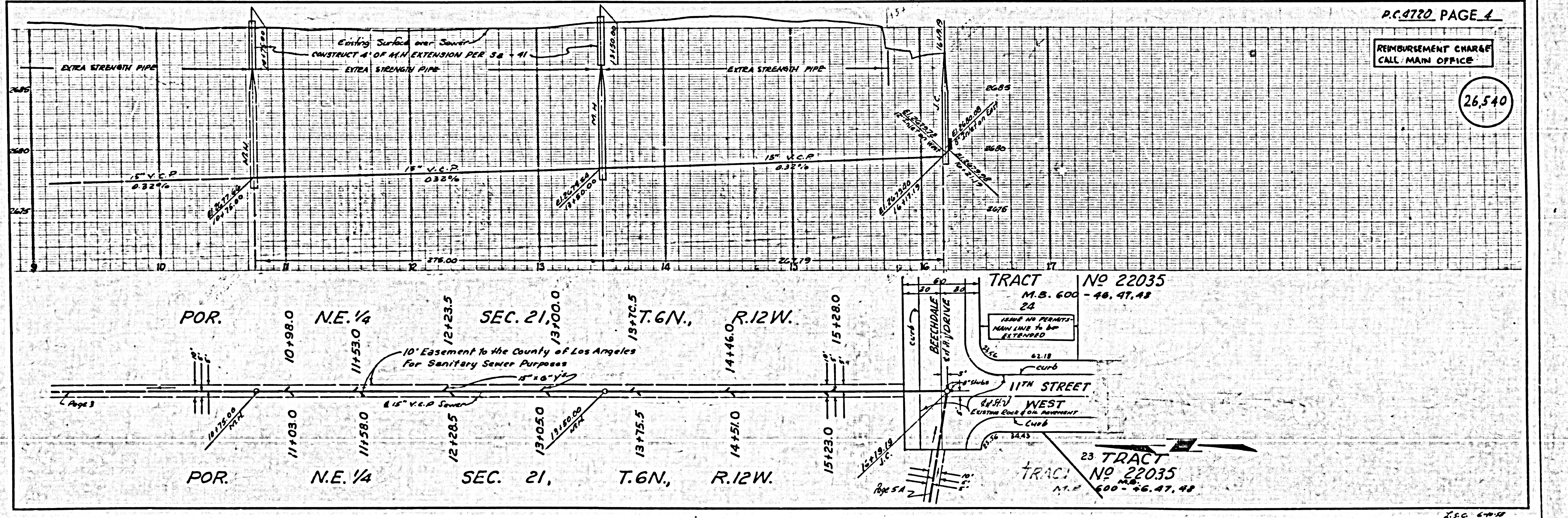
REIMBURSEMENT CHARGE  
CALL MAIN OFFICE

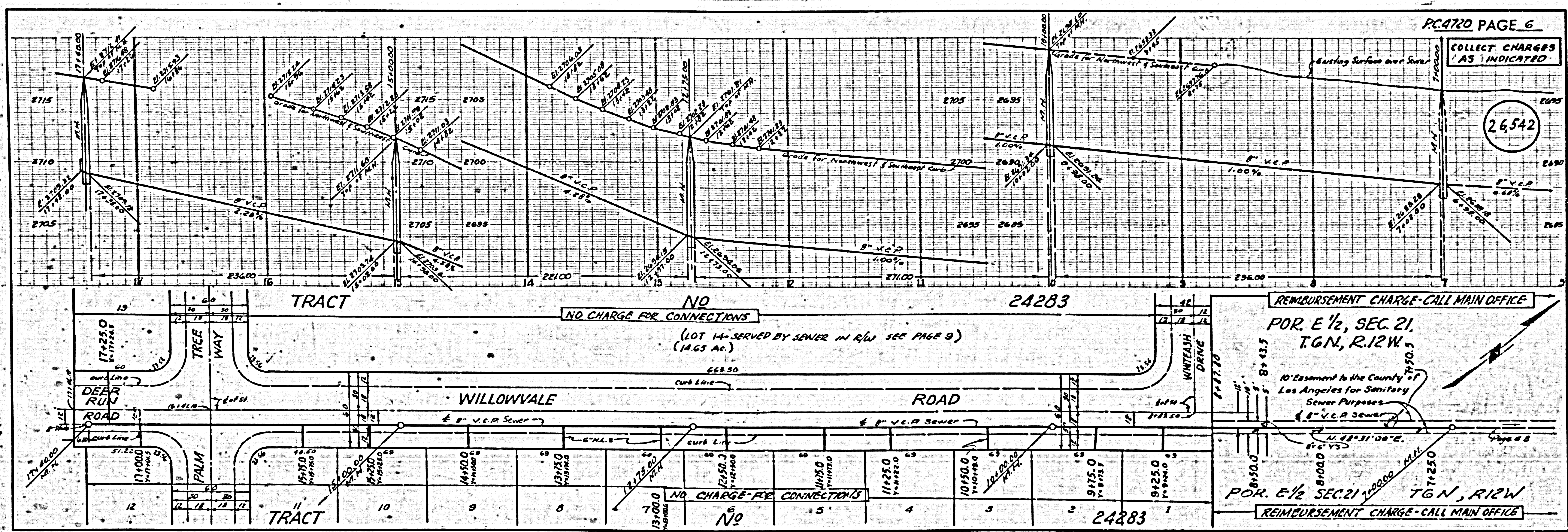
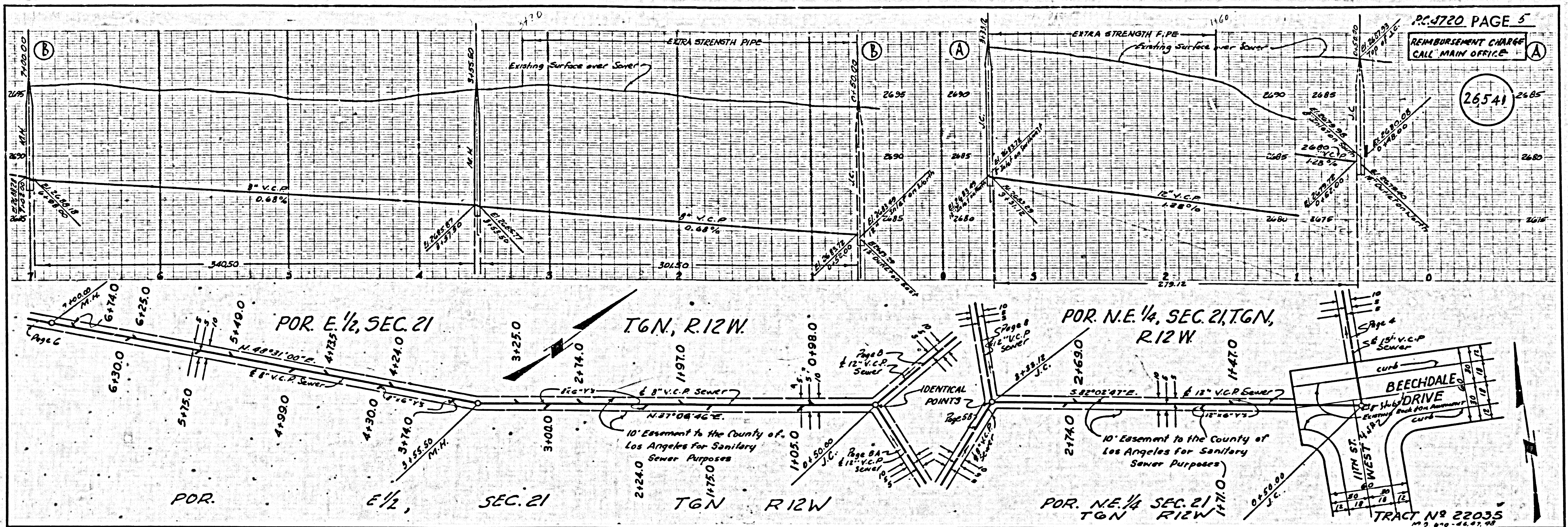
26,539



REIMBURSEMENT CHARGE  
CALL MAIN OFFICE

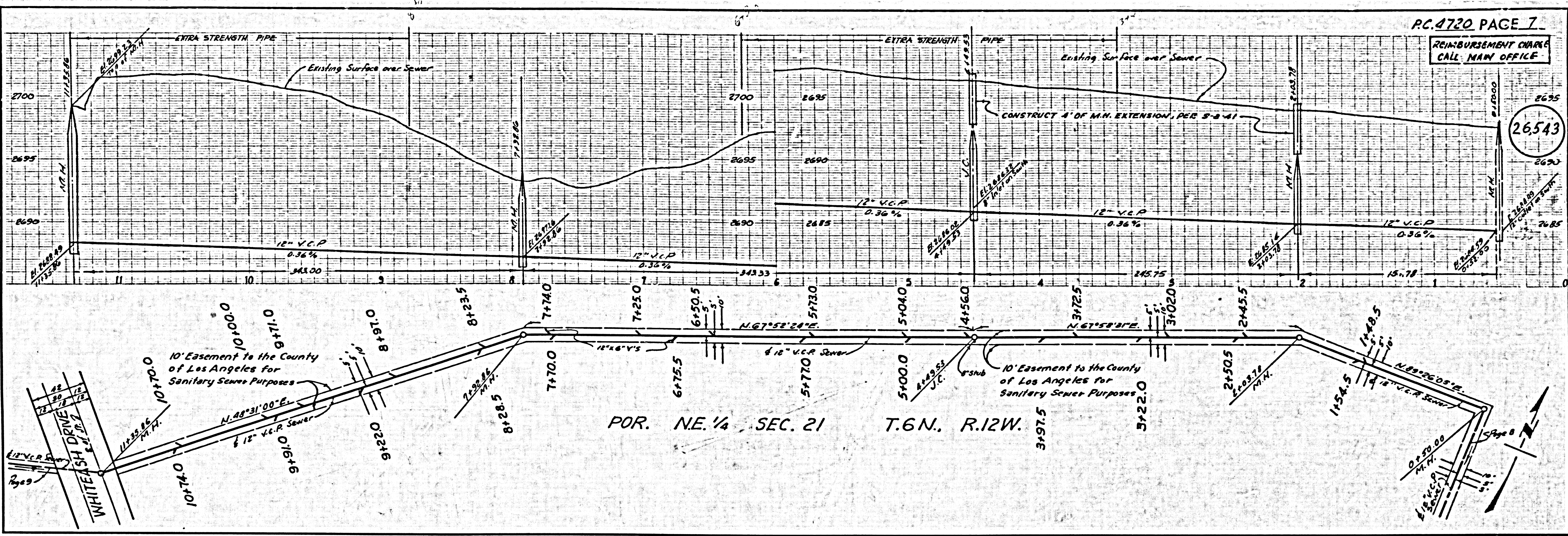
26,540





REIMBURSEMENT CHARGE  
CALL MAIN OFFICE

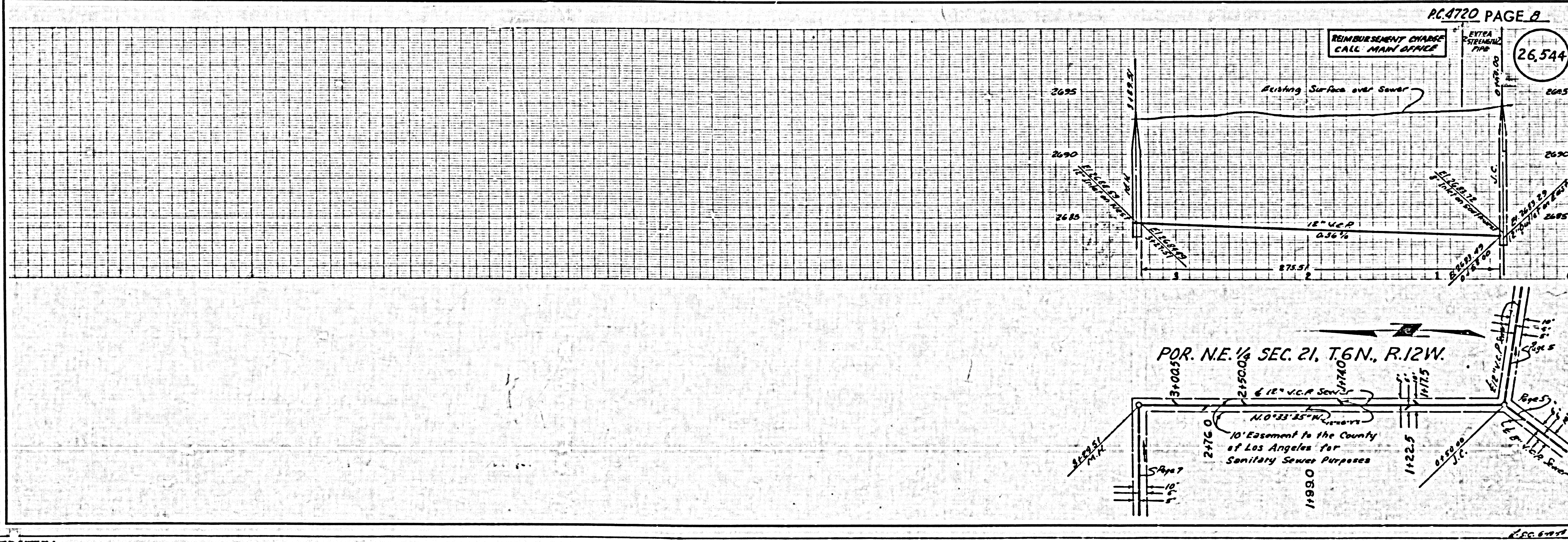
26,543



PC. 6-10-57

REIMBURSEMENT CHARGE  
CALL MAIN OFFICE

26,544



PC. 6-10-57

