

TRACT NO. 24096

PRIVATE CONTRACT NO. 4725

W.S. 25

2 SHEETS, 2 PAGES

25841

SCALE: VERT. 1"=4' HORIZ. 1"=40'

MARCH, 1958

PREPARED IN THE OFFICES OF

GILBERT ENGINEERING CO.

BY: *H. Gilbert* REG. C. E. NO. 1737

FOR LEGEND SEE PLAN NO. S-A-64

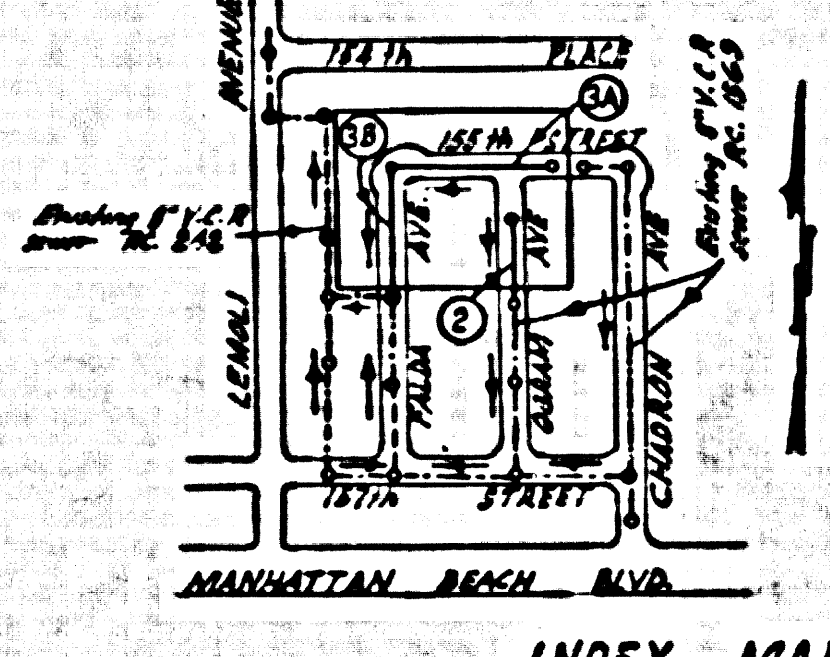
Bench Mark #22-2 Crosshaw Blvd and Manhattan Beach Blvd.  
S.W. corner 38.50 West of the E. of Crosshaw Blvd. 48.80 South  
of the E. of Manhattan Beach Blvd. 1.25 back of curb in a  
wall with cast iron top marked County Surveyors Monument,  
Stamped B.M. 22-2-1952 R.E. 63  
Elevation 45.790 1353 Adj. Elev. Field Book 1325-7

- NOTE
- PROVIDE STAKES ON THE PROPERTY LINE OR PROPERTY LINES PRODUCED AT RIGHT ANGLES TO THE SEWER LINE AT THE CENTER LINE OF EACH MANHOLE.
  - NO REPRESENTATIVE OF THE COUNTY ENGINEER WILL SURVEY OR LAYOUT ANY PORTION OF THE WORK.
  - THE OWNER OR HIS AUTHORIZED REPRESENTATIVE SHALL FURNISH THE COUNTY ENGINEER WITH GRADE SHEETS AND STATIONING FOR ALL HOUSE LATERALS AND Y BRANCHES AND PROVIDE STAKES FOR THEM AT THEIR PROPER LOCATIONS WITH STATIONING PLAINLY MARKED. ANY CHANGE IN LOCATION SHALL BE REQUESTED IN WRITING BY THE OWNER OR HIS REPRESENTATIVE.
  - NO REVISIONS SHALL BE MADE IN THESE PLANS WITHOUT THE APPROVAL OF THE COUNTY ENGINEER.
  - USE STANDARD MANHOLE FRAMES AND COVERS, S-A-117, EXCEPT AS NOTED.
  - USE STANDARD STRENGTH PIPE EXCEPT AS NOTED.
  - USE CEMENT MORTAR, REDUCE LIPS, OR ENJOINED JOINT FOR ALL U.C.A. JOINTS PER SPEC. SECT. 36/46
  - REINFORCE ALL TRENCH WITHIN PAVED AREA TO MEET L. A. COUNTY ROAD DEPT. OR CALIF. STATE HIGHWAY DEPT. REQUIREMENTS IN ACCORDANCE WITH PERMITS.
  - ENCASE FOUR FEET OF SEWER AT POINTS OF INTERFERENCE WITH POLES, CASE II, S-1-17E.
  - HOUSE LATERALS TO BE CONSTRUCTED WITH INVERTS AT PROPERTY LINE 6 FEET BELOW CURB GRADE EXCEPT AS NOTED.
  - ALL STRUCTURES SHALL BE BRICK SEWER STRUCTURES, S-A-184, EXCEPT AS NOTED.
  - FOR ALLOWABLE LEAKAGE TEST USE FORMULA NO. 1 SPEC. SEC. 64
  - MANHOLE TOPS IN UNIMPROVED PORTS-OF-WAY TO BE 6" ABOVE FINISHED GRADE.
  - THE PRIVATE ENGINEER SHALL FURNISH THE HOUSE LATERAL SECTION AT THE PROPERTY LINE BELOW THE TOP OF CURB ELEVATION FOR EACH HOUSE LATERAL ON THE GRANT SHEET

THE CONTRACTOR SHALL NOTIFY THE CONSTRUCTION STORM DRAIN DIVISION BY TELEPHONE, MADISON 34747 EXT. 362 AT LEAST 24 HRS. BEFORE STARTING ANY WORK UNDER THIS CONTRACT

NO CHARGE FOR CONNECTIONS  
*L. Gilbert 3-18-58*

Lot 1 is served in a san sewer 7/4 by a sewer constructed under R.C. 1529



INDEX MAP  
Scale - 1"=600'  
TRACT No 24096  
R.E. 4725

NOTE  
GRADES TO WHICH THIS IMPROVEMENT IS TO BE CONSTRUCTED ARE SHOWN ON PLANS AND PROFILES. GRADE POINTS FOR TOP OF CURBS, CENTER LINE OF STREETS OR CENTER LINE OF ALLEYS ARE SHOWN BY CIRCLES ON PROFILES. AT ALL POINTS BETWEEN DESIGNATED POINTS THE GRADE SHALL BE ESTABLISHED SO AS TO CONFORM TO A STRAIGHT LINE DRAWN BETWEEN SAID DESIGNATED POINTS.  
ELEVATIONS ARE IN FEET ABOVE U.S.C. & G.S. MEAN SEA LEVEL DATUM OF 1929  
THIS DRAWING AND THE DATA HEREON ARE HEREBY MADE A PART OF THE SPECIFICATIONS.  
WORK SHALL BE CONSTRUCTED ACCORDING TO SPECIFICATIONS ON FILE IN THE OFFICE OF THE COUNTY ENGINEER AND SHALL BE PROSECUTED ONLY IN THE PRESENCE OF THE COUNTY ENGINEER.  
BEFORE WORK CAN BE STARTED, THE CONTRACTOR MUST OBTAIN A PERMIT TO OCCUPY IN COUNTY STREETS FROM THE L. A. COUNTY ROAD DEPT. 108 W. 2ND ST. AND MAKE A DEPOSIT WITH THE COUNTY ENGINEER, ROOM 204 PAV. AMERICAN BLDG. 255 S. HOUGHWAY AVENUE TO COVER THE COST OF CONSTRUCTION INSPECTION AND RECORD PLANS.  
APPROVAL OF THIS PLAN BY THE COUNTY OF LOS ANGELES DOES NOT CONSTITUTE A REPRESENTATION AS TO THE ACCURACY OF THE LOCATION OF OR THE EXISTENCE OR NON-EXISTENCE OF ANY UNDERGROUND UTILITY PIPE OR STRUCTURE WITHIN THE LIMITS OF THIS PROJECT. THIS NOTE APPLIES TO ALL PAGES.  
IF WORK IS TO BE DONE IN A STATE HIGHWAY, A PERMIT MUST BE OBTAINED FROM THE STATE OF CALIFORNIA, DIVISION OF HIGHWAYS, 120 SOUTH SPRING STREET.

COUNTY OF LOS ANGELES, CALIFORNIA

APPROVED, JOHN A. LAMME, COUNTY ENGINEER

APPROVED, A. M. BAWN, CHIEF ENGINEER

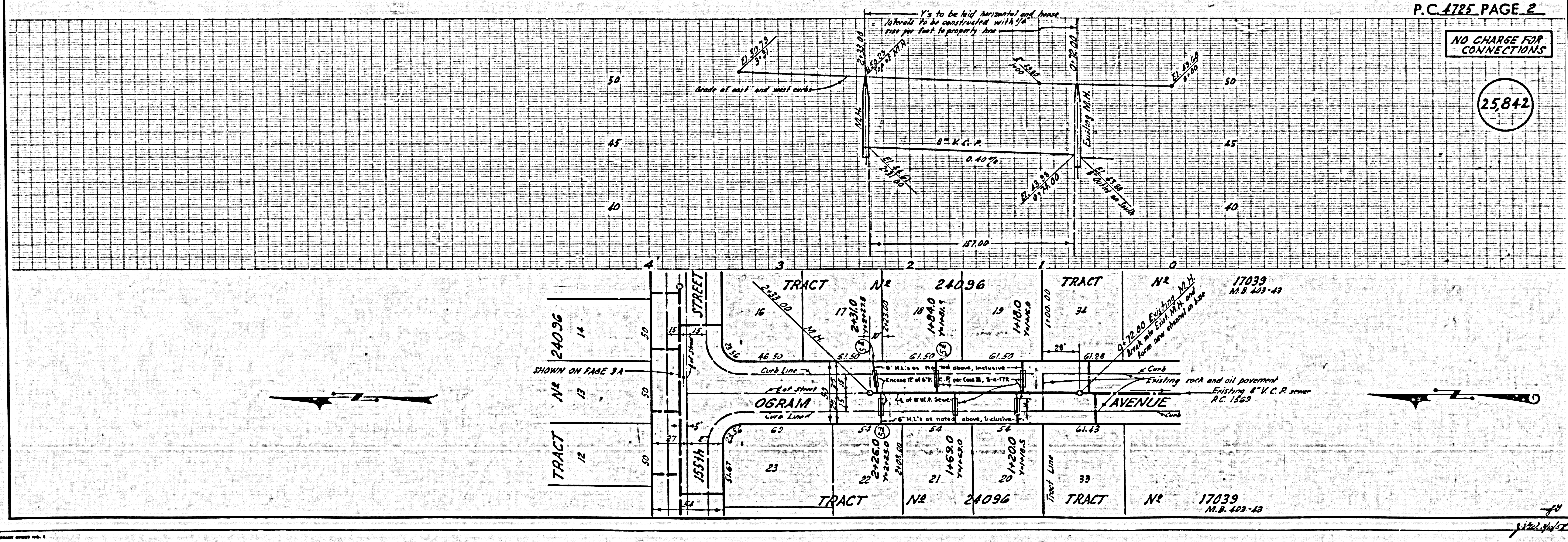
BY: *L. Gilbert* SANITARY ENGINEER

BY: *A. M. Bawn* OFFICE ENGINEER

CHECKED BY: *S. K. Wicks*  
OFFICE OF COUNTY ENGINEER, REG. C. E. NO. 2456

NO CHARGE FOR CONNECTIONS

25842



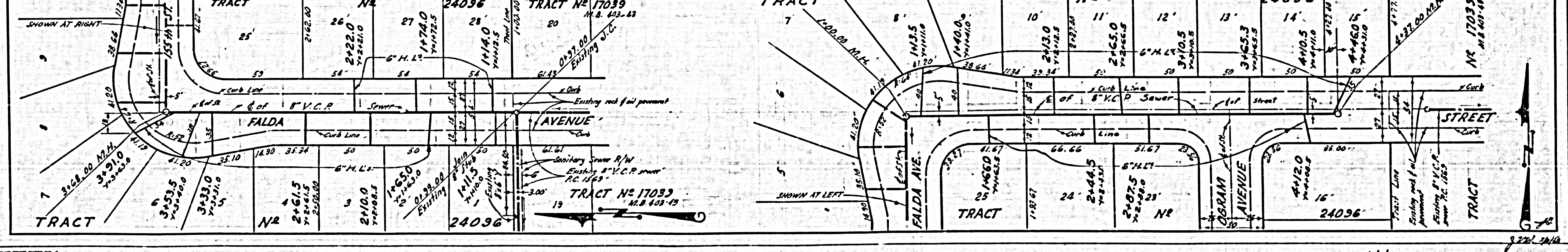
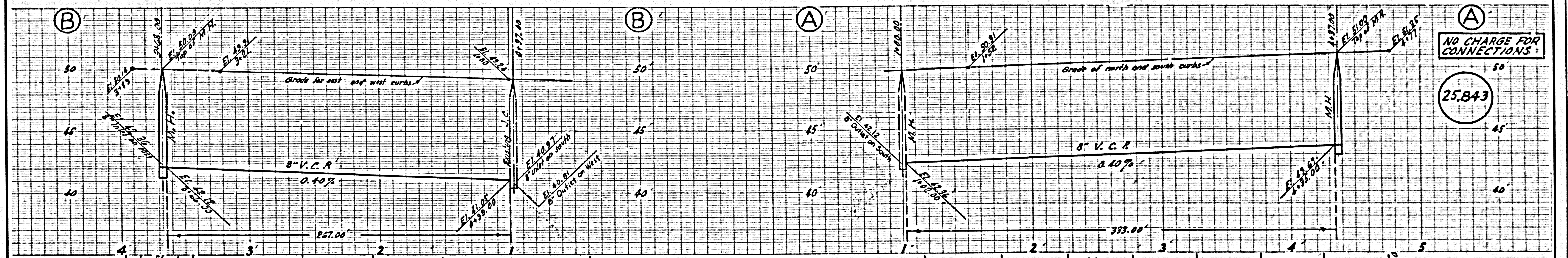
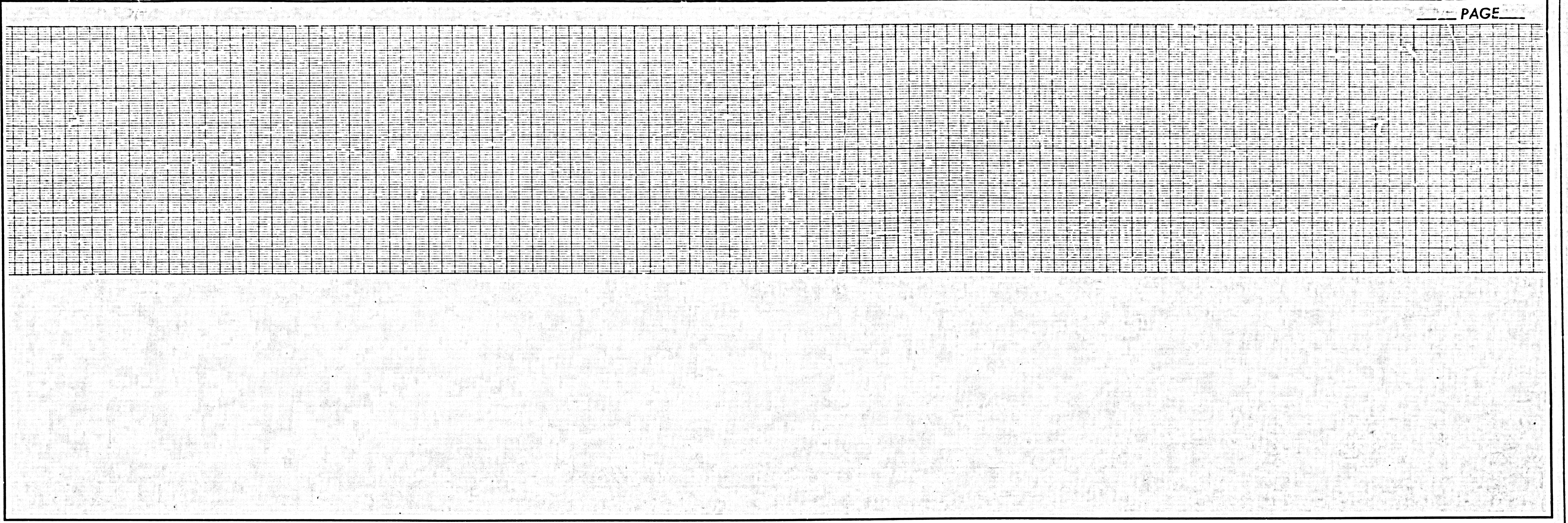
P.C. 4725

P.C. 4725

MH

3/22/58





NO CHARGE FOR CONNECTIONS

25,843

P.C. 4725

© ESTA .J.R

MH