

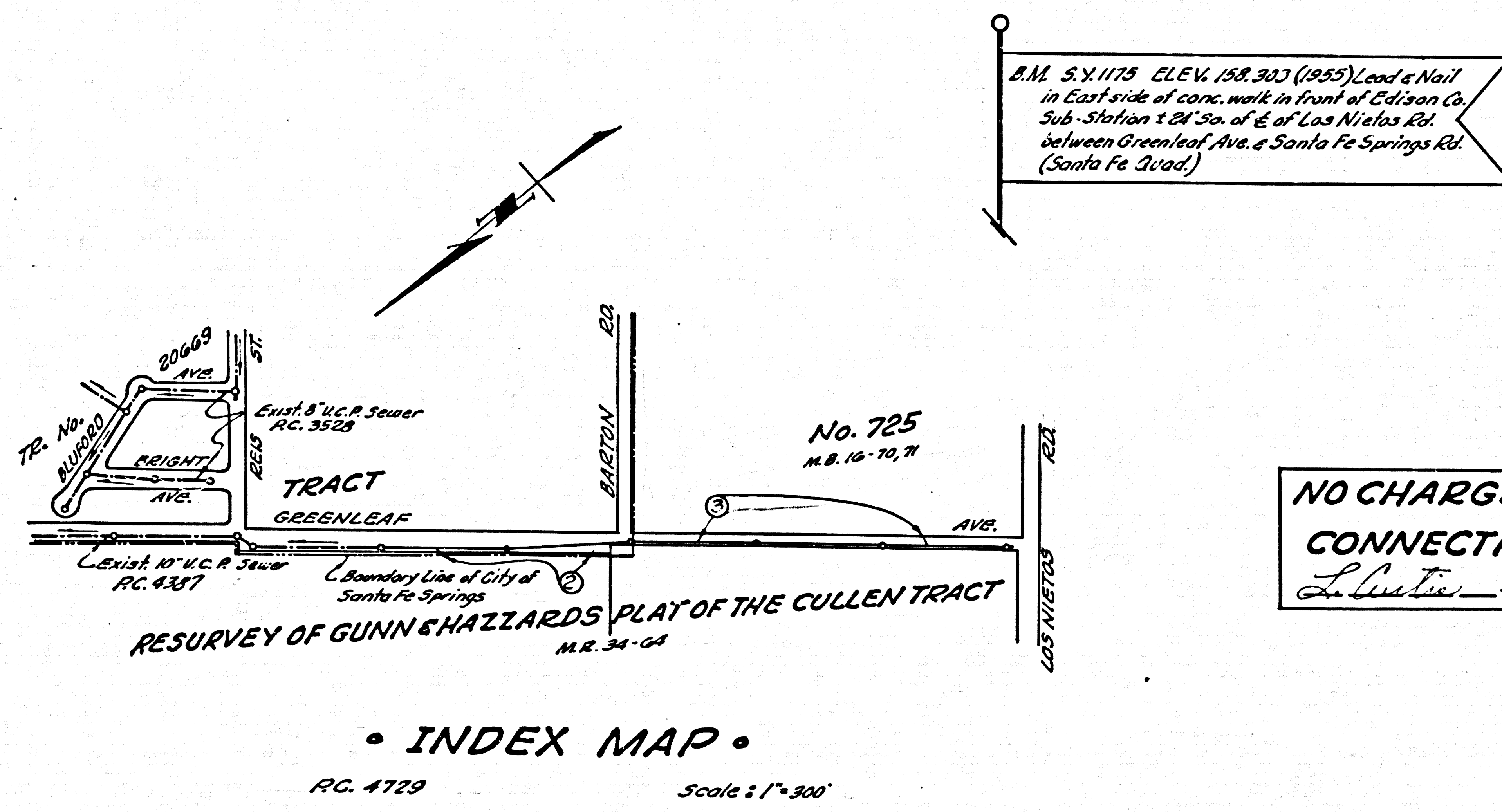
SANTA FE SPRINGS BLDG. DIST. NO. 4.05
 SANITARY SEWERS
 CONSTRUCTED IN
GREENLEAF AVE.

J.N. 0480.06
 P.C. 4729
 PAGE 1

PRIVATE CONTRACT NO. 4729
 W.S. 34
 2 SHEETS, 3 PAGES

SCALE: VERT. 1"=4'
 HORIZ. 1"=40'
 MAR. 1958
 PREPARED IN THE OFFICES OF
KEMMERER ENGINEERING CO., INC.
 REG. C. E. NO. 8224

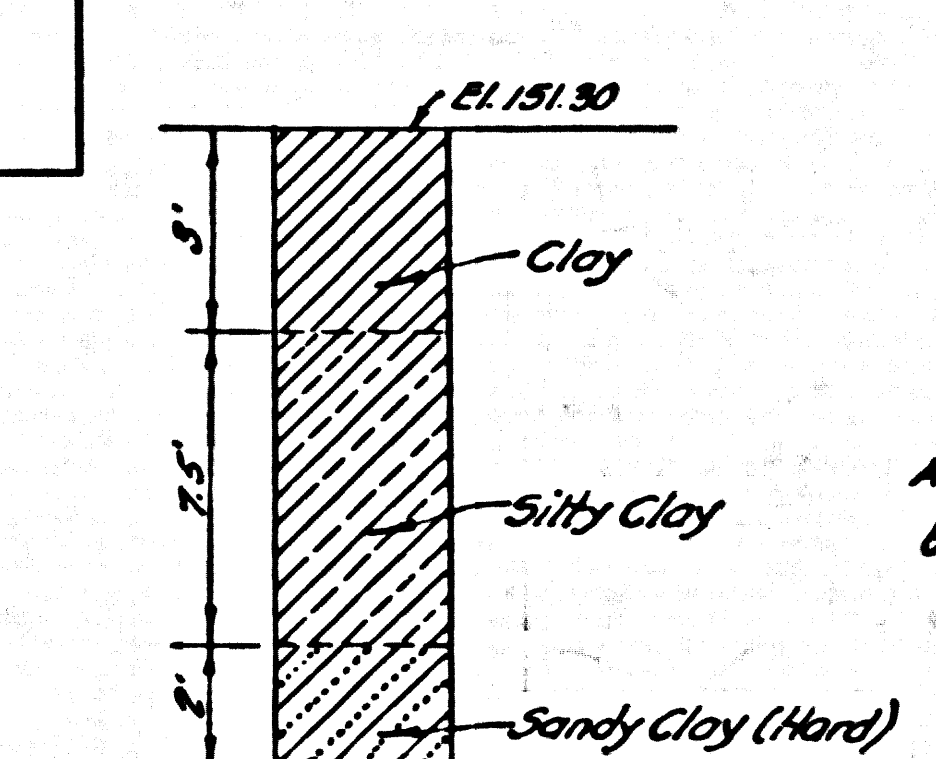
FOR LEGEND SEE PLAN NO. S-A-64



B.M. S.Y. 1175 ELEV. 158.303 (1955) Lead & Nail
 in East side of conc. walk in front of Edison Co.
 Sub-Station 8 2 1/2' So. of E. of Los Nietos Rd.
 between Greenleaf Ave. & Santa Fe Springs Rd.
 (Santa Fe Blvd.)

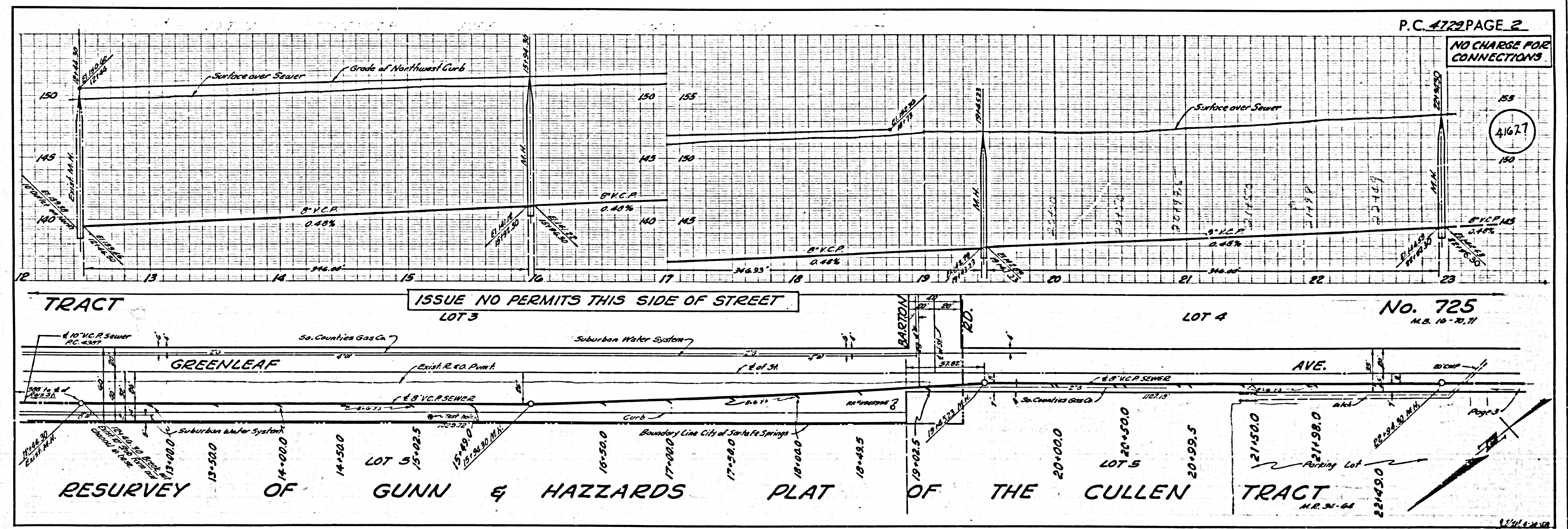
NO CHARGE FOR CONNECTIONS
 L. C. Curtis 5-2-58

NOTE:
 THE CONTRACTOR SHALL NOTIFY THE CONSTRUCTION AND
 STORM DRAIN DIVISION BY TELEPHONE MADISON 9-4747
 EXT. 362 AT LEAST 24 HOURS BEFORE STARTING ANY WORK
 UNDER THIS CONTRACT.



APPROVED, JOHN A. LAMBIE, COUNTY ENGINEER
 BY *J. A. Lambie*
 SANITATION ENGINEER

CITY OF SANTA FE SPRINGS, CALIFORNIA
 APPROVED, JOHN A. LAMBIE, CITY ENGINEER
 APPROVED, A. M. BAWN, CHIEF ENGINEER
 BY *A. M. Bawn*
 OFFICE ENGINEER
 CHECKED BY *R. K. Onda 5-2-58*
 OFFICE OF CITY ENGINEER, REG. C. E. NO. 3406



P.C. 4729 PAGE 2

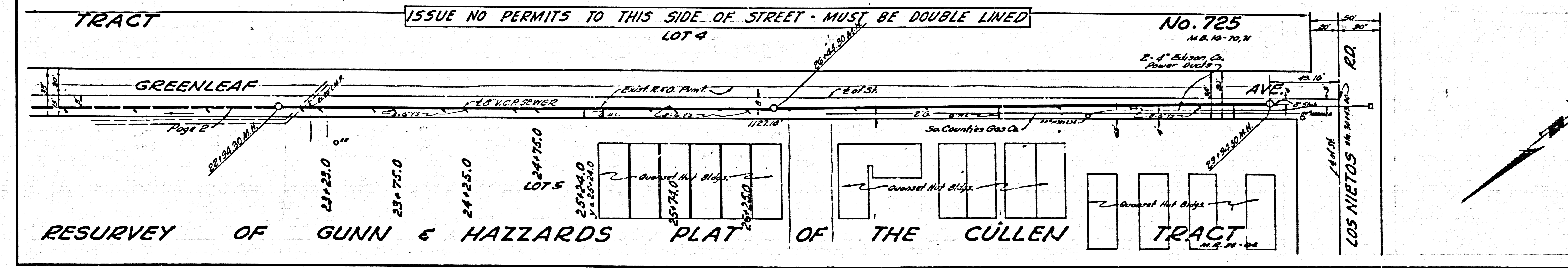
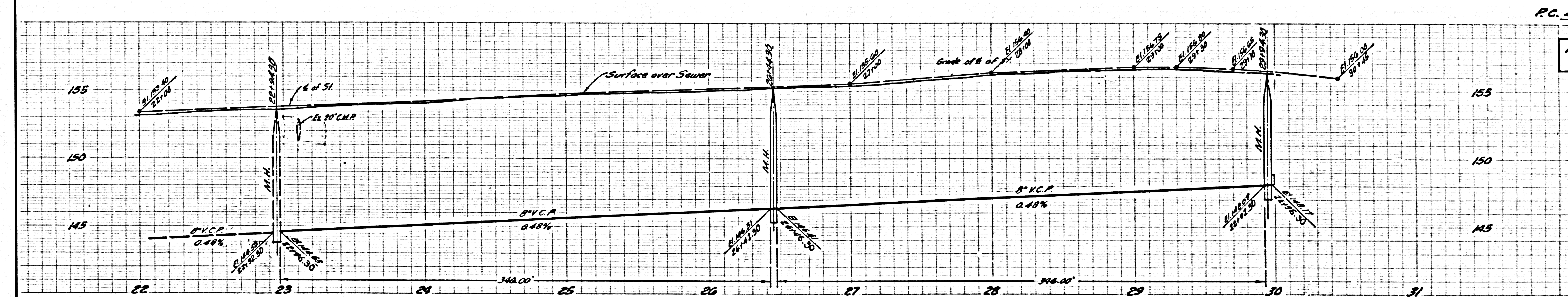
NO CHARGE FOR CONNECTIONS

41627

No. 725
 M.B. 10-70-71

NO CHARGE FOR CONNECTIONS

41628



RESURVEY OF GUNN & HAZZARDS PLAT OF THE CULLEN TRACT

ISSUE NO PERMITS TO THIS SIDE OF STREET - MUST BE DOUBLE LINED

No. 725 M.B. 10-70, 71

11/11/52