

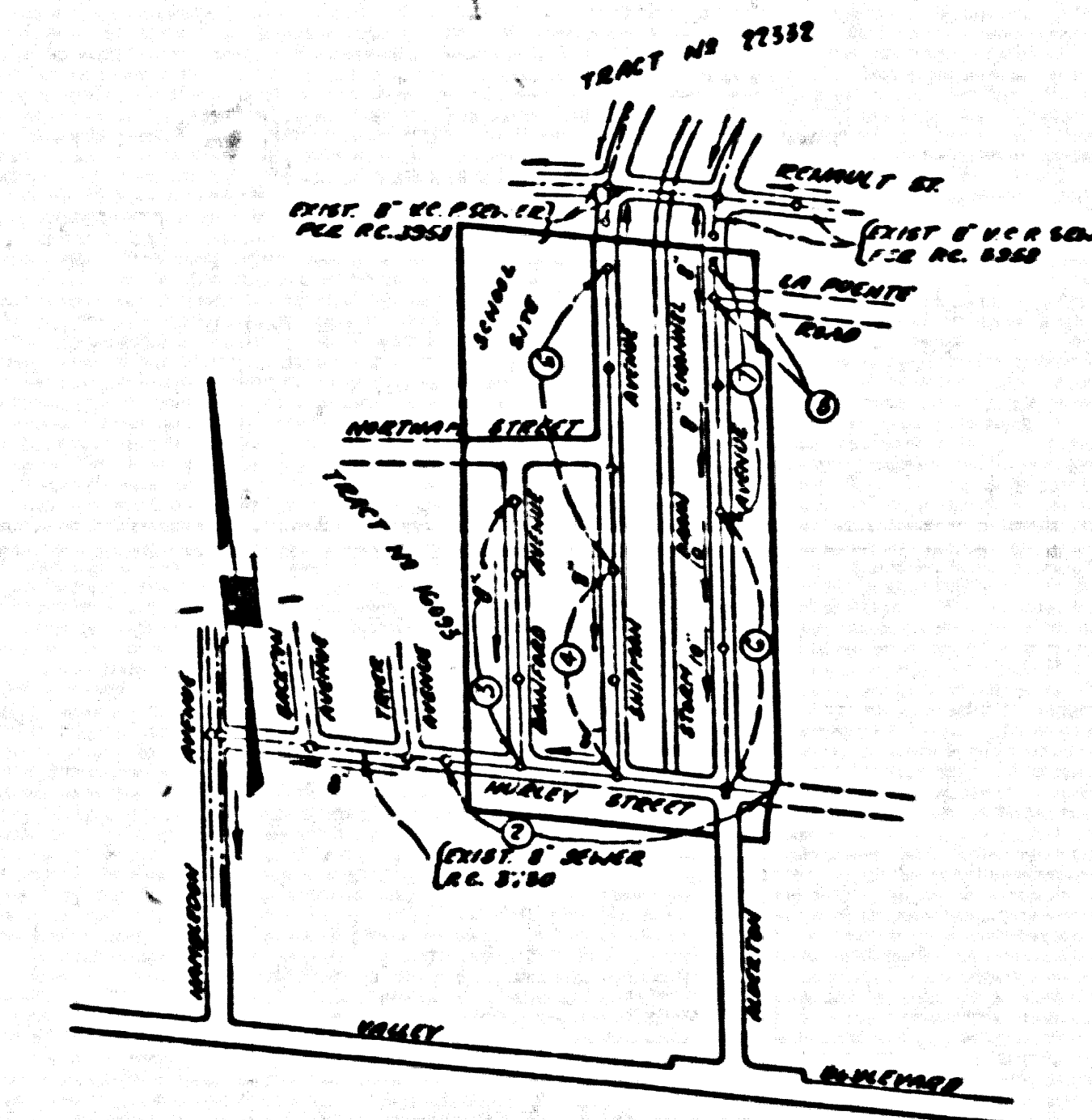
PUENTE BLDG. DIST. NO. 2

PROFILE ALIGNMENT AND GRADE OF P.C. 4734
 SANITARY SEWERS PAGE 1
 TO BE CONSTRUCTED IN
 TRACT No 24448 (26051)

PRIVATE CONTRACT NO. 4734

W.S. 38
 4 SHEETS, 8 PAGES
 SCALE: VERT. 1"=4' HORIZ. 1"=40'
 MARCH, 1958
 PREPARED BY THE OFFICES OF
 NATIONAL ENGINEERING CO.

BY: *Edward J. Emerson*
 REG. C.E. NO. 5278
 FOR LEGEND SEE PLAN NO. S-A-64



KEY MAP
 TRACT NO 24448
 P.C. 4734
 SCALE 1"=400'

- NOTES
- PROVIDE STAKES ON THE PROPERTY LINE OR PROPERTY LINES PRODUCED AT RIGHT ANGLES TO THE SEWER LINE AT THE CENTER LINE OF EACH MANHOLE.
 - NO REPRESENTATIVE OF THE COUNTY ENGINEER WILL SURVEY OR LAYOUT ANY PORTION OF THE WORK.
 - THE OWNER OR HIS AUTHORIZED REPRESENTATIVE SHALL FURNISH THE COUNTY ENGINEER WITH 6" X 6" SHEETS AND STATION FOR ALL HOUSE LATERALS AND Y BRANCHES AND SHALL PROVIDE STAKES FOR THEM AT THEIR PROPER LOCATIONS WITH STATIONING PLAINLY MARKED. ANY CHANGE IN LOCATION SHALL BE REQUESTED IN WRITING BY THE OWNER OR HIS REPRESENTATIVE.
 - NO REVISIONS SHALL BE MADE IN THESE PLANS WITHOUT THE APPROVAL OF THE COUNTY ENGINEER.
 - USE STANDARD MANHOLE PLANS AND COVERS, S-A-117, EXCEPT AS NOTED.
 - USE STANDARD STRENGTH PIPE EXCEPT AS NOTED.
 - USE CAMBRIE JOINTS AS "WEDGE-LOCK" OR "SERVED-SEAL" FOR ALL VITRIFIED CLAY PIPE JOINTS PER SPEC. SEC. 50 G & H.
 - REINFORCE ALL TRENCH WITHIN PAYEE AREA TO MEET L. A. COUNTY ROAD DEPT. OR CALIF. STATE HIGHWAY DEPT. REQUIREMENTS IN ACCORDANCE WITH PERMITS.
 - ENCASE FOUR FEET OF SEWER AT POINTS OF INTERFERENCE WITH POLES, S-A-172 CASE III.
 - HOUSE LATERALS TO BE CONSTRUCTED WITH INVERTS AT PROPERTY LINE C FEET BELOW CURB GRADE EXCEPT AS NOTED.
 - ALL STRUCTURES SHALL BE BRICK SEWER STRUCTURES, S-A-184, EXCEPT AS NOTED.
 - FOR ALLOWABLE LEAKAGE TEST USE FORMULA NO. 1, SPEC. S, SEC. 66.
 - MANHOLE TOPS IN UNIMPROVED RIGHTS-OF-WAY TO BE 6" ABOVE FINISHED GRADE.
 - THE PRIVATE ENGINEER IS TO FURNISH THE HOUSE LATERAL TOPS AT THE PROPERTY LINE BELOW THE TOP OF CURB EXCEPT FOR EACH HOUSE LATERAL ON THE GRADE STREET.
 - THE CONTRACTOR SHALL NOTIFY THE CONSTRUCTION AND STORM DRAIN DIVISION BY TELEPHONE MADISON 9-6742, SIX SEVEN AT LEAST 24 HOURS BEFORE STARTING ANY WORK UNDER THIS CONTRACT.

NO CHARGE FOR CONNECTIONS
 L. Carter 4-7-58

BENCH MARK: 56 1379
 L.E.B. nail in center of curb
 return of service road 151/2' to
 Sprague Street 1/4' East of centerline
 of Pass and Covina Road.
 ELEV. 435.165

NOTES

GRADES TO WHICH THIS IMPROVEMENT IS TO BE CONSTRUCTED ARE SHOWN ON PLANS AND PROFILE. GRADE POINTS FOR TOP OF CURB, CENTER LINE OF STREETS, OR CENTER LINE OF ALLEYS ARE SHOWN BY CIRCLES ON PROFILES. AT ALL POINTS BETWEEN DESIGNATED POINTS THE GRADE SHALL BE ESTABLISHED SO AS TO CONFORM TO A STRAIGHT LINE DRAWN BETWEEN SAID DESIGNATED POINTS.

ELEVATIONS ARE IN FEET ABOVE U.S.C. 1929 LEVEL DATUM OF 1929.

THIS DRAWING AND THE DATA HEREON ARE HEREBY MADE A PART OF THE SPECIFICATIONS.

WORK SHALL BE CONSTRUCTED ACCORDING TO SPECIFICATIONS ON FILE IN THE OFFICE OF THE COUNTY ENGINEER AND SHALL BE PROSECUTED ONLY IN THE PRESENCE OF THE COUNTY ENGINEER.

BEFORE WORK CAN BE STARTED, THE CONTRACTOR MUST OBTAIN A PERMIT TO EXCAVATE IN COUNTY STREETS FROM THE L. A. COUNTY ROAD DEPT. FOR 1/2" AND SHALL DEPOSIT WITH THE COUNTY ENGINEER, ROOM 324 PALM AVENUE, BUREAU, 250 S.O. BROADWAY SUFFICIENT TO COVER THE COST OF CONSTRUCTION INSPECTION AND RECORD PLANS.

APPROVAL OF THIS PLAN BY THE COUNTY OF LOS ANGELES DOES NOT CONSTITUTE A REPRESENTATION AS TO THE ACCURACY OF THE LOCATION OF OR THE EXISTENCE OR NON-EXISTENCE OF ANY UNDERGROUND UTILITY PIPE, OR STRUCTURE WITHIN THE LIMITS OF THIS PROJECT. THIS NOTE APPLIES TO ALL PAGES.

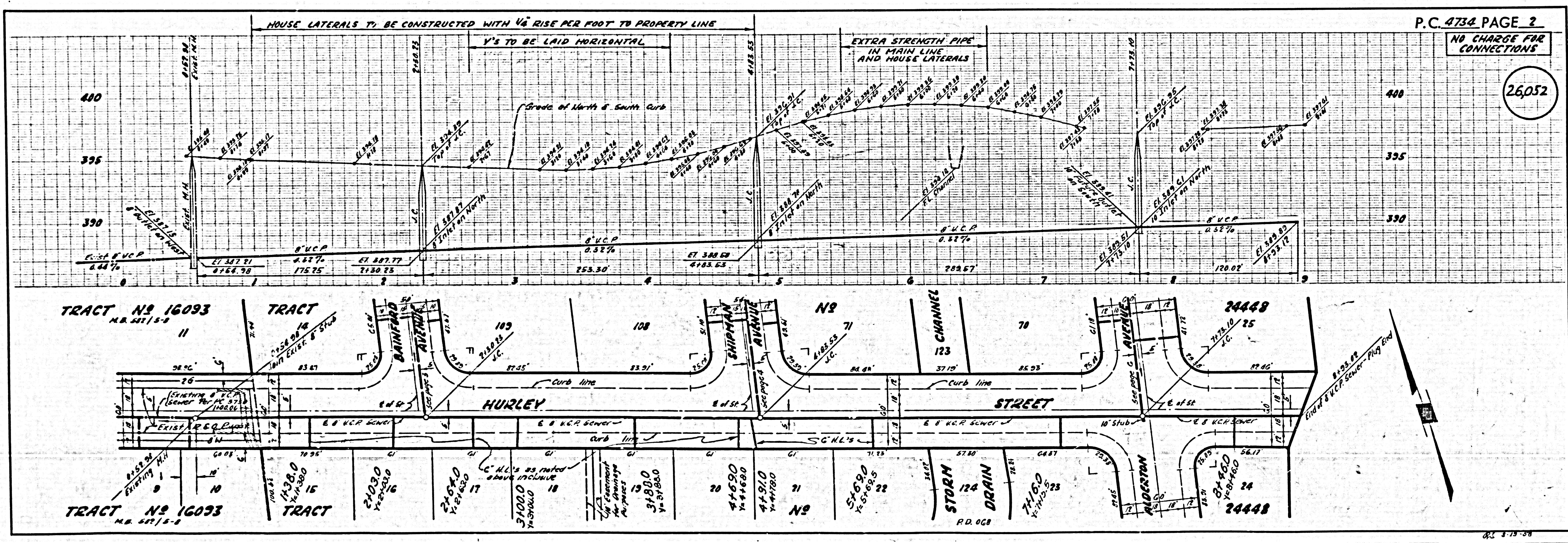
IF WORK IS TO BE DONE IN A STATE HIGHWAY, A PERMIT MUST BE OBTAINED FROM THE STATE OF CALIFORNIA, DIVISION OF HIGHWAYS, 138 SOUTH SPRING STREET.

COUNTY OF LOS ANGELES, CALIFORNIA

APPROVED, JOHN A. LAMBE, COUNTY ENGINEER
 APPROVED, A. M. BAWN, CHIEF ENGINEER
 CO. SEAL NO. 27

BY: *J. A. Hughes* BY: *E. P. Bennett*
 SANITATION ENGINEER OFFICE ENGINEER

CHECKED BY: *J. C. O'Neil*
 OFFICE OF COUNTY ENGINEER, BLDG. C. & E. NO. 1



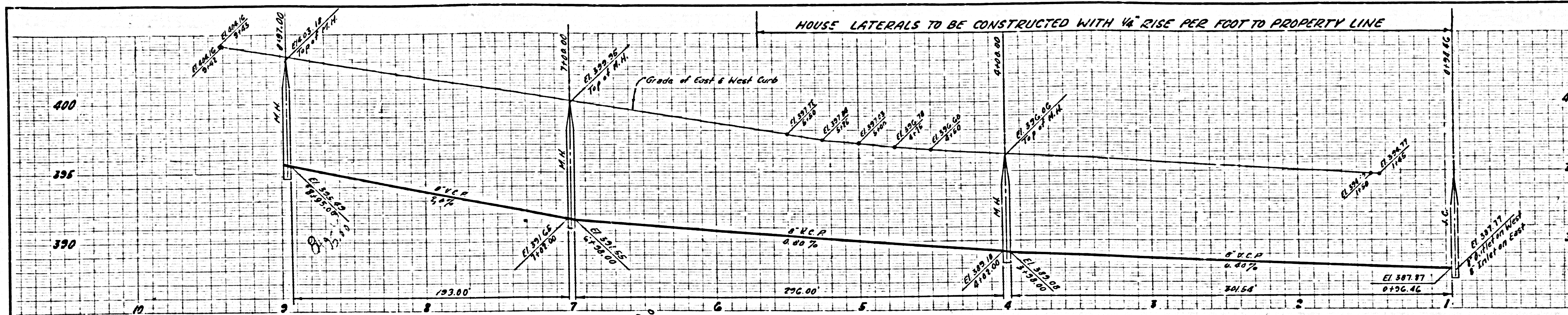
P.C. 4734 PAGE 2
 NO CHARGE FOR CONNECTIONS
 (26052)

TRACT NO 16093
 M.B. 527/5-2

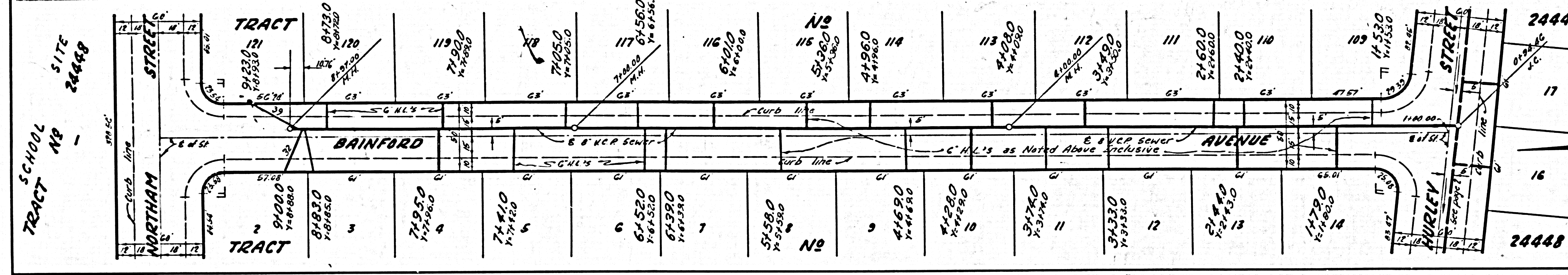
TRACT NO 16093
 M.B. 527/5-2

TRACT NO 24448
 P.C. 4734

TRACT NO 24448
 P.C. 4734



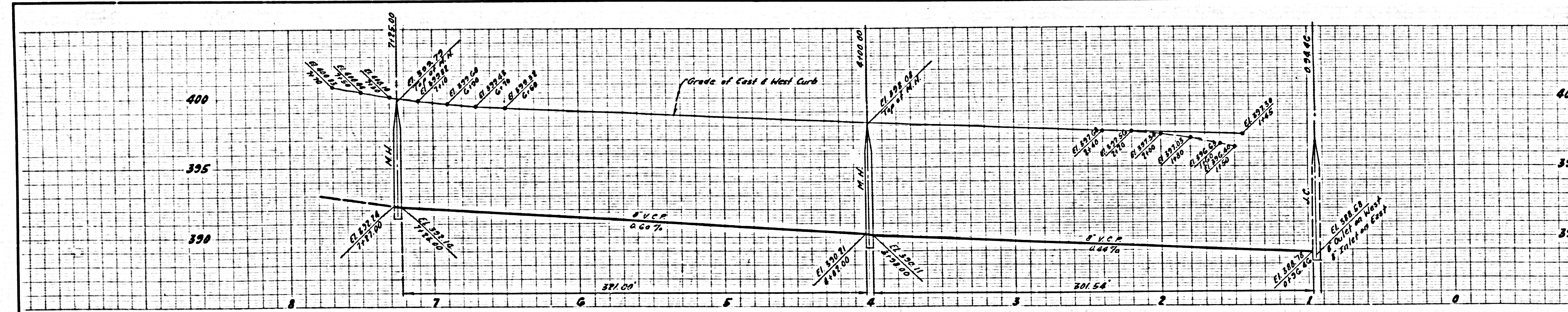
PC.4734 PAGE 3
 NO CHARGE FOR CONNECTIONS
 26,053



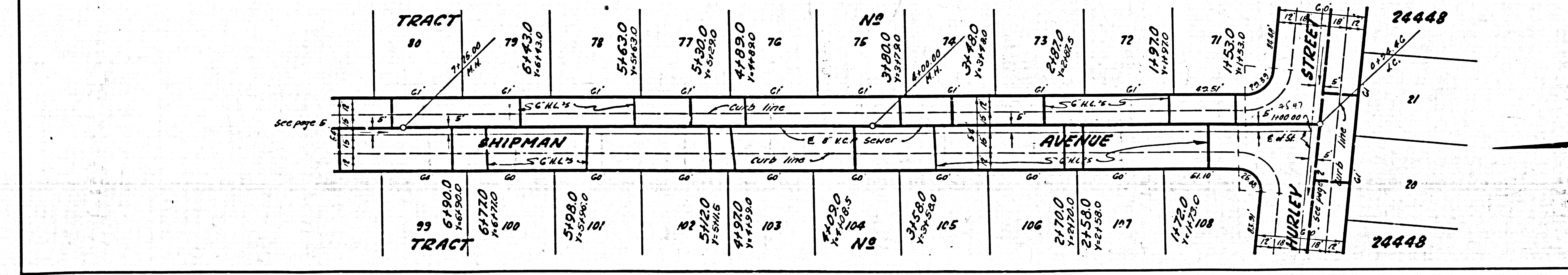
SCHOOL TRACT NO 1
 SITE 24448

24448
 17
 16
 24448

04. 8-19-60



PC.4734 PAGE 4
 NO CHARGE FOR CONNECTIONS
 26,054



See page 5

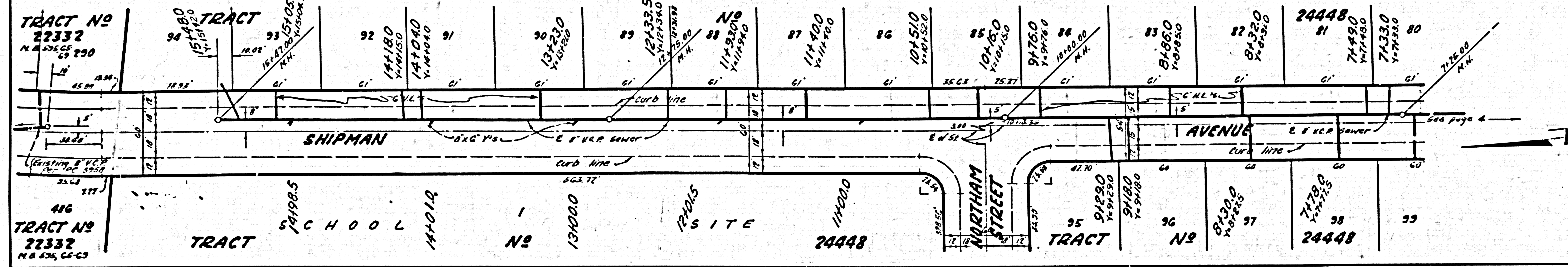
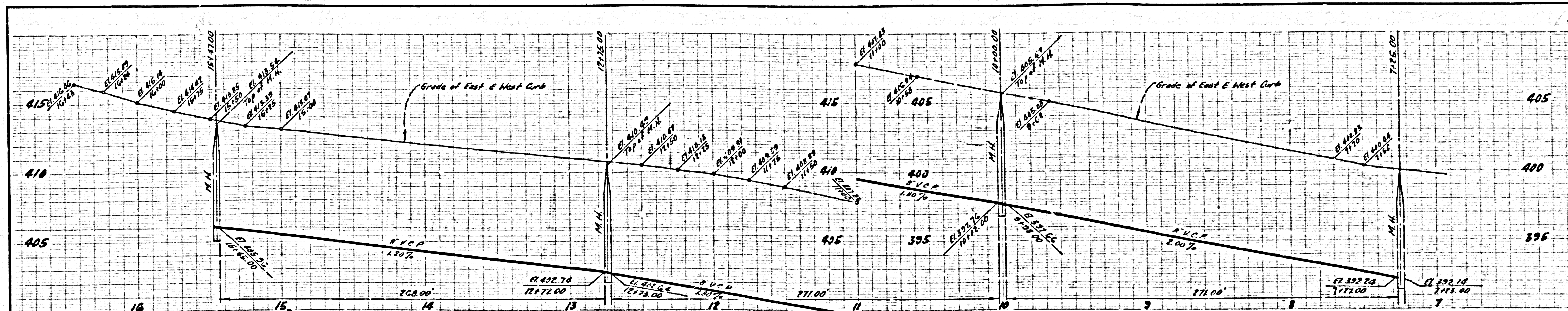
24448
 21
 20
 24448

04. 8-19-60

W.C. Buckner

NO CHARGE FOR CONNECTIONS

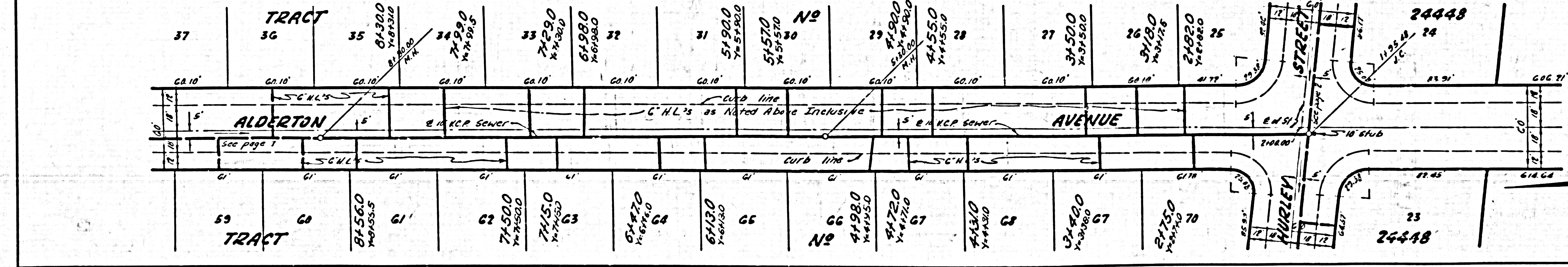
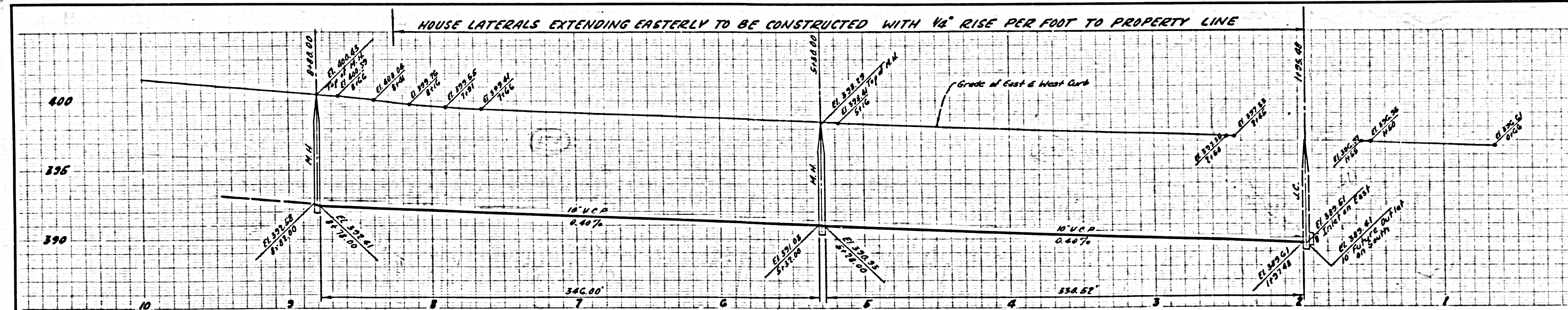
26,055



62 3-10-53

NO CHARGE FOR CONNECTIONS

26,056



62 3-10-53

