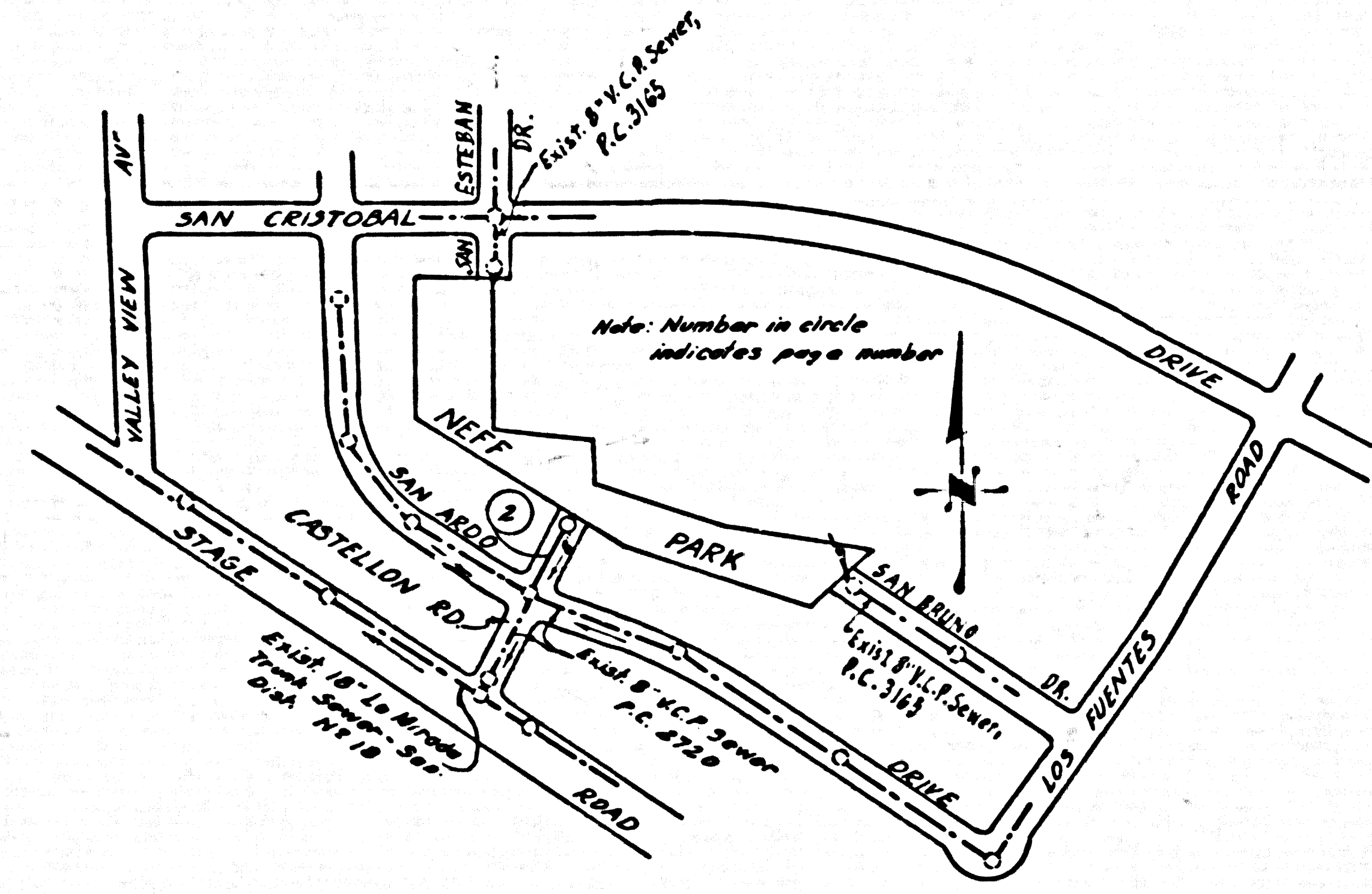


VALLEY VIEW AVE. AND ROSECRANS AVE. N.W. 1/4 S. OF THE CENTER LINE OF ROSECRANS AVE. AND N.W. 1/4 OF THE CENTER LINE OF VALLEY VIEW AVE. SET IN CONCRETE 18" BELOW THE SURFACE IN A WELL CUT THROUGH THE PAVEMENT AND PROTECTED BY A CAST IRON COVER MARKED "COUNTY SURVEYOR MONUMENT". A 3RD. COUNTY SURVEYOR MONUMENT MARKED "B.M. 1-6-1951, R.E. 329. COUNTY SURVEYOR'S P.B. 1202-11 1952 ADJ. ELEV. 110.315

NOTE: THIS BENCH MARK IS DEMONSTRATED AS BEING 3.22' (10'-10-1/2") BELOW THE CORNER POINT AND 0.44' (1'-1-1/2") BELOW THE ELEVATIONS TO CORNER TO S.A. CO. RD. DEPT. DATUM.



INDEX MAP
P.C. 4736
SCALE: 1:300

NORWALK BLDG. DIST. NO. 42

- NOTE:
PROVIDE STAKES ON THE PROPERTY LINE OR PROPERTY LINES PRODUCED AT RIGHT ANGLES TO THE SEWER LINE AT THE CENTER LINE OF EACH MANHOLE.
NO REPRESENTATIVE OF THE COUNTY ENGINEER WILL SURVEY OR LAYOUT ANY PORTION OF THE WORK.
THE OWNER OR HIS AUTHORIZED REPRESENTATIVE SHALL FURNISH THE COUNTY ENGINEER WITH GRADE SHEETS AND STATIONING FOR ALL HOUSE LATERALS AND Y BRANCHES AND SHALL PROVIDE STAKES FOR THEM AT THEIR PROPER LOCATIONS WITH STATIONING PLAINLY MARKED. ANY CHANGE IN LOCATION SHALL BE REQUESTED IN WRITING BY THE OWNER OR HIS REPRESENTATIVE.
NO REVISIONS SHALL BE MADE IN THESE PLANS WITHOUT THE APPROVAL OF THE COUNTY ENGINEER.
1. USE STANDARD MANHOLE FRAMES AND COVERS, S.A. 117, EXCEPT AS NOTED.
 2. USE STANDARD STRENGTH PIPE EXCEPT AS NOTED.
 3. USE CEMENT MORTAR "NEED-LOCK" OR "SPEED-SEAL" FOR ALL VITRIFIED CLAY PIPE JOINTS, RESPECTIVELY, SECTIONS 16 & 18.
 4. RESURFACE ALL TRENCH WITHIN PAVED AREA TO MEET L. A. COUNTY ROAD DEPT. OR CALIF. STATE HIGHWAY DEPT. REQUIREMENTS IN ACCORDANCE WITH PERMITS.
 5. ENCASE FOUR FEET OF SEWER AT POINTS OF INTERFERENCE WITH POLES, S.A. 119.
 6. HOUSE LATERALS TO BE CONSTRUCTED WITH INVERTS AT PROPERTY LINE $\frac{1}{2}$ FEET BELOW CURB GRADE EXCEPT AS NOTED.
 7. ALL STRUCTURES SHALL BE BRICK SEWER STRUCTURES, S.A. 184, EXCEPT AS NOTED.
 8. FOR ALLOWABLE LEAKAGE TEST USE FORMULA NO. 1 SPEC. SEC. 24
 9. MANHOLE TOPS IN UNIMPROVED RIGHTS-OF-WAY TO BE 6" ABOVE FINISHED GRADE.
 10. THE PRIVATE ENGINEER IS TO FURNISH THE HOUSE LATERAL DEPTH AT THE PROPERTY LINE BELOW THE TOP OF CURB ELEVATION FOR EACH HOUSE LATERAL, ON THE GRADE SHEET.
 11. THE CONTRACTOR SHALL SATISFY HIMSELF OF ALL SUBSTRUCTURES AND SHALL BE RESPONSIBLE FOR THEIR LOCATION.

NOTE:
THE CONTRACTOR SHALL NOTIFY THE CONSTRUCTION AND STORM DRAIN DIVISION BY TELEPHONE, MADISON 9-4747, EX. 352, AT LEAST 24 HOURS BEFORE STARTING ANY WORK UNDER THIS CONTRACT.

NO CHARGE FOR CONNECTIONS
E. Acosta 3-27-59

PROFILE ALIGNMENT AND GRADE OF P.C. 4736
SANITARY SEWERS PAGE 1
TO BE CONSTRUCTED IN
NEFF PARK (25,883)

PRIVATE CONTRACT NO. 4736

W.S. 34
1 SHEETS, 2 PAGES
SCALE: VERT. 1"=4' HORIZ. 1"=40'
MARCH, 1958
PREPARED IN THE OFFICES OF
MCINTIRE & QUIROS INC.
BY: Oliver Murray 3/18/58
REG. C. E. NO. 3624

FOR LEGEND SEE PLAN NO. S-A-64

NOTE:
GRADES TO WHICH THIS IMPROVEMENT IS TO BE CONSTRUCTED ARE SHOWN ON PLANS AND PROFILES. GRADE POINTS FOR TOP OF CURB, CENTER LINE OF STREETS, OR CENTER LINE OF ALLEYS ARE SHOWN BY CIRCLES ON PROFILES AT ALL POINTS BETWEEN DESIGNATED POINTS THE GRADE SHALL BE ESTABLISHED SO AS TO CONFORM TO A STRAIGHT LINE DRAWN BETWEEN SAID DESIGNATED POINTS.
ELEVATIONS ARE IN FEET ABOVE M.S.C. & S.S. SEA LEVEL. DEPTH OF 12" R. WORK SHALL BE CONSTRUCTED ACCORDING TO SPECIFICATIONS ON FILE IN THE OFFICE OF THE COUNTY ENGINEER AND SHALL BE PROSECUTED ONLY IN THE PRESENCE OF THE COUNTY ENGINEER.
BEFORE WORK CAN BE STARTED, THE CONTRACTOR MUST OBTAIN A PERMIT TO EXCAVATE IN COUNTY STREETS FROM THE L. A. COUNTY ROAD DEPT., 128 W. 2ND ST. AND MAKE A DEPOSIT WITH THE COUNTY ENGINEER, ROOM 324 PAN AMERICAN BUILDING, 323 SO. BROADWAY SUFFICIENT TO COVER THE COST OF CONSTRUCTION INSPECTION AND RECORD PLANS.
APPROVAL OF THIS PLAN BY THE COUNTY OF LOS ANGELES DOES NOT CONSTITUTE A REPRESENTATION AS TO THE ACCURACY OF THE LOCATION OF OR THE EXISTENCE OR NON-EXISTENCE OF ANY UNDERGROUND UTILITY PIPE, OR STRUCTURE WITHIN THE LIMITS OF THIS PROJECT. THIS NOTE APPLIES TO ALL PAGES.
IF WORK IS TO BE DONE IN A STATE HIGHWAY, A PERMIT MUST BE OBTAINED FROM THE STATE OF CALIFORNIA, DIVISION OF HIGHWAYS, 139 SOUTH SPRING STREET.

COUNTY OF LOS ANGELES, CALIFORNIA

APPROVED, JOHN A. LAMBE, COUNTY ENGINEER
BY: E. Acosta 3-27-59
SANITATION ENGINEER

APPROVED, A. M. RAWN, CHIEF ENGINEER
BY: A. M. Rawn
OFFICE ENGINEER

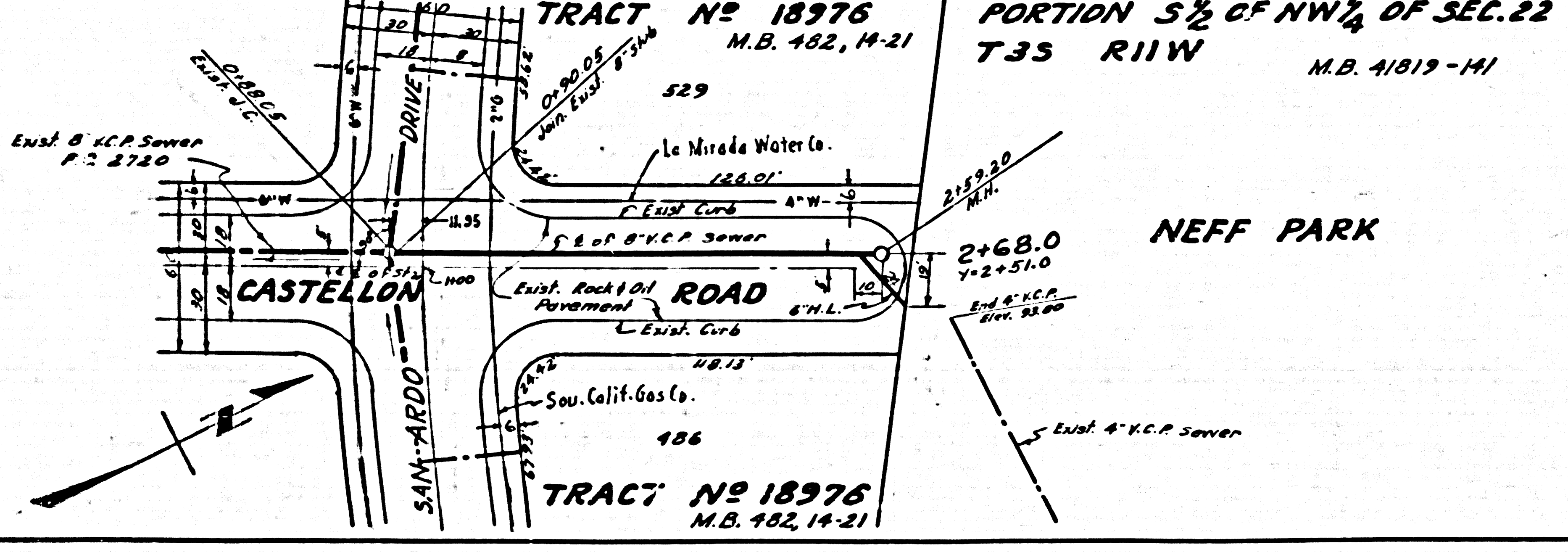
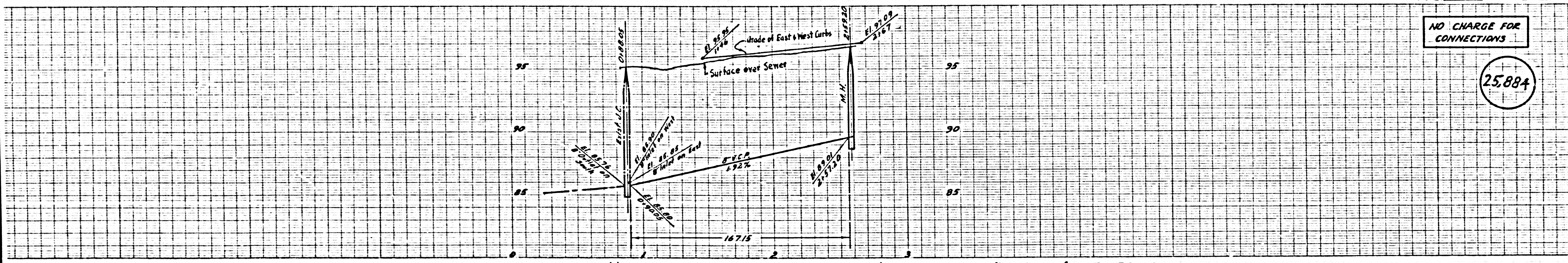
CHECKED BY: E. Acosta 3-27-59
OFFICE OF COUNTY ENGINEER, REG. C. E. NO. 3624

RECOMMENDED BY: John A. Estep 3-27-59
LEWIS & CLARK REGIONAL ENGINEER, REG. C. E. NO. 3871

P.C. 4736 PAGE 2

NO CHARGE FOR CONNECTIONS

(25,884)



U. S. G. & G. 1958 100' G.A.L. SCALE PLANT SHEET NO. 1