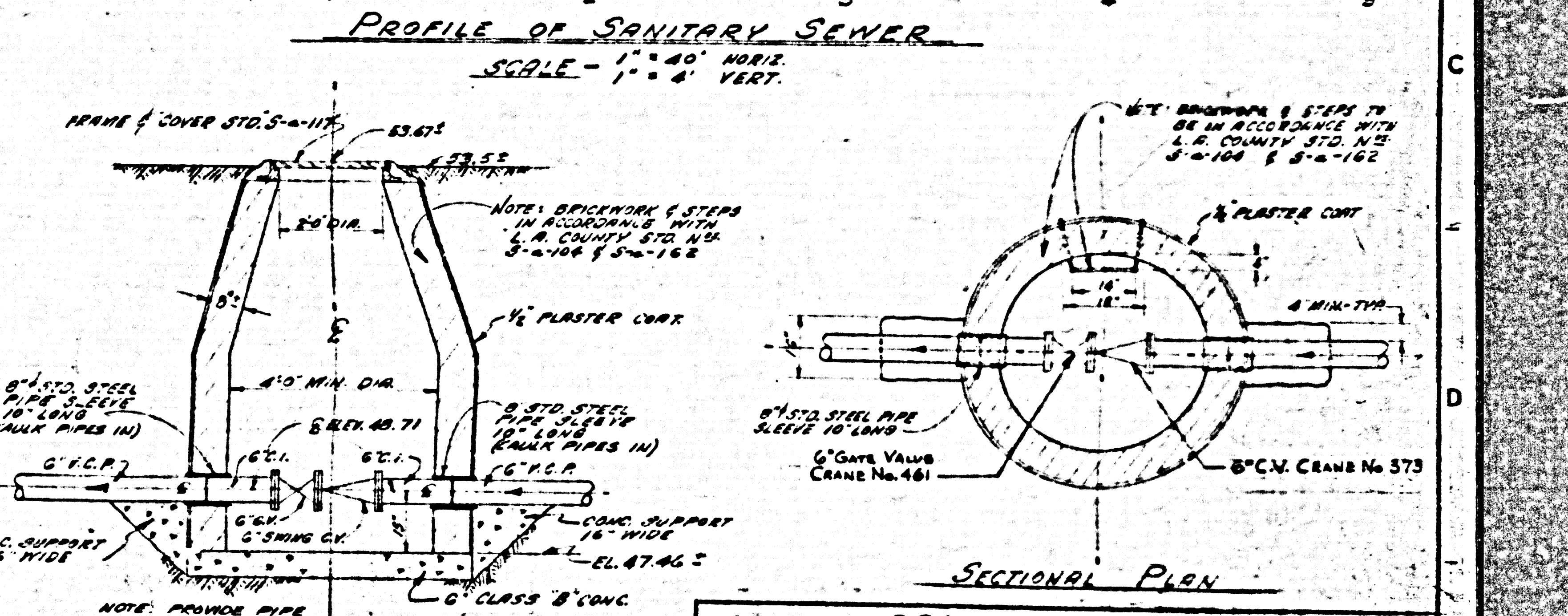
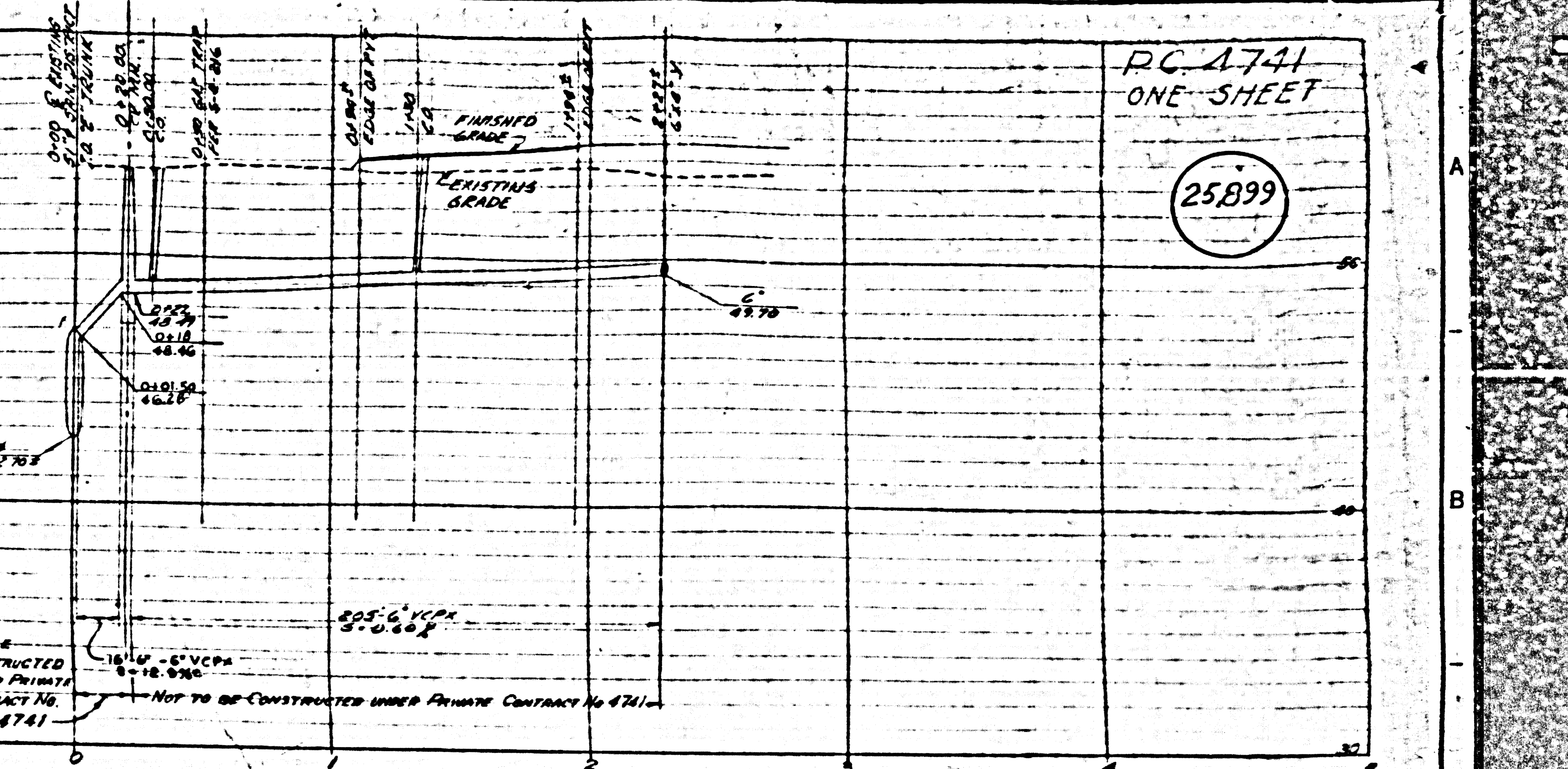
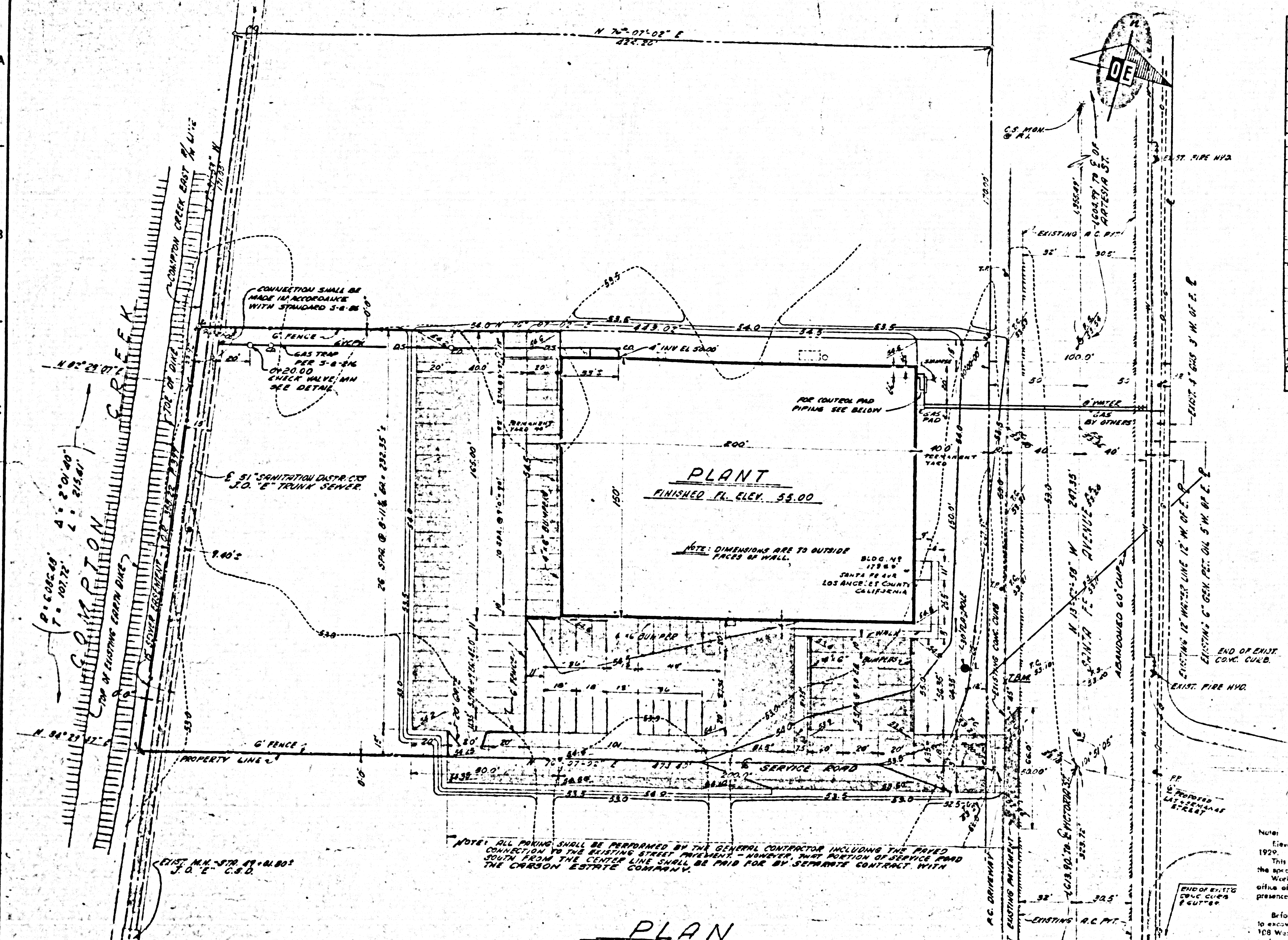
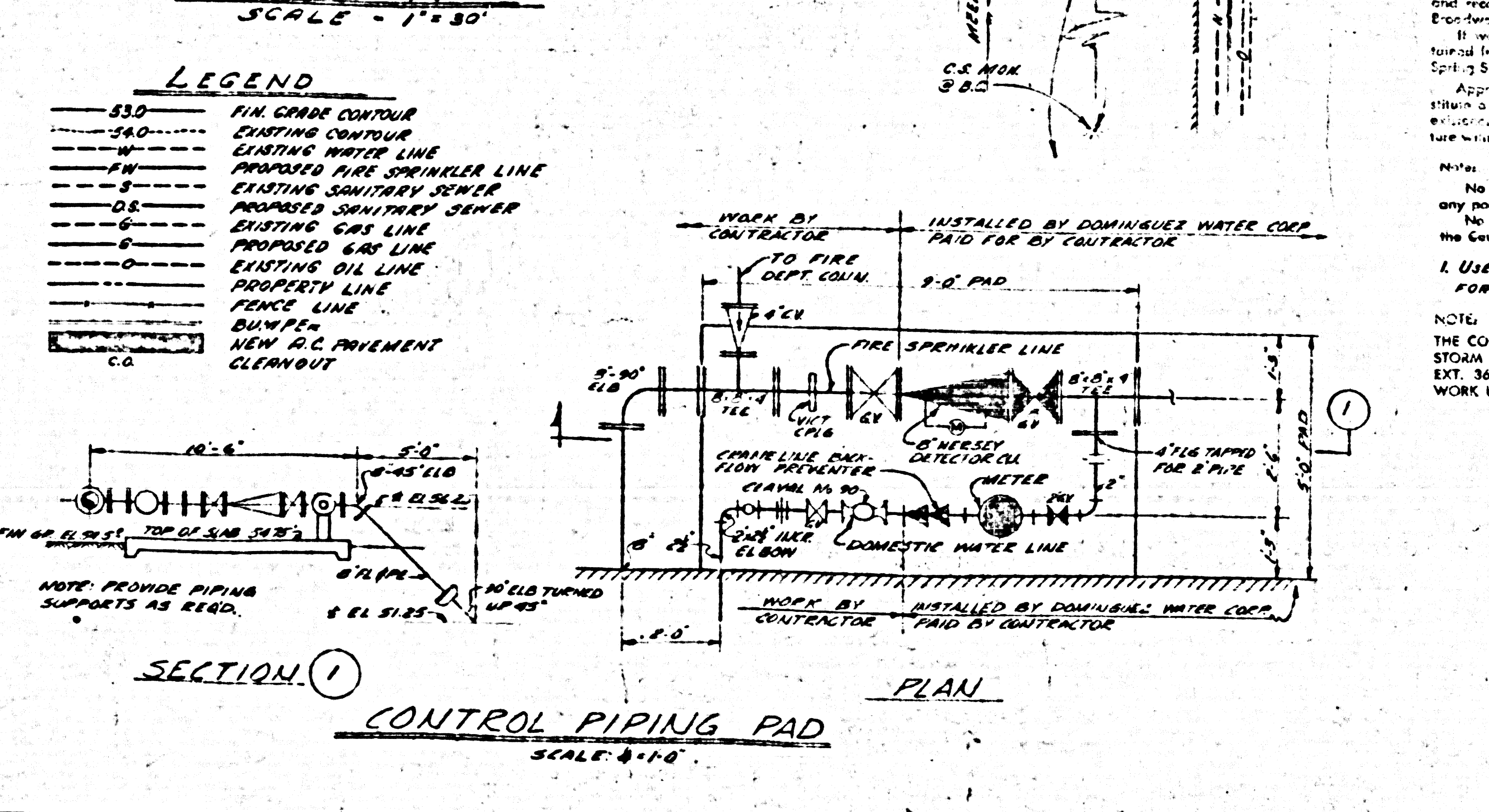


RC 4741
ONE SHEET
25899



- CIVIL NOTES**
- GRADE UNIFORMLY BETWEEN CONTROL ELEVATIONS OR CONTOURS.
 - PROVIDE 2 FOOT WIDTH BERM AROUND OUTSIDE EDGE OF PAVEMENT AND SLOPE 1 IN 4 TO EXISTING GROUND.
 - ALL ASPHALTIC CONCRETE SHALL BE 3 INCHES THICK ON 8 INCHES OF COMPACTED SOIL.
 - PAVEMENT IN SANTA FE AVENUE SHALL BE IN ACCORDANCE WITH L.A. COUNTY ROAD DEPT. REQUIREMENTS.
 - DRIVEWAY SHALL BE A L.A. COUNTY ROAD, DEPT. 6 P.C. COMMERCIAL DRIVEWAY. W=50'
 - 1/4" ADJ. ON WEST CURB OF SANTA FE AVENUE 50 FEET NORTH OF S.E. PROPERTY CORNER. ELEV. 55.12, BASE B.M. BY 355 (1/4" ADJUSTMENT, ELEV. 48.766.)
 - PROVIDE MIN. COVER OF 30 INCHES OVER WATER LINES.
 - BEFORE BRANCHING INTO L.A. COUNTY SANITATION DISTRICT TRUNK SEWER, NOTIFY SANITATION DISTRICT. WORK SHALL BE DONE ONLY IN THE PRESENCE OF THEIR REPRESENTATIVE.
 - PAVING SHALL BE BORDERED WITH A CONTINUOUS 1 1/2" REDWOOD HEADER AND 2" S" REDWOOD STAKES @ 4" OC. WHERE IT ABUTS EARTH.



DRAWING LIST

C-1	GRADING, PAVING AND UTILITY PLAN AND DETAILS.
A-1	FLOOR PLAN
A-2	ELEVATIONS, SECTION, DETAILS AND ROOF PLAN.
A-3	WALL SECTIONS, DOOR AND WINDOW SCHEDULES.
F-1	FOUNDATION PLAN AND DETAILS.
S-1	GENERAL NOTES & WALL DETAILS.
S-2	PRECAST PANEL ELEVATIONS.
S-3	ROOF FRAMING PLAN & DETAILS.
S-4	ROOF DESIGN BY INDEPENDENT STEEL CONSTRUCTION.
M-1	HEATING, AIR CONDITIONING & VENTILATION LAYOUT.
M-2	PLUMBING LAYOUT.
E-1	ELECTRICAL FLOOR PLAN.
E-2	ELECTRICAL LIGHTING PLAN.
E-3	ELECTRICAL AIR CONDITIONING PLAN.
E-4	ELECTRICAL SCHEDULES.
L-1	LANDSCAPE PLAN.

GENERAL NOTES

- BUILDING TO BE ONE (1) STORY OFFICE PLANT OF 10,000 SF.
- BUILDING TO BE DESIGNED FOR THE MANUFACTURE OF DUST TABLETS.
- GROUP FOR OCCUPANCY, TYPE 2 WITH 3-40 PERMANENT USE VACUUM.
- OCCUPANCY LOAD, MAX. NUMBER EMPLOYEES 50.
- MIN. PARKING SPACES - 60.
- N.B.A.U. APPROVED PLANS TO BE SUBMITTED TO DISTRICT OFFICE BEFORE INSTALLATION OF SPRINKLER SYSTEM, BUT BE BLDG. TO BE DRINKLESS.

PRIVATE CONTRACT No. 4741
LENNOX BLDG. DIST. No. 7
W.S. 32 - Rerie Guide - 23,61
SHEETS: 1

CITY OF LOS ANGELES, CALIFORNIA
APPROVED, JOHN A. LAJUTE, County Engineer
By: *[Signature]*
APPROVED, A. H. LAJUTE, City Engineer
By: *[Signature]*
Checked: *[Signature]* 1-11-58
Office of County Engineer, 100 S. E. No. 3468

CARSON ESTATE COMPANY
COORDINATED CONSTRUCTION, INC.
ELLER PROGRESS MANUFACTURING COMPANY
GRADING, PAVING & UTILITY PLAN
AND DETAILS
QUINTON ENGINEERS, LTD.
LOS ANGELES 17, CALIFORNIA

DESIGNED BY: *[Signature]*
DRAWN BY: *[Signature]*
CHECKED BY: *[Signature]*
APPROVED BY: *[Signature]*

SCALE: AS NOTED
DATE: MAR 21 1958
JOB NO. 5779
DRAWING NO. C-1